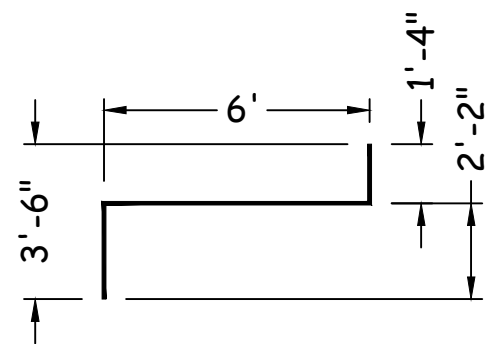
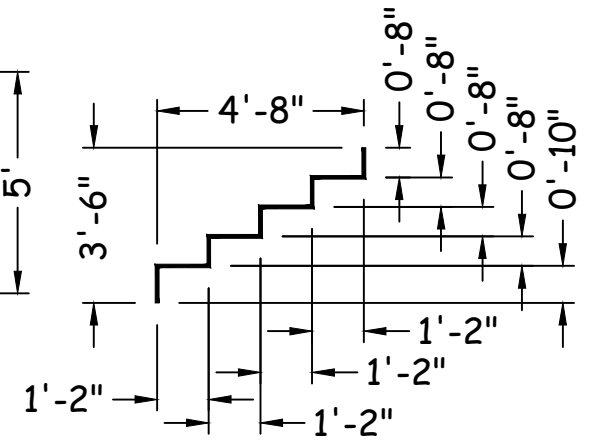
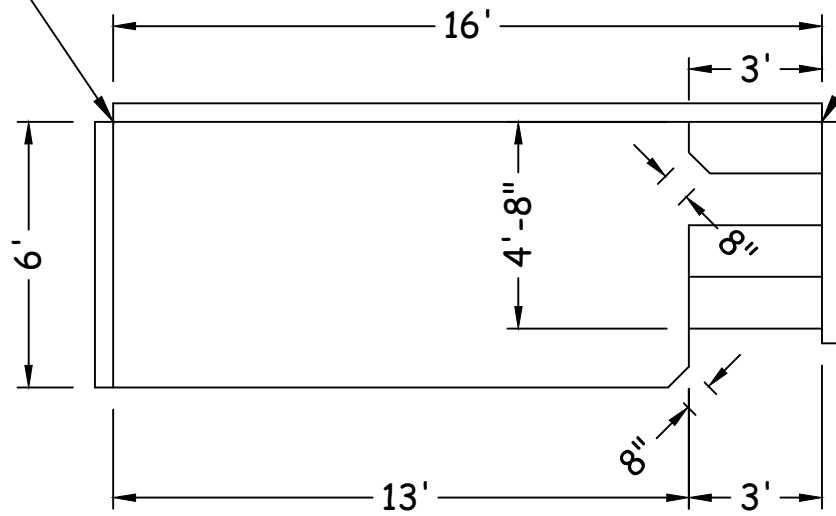


SOK-999-XL CUSTOM STEEL OPEN TOP STEP

90° CRN WITH
6" INSERT

90° CRN WITH
6" INSERT



TOTAL SURFACE AREA = 91.9 SQ FT
EXTENDED SURFACE AREA = 88.5 SQ FT
STEEL PERIMETER WALL = 27'

latham
The Pool Company

CUSTOMER: SCP/Olive Branch		
REF: ROYAL/NILYEU	PO#:	
LNR SQFT:	CVR SQFT:	PERIM:

Preliminary Drawing Only
Approval required for completion of design.

X _____