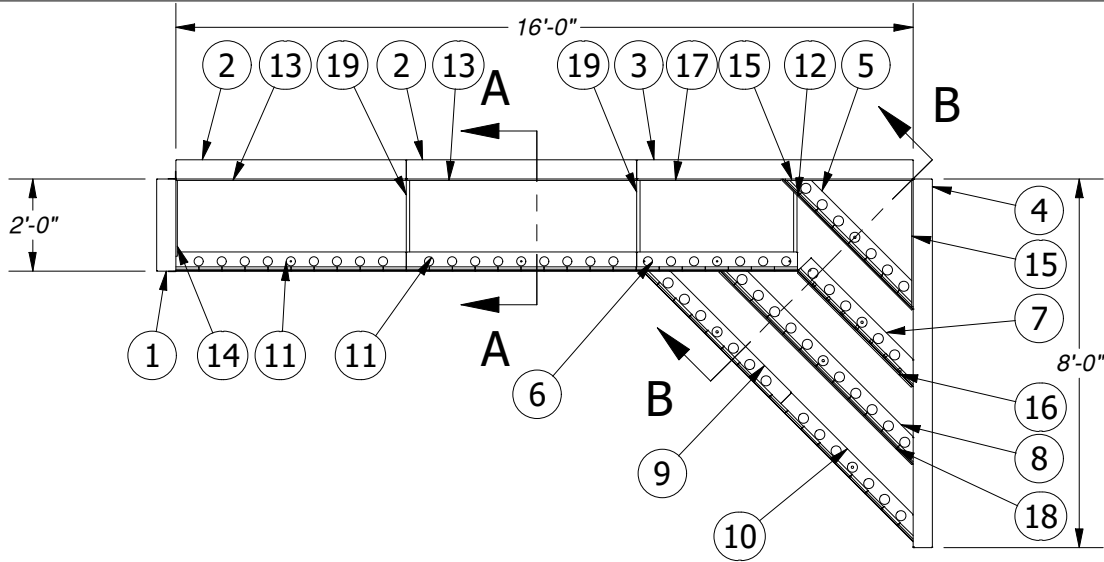




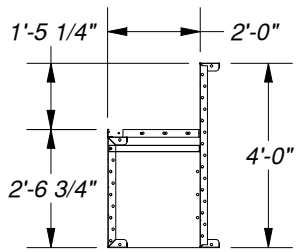
Name: 16' POURED CORNER STEP/BENCH W/LINER TRACK-SCREED EDGE-NEW STYLE-4 TREAD-48" HIGH

Number: AS83RCPBH6XXX0Z

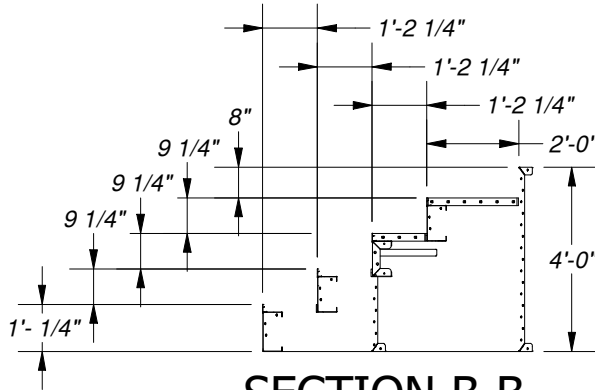
250 Route 61 South, Schuylkill Haven, PA 17972 • 570-385-4733 • fax: 570-385-1318 • CustomerService@CardinalSystemsinc.com



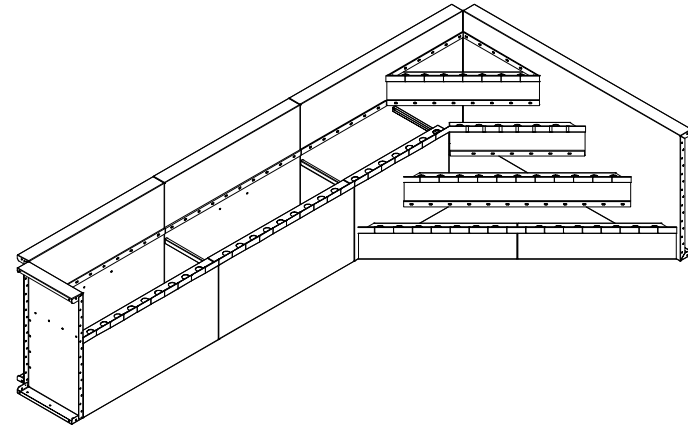
PARTS LIST			
ITEM	PART NUMBER	QTY	DESCRIPTION
1	DP01800	1	2'-0" DECK PANEL (48")
2	BP02645	2	5'-0" BENCH PANEL W/ 1Z
3	SP08102	1	6'-0" STEP PANEL W/1 Z-BRACE (48")
4	SP08106	1	8'-0" STEP PANEL W/2 Z-BRACES (48")
5	PT08944	1	4'-0" POURED TREAD (9 1/4")
6	PT10509	1	3'-5 7/8" POURED TREAD (2'-4 3/4")
7	PT10513	1	3'-6 1/2" POURED TREAD (9 1/4")
8	PT10514	1	5'-11" POURED TREAD (9 1/4")
9	PT10515	1	4'-1 3/4" POURED TREAD (10 1/4")
10	PT10516	1	4'-1 3/4" POURED TREAD (10 1/4")
11	PT10542	2	5'-0" POURED TREAD (28.75)
12	LT0005	1	4'-0" LINER TRACK
13	LT0020	2	5'-0" LINER TRACK
14	LT0063	1	1'-8" LINER TRACK
15	LT0334	2	2'-9" LINER TRACK
16	LT0832	1	3'-6" LINER TRACK
17	LT1667	1	3'-1 1/2" LINER TRACK
18	LT02727	1	5'-11" LINER TRACK
19	TS0060	3	2'-0" POURED TREAD SUPPORT
20	CS600OPT	4	A-FRAME ASSEMBLY
21	CS608DH	4	18" DRIVE STAKE
22	CS948SA	2	SQUARE CORNER ANGLE 48" HIGH
23	CS928GC	1	GRECIAN CORNER ANGLE-28" HIGH
24	CS903FC	2	FOAM CORNER INSERT
25	SP0745-6N-3	3	BOX OF 3'-6'-0" NOTCHED SCREED EDGE
26	BP000TS	2	BOX OF #12X1 TEK SCREWS
27	BP106ST	2	LARGE STEP BOLT PACK
28	BP820GB	2	BENT BOLTS



SECTION A-A
SCALE 1/50



SECTION B-B
SCALE 1/50



NOTE:
USE REBAR HOLE LOCATIONS TO
PIN WALL AND STEP DECK
SUPPORTS IN PLACE. THEN POUR
4"-6" OF CONCRETE AROUND
THESE AREAS AND UNDER THE
ASSEMBLY FOR REINFORCEMENT

Drawn By: nrentschler
Scale: 1/50

Date: 7/6/2020
Notes: ST015647

This information is the confidential property of Cardinal Systems, Inc. Disclosure or duplication without proper written approval is strictly prohibited. Acceptance and use of this drawing constitutes knowledge and acceptance by the user of the terms and conditions set forth in the notice and warning which accompanied this drawing is incorporated herein and made part hereof and is found on Cardinal Systems, Inc's website at www.CardinalSystemsInc.com



CardinalSystemsInc.com