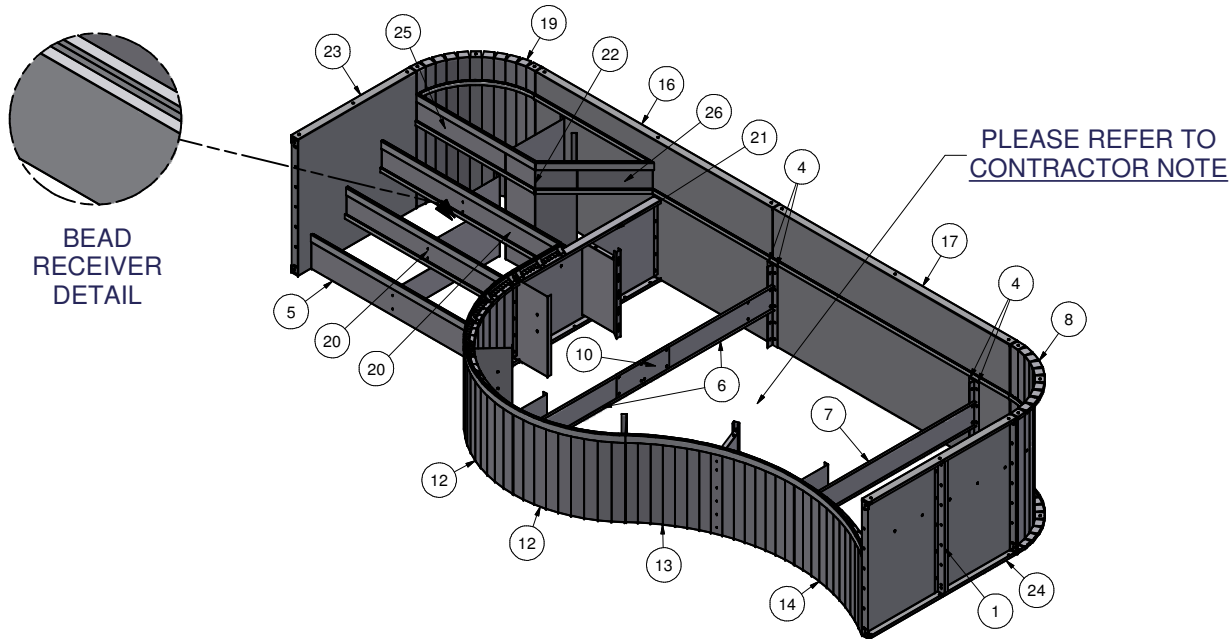


Parts List

ITEM	QTY	PART NUMBER	DESCRIPTION
1	5	48-Z-RIB	48" Z-RIB
2	55	COP-KCVRET-W-1	COP COPING STIFFNER 1 5/8"-1PC
3	2	ESC-8029-TMRS	BRACE, TOP MIDDLE RISER SUPPORT
4	4	ESC-9625-BB	BRACE, 90° L BRACKET
5	1	ESC-9625-BR	STRAIGHT, BOTTOM RISER
6	2	ESC-9625-CB	BRACE, CENTER SUPPORT
7	1	ESC-9625-CB2	BRACE, CENTER SUPPORT
8	1	ESC-9625-CWR	REV. RAD. CORNER WALL, RIGHT
9	2	ESC-9625-DS	BRACE, DRIVE STAKE CHANNEL SET
10	2	ESC-9625-PT	BRACE, FLAT PLATE
11	1	ESC-9625-SRL	REV RAD, SUNLEDGE RISER, LEFT
12	2	ESC-9625-SRM	REV RAD, SUNLEDGE RISER, MIDDLE
13	1	ESC-9625-SRR	RADIUS, SUNLEDGE RISER, RIGHT
14	1	ESC-9625-SRRE	RADIUS, SUNLEDGE RISER, RIGHT, END
15	5	ESC-9625-SRS	BRACE, SUNLEDGE RISER SUPPORT
16	1	ESC-17295-BWL	STRAIGHT, BACK WALL, LEFT
17	1	ESC-17295-BWR	STRAIGHT, BACK WALL, RIGHT
18	1	ESC-17295-CSB	BRACE, 3-RISER SUPPORT
19	1	ESC-17295-CWL	RADIUS, CORNER WALL, LEFT
20	2	ESC-17295-MR	STRAIGHT, MIDDLE RISER
21	1	ESC-17295-SRE	STRAIGHT, SUNLEDGE RISER, END
22	1	ESC-17295-SRTR	STR REV, TOP RISER
23	1	ESC-17295-SWL	STRAIGHT, SIDE WALL, LEFT
24	1	ESC-17295-SWR	STRAIGHT, SIDE WALL, RIGHT
25	1	ESC-17295-TRL	STRAIGHT, TOP RISER, LEFT
26	1	ESC-17295-TRR	STRAIGHT, TOP RISER, RIGHT
27	1	ESC-17295-TRS	BRACE, TOP RISER SUPPORT
28	1	ESC-17295-TRSR	BRACE, TOP RISER SUPPORT, RIGHT
29	18'	OPC-CONREC-XX	NOTCHED CONCRETE RECEPTOR
30	28'	OPC-CONREC-XXU	UN-NOTCHED CONCRETE RECEPTOR
31	48'	SSC-1099-PFT	STEEL STEP PVC BEAD RETAINER (PER FT)



**CONTRACTOR NOTE:**

CONTRACTOR IS RESPONSIBLE FOR SECURING ALL RISERS INTO PLACE WITH REBAR HOLES BEFORE BACKFILLING THIS CUSTOM STEP

KEEP BEAD RECEIVER ATTACHED TO THE RISERS AND WALL PANELS FOR SHIPPING. A TOTAL OF 576" (48') OF BEAD RECEIVER IS REQUIRED.

**CONTRACTOR MUST FIELD FIT ALL CONCRETE RECEPTOR.**

TOTALS REQUIRED FOR THIS CUSTOM PRODUCT APPLICATION.

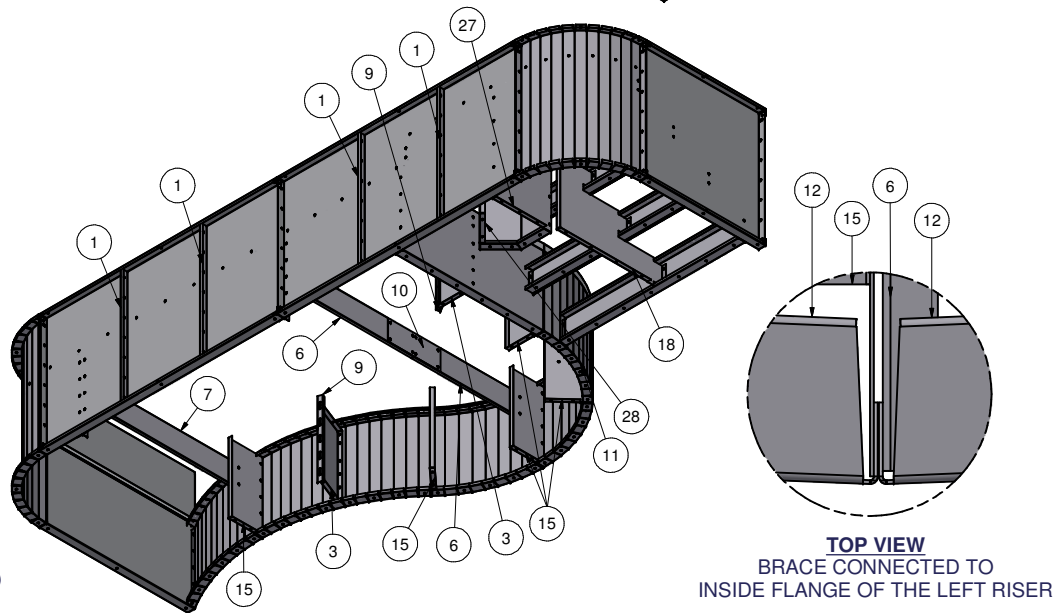
OPC-CONREC-XX (NOTCHED) = 216" (18')

OPC-CONREC-XXU (UN-NOTCHED) = 336" (28')

COP-KCVRET-W-1 (STIFFENER) = 55

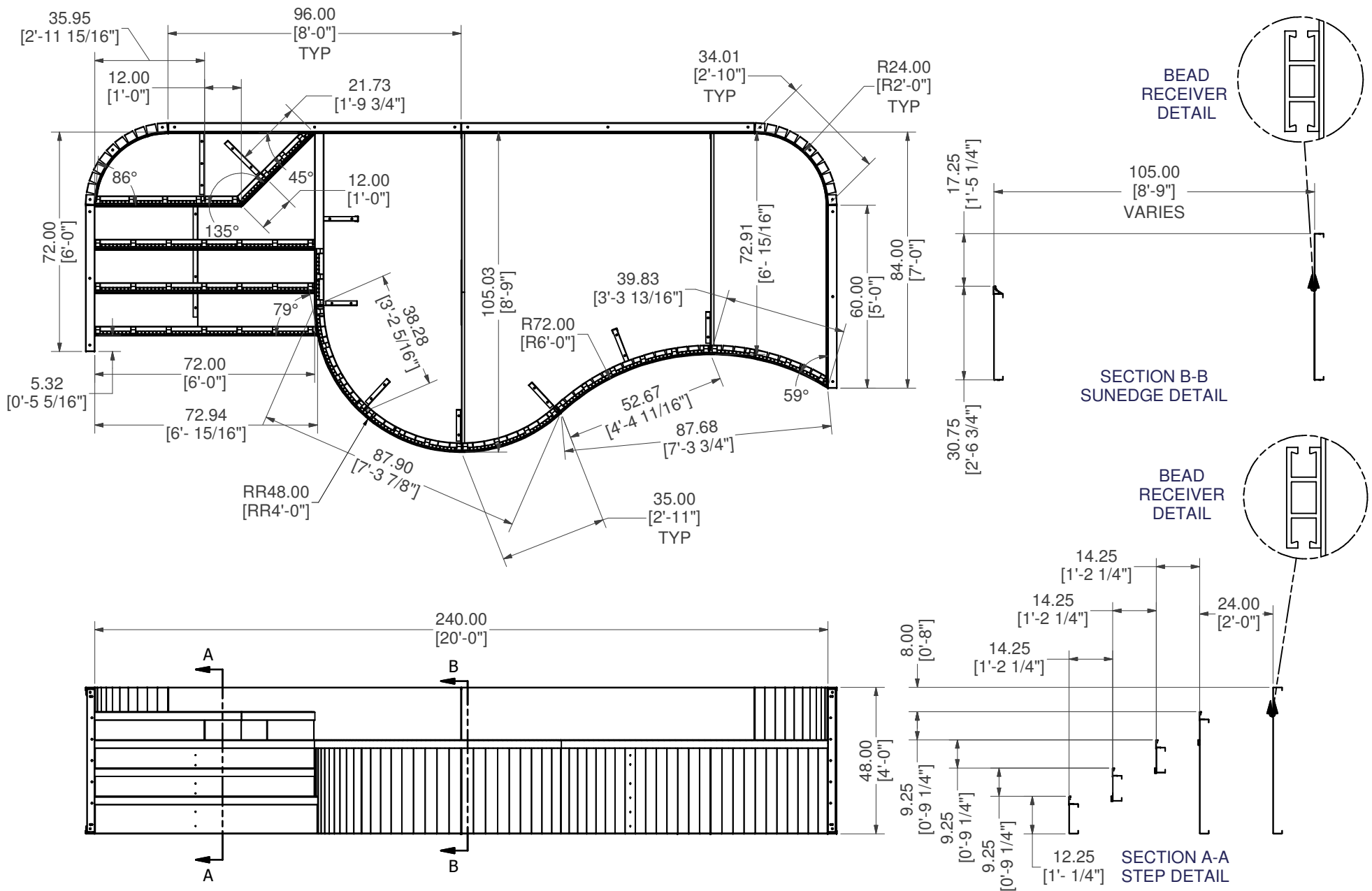
**CONTRACTOR NOTE:**

BACK FILL STEP/ SUNLEDGE AREA WITH COMPACTED EARTH MATERIAL. FINISH STEP/ SUNLEDGE AREA WITH 2" OF HARDEN FLOOR MATERIAL TO MATCH REQUIRED DEPTH (FLUSH WITH TOP OF BEAD RECEIVER).




# 20' X 7' X 2'R CRN OPEN TOP STEP W/ WAVE SUNLEDGE RIGHT

<b>PART #:</b> ESC-17295	<b>WEIGHT:</b> 976.05 lbmass	<b>MACHINE TIME:</b> N/A	<b>FILE/DIRECTORY:</b> C:\Vault\FTW\Design\CUSTOM STEPS\ESC-17000-17999\ESC-17295.idw
	TOLERANCES EXCEPT AS NOTED	<b>MATERIAL:</b>	<b>DATE:</b> 7/26/2023
	0/0 0.0 0.00 0.000 0'	<b>DRAWN BY:</b> VD	<b>NOTES:</b>
	±1/8 ±0.25 ±0.0625 ±0.03125 ±1/2'		<b>SHEET:</b> 1 OF 30

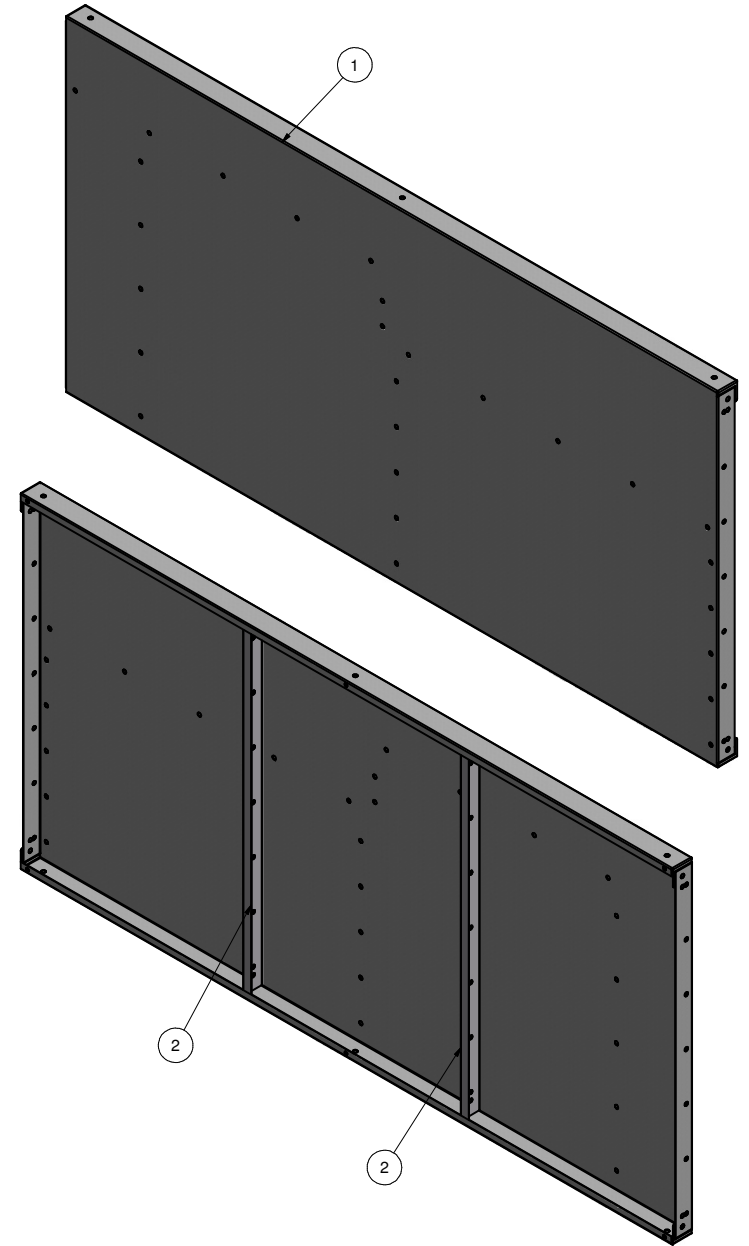
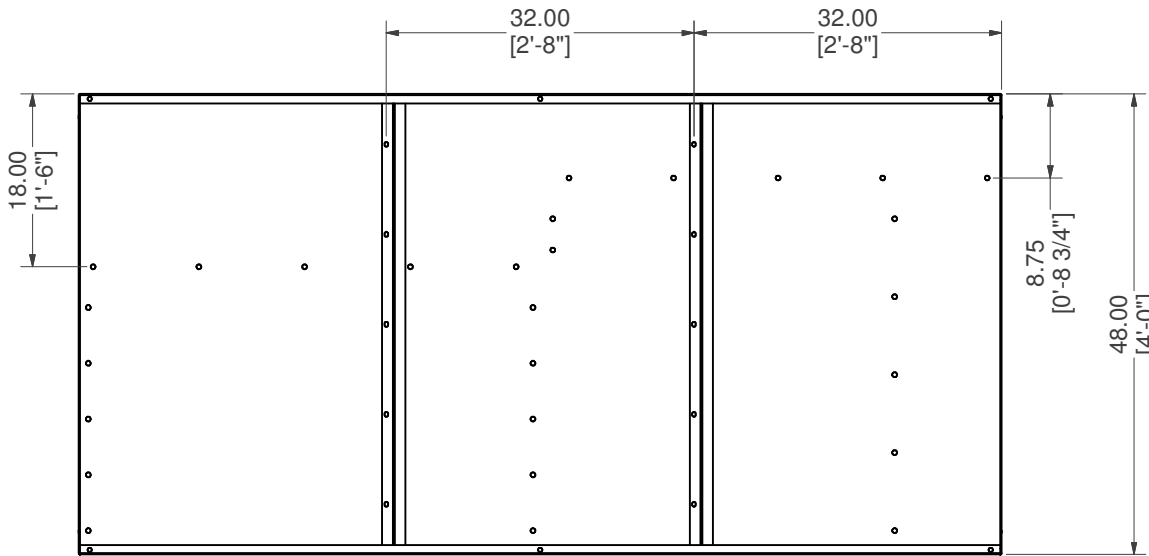
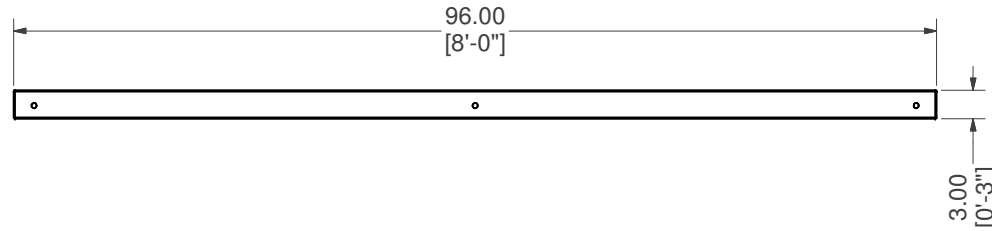


# 20' X 7' X 2'R CRN OPEN TOP STEP W/ WAVE SUNLEDGE RIGHT

<b>PART #:</b> ESC-17295	<b>WEIGHT:</b> 976.05 lbmass	<b>MACHINE TIME:</b> N/A	<b>FILE/DIRECTORY:</b> C:\Vault\FTW\Design\CUSTOM STEPS\ESC-17000-17999\ESC-17295.idw
	TOLERANCES EXCEPT AS NOTED	<b>MATERIAL:</b>	<b>DATE:</b> 7/26/2023
	0/0 0.0 0.00 0.000 0'	<b>DRAWN BY:</b> VD	<b>NOTES:</b>
	±1/8 ±0.25 ±0.0625 ±0.03125 ±1/2'		<b>SHEET:</b> 2 OF 30

Parts List			
ITEM	QTY	PART NUMBER	DESCRIPTION
2	2	48-Z-RIB	48" Z-RIB
1	1	ESC-17295-BWL	STRAIGHT, BACK WALL, LEFT

# WELDCODE #71



## STRAIGHT, BACK WALL, LEFT W/ Z-RIBS

**PART #:** ESC-17295-BWL

**WEIGHT:**  
122.56 lbmass

**MACHINE TIME:**  
N/A

**FILE/DIRECTORY:**

C:\Vault\FTW\Design\CUSTOM STEPS\ESC-17000-17999\ESC-17295.idw

*latham*  
The Pool Company

TOLERANCES EXCEPT AS NOTED  
0/0 0.0 0.00 0.000 0'  
±1/8 ±0.25 ±0.0625 ±0.03125 ±1/2"

**MATERIAL:**

**DATE :** 7/26/2023

**NOTES:**

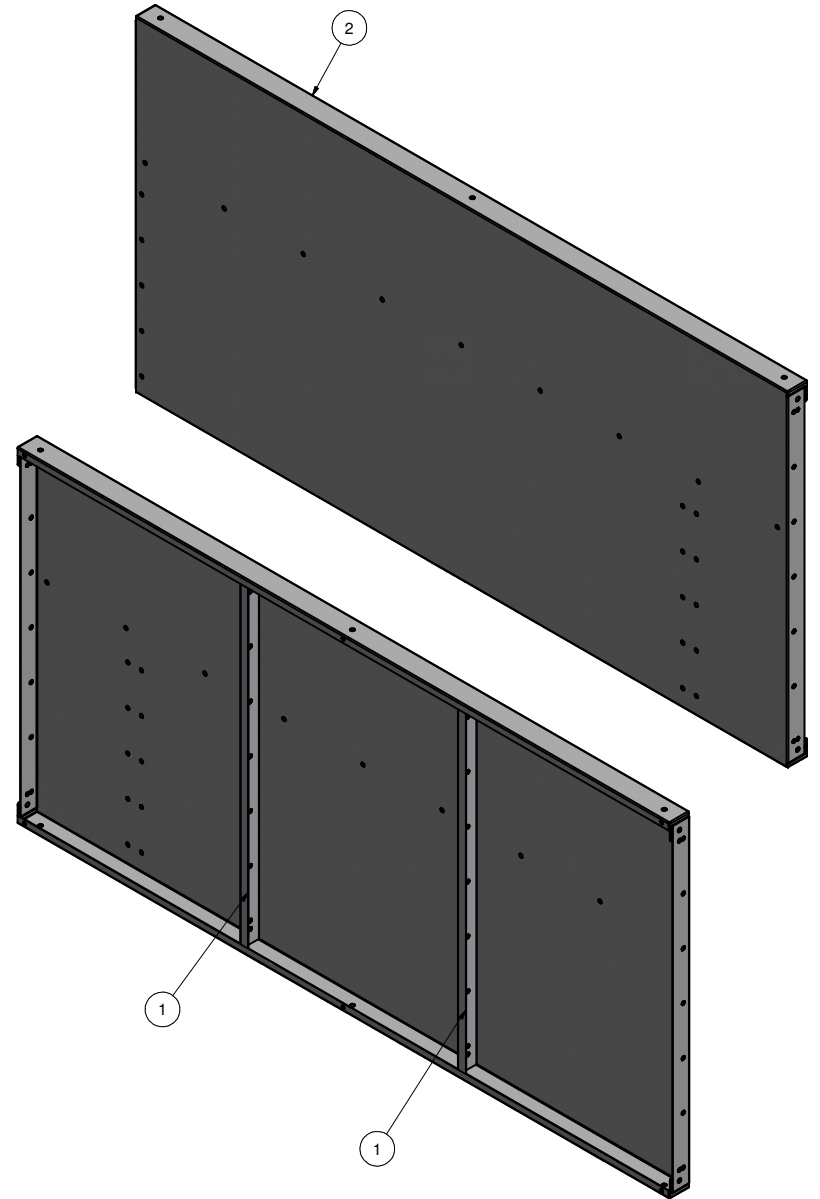
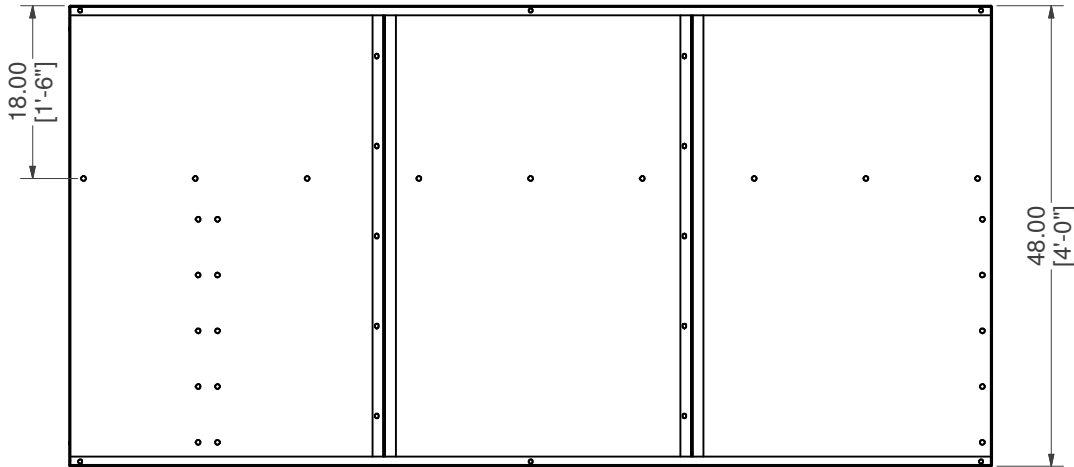
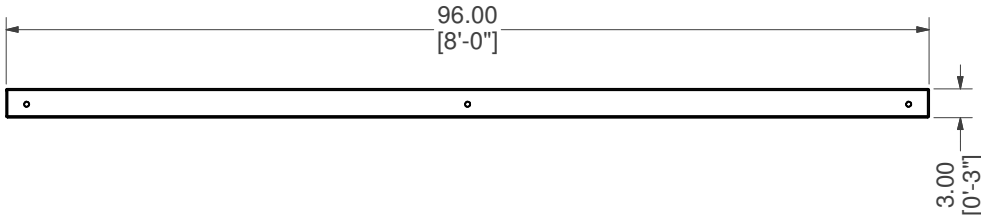
**DRAWN BY:** VD

**SHEET :** 3 OF 30

WELDCODE #71  
LOCATE 32" & 64" FROM  
LEADING EDGE

Parts List			
ITEM	QTY	PART NUMBER	DESCRIPTION
1	2	48-Z-RIB	48" Z-RIB
2	1	ESC-17295-BWR	STRAIGHT, BACK WALL, RIGHT

# WELDCODE #71

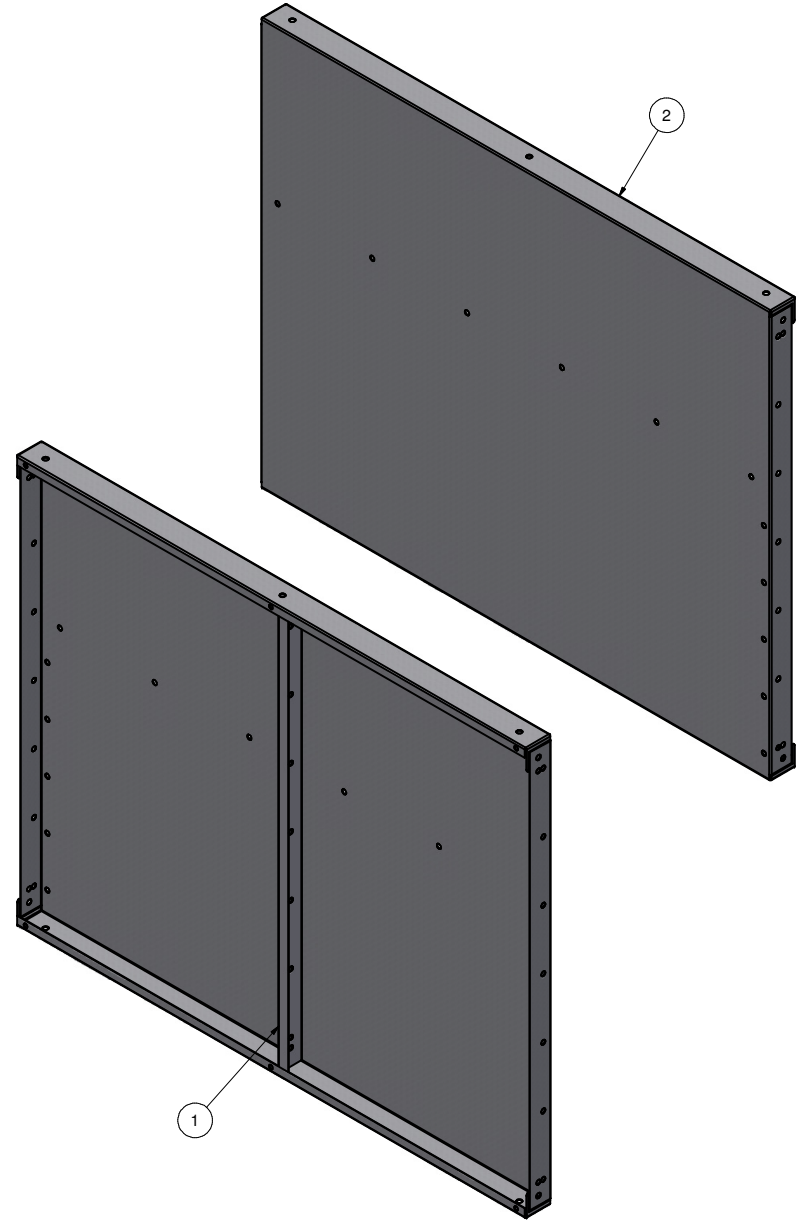
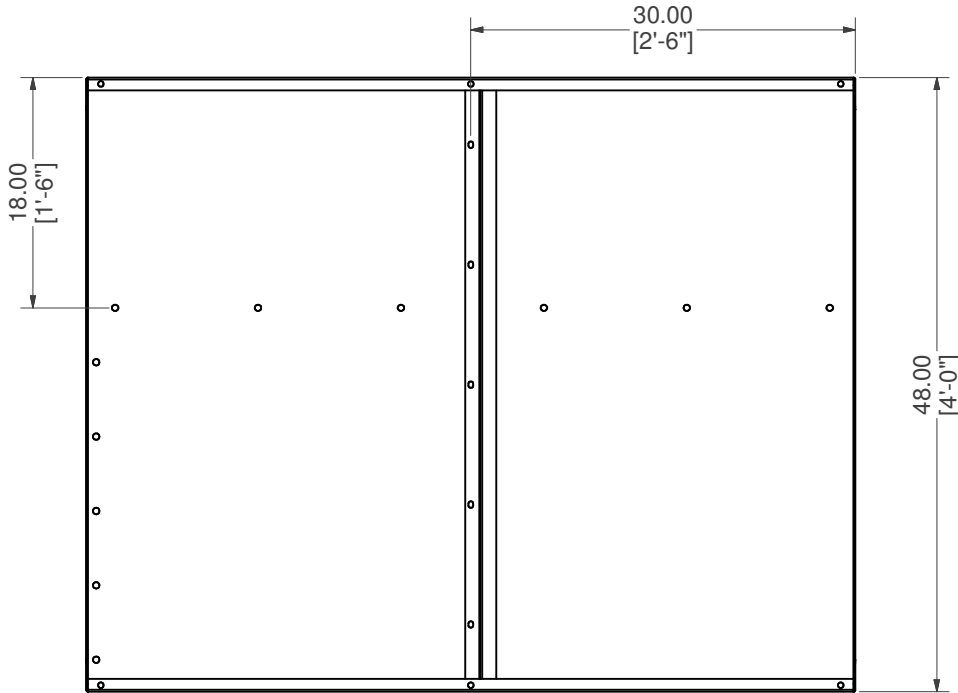
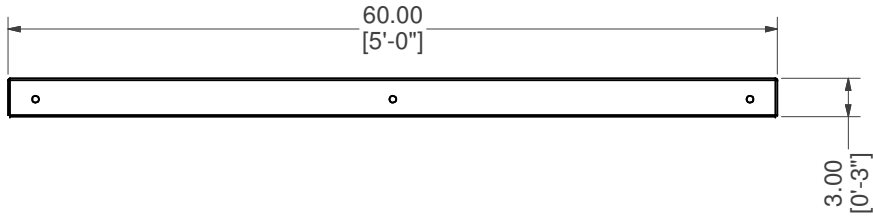


## STRAIGHT, BACK WALL, RIGHT W/ Z-RIBS


	<b>PART #:</b> ESC-17295-BWR	<b>WEIGHT:</b> 122.57 lbmass	<b>MACHINE TIME:</b> N/A	<b>FILE/DIRECTORY:</b> C:\Vault\FTW\Design\CUSTOM STEPS\ESC-17000-17999\ESC-17295.idw
	<b>TOLERANCES EXCEPT AS NOTED</b> 0/0 0.0 0.00 0.000 0' ±1/8 ±0.25 ±0.0625 ±0.03125 ±1/2"	<b>MATERIAL:</b>	<b>DATE:</b> 7/26/2023	<b>NOTES:</b> WELDCODE #71 LOCATE 32" & 64" FROM LEADING EDGE
<b>DRAWN BY:</b> VD		<b>SHEET:</b> 4 OF 30		

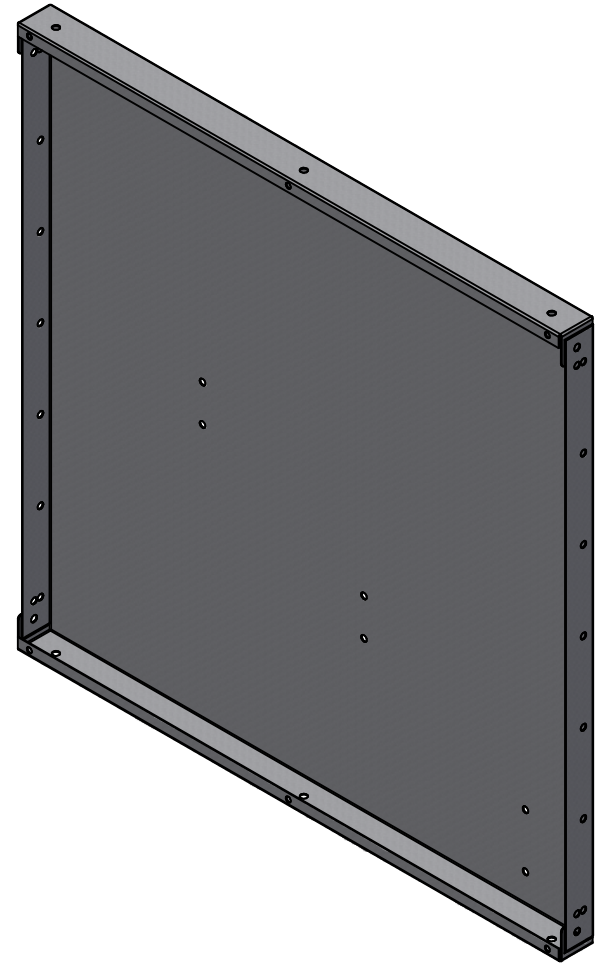
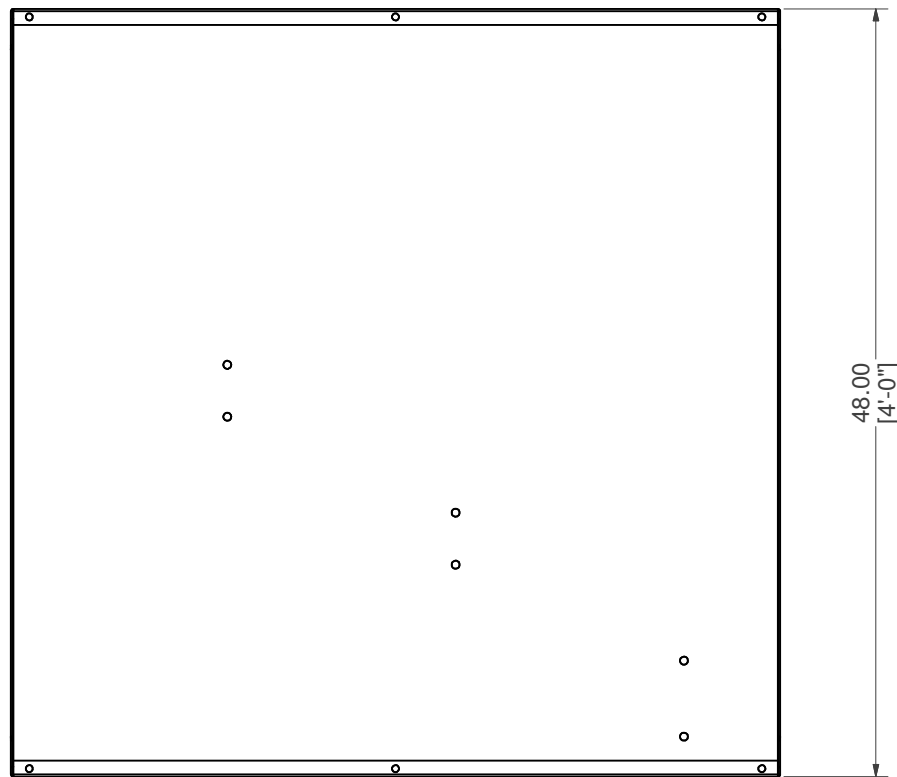
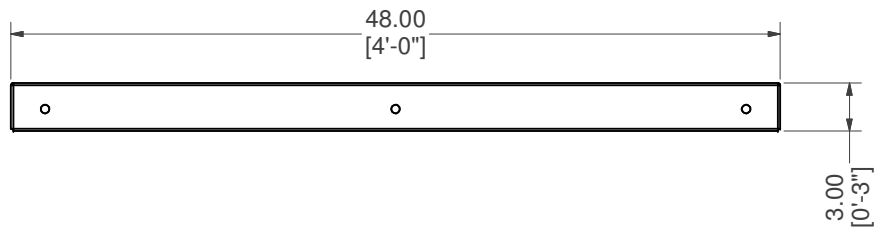
Parts List			
ITEM	QTY	PART NUMBER	DESCRIPTION
1	1	48-Z-RIB	48" Z-RIB
2	1	ESC-17295-SWR	STRAIGHT, SIDE WALL, RIGHT

# WELDCODE #17



## STRAIGHT, SIDE WALL, RIGHT W/ Z-RIBS

<b>PART #:</b> ESC-17295-SWR 	<b>WEIGHT:</b> 77.08 lbmass	<b>MACHINE TIME:</b> N/A	<b>FILE/DIRECTORY:</b> C:\Vault\FTW\Design\CUSTOM STEPS\ESC-17000-17999\ESC-17295.idw
	<b>TOLERANCES EXCEPT AS NOTED</b> 0/0 0.0 0.00 0.000 0' ±1/8 ±0.25 ±0.0625 ±0.03125 ±1/2'	<b>MATERIAL:</b>  <b>DRAWN BY:</b> VD	<b>DATE :</b> 7/26/2023  <b>SHEET :</b> 5 OF 30



## STRAIGHT, SIDE WALL, LEFT

**PART #:** ESC-17295-SWL

**WEIGHT:**  
58.64 lbmass

**MACHINE TIME:**  
N/A

**FILE/DIRECTORY:**  
C:\Vault\FTW\Design\CUSTOM STEPS\ESC-17000-17999\ESC-17295.idw

*latham*  
The Pool Company

TOLERANCES EXCEPT  
AS NOTED  
0/0 0.0 0.00 0.000 0'  
±1/8 ±0.25 ±0.0625 ±0.03125 ±1/2'

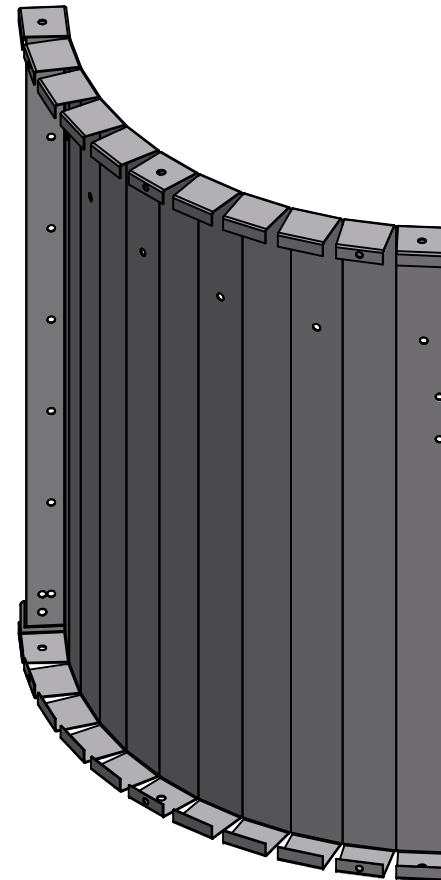
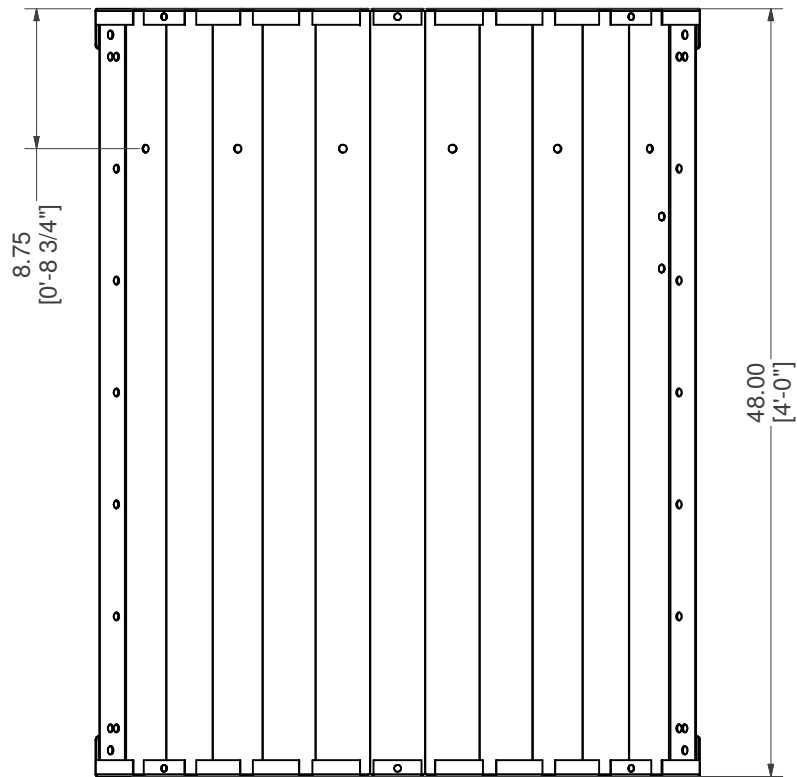
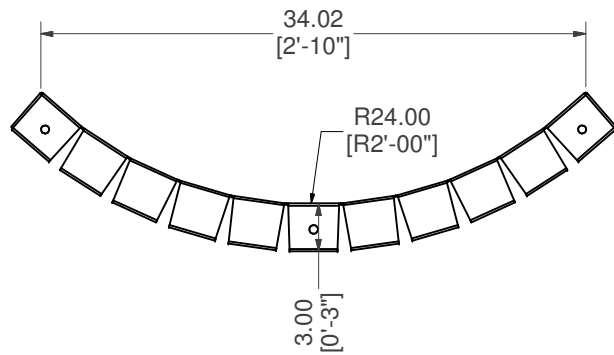
**MATERIAL:**  
14 GA. GALVANIZED

**DATE :** 7/26/2023


**NOTES:**

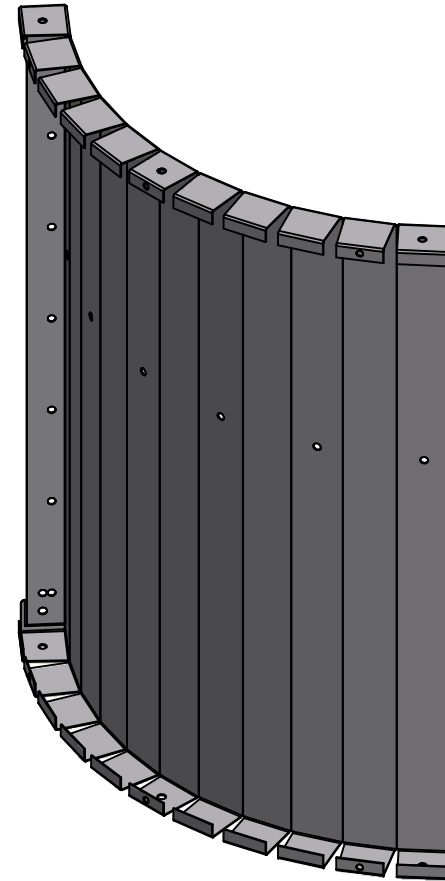
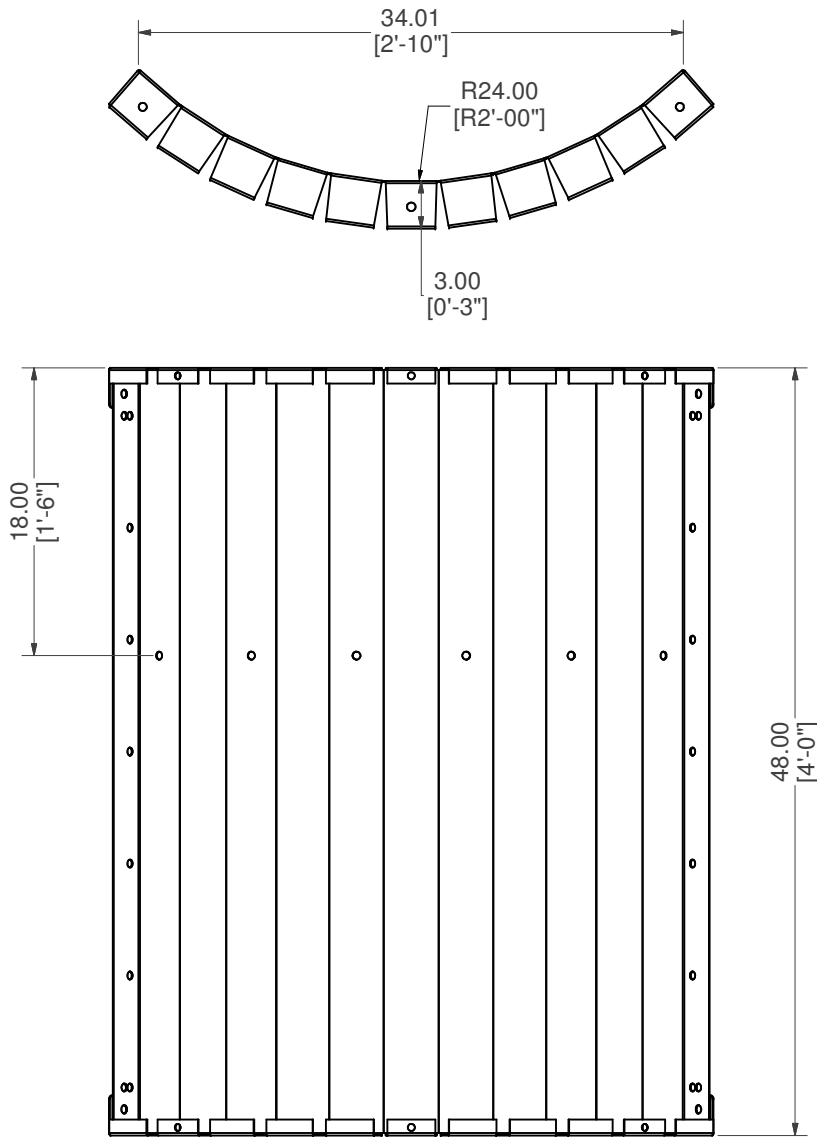
**DRAWN BY:** VD

**SHEET :** 6 OF 30



## RADIUS, CORNER WALL, LEFT

<b>PART #:</b> ESC-17295-CWL	<b>WEIGHT:</b> 46.51 lbmass	<b>MACHINE TIME:</b> N/A	<b>FILE/DIRECTORY:</b> C:\Vault\FTW\Design\CUSTOM STEPS\ESC-17000-17999\ESC-17295.idw
	TOLERANCES EXCEPT AS NOTED 0/0 0.0 0.00 0.000 0' ±1/8 ±0.25 ±0.0625 ±0.03125 ±1/2'	<b>MATERIAL:</b> 14 GA. GALVANIZED	<b>DATE :</b> 7/26/2023
		<b>DRAWN BY:</b> VD	<b>SHEET :</b> 7 OF 30
<b>NOTES:</b>			



## REV. RAD, CORNER WALL, RIGHT

**PART #:** ESC-9625-CWR

**WEIGHT:**  
46.52 lbmass

**MACHINE TIME:**  
N/A

**FILE/DIRECTORY:**

C:\Vault\FTW\Design\CUSTOM STEPS\ESC-17000-17999\ESC-17295.idw

*latham*  
The Pool Company

TOLERANCES EXCEPT  
AS NOTED  
0/0 0.0 0.00 0.000 0'  
±1/8 ±0.25 ±0.0625 ±0.03125 ±1/2'

**MATERIAL:**  
14 GA. GALVANIZED

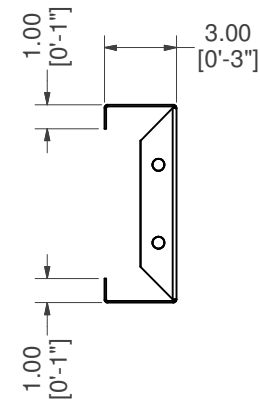
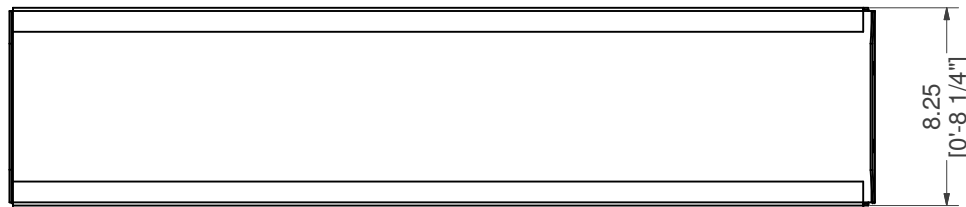
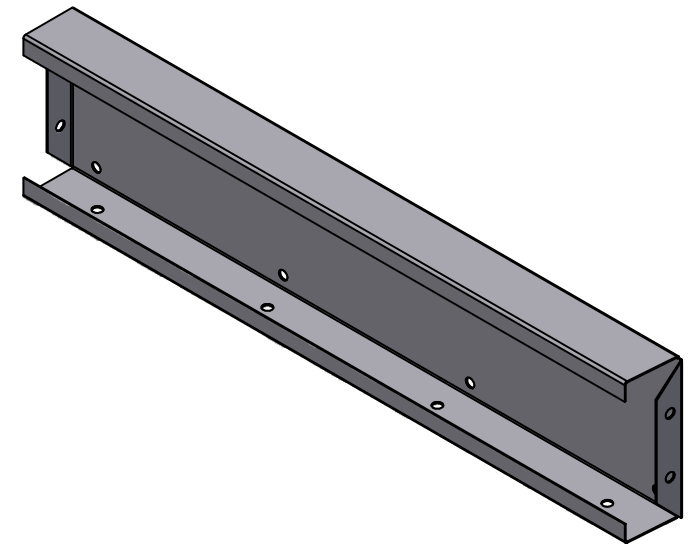
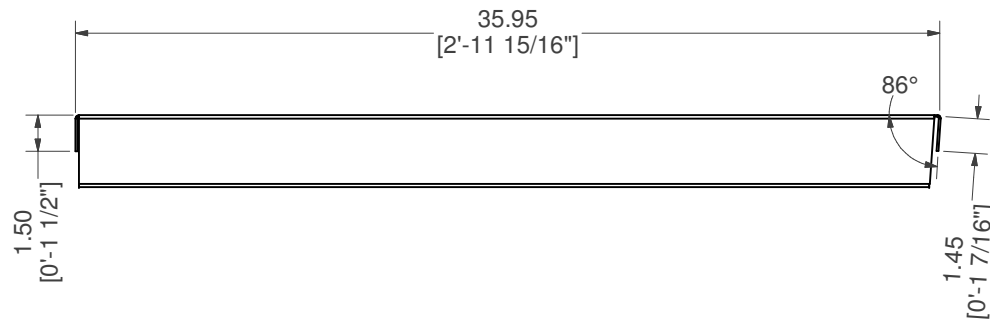
**DATE :** 7/26/2023

**NOTES:**

**DRAWN BY:** VD

**SHEET :** 8 OF 30





## STRAIGHT, TOP RISER, LEFT

**PART #:** ESC-17295-TRL

**WEIGHT:**  
11.79 lbmass

**MACHINE TIME:**  
N/A

**FILE/DIRECTORY:**

C:\Vault\FTW\Design\CUSTOM STEPS\ESC-17000-17999\ESC-17295.idw

*latham*  
The Pool Company

TOLERANCES EXCEPT  
AS NOTED

0/0 0.0 0.00 0.000 0'  
±1/8 ±0.25 ±0.0625 ±0.03125 ±1/2'

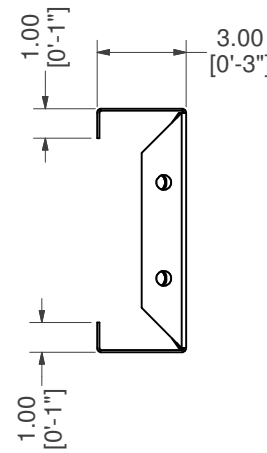
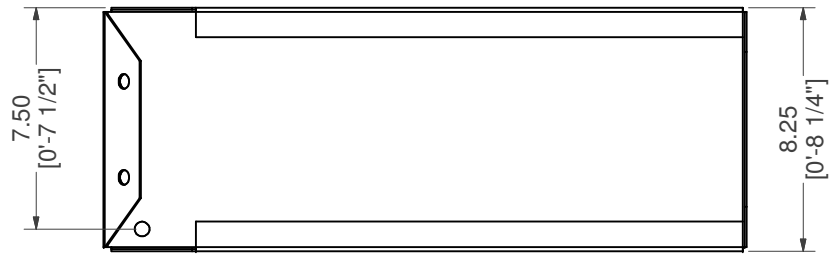
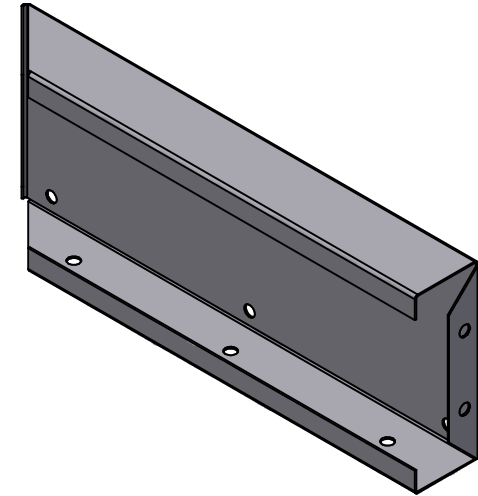
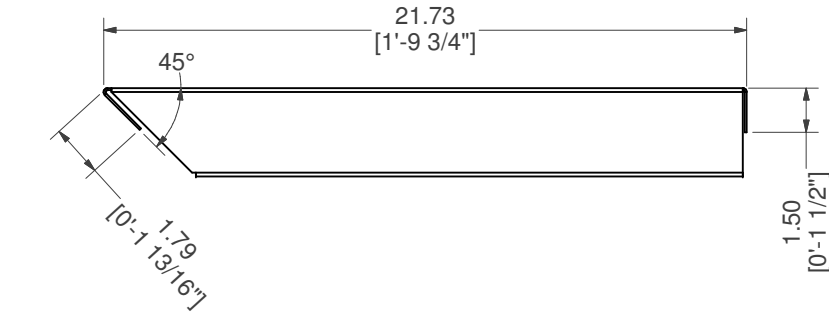
**MATERIAL:**  
14 GA. GALVANIZED

**DRAWN BY:**  
VD

**DATE :** 7/26/2023

**SHEET :** 9 OF 30

**NOTES:**



# STRAIGHT, TOP RISER, RIGHT

**PART #:** ESC-17295-TRR

**WEIGHT:**  
7.02 lbmass

**MACHINE TIME:**  
N/A

**FILE/DIRECTORY:**  
C:\Vault\FTW\Design\CUSTOM STEPS\ESC-17000-17999\ESC-17295.idw



TOLERANCES EXCEPT AS NOTED  
0/0 0.0 0.00 0.000 0'  
±1/8 ±0.25 ±0.0625 ±0.03125 ±1/2'

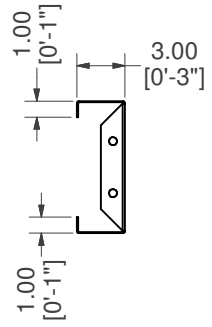
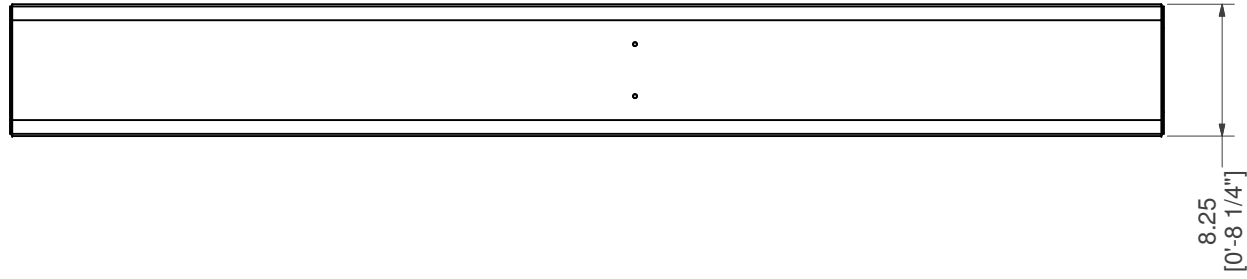
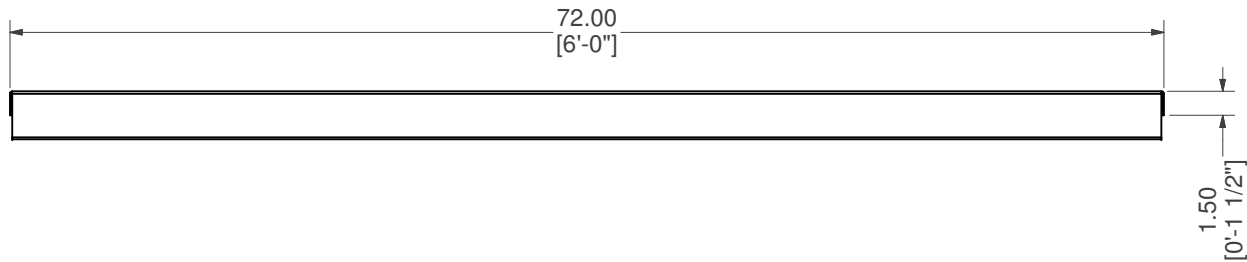
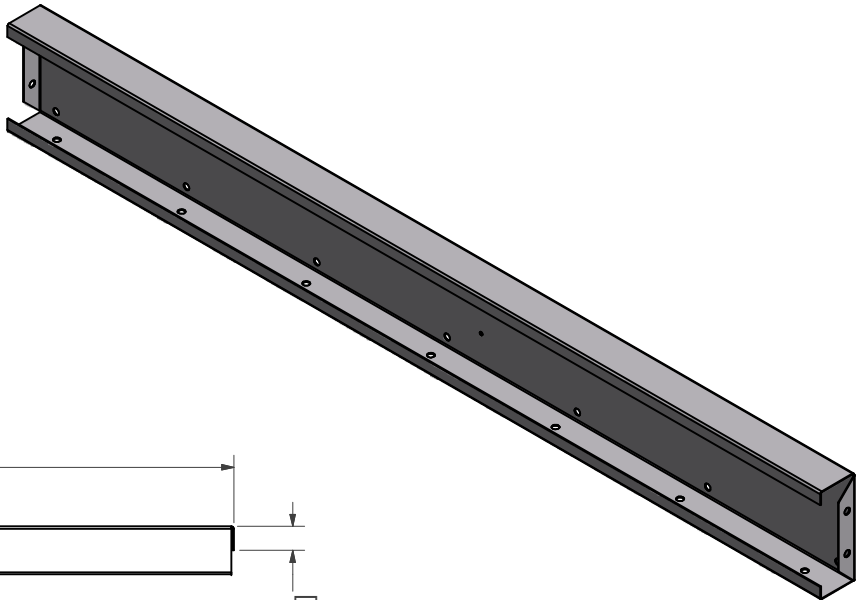
**MATERIAL:**  
14 GA. GALVANIZED

**DATE :** 7/26/2023


**NOTES:**

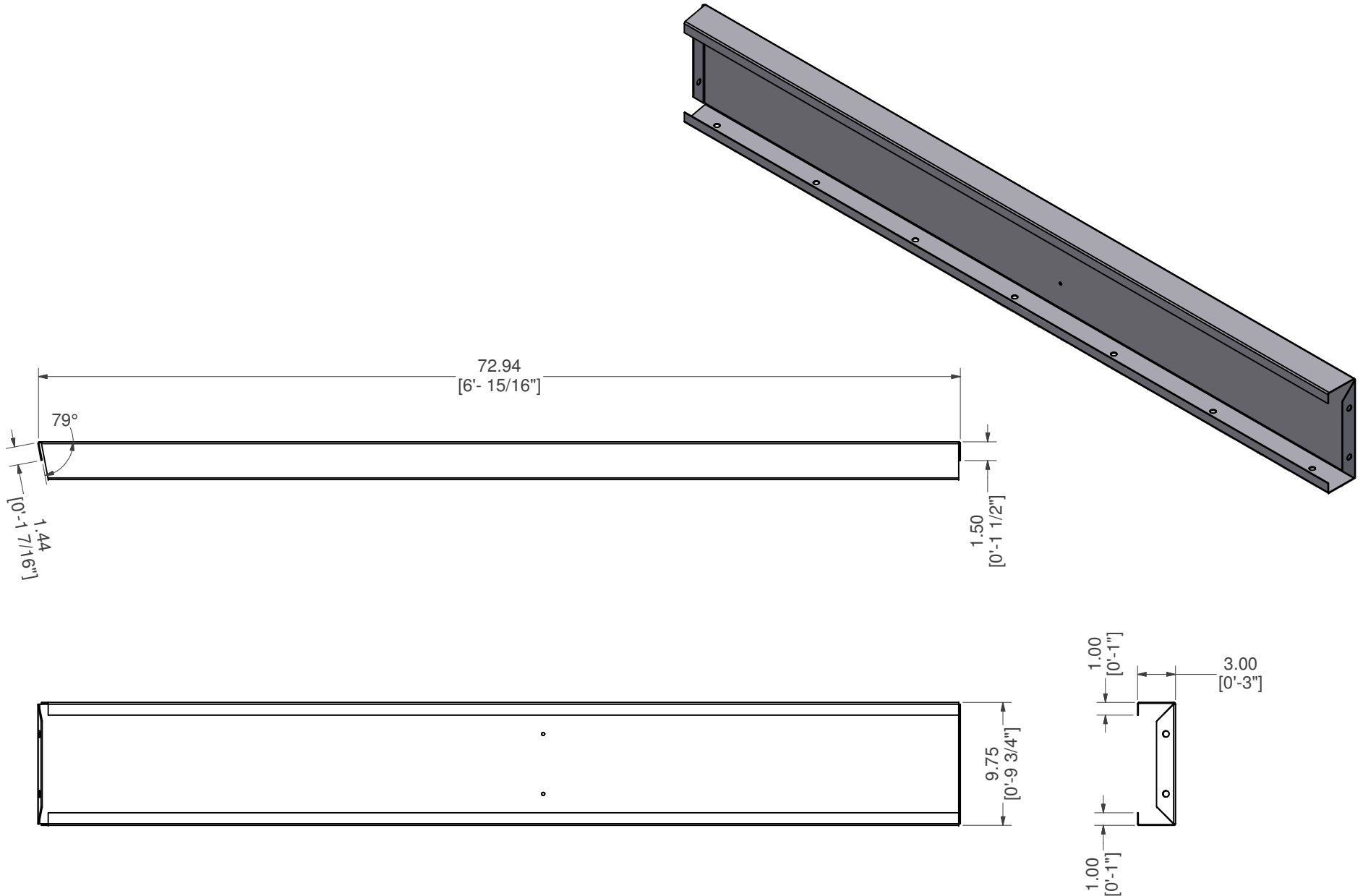
**DRAWN BY:** VD

**SHEET :** 10 OF 30




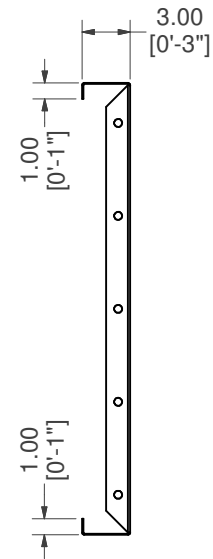
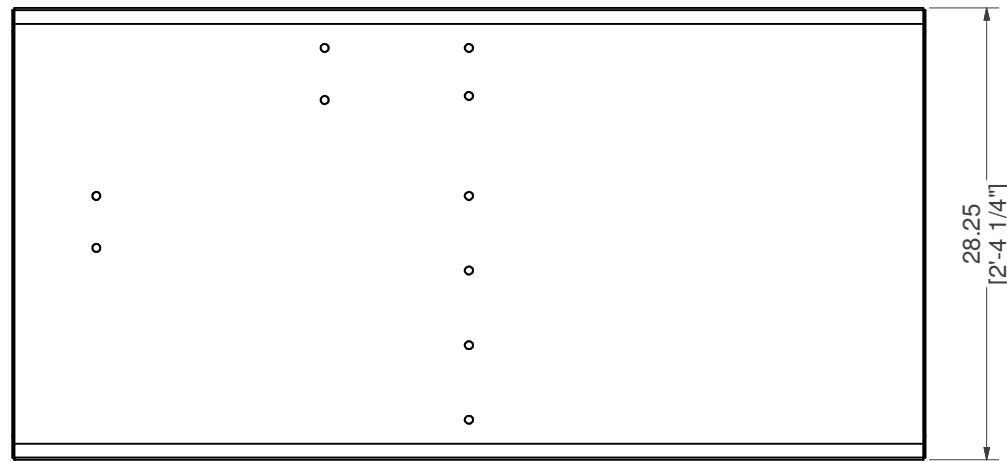
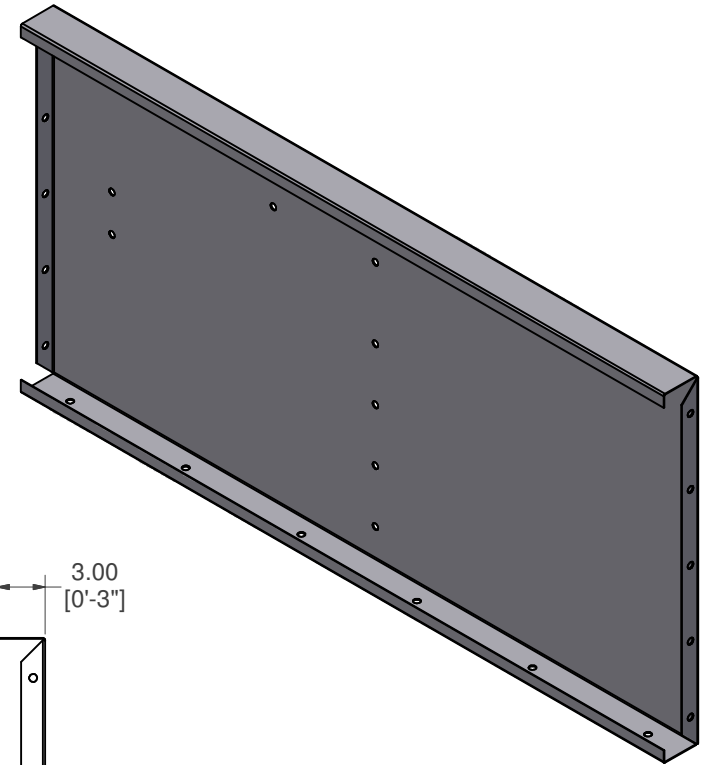
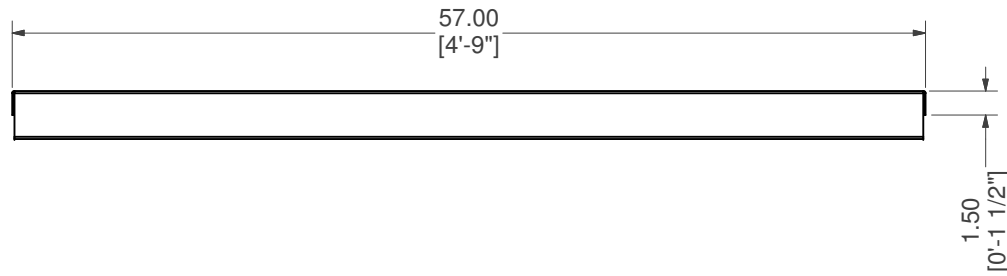
# STRAIGHT, MIDDLE RISER

<b>PART #:</b> ESC-17295-MR	<b>WEIGHT:</b> 23.35 lbmass	<b>MACHINE TIME:</b> N/A	<b>FILE/DIRECTORY:</b> C:\Vault\FTW\Design\CUSTOM STEPS\ESC-17000-17999\ESC-17295.idw
	<b>TOLERANCES EXCEPT AS NOTED</b> 0/0 0.0 0.00 0.000 0' ±1/8 ±0.25 ±0.0625 ±0.03125 ±1/2'	<b>MATERIAL:</b> 14 GA. GALVANIZED	<b>DATE :</b> 7/26/2023
		<b>DRAWN BY:</b> VD	<b>SHEET :</b> 11 OF 30
<b>NOTES:</b>			



# STRAIGHT, BOTTOM RISER

<b>PART #:</b> ESC-9625-BR	<b>WEIGHT:</b> 25.93 lbmass	<b>MACHINE TIME:</b> N/A	<b>FILE/DIRECTORY:</b> C:\Vault\FTW\Design\CUSTOM STEPS\ESC-17000-17999\ESC-17295.idw
	TOLERANCES EXCEPT AS NOTED 0/0 0.0 0.00 0.000 0' ±1/8 ±0.25 ±0.0625 ±0.03125 ±1/2'	<b>MATERIAL:</b> 14 GA. GALVANIZED  <b>DRAWN BY:</b> VD	<b>DATE :</b> 7/26/2023  <b>SHEET :</b> 12 OF 30
<b>NOTES:</b>			



## STRAIGHT, SUNLEDGE RISER, END

**PART #:** ESC-17295-SRE

**WEIGHT:**  
42.80 lbmass

**MACHINE TIME:**  
N/A

**FILE/DIRECTORY:**

C:\Vault\FTW\Design\CUSTOM STEPS\ESC-17000-17999\ESC-17295.idw

*latham*  
The Pool Company

TOLERANCES EXCEPT  
AS NOTED  
0/0 0.0 0.00 0.000 0'  
±1/8 ±0.25 ±0.0625 ±0.03125 ±1/2'

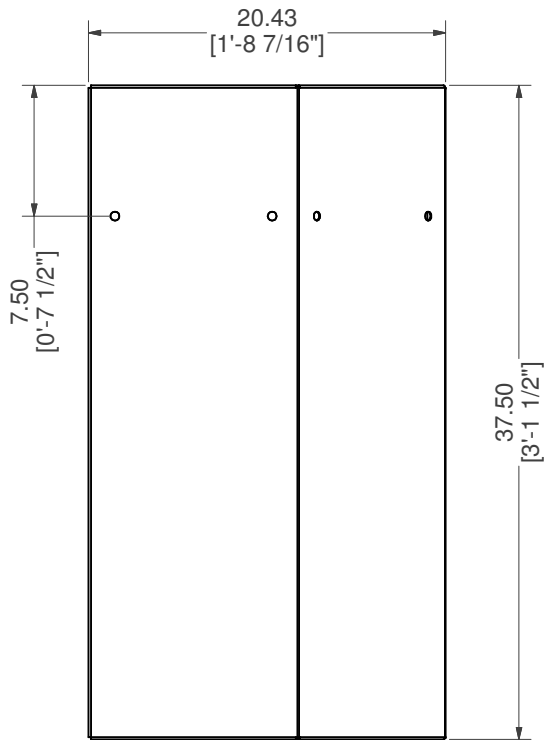
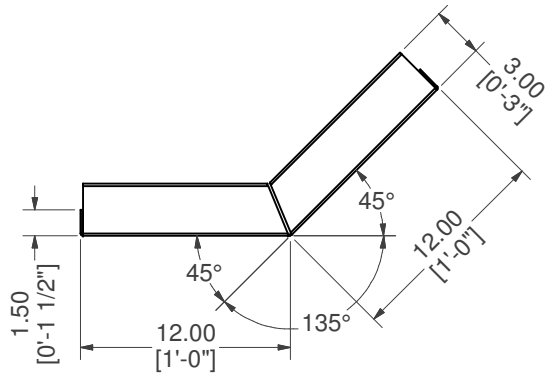
**MATERIAL:**  
14 GA. GALVANIZED

**DATE:** 7/26/2023

**NOTES:**

**DRAWN BY:** VD

**SHEET:** 13 OF 30



# STR REV, TOP RISER

**PART #:** ESC-17295-SRTR

**WEIGHT:**  
23.57 lbmass

**MACHINE TIME:**  
N/A

**FILE/DIRECTORY:**

C:\Vault\FTW\Design\CUSTOM STEPS\ESC-17000-17999\ESC-17295.idw



TOLERANCES EXCEPT AS NOTED  
0/0 0.0 0.00 0.000 0'  
±1/8 ±0.25 ±0.0625 ±0.03125 ±1/2'

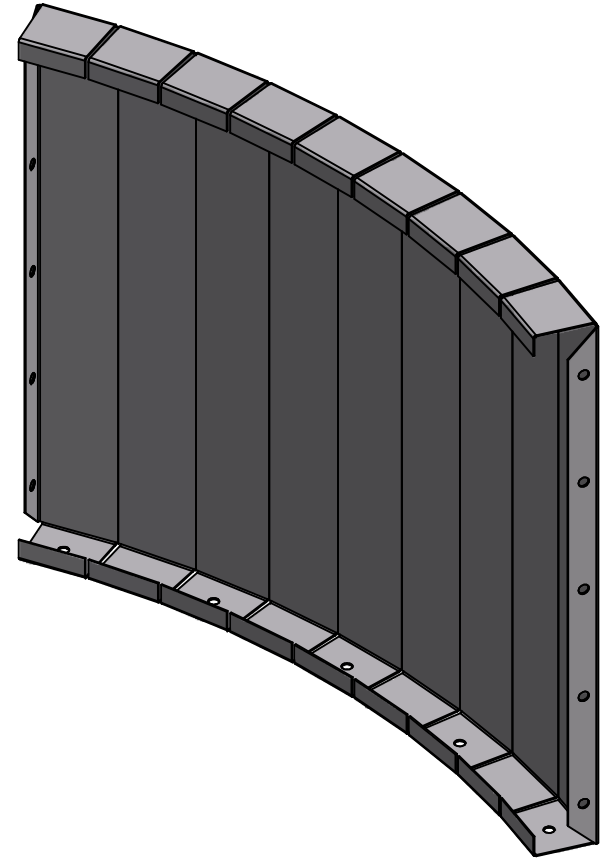
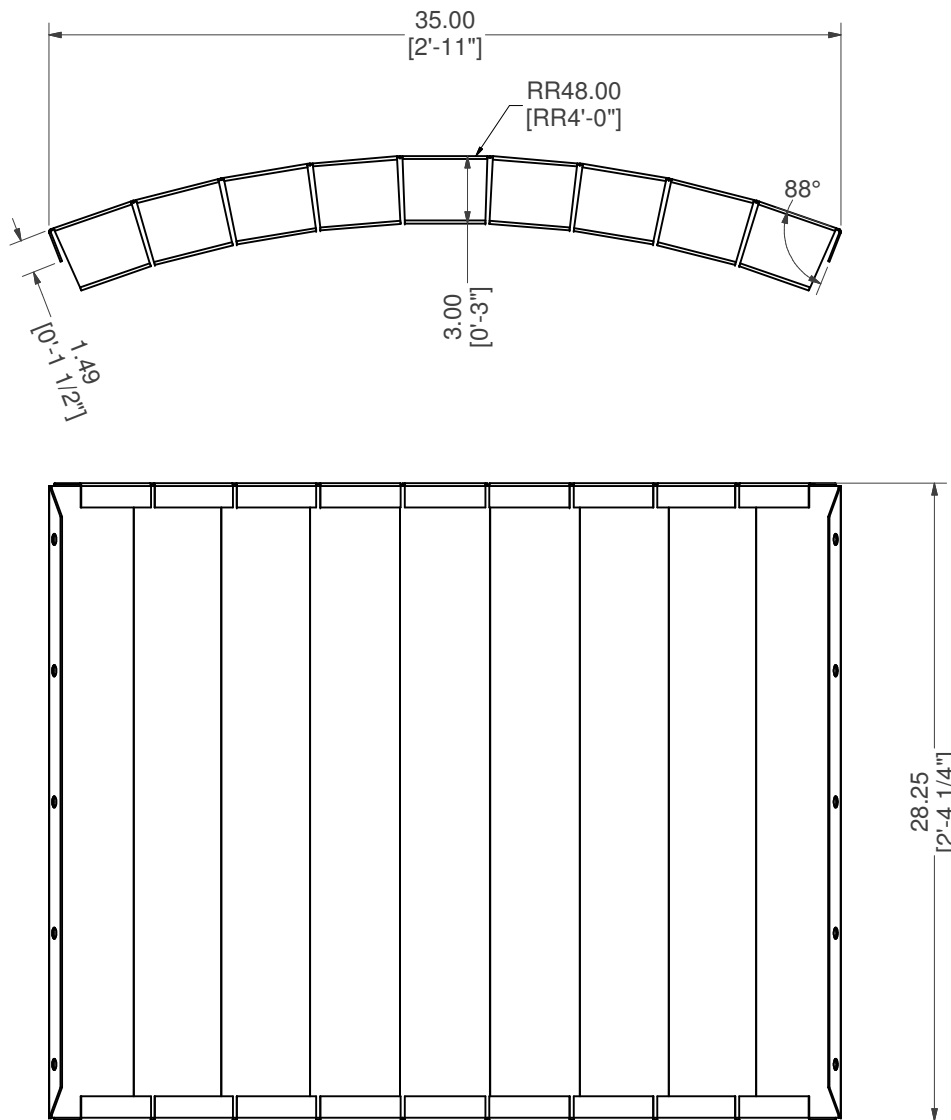
**MATERIAL:**  
14 GA. GALVANIZED

**DATE :** 7/26/2023

**NOTES:**

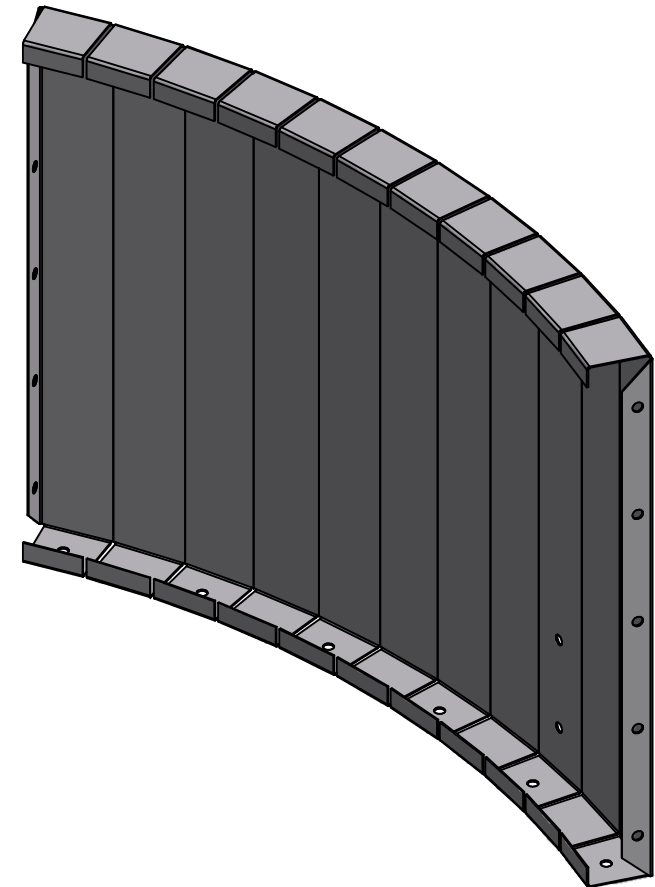
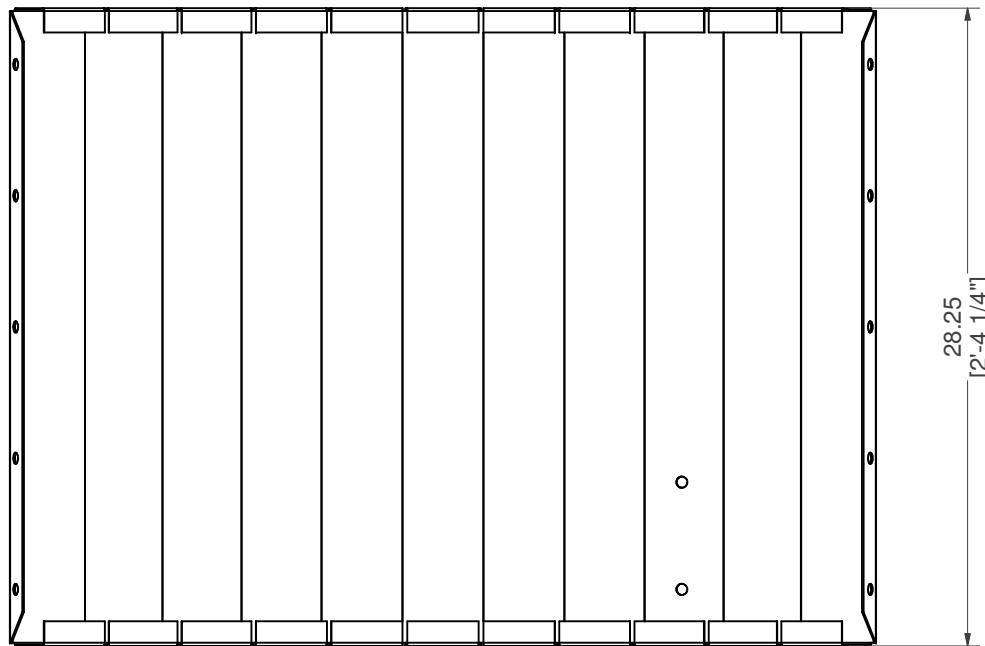
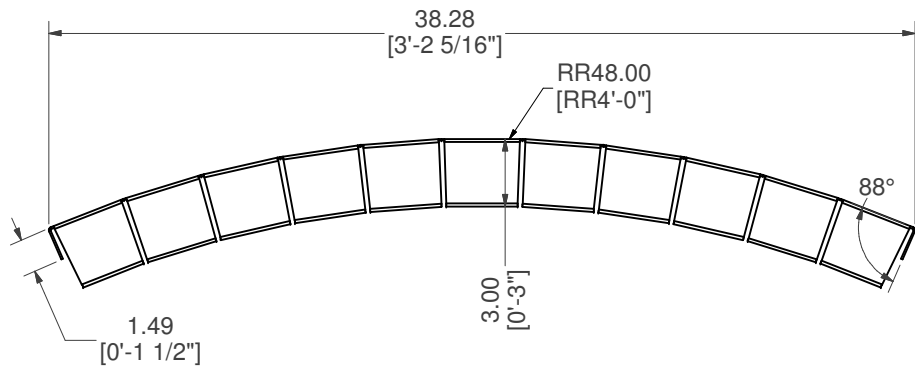
**DRAWN BY:** VD

**SHEET :** 14 OF 30




# REV RAD, SUNLEDGE RISER, MIDDLE

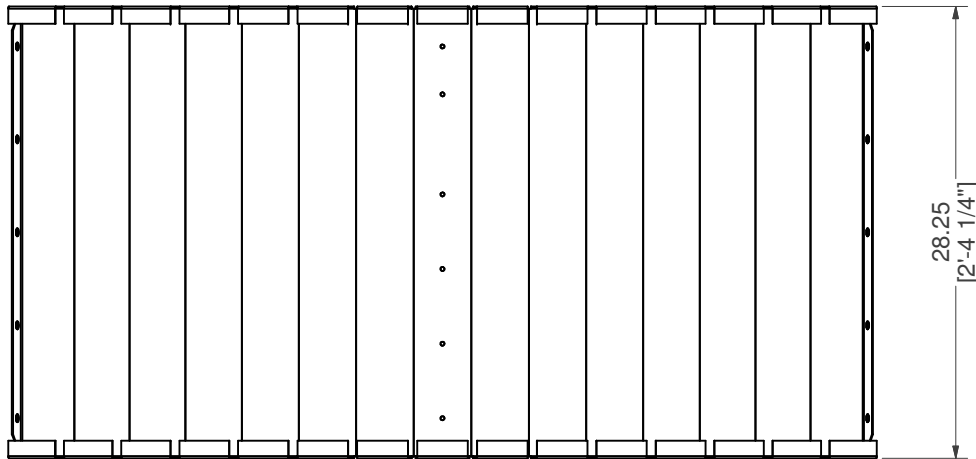
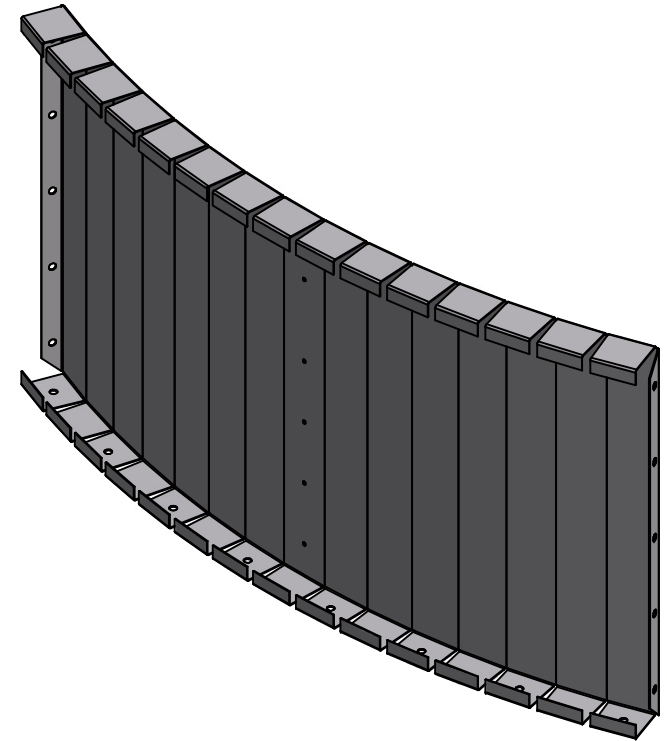
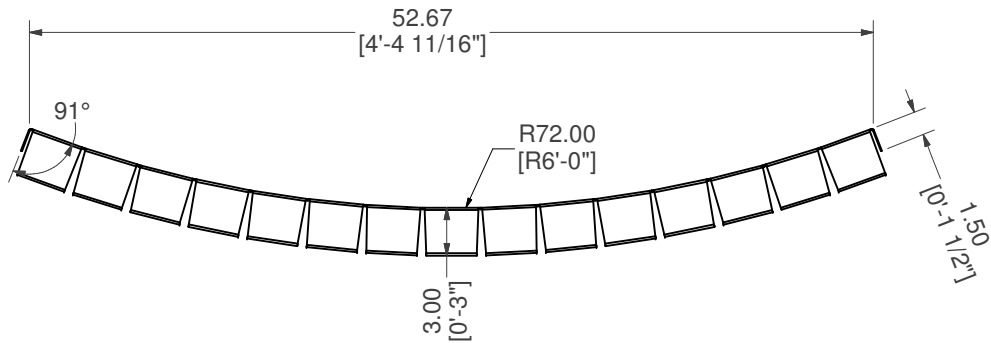
<b>PART #:</b> ESC-9625-SRM  	<b>WEIGHT:</b> 27.06 lbmass	<b>MACHINE TIME:</b> N/A	<b>FILE/DIRECTORY:</b> C:\Vault\FTW\Design\CUSTOM STEPS\ESC-17000-17999\ESC-17295.idw
	TOLERANCES EXCEPT AS NOTED 0/0 0.0 0.00 0.000 0' ±1/8 ±0.25 ±0.0625 ±0.03125 ±1/2'	<b>MATERIAL:</b> 14 GA. GALVANIZED	<b>DATE :</b> 7/26/2023
	<b>DRAWN BY:</b> VD	<b>SHEET :</b> 15 OF 30	



# REV RAD, SUNLEDGE RISER, LEFT

<b>PART #:</b> ESC-9625-SRL  	<b>WEIGHT:</b> 29.53 lbmass	<b>MACHINE TIME:</b> N/A	<b>FILE/DIRECTORY:</b> C:\Vault\FTW\Design\CUSTOM STEPS\ESC-17000-17999\ESC-17295.idw
	TOLERANCES EXCEPT AS NOTED 0/0 0.0 0.00 0.000 0' ±1/8 ±0.25 ±0.0625 ±0.03125 ±1/2'	<b>MATERIAL:</b> 14 GA. GALVANIZED	<b>DATE :</b> 7/26/2023
	<b>DRAWN BY:</b> VD	<b>SHEET :</b> 16 OF 30	





## RADIUS, SUNLEDGE RISER, RIGHT

**PART #:** ESC-9625-SRR

**WEIGHT:**  
39.93 lbmass

**MACHINE TIME:**  
N/A

**FILE/DIRECTORY:**  
C:\Vault\FTW\Design\CUSTOM STEPS\ESC-17000-17999\ESC-17295.idw

*latham*  
The Pool Company

TOLERANCES EXCEPT  
AS NOTED  
0/0 0.0 0.00 0.000 0'  
±1/8 ±0.25 ±0.0625 ±0.03125 ±1/2'

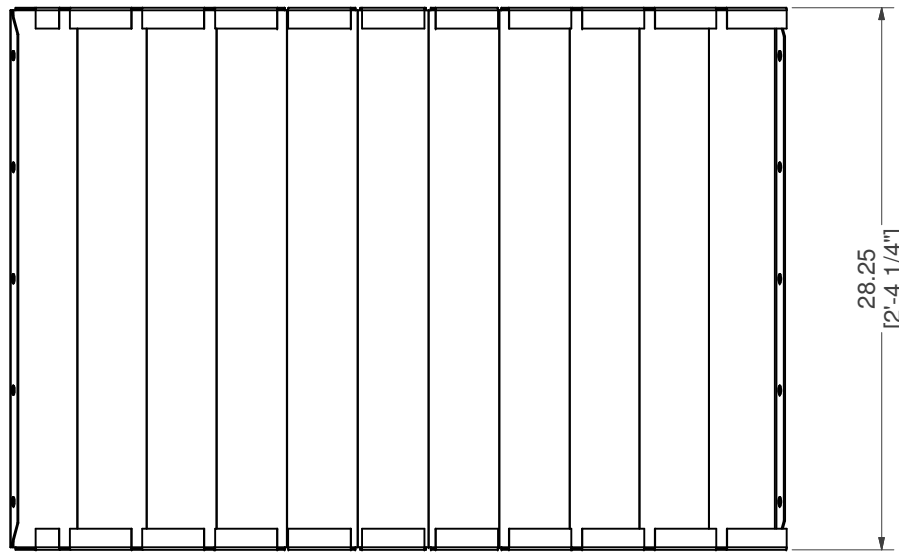
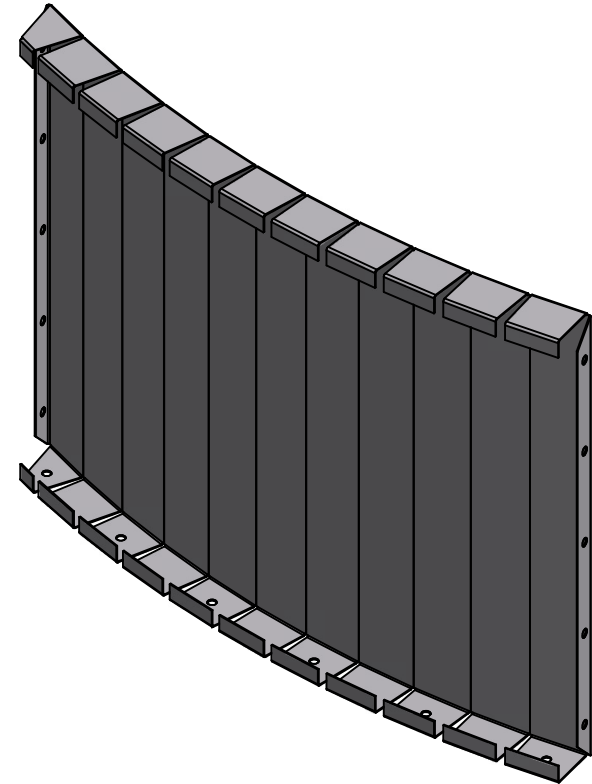
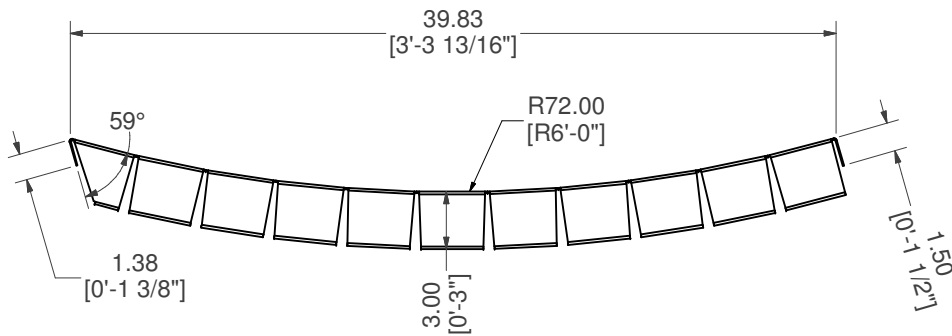
**MATERIAL:**  
14 GA. GALVANIZED

**DATE :** 7/26/2023

**NOTES:**

**DRAWN BY:** VD

**SHEET :** 17 OF 30



# RADIUS, SUNLEDGE RISER, RIGHT, END

**PART #:** ESC-9625-SRRE

**WEIGHT:**  
30.07 lbmass

**MACHINE TIME:**  
N/A

**FILE/DIRECTORY:**  
C:\Vault\FTW\Design\CUSTOM STEPS\ESC-17000-17999\ESC-17295.idw



TOLERANCES EXCEPT AS NOTED  
0/0 0.0 0.00 0.000 0'  
±1/8 ±0.25 ±0.0625 ±0.03125 ±1/2'

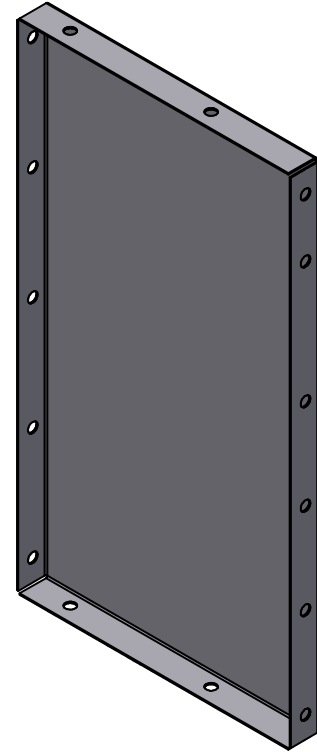
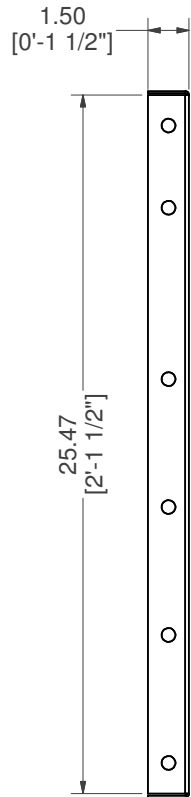
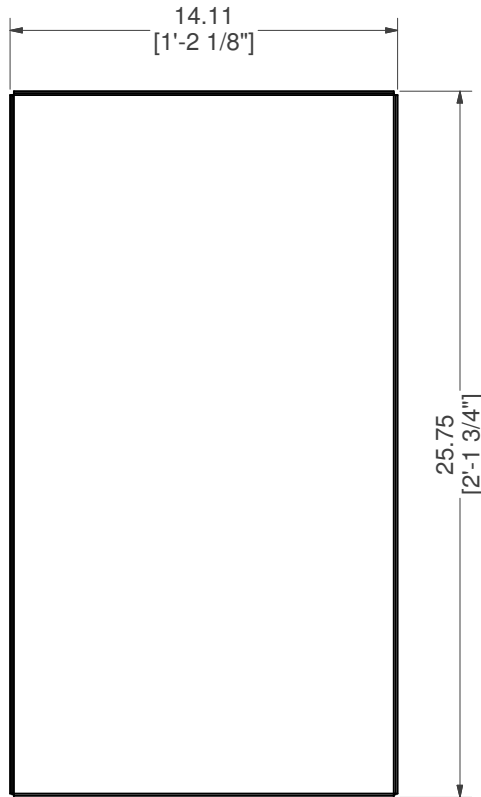
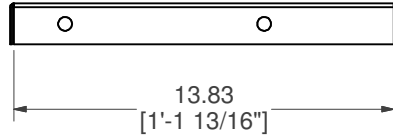
**MATERIAL:**  
14 GA. GALVANIZED

**DATE :** 7/26/2023


**NOTES:**

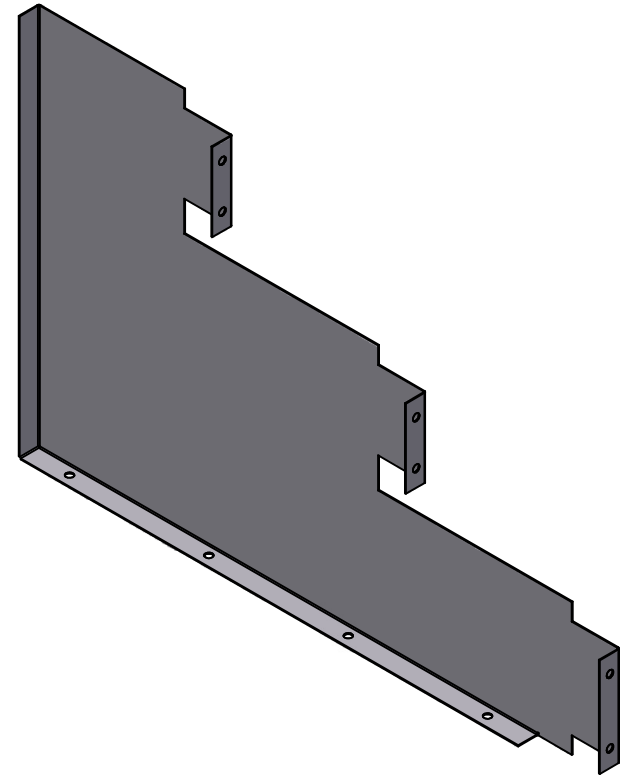
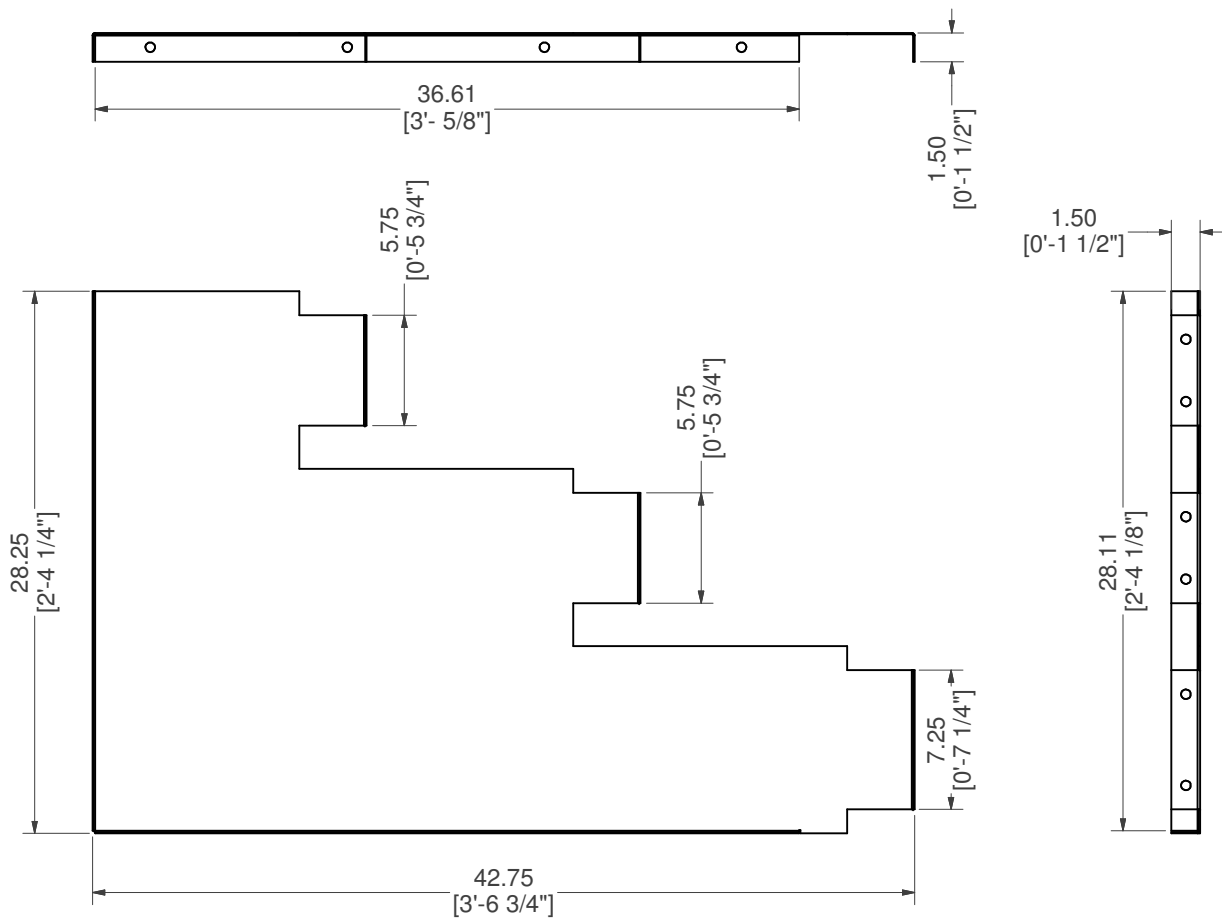
**DRAWN BY:** VD

**SHEET :** 18 OF 30




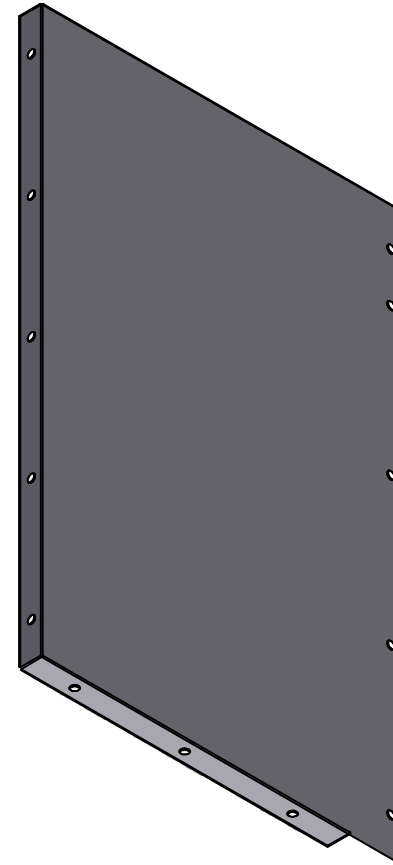
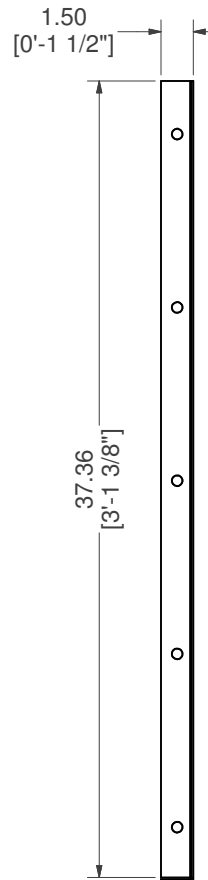
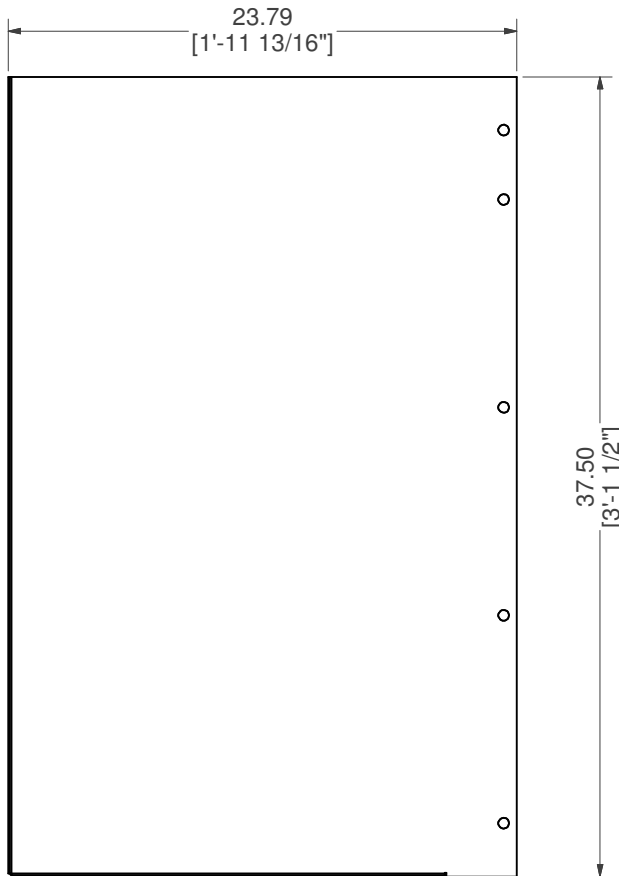
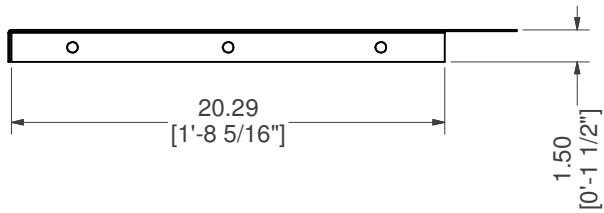
# BRACE, TOP MIDDLE RISER SUPPORT

<b>PART #:</b> ESC-8029-TMRS  	<b>WEIGHT:</b> 9.53 lbmass	<b>MACHINE TIME:</b> N/A	<b>FILE/DIRECTORY:</b> C:\Vault\FTW\Design\CUSTOM STEPS\ESC-17000-17999\ESC-17295.idw
	<b>TOLERANCES EXCEPT AS NOTED</b> 0/0 0.0 0.00 0.000 0' ±1/8 ±0.25 ±0.0625 ±0.03125 ±1/2'	<b>MATERIAL:</b> 14 GA. GALVANIZED	<b>DATE :</b> 7/26/2023
<b>DRAWN BY:</b> VD	<b>SHEET :</b> 19 OF 30		




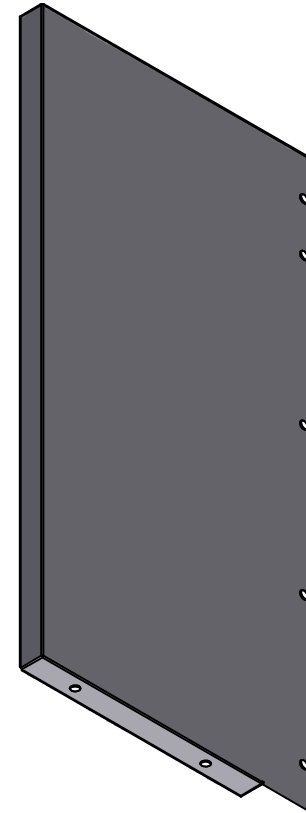
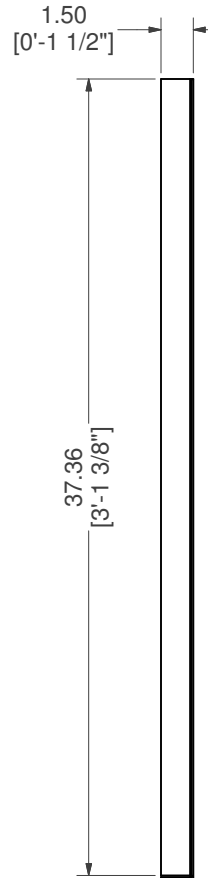
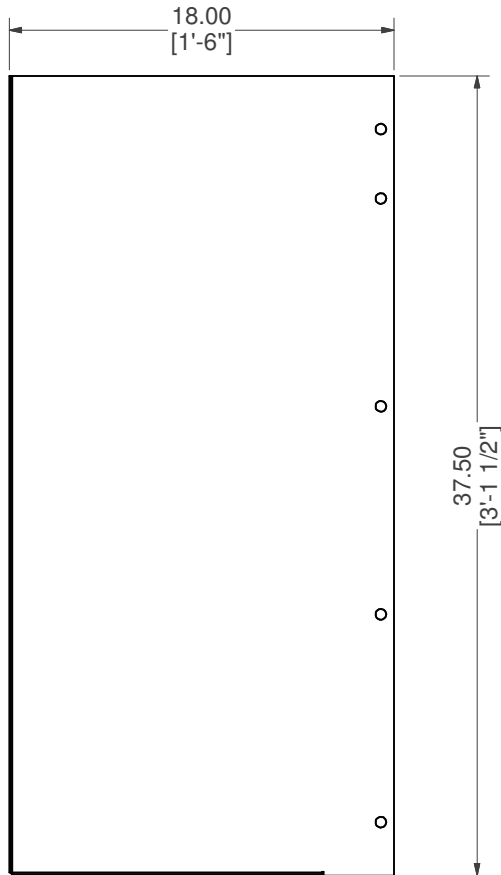
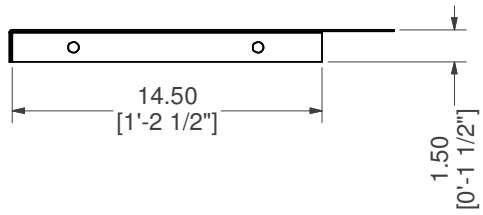
## BRACE, 3-RISER SUPPORT

<b>PART #:</b> ESC-17295-CSB	<b>WEIGHT:</b> 18.14 lbmass	<b>MACHINE TIME:</b> N/A	<b>FILE/DIRECTORY:</b> C:\Vault\FTW\Design\CUSTOM STEPS\ESC-17000-17999\ESC-17295.idw
	TOLERANCES EXCEPT AS NOTED	<b>MATERIAL:</b> 14 GA. GALVANIZED	<b>DATE:</b> 7/26/2023
	0/0 0.0 0.00 0.000 0'	<b>DRAWN BY:</b> VD	<b>SHEET:</b> 20 OF 30
	±1/8 ±0.25 ±0.0625 ±0.03125 ±1/2'		<b>NOTES:</b>



# BRACE, TOP RISER SUPPORT

<b>PART #:</b> ESC-17295-TRS	<b>WEIGHT:</b> 19.70 lbmass	<b>MACHINE TIME:</b> N/A	<b>FILE/DIRECTORY:</b> C:\Vault\FTW\Design\CUSTOM STEPS\ESC-17000-17999\ESC-17295.idw	
	<b>TOLERANCES EXCEPT AS NOTED</b> 0/0 0.0 0.00 0.000 0' ±1/8 ±0.25 ±0.0625 ±0.03125 ±1/2'	<b>MATERIAL:</b> 14 GA. GALVANIZED	<b>DATE :</b> 7/26/2023	<b>NOTES:</b>
		<b>DRAWN BY:</b> VD	<b>SHEET :</b> 21 <b>OF</b> 30	



## BRACE, TOP RISER SUPPORT, RIGHT

**PART #:** ESC-17295-TRSR

**WEIGHT:**  
15.15 lbmass

**MACHINE TIME:**  
N/A

**FILE/DIRECTORY:**  
C:\Vault\FTW\Design\CUSTOM STEPS\ESC-17000-17999\ESC-17295.idw

*latham*  
The Pool Company

TOLERANCES EXCEPT  
AS NOTED  
0/0 0.0 0.00 0.000 0'  
±1/8 ±0.25 ±0.0625 ±0.03125 ±1/2'

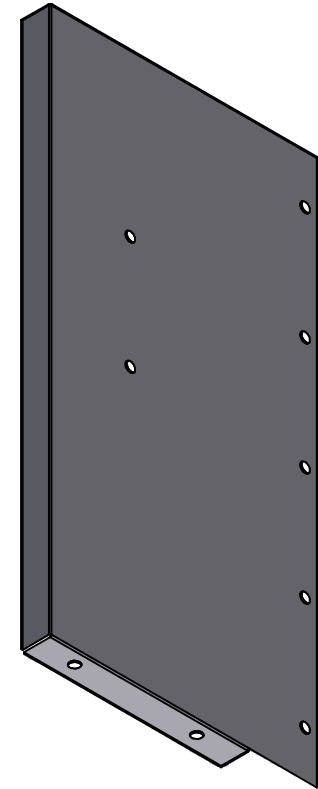
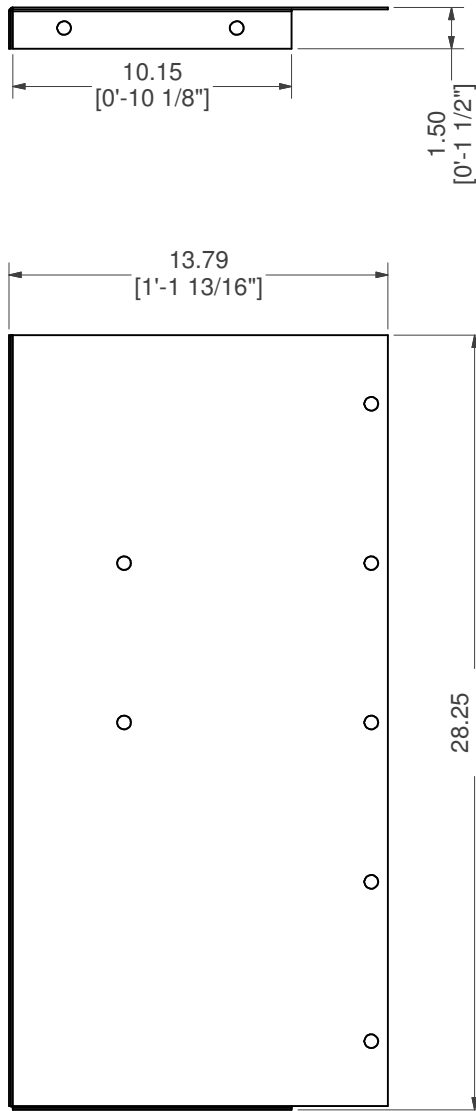
**MATERIAL:**  
14 GA. GALVANIZED

**DATE :** 7/26/2023


**NOTES:**

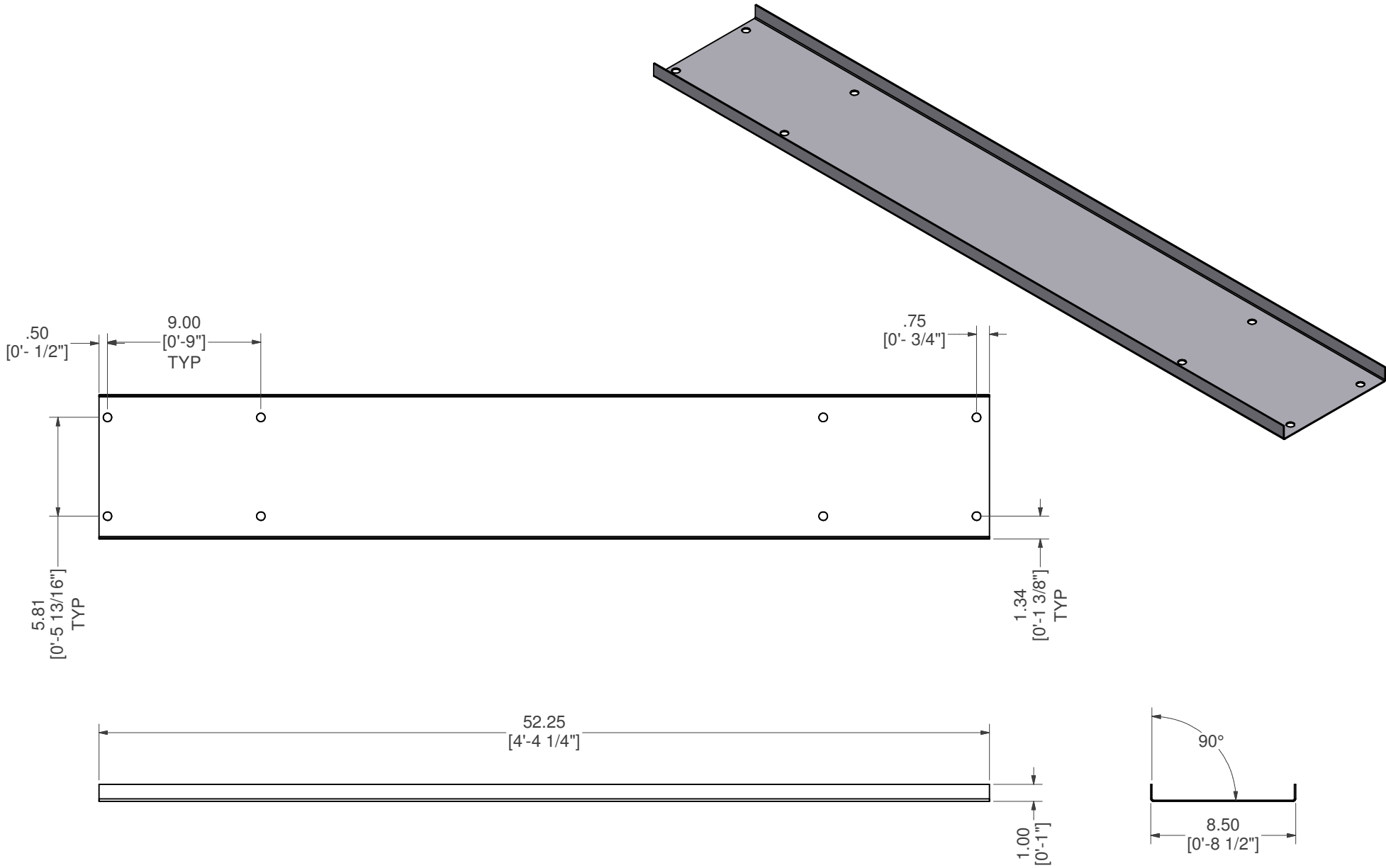
**DRAWN BY:** VD

**SHEET :** 22 OF 30




# BRACE, SUNLEDGE RISER SUPPORT

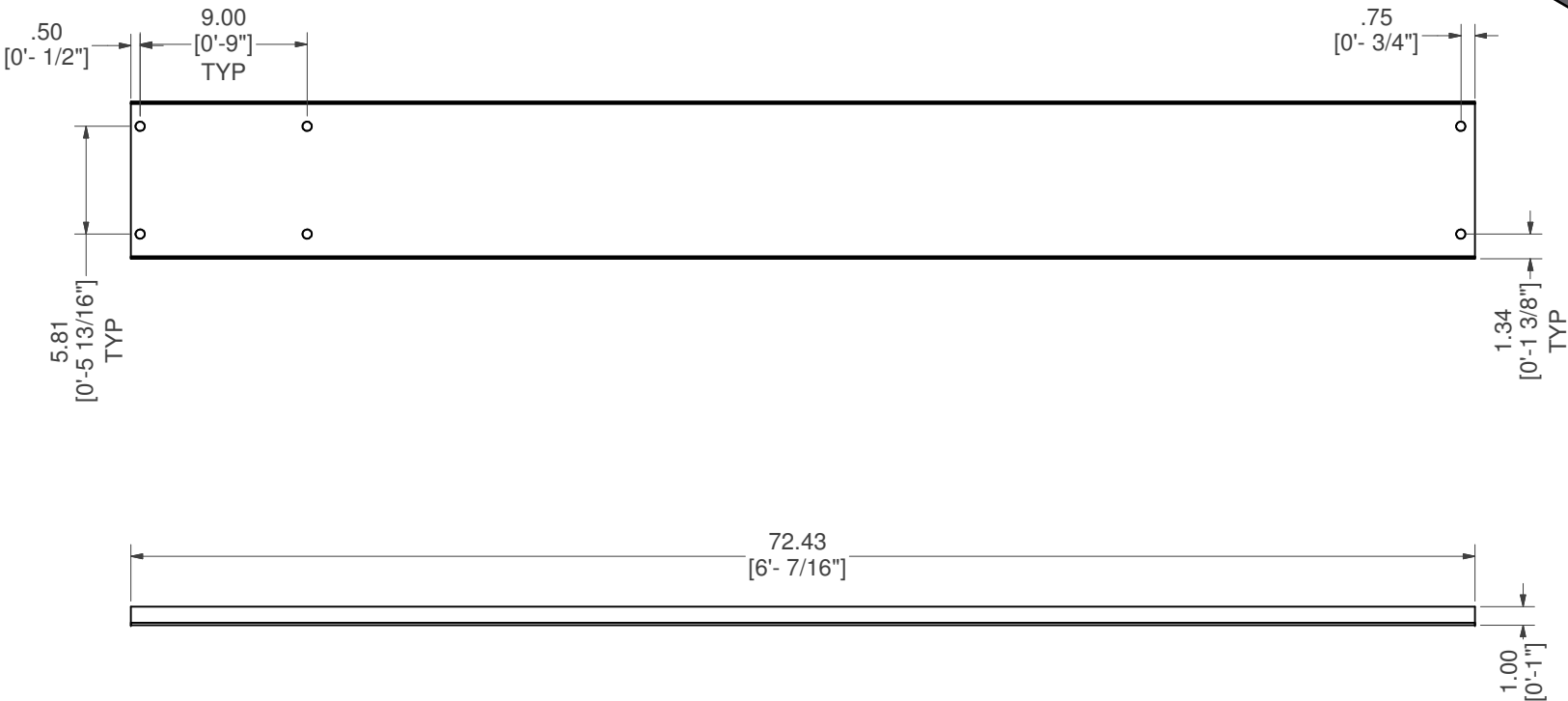
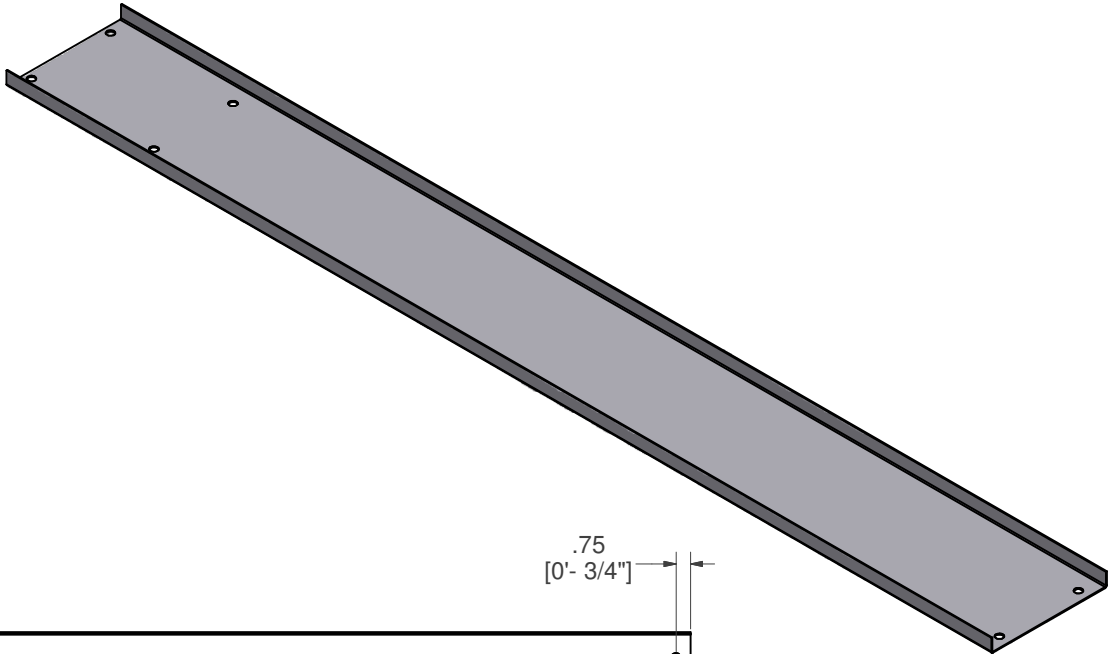
<b>PART #:</b> ESC-9625-SRS  	<b>WEIGHT:</b> 8.95 lbmass	<b>MACHINE TIME:</b> N/A	<b>FILE/DIRECTORY:</b> C:\Vault\FTW\Design\CUSTOM STEPS\ESC-17000-17999\ESC-17295.idw
	<b>TOLERANCES EXCEPT AS NOTED</b> 0/0 0.0 0.00 0.000 0' ±1/8 ±0.25 ±0.0625 ±0.03125 ±1/2'	<b>MATERIAL:</b> 14 GA. GALVANIZED	<b>DATE :</b> 7/26/2023
<b>DRAWN BY:</b> VD	<b>SHEET :</b> 23 OF 30		




# BRACE, CENTER SUPPORT

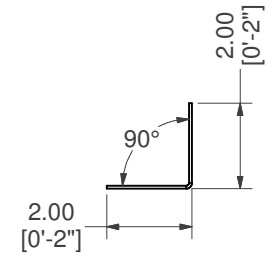
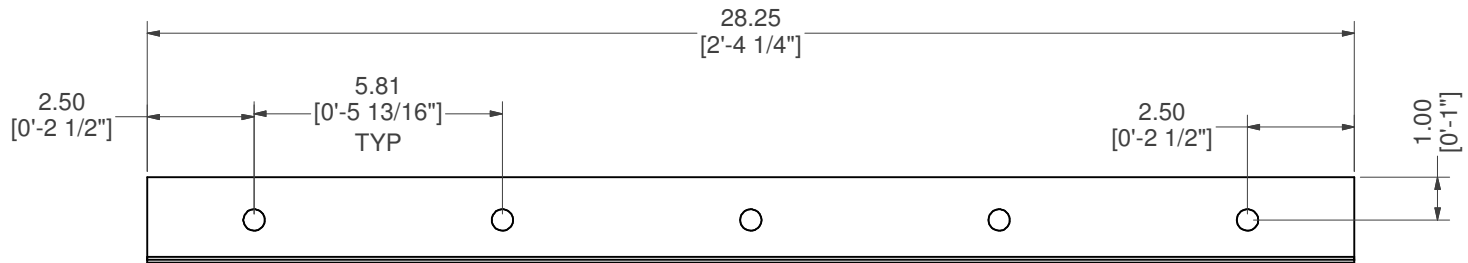
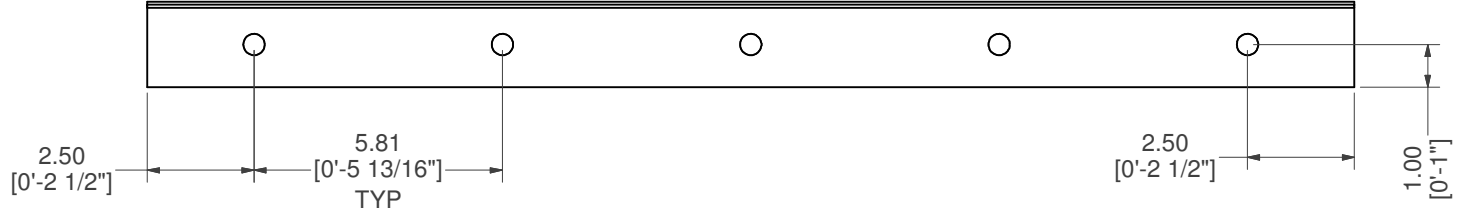
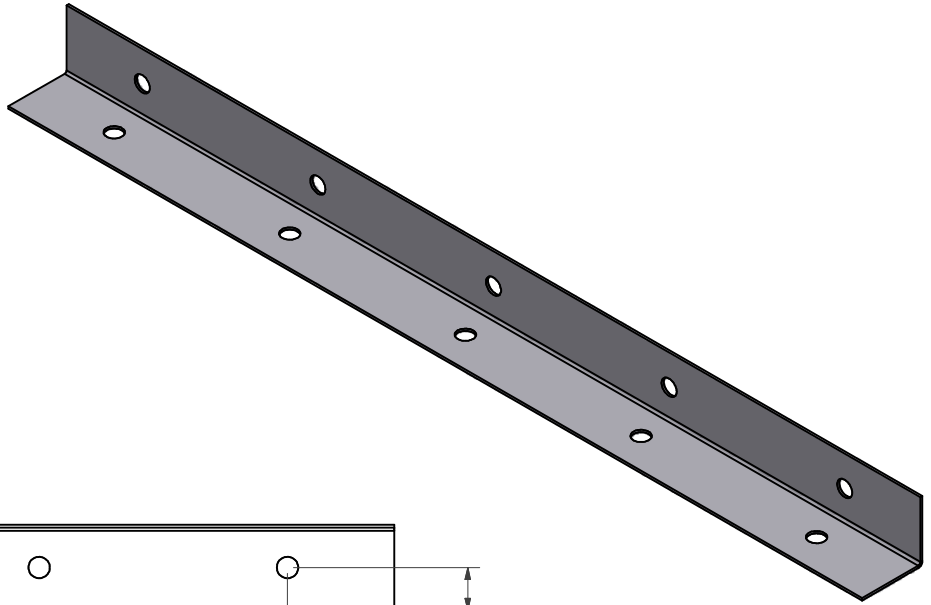
<b>PART #:</b> ESC-9625-CB  	<b>WEIGHT:</b> 10.87 lbmass	<b>MACHINE TIME:</b> N/A	<b>FILE/DIRECTORY:</b> C:\Vault\FTW\Design\CUSTOM STEPS\ESC-17000-17999\ESC-17295.idw
	TOLERANCES EXCEPT AS NOTED 0/0 0.0 0.00 0.000 0' ±1/8 ±0.25 ±0.0625 ±0.03125 ±1/2'	<b>MATERIAL:</b> 14 GA. GALVANIZED	<b>DATE :</b> 7/26/2023
<b>DRAWN BY:</b> VD	<b>SHEET :</b> 24 OF 30		






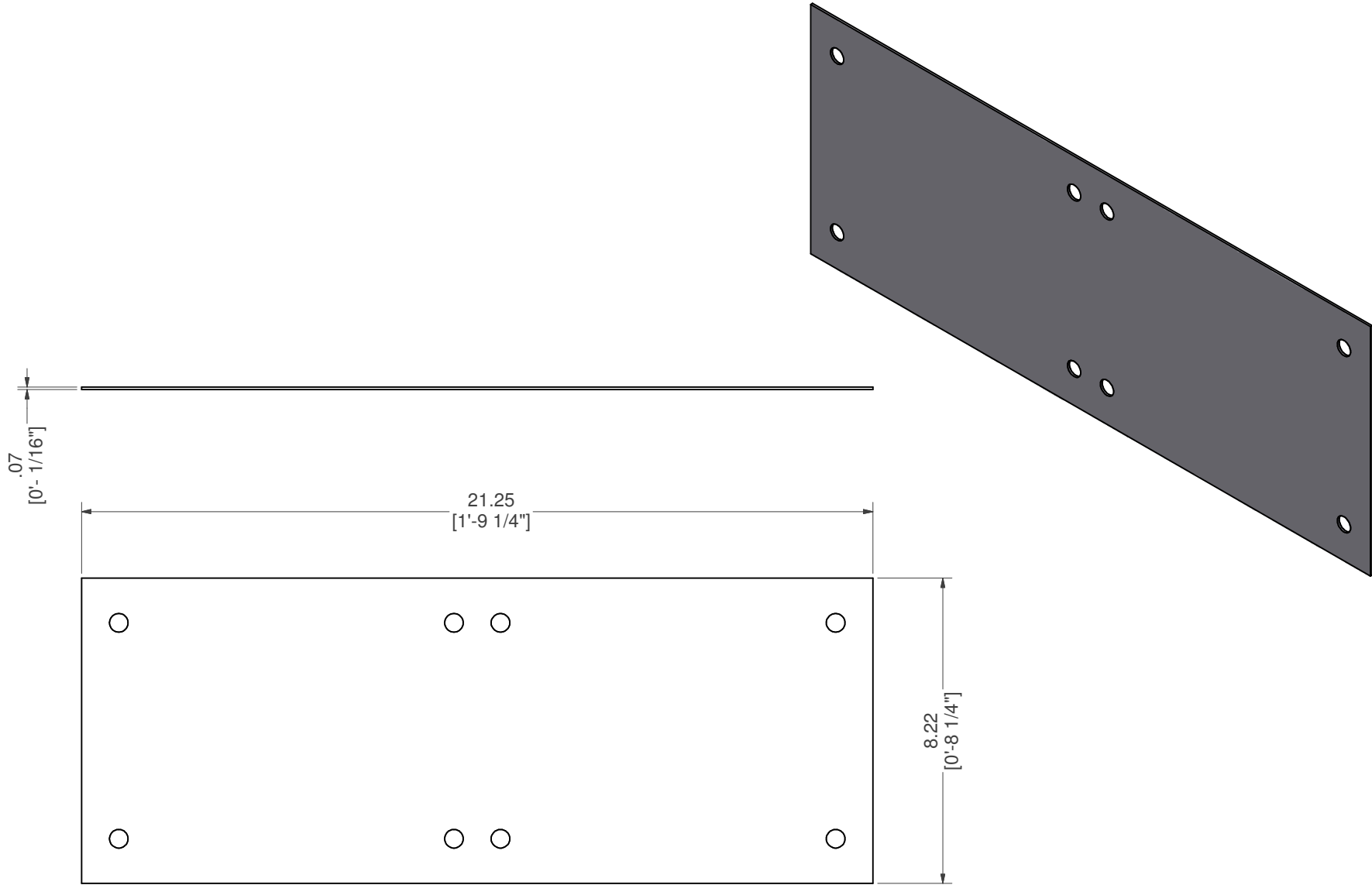
# BRACE, CENTER SUPPORT

<b>PART #:</b> ESC-9625-CB2	<b>WEIGHT:</b> 15.09 lbmass	<b>MACHINE TIME:</b> N/A	<b>FILE/DIRECTORY:</b> C:\Vault\FTW\Design\CUSTOM STEPS\ESC-17000-17999\ESC-17295.idw
	TOLERANCES EXCEPT AS NOTED 0/0 0.0 0.00 0.000 0' ±1/8 ±0.25 ±0.0625 ±0.03125 ±1/2'	<b>MATERIAL:</b> 14 GA. GALVANIZED  <b>DRAWN BY:</b> VD	<b>DATE :</b> 7/26/2023  <b>SHEET :</b> 25 OF 30  <b>NOTES:</b>




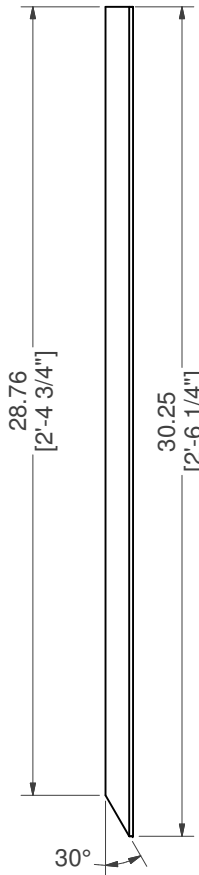
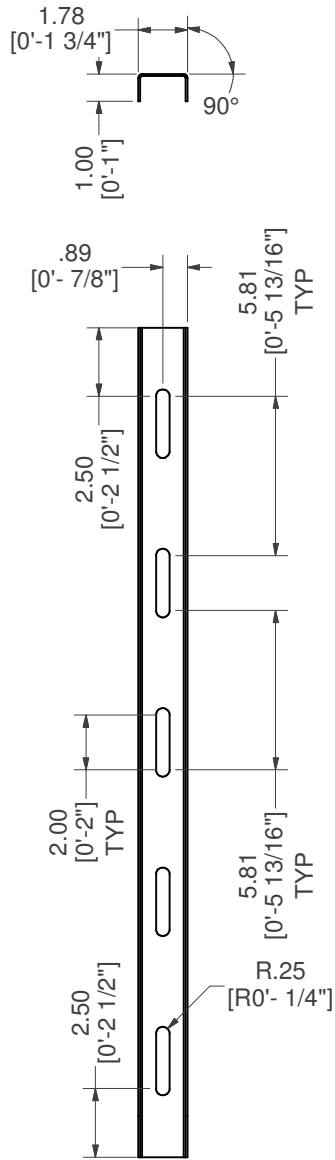
# BRACE, 90° L BRACKET

<b>PART #:</b> ESC-9625-BB  	<b>WEIGHT:</b> 2.19 lbmass	<b>MACHINE TIME:</b> N/A	<b>FILE/DIRECTORY:</b> C:\Vault\FTW\Design\CUSTOM STEPS\ESC-17000-17999\ESC-17295.idw
	TOLERANCES EXCEPT AS NOTED 0/0 0.0 0.00 0.000 0' ±1/8 ±0.25 ±0.0625 ±0.03125 ±1/2'	<b>MATERIAL:</b> 14 GA. GALVANIZED	<b>DATE:</b> 7/26/2023
<b>DRAWN BY:</b> VD	<b>SHEET:</b> 26 OF 30		




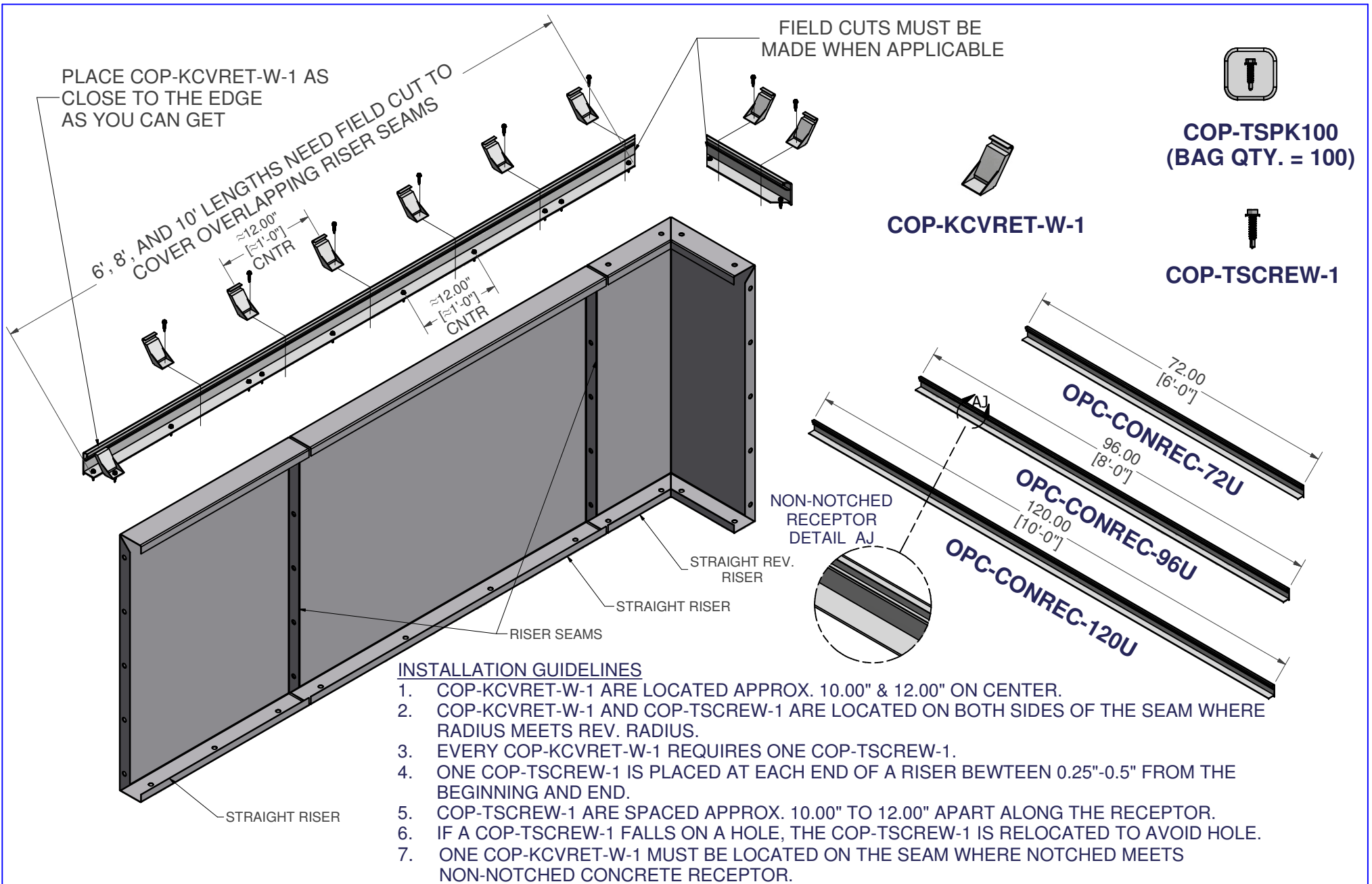
# BRACE, FLAT PLATE

<b>PART #:</b> ESC-9625-PT	<b>WEIGHT:</b> 3.52 lbmass	<b>MACHINE TIME:</b> N/A	<b>FILE/DIRECTORY:</b> C:\Vault\FTW\Design\CUSTOM STEPS\ESC-17000-17999\ESC-17295.idw
	<b>TOLERANCES EXCEPT AS NOTED</b> 0/0 0.0 0.00 0.000 0' ±1/8 ±0.25 ±0.0625 ±0.03125 ±1/2'	<b>MATERIAL:</b> 14 GA. GALVANIZED  <b>DRAWN BY:</b> VD	<b>DATE :</b> 7/26/2023  <b>SHEET :</b> 27 <b>OF</b> 30
<b>NOTES:</b>			



# BRACE, DRIVE STAKE CHANNEL SET

<b>PART #:</b> ESC-9625-DS  	<b>WEIGHT:</b> 2.03 lbmass	<b>MACHINE TIME:</b> N/A	<b>FILE/DIRECTORY:</b> C:\Vault\FTW\Design\CUSTOM STEPS\ESC-17000-17999\ESC-17295.idw
	TOLERANCES EXCEPT AS NOTED 0/0 0.0 0.00 0.000 0' ±1/8 ±0.25 ±0.0625 ±0.03125 ±1/2'	<b>MATERIAL:</b> 14 GA. GALVANIZED	<b>DATE :</b> 7/26/2023
<b>DRAWN BY:</b> VD	<b>SHEET :</b> 28 OF 30		



# NON-NOTCHED CONCRETE RECEPTOR FIELD INSTALLATION

<b>PART #:</b> STRAIGHT CONCRETE RECEPTOR 	<b>WEIGHT:</b> 77.51 lbmass	<b>MACHINE TIME:</b> N/A	<b>FILE/DIRECTORY:</b> C:\Vault\FTW\Design\CUSTOM STEPS\ESC-17000-17999\ESC-17295.idw
	<b>TOLERANCES EXCEPT AS NOTED</b> 0/0 0.0 0.00 0.000 0' ±1/8 ±0.25 ±0.0625 ±0.03125 ±1/2"	<b>MATERIAL:</b>	<b>DATE:</b> 7/26/2023
<b>DRAWN BY:</b> VD	<b>SHEET:</b> 29 OF 30		

PLACE COP-KCVRET-W-1 AT SEAMS WHERE STRAIGHT MEETS A RADIUS/REV. RADIUS.

PLACE COP-TSCREW-1 ON BOTH SIDES OF THE SEAMS.

PLACE COP-KCVRET-W-1 AS CLOSE TO THE END EDGE AS YOU CAN GET.

FIELD CUTS MUST BE MADE WHEN APPLICABLE

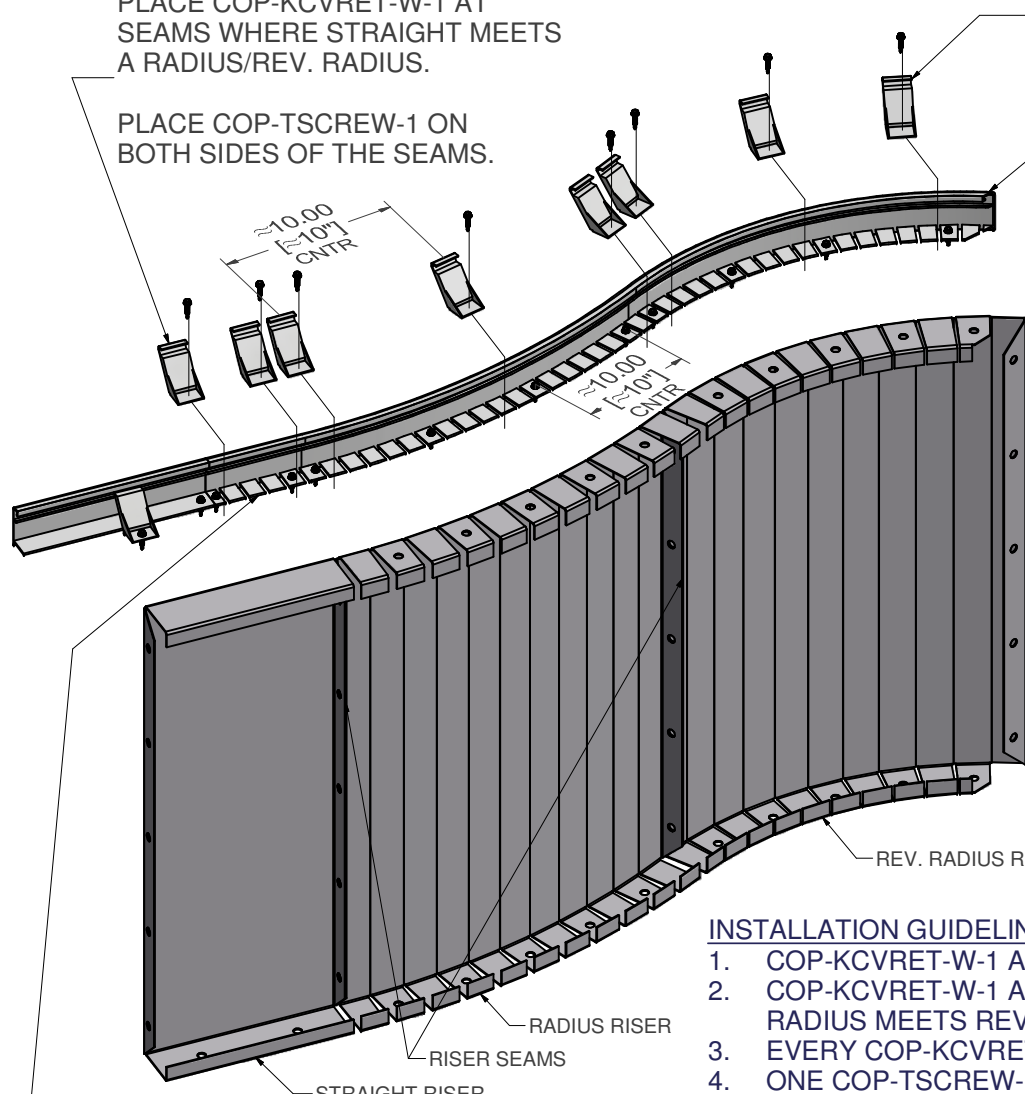


**COP-TSPK100**  
(BAG QTY. = 100)

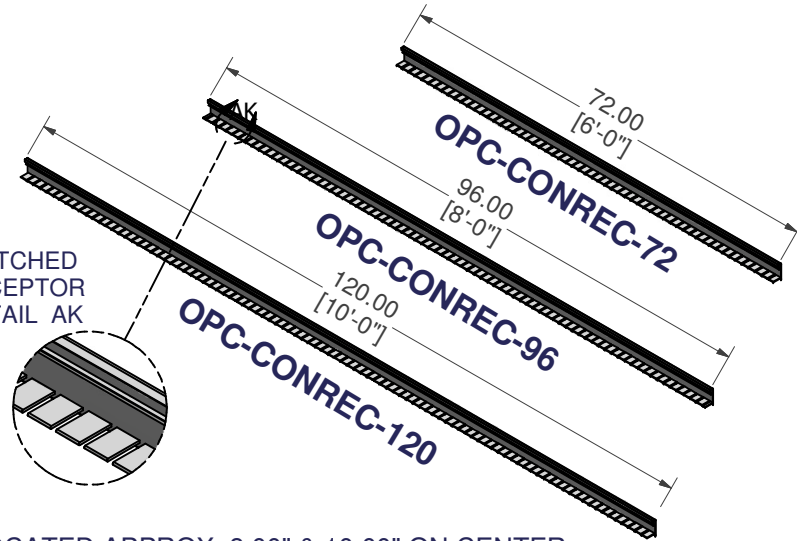
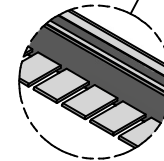


**COP-TSCREW-1**

**COP-KCVRET-W-1**



NOTCHED RECEPTOR DETAIL AK



ALLOW AN APPROX. OF 6.00" OF OVERLAP GOING FROM RADIUS/ REV. RADIUS TO A STRAIGHT RISER.

**INSTALLATION GUIDELINES**

1. COP-KCVRET-W-1 ARE LOCATED APPROX. 8.00" & 10.00" ON CENTER.
2. COP-KCVRET-W-1 AND COP-TSCREW-1 ARE LOCATED ON BOTH SIDES OF THE SEAM WHERE RADIUS MEETS REV. RADIUS.
3. EVERY COP-KCVRET-W-1 REQUIRES ONE COP-TSCREW-1.
4. ONE COP-TSCREW-1 IS PLACED AT EACH END OF A RISER BETWEEN 0.25"-0.5" FROM THE BEGINNING AND END.
5. COP-TSCREW-1 ARE SPACED APPROX. 8.00" TO 10.00" APART ALONG THE RECEPTOR.
6. IF A COP-TSCREW-1 FALLS ON A HOLE, THE COP-TSCREW-1 IS RELOCATED TO AVOID HOLE.
7. ONE COP-KCVRET-W-1 MUST BE LOCATED ON THE SEAM WHERE NOTCHED MEETS NON-NOTCHED CONCRETE RECEPTOR.

# NOTCHED CONCRETE RECEPTOR FIELD INSTALLATION

**PART #:** REV-RADIUS CONCRETE RECEPTOR

**WEIGHT:**  
52.49 lbmass

**MACHINE TIME:**  
N/A

**FILE/DIRECTORY:**

C:\Vault\FTW\Design\CUSTOM STEPS\ESC-17000-17999\ESC-17295.idw



TOLERANCES EXCEPT AS NOTED  
0/0 0.0 0.00 0.000 0'  
±1/8 ±0.25 ±0.0625 ±0.03125 ±1/2"

**MATERIAL:**

**DATE:** 7/26/2023

**NOTES:**

**DRAWN BY:** VD

**SHEET:** 30 OF 30