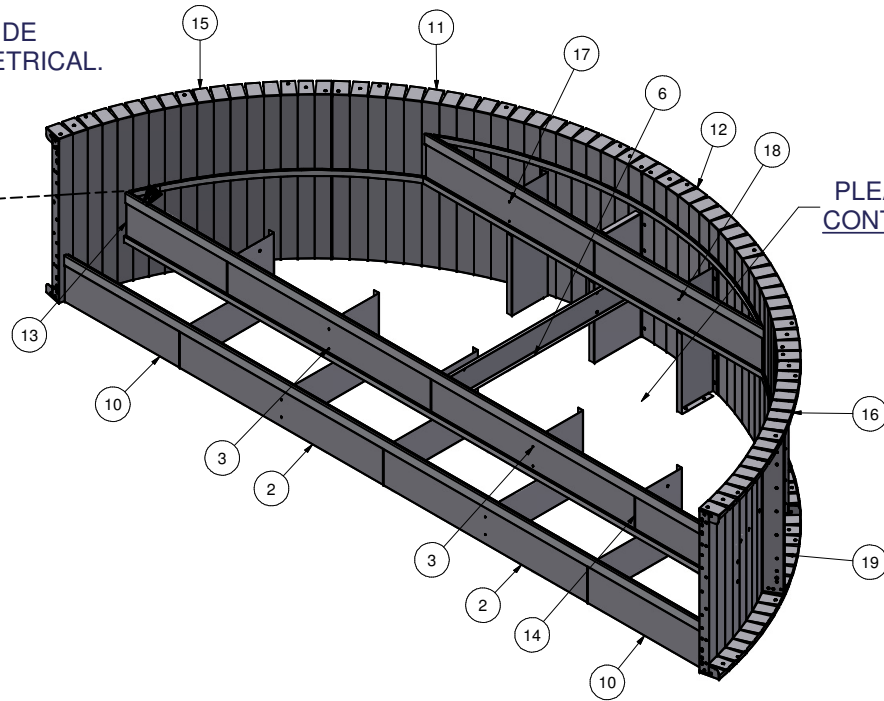
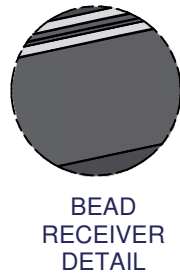
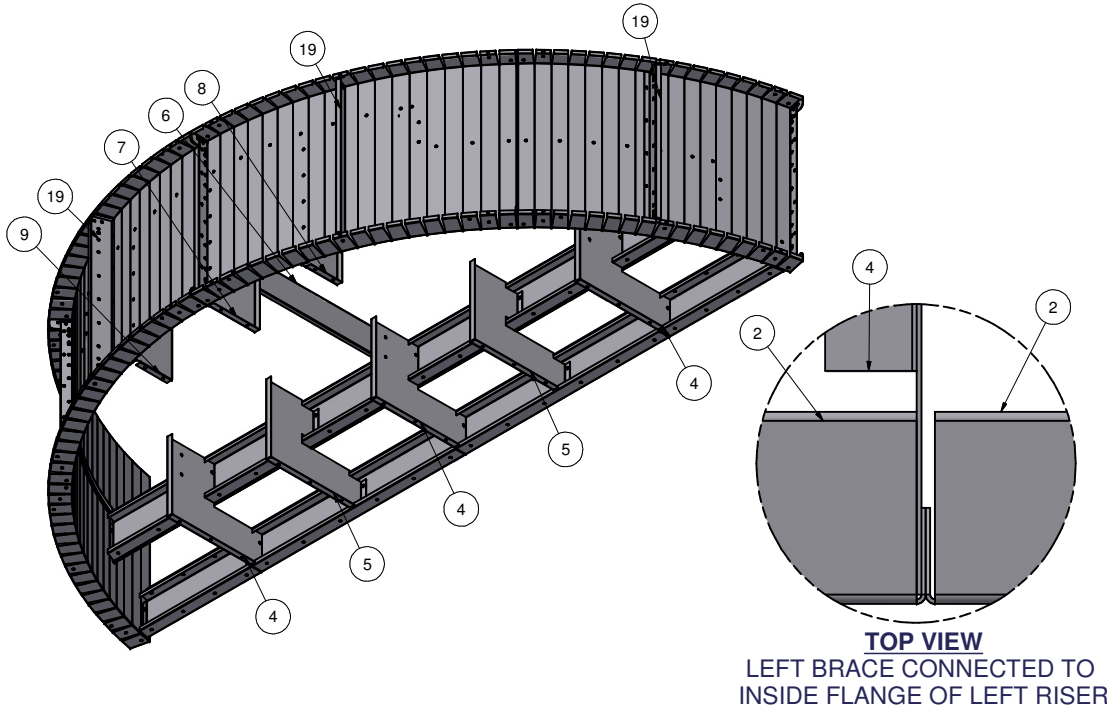


Parts List			
ITEM	QTY	PART NUMBER	DESCRIPTION
1	48	COP-KCVRET-W-1	COP COPING STIFFNER 1 5/8"-1PC
2	2	ESC-7053-BR	STRAIGHT, BOTTOM RISER
3	2	ESC-17086-MR	STRAIGHT, MIDDLE RISER
4	3	ESC-17110-B	BRACE, 2-RISER SUPPORT
5	2	ESC-17282-CSB	BRACE, 2-RISER SUPPORT
6	1	ESC-17348-CB	BRACE, CENTER SUPPORT
7	1	ESC-17348-TRS	BRACE, TOP RISER SUPPORT
8	1	ESC-17348-TRSL	BRACE, TOP RISER SUPPORT, LEFT
9	1	ESC-17348-TRSR	BRACE, TOP RISER SUPPORT, RIGHT
10	2	ESC-17406-BRE	STRAIGHT, BOTTOM RISER, END
11	1	ESC-17406-BWL	RADIUS, BACK WALL, LEFT
12	1	ESC-17406-BWR	RADIUS, BACK WALL, RIGHT
13	1	ESC-17406-MRL	STRAIGHT, MIDDLE RISER, LEFT
14	1	ESC-17406-MRR	STRAIGHT, MIDDLE RISER, RIGHT
15	1	ESC-17406-SWL	RADIUS, SIDE WALL, LEFT
16	1	ESC-17406-SWR	RADIUS, SIDE WALL, RIGHT
17	1	ESC-17406-TRL	STRAIGHT, TOP RISER, LEFT
18	1	ESC-17406-TRR	STRAIGHT, TOP RISER, RIGHT
19	4	M0065-1	PANEL Z-RIB W/BUTTRESS HOLES
20	0'	OPC-CONREC-XX	NOTCHED CONCRETE RECEPTOR
21	39'	OPC-CONREC-XXU	UN-NOTCHED CONCRETE RECEPTOR
22	43'	SSC-1099-PFT	STEEL STEP PVC BEAD RETAINER (PER FT)

NOTE:
RIGHT AND LEFT SIDE
PARTS ARE SYMMETRICAL.



PLEASE REFER TO
CONTRACTOR NOTE



CONTRACTOR NOTE:
BACK FILL STEP/ SUNLEDGE AREA WITH COMPACTED
EARTH MATERIAL. FINISH STEP/ SUNLEDGE AREA WITH 2"
OF HARDEN FLOOR MATERIAL TO MATCH REQUIRED
DEPTH (FLUSH WITH TOP OF BEAD RECEIVER).

CONTRACTOR NOTE:
CONTRACTOR IS RESPONSIBLE FOR SECURING ALL
RISERS INTO PLACE WITH REBAR HOLES BEFORE
BACKFILLING THIS CUSTOM STEP

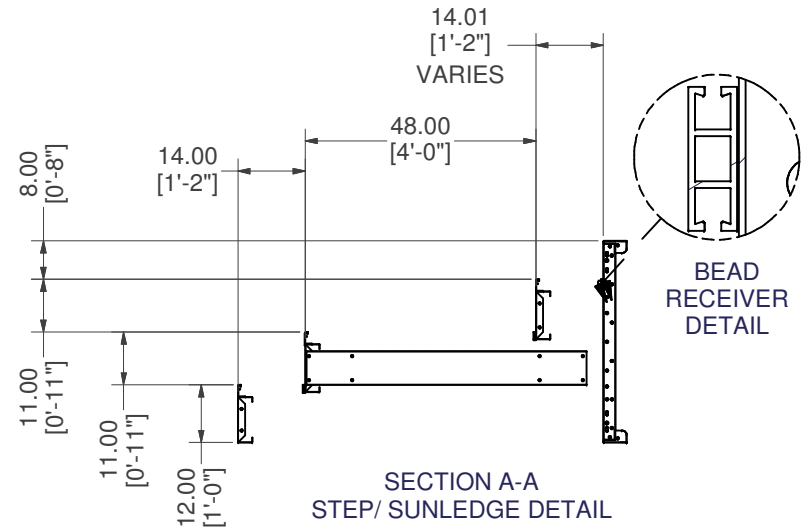
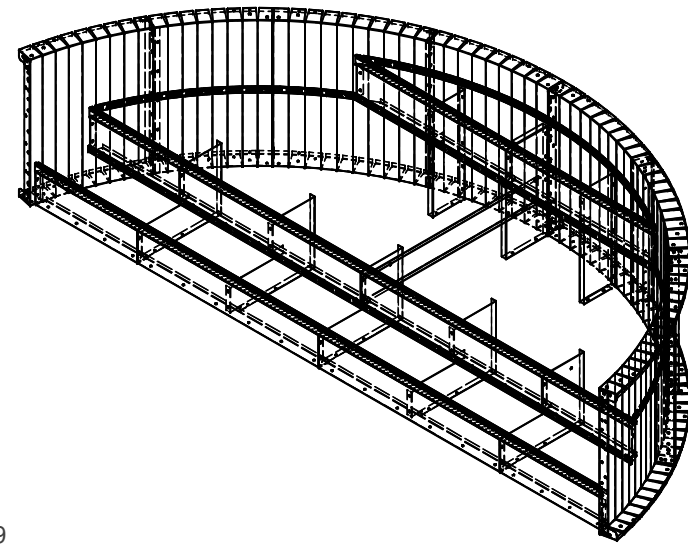
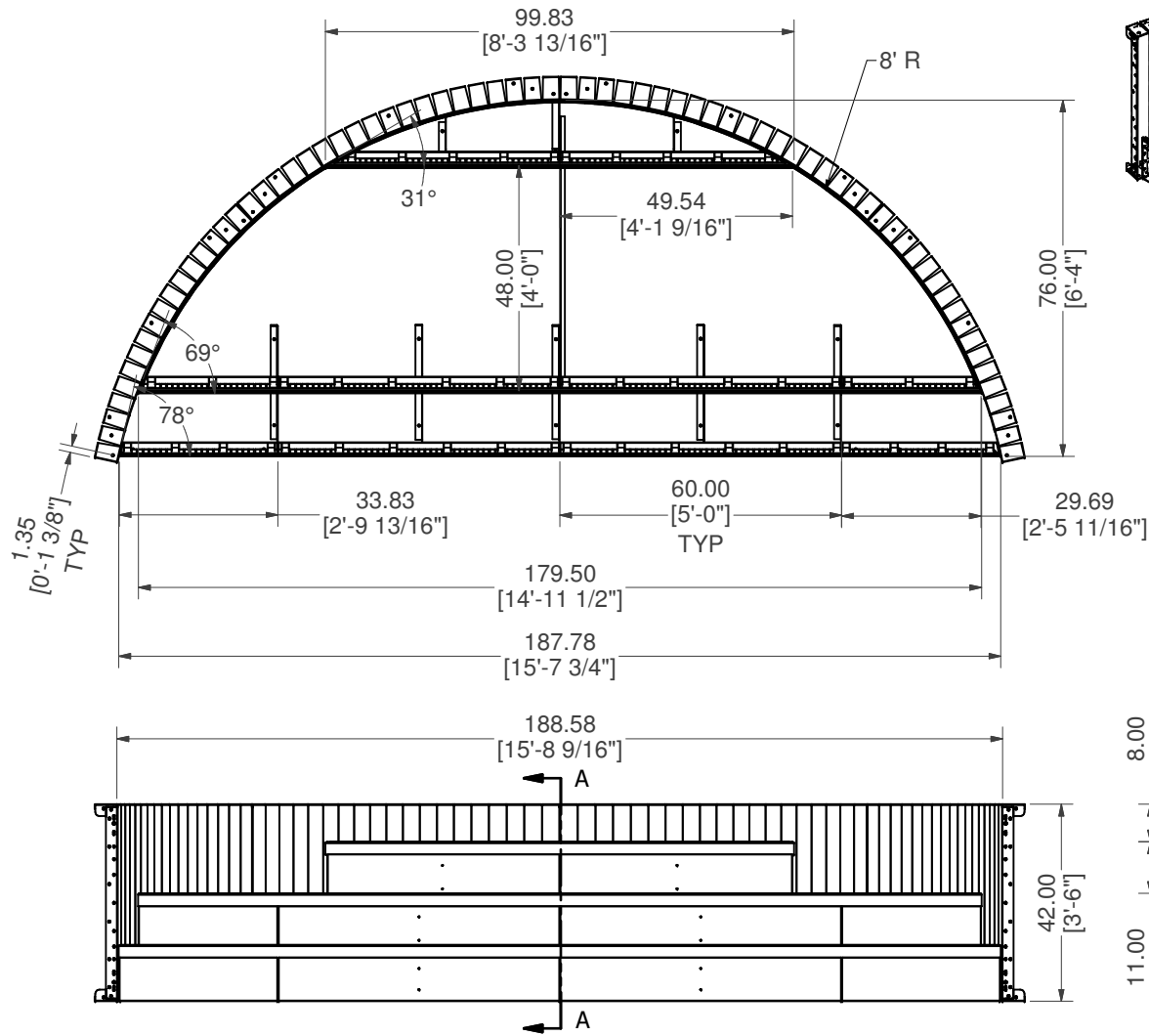
KEEP BEAD RECEIVER ATTACHED TO THE RISERS AND
WALL PANELS FOR SHIPPING. A TOTAL OF 516" (43')
OF BEAD RECEIVER IS REQUIRED.

CONTRACTOR MUST FIELD FIT ALL CONCRETE RECEPTOR.
TOTALS REQUIRED FOR THIS CUSTOM PRODUCT APPLICATION.
OPC-CONREC-XX (NOTCHED) = 0" (0')
OPC-CONREC-XXU (UN-NOTCHED) = 468" (39')
COP-KCVRET-W-1 (STIFFENER) = 48


15'-7 3/4" X 6'-4" X 8'R OPEN TOP STEP W/ 4' MIDDLE TREAD

PART #: ESC-17406 	WEIGHT: 588.01 lbmass	MACHINE TIME: N/A	FILE/DIRECTORY: C:\Vault\FTW\Design\CUSTOM STEPS\ESC-17000-17999\ESC-17406.idw
	TOLERANCES EXCEPT AS NOTED 0/0 0.0 0.00 0.000 0' ±1/8 ±0.25 ±0.0625 ±0.03125 ±1/2'	MATERIAL: DRAWN BY: AK	DATE: 8/10/2023 SHEET: 1 OF 16

NOTE:
RIGHT AND LEFT SIDE
PARTS ARE SYMMETRICAL.

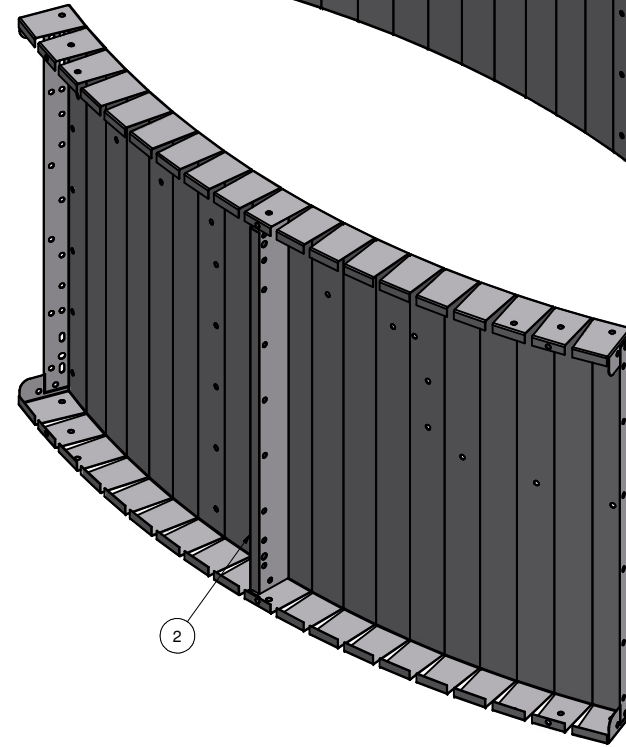
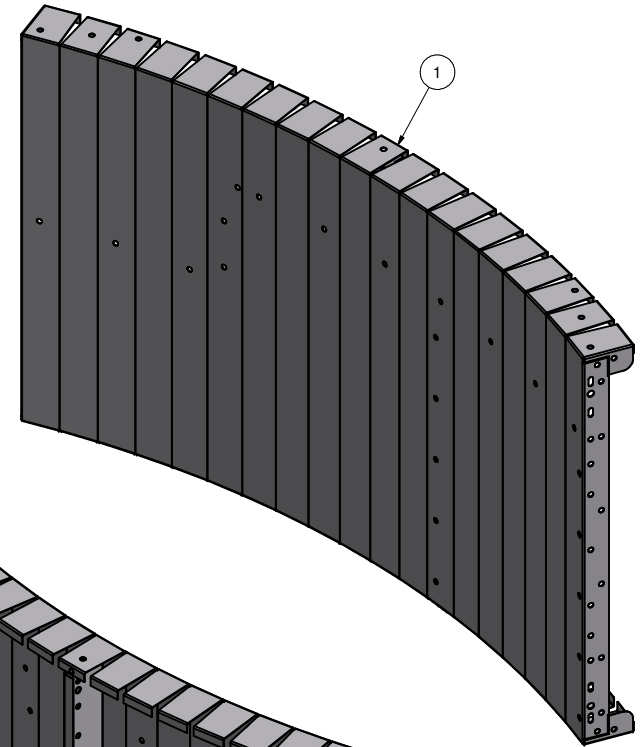
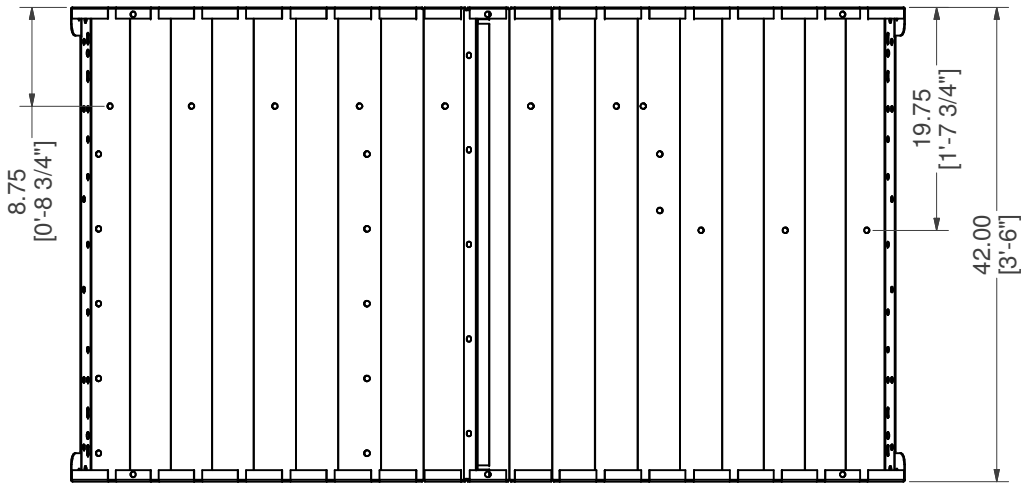
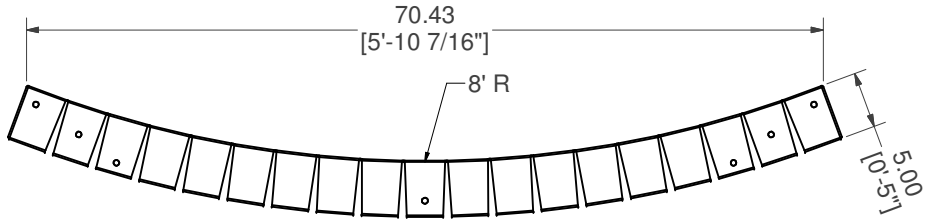


15'-7 3/4" X 6'-4" X 8'R OPEN TOP STEP W/ 4' MIDDLE TREAD

PART #: ESC-17406	WEIGHT: 588.01 lbmass	MACHINE TIME: N/A	FILE/DIRECTORY: C:\Vault\FTW\Design\CUSTOM STEPS\ESC-17000-17999\ESC-17406.idw
	TOLERANCES EXCEPT AS NOTED	MATERIAL:	DATE: 8/10/2023
	0/0 0.0 0.00 0.000 0'	DRAWN BY: AK	NOTES:
	±1/8 ±0.25 ±0.0625 ±0.03125 ±1/2'		SHEET: 2 OF 16

Parts List			
ITEM	QTY	PART NUMBER	DESCRIPTION
1	1	ESC-17406-BWL	RADIUS, BACK WALL, LEFT
2	1	M0065-1	PANEL Z-RIB W/BUTTRESS HOLES

WELDCODE #9



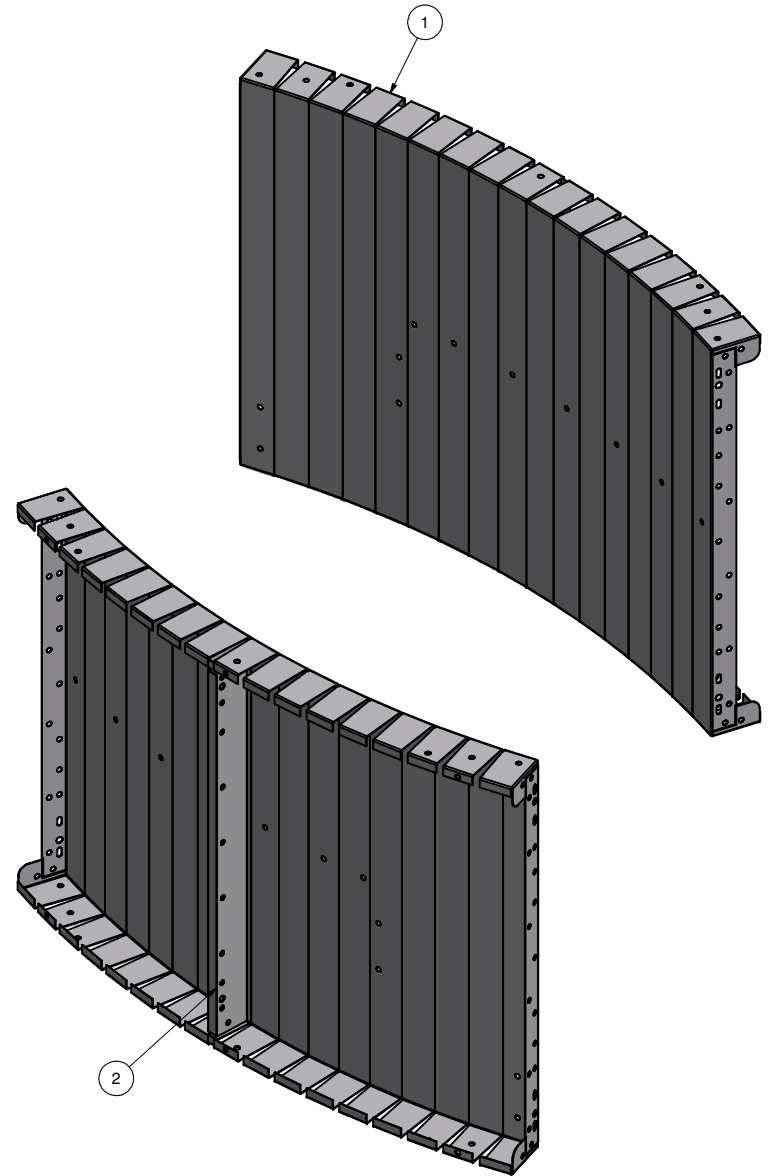
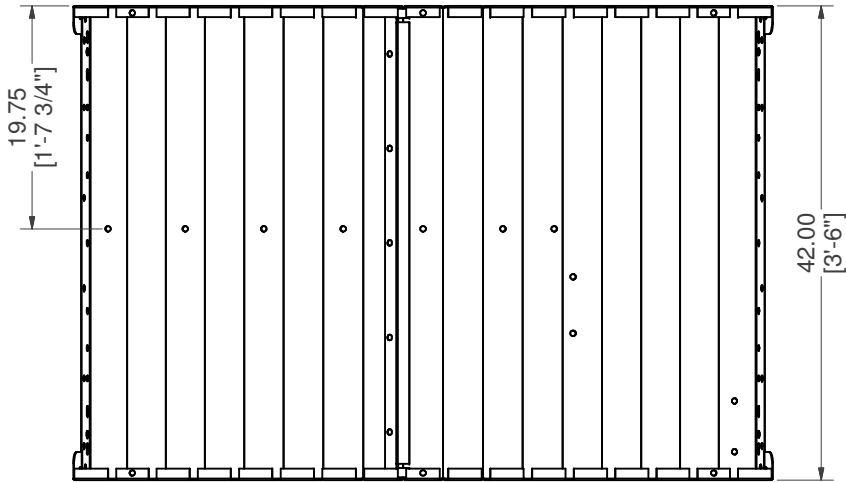
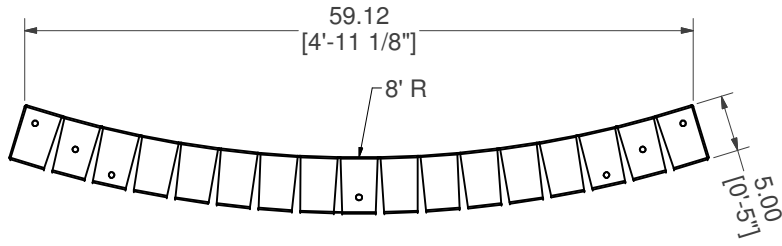
NOTE:
RIGHT SIDE PART IS SYMMETRICAL TO LEFT SIDE PART SHOWN.

RADIUS, BACK WALL, LEFT W/Z-RIB

	PART #: ESC-17406-BWL	WEIGHT: 85.91 lbmass	MACHINE TIME: N/A	FILE/DIRECTORY: C:\Vault\FTW\Design\CUSTOM STEPS\ESC-17000-17999\ESC-17406.idw
	TOLERANCES EXCEPT AS NOTED 0/0 0.0 0.00 0.000 0' ±1/8 ±0.25 ±0.0625 ±0.03125 ±1/2'	MATERIAL:	DATE: 8/10/2023	NOTES: WELDCODE #9 LOCATE 37" FROM LEADING EDGE
	DRAWN BY: AK	SHEET: 3 OF 16		

Parts List			
ITEM	QTY	PART NUMBER	DESCRIPTION
1	1	ESC-17406-SWL	RADIUS, SIDE WALL, LEFT
2	1	M0065-1	PANEL Z-RIB W/BUTTRESS HOLES

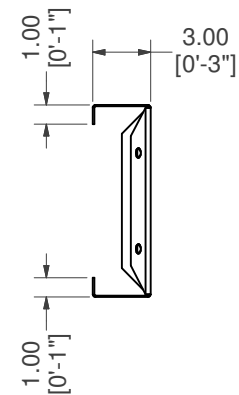
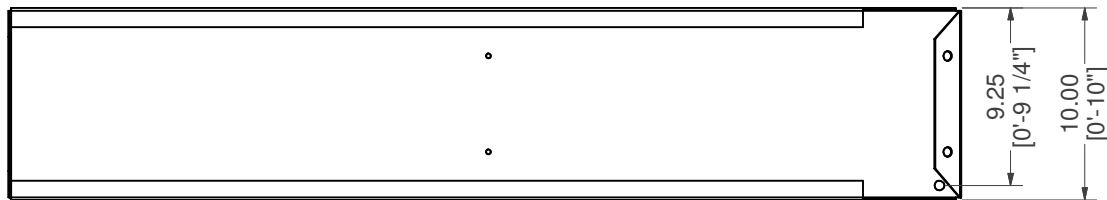
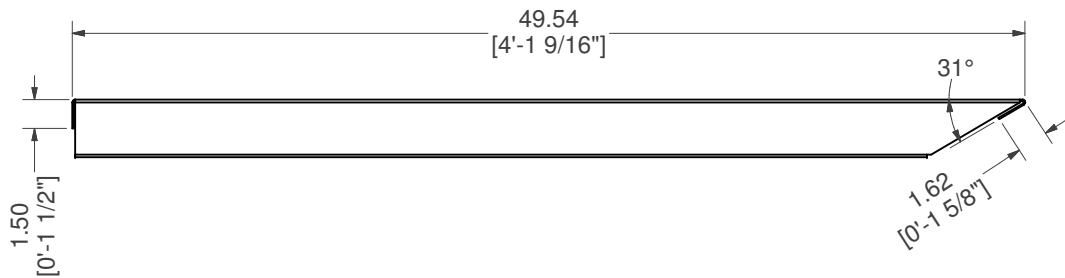
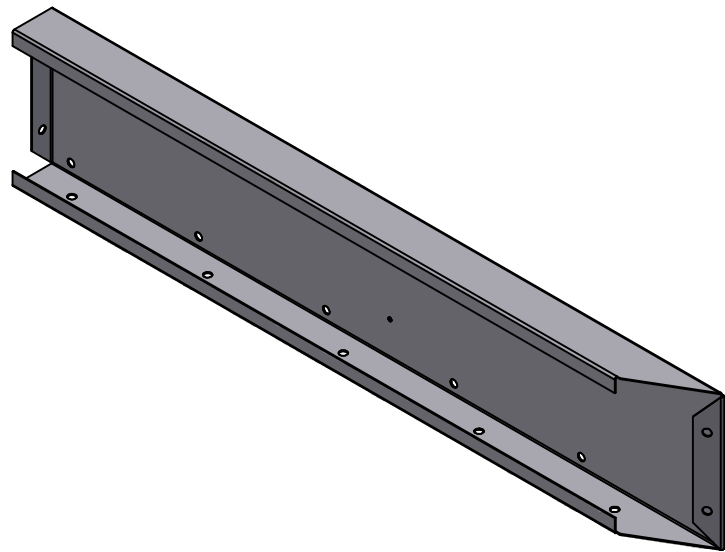
WELDCODE #8



NOTE:
RIGHT SIDE PART IS SYMMETRICAL TO LEFT SIDE PART SHOWN.


RADIUS, SIDE WALL, LEFT W/Z-RIB

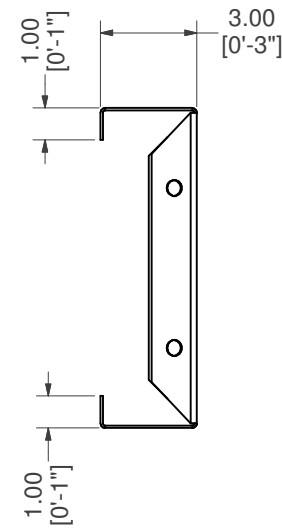
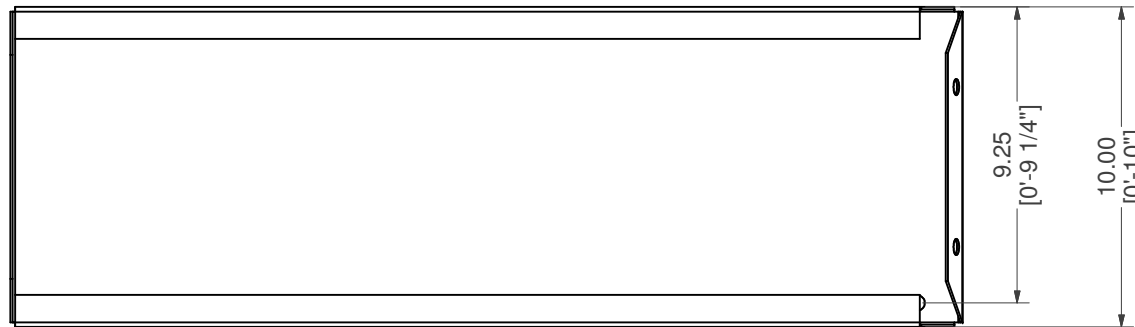
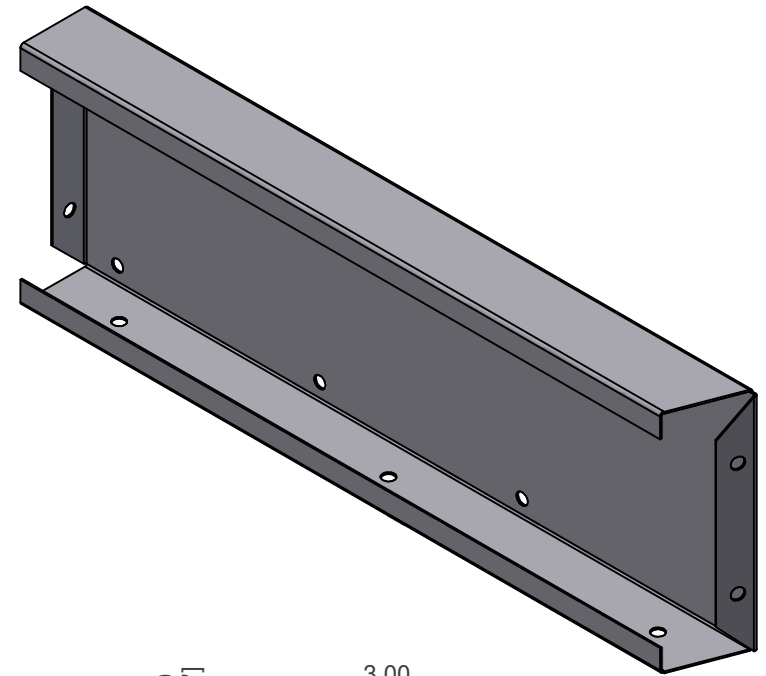
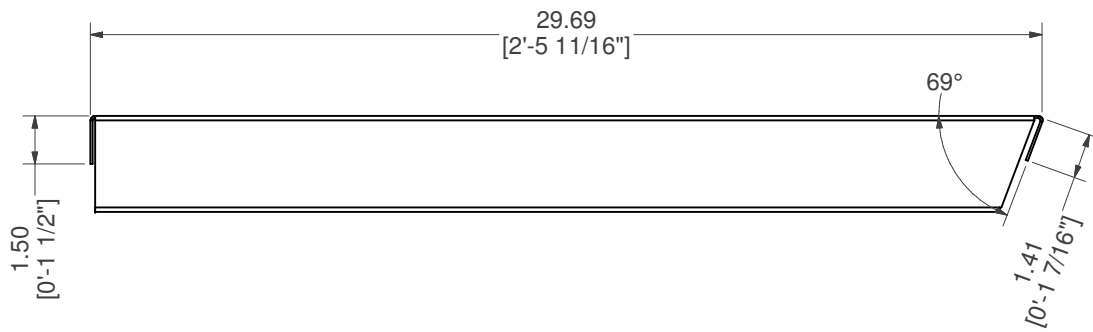
PART #: ESC-17406-SWL 	WEIGHT: 73.10 lbmass	MACHINE TIME: N/A	FILE/DIRECTORY: C:\Vault\FTW\Design\CUSTOM STEPS\ESC-17000-17999\ESC-17406.idw
	TOLERANCES EXCEPT AS NOTED 0/0 0.0 0.00 0.000 0' ±1/8 ±0.25 ±0.0625 ±0.03125 ±1/2'	MATERIAL: DRAWN BY: AK	DATE : 8/10/2023 SHEET : 4 OF 16



NOTE:
RIGHT SIDE PART IS SYMMETRICAL TO LEFT SIDE PART SHOWN.

STRAIGHT, TOP RISER, LEFT

PART #: ESC-17406-TRL	WEIGHT: 17.59 lbmass	MACHINE TIME: N/A	FILE/DIRECTORY: C:\Vault\FTW\Design\CUSTOM STEPS\ESC-17000-17999\ESC-17406.idw	
	TOLERANCES EXCEPT AS NOTED 0/0 0.0 0.00 0.000 0' ±1/8 ±0.25 ±0.0625 ±0.03125 ±1/2'	MATERIAL: 14 GA. GALVANIZED	DATE : 8/10/2023	NOTES:
		DRAWN BY: AK	SHEET : 5 OF 16	



NOTE:
RIGHT SIDE PART IS SYMMETRICAL TO LEFT SIDE PART SHOWN.

STRAIGHT, MIDDLE RISER, LEFT

PART #: ESC-17406-MRL

WEIGHT:
10.85 lbmass

MACHINE TIME:
N/A

FILE/DIRECTORY:

C:\Vault\FTW\Design\CUSTOM STEPS\ESC-17000-17999\ESC-17406.idw

latham
The Pool Company

TOLERANCES EXCEPT
AS NOTED

0/0 0.0 0.00 0.000 0'
±1/8 ±0.25 ±0.0625 ±0.03125 ±1/2'

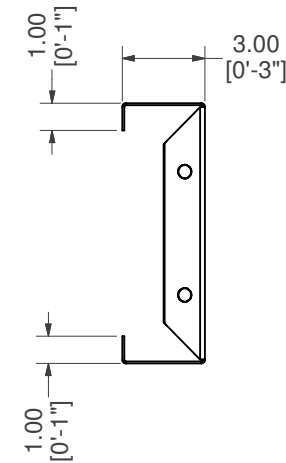
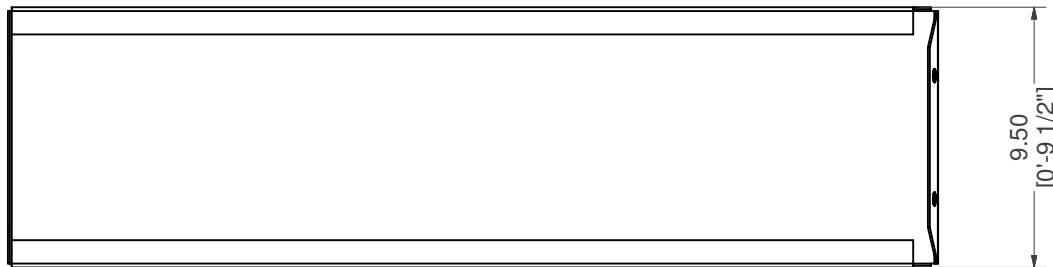
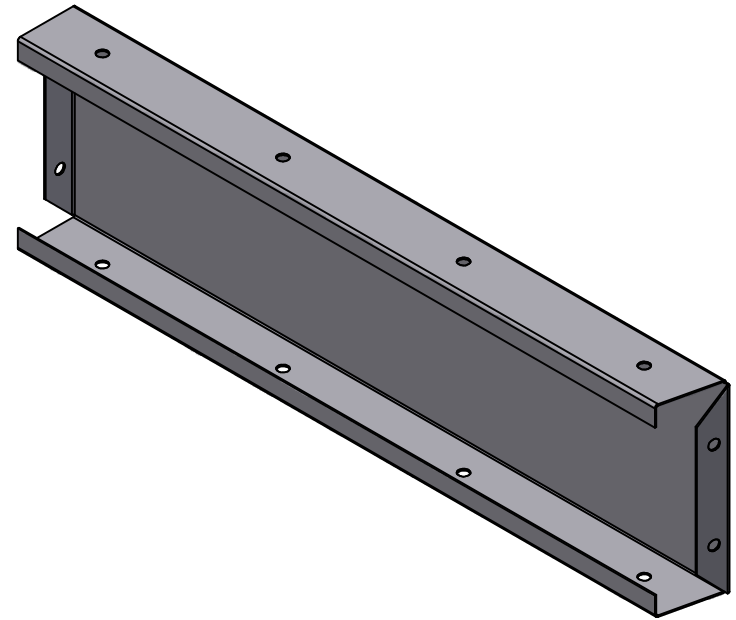
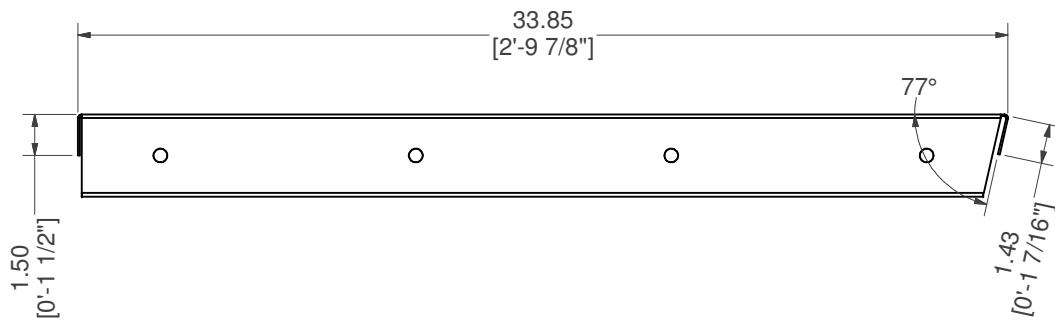
MATERIAL:
14 GA. GALVANIZED

DRAWN BY:
AK

DATE : 8/10/2023

SHEET : 6 OF 16

NOTES:



STRAIGHT, BOTTOM RISER, END

PART #: ESC-17406-BRE

WEIGHT:
11.99 lbmass

MACHINE TIME:
N/A

FILE/DIRECTORY:
C:\Vault\FTW\Design\CUSTOM STEPS\ESC-17000-17999\ESC-17406.idw

latham
The Pool Company

TOLERANCES EXCEPT
AS NOTED
0/0 0.0 0.00 0.000 0'
±1/8 ±0.25 ±0.0625 ±0.03125 ±1/2'

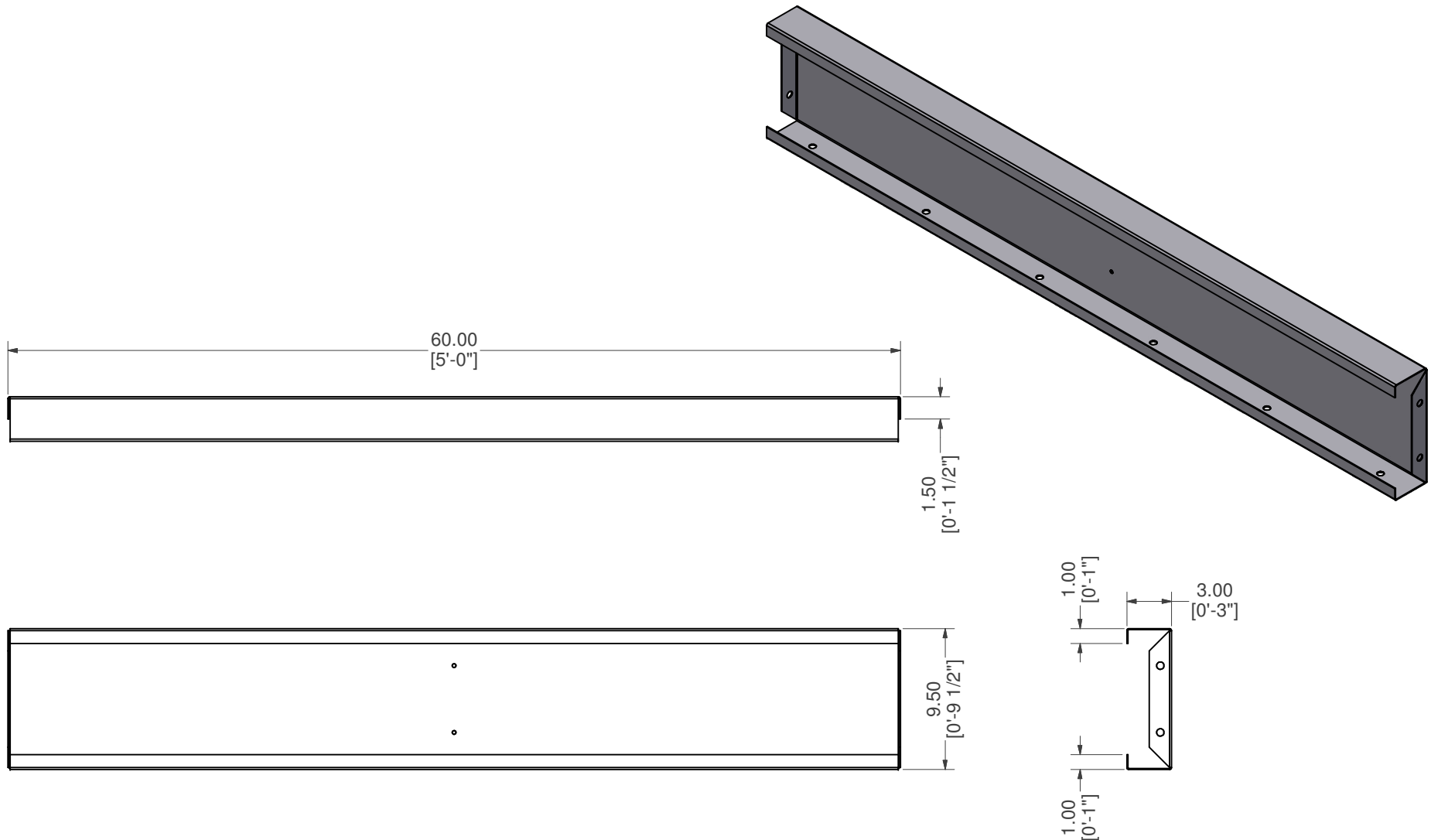
MATERIAL:
14 GA. GALVANIZED

DATE: 8/10/2023


NOTES:

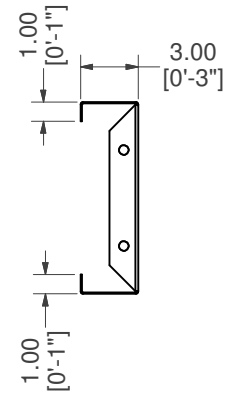
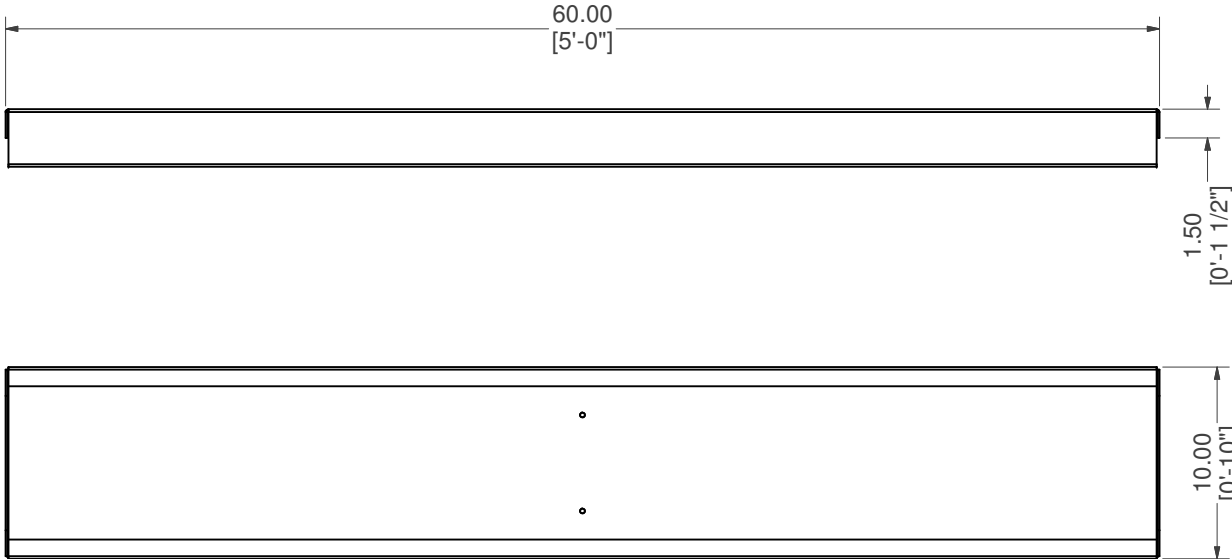
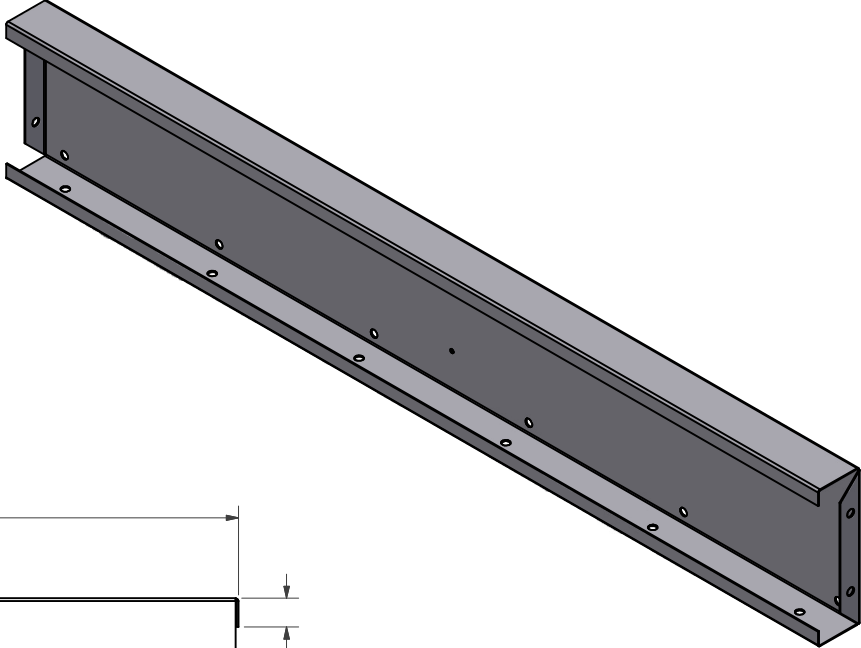
DRAWN BY: AK

SHEET: 7 OF 16




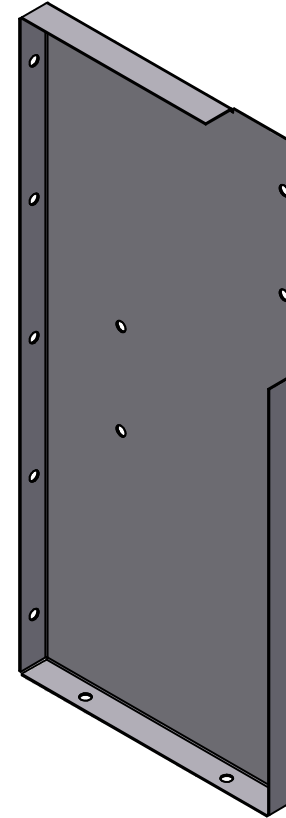
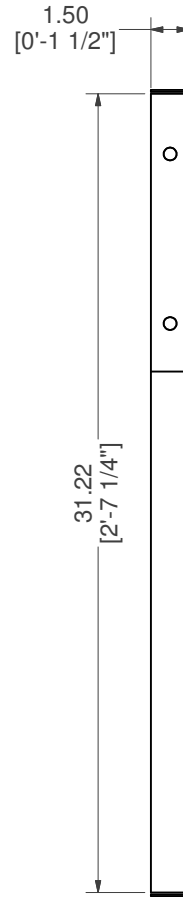
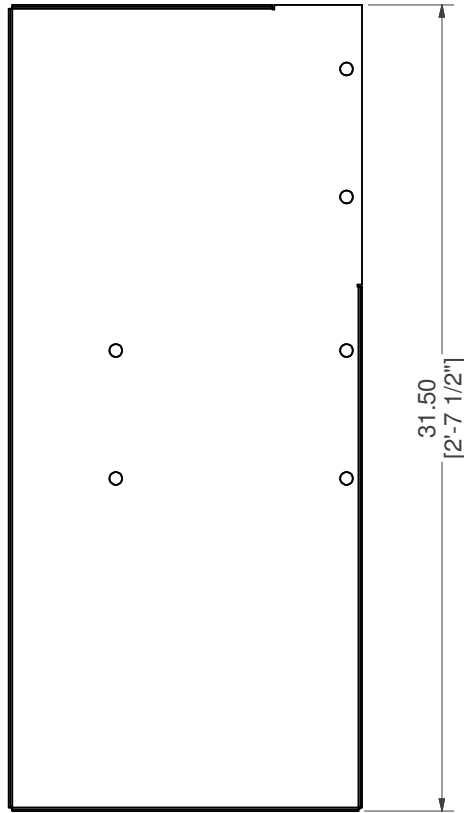
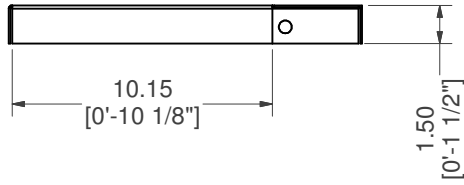
STRAIGHT, BOTTOM RISER

PART #: ESC-7053-BR	WEIGHT: 21.13 lbmass	MACHINE TIME: N/A	FILE/DIRECTORY: C:\Vault\FTW\Design\CUSTOM STEPS\ESC-17000-17999\ESC-17406.idw
	TOLERANCES EXCEPT AS NOTED 0/0 0.0 0.00 0.000 0' ±1/8 ±0.25 ±0.0625 ±0.03125 ±1/2'	MATERIAL: 14 GA. GALVANIZED DRAWN BY: AK	DATE : 8/10/2023 SHEET : 8 OF 16 NOTES:




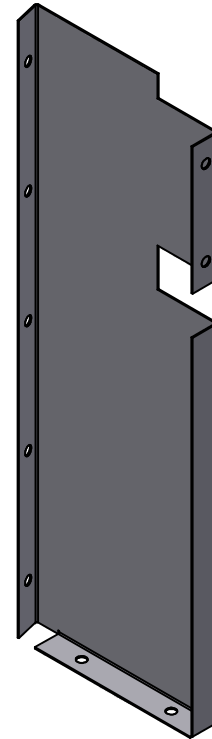
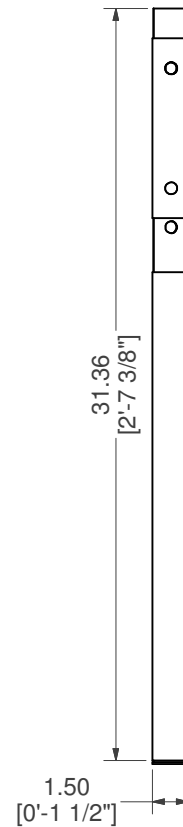
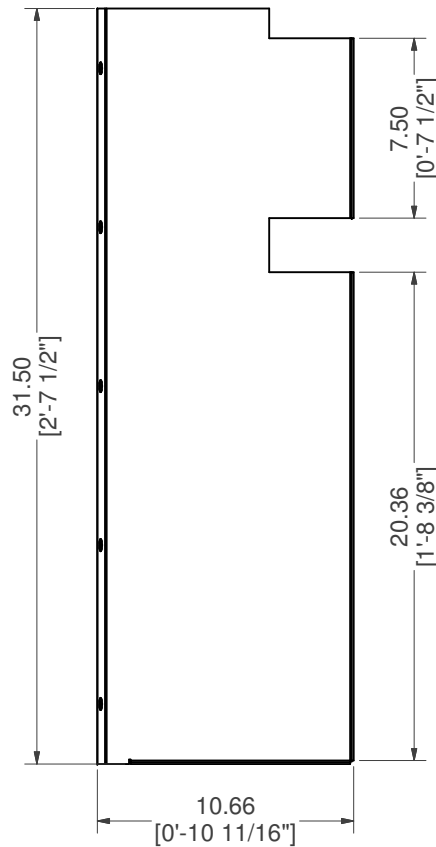
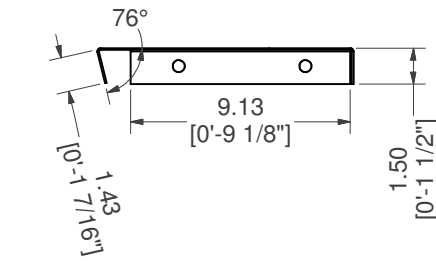
STRAIGHT, MIDDLE RISER

PART #: ESC-17086-MR	WEIGHT: 21.74 lbmass	MACHINE TIME: N/A	FILE/DIRECTORY: C:\Vault\FTW\Design\CUSTOM STEPS\ESC-17000-17999\ESC-17406.idw	
	TOLERANCES EXCEPT AS NOTED 0/0 0.0 0.00 0.000 0' ±1/8 ±0.25 ±0.0625 ±0.03125 ±1/2'	MATERIAL: 14 GA. GALVANIZED	DATE : 8/10/2023	NOTES:
		DRAWN BY: AK	SHEET : 9 OF 16	




BRACE, TOP RISER SUPPORT

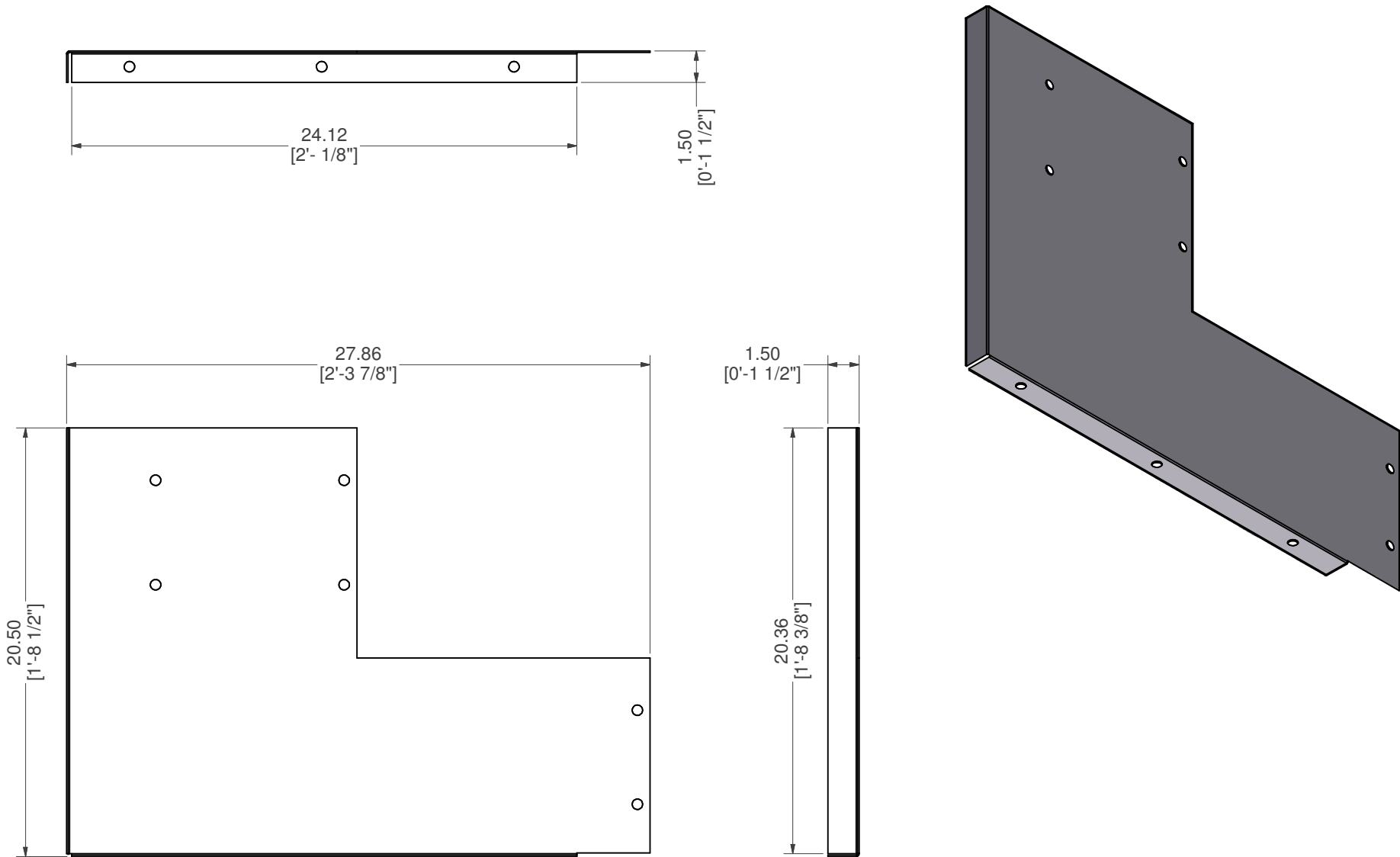
PART #: ESC-17348-TRS 	WEIGHT: 10.89 lbmass	MACHINE TIME: N/A	FILE/DIRECTORY: C:\Vault\FTW\Design\CUSTOM STEPS\ESC-17000-17999\ESC-17406.idw
	TOLERANCES EXCEPT AS NOTED 0/0 0.0 0.00 0.000 0' ±1/8 ±0.25 ±0.0625 ±0.03125 ±1/2'	MATERIAL: 14 GA. GALVANIZED	DATE : 8/10/2023
DRAWN BY: AK	SHEET : 10 OF 16		




NOTE:
RIGHT SIDE PART IS SYMMETRICAL TO LEFT SIDE PART SHOWN.

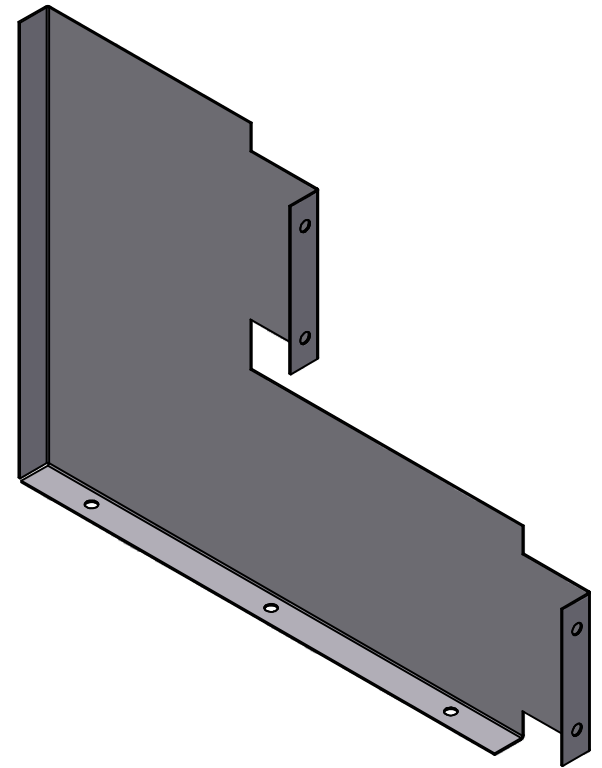
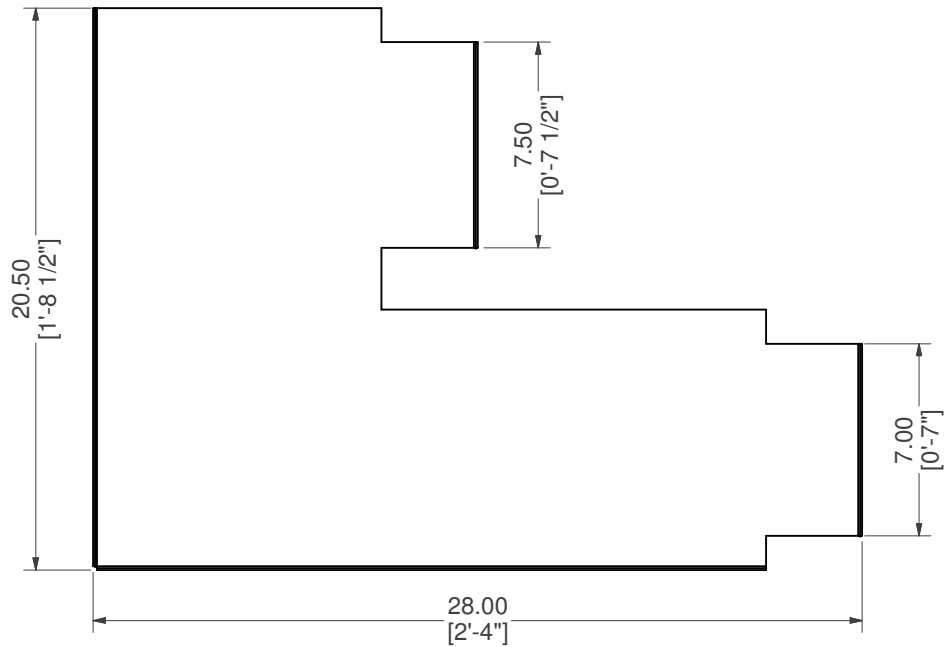
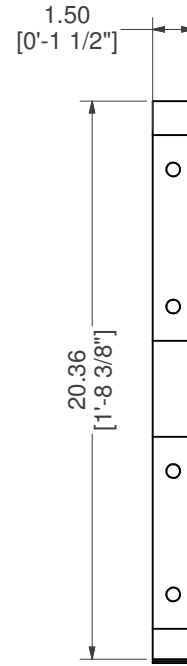
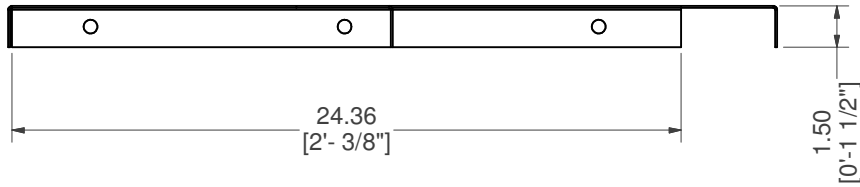
BRACE, TOP RISER SUPPORT, LEFT

PART #: ESC-17348-TRSL 	WEIGHT: 8.46 lbmass	MACHINE TIME: N/A	FILE/DIRECTORY: C:\Vault\FTW\Design\CUSTOM STEPS\ESC-17000-17999\ESC-17406.idw
	TOLERANCES EXCEPT AS NOTED 0/0 0.0 0.00 0.000 0' ±1/8 ±0.25 ±0.0625 ±0.03125 ±1/2'	MATERIAL: 14 GA. GALVANIZED	DATE : 8/10/2023
DRAWN BY: AK	SHEET : 11 OF 16		




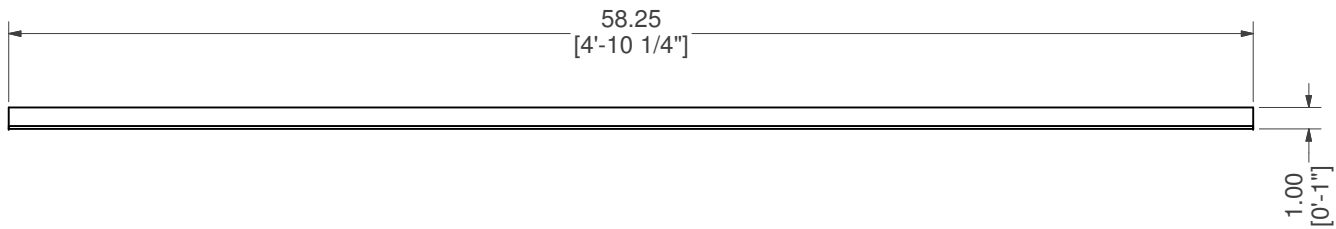
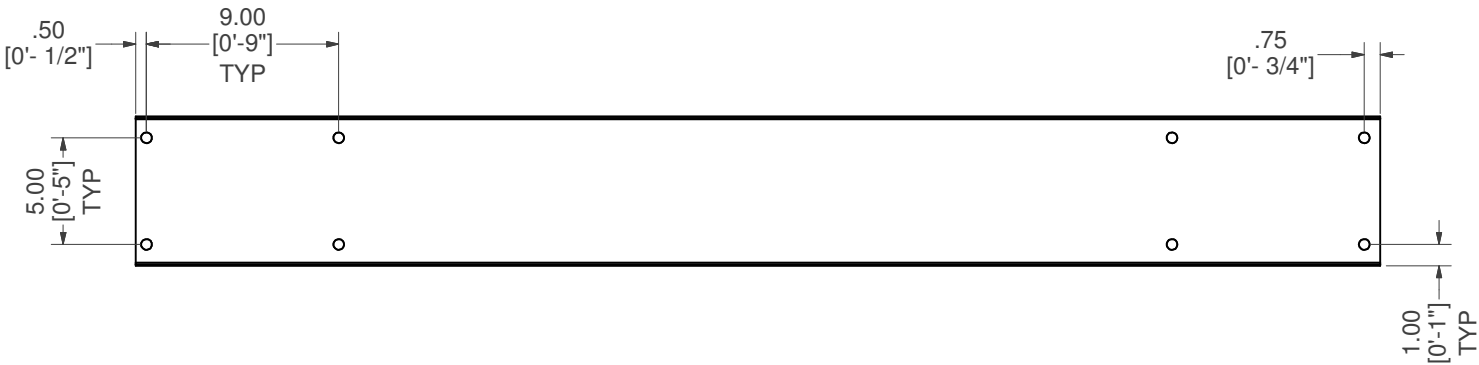
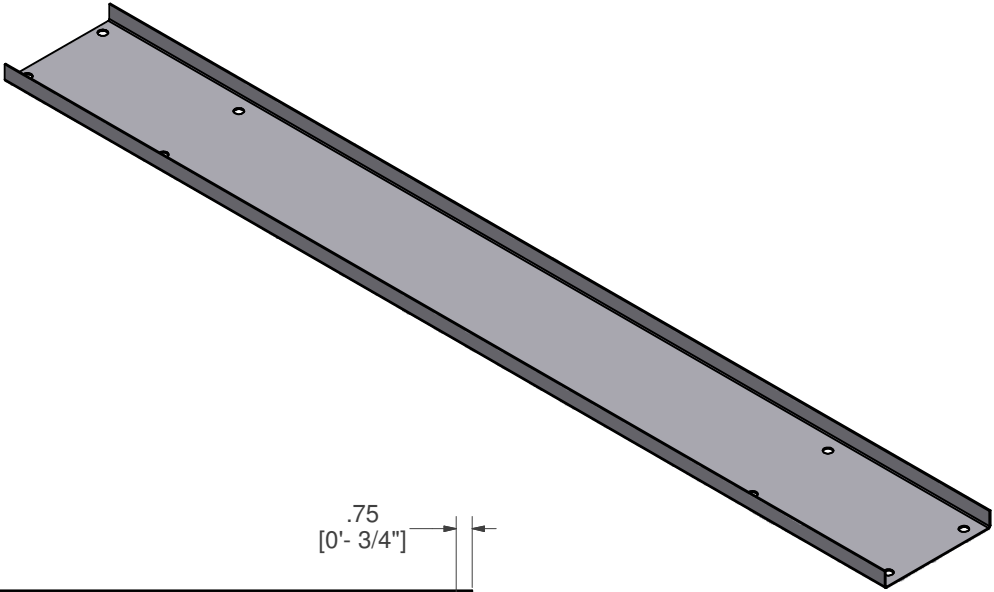
BRACE, 2-RISER SUPPORT

PART #: ESC-17110-B 	WEIGHT: 9.68 lbmass	MACHINE TIME: N/A	FILE/DIRECTORY: C:\Vault\FTW\Design\CUSTOM STEPS\ESC-17000-17999\ESC-17406.idw
	TOLERANCES EXCEPT AS NOTED 0/0 0.0 0.00 0.000 0' ±1/8 ±0.25 ±0.0625 ±0.03125 ±1/2'	MATERIAL: 14 GA. GALVANIZED	DATE : 8/10/2023
DRAWN BY: AK	SHEET : 12 OF 16		




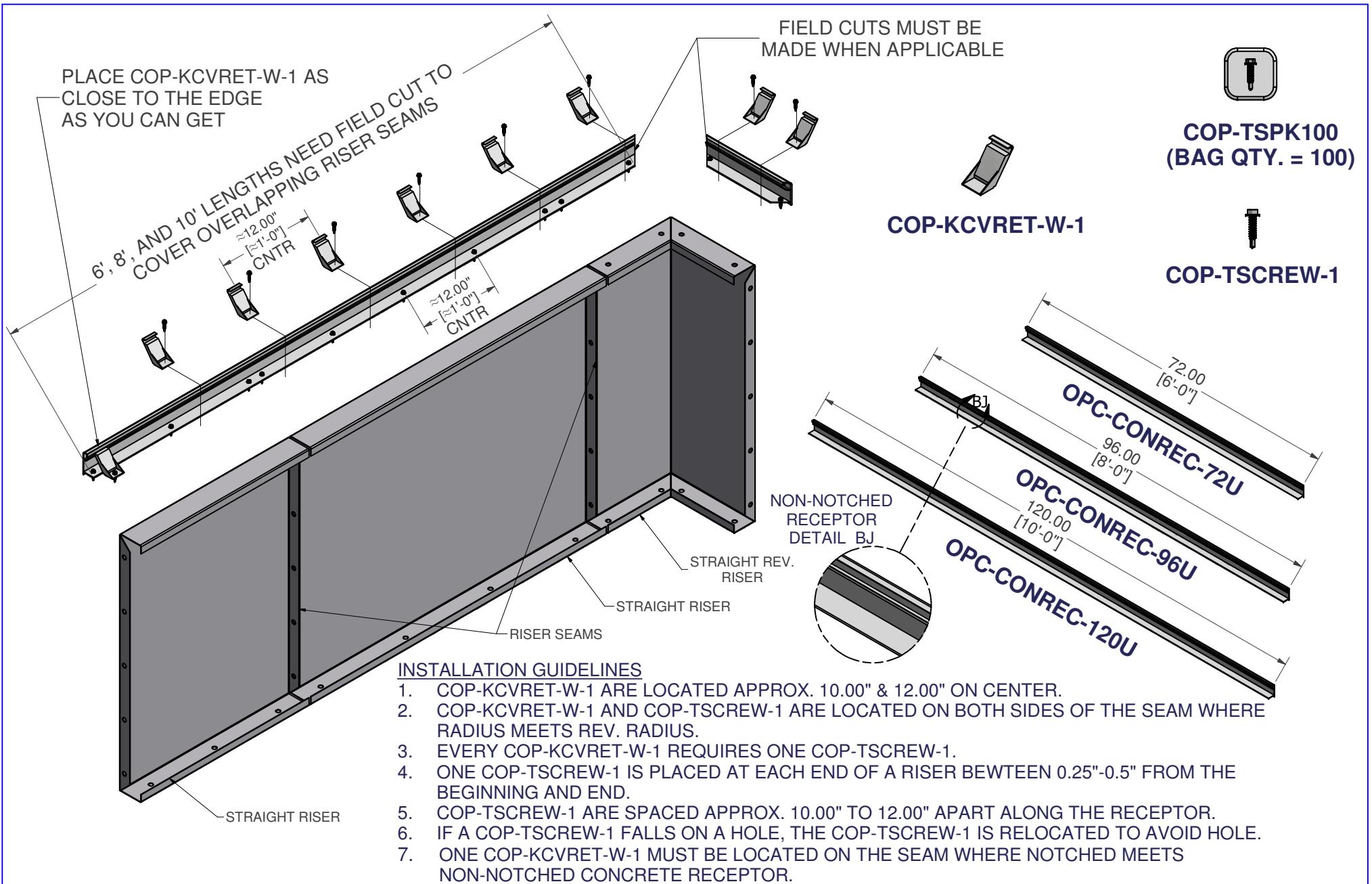
BRACE, 2-RISER SUPPORT

PART #: ESC-17282-CSB 	WEIGHT: 9.74 lbmass	MACHINE TIME: N/A	FILE/DIRECTORY: C:\Vault\FTW\Design\CUSTOM STEPS\ESC-17000-17999\ESC-17406.idw
	TOLERANCES EXCEPT AS NOTED 0/0 0.0 0.00 0.000 0' ±1/8 ±0.25 ±0.0625 ±0.03125 ±1/2'	MATERIAL: 14 GA. GALVANIZED	DATE : 8/10/2023
DRAWN BY: AK	SHEET : 13 OF 16		




BRACE, CENTER SUPPORT

PART #: ESC-17348-CB	WEIGHT: 10.35 lbmass	MACHINE TIME: N/A	FILE/DIRECTORY: C:\Vault\FTW\Design\CUSTOM STEPS\ESC-17000-17999\ESC-17406.idw
	TOLERANCES EXCEPT AS NOTED 0/0 0.0 0.00 0.000 0' ±1/8 ±0.25 ±0.0625 ±0.03125 ±1/2'	MATERIAL: 14 GA. GALVANIZED DRAWN BY: AK	DATE : 8/10/2023 NOTES: SHEET : 14 OF 16



NON-NOTCHED CONCRETE RECEPTOR FIELD INSTALLATION

PART # STRAIGHT CONCRETE RECEPTOR	WEIGHT: 77.51 lbmass	MACHINE TIME: N/A	FILE/DIRECTORY: C:\Vault\FTW\Design\CUSTOM STEPS\ESC-17000-17999\ESC-17406.idw
	TOLERANCES EXCEPT AS NOTED 0/0 0.0 0.00 0.000 0'	MATERIAL:	DATE : 8/10/2023
	±1/8 ±0.25 ±0.0625 ±0.03125 ±1/2'	DRAWN BY: AK	NOTES: SHEET : 15 OF 16

PLACE COP-KCVRET-W-1 AT SEAMS WHERE STRAIGHT MEETS A RADIUS/REV. RADIUS.

PLACE COP-TSCREW-1 ON BOTH SIDES OF THE SEAMS.

PLACE COP-KCVRET-W-1 AS CLOSE TO THE END EDGE AS YOU CAN GET.

FIELD CUTS MUST BE MADE WHEN APPLICABLE

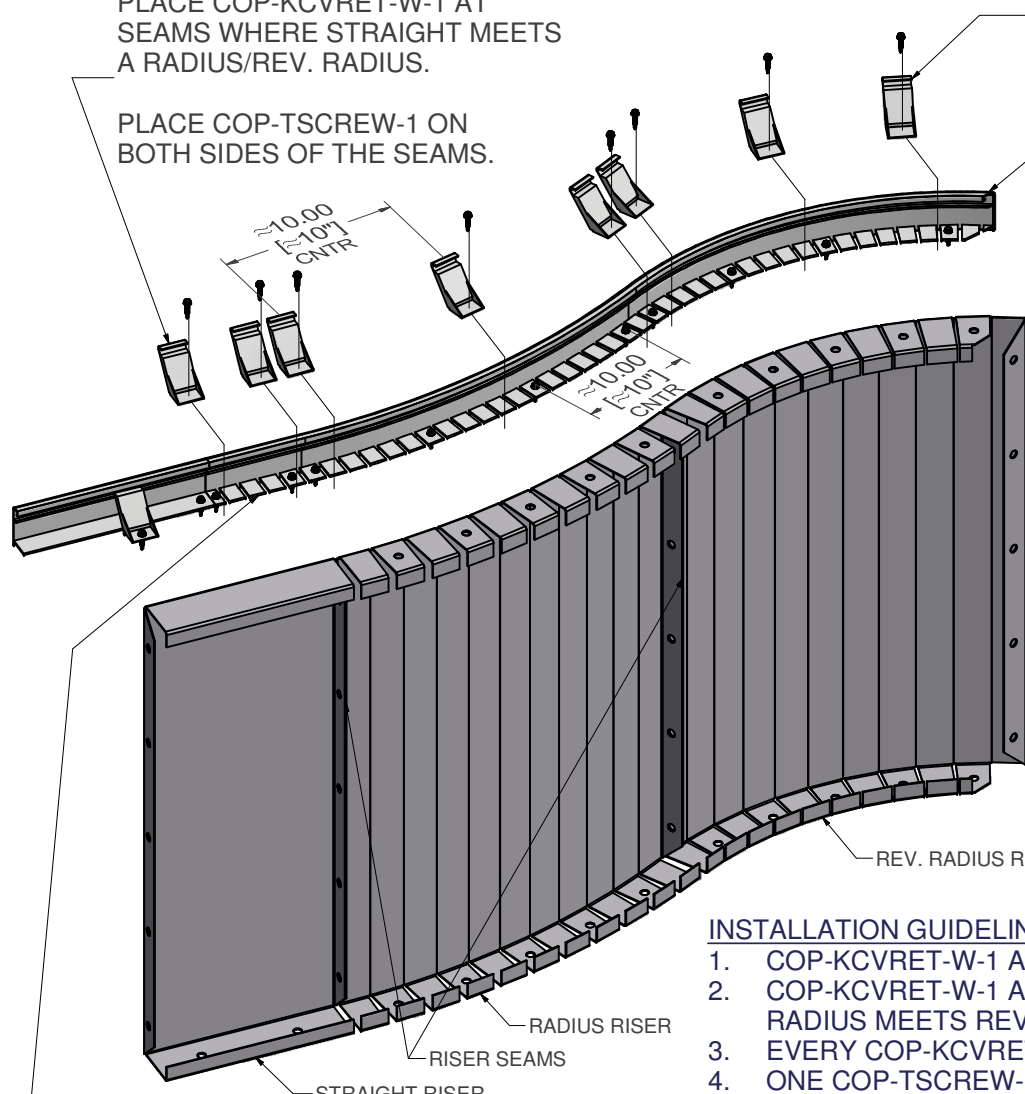


COP-TSPK100
(BAG QTY. = 100)

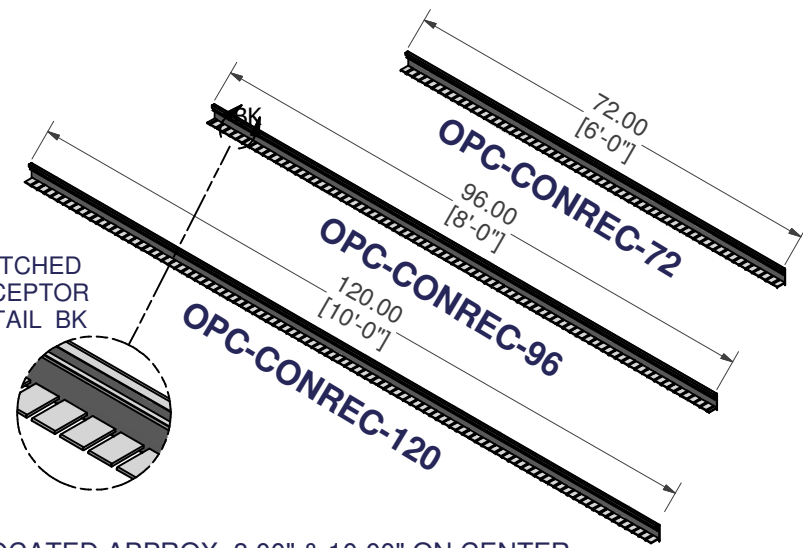


COP-TSCREW-1

COP-KCVRET-W-1



NOTCHED RECEPTOR DETAIL BK



ALLOW AN APPROX. OF 6.00" OF OVERLAP GOING FROM RADIUS/ REV. RADIUS TO A STRAIGHT RISER.

INSTALLATION GUIDELINES

1. COP-KCVRET-W-1 ARE LOCATED APPROX. 8.00" & 10.00" ON CENTER.
2. COP-KCVRET-W-1 AND COP-TSCREW-1 ARE LOCATED ON BOTH SIDES OF THE SEAM WHERE RADIUS MEETS REV. RADIUS.
3. EVERY COP-KCVRET-W-1 REQUIRES ONE COP-TSCREW-1.
4. ONE COP-TSCREW-1 IS PLACED AT EACH END OF A RISER BETWEEN 0.25"-0.5" FROM THE BEGINNING AND END.
5. COP-TSCREW-1 ARE SPACED APPROX. 8.00" TO 10.00" APART ALONG THE RECEPTOR.
6. IF A COP-TSCREW-1 FALLS ON A HOLE, THE COP-TSCREW-1 IS RELOCATED TO AVOID HOLE.
7. ONE COP-KCVRET-W-1 MUST BE LOCATED ON THE SEAM WHERE NOTCHED MEETS NON-NOTCHED CONCRETE RECEPTOR.

NOTCHED CONCRETE RECEPTOR FIELD INSTALLATION

PART #: REV-RADIUS CONCRETE RECEPTOR

WEIGHT:
52.49 lbmass

MACHINE TIME:
N/A

FILE/DIRECTORY:

C:\Vault\FTW\Design\CUSTOM STEPS\ESC-17000-17999\ESC-17406.idw



TOLERANCES EXCEPT AS NOTED
0/0 0.0 0.00 0.000 0'
±1/8 ±0.25 ±0.0625 ±0.03125 ±1/2"

MATERIAL:

DATE: 8/10/2023

NOTES:

DRAWN BY: AK

SHEET: 16 OF 16