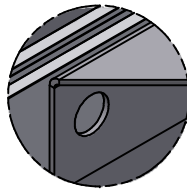


Parts List

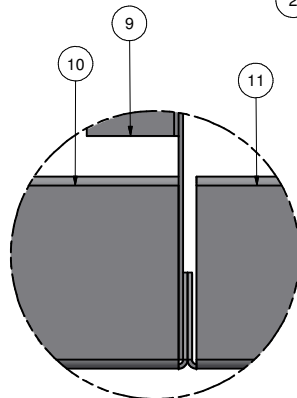
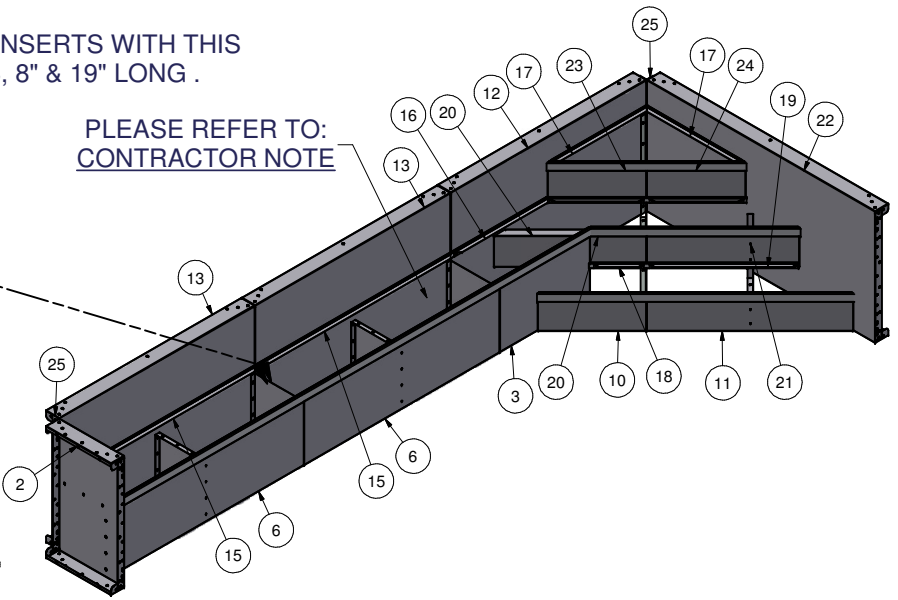
ITEM	QTY	PART NUMBER	DESCRIPTION
1	38	COP-KCVRET-W-1	COP COPING STIFFNER 1 5/8"-1PC
2	1	ESC-5432-SWE	STRAIGHT, SIDE WALL, END
3	1	ESC-7449-BNRR	STRAIGHT, BENCH RISER, RIGHT
4	2	ESC-7449-BNRS	BRACE, BENCH RISER SUPPORT
5	2	ESC-7459-BRMS	BRACE, BENCH RISER MIDDLE SUPPORT
6	2	ESC-7807-BNR	STRAIGHT, BENCH RISER
7	1	ESC-8849-LV 6	STRAIGHT, LEVELER 6
8	1	ESC-17260-CSB	BRACE, 2- RISER SUPPORT
9	1	ESC-17569-B	BRACE, 3-RISER SUPPORT
10	1	ESC-17569-BRL	STRAIGHT, BOTTOM RISER, LEFT
11	1	ESC-17569-BRR	STRAIGHT, BOTTOM RISER, RIGHT
12	1	ESC-17569-BW	STRAIGHT, BACK WALL
13	2	ESC-17569-BWL	STRAIGHT, BACK WALL, LEFT
14	2	ESC-17569-LV	STRAIGHT, LEVELER
15	2	ESC-17569-LV1	STRAIGHT, LEVELER 1
16	1	ESC-17569-LV2	STRAIGHT, LEVELER 2
17	2	ESC-17569-LV3	STRAIGHT, LEVELER 3
18	1	ESC-17569-LV4	STRAIGHT, LEVELER 4
19	1	ESC-17569-LV5	STRAIGHT, LEVELER 5
20	1	ESC-17569-MRL	STRAIGHT, MIDDLE RISER, LEFT
21	1	ESC-17569-MRR	STRAIGHT, MIDDLE RISER, RIGHT
22	1	ESC-17569-SW	STRAIGHT, SIDE WALL
23	1	ESC-17569-TRL	STRAIGHT, TOP RISER, LEFT
24	1	ESC-17569-TRR	STRAIGHT, TOP RISER, RIGHT
25	2	IPC-AB90	90 DEGREE BRACE
26	5	M0065-1	PANEL Z-RIB W/BUTTRESS HOLES
27	0'	OPC-CONREC-XX	NOTCHED CONCRETE RECEPTOR
28	31'	OPC-CONREC-XXU	UN-NOTCHED CONCRETE RECEPTOR
29	32'	SSC-1099-PFT	STEEL STEP PVC BEAD RETAINER (PER FT)

**NOTE:**  
INCLUDE (2) PVC 6" RADIUS INSERTS WITH THIS STEP/BENCH FOR CORNERS, 8" & 19" LONG .



**BEAD RECEIVER DETAIL**

**PLEASE REFER TO:**  
CONTRACTOR NOTE



**TOP VIEW**  
BRACE CONNECTED TO INSIDE FLANGE OF THE LEFT RISER

**CONTRACTOR NOTE:**

CONTRACTOR IS RESPONSIBLE FOR SECURING ALL RISERS INTO PLACE WITH REBAR HOLES BEFORE BACKFILLING THIS CUSTOM STEP

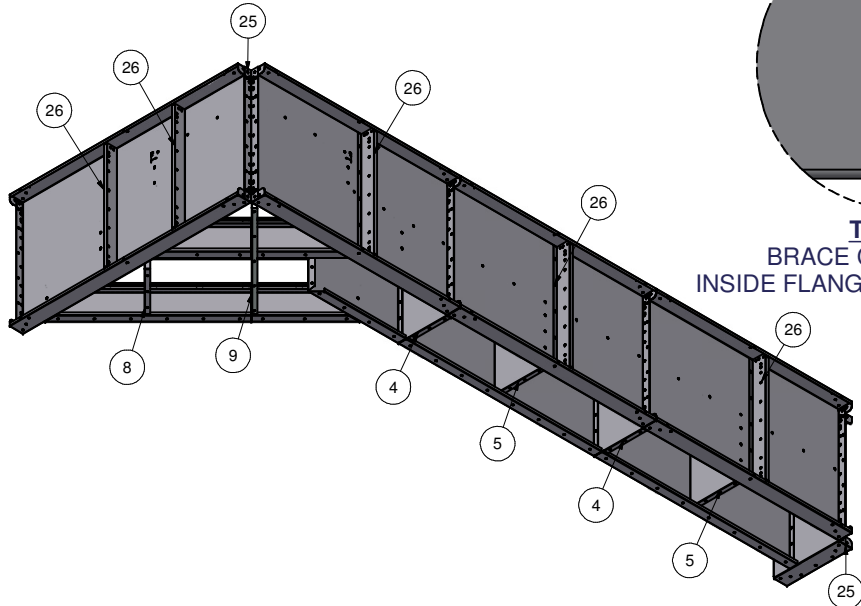
**CONTRACTOR MUST FIELD FIT ALL CONCRETE RECEPTOR.**

TOTALS REQUIRED FOR THIS CUSTOM PRODUCT APPLICATION.  
OPC-CONREC-XX (NOTCHED) = 00" (0')  
OPC-CONREC-XXU (UN-NOTCHED) = 372" (31')  
COP-KCVRET-W-1 (STIFFENER) = 38

KEEP BEAD RECEIVERS ATTACHED TO THE STEP/BENCH TREADS AND TO WALL PANELS FOR SHIPPING. A TOTAL OF 384" (32') OF BEAD RECEIVER IS REQUIRED.

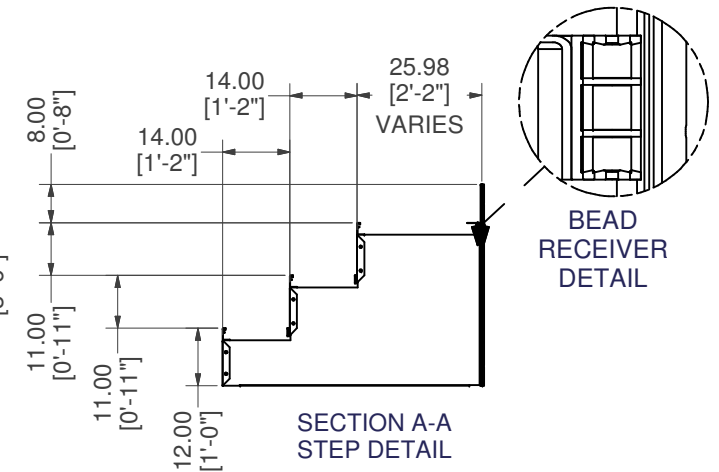
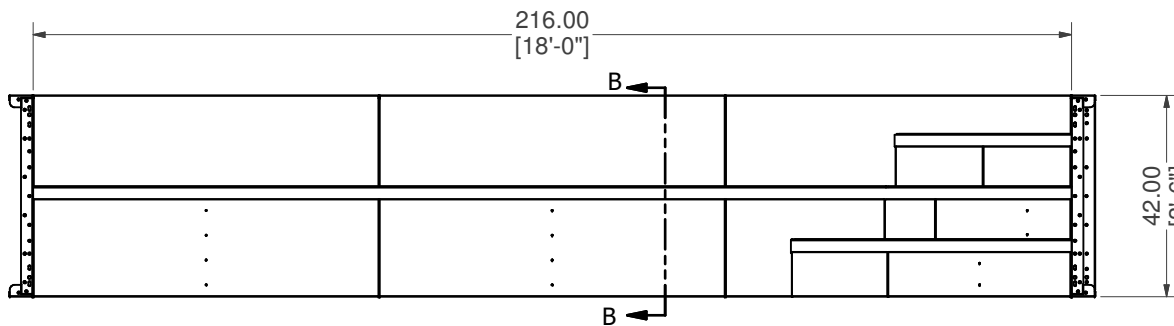
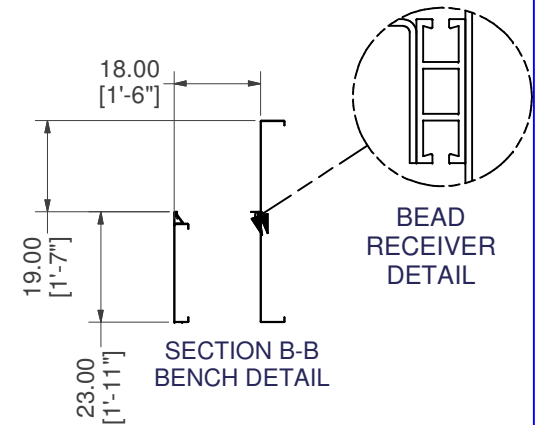
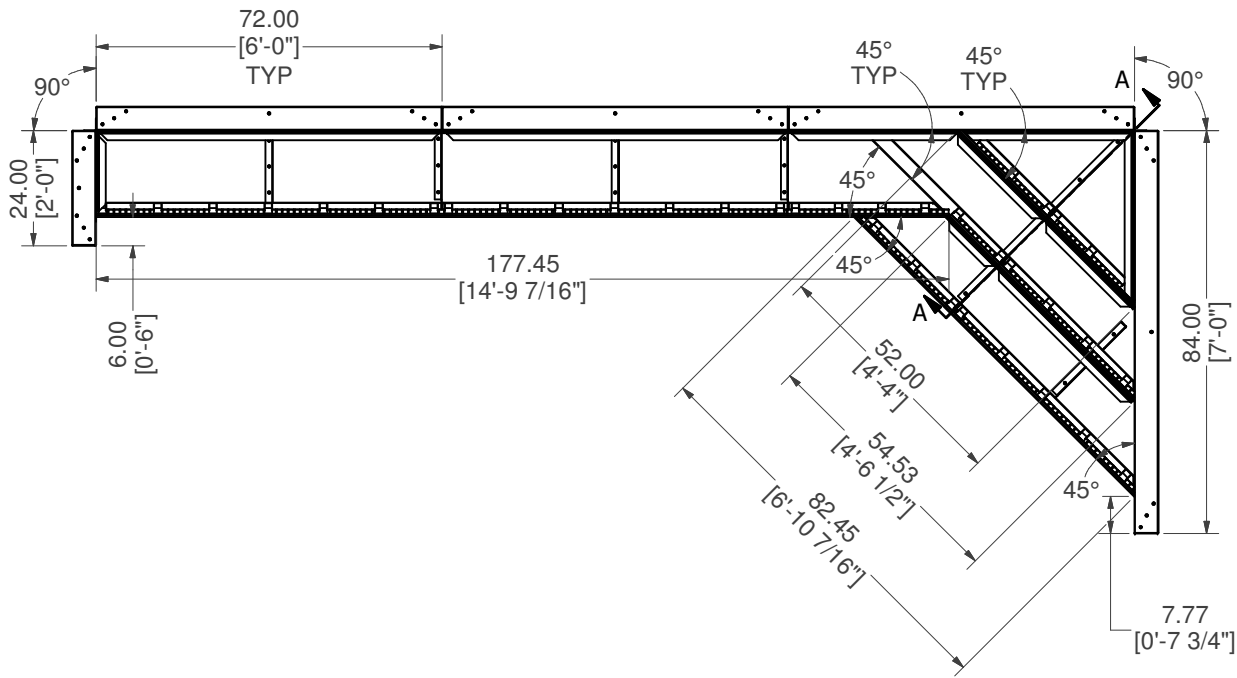
**CONTRACTOR NOTE:**

BACK FILL STEP/BENCH AREA WITH COMPACTED EARTH MATERIAL. FINISH STEP/BENCH AREA WITH 2" OF HARDEN FLOOR MATERIAL TO MATCH REQUIRED DEPTH (FLUSH WITH TOP OF BEAD RECEIVER).




# 18' X 7' X 90° CRN OPEN TOP CORNER STEP W/ BENCH LEFT

<b>PART #:</b> ESC-17569  	<b>WEIGHT:</b> 688.42 lbmass	<b>MACHINE TIME:</b> N/A	<b>FILE/DIRECTORY:</b> C:\Vault\FTW\Design\CUSTOM STEPS\ESC-17000-17999\ESC-17569.idw
	<b>TOLERANCES EXCEPT AS NOTED</b> 0/0 0.0 0.00 0.000 0' ±1/8 ±0.25 ±0.0625 ±0.03125 ±1/2"	<b>MATERIAL:</b>  <b>DRAWN BY:</b> AK	<b>DATE:</b> 9/8/2023  <b>SHEET:</b> 1 OF 23

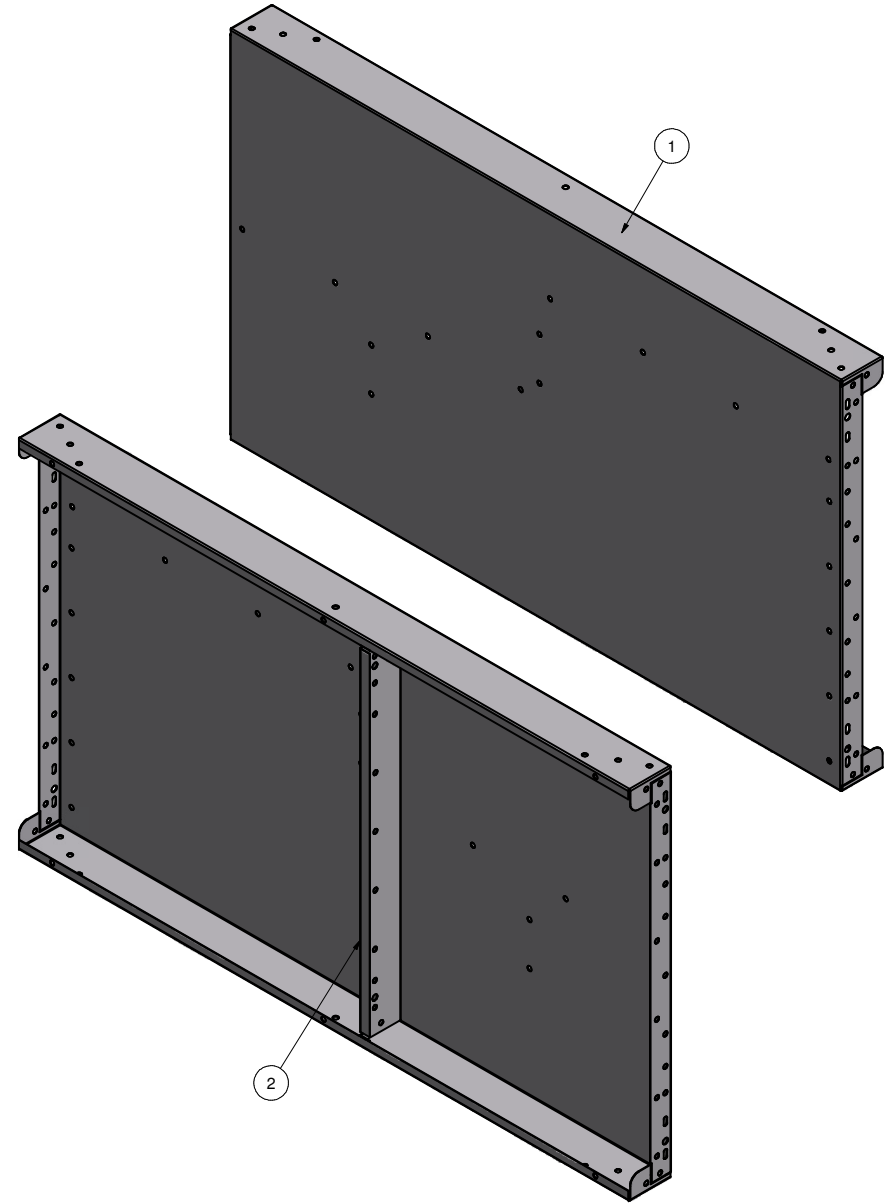
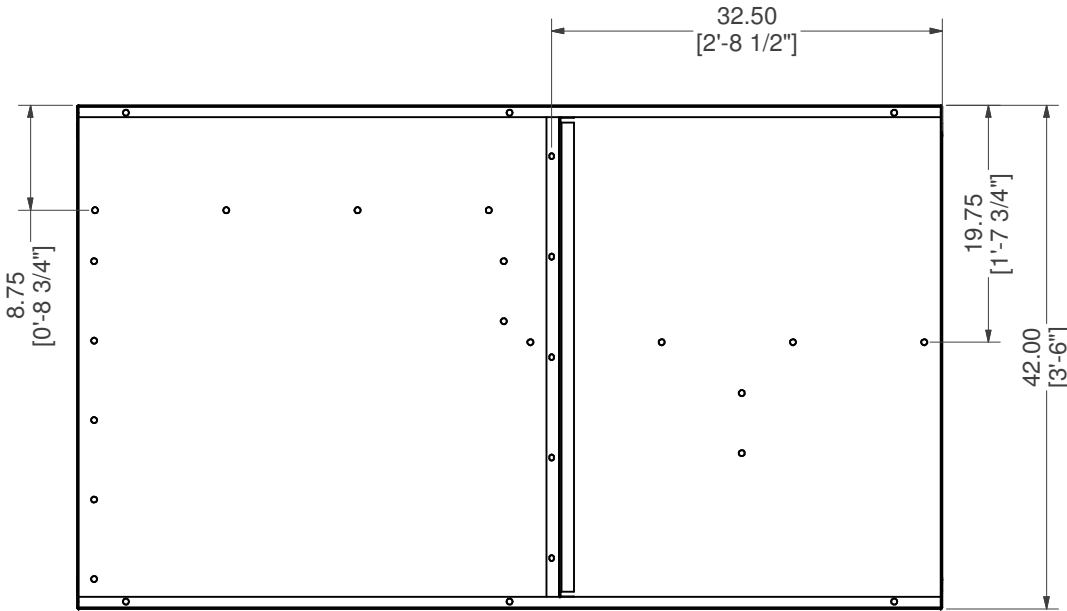
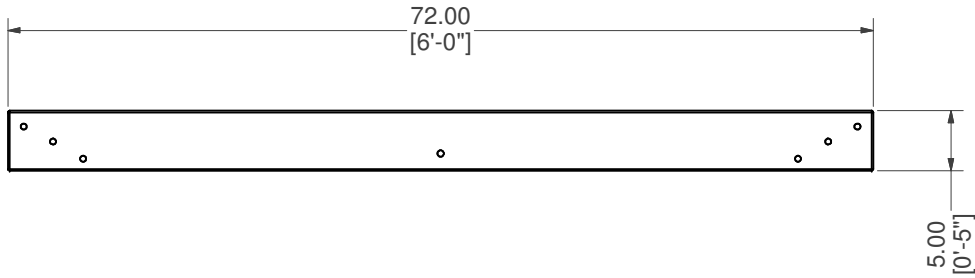


# 18' X 7' X 90° CRN OPEN TOP CORNER STEP W/ BENCH LEFT


<b>PART #:</b> ESC-17569	<b>WEIGHT:</b> 688.42 lbmass	<b>MACHINE TIME:</b> N/A	<b>FILE/DIRECTORY:</b> C:\Vault\FTW\Design\CUSTOM STEPS\ESC-17000-17999\ESC-17569.idw
	TOLERANCES EXCEPT AS NOTED	<b>MATERIAL:</b>	<b>DATE:</b> 9/8/2023
	0/0 0.0 0.00 0.000 0'	<b>DRAWN BY:</b> AK	<b>SHEET:</b> 2 OF 23
±1/8 ±0.25 ±0.0625 ±0.03125 ±1/2'			<b>NOTES:</b>

Parts List			
ITEM	QTY	PART NUMBER	DESCRIPTION
1	1	ESC-17569-BW	STRAIGHT, BACK WALL
2	1	M0065-1	PANEL Z-RIB W/BUTTRESS HOLES

# WELDCODE #8

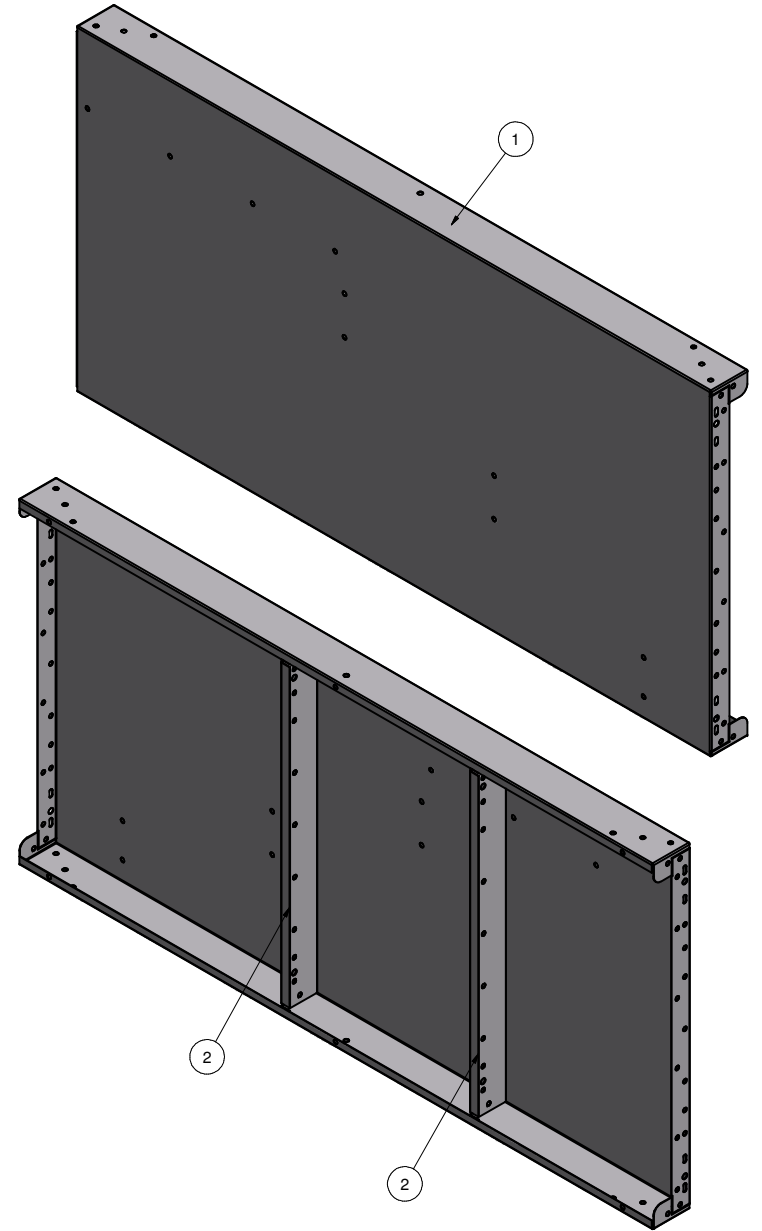
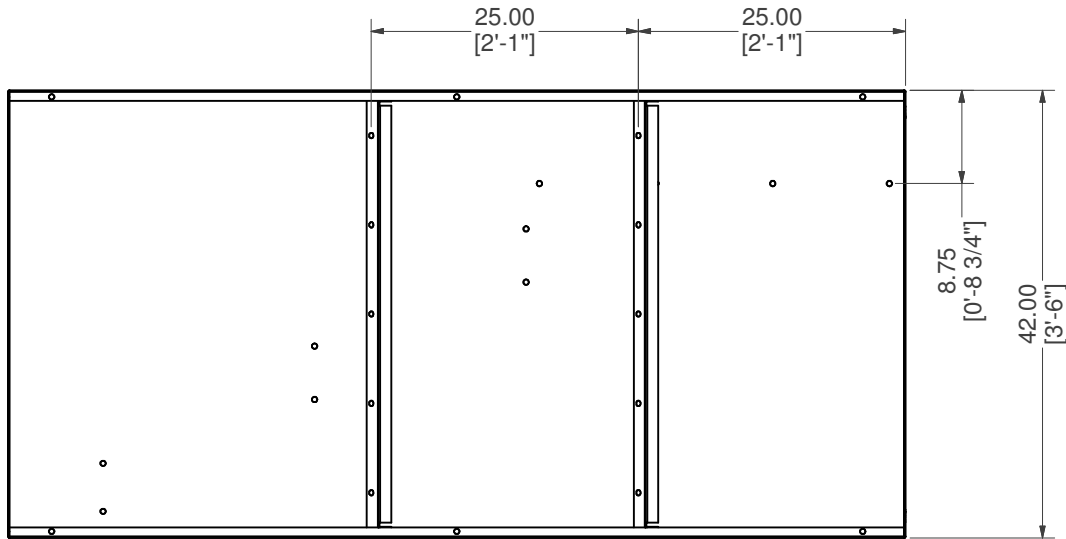
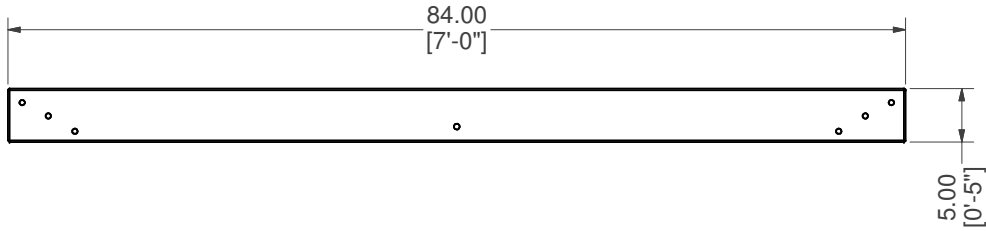


## STRAIGHT, BACK WALL W/Z-RIB


<b>PART #:</b> ESC-17569-BW 	<b>WEIGHT:</b> 87.75 lbmass	<b>MACHINE TIME:</b> N/A	<b>FILE/DIRECTORY:</b> C:\Vault\FTW\Design\CUSTOM STEPS\ESC-17000-17999\ESC-17569.idw
	<b>TOLERANCES EXCEPT AS NOTED</b> 0/0 0.0 0.00 0.000 0' ±1/8 ±0.25 ±0.0625 ±0.03125 ±1/2'	<b>MATERIAL:</b>  <b>DRAWN BY:</b> AK	<b>DATE:</b> 9/8/2023  <b>SHEET:</b> 3 OF 23

Parts List			
ITEM	QTY	PART NUMBER	DESCRIPTION
1	1	ESC-17569-SW	STRAIGHT, SIDE WALL
2	2	M0065-1	PANEL Z-RIB W/BUTTRESS HOLES

# WELDCODE #32



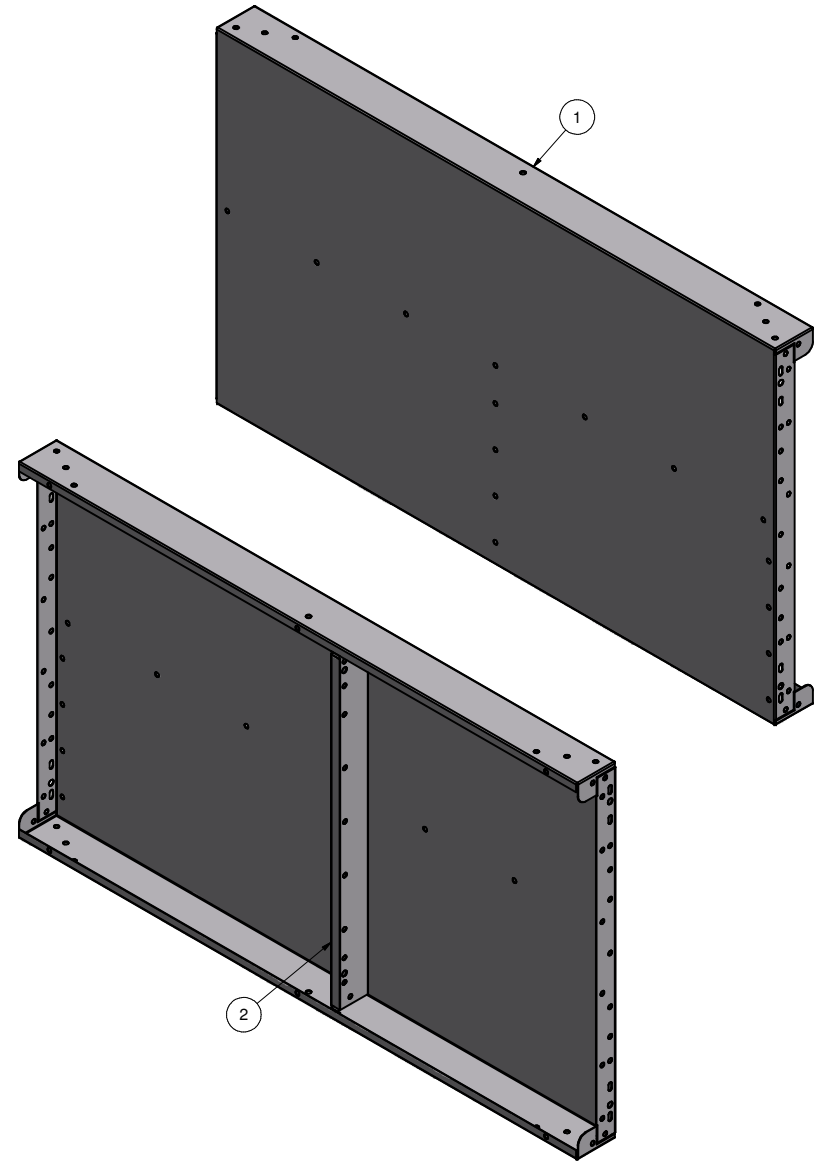
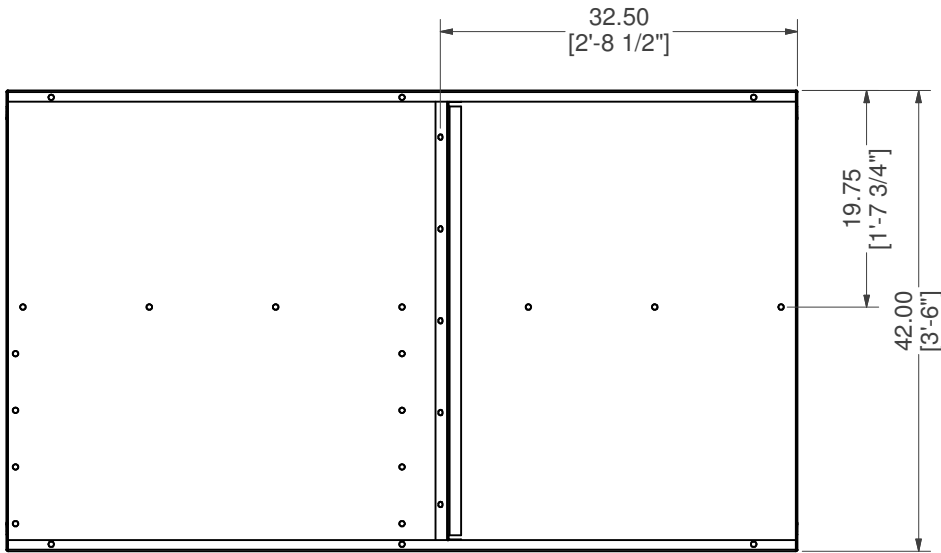
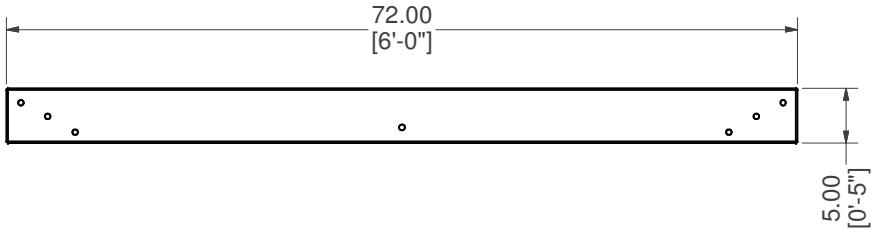
## STRAIGHT, SIDE WALL, W/Z-RIB

<b>PART #:</b> ESC-17569-SW  	<b>WEIGHT:</b> 106.22 lbmass	<b>MACHINE TIME:</b> N/A	<b>FILE/DIRECTORY:</b> C:\Vault\FTW\Design\CUSTOM STEPS\ESC-17000-17999\ESC-17569.idw
	<b>TOLERANCES EXCEPT AS NOTED</b> 0/0 0.0 0.00 0.000 0' ±1/8 ±0.25 ±0.0625 ±0.03125 ±1/2"	<b>MATERIAL:</b>  <b>DRAWN BY:</b> AK	<b>DATE :</b> 9/8/2023  <b>SHEET :</b> 4 OF 23

Parts List

ITEM	QTY	PART NUMBER	DESCRIPTION
1	1	ESC-17569-BWL	STRAIGHT, BACK WALL, LEFT
2	1	M0065-1	PANEL Z-RIB W/BUTTRESS HOLES

# WELDCODE #8



## STRAIGHT, BACK WALL, LEFT W/Z-RIB

**PART #:** ESC-17569-BWL

**WEIGHT:**  
87.76 lbmass

**MACHINE TIME:**  
N/A

**FILE/DIRECTORY:**  
C:\Vault\FTW\Design\CUSTOM STEPS\ESC-17000-17999\ESC-17569.idw

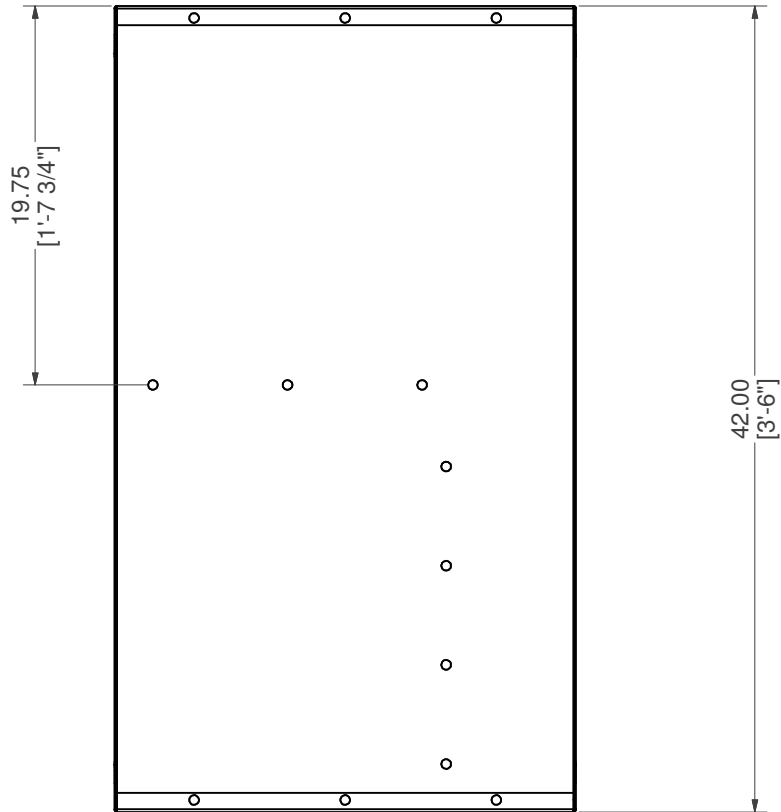
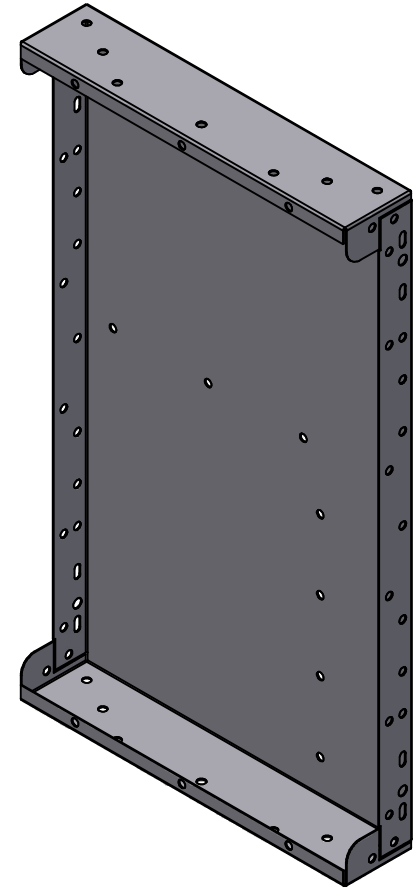
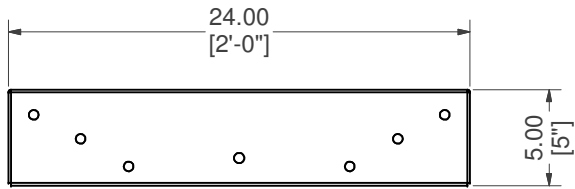


TOLERANCES EXCEPT AS NOTED  
0/0 0.0 0.00 0.000 0'  
±1/8 ±0.25 ±0.0625 ±0.03125 ±1/2'


**MATERIAL:**  
  
**DRAWN BY:** AK

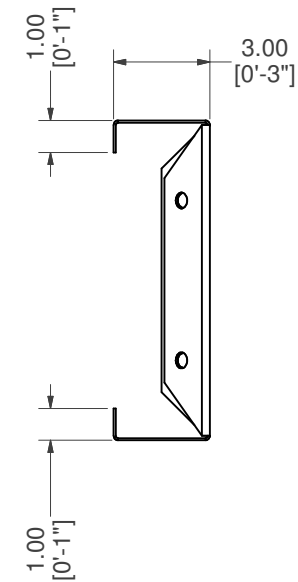
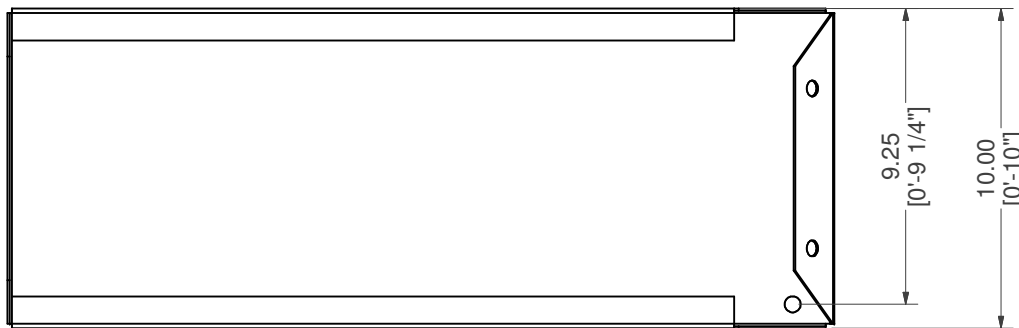
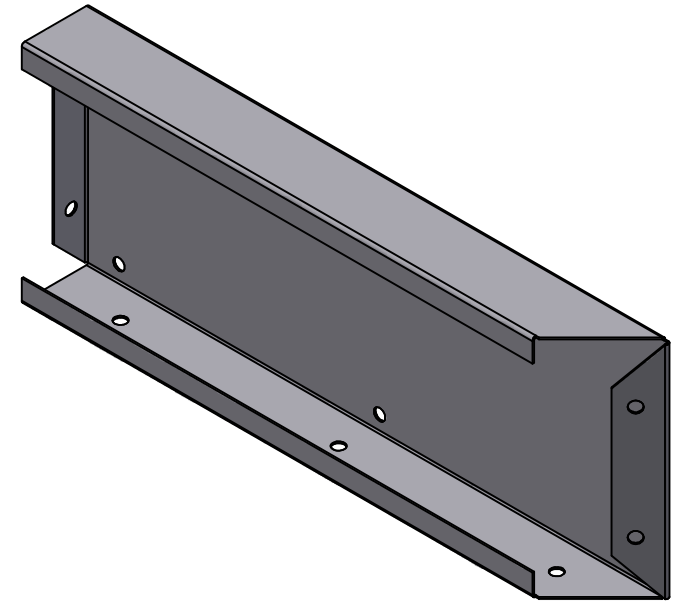
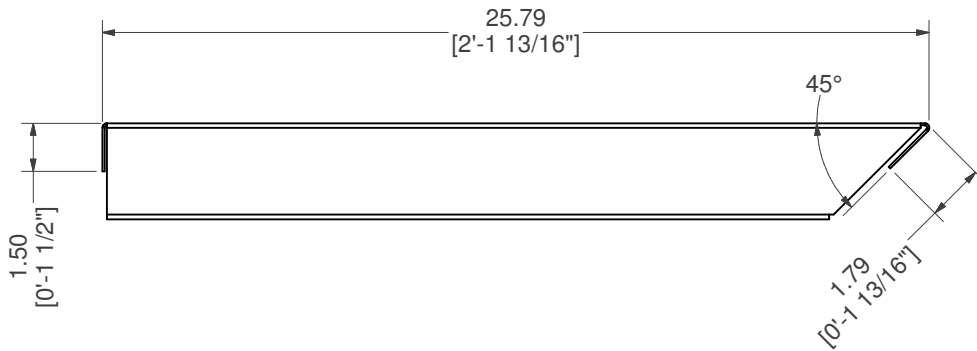
**DATE :** 9/8/2023  
**SHEET :** 5 OF 23

**NOTES:**  
WELDCODE #8  
LOCATE 32.5" FROM  
LEADING EDGE




## STRAIGHT, SIDE WALL, END

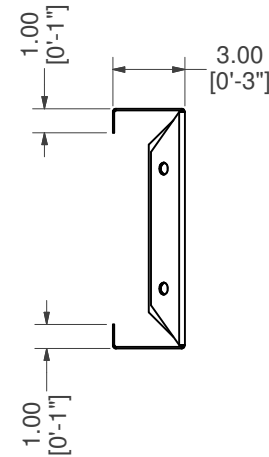
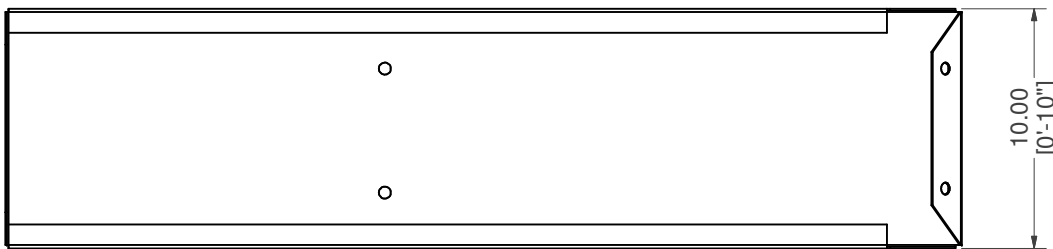
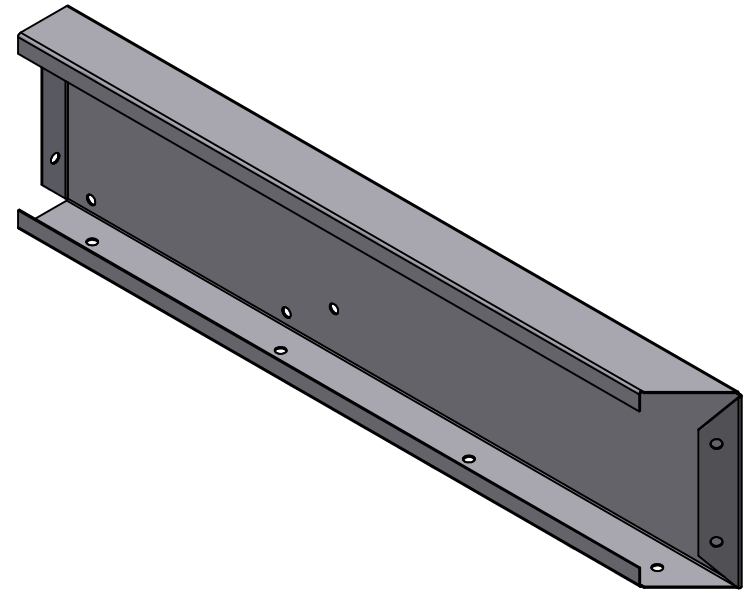
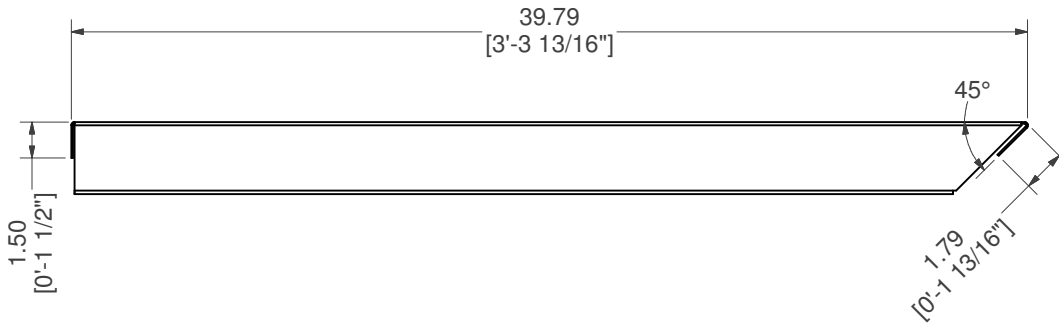
<b>PART #:</b> ESC-5432-SWE  	<b>WEIGHT:</b> 30.20 lbmass	<b>MACHINE TIME:</b> N/A	<b>FILE/DIRECTORY:</b> C:\Vault\FTW\Design\CUSTOM STEPS\ESC-17000-17999\ESC-17569.idw
	<b>TOLERANCES EXCEPT AS NOTED</b> 0/0 0.0 0.00 0.000 0' ±1/8 ±0.25 ±0.0625 ±0.03125 ±1/2'	<b>MATERIAL:</b> 14 GA. GALVANIZED	<b>DATE :</b> 9/8/2023
	<b>DRAWN BY:</b> AK	<b>SHEET :</b> 6 OF 23	



**NOTE:**  
RIGHT SIDE PART IS SYMMETRICAL TO LEFT SIDE PART SHOWN.

# STRAIGHT, TOP RISER, LEFT

<b>PART #:</b> ESC-17569-TRL  	<b>WEIGHT:</b> 9.35 lbmass	<b>MACHINE TIME:</b> N/A	<b>FILE/DIRECTORY:</b> C:\Vault\FTW\Design\CUSTOM STEPS\ESC-17000-17999\ESC-17569.idw
	<b>TOLERANCES EXCEPT AS NOTED</b> 0/0 0.0 0.00 0.000 0' ±1/8 ±0.25 ±0.0625 ±0.03125 ±1/2'	<b>MATERIAL:</b> 14 GA. GALVANIZED	<b>DATE:</b> 9/8/2023
<b>DRAWN BY:</b> AK	<b>SHEET:</b> 7 OF 23		



# STRAIGHT, MIDDLE RISER, LEFT

**PART #:** ESC-17569-MRL

**WEIGHT:**  
14.33 lbmass

**MACHINE TIME:**  
N/A

**FILE/DIRECTORY:**  
C:\Vault\FTW\Design\CUSTOM STEPS\ESC-17000-17999\ESC-17569.idw



TOLERANCES EXCEPT AS NOTED  
0/0 0.0 0.00 0.000 0'  
±1/8 ±0.25 ±0.0625 ±0.03125 ±1/2'

**MATERIAL:**  
14 GA. GALVANIZED

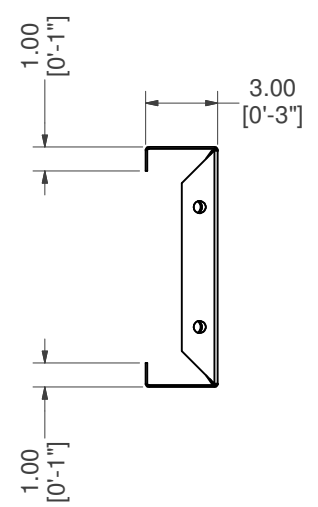
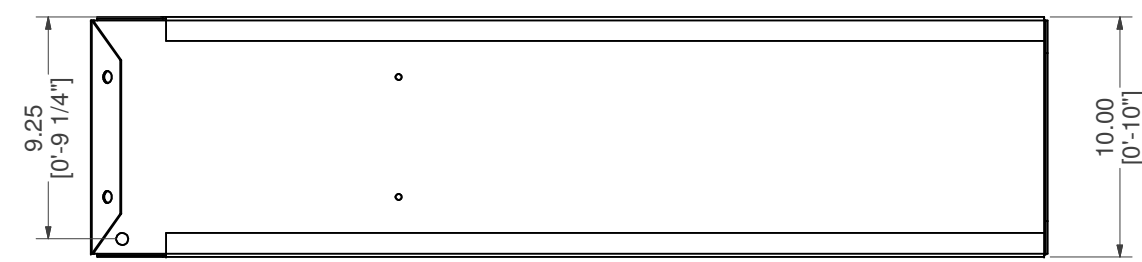
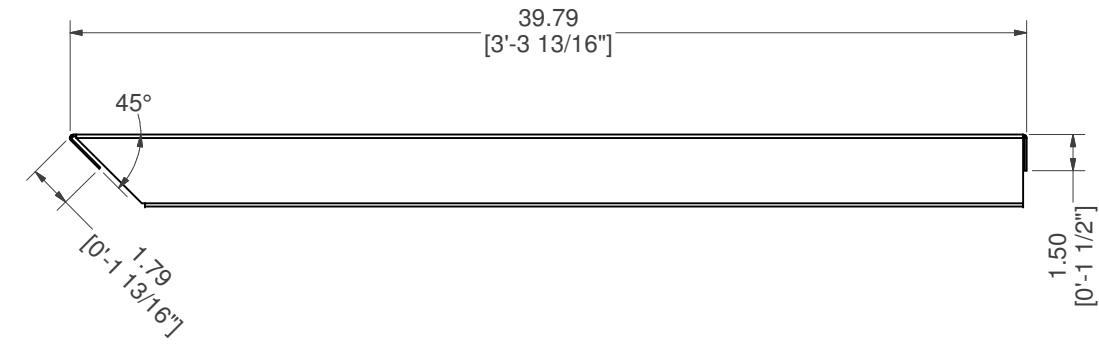
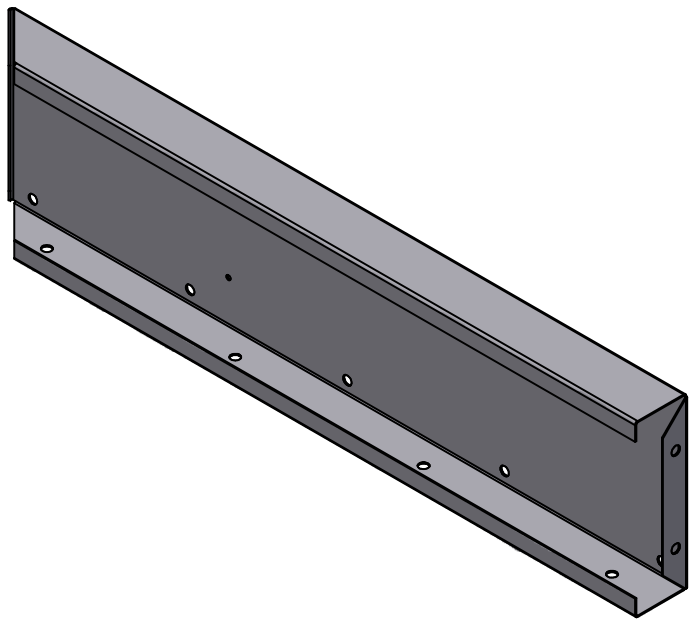
**DATE :** 9/8/2023

**NOTES:**


**DRAWN BY:** AK

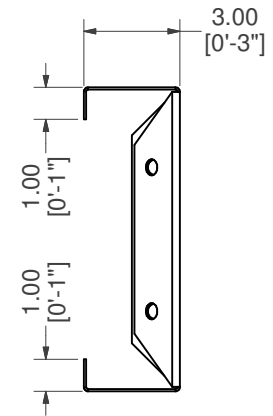
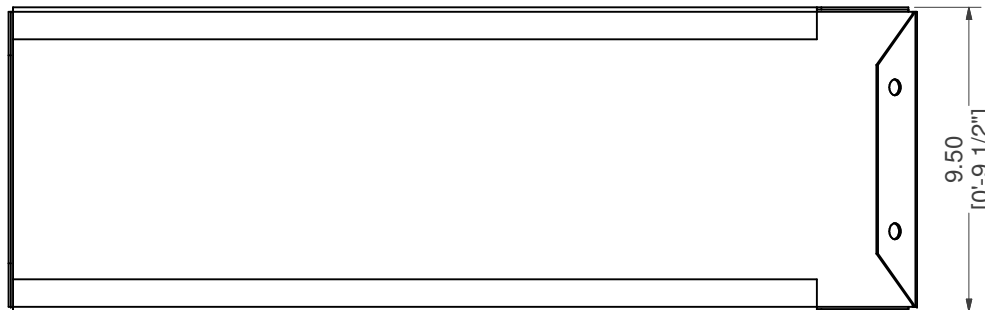
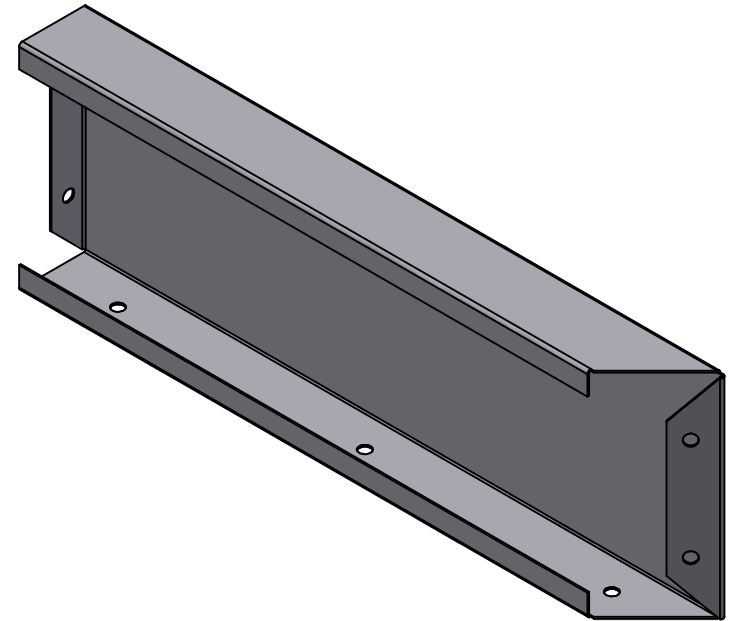
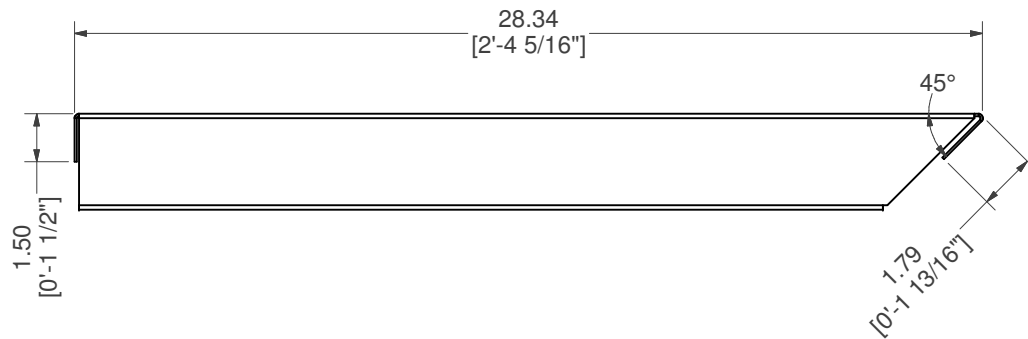
**SHEET :** 8 OF 23






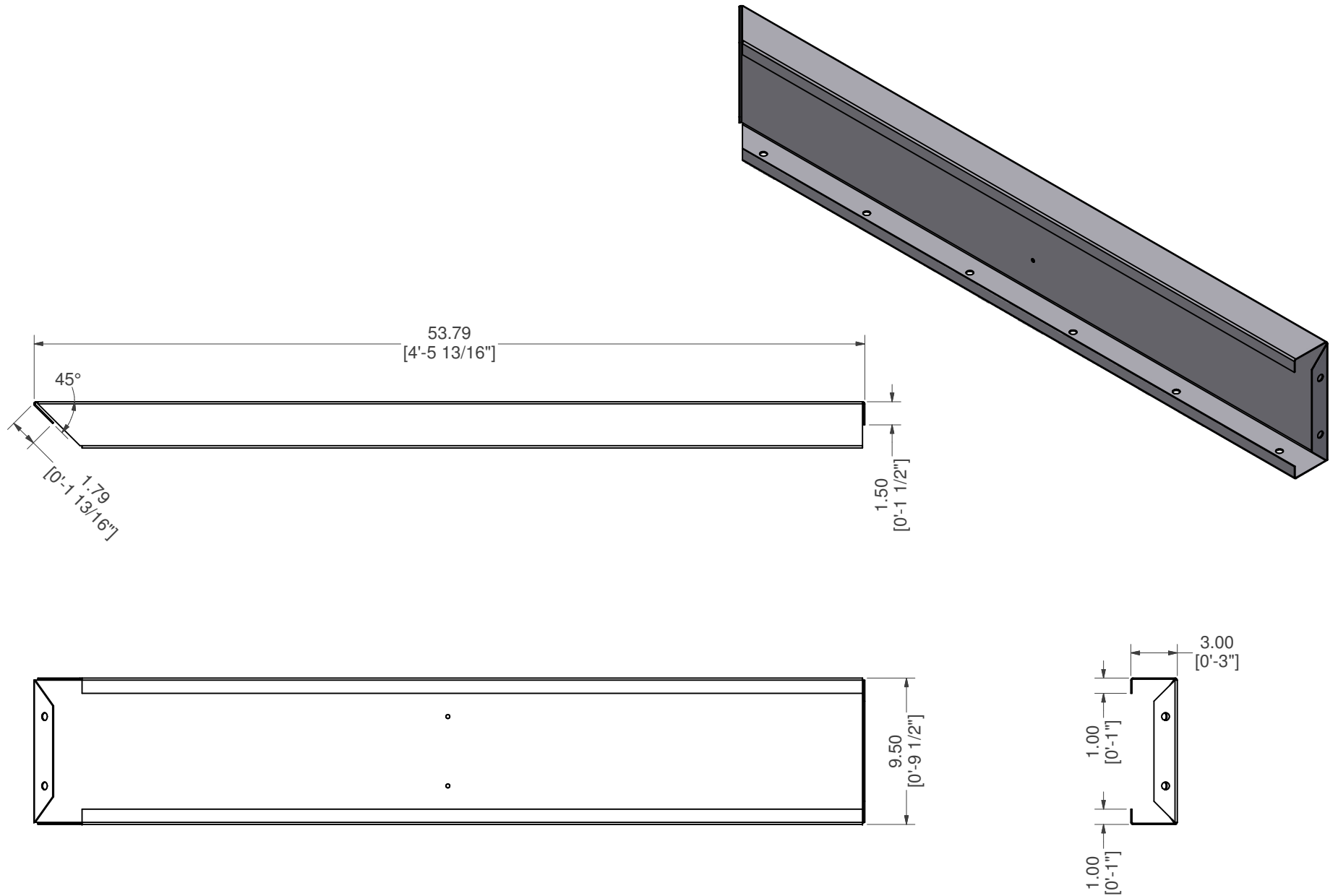
# STRAIGHT, MIDDLE RISER, RIGHT

<b>PART #:</b> ESC-17569-MRR  	<b>WEIGHT:</b> 14.33 lbmass	<b>MACHINE TIME:</b> N/A	<b>FILE/DIRECTORY:</b> C:\Vault\FTW\Design\CUSTOM STEPS\ESC-17000-17999\ESC-17569.idw
	TOLERANCES EXCEPT AS NOTED 0/0 0.0 0.00 0.000 0' ±1/8 ±0.25 ±0.0625 ±0.03125 ±1/2'	<b>MATERIAL:</b> 14 GA. GALVANIZED	<b>DATE :</b> 9/8/2023
<b>DRAWN BY:</b> AK	<b>SHEET :</b> 9 OF 23		




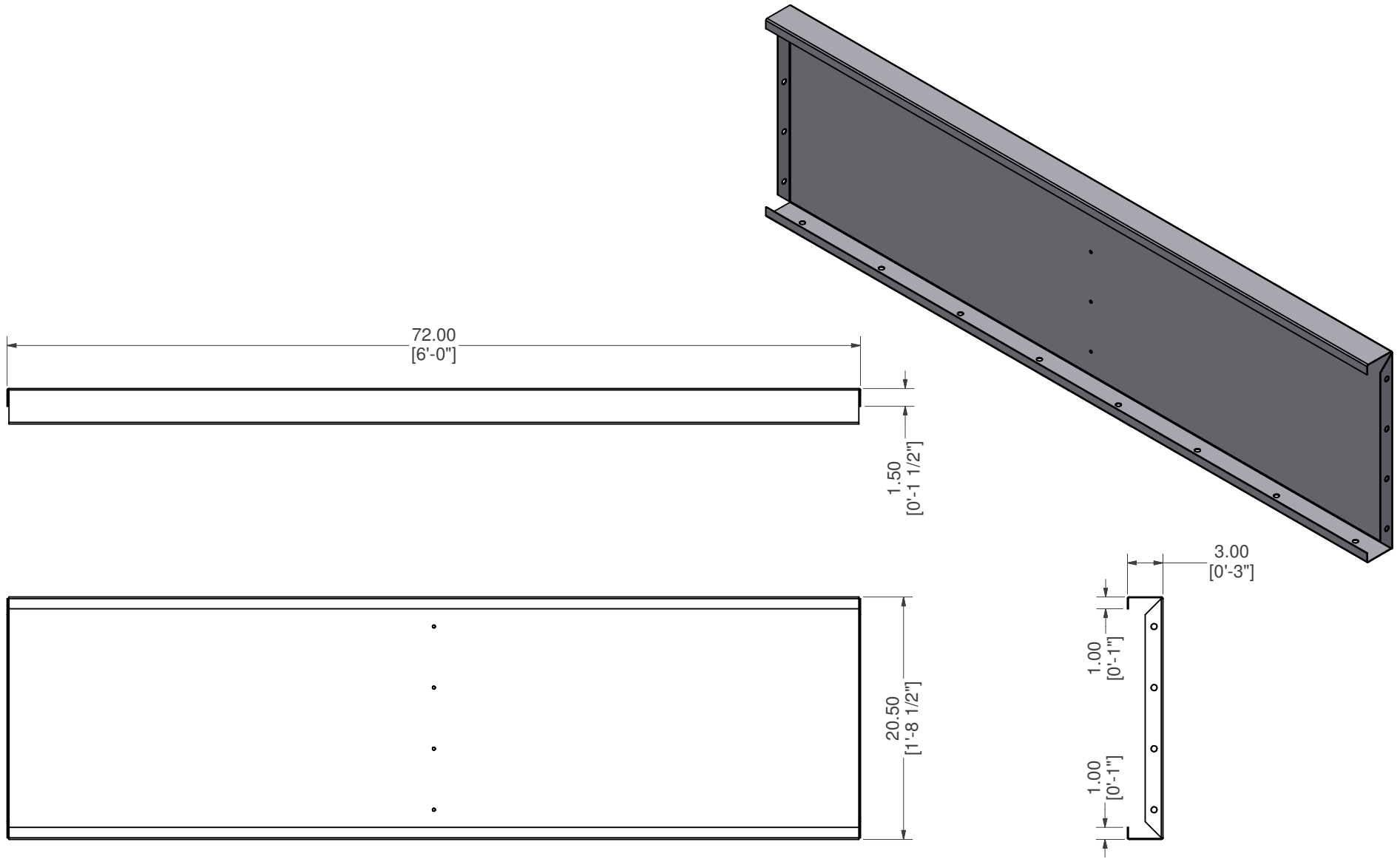
# STRAIGHT, BOTTOM RISER, LEFT

<b>PART #:</b> ESC-17569-BRL  	<b>WEIGHT:</b> 9.95 lbmass	<b>MACHINE TIME:</b> N/A	<b>FILE/DIRECTORY:</b> C:\Vault\FTW\Design\CUSTOM STEPS\ESC-17000-17999\ESC-17569.idw
	TOLERANCES EXCEPT AS NOTED 0/0 0.0 0.00 0.000 0' ±1/8 ±0.25 ±0.0625 ±0.03125 ±1/2'	<b>MATERIAL:</b> 14 GA. GALVANIZED	<b>DATE :</b> 9/8/2023
<b>DRAWN BY:</b> AK	<b>SHEET :</b> 10 OF 23		




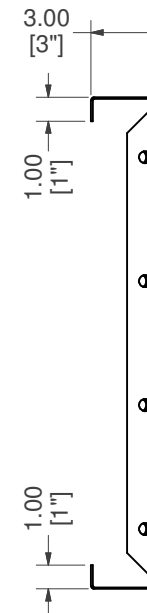
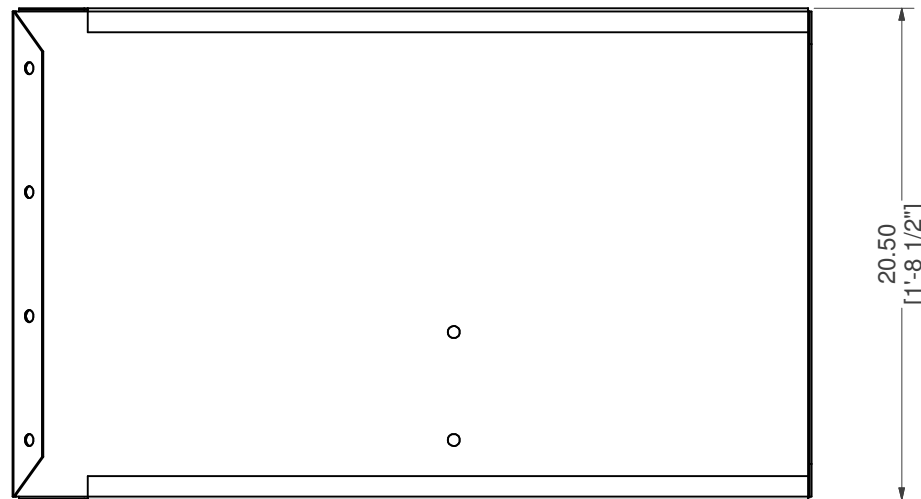
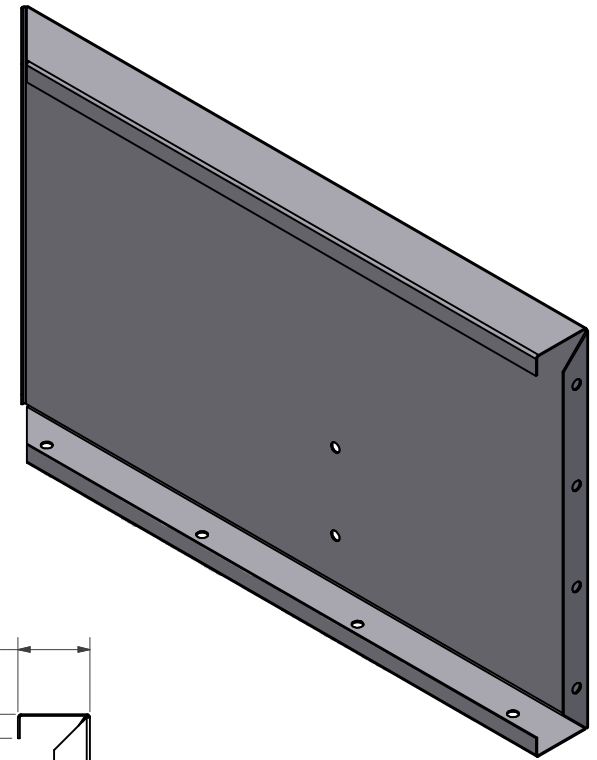
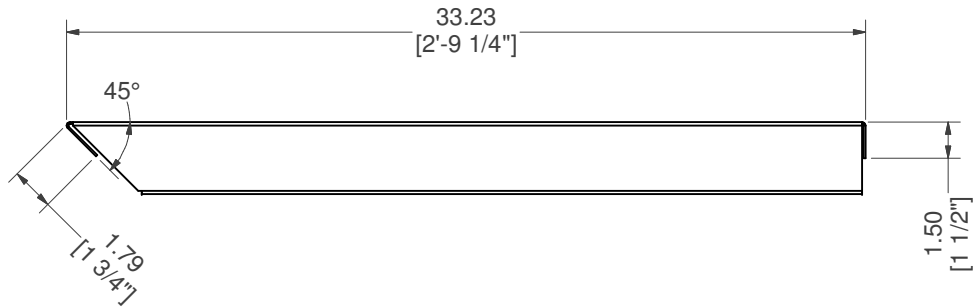
# STRAIGHT, BOTTOM RISER, RIGHT

<b>PART #:</b> ESC-17569-BRR  	<b>WEIGHT:</b> 18.75 lbmass	<b>MACHINE TIME:</b> N/A	<b>FILE/DIRECTORY:</b> C:\Vault\FTW\Design\CUSTOM STEPS\ESC-17000-17999\ESC-17569.idw
	<b>TOLERANCES EXCEPT AS NOTED</b> 0/0 0.0 0.00 0.000 0' ±1/8 ±0.25 ±0.0625 ±0.03125 ±1/2'	<b>MATERIAL:</b> 14 GA. GALVANIZED	<b>DATE :</b> 9/8/2023
<b>DRAWN BY:</b> AK	<b>SHEET :</b> 11 OF 23		




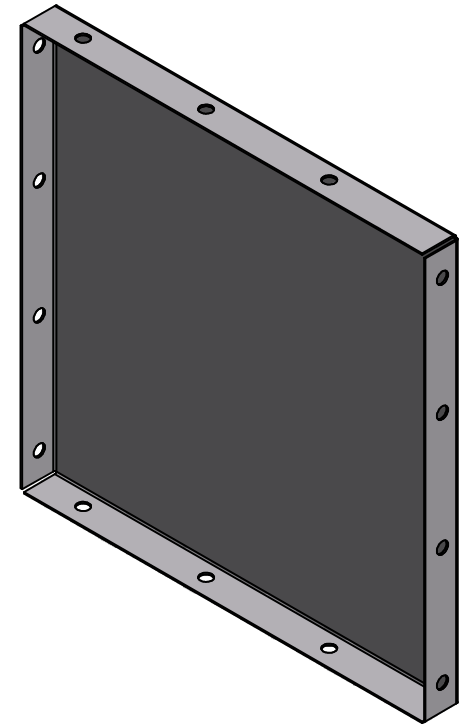
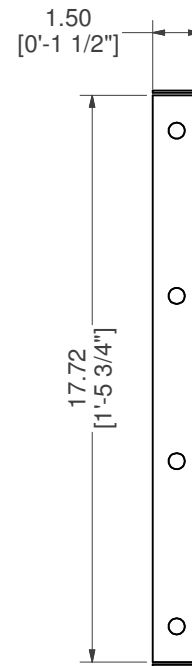
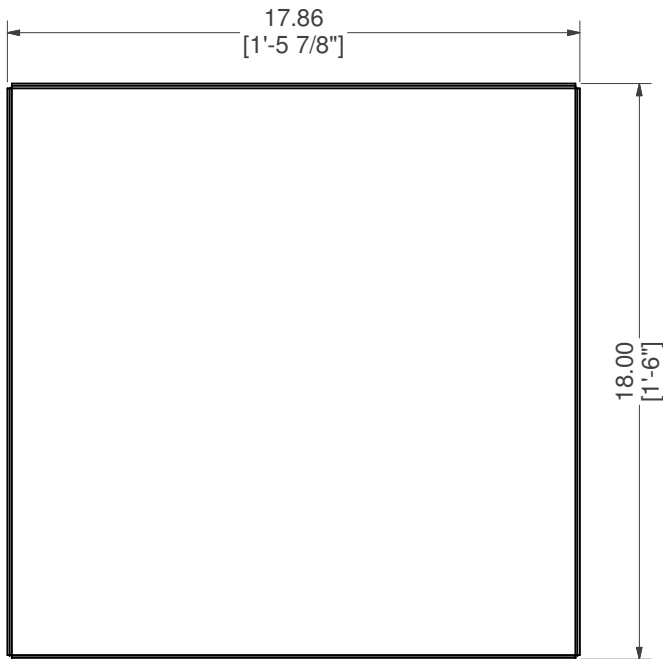
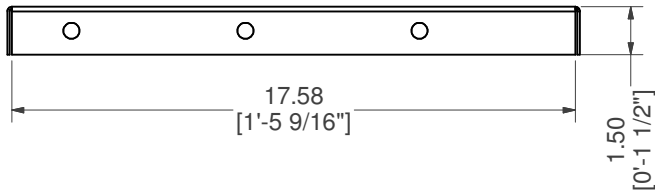
# STRAIGHT, BENCH RISER

<b>PART #:</b> ESC-7807-BNR	<b>WEIGHT:</b> 41.97 lbmass	<b>MACHINE TIME:</b> N/A	<b>FILE/DIRECTORY:</b> C:\Vault\FTW\Design\CUSTOM STEPS\ESC-17000-17999\ESC-17569.idw
	<b>TOLERANCES EXCEPT AS NOTED</b> 0/0 0.0 0.00 0.000 0' ±1/8 ±0.25 ±0.0625 ±0.03125 ±1/2'	<b>MATERIAL:</b> 14 GA. GALVANIZED	<b>DATE :</b> 9/8/2023
		<b>DRAWN BY:</b> AK	<b>SHEET :</b> 12 OF 23
<b>NOTES:</b>			




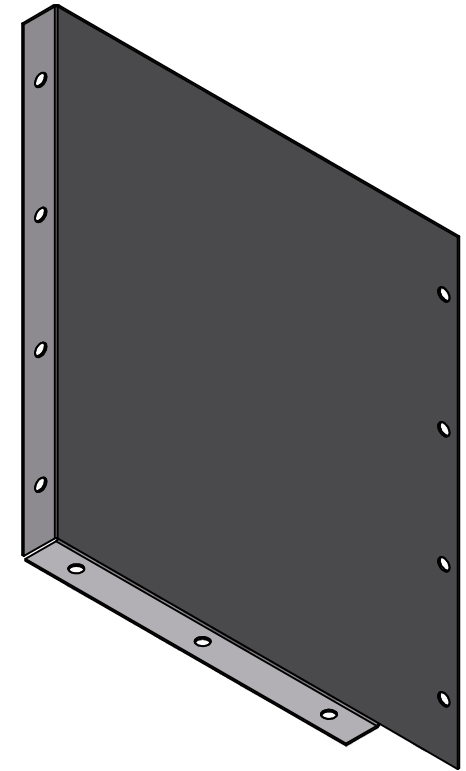
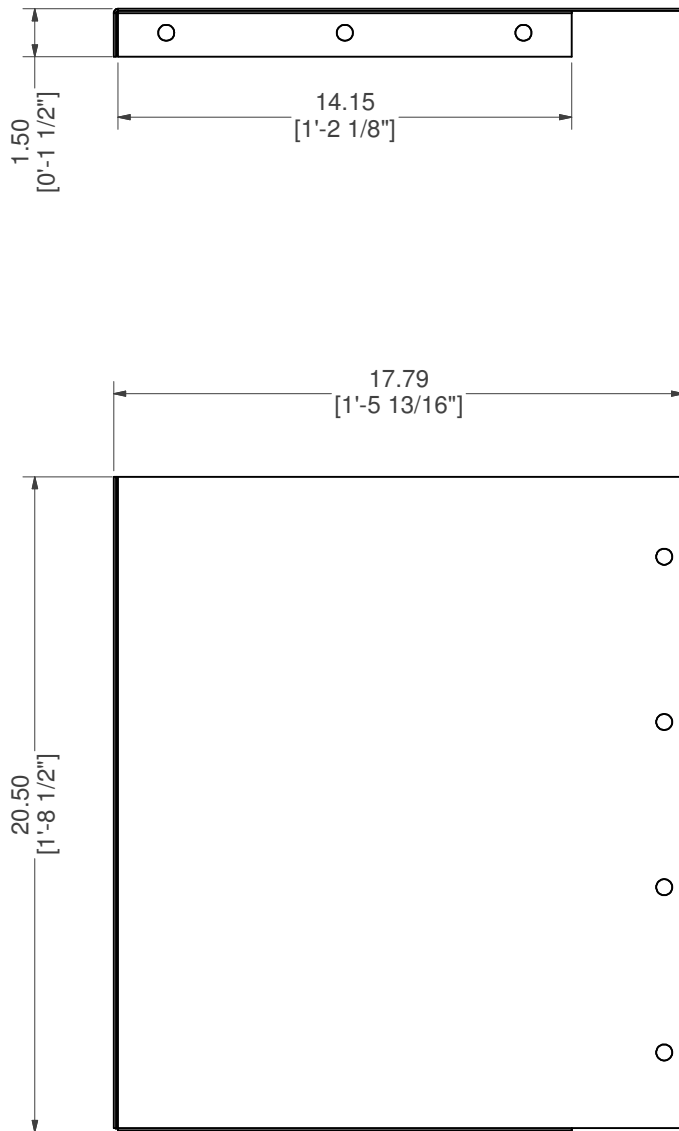
# STRAIGHT, BENCH RISER, RIGHT

<b>PART #:</b> ESC-7449-BNRR	<b>WEIGHT:</b> 19.75 lbmass	<b>MACHINE TIME:</b> N/A	<b>FILE/DIRECTORY:</b> C:\Vault\FTW\Design\CUSTOM STEPS\ESC-17000-17999\ESC-17569.idw
	<b>TOLERANCES EXCEPT AS NOTED</b> 0/0 0.0 0.00 0.000 0' ±1/8 ±0.25 ±0.0625 ±0.03125 ±1/2'	<b>MATERIAL:</b> 14 GA. GALVANIZED  <b>DRAWN BY:</b> AK	<b>DATE :</b> 9/8/2023  <b>SHEET :</b> 13 OF 23  <b>NOTES:</b>



# BRACE, BENCH RISER MIDDLE SUPPORT

<b>PART #:</b> ESC-7459-BRMS  	<b>WEIGHT:</b> 8.46 lbmass	<b>MACHINE TIME:</b> N/A	<b>FILE/DIRECTORY:</b> C:\Vault\FTW\Design\CUSTOM STEPS\ESC-17000-17999\ESC-17569.idw
	<b>TOLERANCES EXCEPT AS NOTED</b> 0/0 0.0 0.00 0.000 0' ±1/8 ±0.25 ±0.0625 ±0.03125 ±1/2'	<b>MATERIAL:</b> 14 GA. GALVANIZED	<b>DATE :</b> 9/8/2023
<b>DRAWN BY:</b> AK	<b>SHEET :</b> 14 OF 23		



## BRACE, BENCH RISER SUPPORT

**PART #:** ESC-7449-BNRS

**WEIGHT:**  
8.33 lbmass

**MACHINE TIME:**  
N/A

**FILE/DIRECTORY:**

C:\Vault\FTW\Design\CUSTOM STEPS\ESC-17000-17999\ESC-17569.idw

*latham*  
The Pool Company

TOLERANCES EXCEPT  
AS NOTED  
0/0 0.0 0.00 0.000 0'  
±1/8 ±0.25 ±0.0625 ±0.03125 ±1/2'

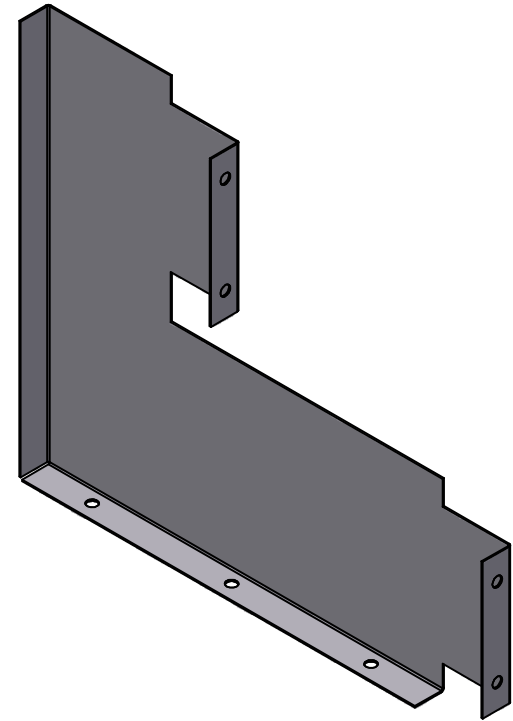
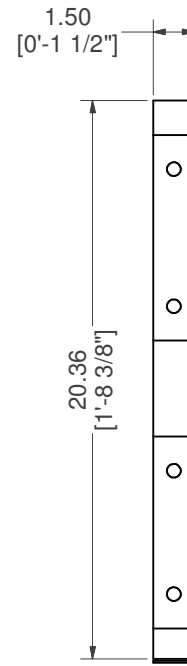
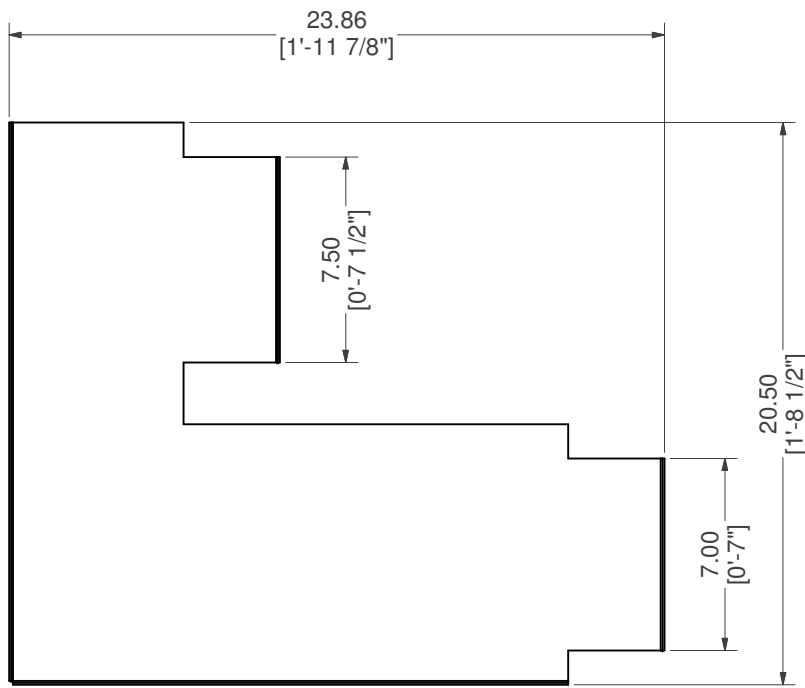
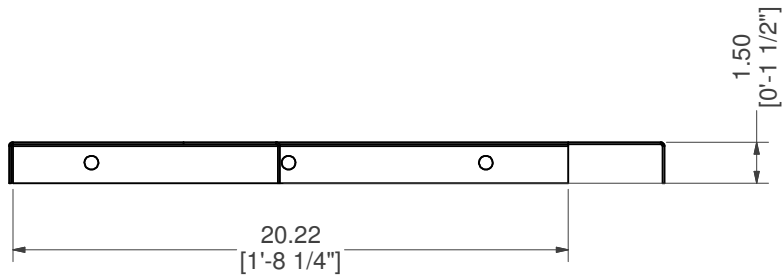
**MATERIAL:**  
14 GA. GALVANIZED

**DATE:** 9/8/2023


**NOTES:**

**DRAWN BY:** AK

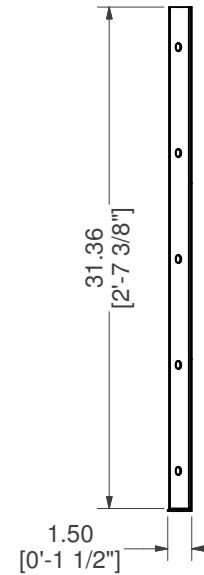
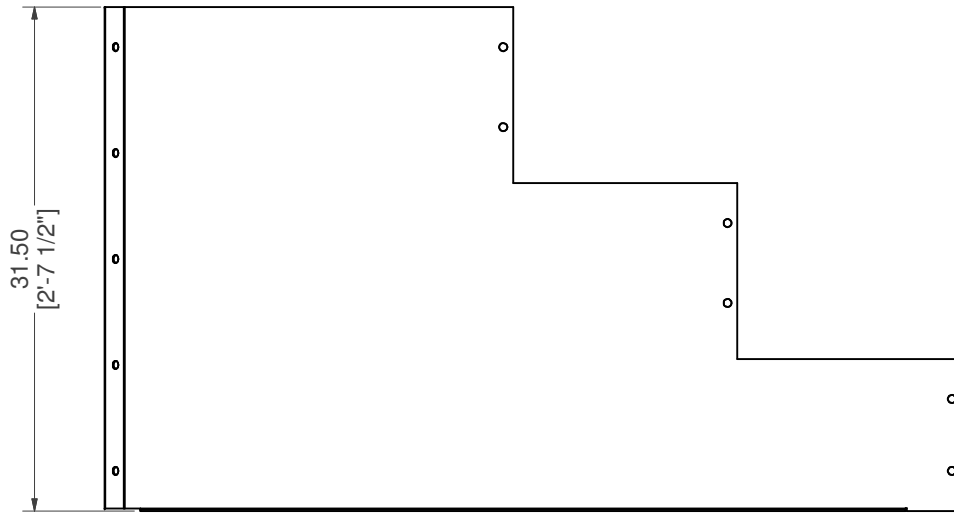
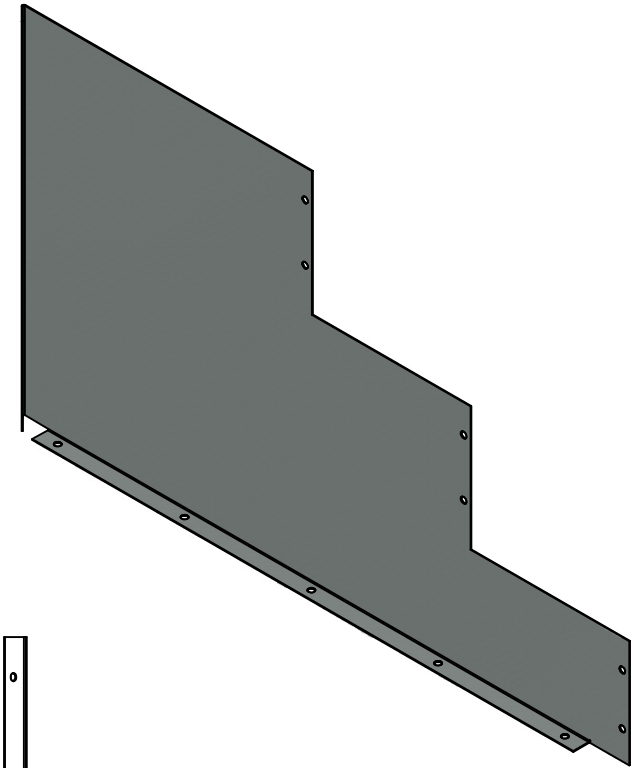
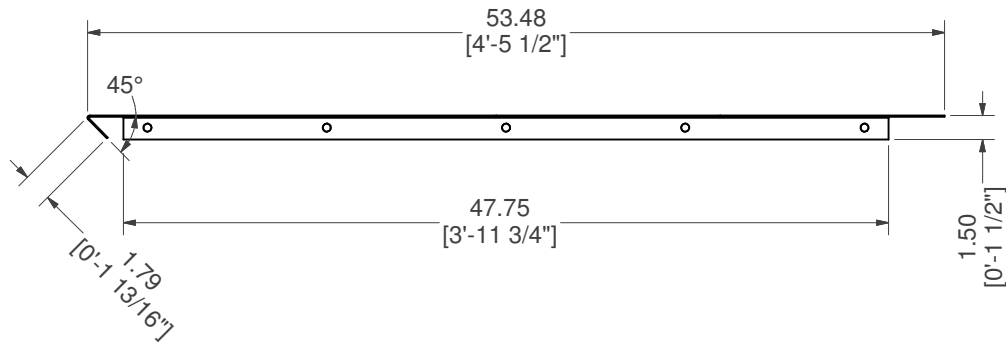
**SHEET:** 15 OF 23




# BRACE, 2- RISER SUPPORT

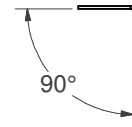
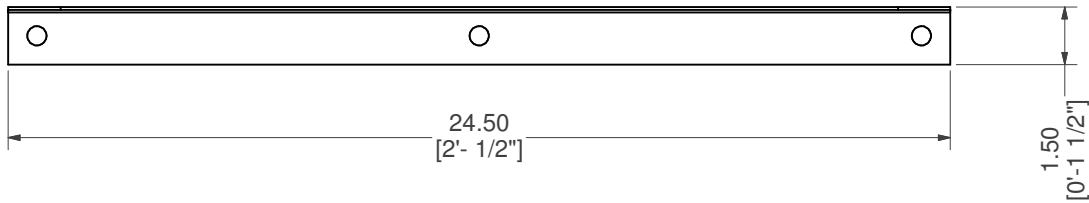
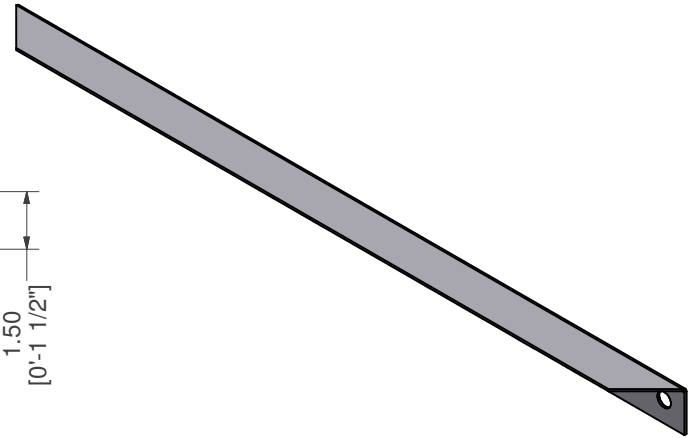
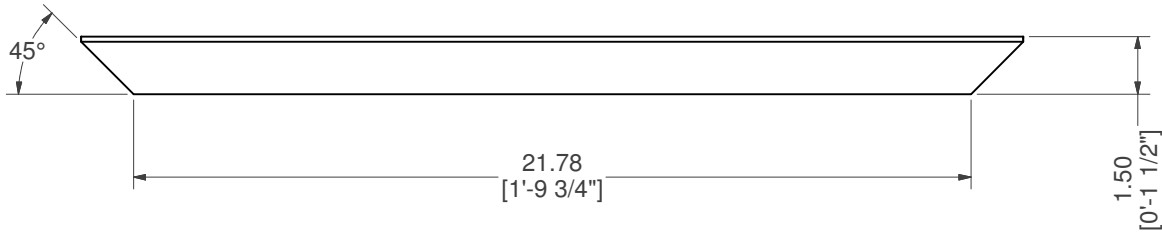
<b>PART #:</b> ESC-17260-CSB	<b>WEIGHT:</b> 7.90 lbmass	<b>MACHINE TIME:</b> N/A	<b>FILE/DIRECTORY:</b> C:\Vault\FTW\Design\CUSTOM STEPS\ESC-17000-17999\ESC-17569.idw
	TOLERANCES EXCEPT AS NOTED	<b>MATERIAL:</b> 14 GA. GALVANIZED	<b>DATE:</b> 9/8/2023
	0/0 0.0 0.00 0.000 0' ±1/8 ±0.25 ±0.0625 ±0.03125 ±1/2'	<b>DRAWN BY:</b> AK	<b>SHEET:</b> 16 OF 23






## BRACE, 3-RISER SUPPORT

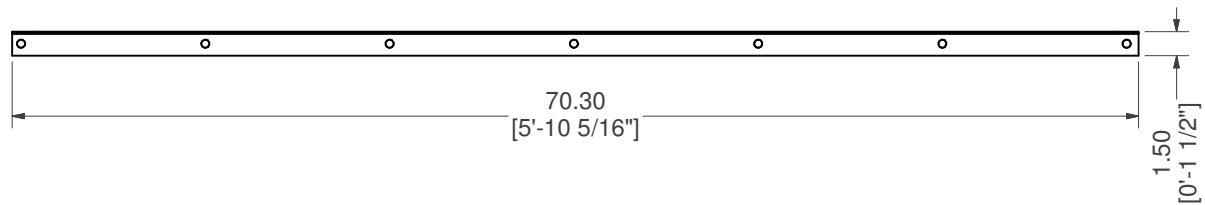
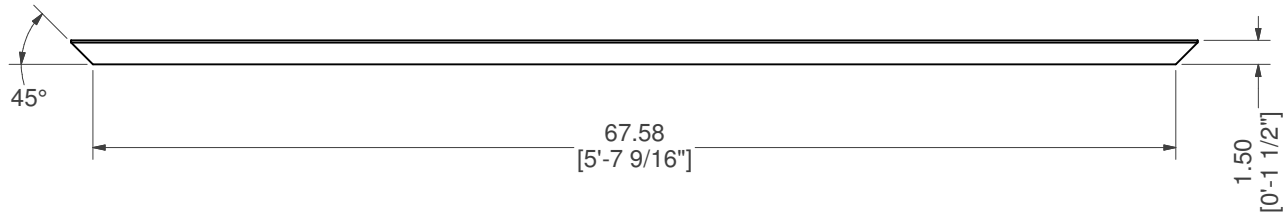
<b>PART #:</b> ESC-17569-B	<b>WEIGHT:</b> 27.25 lbmass	<b>MACHINE TIME:</b> N/A	<b>FILE/DIRECTORY:</b> C:\Vault\FTW\Design\CUSTOM STEPS\ESC-17000-17999\ESC-17569.idw
	TOLERANCES EXCEPT AS NOTED	<b>MATERIAL:</b> 14 GA. GALVANIZED	<b>DATE :</b> 9/8/2023
	0/0 0.0 0.00 0.000 0'	<b>DRAWN BY:</b> AK	<b>SHEET :</b> 17 OF 23
	±1/8 ±0.25 ±0.0625 ±0.03125 ±1/2'		<b>NOTES:</b>



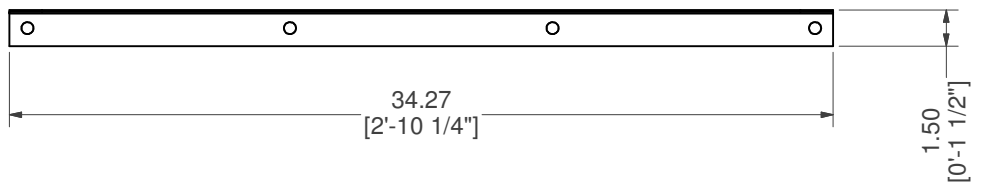
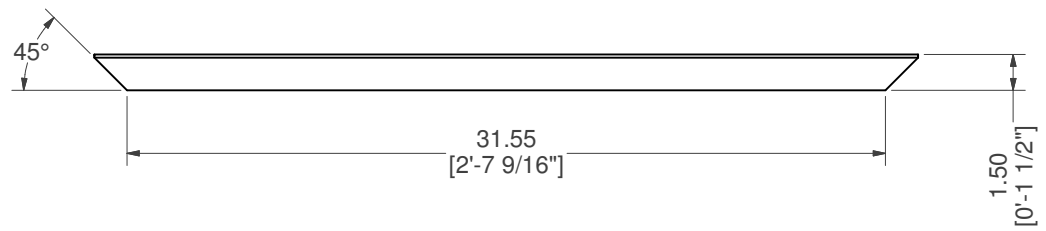
**ESC-17569-LV**

# STRAIGHT, LEVELER

<b>PART #:</b> ESC-17569-LV  	<b>WEIGHT:</b> 1.39 lbmass	<b>MACHINE TIME:</b> N/A	<b>FILE/DIRECTORY:</b> C:\Vault\FTW\Design\CUSTOM STEPS\ESC-17000-17999\ESC-17569.idw
	<b>TOLERANCES EXCEPT AS NOTED</b> 0/0 0.0 0.00 0.000 0' ±1/8 ±0.25 ±0.0625 ±0.03125 ±1/2'	<b>MATERIAL:</b> 14 GA. GALVANIZED	<b>DATE :</b> 9/8/2023
	<b>DRAWN BY:</b> AK	<b>SHEET :</b> 18 OF 23	




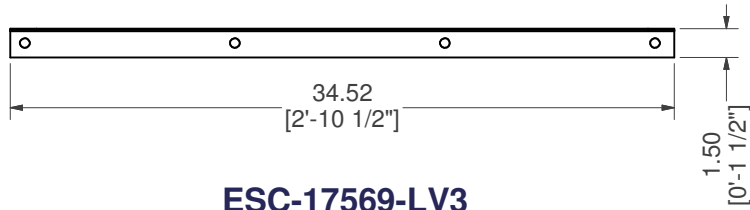
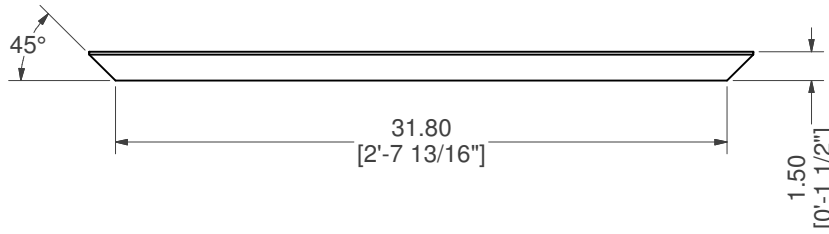
**ESC-17569-LV1**



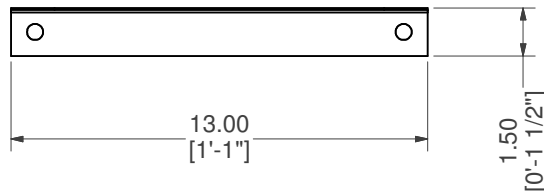
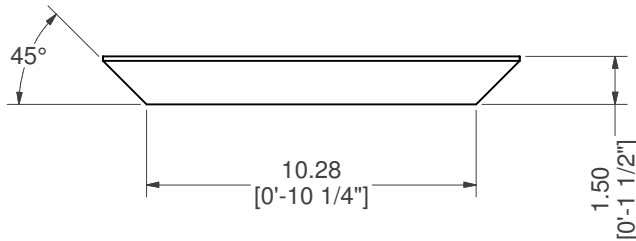
**ESC-17569-LV2**

# STRAIGHT, LEVELER 2

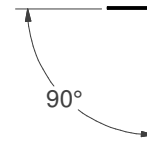
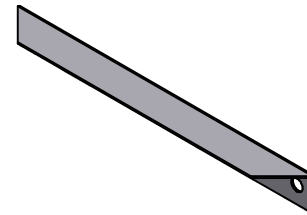
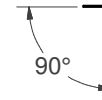
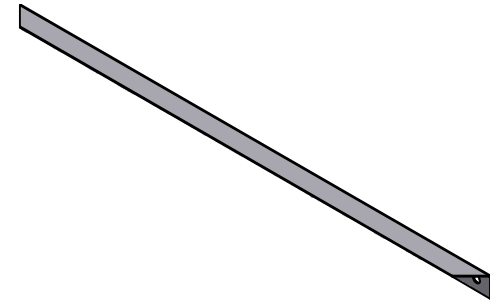
<b>PART #:</b> ESC-17569-LV2  	<b>WEIGHT:</b> 1.96 lbmass	<b>MACHINE TIME:</b> N/A	<b>FILE/DIRECTORY:</b> C:\Vault\FTW\Design\CUSTOM STEPS\ESC-17000-17999\ESC-17569.idw
	<b>TOLERANCES EXCEPT AS NOTED</b> 0/0 0.0 0.00 0.000 0' ±1/8 ±0.25 ±0.0625 ±0.03125 ±1/2'	<b>MATERIAL:</b> 14 GA. GALVANIZED	<b>DATE:</b> 9/8/2023
	<b>DRAWN BY:</b> AK	<b>SHEET:</b> 19 OF 23	




**ESC-17569-LV3**

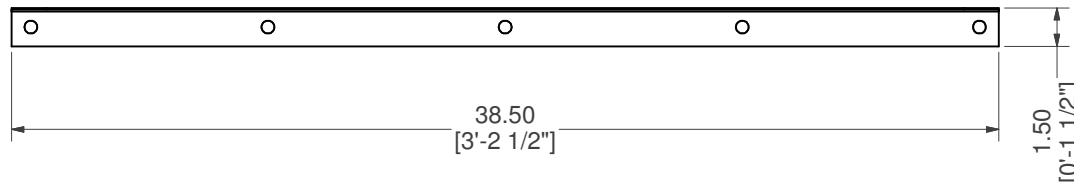
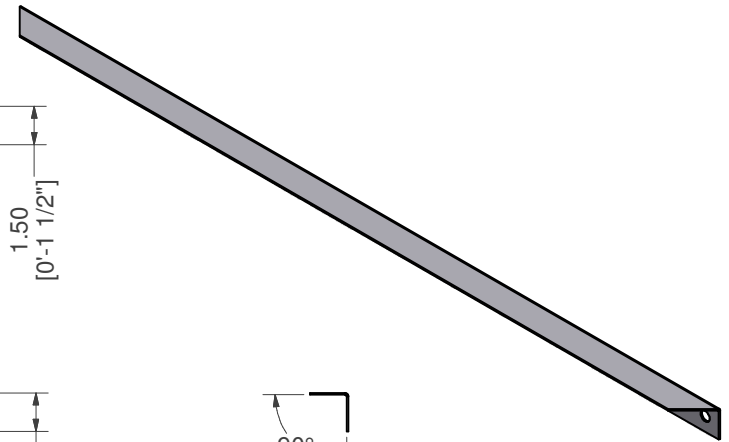
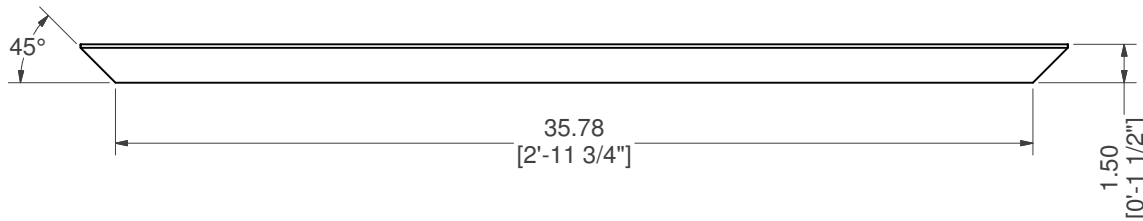


**ESC-17569-LV4**

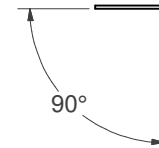
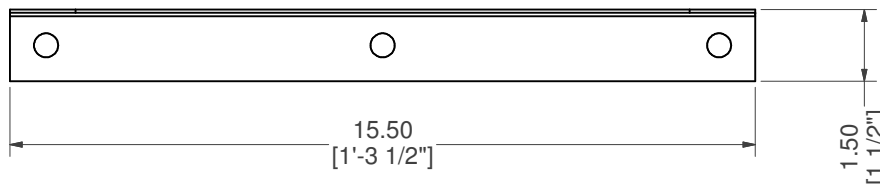
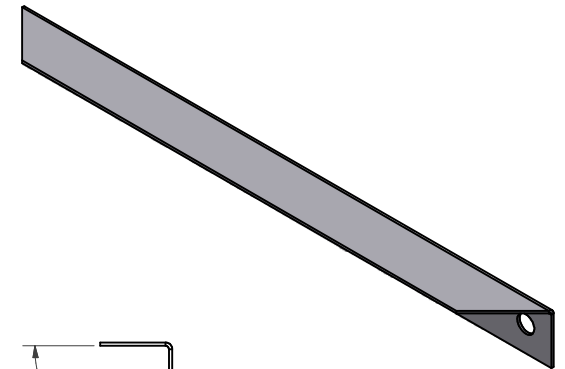
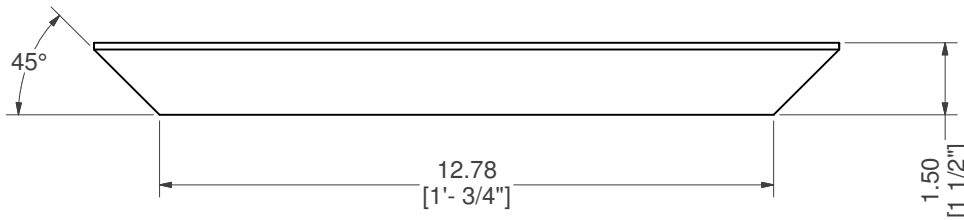


# STRAIGHT, LEVELER 4

<b>PART #:</b> ESC-17569-LV4  	<b>WEIGHT:</b> 0.72 lbmass	<b>MACHINE TIME:</b> N/A	<b>FILE/DIRECTORY:</b> C:\Vault\FTW\Design\CUSTOM STEPS\ESC-17000-17999\ESC-17569.idw
	<b>TOLERANCES EXCEPT AS NOTED</b> 0/0 0.0 0.00 0.000 0' ±1/8 ±0.25 ±0.0625 ±0.03125 ±1/2"	<b>MATERIAL:</b> 14 GA. GALVANIZED	<b>DATE :</b> 9/8/2023
<b>DRAWN BY:</b> AK	<b>SHEET :</b> 20 OF 23		




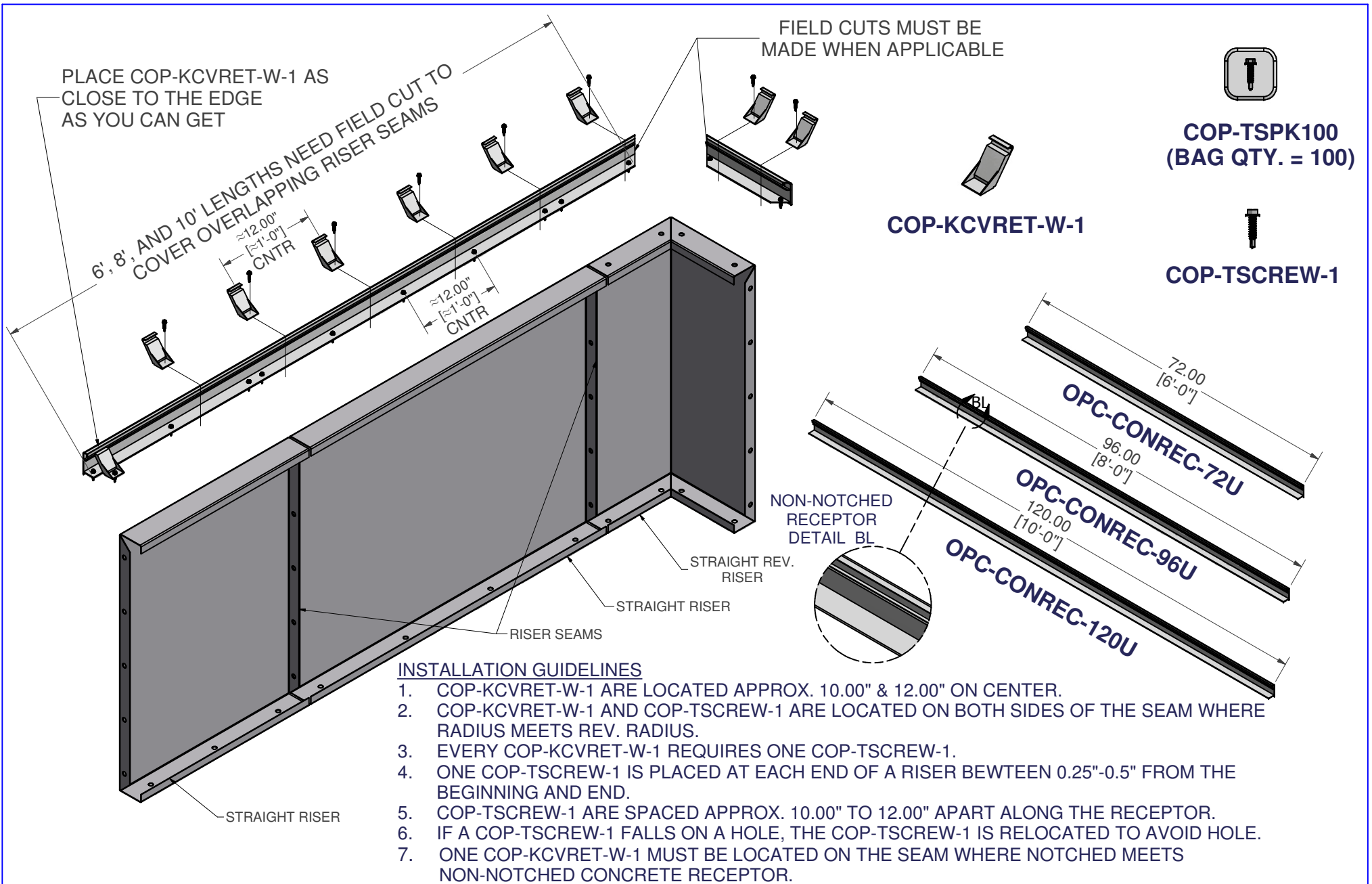
**ESC-17569-LV5**



**ESC-8849-LV 6**

# STRAIGHT, LEVELER 5

<b>PART #:</b> ESC-17569-LV5  	<b>WEIGHT:</b> 2.20 lbmass	<b>MACHINE TIME:</b> N/A	<b>FILE/DIRECTORY:</b> C:\Vault\FTW\Design\CUSTOM STEPS\ESC-17000-17999\ESC-17569.idw
	<b>TOLERANCES EXCEPT AS NOTED</b> 0/0 0.0 0.00 0.000 0' ±1/8 ±0.25 ±0.0625 ±0.03125 ±1/2'	<b>MATERIAL:</b> 14 GA. GALVANIZED	<b>DATE :</b> 9/8/2023
	<b>DRAWN BY:</b> AK	<b>SHEET :</b> 21 OF 23	



**INSTALLATION GUIDELINES**

1. COP-KCVRET-W-1 ARE LOCATED APPROX. 10.00" & 12.00" ON CENTER.
2. COP-KCVRET-W-1 AND COP-TSCREW-1 ARE LOCATED ON BOTH SIDES OF THE SEAM WHERE RADIUS MEETS REV. RADIUS.
3. EVERY COP-KCVRET-W-1 REQUIRES ONE COP-TSCREW-1.
4. ONE COP-TSCREW-1 IS PLACED AT EACH END OF A RISER BETWEEN 0.25"-0.5" FROM THE BEGINNING AND END.
5. COP-TSCREW-1 ARE SPACED APPROX. 10.00" TO 12.00" APART ALONG THE RECEPTOR.
6. IF A COP-TSCREW-1 FALLS ON A HOLE, THE COP-TSCREW-1 IS RELOCATED TO AVOID HOLE.
7. ONE COP-KCVRET-W-1 MUST BE LOCATED ON THE SEAM WHERE NOTCHED MEETS NON-NOTCHED CONCRETE RECEPTOR.

**NON-NOTCHED CONCRETE RECEPTOR FIELD INSTALLATION**

<b>PART #:</b> STRAIGHT CONCRETE RECEPTOR 	<b>WEIGHT:</b> 77.51 lbmass	<b>MACHINE TIME:</b> N/A	<b>FILE/DIRECTORY:</b> C:\Vault\FTW\Design\CUSTOM STEPS\ESC-17000-17999\ESC-17569.idw
	<b>TOLERANCES EXCEPT AS NOTED</b> 0/0 0.0 0.00 0.000 0' ±1/8 ±0.25 ±0.0625 ±0.03125 ±1/2"	<b>MATERIAL:</b>	<b>DATE:</b> 9/8/2023
<b>DRAWN BY:</b> AK	<b>SHEET:</b> 22 OF 23		

PLACE COP-KCVRET-W-1 AT SEAMS WHERE STRAIGHT MEETS A RADIUS/REV. RADIUS.

PLACE COP-TSCREW-1 ON BOTH SIDES OF THE SEAMS.

PLACE COP-KCVRET-W-1 AS CLOSE TO THE END EDGE AS YOU CAN GET.

FIELD CUTS MUST BE MADE WHEN APPLICABLE

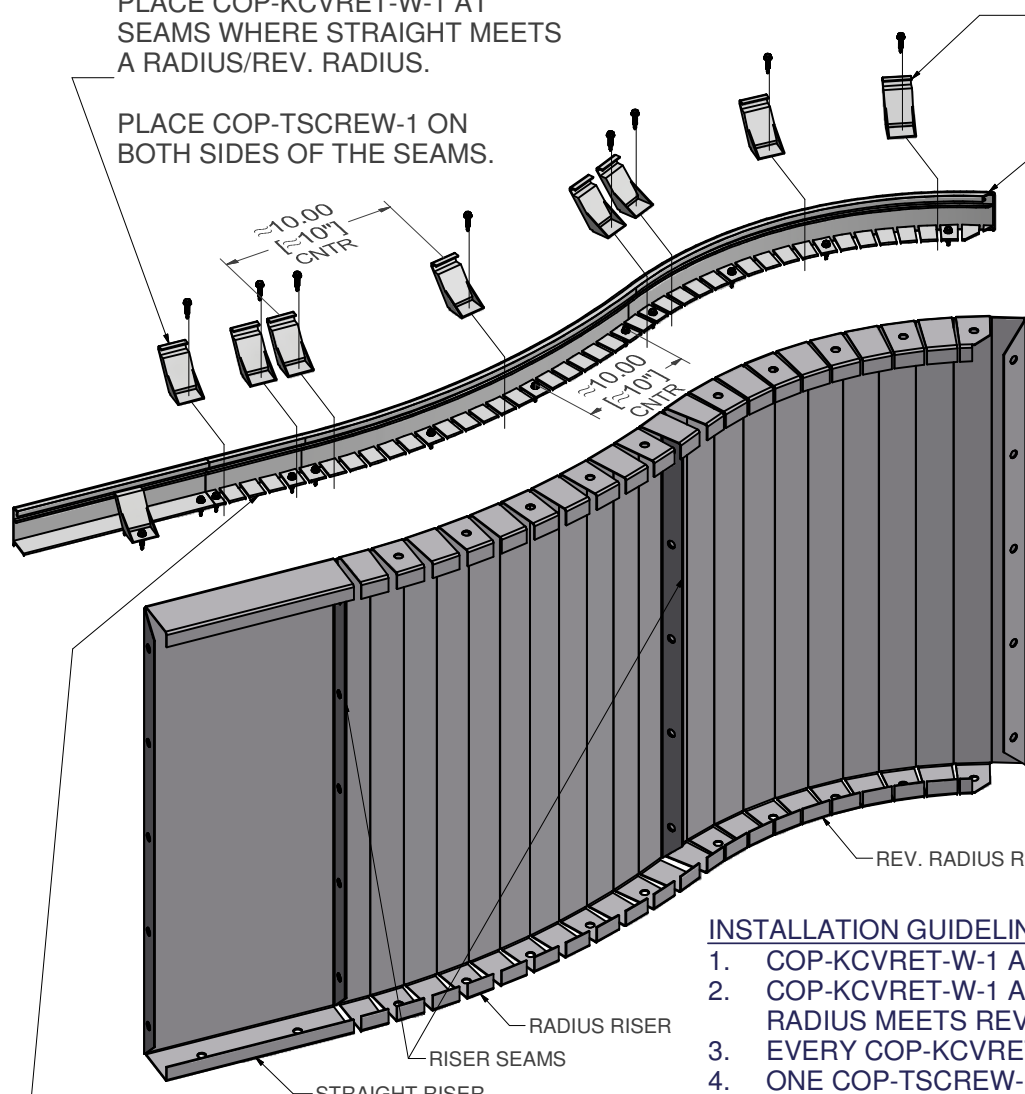


**COP-TSPK100**  
(BAG QTY. = 100)

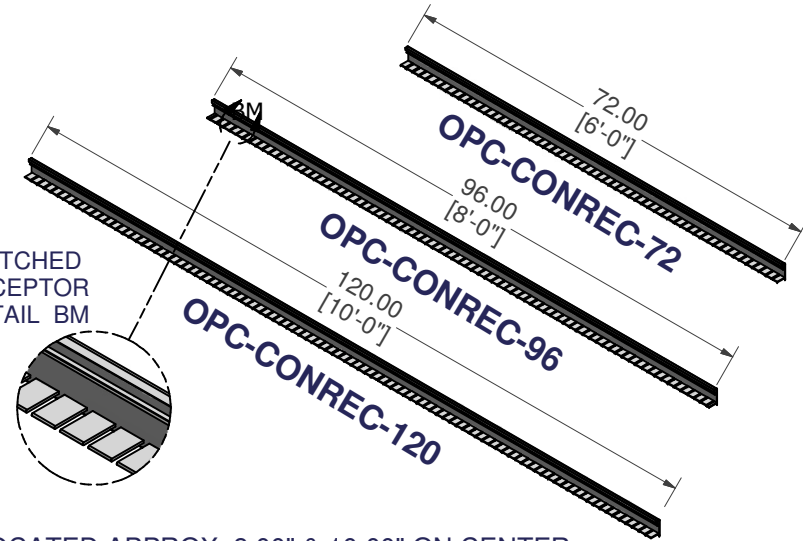


**COP-TSCREW-1**

**COP-KCVRET-W-1**



NOTCHED RECEPTOR DETAIL BM



ALLOW AN APPROX. OF 6.00" OF OVERLAP GOING FROM RADIUS/ REV. RADIUS TO A STRAIGHT RISER.

**INSTALLATION GUIDELINES**

1. COP-KCVRET-W-1 ARE LOCATED APPROX. 8.00" & 10.00" ON CENTER.
2. COP-KCVRET-W-1 AND COP-TSCREW-1 ARE LOCATED ON BOTH SIDES OF THE SEAM WHERE RADIUS MEETS REV. RADIUS.
3. EVERY COP-KCVRET-W-1 REQUIRES ONE COP-TSCREW-1.
4. ONE COP-TSCREW-1 IS PLACED AT EACH END OF A RISER BETWEEN 0.25"-0.5" FROM THE BEGINNING AND END.
5. COP-TSCREW-1 ARE SPACED APPROX. 8.00" TO 10.00" APART ALONG THE RECEPTOR.
6. IF A COP-TSCREW-1 FALLS ON A HOLE, THE COP-TSCREW-1 IS RELOCATED TO AVOID HOLE.
7. ONE COP-KCVRET-W-1 MUST BE LOCATED ON THE SEAM WHERE NOTCHED MEETS NON-NOTCHED CONCRETE RECEPTOR.

# NOTCHED CONCRETE RECEPTOR FIELD INSTALLATION

**PART #:** REV-RADIUS CONCRETE RECEPTOR

**WEIGHT:**  
52.49 lbmass

**MACHINE TIME:**  
N/A

**FILE/DIRECTORY:**

C:\Vault\FTW\Design\CUSTOM STEPS\ESC-17000-17999\ESC-17569.idw



TOLERANCES EXCEPT AS NOTED  
0/0 0.0 0.00 0.000 0'  
±1/8 ±0.25 ±0.0625 ±0.03125 ±1/2"

**MATERIAL:**

**DATE:** 9/8/2023

**NOTES:**

**DRAWN BY:** AK

**SHEET:** 23 OF 23