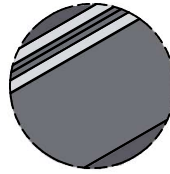
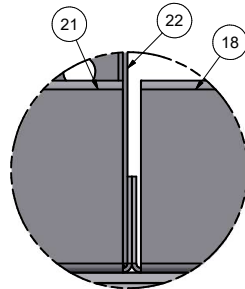


Parts List			
ITEM	QTY	PART NUMBER	DESCRIPTION
1	6	48-Z-RIB	48" Z-RIB
2	55	COP-KCVRET-W-1	COP COPING STIFFNER 1 5/8"-1PC
3	3	ESC-8029-TMRS	BRACE, TOP MIDDLE RISER SUPPORT
4	4	ESC-9545-BUB	BRACE, SUNLEDGE RISER ANGLE SUPPORT
5	1	ESC-9625-BR	STRAIGHT, BOTTOM RISER
6	3	ESC-12913-DS	BRACE, DRIVE STAKE CHANNEL SET
7	1	ESC-12913-SML	REV RAD, SUNLEDGE RISER, MIDDLE, LEFT
8	1	ESC-12913-SRL	REV RAD, SUNLEDGE RISER, LEFT
9	1	ESC-12913-SRM	RADIUS, SUNLEDGE RISER, MIDDLE
10	1	ESC-12913-SRR	RADIUS, SUNLEDGE RISER, RIGHT
11	4	ESC-12913-SRS	BRACE, SUNLEDGE RISER SUPPORT
12	2	ESC-17295-MR	STRAIGHT, MIDDLE RISER
13	1	ESC-17295-SRE	STRAIGHT, SUNLEDGE RISER, END
14	1	ESC-17295-TRSR	BRACE, TOP RISER SUPPORT, RIGHT
15	1	ESC-17687-BWL	STRAIGHT, BACK WALL, LEFT
16	2	ESC-17687-BWR	STRAIGHT, BACK WALL, RIGHT
17	1	ESC-17687-CSB	BRACE, 3-RISER SUPPORT
18	1	ESC-17687-SRTR	STR REV, TOP RISER
19	1	ESC-17687-SWL	STRAIGHT, SIDE WALL, LEFT
20	1	ESC-17687-SWR	STRAIGHT, SIDE WALL, RIGHT
21	1	ESC-17687-TR	STRAIGHT, TOP RISER
22	1	ESC-17687-TRB	BRACE, TOP RISER
23	1	ESC-17687-TRR	STRAIGHT, TOP RISER, RIGHT
24	2	IPC-AB90-48	2.5" X 2.5" X 47.75" X 90 DEG OPN CORNER BRACE
25	15'	OPC-CONREC-XX	NOTCHED CONCRETE RECEPTOR
26	28'	OPC-CONREC-XXU	UN-NOTCHED CONCRETE RECEPTOR
27	46'	SSC-1099-PFT	STEEL STEP PVC BEAD RETAINER (PER FT)

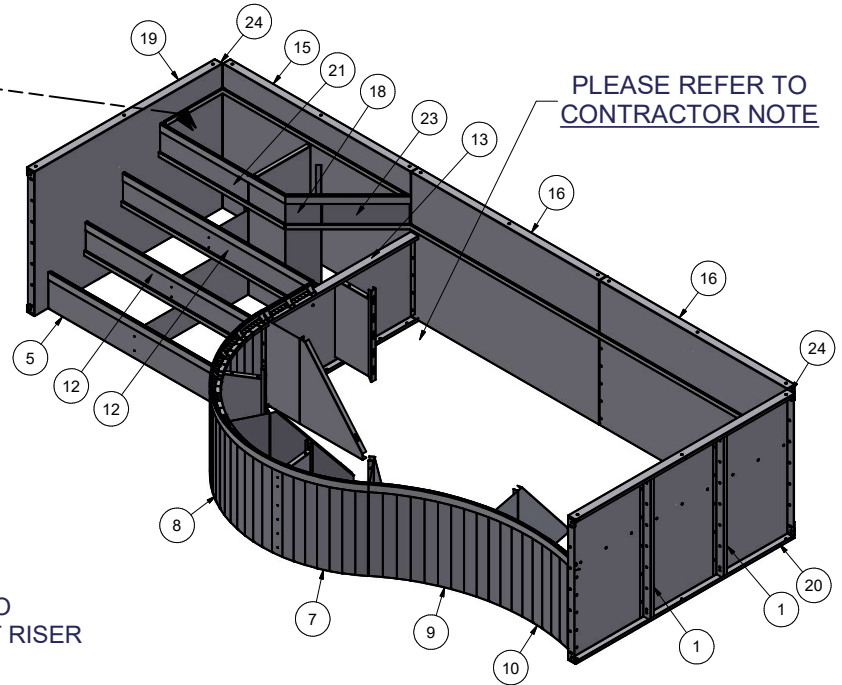
**NOTE: INCLUDE (2) PVC 6" RADIUS INSERTS WITH THIS STEP/ SUNLEDGE FOR CORNERS, 8" & 17.25" LONG.**



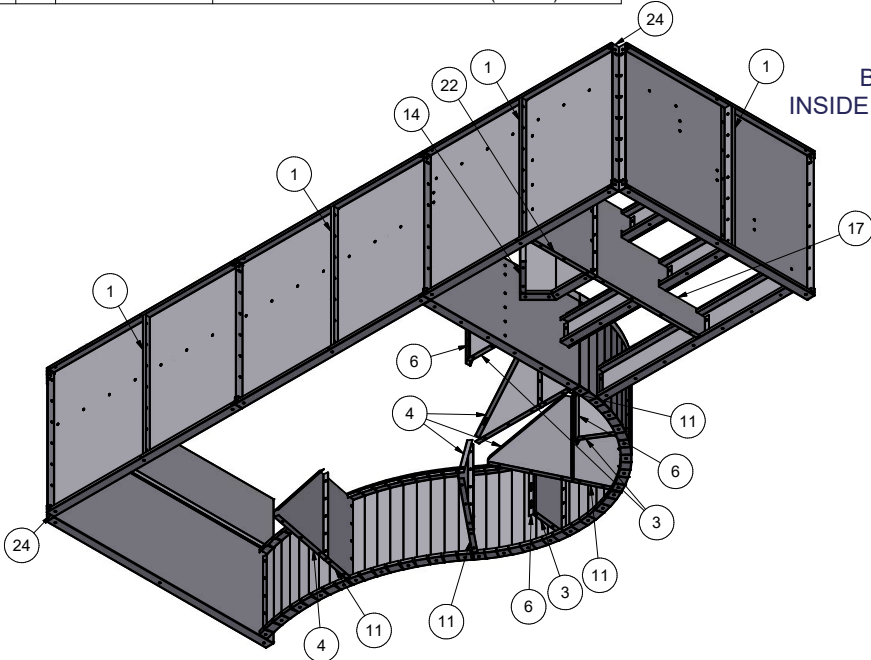
**BEAD RECEIVER DETAIL**



**TOP VIEW  
BRACE CONNECTED TO  
INSIDE FLANGE OF THE LEFT RISER**



**PLEASE REFER TO  
CONTRACTOR NOTE**



**CONTRACTOR NOTE:**

CONTRACTOR IS RESPONSIBLE FOR SECURING ALL RISERS INTO PLACE WITH REBAR HOLES BEFORE BACKFILLING THIS CUSTOM STEP

KEEP BEAD RECEIVER ATTACHED TO THE RISERS AND WALL PANELS FOR SHIPPING. A TOTAL OF 552" (46') OF BEAD RECEIVER IS REQUIRED.

**CONTRACTOR MUST FIELD FIT ALL CONCRETE RECEPTOR.**

TOTALS REQUIRED FOR THIS CUSTOM PRODUCT APPLICATION.

OPC-CONREC-XX (NOTCHED) = 180" (15')

OPC-CONREC-XXU (UN-NOTCHED) = 336" (28')

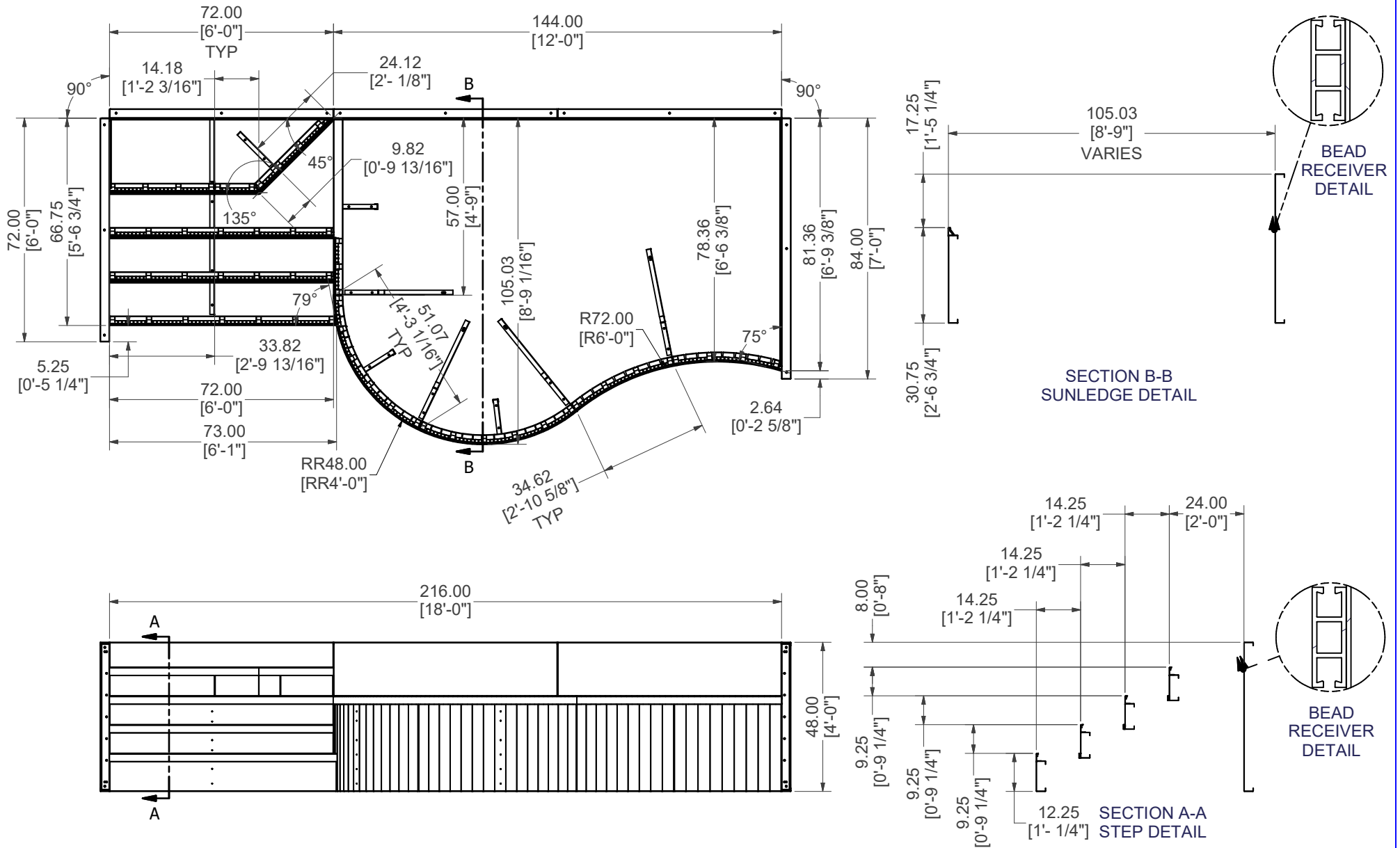
COP-KCVRET-W-1 (STIFFENER) = 55

**CONTRACTOR NOTE:**


BACK FILL STEP/ SUNLEDGE AREA WITH COMPACTED EARTH MATERIAL. FINISH STEP/ SUNLEDGE AREA WITH 2" OF HARDEN FLOOR MATERIAL TO MATCH REQUIRED DEPTH (FLUSH WITH TOP OF BEAD RECEIVER).

# 18' X 7' X 90° CRN OPEN TOP STEP W/ WAVE TREADS RIGHT

<b>PART #:</b> ESC-17687  	<b>WEIGHT:</b> 955.01 lbmass	<b>MACHINE TIME:</b> N/A	<b>FILE/DIRECTORY:</b> C:\Vault\FTWDesign\CUSTOM STEPS\ESC-17000-17999\ESC-17687.idw
	<b>TOLERANCES EXCEPT AS NOTED</b> 0/0 0.0 0.00 0.000 0' ±1/8 ±0.25 ±0.0625 ±0.03125 ±1/2"	<b>MATERIAL:</b>  <b>DRAWN BY:</b> SG	<b>DATE:</b> 9/28/2023  <b>SHEET:</b> 1 OF 25

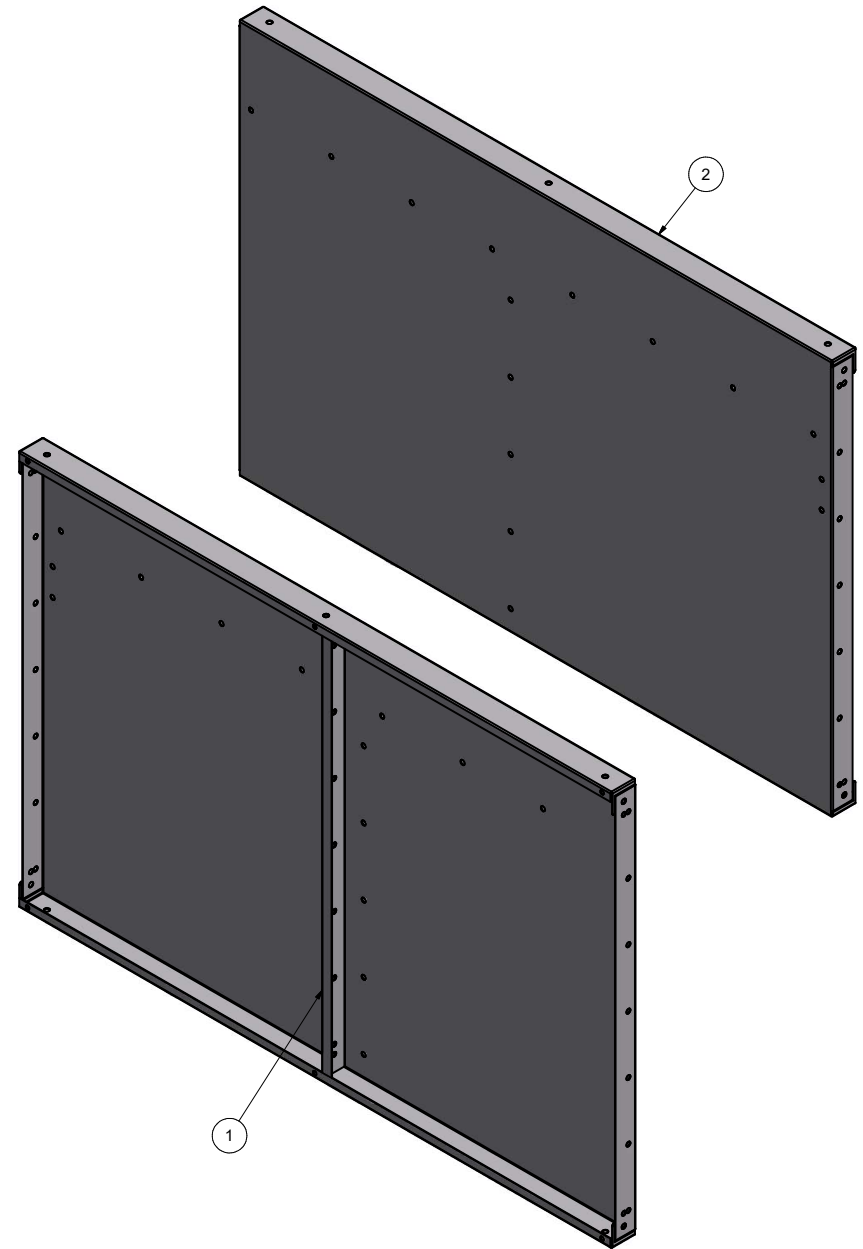
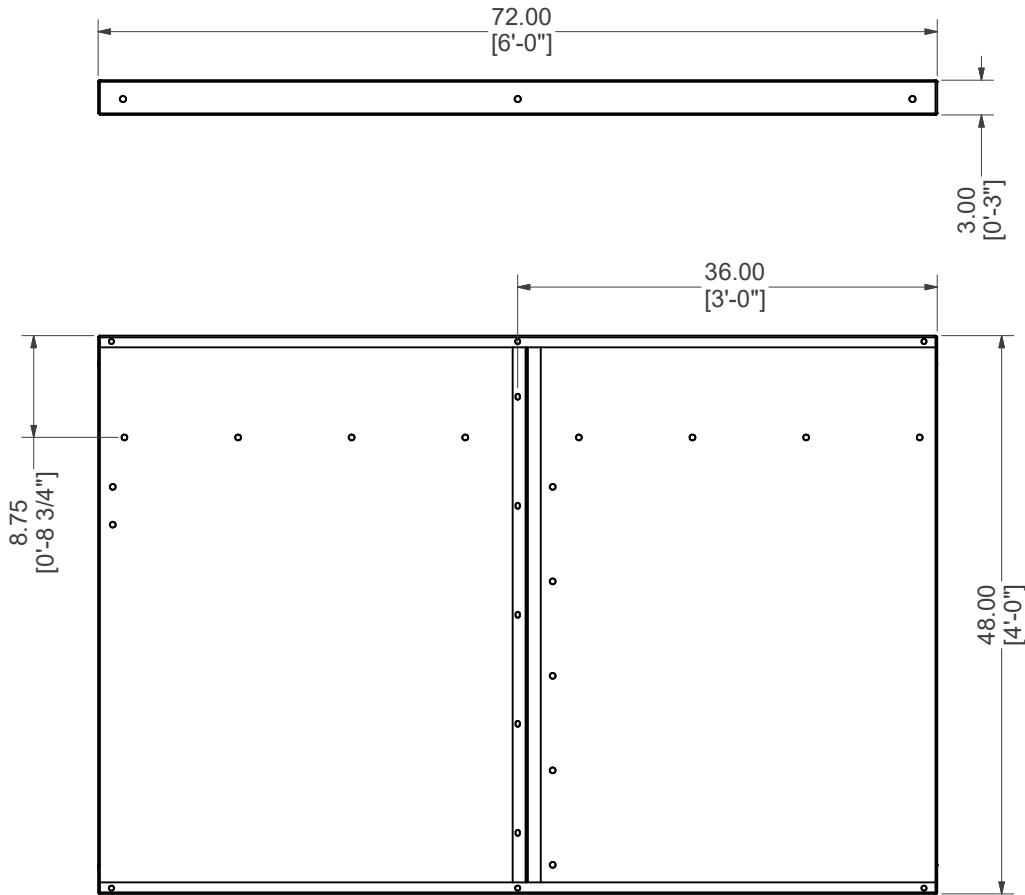


# 18' X 7' X 90° CRN OPEN TOP STEP W/ WAVE TREADS RIGHT


<b>PART #:</b> ESC-17687 	<b>WEIGHT:</b> 955.01 lbmass	<b>MACHINE TIME:</b> N/A	<b>FILE/DIRECTORY:</b> C:\Vault\FTWDesign\CUSTOM STEPS\ESC-17000-17999\ESC-17687.idw
	<b>TOLERANCES EXCEPT AS NOTED</b> 0/0 0.0 0.00 0.000 0' ±1/8 ±0.25 ±0.0625 ±0.03125 ±1/2"	<b>MATERIAL:</b>  <b>DRAWN BY:</b> SG	<b>DATE:</b> 9/28/2023 <b>SHEET:</b> 2 OF 25

Parts List			
ITEM	QTY	PART NUMBER	DESCRIPTION
1	1	48-Z-RIB	48" Z-RIB
2	1	ESC-17687-BWL	STRAIGHT, BACK WALL, LEFT

# WELDCODE 22

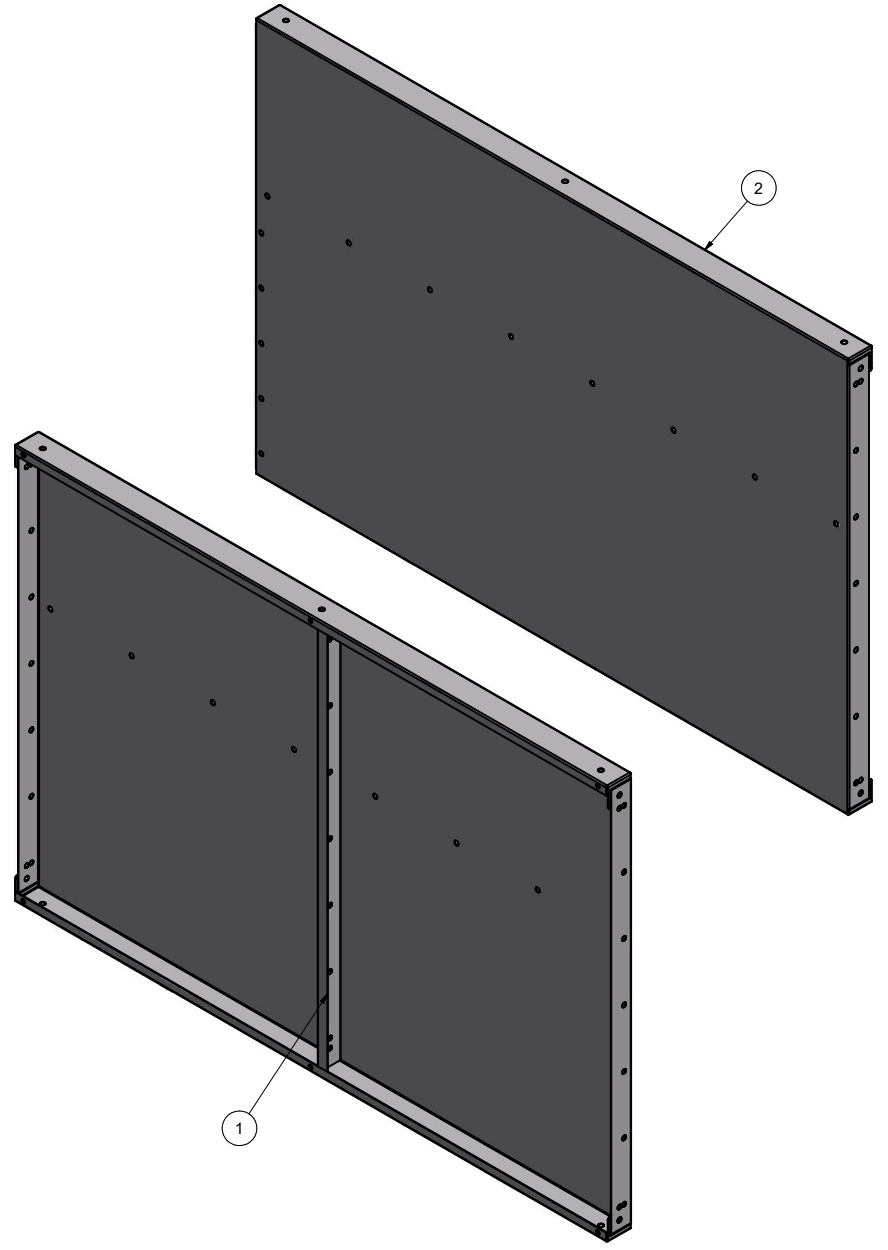
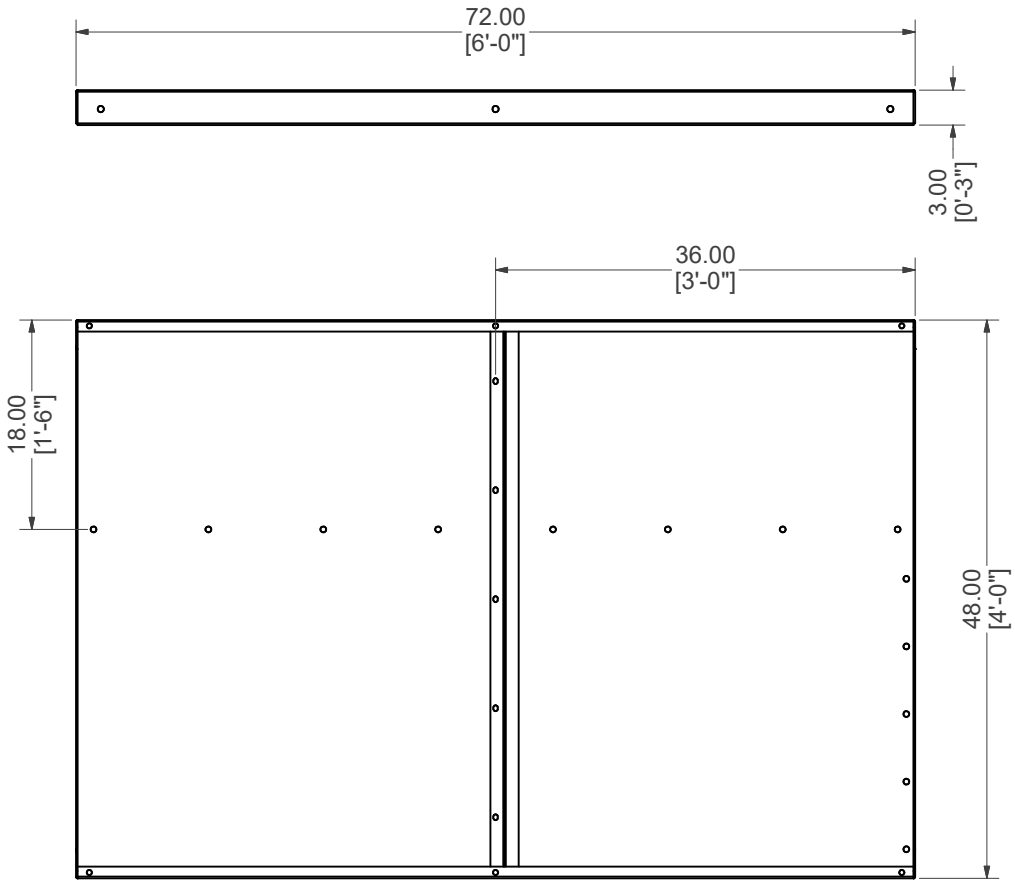


## STRAIGHT, BACK WALL, LEFT W/ Z-RIBS

<b>PART #:</b> ESC-17687-BWL 	<b>WEIGHT:</b> 90.60 lbmass	<b>MACHINE TIME:</b> N/A	<b>FILE/DIRECTORY:</b> C:\Vault\FTWDesign\CUSTOM STEPS\ESC-17000-17999\ESC-17687.idw
	<b>TOLERANCES EXCEPT AS NOTED</b> 0/0 0.0 0.00 0.000 0' ±1/8 ±0.25 ±0.0625 ±0.03125 ±1/2'	<b>MATERIAL:</b>  <b>DRAWN BY:</b> SG	<b>DATE:</b> 9/28/2023 <b>SHEET:</b> 3 OF 25

Parts List			
ITEM	QTY	PART NUMBER	DESCRIPTION
1	1	48-Z-RIB	48" Z-RIB
2	1	ESC-17687-BWR	STRAIGHT, BACK WALL, RIGHT

# WELDCODE #22

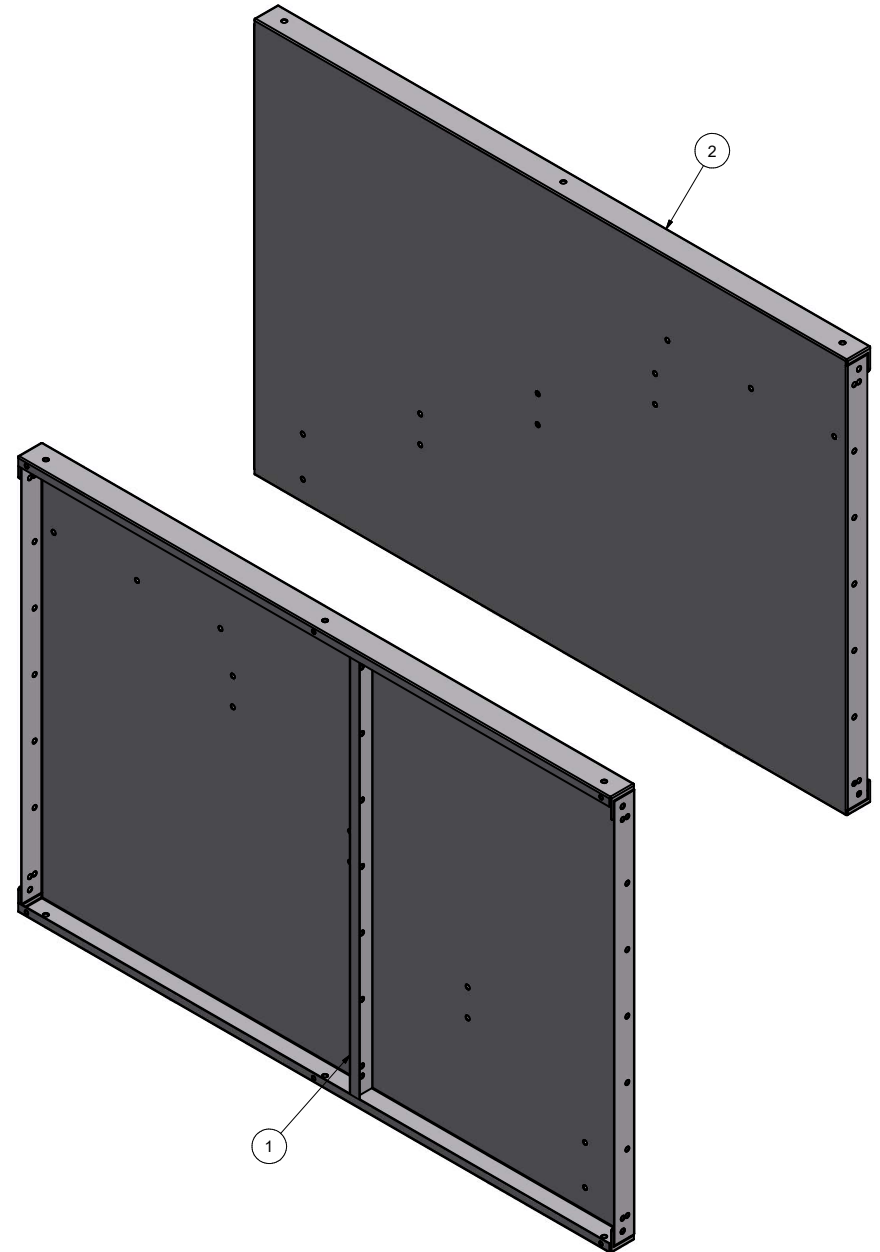
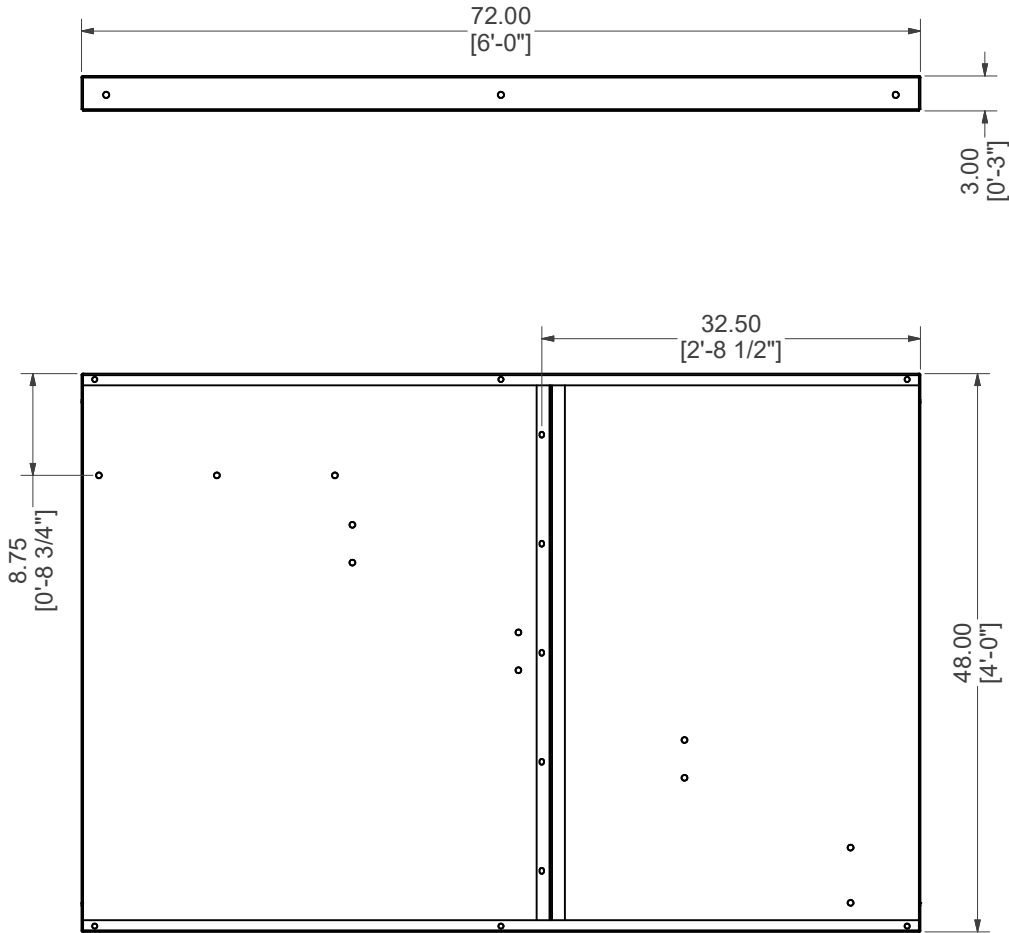


## STRAIGHT, BACK WALL, RIGHT W/ Z-RIBS

<b>PART #:</b> ESC-17687-BWR 	<b>WEIGHT:</b> 90.61 lbmass	<b>MACHINE TIME:</b> N/A	<b>FILE/DIRECTORY:</b> C:\Vault\FTWDesign\CUSTOM STEPS\ESC-17000-17999\ESC-17687.idw
	<b>TOLERANCES EXCEPT AS NOTED</b> 0/0 0.0 0.00 0.000 0' ±1/8 ±0.25 ±0.0625 ±0.03125 ±1/2'	<b>MATERIAL:</b>  <b>DRAWN BY:</b> SG	<b>DATE:</b> 9/28/2023 <b>SHEET:</b> 4 OF 25

Parts List			
ITEM	QTY	PART NUMBER	DESCRIPTION
1	1	48-Z-RIB	48" Z-RIB
2	1	ESC-17687-SWL	STRAIGHT, SIDE WALL, LEFT

# WELDCODE #23

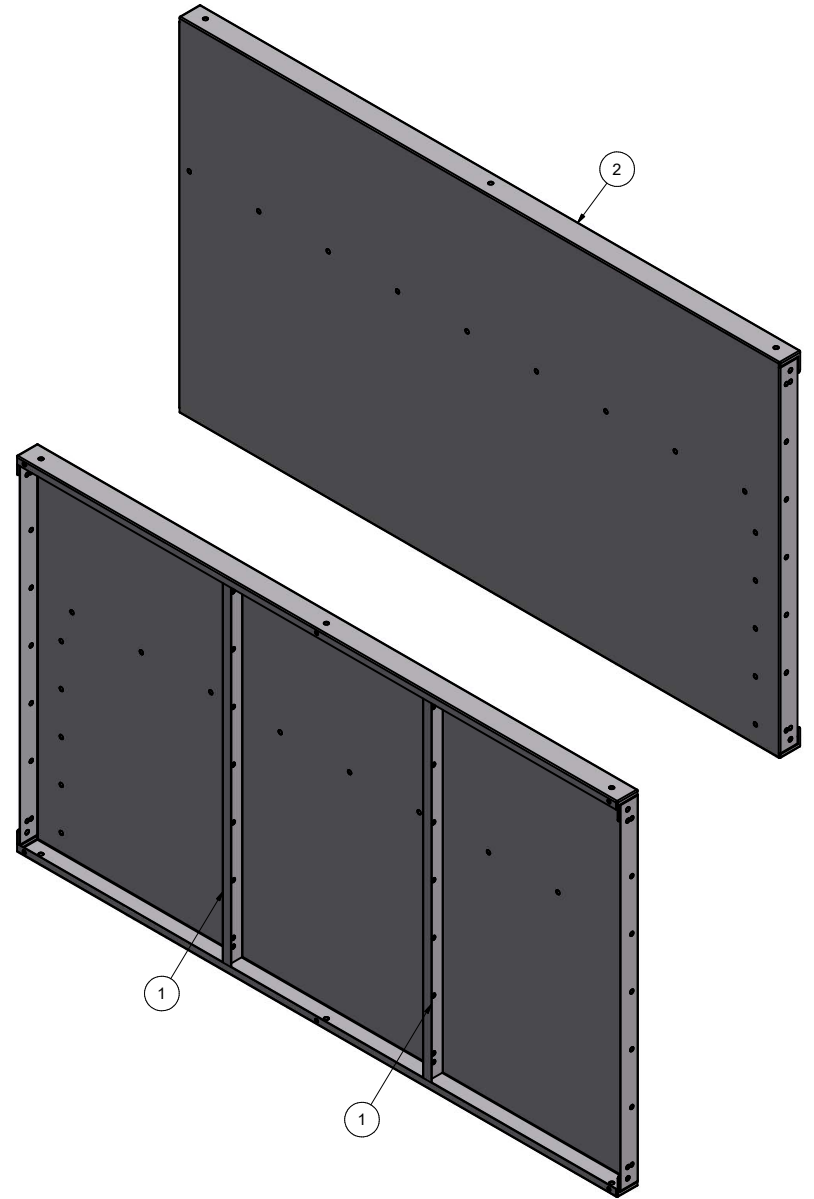
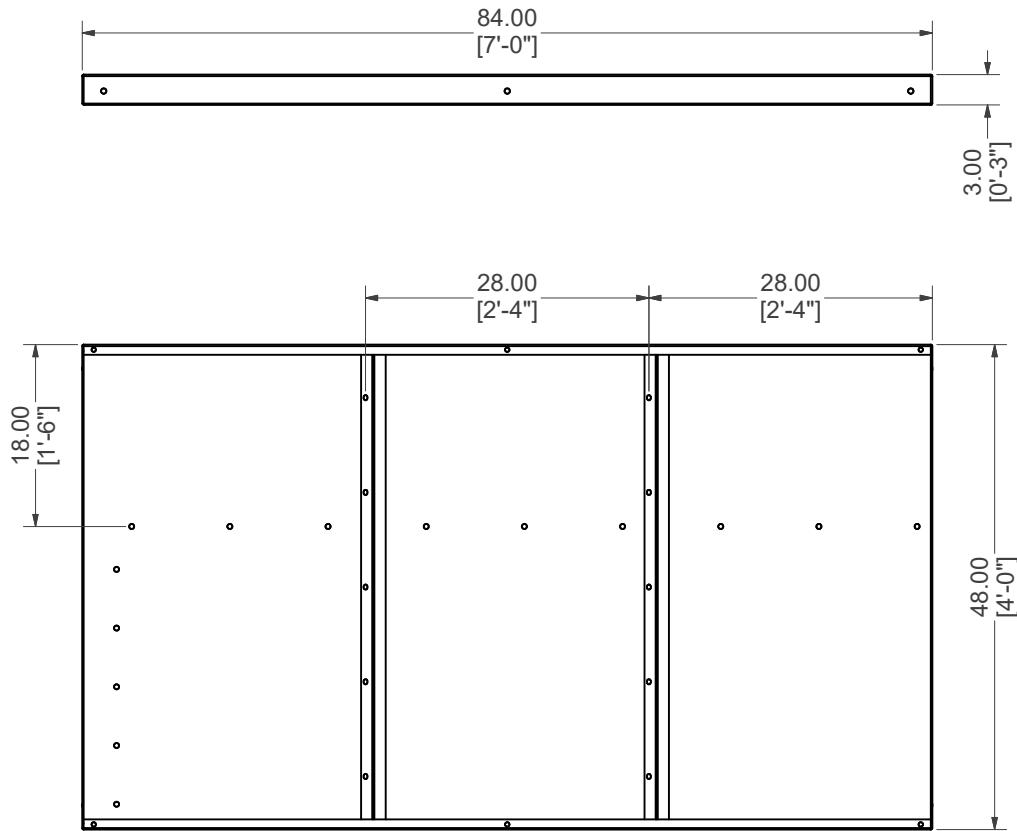


## STRAIGHT, SIDE WALL, LEFT W/ Z-RIBS


<b>PART #:</b> ESC-17687-SWL 	<b>WEIGHT:</b> 90.62 lbmass	<b>MACHINE TIME:</b> N/A	<b>FILE/DIRECTORY:</b> C:\Vault\FTWDesign\CUSTOM STEPS\ESC-17000-17999\ESC-17687.idw
	<b>TOLERANCES EXCEPT AS NOTED</b> 0/0 0.0 0.00 0.000 0' ±1/8 ±0.25 ±0.0625 ±0.03125 ±1/2'	<b>MATERIAL:</b>  <b>DRAWN BY:</b> SG	<b>DATE:</b> 9/28/2023 <b>SHEET:</b> 5 OF 25

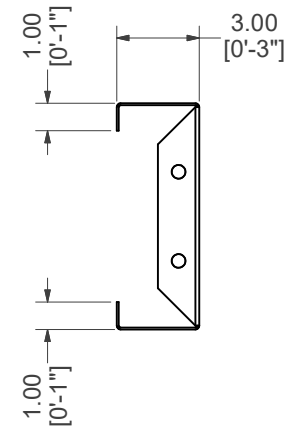
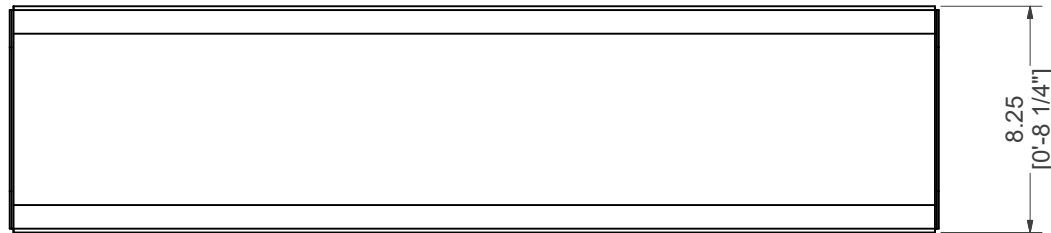
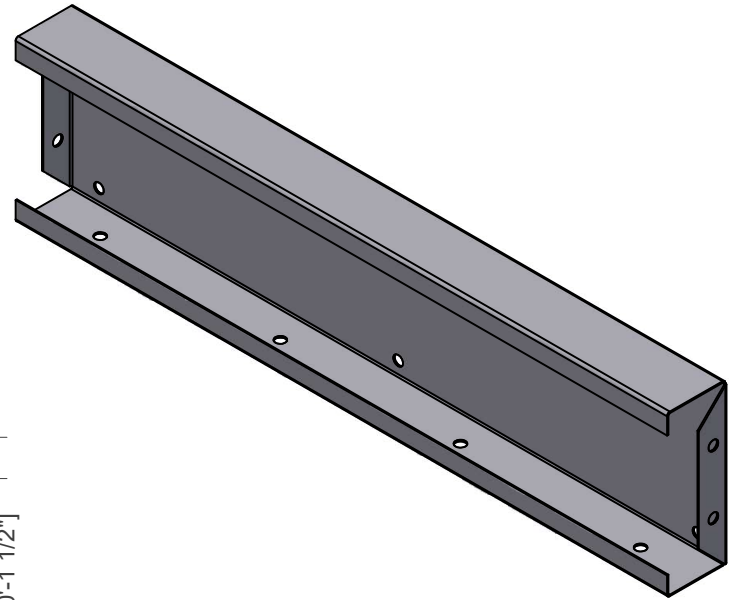
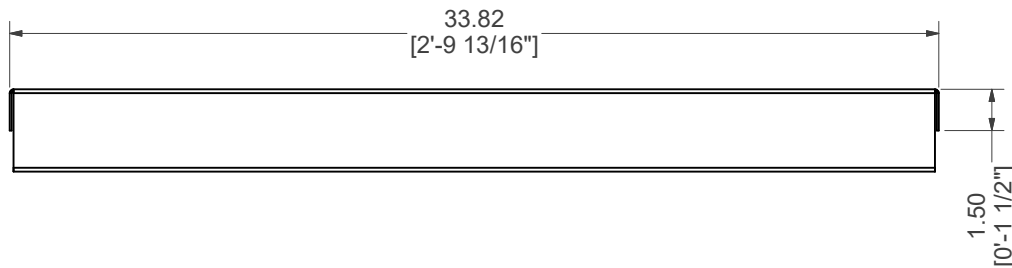
Parts List			
ITEM	QTY	PART NUMBER	DESCRIPTION
1	2	48-Z-RIB	48" Z-RIB
2	1	ESC-17687-SWR	STRAIGHT, SIDE WALL, RIGHT

# WELDCODE #46



## STRAIGHT, SIDE WALL, RIGHT W/ Z-RIBS

<b>PART #:</b> ESC-17687-SWR 	<b>WEIGHT:</b> 109.07 lbmass	<b>MACHINE TIME:</b> N/A	<b>FILE/DIRECTORY:</b> C:\Vault\FTWDesign\CUSTOM STEPS\ESC-17000-17999\ESC-17687.idw
	<b>TOLERANCES EXCEPT AS NOTED</b> 0/0 0.0 0.00 0.000 0' ±1/8 ±0.25 ±0.0625 ±0.03125 ±1/2'	<b>MATERIAL:</b>  <b>DRAWN BY:</b> SG	<b>DATE :</b> 9/28/2023  <b>SHEET :</b> 6 OF 25



## STRAIGHT, TOP RISER

**PART #:** ESC-17687-TR

**WEIGHT:**  
11.13 lbmass

**MACHINE TIME:**  
N/A

**FILE/DIRECTORY:**

C:\Vault\FTWDesign\CUSTOM STEPS\ESC-17000-17999\ESC-17687.idw

*latham*  
The Pool Company

TOLERANCES EXCEPT  
AS NOTED

0/0 0.0 0.00 0.000 0'  
±1/8 ±0.25 ±0.0625 ±0.03125 ±1/2'

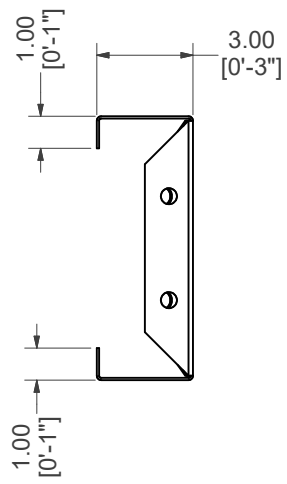
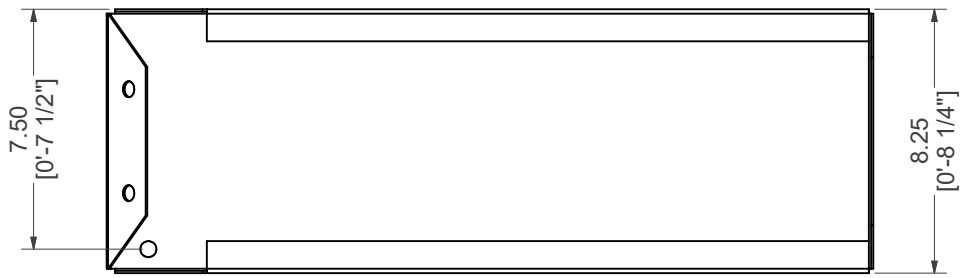
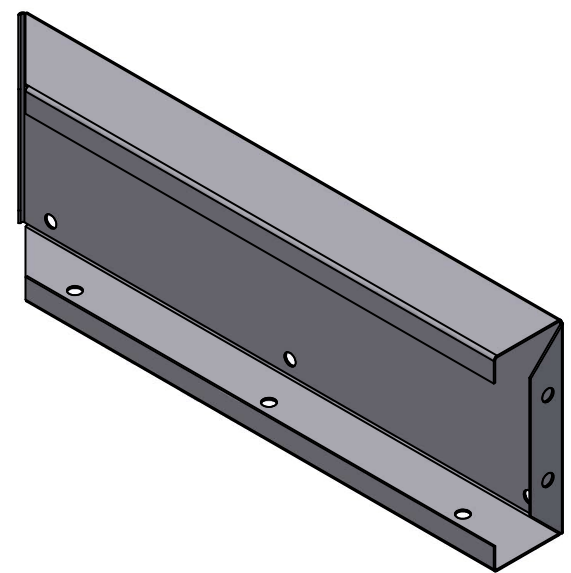
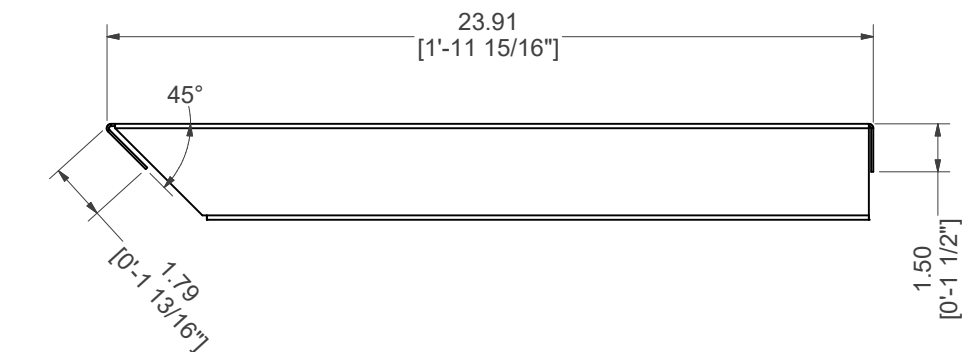
**MATERIAL:**  
14 GA. GALVANIZED

**DRAWN BY:**  
SG


**DATE:** 9/28/2023

**SHEET:** 7 OF 25

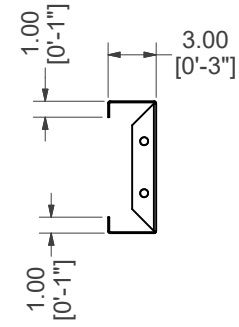
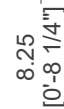
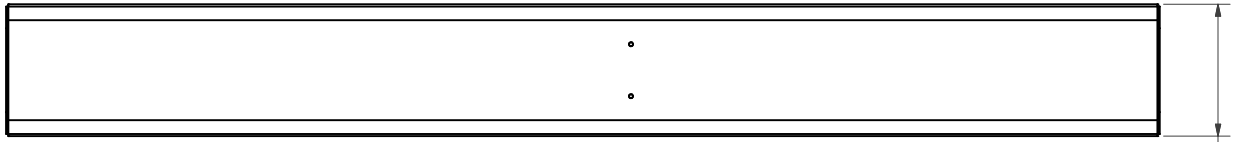
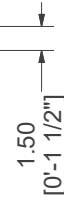
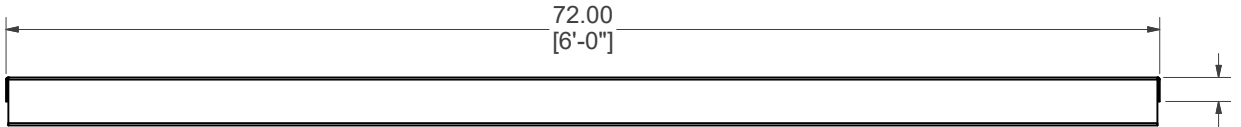
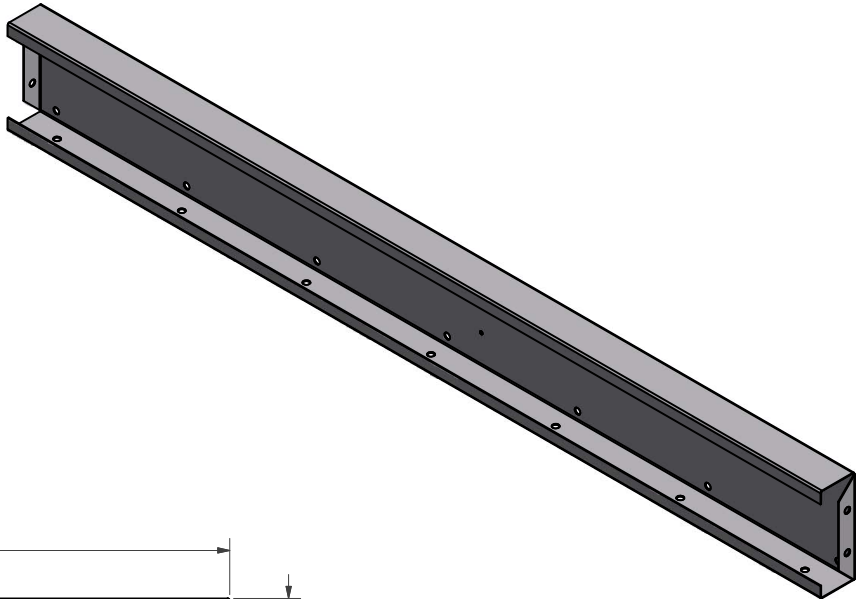
**NOTES:**




# STRAIGHT, TOP RISER, RIGHT

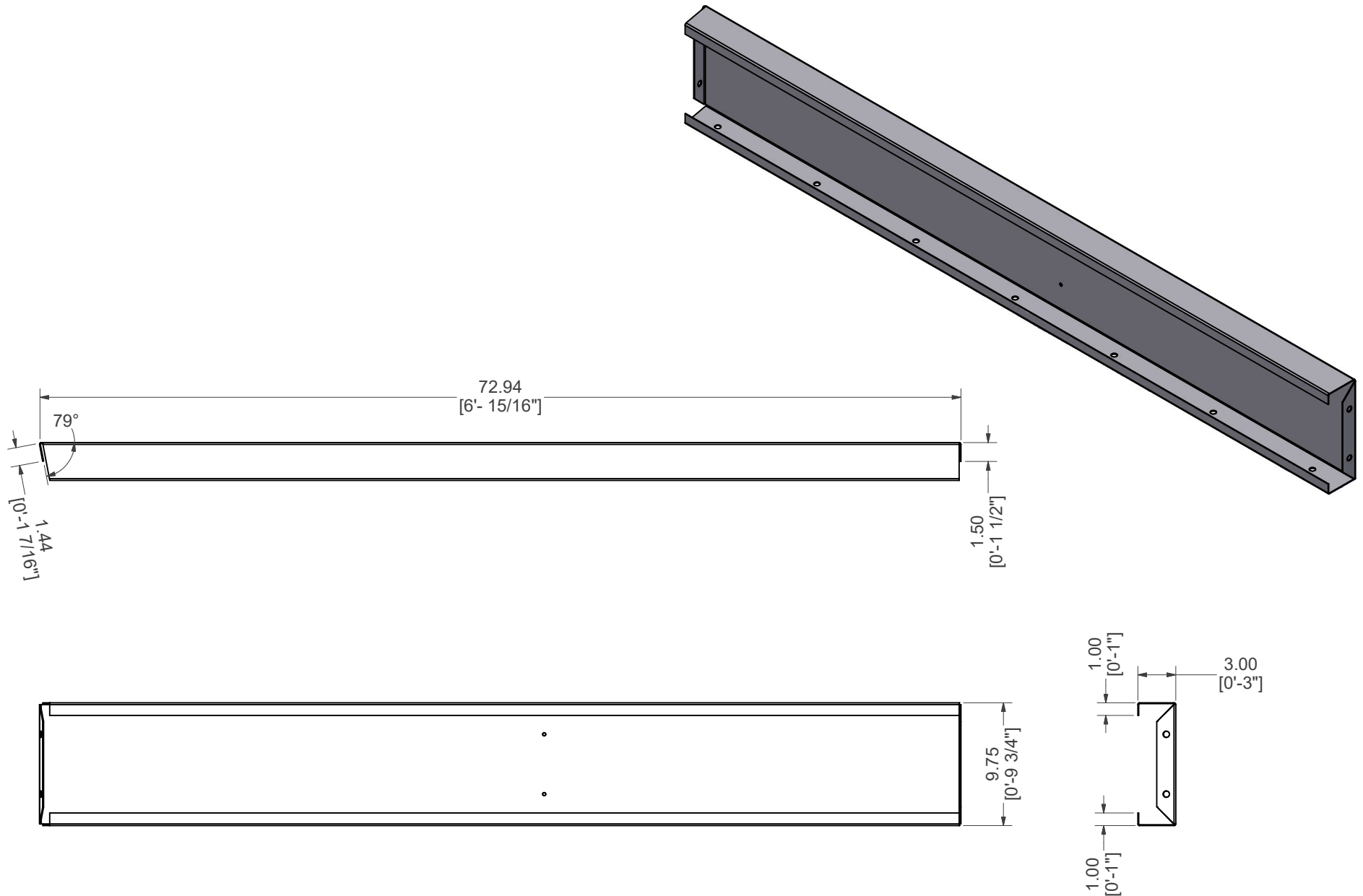
<b>PART #:</b> ESC-17687-TRR  	<b>WEIGHT:</b> 7.72 lbmass	<b>MACHINE TIME:</b> N/A	<b>FILE/DIRECTORY:</b> C:\Vault\FTWDesign\CUSTOM STEPS\ESC-17000-17999\ESC-17687.idw
	TOLERANCES EXCEPT AS NOTED 0/0 0.0 0.00 0.000 0' ±1/8 ±0.25 ±0.0625 ±0.03125 ±1/2'	<b>MATERIAL:</b> 14 GA. GALVANIZED	<b>DATE :</b> 9/28/2023
<b>DRAWN BY:</b> SG	<b>SHEET :</b> 8 OF 25		






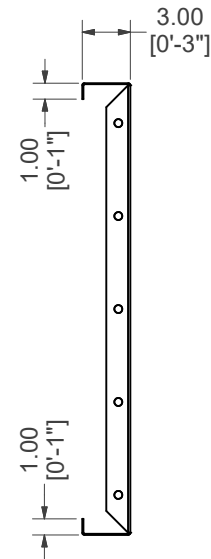
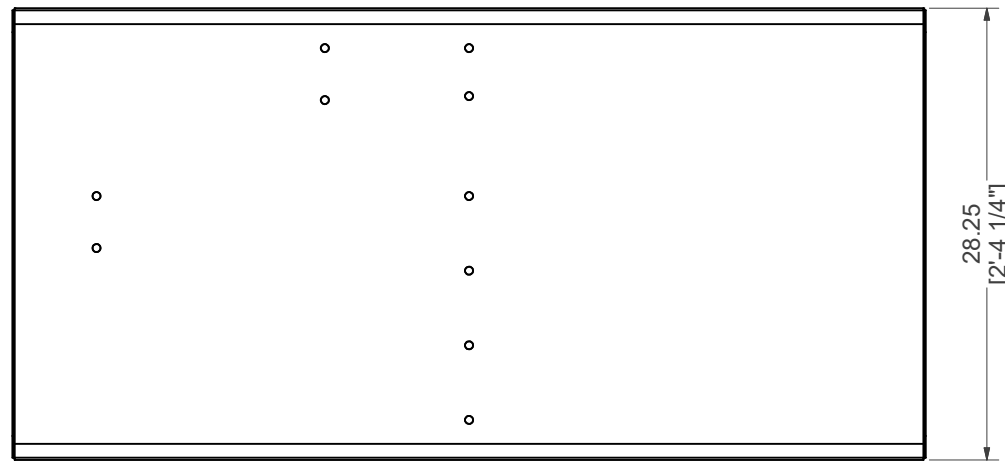
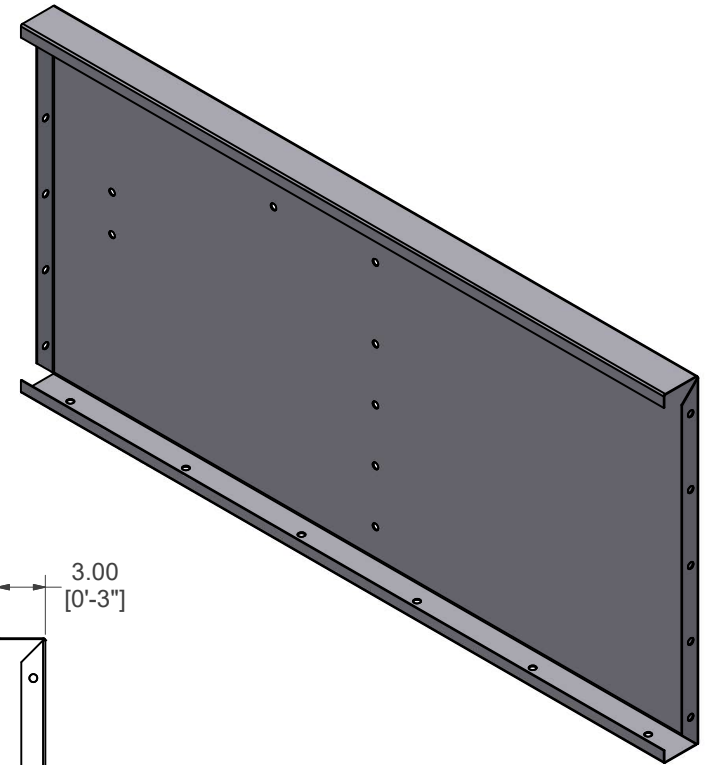
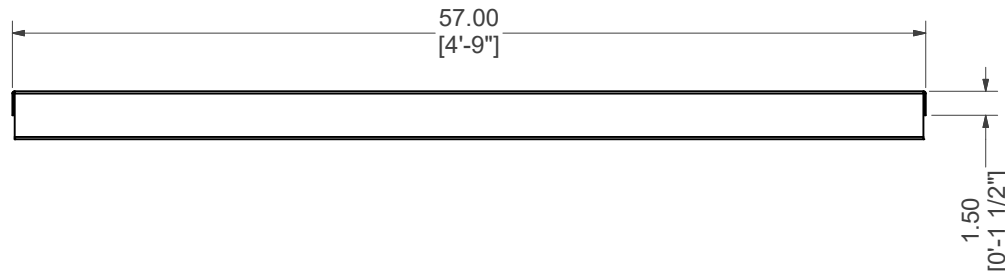
# STRAIGHT, MIDDLE RISER

<b>PART #:</b> ESC-17295-MR	<b>WEIGHT:</b> 23.35 lbmass	<b>MACHINE TIME:</b> N/A	<b>FILE/DIRECTORY:</b> C:\Vault\FTWDesign\CUSTOM STEPS\ESC-17000-17999\ESC-17687.idw
	TOLERANCES EXCEPT AS NOTED 0/0 0.0 0.00 0.000 0' ±1/8 ±0.25 ±0.0625 ±0.03125 ±1/2'	<b>MATERIAL:</b> 14 GA. GALVANIZED  <b>DRAWN BY:</b> SG	<b>DATE :</b> 9/28/2023  <b>SHEET :</b> 9 OF 25
<b>NOTES:</b>			




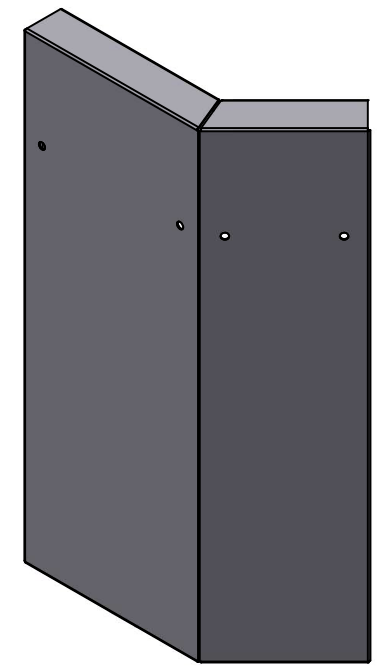
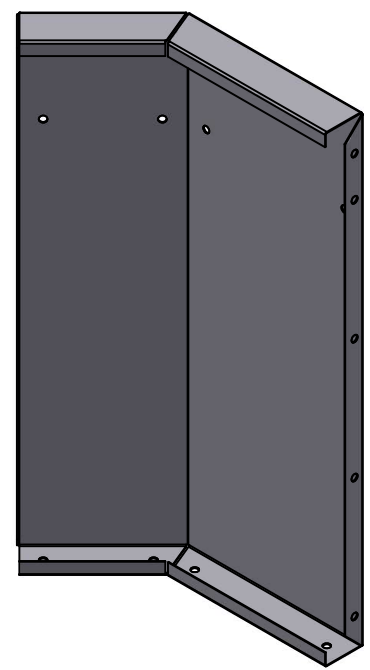
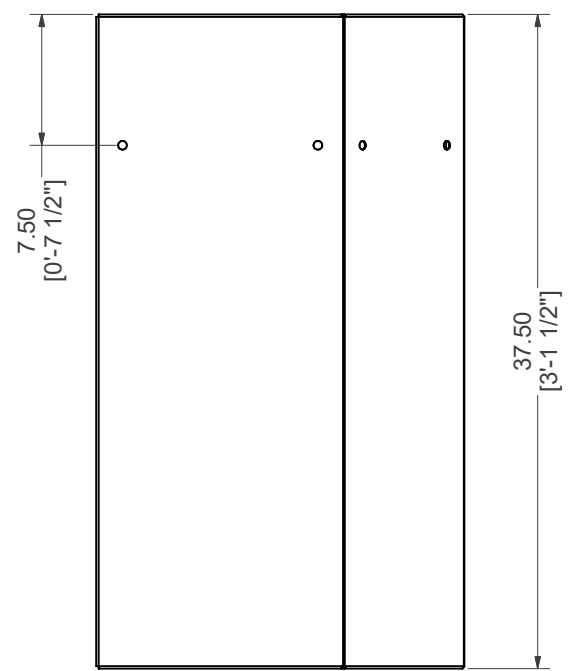
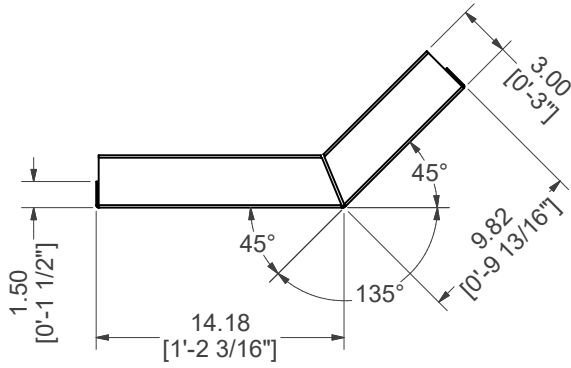
# STRAIGHT, BOTTOM RISER

<b>PART #:</b> ESC-9625-BR	<b>WEIGHT:</b> 25.93 lbmass	<b>MACHINE TIME:</b> N/A	<b>FILE/DIRECTORY:</b> C:\Vault\FTWDesign\CUSTOM STEPS\ESC-17000-17999\ESC-17687.idw
	TOLERANCES EXCEPT AS NOTED	<b>MATERIAL:</b> 14 GA. GALVANIZED	<b>DATE:</b> 9/28/2023
	0/0 0.0 0.00 0.000 0'	<b>DRAWN BY:</b> SG	<b>SHEET:</b> 10 OF 25
±1/8 ±0.25 ±0.0625 ±0.03125 ±1/2'			<b>NOTES:</b>




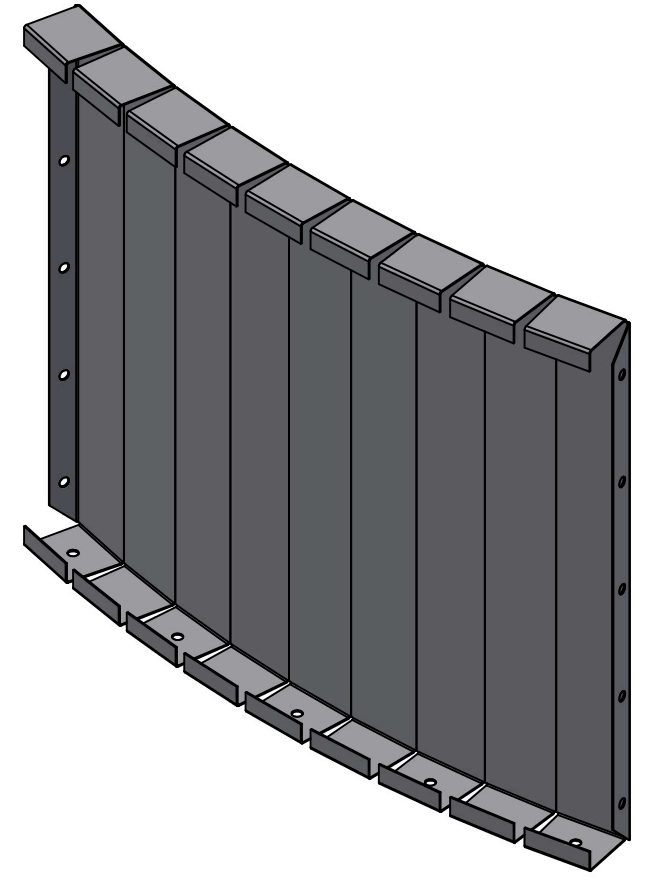
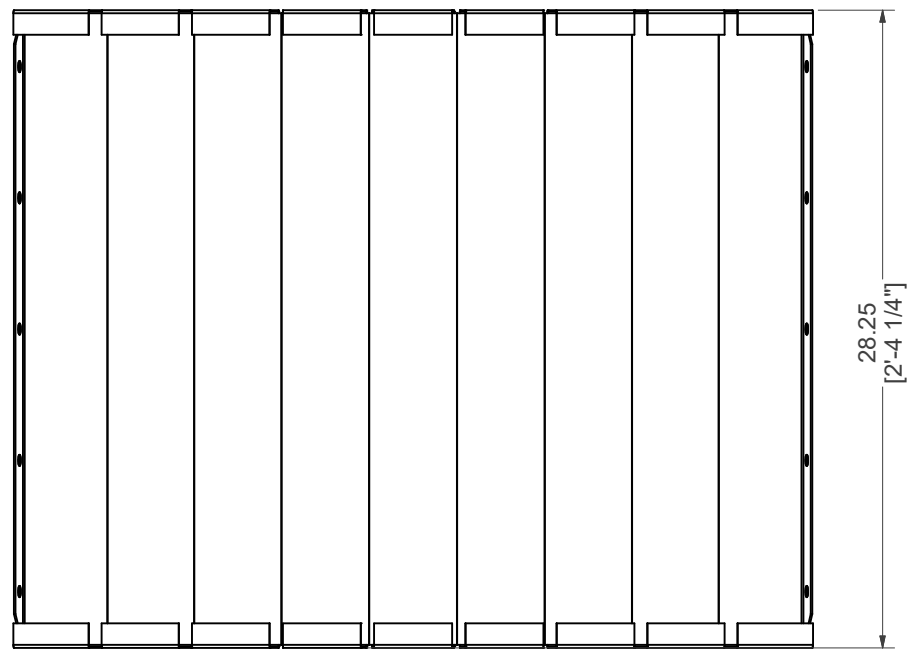
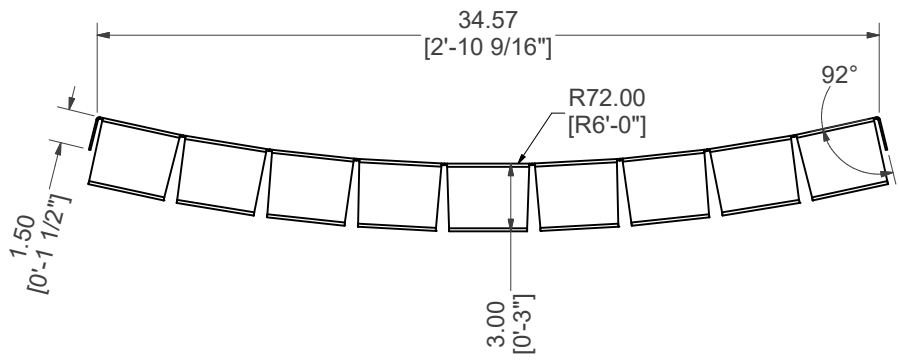
# STRAIGHT, SUNLEDGE RISER, END

<b>PART #:</b> ESC-17295-SRE  	<b>WEIGHT:</b> 42.80 lbmass	<b>MACHINE TIME:</b> N/A	<b>FILE/DIRECTORY:</b> C:\Vault\FTWDesign\CUSTOM STEPS\ESC-17000-17999\ESC-17687.idw
	<b>TOLERANCES EXCEPT AS NOTED</b> 0/0 0.0 0.00 0.000 0' ±1/8 ±0.25 ±0.0625 ±0.03125 ±1/2'	<b>MATERIAL:</b> 14 GA. GALVANIZED	<b>DATE:</b> 9/28/2023
<b>DRAWN BY:</b> SG	<b>SHEET:</b> 11 OF 25		



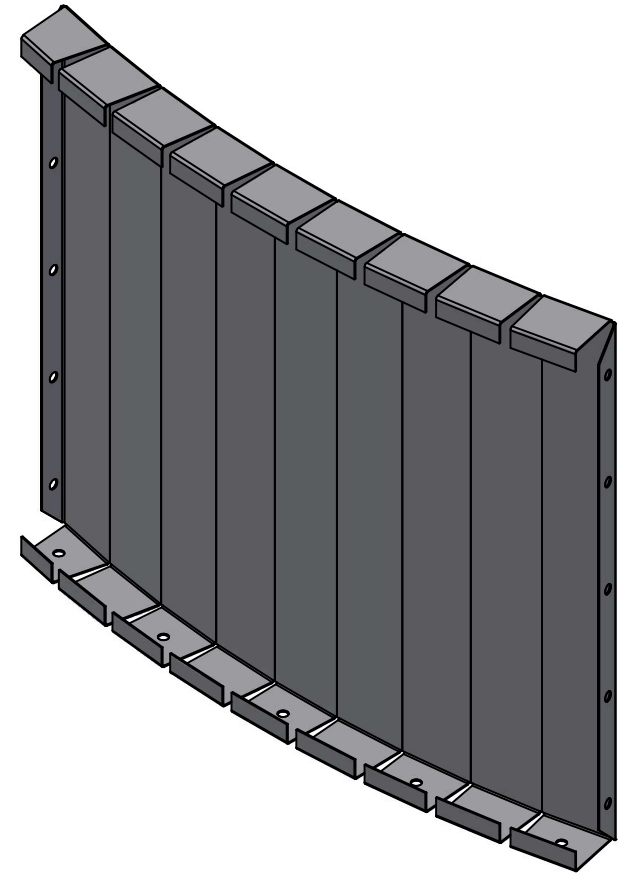
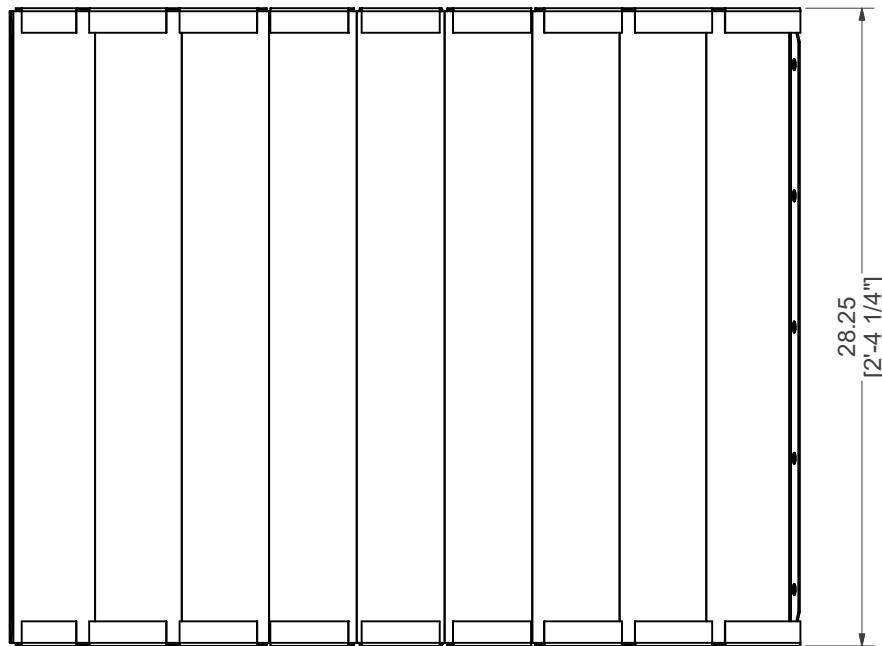
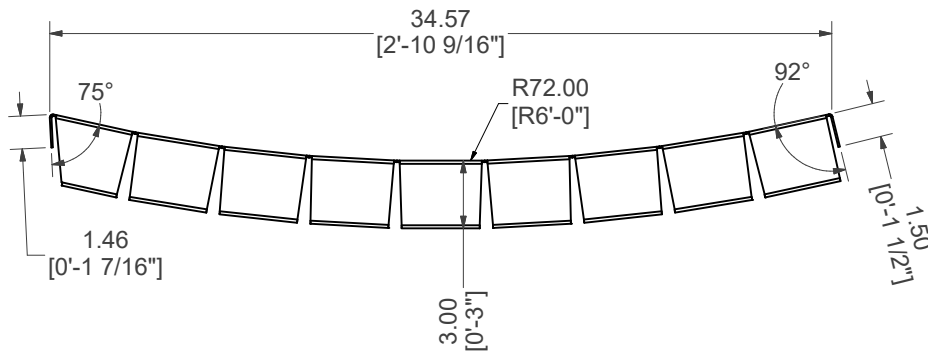
# STR REV, TOP RISER

<b>PART #:</b> ESC-17687-SRTR  	<b>WEIGHT:</b> 23.57 lbmass	<b>MACHINE TIME:</b> N/A	<b>FILE/DIRECTORY:</b> C:\Vault\FTWDesign\CUSTOM STEPS\ESC-17000-17999\ESC-17687.idw
	TOLERANCES EXCEPT AS NOTED 0/0 0.0 0.00 0.000 0' ±1/8 ±0.25 ±0.0625 ±0.03125 ±1/2'	<b>MATERIAL:</b> 14 GA. GALVANIZED	<b>DATE :</b> 9/28/2023
<b>DRAWN BY:</b> SG	<b>SHEET :</b> 12 OF 25		



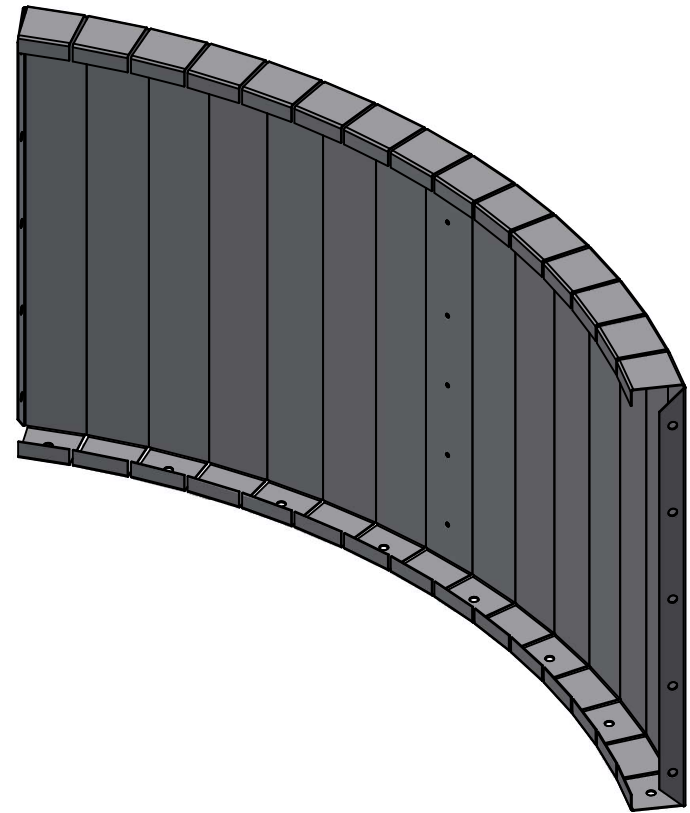
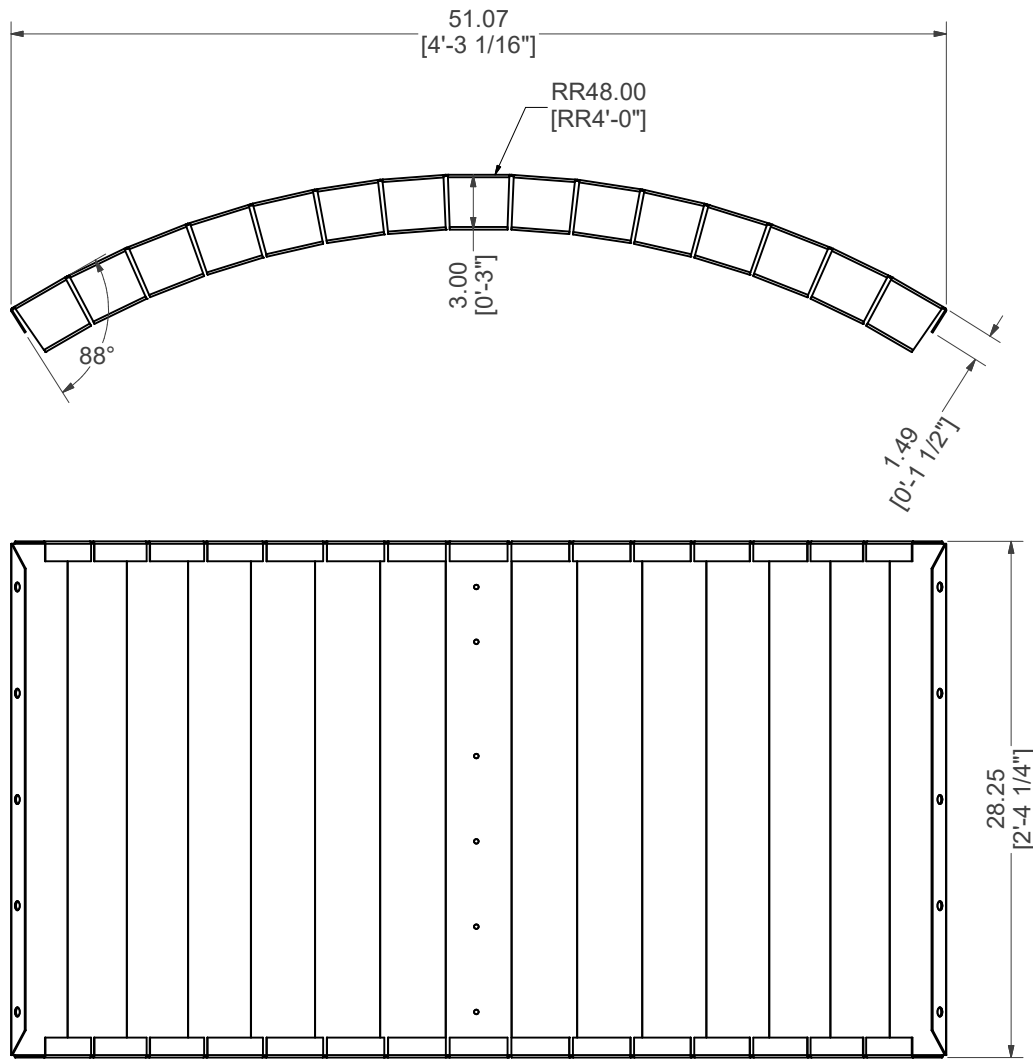
# RADIUS, SUNLEDGE RISER, MIDDLE

<b>PART #:</b> ESC-12913-SRM  	<b>WEIGHT:</b> 26.42 lbmass	<b>MACHINE TIME:</b> N/A	<b>FILE/DIRECTORY:</b> C:\Vault\FTWDesign\CUSTOM STEPS\ESC-17000-17999\ESC-17687.idw
	TOLERANCES EXCEPT AS NOTED 0/0 0.0 0.00 0.000 0' ±1/8 ±0.25 ±0.0625 ±0.03125 ±1/2'	<b>MATERIAL:</b> 14 GA. GALVANIZED	<b>DATE :</b> 9/28/2023
<b>DRAWN BY:</b> SG	<b>SHEET :</b> 13 OF 25		




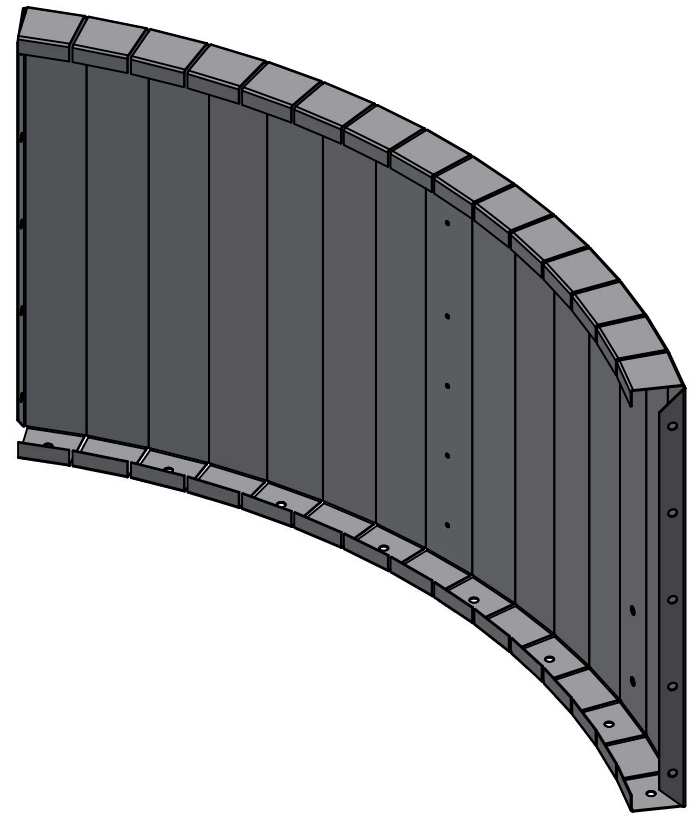
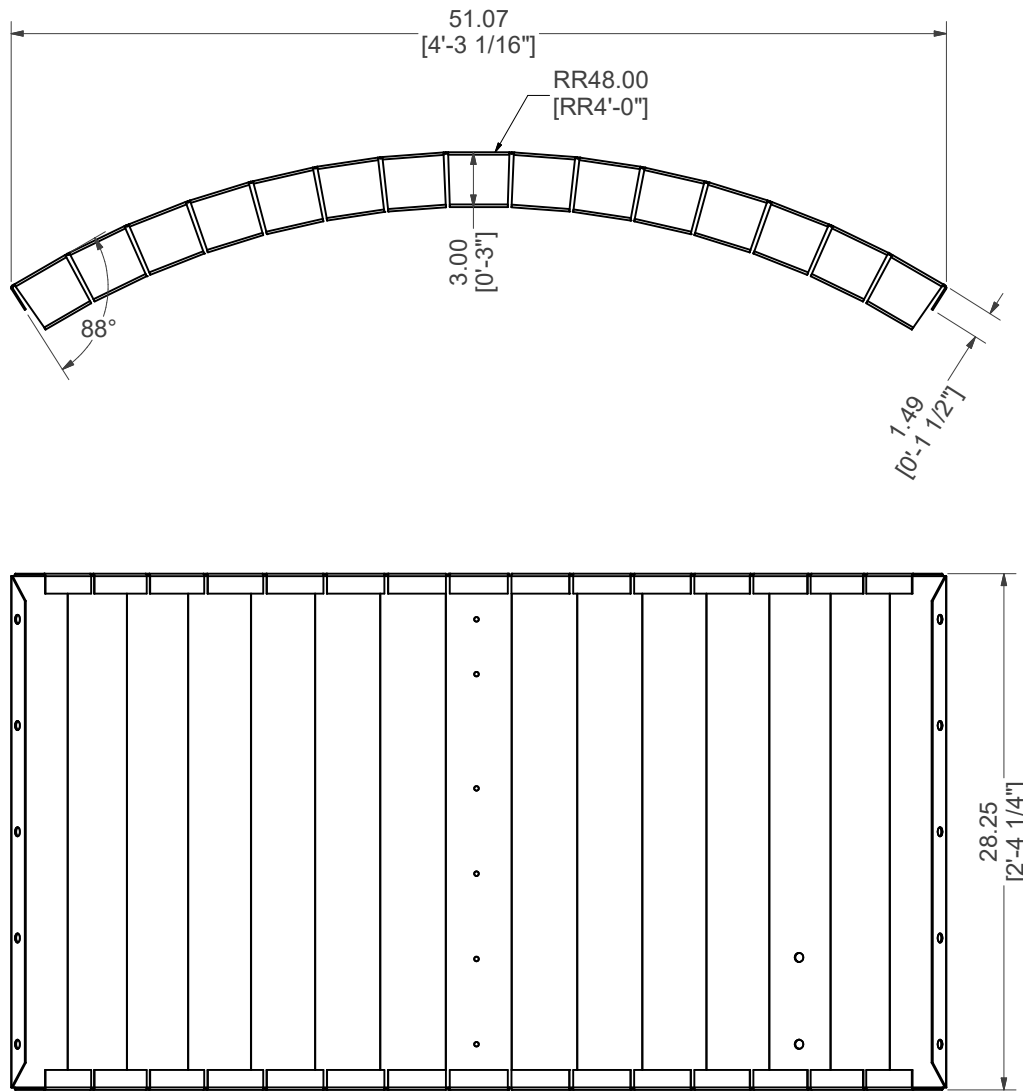
# RADIUS, SUNLEDGE RISER, RIGHT

<b>PART #:</b> ESC-12913-SRR  	<b>WEIGHT:</b> 26.29 lbmass	<b>MACHINE TIME:</b> N/A	<b>FILE/DIRECTORY:</b> C:\Vault\FTWDesign\CUSTOM STEPS\ESC-17000-17999\ESC-17687.idw
	TOLERANCES EXCEPT AS NOTED 0/0 0.0 0.00 0.000 0' ±1/8 ±0.25 ±0.0625 ±0.03125 ±1/2'	<b>MATERIAL:</b> 14 GA. GALVANIZED	<b>DATE :</b> 9/28/2023
<b>DRAWN BY:</b> SG	<b>SHEET :</b> 14 OF 25		




# REV RAD, SUNLEDGE RISER, MIDDLE, LEFT

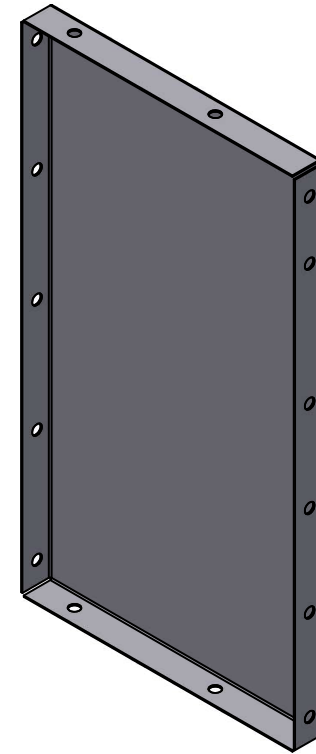
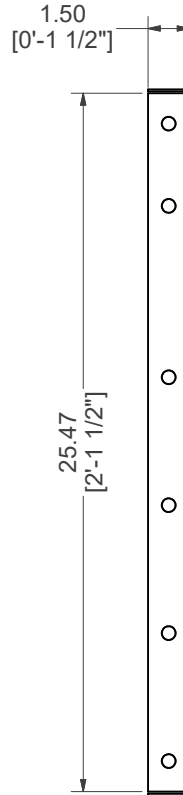
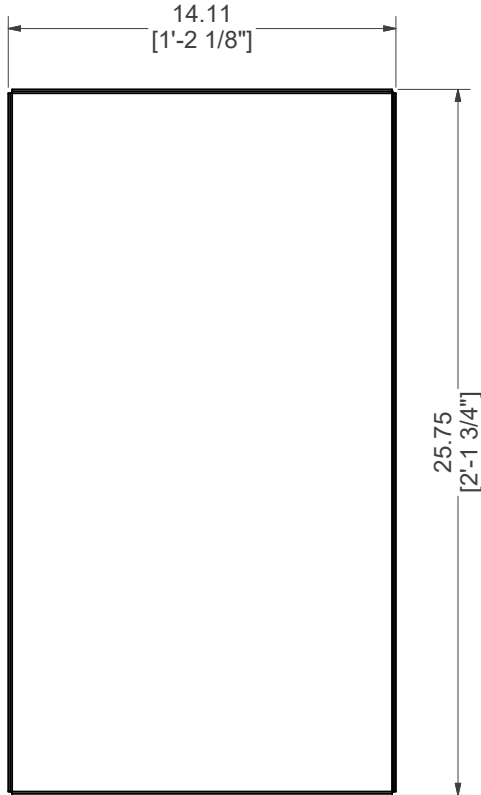
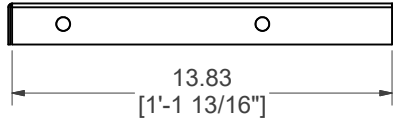
<b>PART #:</b> ESC-12913-SML  	<b>WEIGHT:</b> 39.88 lbmass	<b>MACHINE TIME:</b> N/A	<b>FILE/DIRECTORY:</b> C:\Vault\FTWDesign\CUSTOM STEPS\ESC-17000-17999\ESC-17687.idw
	TOLERANCES EXCEPT AS NOTED 0/0 0.0 0.00 0.000 0' ±1/8 ±0.25 ±0.0625 ±0.03125 ±1/2'	<b>MATERIAL:</b> 14 GA. GALVANIZED	<b>DATE :</b> 9/28/2023
	<b>DRAWN BY:</b> SG	<b>SHEET :</b> 15 OF 25	




# REV RAD, SUNLEDGE RISER, LEFT

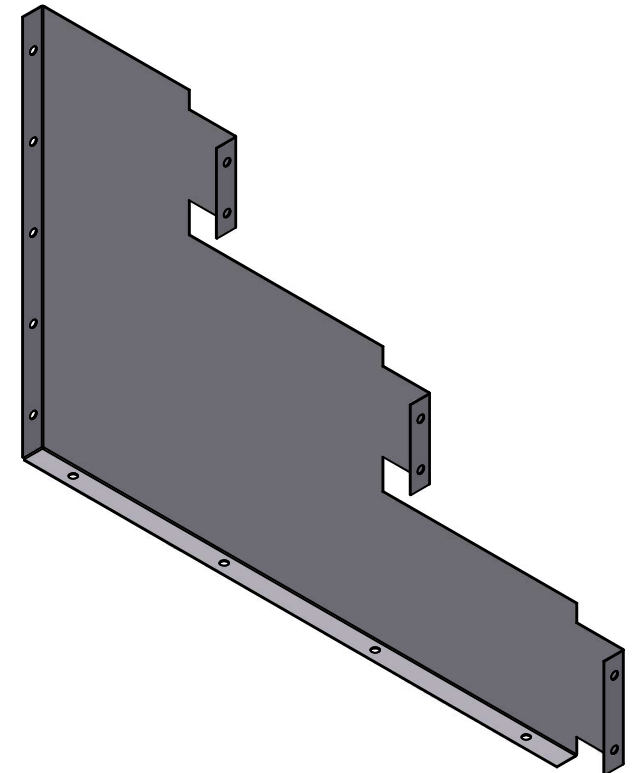
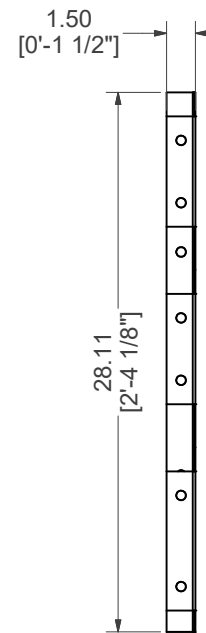
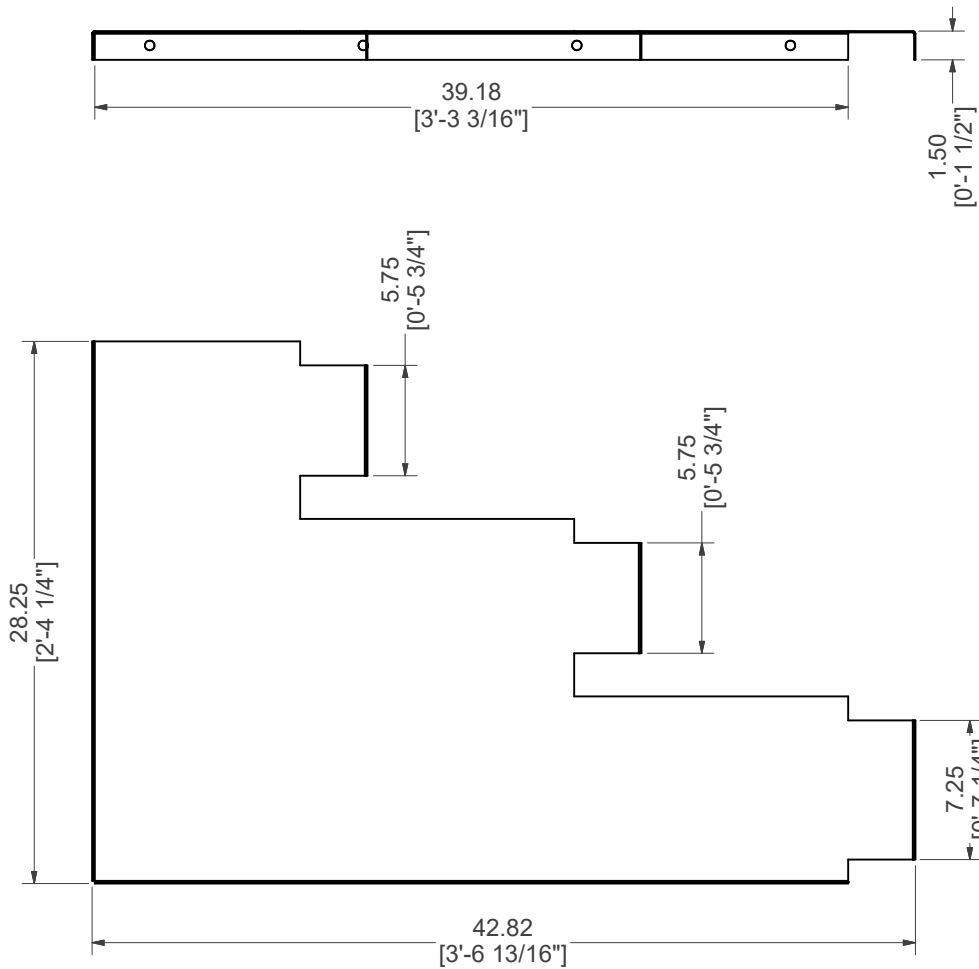
<b>PART #:</b> ESC-12913-SRL  	<b>WEIGHT:</b> 39.87 lbmass	<b>MACHINE TIME:</b> N/A	<b>FILE/DIRECTORY:</b> C:\Vault\FTWDesign\CUSTOM STEPS\ESC-17000-17999\ESC-17687.idw
	TOLERANCES EXCEPT AS NOTED 0/0 0.0 0.00 0.000 0' ±1/8 ±0.25 ±0.0625 ±0.03125 ±1/2'	<b>MATERIAL:</b> 14 GA. GALVANIZED	<b>DATE :</b> 9/28/2023
	<b>DRAWN BY:</b> SG	<b>SHEET :</b> 16 OF 25	






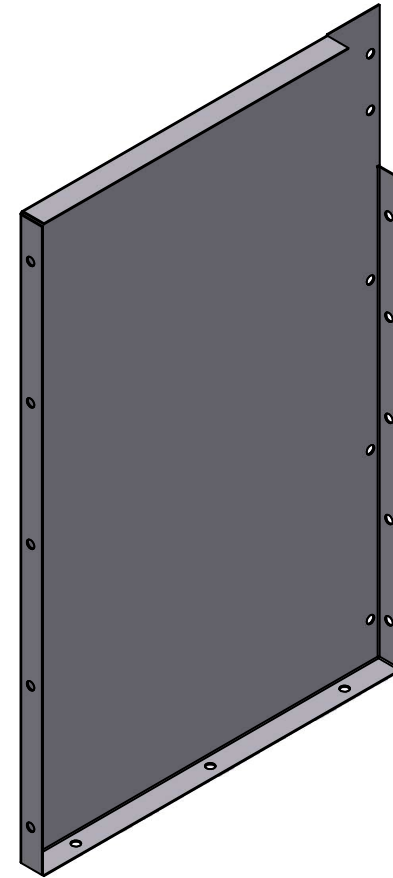
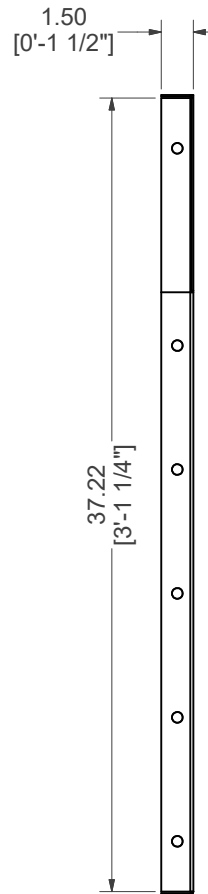
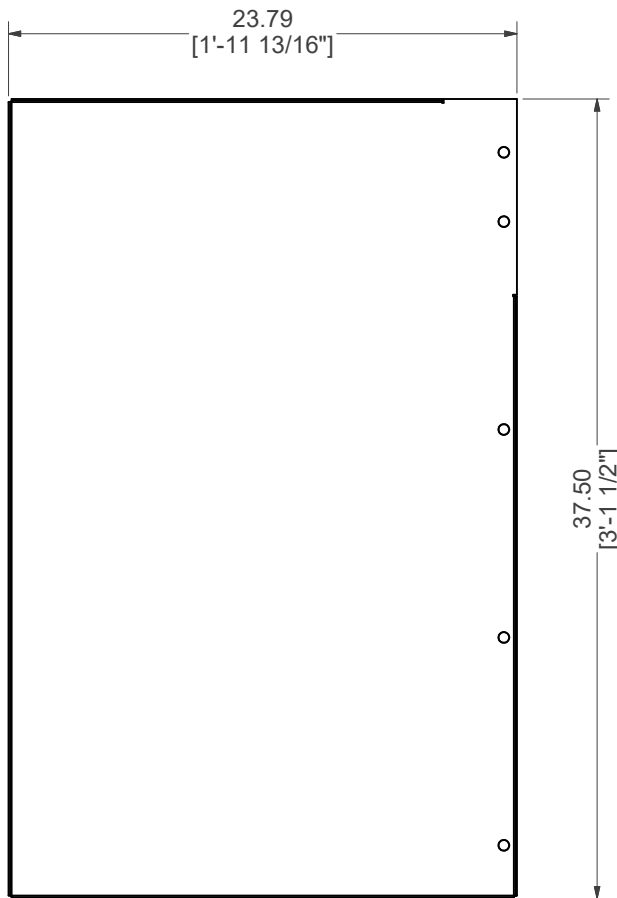
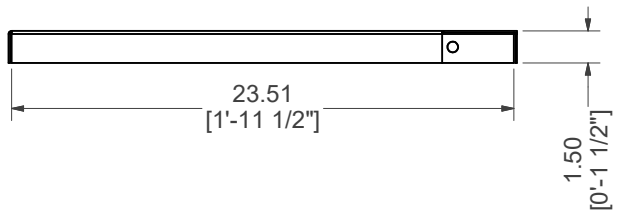
# BRACE, TOP MIDDLE RISER SUPPORT

<b>PART #:</b> ESC-8029-TMRS  	<b>WEIGHT:</b> 9.53 lbmass	<b>MACHINE TIME:</b> N/A	<b>FILE/DIRECTORY:</b> C:\Vault\FTWDesign\CUSTOM STEPS\ESC-17000-17999\ESC-17687.idw
	<b>TOLERANCES EXCEPT AS NOTED</b> 0/0 0.0 0.00 0.000 0' ±1/8 ±0.25 ±0.0625 ±0.03125 ±1/2'	<b>MATERIAL:</b> 14 GA. GALVANIZED	<b>DATE :</b> 9/28/2023
	<b>DRAWN BY:</b> SG	<b>SHEET :</b> 17 OF 25	




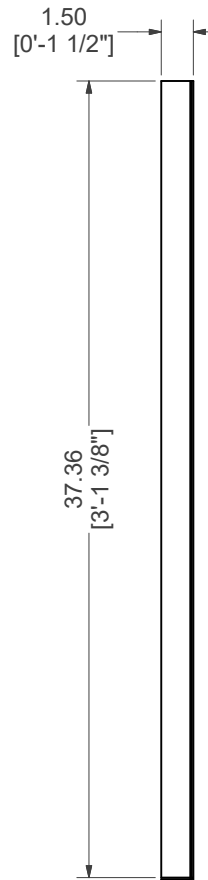
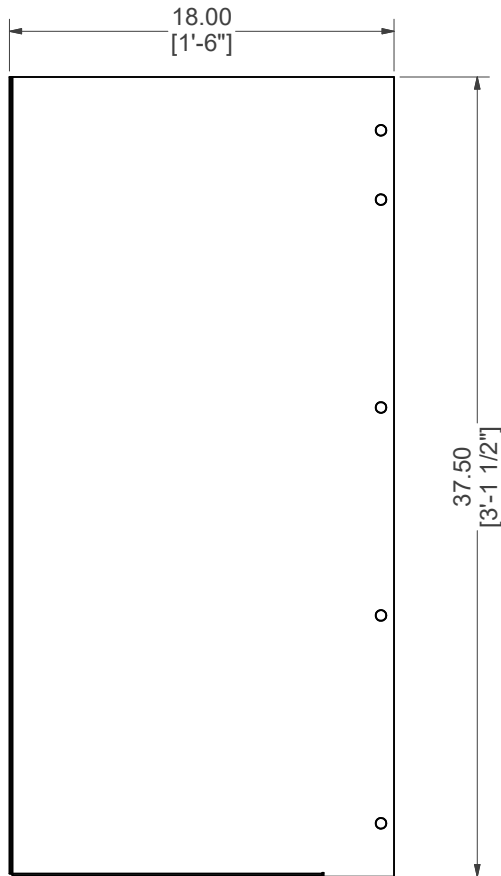
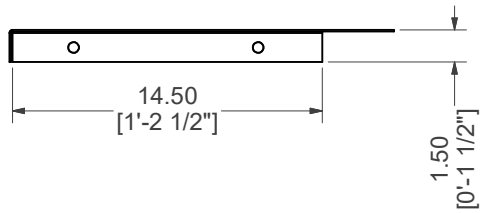
## BRACE, 3-RISER SUPPORT

<b>PART #:</b> ESC-17687-CSB	<b>WEIGHT:</b> 18.23 lbmass	<b>MACHINE TIME:</b> N/A	<b>FILE/DIRECTORY:</b> C:\Vault\FTWDesign\CUSTOM STEPS\ESC-17000-17999\ESC-17687.idw
	TOLERANCES EXCEPT AS NOTED 0/0 0.0 0.00 0.000 0' ±1/8 ±0.25 ±0.0625 ±0.03125 ±1/2'	<b>MATERIAL:</b> 14 GA. GALVANIZED	<b>DATE :</b> 9/28/2023
		<b>DRAWN BY:</b> SG	<b>SHEET :</b> 18 OF 25
<b>NOTES:</b>			



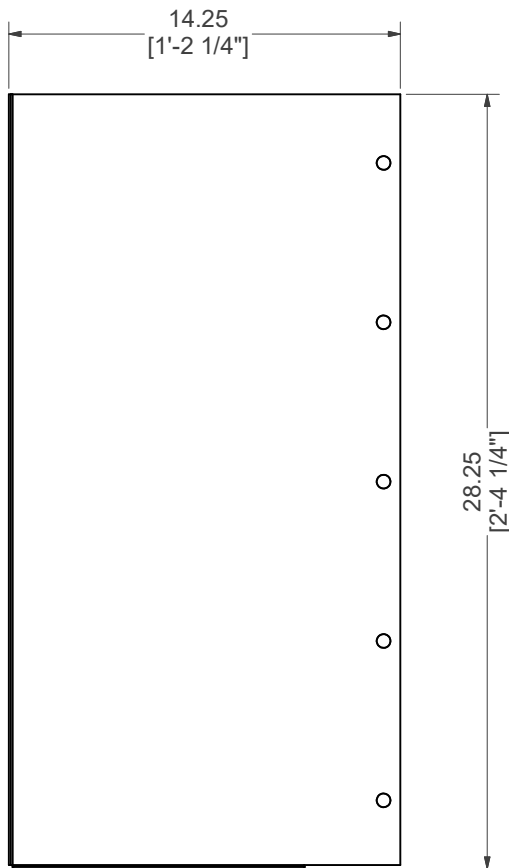
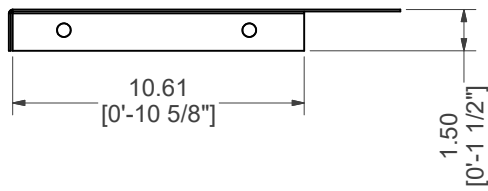
# BRACE, TOP RISER

<b>PART #:</b> ESC-17687-TRB	<b>WEIGHT:</b> 21.12 lbmass	<b>MACHINE TIME:</b> N/A	<b>FILE/DIRECTORY:</b> C:\Vault\FTWDesign\CUSTOM STEPS\ESC-17000-17999\ESC-17687.idw
	<b>TOLERANCES EXCEPT AS NOTED</b> 0/0 0.0 0.00 0.000 0' ±1/8 ±0.25 ±0.0625 ±0.03125 ±1/2'	<b>MATERIAL:</b> 14 GA. GALVANIZED	<b>DATE :</b> 9/28/2023
		<b>DRAWN BY:</b> SG	<b>SHEET :</b> 19 OF 25
<b>NOTES:</b>			




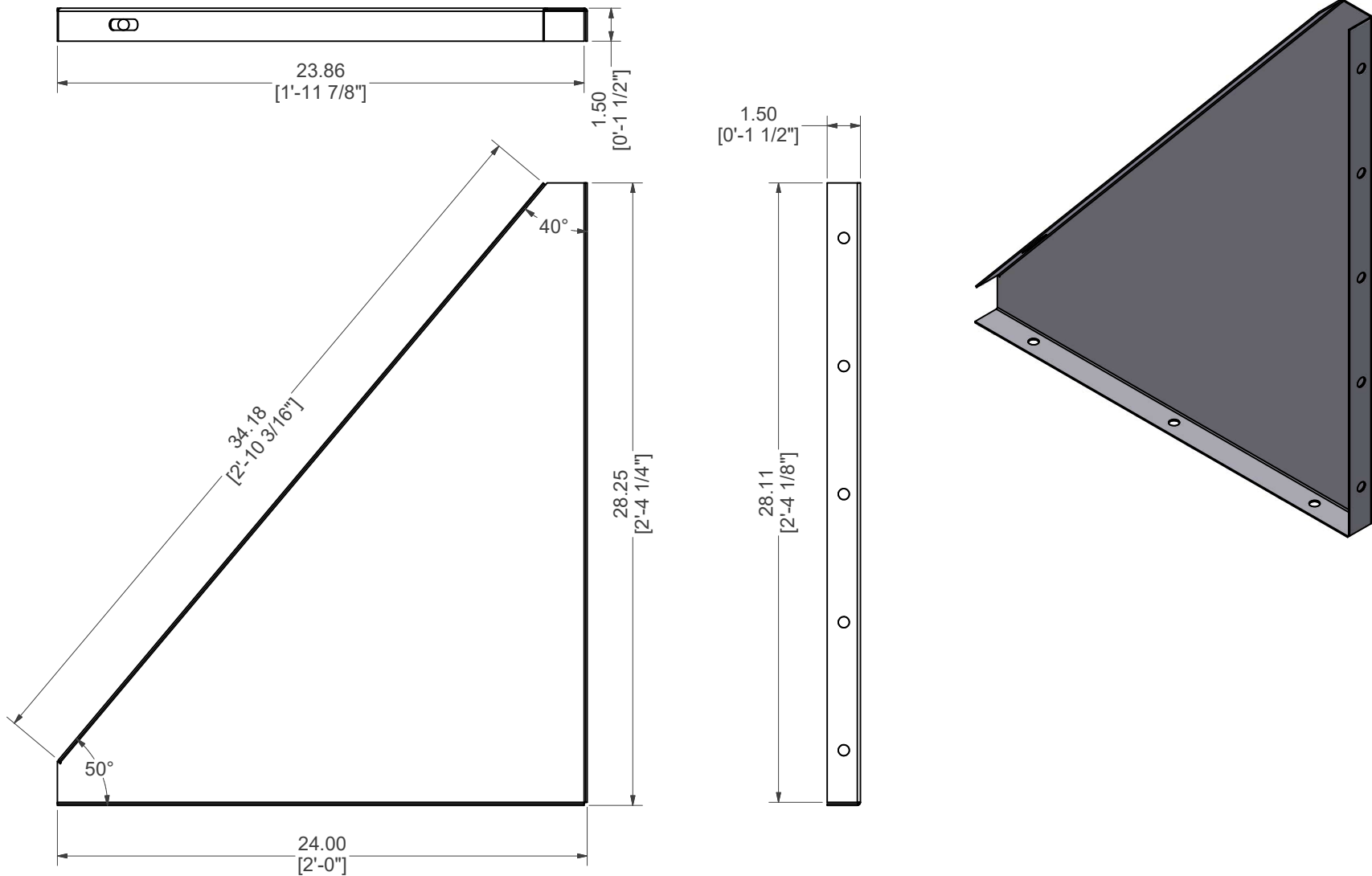
# BRACE, TOP RISER SUPPORT, RIGHT

<b>PART #:</b> ESC-17295-TRSR  	<b>WEIGHT:</b> 15.15 lbmass	<b>MACHINE TIME:</b> N/A	<b>FILE/DIRECTORY:</b> C:\Vault\FTWDesign\CUSTOM STEPS\ESC-17000-17999\ESC-17687.idw
	TOLERANCES EXCEPT AS NOTED 0/0 0.0 0.00 0.000 0' ±1/8 ±0.25 ±0.0625 ±0.03125 ±1/2'	<b>MATERIAL:</b> 14 GA. GALVANIZED	<b>DATE :</b> 9/28/2023
<b>DRAWN BY:</b> SG	<b>SHEET :</b> 20 OF 25		




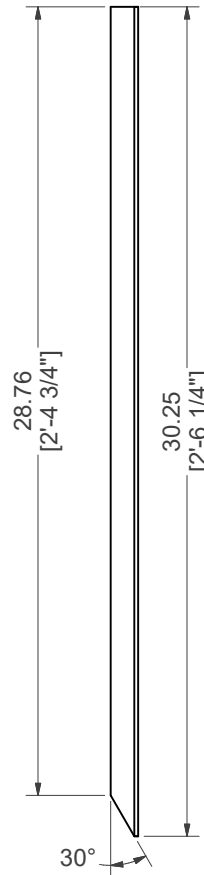
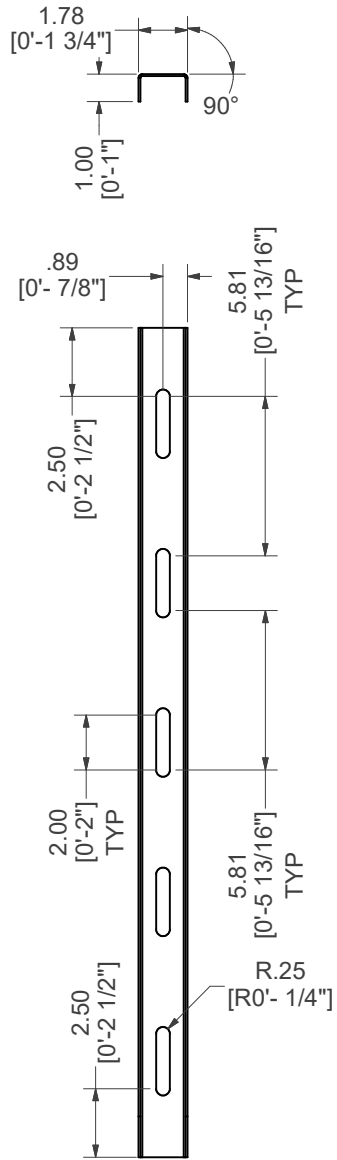
# BRACE, SUNLEDGE RISER SUPPORT

<b>PART #:</b> ESC-12913-SRS  	<b>WEIGHT:</b> 9.21 lbmass	<b>MACHINE TIME:</b> N/A	<b>FILE/DIRECTORY:</b> C:\Vault\FTWDesign\CUSTOM STEPS\ESC-17000-17999\ESC-17687.idw
	TOLERANCES EXCEPT AS NOTED 0/0 0.0 0.00 0.000 0' ±1/8 ±0.25 ±0.0625 ±0.03125 ±1/2'	<b>MATERIAL:</b> 14 GA. GALVANIZED	<b>DATE :</b> 9/28/2023
	<b>DRAWN BY:</b> SG	<b>SHEET :</b> 21 OF 25	



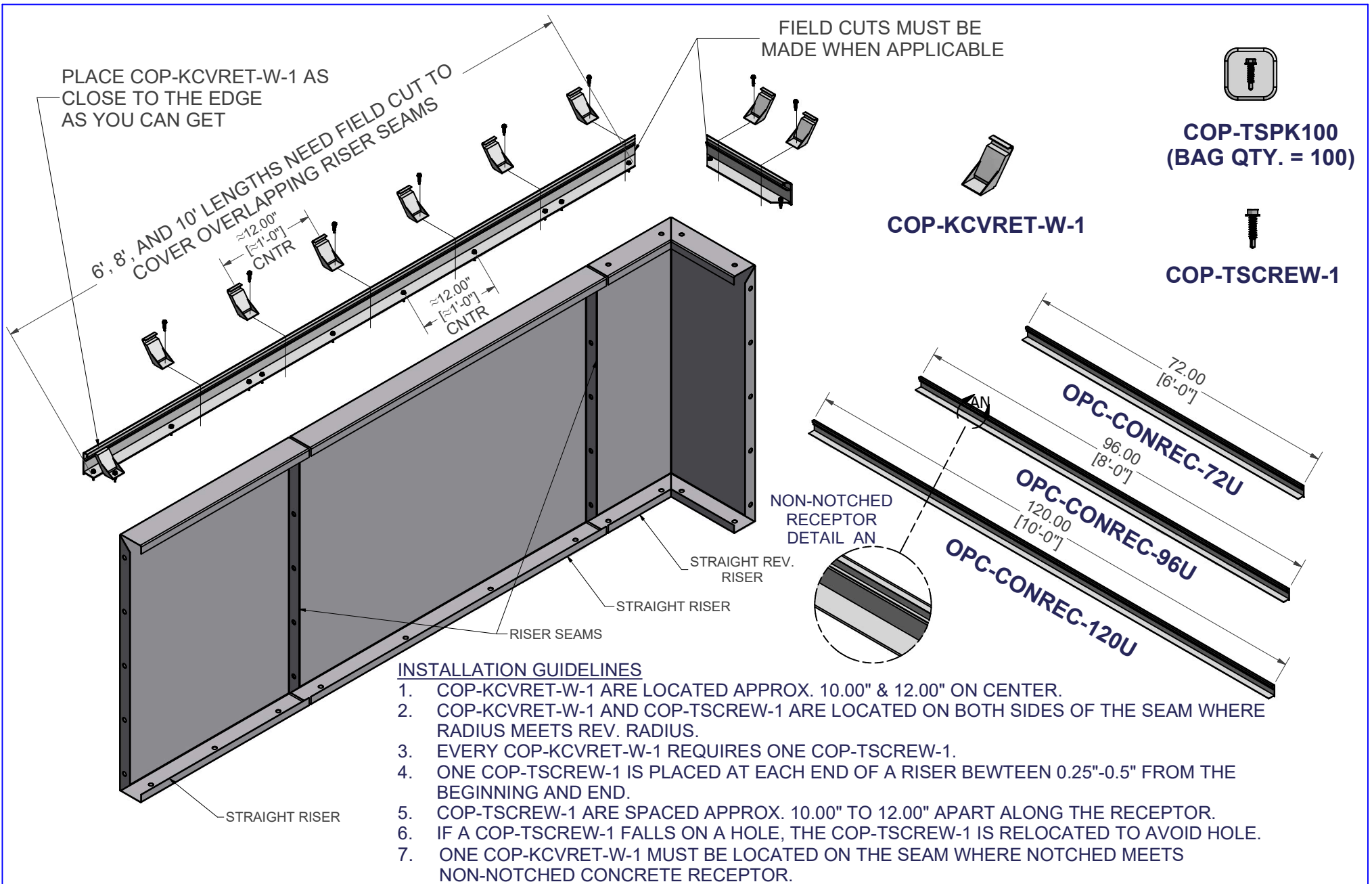
# BRACE, SUNLEDGE RISER ANGLE SUPPORT

<b>PART #:</b> ESC-9545-BUB  	<b>WEIGHT:</b> 10.28 lbmass	<b>MACHINE TIME:</b> N/A	<b>FILE/DIRECTORY:</b> C:\Vault\FTWDesign\CUSTOM STEPS\ESC-17000-17999\ESC-17687.idw
	TOLERANCES EXCEPT AS NOTED 0/0 0.0 0.00 0.000 0' ±1/8 ±0.25 ±0.0625 ±0.03125 ±1/2'	<b>MATERIAL:</b> 14 GA. GALVANIZED	<b>DATE :</b> 9/28/2023
<b>DRAWN BY:</b> SG	<b>SHEET :</b> 22 OF 25		



# BRACE, DRIVE STAKE CHANNEL SET

<b>PART #:</b> ESC-12913-DS  	<b>WEIGHT:</b> 2.03 lbmass	<b>MACHINE TIME:</b> N/A	<b>FILE/DIRECTORY:</b> C:\Vault\FTWDesign\CUSTOM STEPS\ESC-17000-17999\ESC-17687.idw
	<b>TOLERANCES EXCEPT AS NOTED</b> 0/0 0.0 0.00 0.000 0' ±1/8 ±0.25 ±0.0625 ±0.03125 ±1/2'	<b>MATERIAL:</b> 14 GA. GALVANIZED	<b>DATE:</b> 9/28/2023
<b>DRAWN BY:</b> SG	<b>SHEET:</b> 23 OF 25		



# NON-NOTCHED CONCRETE RECEPTOR FIELD INSTALLATION

<b>PART #</b> <b>STRAIGHT CONCRETE RECEPTOR</b>	<b>WEIGHT:</b> 77.51 lbmass	<b>MACHINE TIME:</b> N/A	<b>FILE/DIRECTORY:</b> C:\Vault\FTWDesign\CUSTOM STEPS\ESC-17000-17999\ESC-17687.idw
	<b>TOLERANCES EXCEPT AS NOTED</b> 0/0 0.0 0.00 0.000 0' ±1/8 ±0.25 ±0.0625 ±0.03125 ±1/2"	<b>MATERIAL:</b>	<b>DATE:</b> 9/28/2023
	<b>DRAWN BY:</b> SG	<b>SHEET:</b> 24 OF 25	



PLACE COP-KCVRET-W-1 AT SEAMS WHERE STRAIGHT MEETS A RADIUS/REV. RADIUS.

PLACE COP-TSCREW-1 ON BOTH SIDES OF THE SEAMS.

PLACE COP-KCVRET-W-1 AS CLOSE TO THE END EDGE AS YOU CAN GET.

FIELD CUTS MUST BE MADE WHEN APPLICABLE

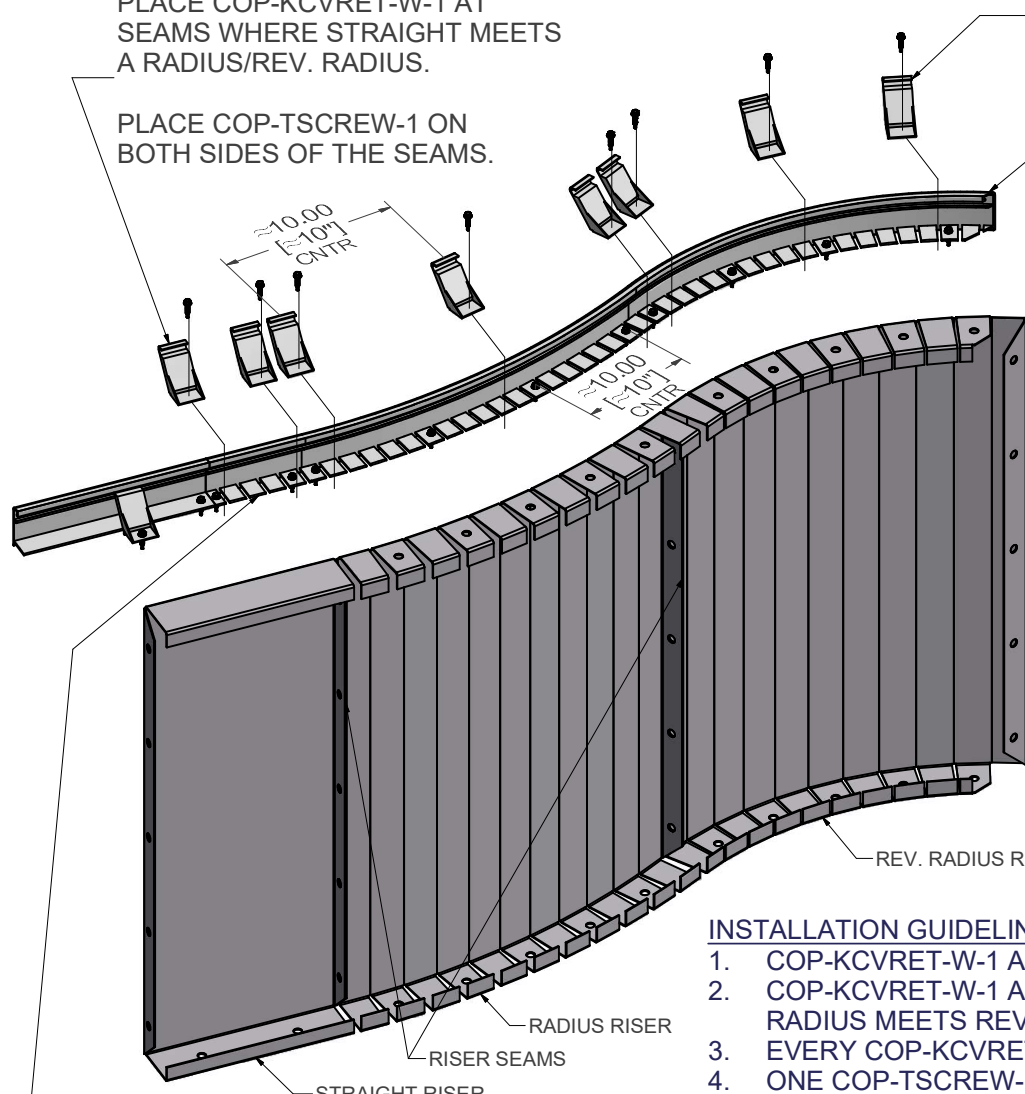


**COP-TSPK100**  
(BAG QTY. = 100)

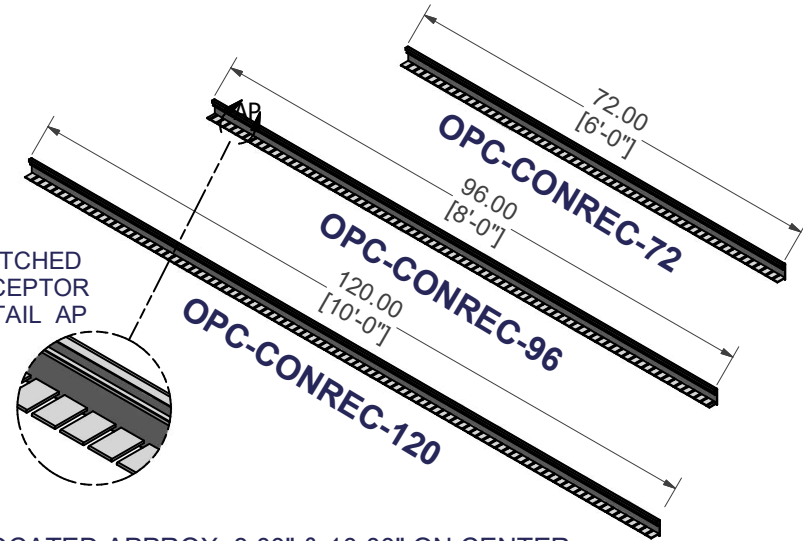


**COP-TSCREW-1**

**COP-KCVRET-W-1**



NOTCHED RECEPTOR DETAIL AP



ALLOW AN APPROX. OF 6.00" OF OVERLAP GOING FROM RADIUS/ REV. RADIUS TO A STRAIGHT RISER.

**INSTALLATION GUIDELINES**

1. COP-KCVRET-W-1 ARE LOCATED APPROX. 8.00" & 10.00" ON CENTER.
2. COP-KCVRET-W-1 AND COP-TSCREW-1 ARE LOCATED ON BOTH SIDES OF THE SEAM WHERE RADIUS MEETS REV. RADIUS.
3. EVERY COP-KCVRET-W-1 REQUIRES ONE COP-TSCREW-1.
4. ONE COP-TSCREW-1 IS PLACED AT EACH END OF A RISER BETWEEN 0.25"-0.5" FROM THE BEGINNING AND END.
5. COP-TSCREW-1 ARE SPACED APPROX. 8.00" TO 10.00" APART ALONG THE RECEPTOR.
6. IF A COP-TSCREW-1 FALLS ON A HOLE, THE COP-TSCREW-1 IS RELOCATED TO AVOID HOLE.
7. ONE COP-KCVRET-W-1 MUST BE LOCATED ON THE SEAM WHERE NOTCHED MEETS NON-NOTCHED CONCRETE RECEPTOR.

# NOTCHED CONCRETE RECEPTOR FIELD INSTALLATION

**REV-RADIUS CONCRETE RECEPTOR**

**WEIGHT:**  
52.49 lbmass

**MACHINE TIME:**  
N/A

**FILE/DIRECTORY:**

C:\Vault\FTWDesign\CUSTOM STEPS\ESC-17000-17999\ESC-17687.idw



TOLERANCES EXCEPT AS NOTED  
0/0 0.0 0.00 0.000 0'  
±1/8 ±0.25 ±0.0625 ±0.03125 ±1/2"

**MATERIAL:**

**DATE:** 9/28/2023

**NOTES:**

**DRAWN BY:** SG

**SHEET:** 25 OF 25