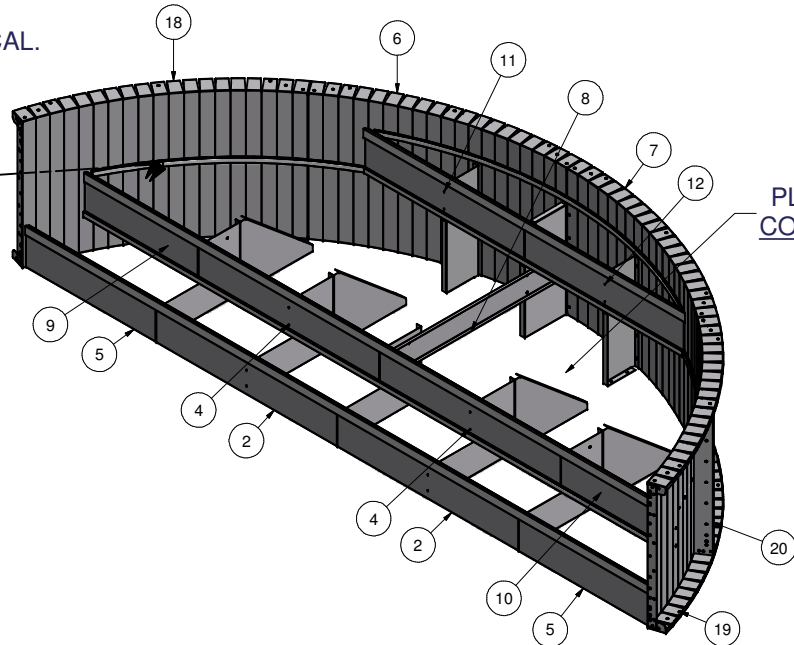
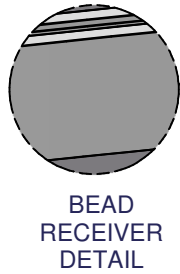
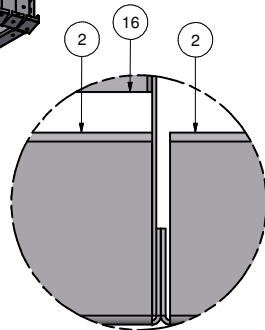
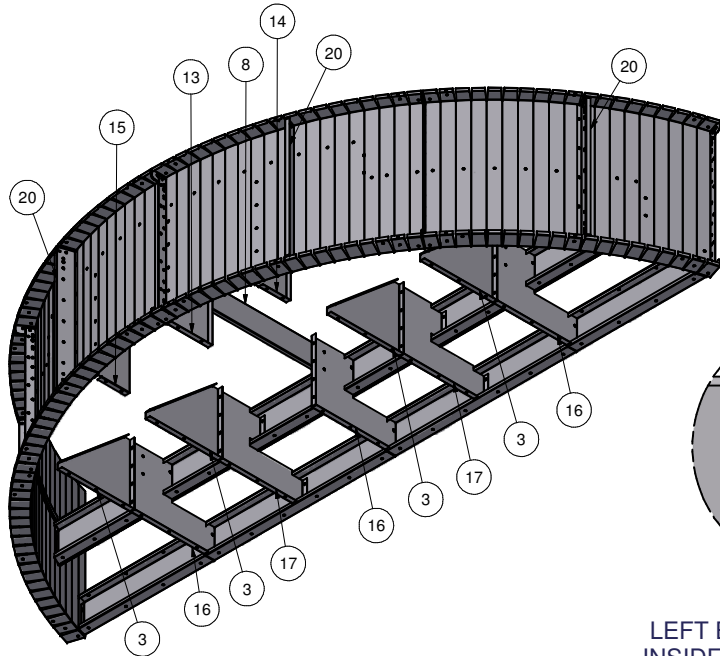


Parts List			
ITEM	QTY	PART NUMBER	DESCRIPTION
1	52	COP-KCVRET-W-1	COP COPING STIFFNER 1 5/8"-1PC
2	2	ESC-7053-BR	STRAIGHT, BOTTOM RISER
3	4	ESC-8867-BUB	BRACE, MIDDLE RISER ANGLE SUPPORT
4	2	ESC-17086-MR	STRAIGHT, MIDDLE RISER
5	2	ESC-17348-BRE	STRAIGHT, BOTTOM RISER, END
6	1	ESC-17348-BWL	RADIUS, BACK WALL, LEFT
7	1	ESC-17348-BWR	RADIUS, BACK WALL, RIGHT
8	1	ESC-17348-CB	BRACE, CENTER SUPPORT
9	1	ESC-17348-MRL	STRAIGHT, MIDDLE RISER, LEFT
10	1	ESC-17348-MRR	STRAIGHT, MIDDLE RISER, RIGHT
11	1	ESC-17348-TRL	STRAIGHT, TOP RISER, LEFT
12	1	ESC-17348-TRR	STRAIGHT, TOP RISER, RIGHT
13	1	ESC-17348-TRS	BRACE, TOP RISER SUPPORT
14	1	ESC-17348-TRSL	BRACE, TOP RISER SUPPORT, LEFT
15	1	ESC-17348-TRSR	BRACE, TOP RISER SUPPORT, RIGHT
16	3	ESC-17793-B	BRACE, 2-RISER SUPPORT
17	2	ESC-17793-CSB	BRACE, 2-RISER SUPPORT
18	1	ESC-17793-SWL	RADIUS, SIDE WALL, LEFT
19	1	ESC-17793-SWR	RADIUS, SIDE WALL, RIGHT
20	4	M0065-1	PANEL Z-RIB W/BUTTRESS HOLES
21	0'	OPC-CONREC-XX	NOTCHED CONCRETE RECEPTOR
22	44'	OPC-CONREC-XXU	UN-NOTCHED CONCRETE RECEPTOR
23	47	SSC-1099-PFT	STEEL STEP PVC BEAD RETAINER (PER FT)

NOTE:
RIGHT AND LEFT SIDE
PARTS ARE SYMMETRICAL.



**PLEASE REFER TO
CONTRACTOR NOTE**



TOP VIEW
LEFT BRACE CONNECTED TO
INSIDE FLANGE OF LEFT RISER

CONTRACTOR NOTE:
BACK FILL STEP/ SUNLEDGE AREA WITH COMPACTED
EARTH MATERIAL. FINISH STEP/ SUNLEDGE AREA WITH 2"
OF HARDEN FLOOR MATERIAL TO MATCH REQUIRED
DEPTH (FLUSH WITH TOP OF BEAD RECEIVER).

CONTRACTOR NOTE:
CONTRACTOR IS RESPONSIBLE FOR SECURING ALL
RISERS INTO PLACE WITH REBAR HOLES BEFORE
BACKFILLING THIS CUSTOM STEP

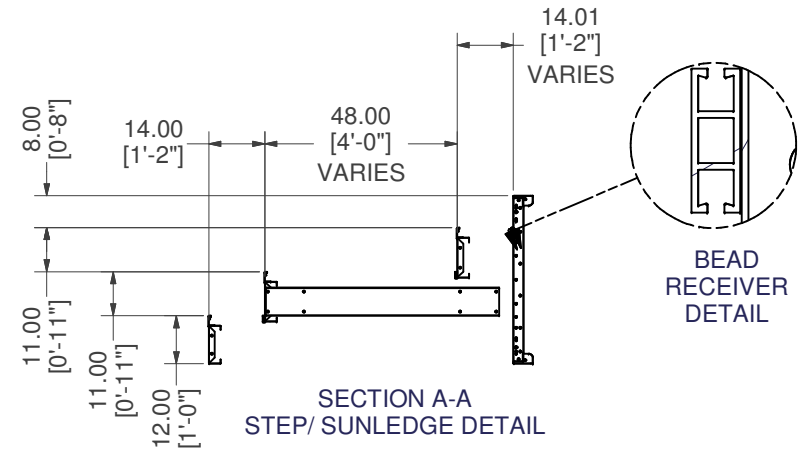
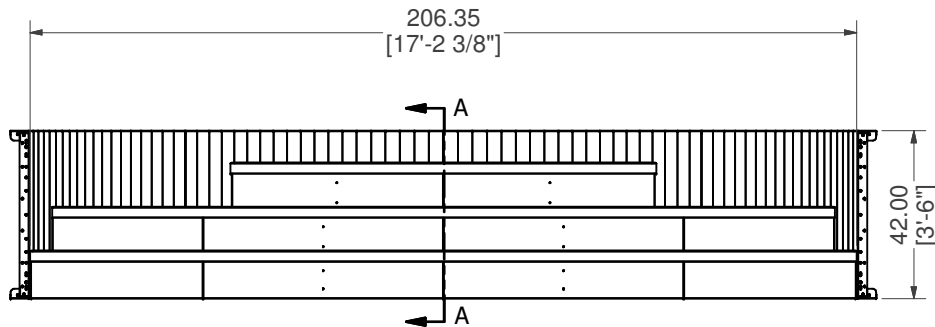
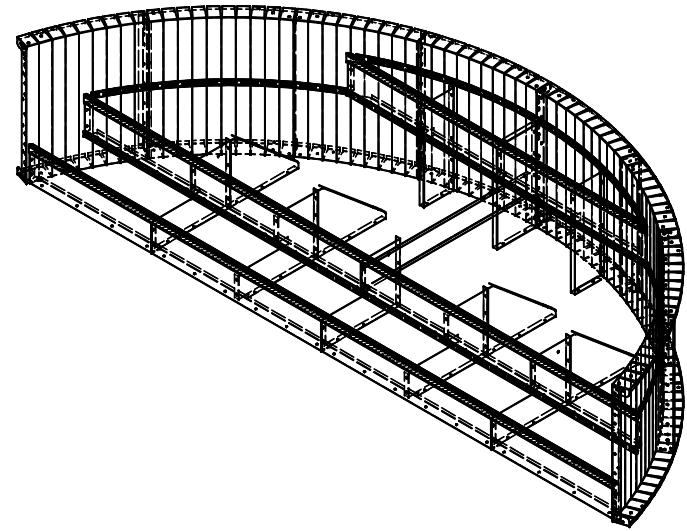
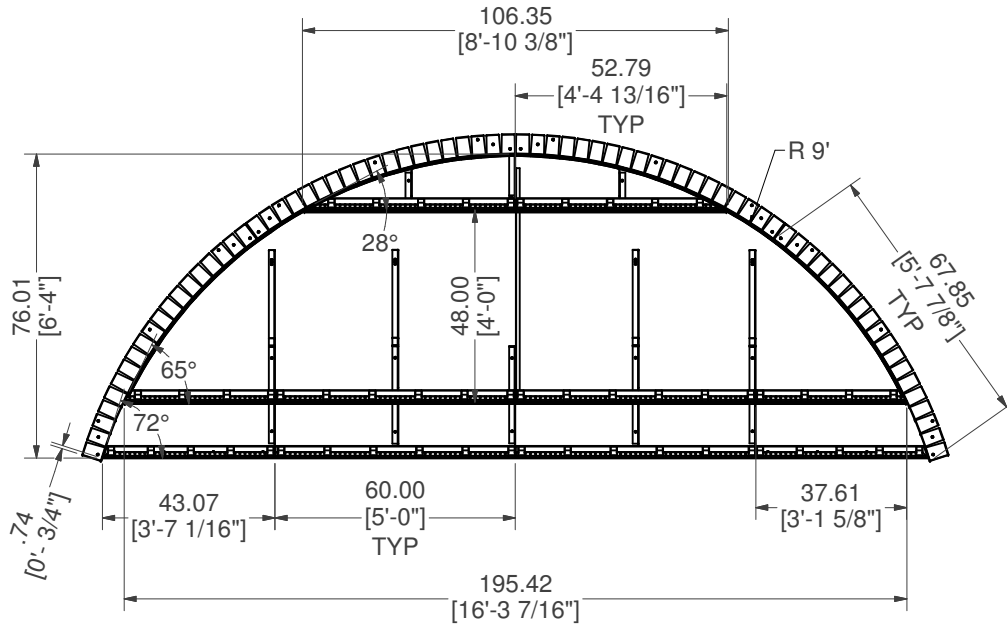
KEEP BEAD RECEIVER ATTACHED TO THE RISERS AND
WALL PANELS FOR SHIPPING. A TOTAL OF 564" (47')
OF BEAD RECEIVER IS REQUIRED.

CONTRACTOR MUST FIELD FIT ALL CONCRETE RECEPTOR.
TOTALS REQUIRED FOR THIS CUSTOM PRODUCT APPLICATION.
OPC-CONREC-XX (NOTCHED) = 0" (0')
OPC-CONREC-XXU (UN-NOTCHED) = 528" (44')
COP-KCVRET-W-1 (STIFFENER) = 52

17'-2 1/4" X 6'-4" X 9'R OPEN TOP STEP W/ 4' MIDDLE TREAD

PART #: ESC-17793	WEIGHT: 647.00 lbmass	MACHINE TIME: N/A	FILE/DIRECTORY: C:\Vault\FTW\Design\CUSTOM STEPS\ESC-17000-17999\ESC-17793.idw
	TOLERANCES EXCEPT AS NOTED 0/0 0.0 0.00 0.000 0' ±1/8 ±0.25 ±0.0625 ±0.03125 ±1/2"	MATERIAL:	DATE : 10/16/2023
	DRAWN BY: RK	SHEET : 1 OF 17	

NOTE:
RIGHT AND LEFT SIDE
PARTS ARE SYMMETRICAL.

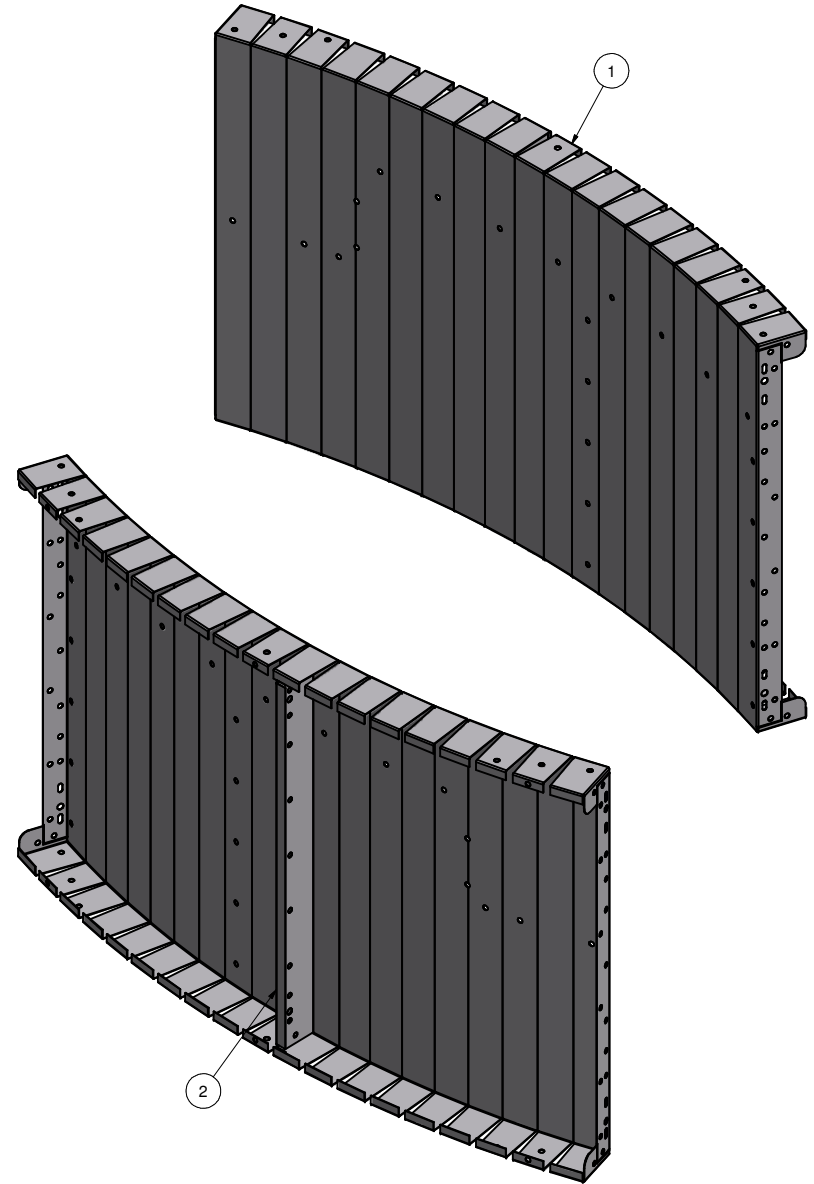
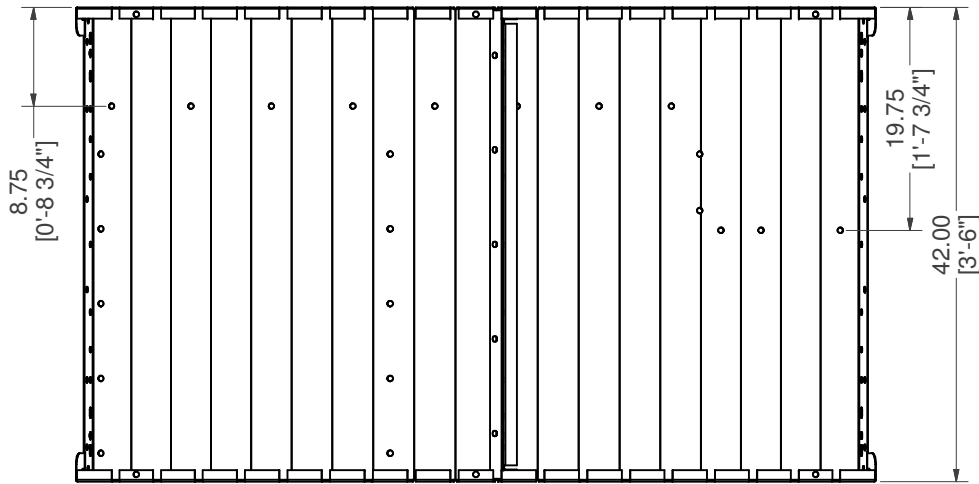
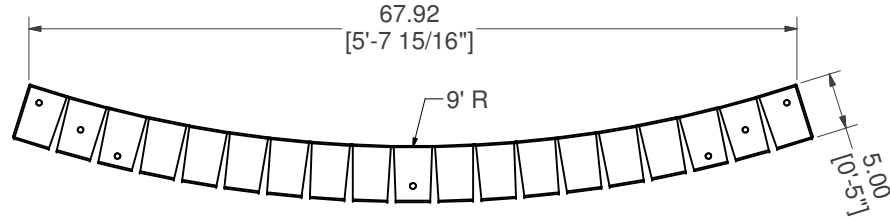


17'-2 1/4" X 6'-4" X 9'R OPEN TOP STEP W/ 4' MIDDLE TREAD

PART #: ESC-17793	WEIGHT: 647.00 lbmass	MACHINE TIME: N/A	FILE/DIRECTORY: C:\Vault\FTWDesign\CUSTOM STEPS\ESC-17000-17999\ESC-17793.idw
	TOLERANCES EXCEPT AS NOTED	MATERIAL:	DATE: 10/16/2023
	0/0 0.0 0.00 0.000 0' ±1/8 ±0.25 ±0.0625 ±0.03125 ±1/2"	DRAWN BY: RK	SHEET: 2 OF 17


Parts List			
ITEM	QTY	PART NUMBER	DESCRIPTION
1	1	ESC-17348-BWL	RADIUS, BACK WALL, LEFT
2	1	M0065-1	PANEL Z-RIB W/BUTTRESS HOLES

WELDCODE #8



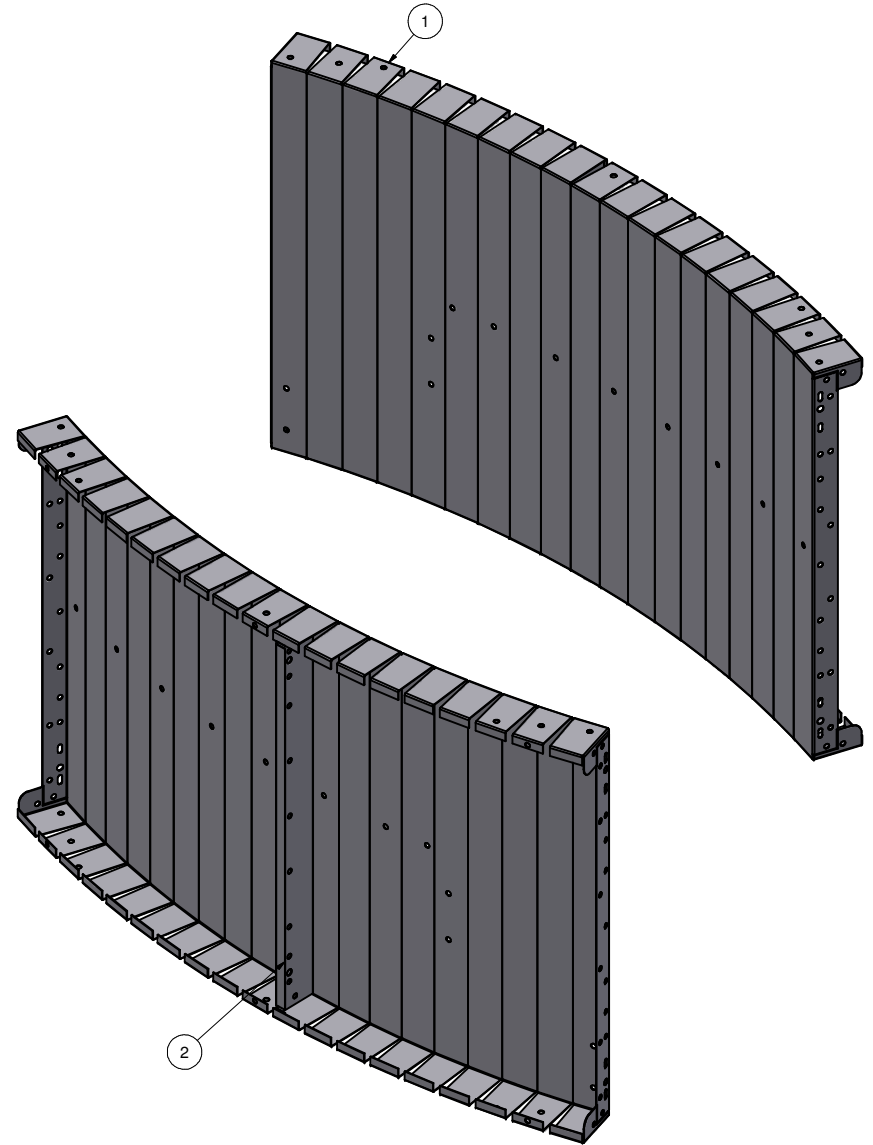
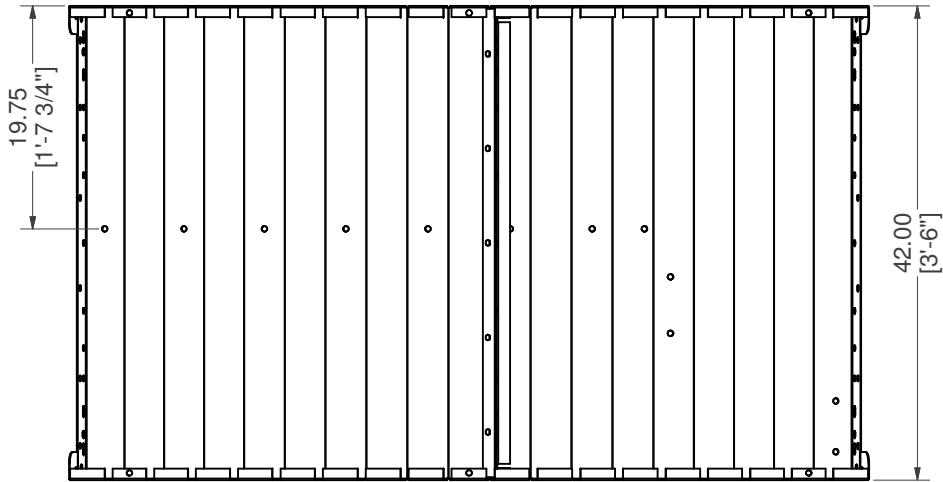
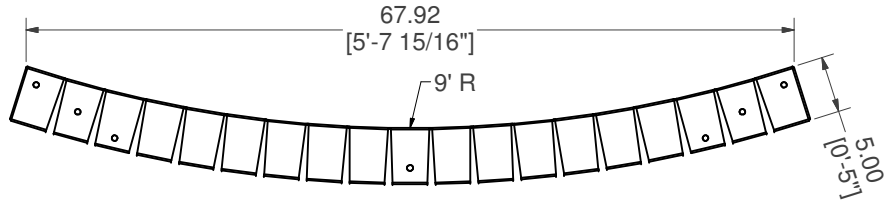
NOTE:
RIGHT SIDE PART IS SYMMETRICAL TO LEFT SIDE PART SHOWN.

RADIUS, BACK WALL, LEFT W/Z-RIB

PART #: ESC-17348-BWL 	WEIGHT: 82.64 lbmass	MACHINE TIME: N/A	FILE/DIRECTORY: C:\Vault\FTW\Design\CUSTOM STEPS\ESC-17000-17999\ESC-17793.idw
	TOLERANCES EXCEPT AS NOTED 0/0 0.0 0.00 0.000 0' ±1/8 ±0.25 ±0.0625 ±0.03125 ±1/2'	MATERIAL: DRAWN BY: RK	DATE: 10/16/2023 SHEET: 3 OF 17


Parts List			
ITEM	QTY	PART NUMBER	DESCRIPTION
1	1	ESC-17793-SWL	RADIUS, SIDE WALL, LEFT
2	1	M0065-1	PANEL Z-RIB W/BUTTRESS HOLES

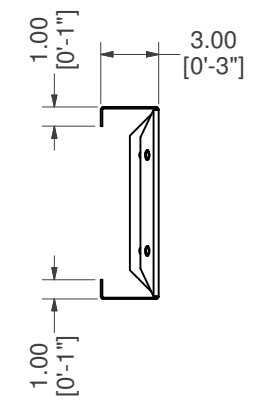
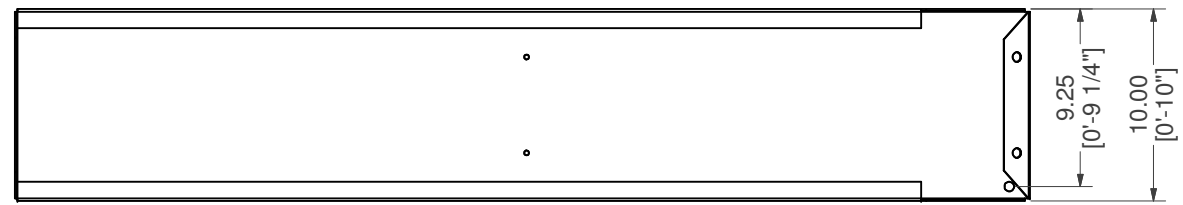
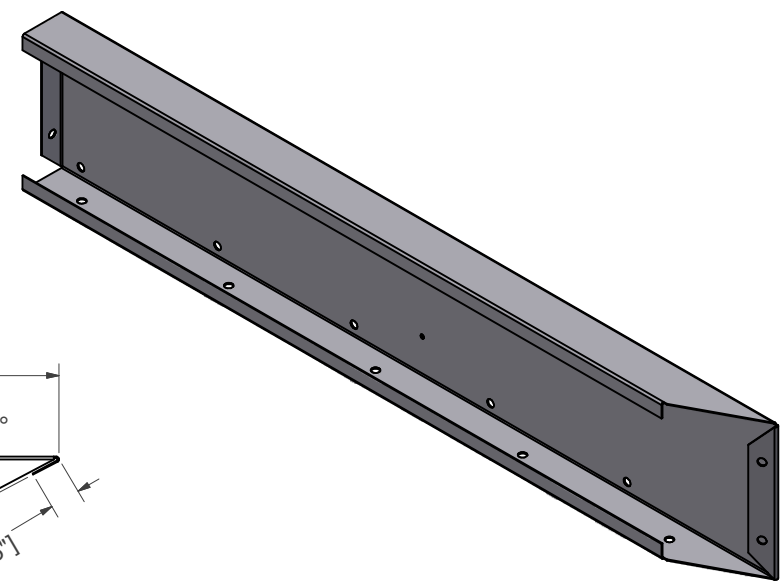
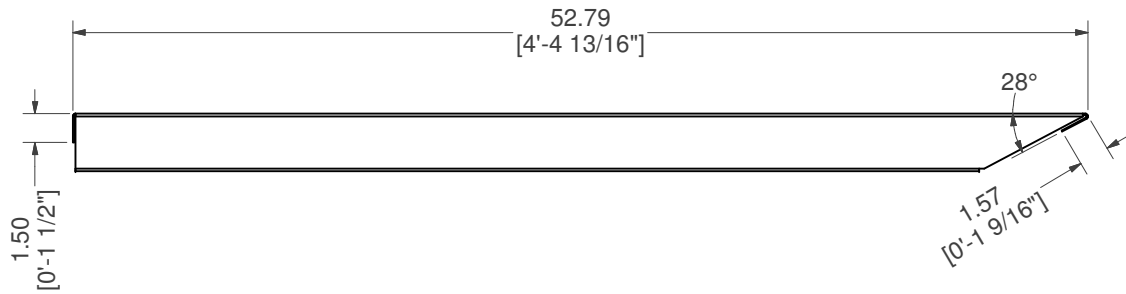
WELDCODE #8



NOTE:
RIGHT SIDE PART IS SYMMETRICAL TO LEFT SIDE PART SHOWN.


RADIUS, SIDE WALL, LEFT W/Z-RIB

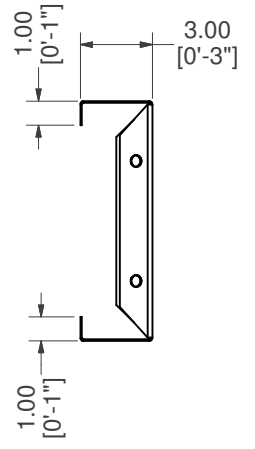
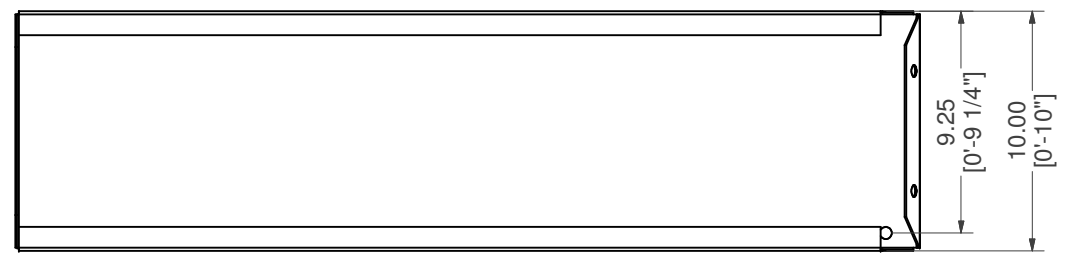
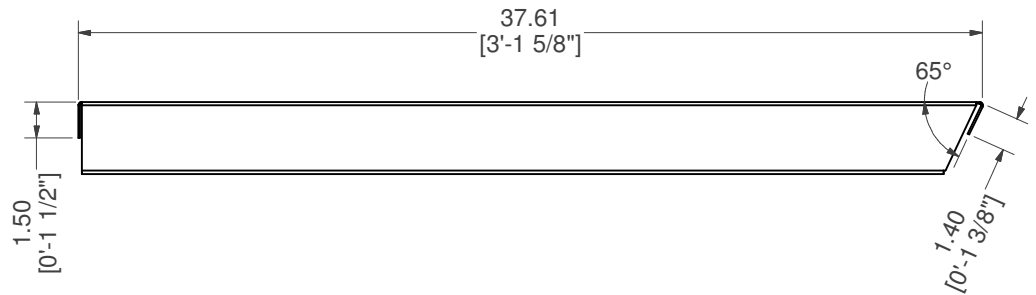
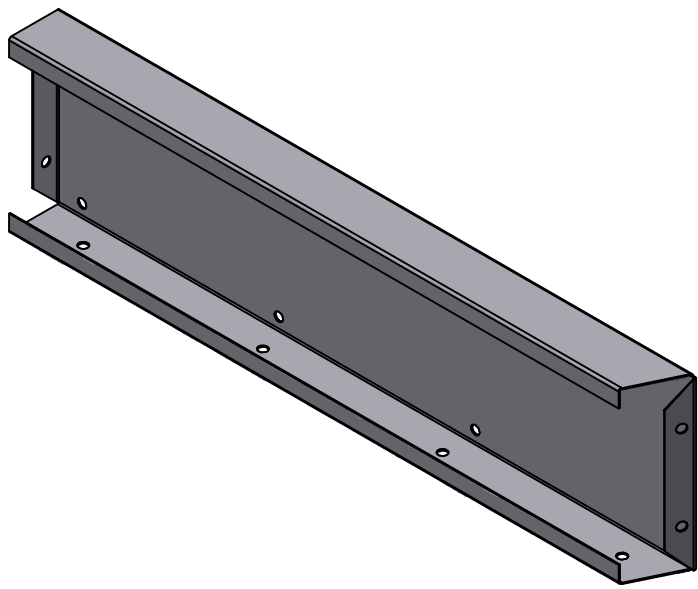
PART #: ESC-17793-SWL 	WEIGHT: 82.68 lbmass	MACHINE TIME: N/A	FILE/DIRECTORY: C:\Vault\FTW\Design\CUSTOM STEPS\ESC-17000-17999\ESC-17793.idw
	TOLERANCES EXCEPT AS NOTED 0/0 0.0 0.00 0.000 0' ±1/8 ±0.25 ±0.0625 ±0.03125 ±1/2'	MATERIAL: DRAWN BY: RK	DATE: 10/16/2023 SHEET: 4 OF 17



NOTE:
RIGHT SIDE PART IS SYMMETRICAL TO LEFT SIDE PART SHOWN.


STRAIGHT, TOP RISER, LEFT

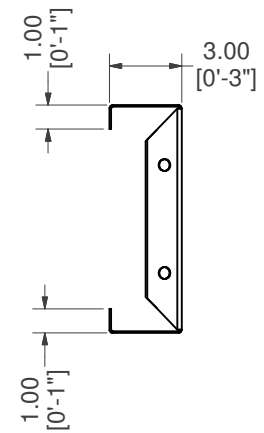
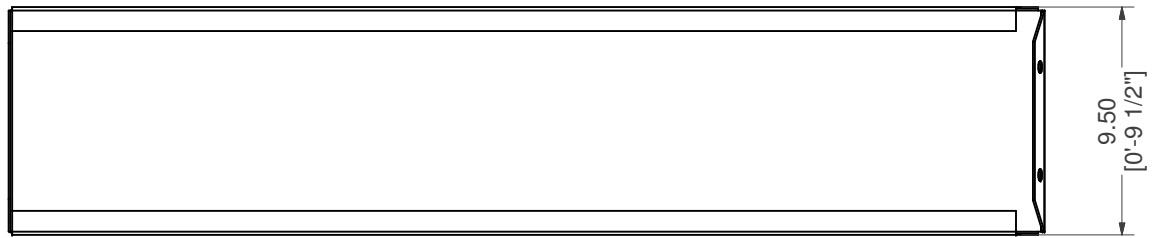
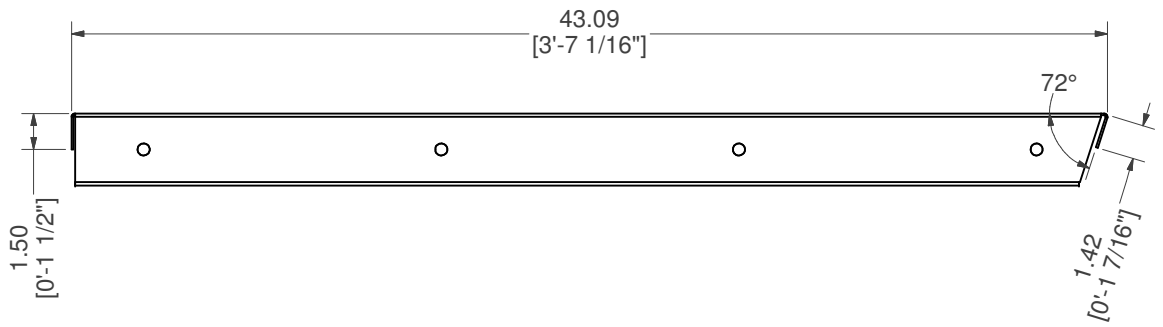
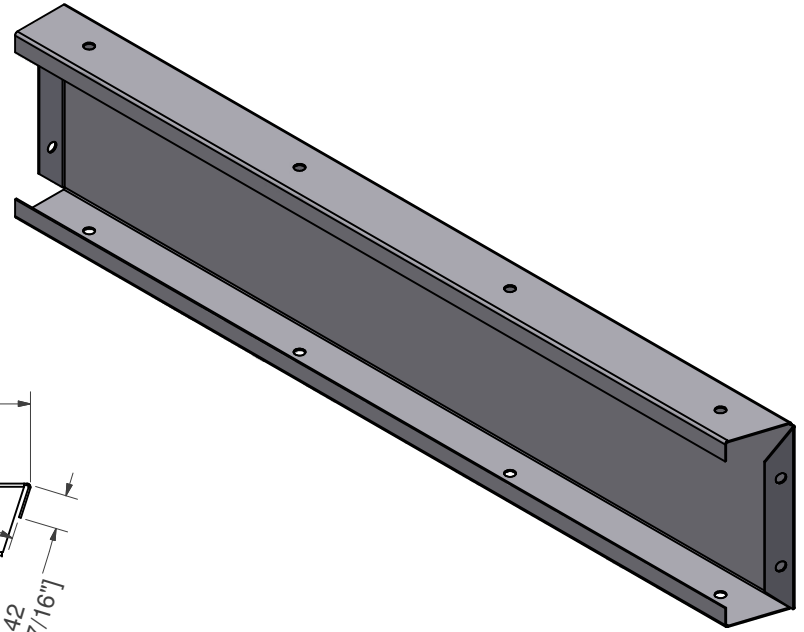
PART #: ESC-17348-TRL 	WEIGHT: 18.68 lbmass	MACHINE TIME: N/A	FILE/DIRECTORY: C:\Vault\FTW\Design\CUSTOM STEPS\ESC-17000-17999\ESC-17793.idw	
	TOLERANCES EXCEPT AS NOTED 0/0 0.0 0.00 0.000 0' ±1/8 ±0.25 ±0.0625 ±0.03125 ±1/2'	MATERIAL: 14 GA. GALVANIZED	DATE : 10/16/2023	NOTES:
DRAWN BY: RK	SHEET : 5 OF 17			




NOTE:
RIGHT SIDE PART IS SYMMETRICAL TO LEFT SIDE PART SHOWN.

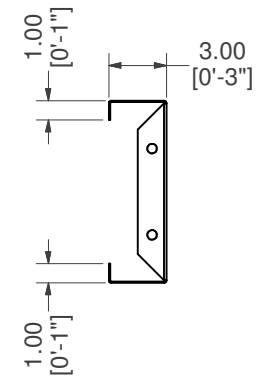
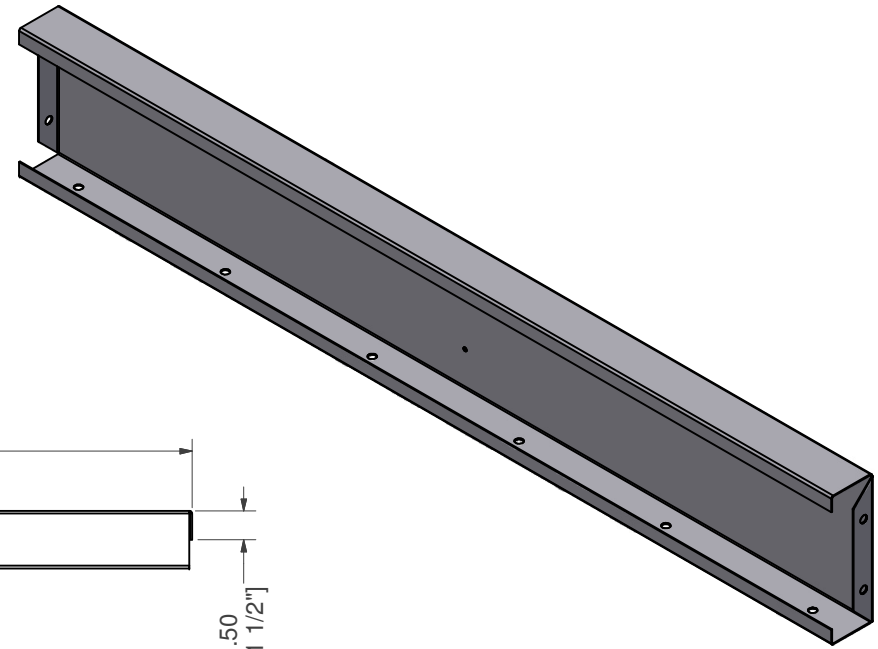
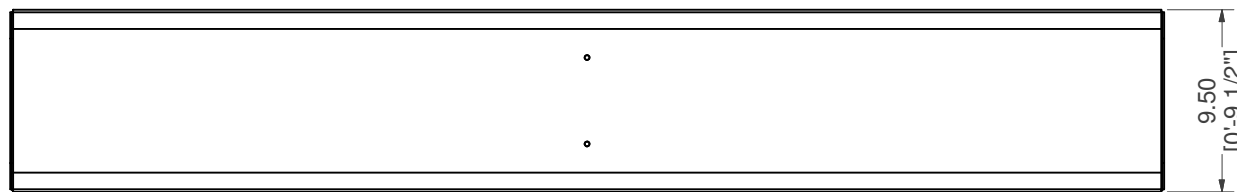
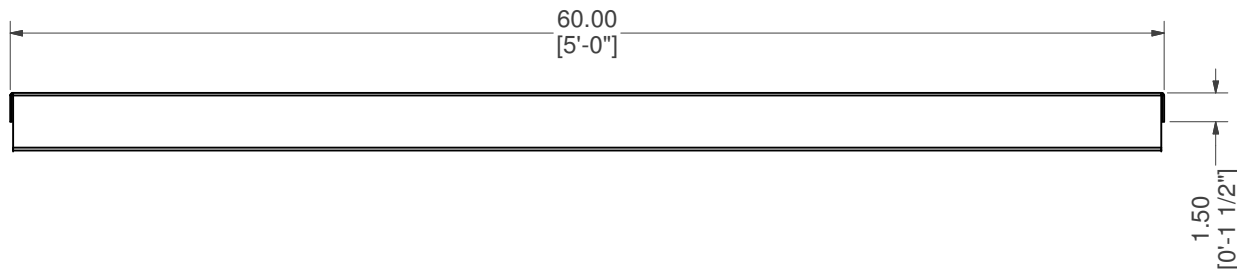
STRAIGHT, MIDDLE RISER, LEFT

PART #: ESC-17348-MRL	WEIGHT: 13.64 lbmass	MACHINE TIME: N/A	FILE/DIRECTORY: C:\Vault\FTW\Design\CUSTOM STEPS\ESC-17000-17999\ESC-17793.idw	
	TOLERANCES EXCEPT AS NOTED 0/0 0.0 0.00 0.000 0' ±1/8 ±0.25 ±0.0625 ±0.03125 ±1/2'	MATERIAL: 14 GA. GALVANIZED	DATE : 10/16/2023	NOTES:
		DRAWN BY: RK	SHEET : 6 OF 17	




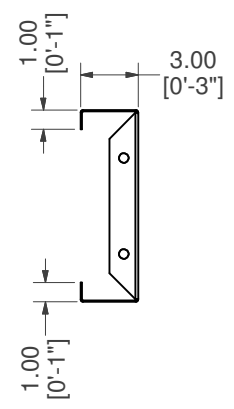
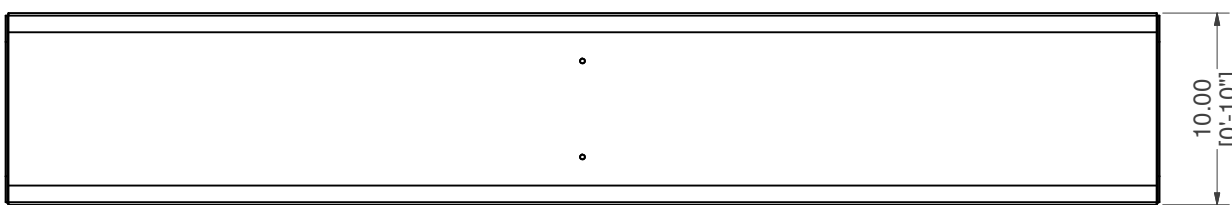
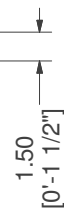
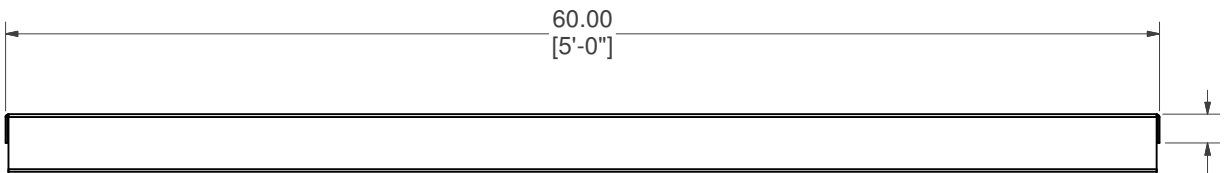
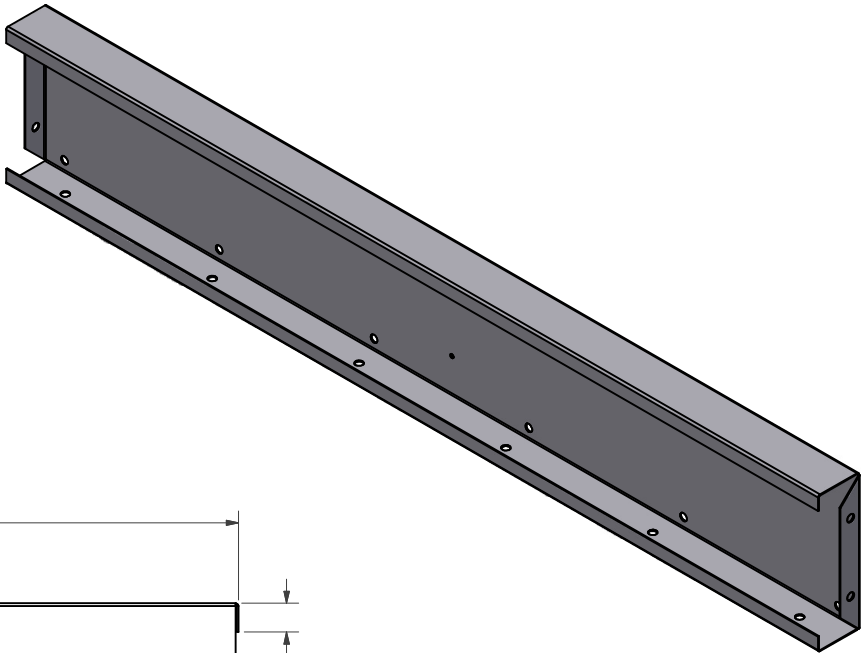
STRAIGHT, BOTTOM RISER, END

PART #: ESC-17348-BRE 	WEIGHT: 15.17 lbmass	MACHINE TIME: N/A	FILE/DIRECTORY: C:\Vault\FTW\Design\CUSTOM STEPS\ESC-17000-17999\ESC-17793.idw
	TOLERANCES EXCEPT AS NOTED 0/0 0.0 0.00 0.000 0' ±1/8 ±0.25 ±0.0625 ±0.03125 ±1/2'	MATERIAL: 14 GA. GALVANIZED	DATE : 10/16/2023
DRAWN BY: RK	SHEET : 7 OF 17		




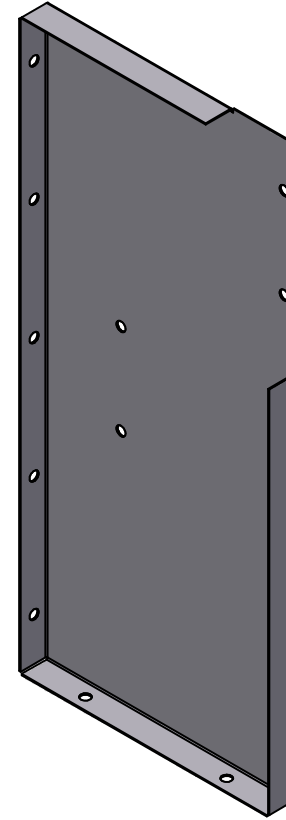
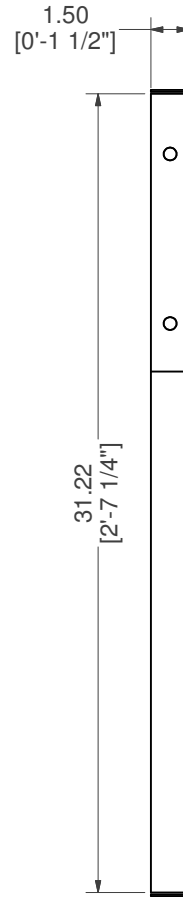
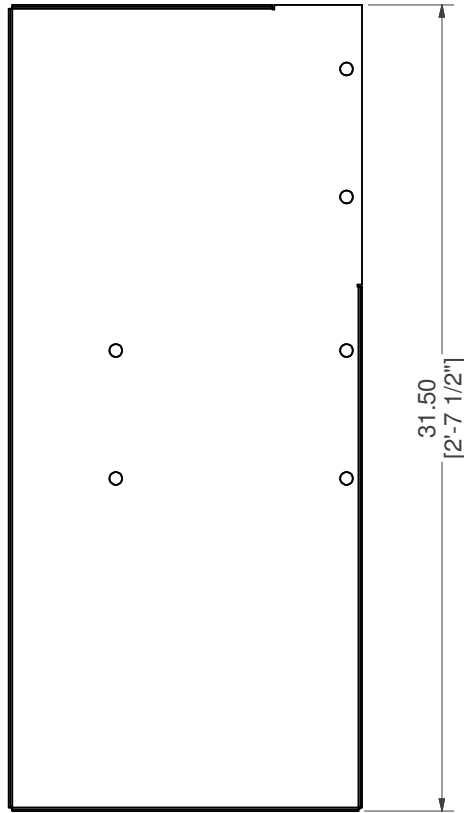
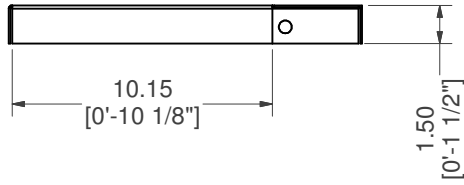
STRAIGHT, BOTTOM RISER

PART #: ESC-7053-BR	WEIGHT: 21.13 lbmass	MACHINE TIME: N/A	FILE/DIRECTORY: C:\Vault\FTW\Design\CUSTOM STEPS\ESC-17000-17999\ESC-17793.idw
	TOLERANCES EXCEPT AS NOTED	MATERIAL: 14 GA. GALVANIZED	DATE: 10/16/2023
	0/0 0.0 0.00 0.000 0'	DRAWN BY: RK	SHEET: 8 OF 17
	±1/8 ±0.25 ±0.0625 ±0.03125 ±1/2'		NOTES:



STRAIGHT, MIDDLE RISER

PART #: ESC-17086-MR	WEIGHT: 21.74 lbmass	MACHINE TIME: N/A	FILE/DIRECTORY: C:\Vault\FTW\Design\CUSTOM STEPS\ESC-17000-17999\ESC-17793.idw
	TOLERANCES EXCEPT AS NOTED 0/0 0.0 0.00 0.000 0' ±1/8 ±0.25 ±0.0625 ±0.03125 ±1/2'	MATERIAL: 14 GA. GALVANIZED DRAWN BY: RK	DATE : 10/16/2023 SHEET : 9 OF 17
NOTES:			



BRACE, TOP RISER SUPPORT

PART #: ESC-17348-TRS

WEIGHT:
10.89 lbmass

MACHINE TIME:
N/A

FILE/DIRECTORY:
C:\Vault\FTW\Design\CUSTOM STEPS\ESC-17000-17999\ESC-17793.idw



TOLERANCES EXCEPT AS NOTED
0/0 0.0 0.00 0.000 0'
±1/8 ±0.25 ±0.0625 ±0.03125 ±1/2'

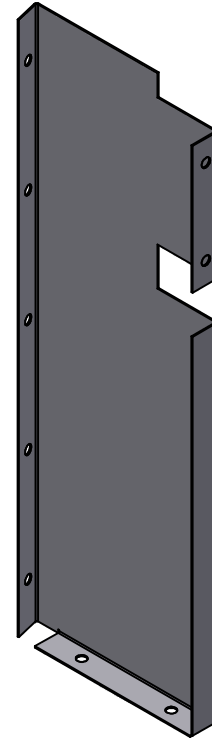
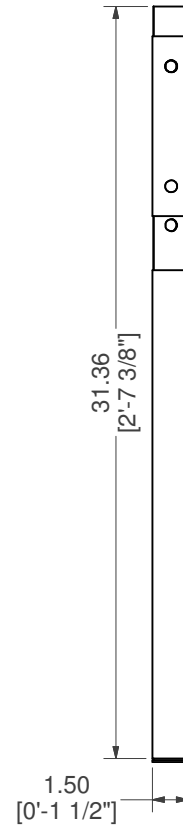
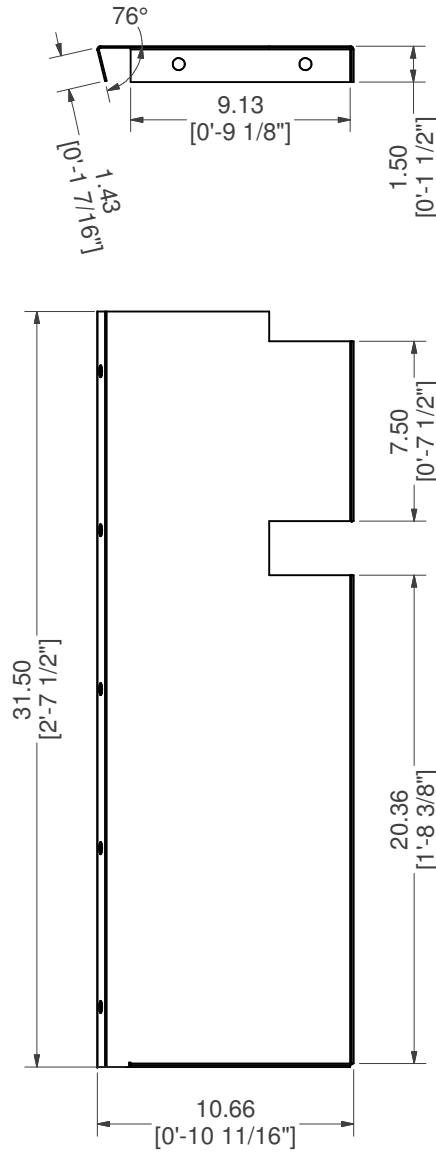
MATERIAL:
14 GA. GALVANIZED

DATE : 10/16/2023

NOTES:


DRAWN BY: RK

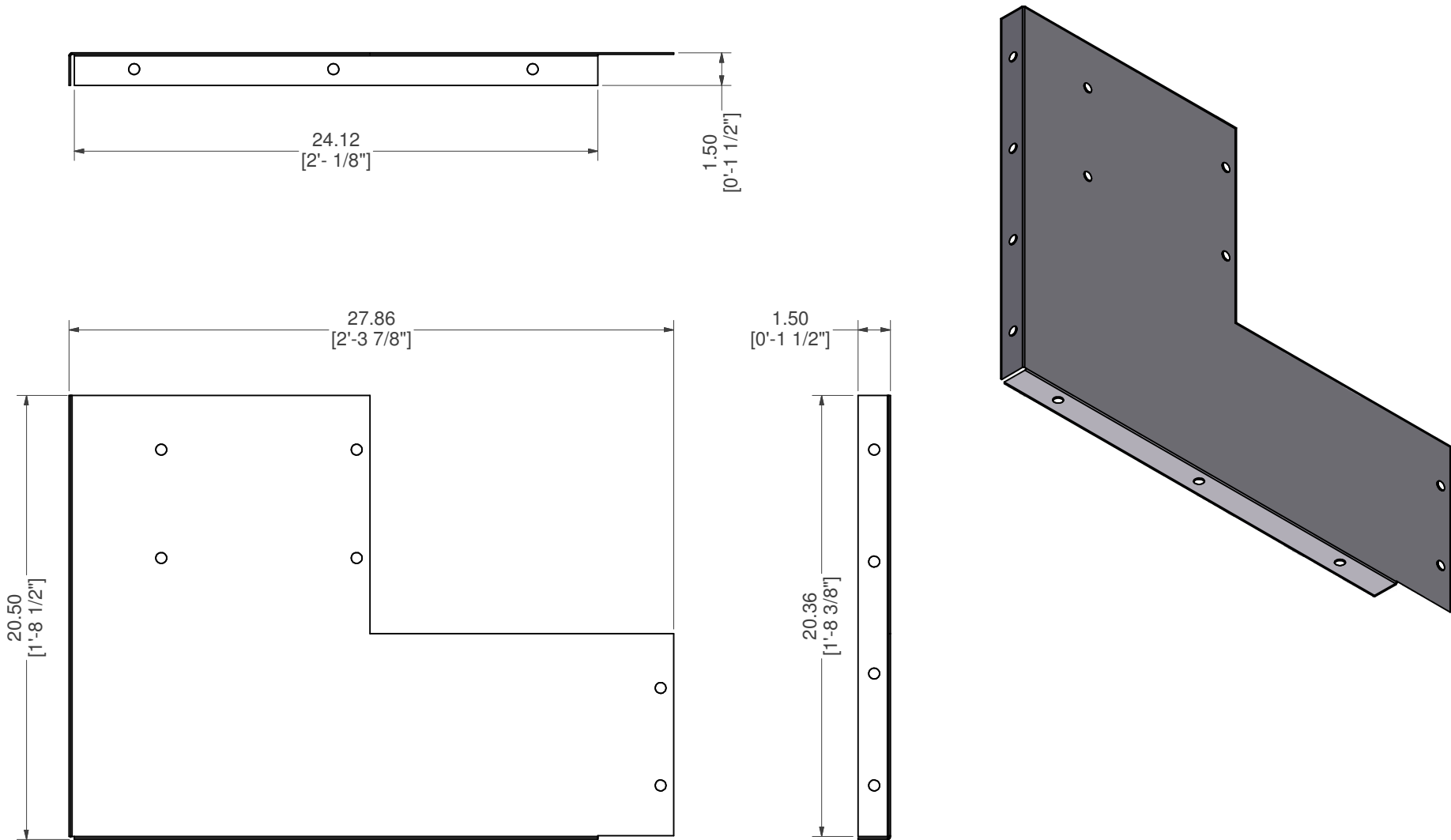
SHEET : 10 OF 17




NOTE:
RIGHT SIDE PART IS SYMMETRICAL TO LEFT SIDE PART SHOWN.

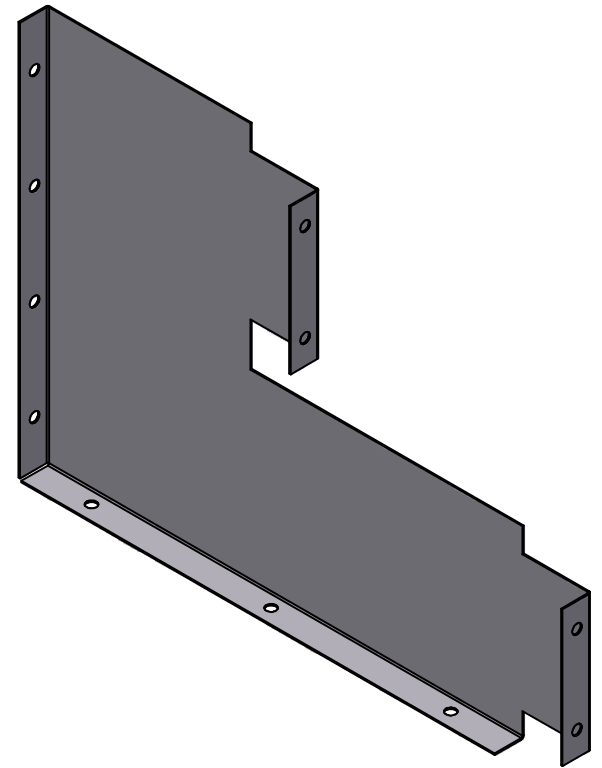
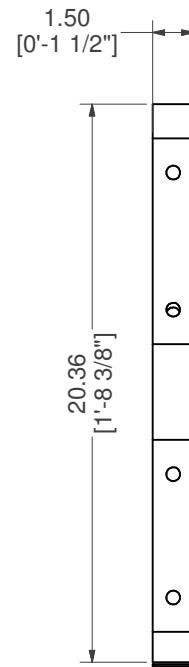
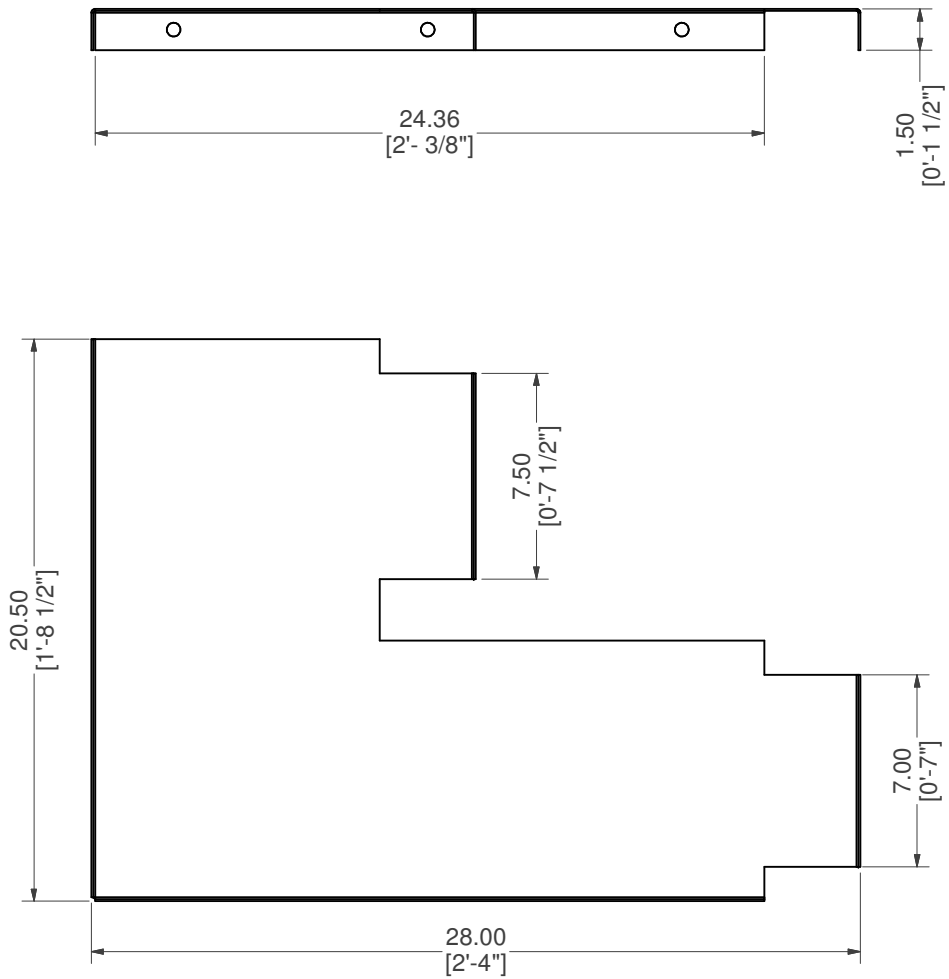
BRACE, TOP RISER SUPPORT, LEFT

PART #: ESC-17348-TRSL 	WEIGHT: 8.46 lbmass	MACHINE TIME: N/A	FILE/DIRECTORY: C:\Vault\FTW\Design\CUSTOM STEPS\ESC-17000-17999\ESC-17793.idw
	TOLERANCES EXCEPT AS NOTED 0/0 0.0 0.00 0.000 0' ±1/8 ±0.25 ±0.0625 ±0.03125 ±1/2'	MATERIAL: 14 GA. GALVANIZED	DATE : 10/16/2023
DRAWN BY: RK	SHEET : 11 OF 17		




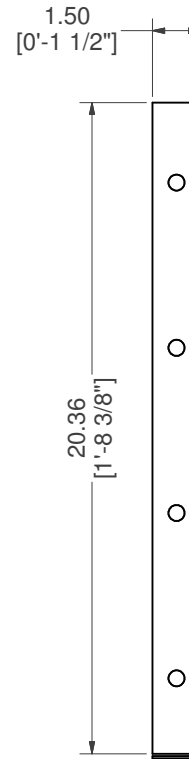
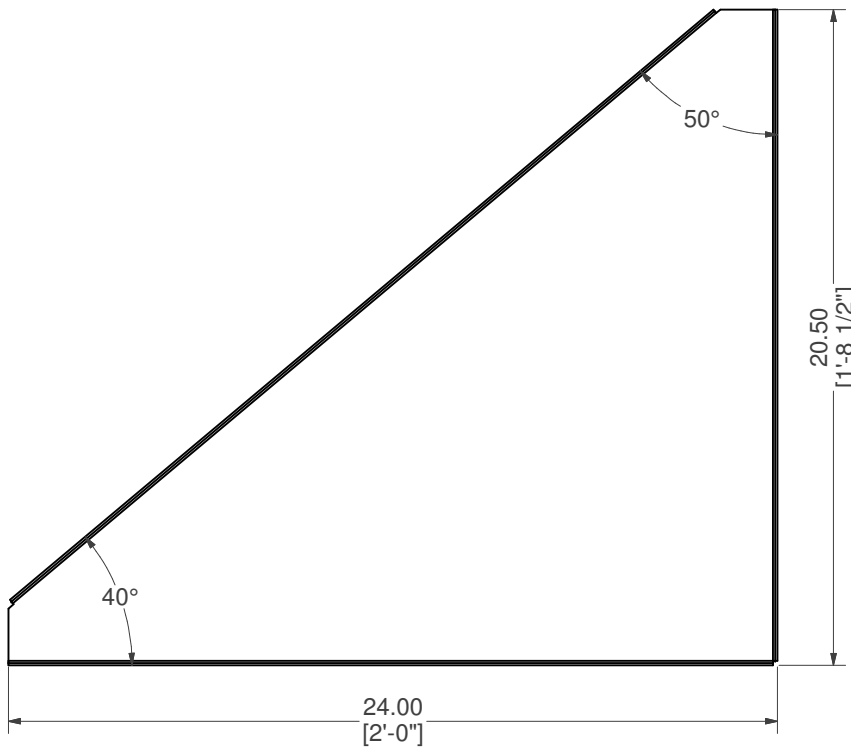
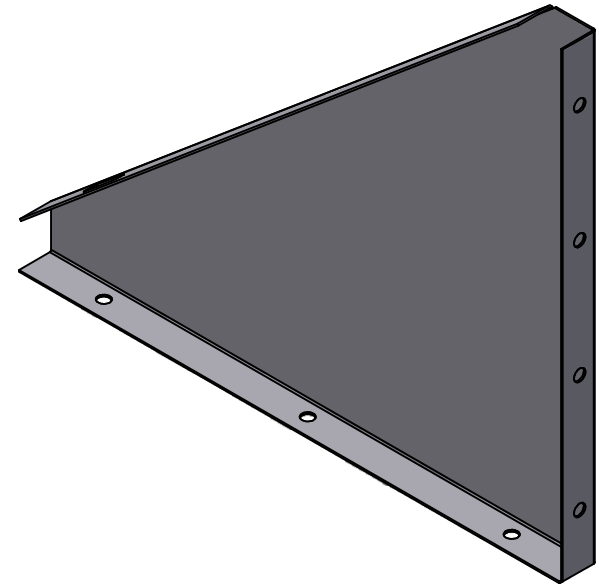
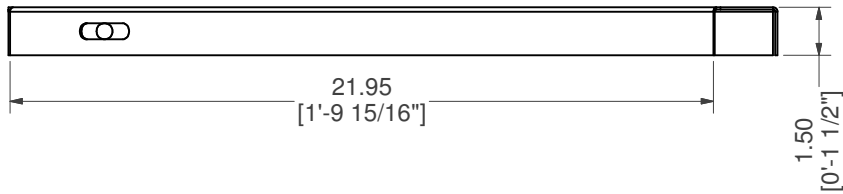
BRACE, 2-RISER SUPPORT

PART #: ESC-17793-B	WEIGHT: 9.66 lbmass	MACHINE TIME: N/A	FILE/DIRECTORY: C:\Vault\FTW\Design\CUSTOM STEPS\ESC-17000-17999\ESC-17793.idw
	TOLERANCES EXCEPT AS NOTED 0/0 0.0 0.00 0.000 0' ±1/8 ±0.25 ±0.0625 ±0.03125 ±1/2'	MATERIAL: 14 GA. GALVANIZED DRAWN BY: RK	DATE : 10/16/2023 SHEET : 12 OF 17 NOTES:



BRACE, 2-RISER SUPPORT

PART #: ESC-17793-CSB	WEIGHT: 9.73 lbmass	MACHINE TIME: N/A	FILE/DIRECTORY: C:\Vault\FTW\Design\CUSTOM STEPS\ESC-17000-17999\ESC-17793.idw
	TOLERANCES EXCEPT AS NOTED	MATERIAL: 14 GA. GALVANIZED	DATE : 10/16/2023
	0/0 0.0 0.00 0.000 0'	DRAWN BY: RK	SHEET : 13 OF 17
	±1/8 ±0.25 ±0.0625 ±0.03125 ±1/2'		NOTES:



BRACE, MIDDLE RISER ANGLE SUPPORT

PART #: ESC-8867-BUB

WEIGHT:
7.86 lbmass

MACHINE TIME:
N/A

FILE/DIRECTORY:
C:\Vault\FTW\Design\CUSTOM STEPS\ESC-17000-17999\ESC-17793.idw



TOLERANCES EXCEPT AS NOTED
0/0 0.0 0.00 0.000 0°
±1/8 ±0.25 ±0.0625 ±0.03125 ±1/2'

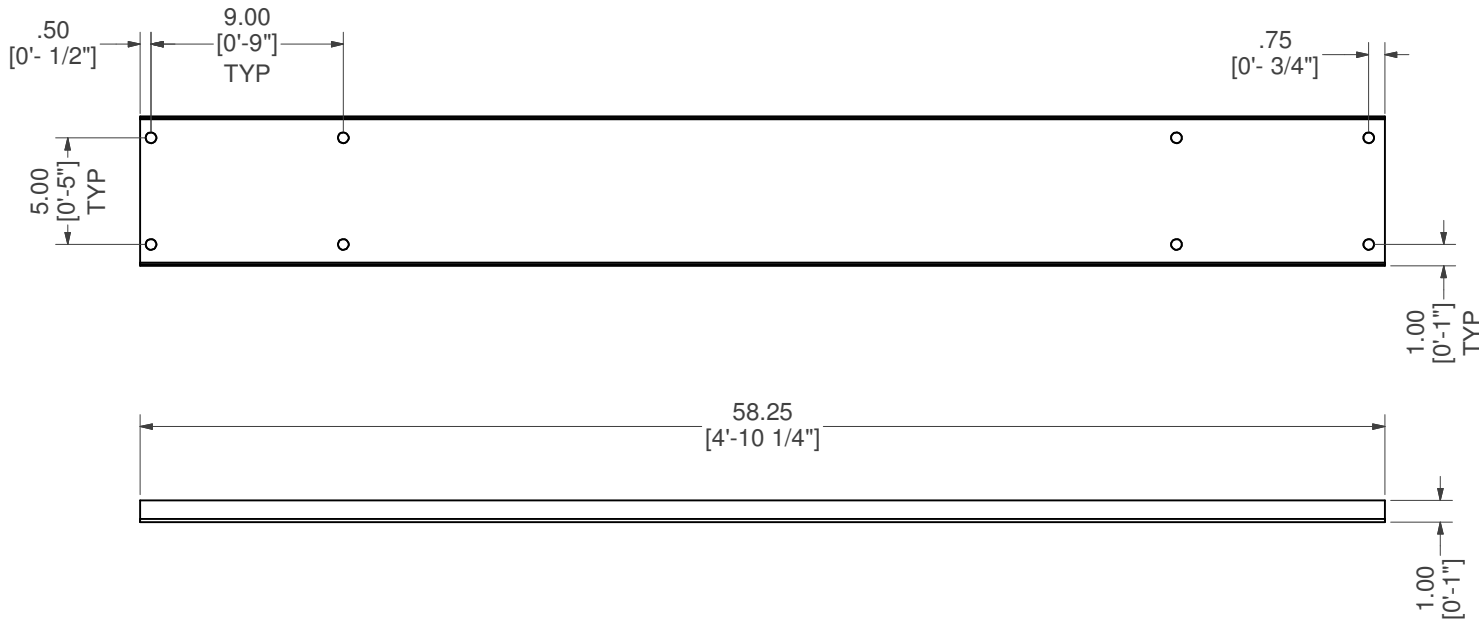
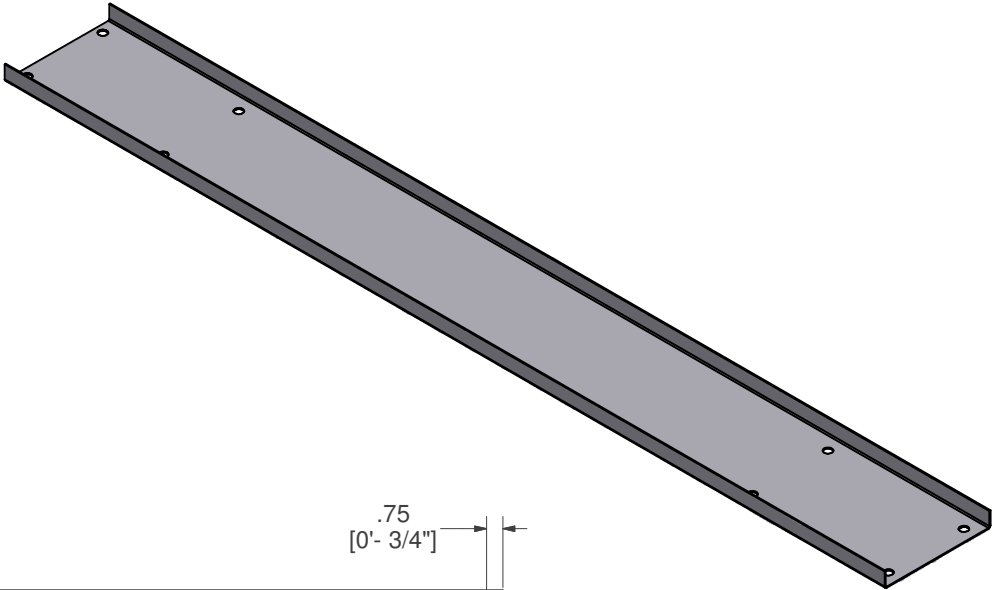
MATERIAL:
14 GA. GALVANIZED

DATE: 10/16/2023


NOTES:

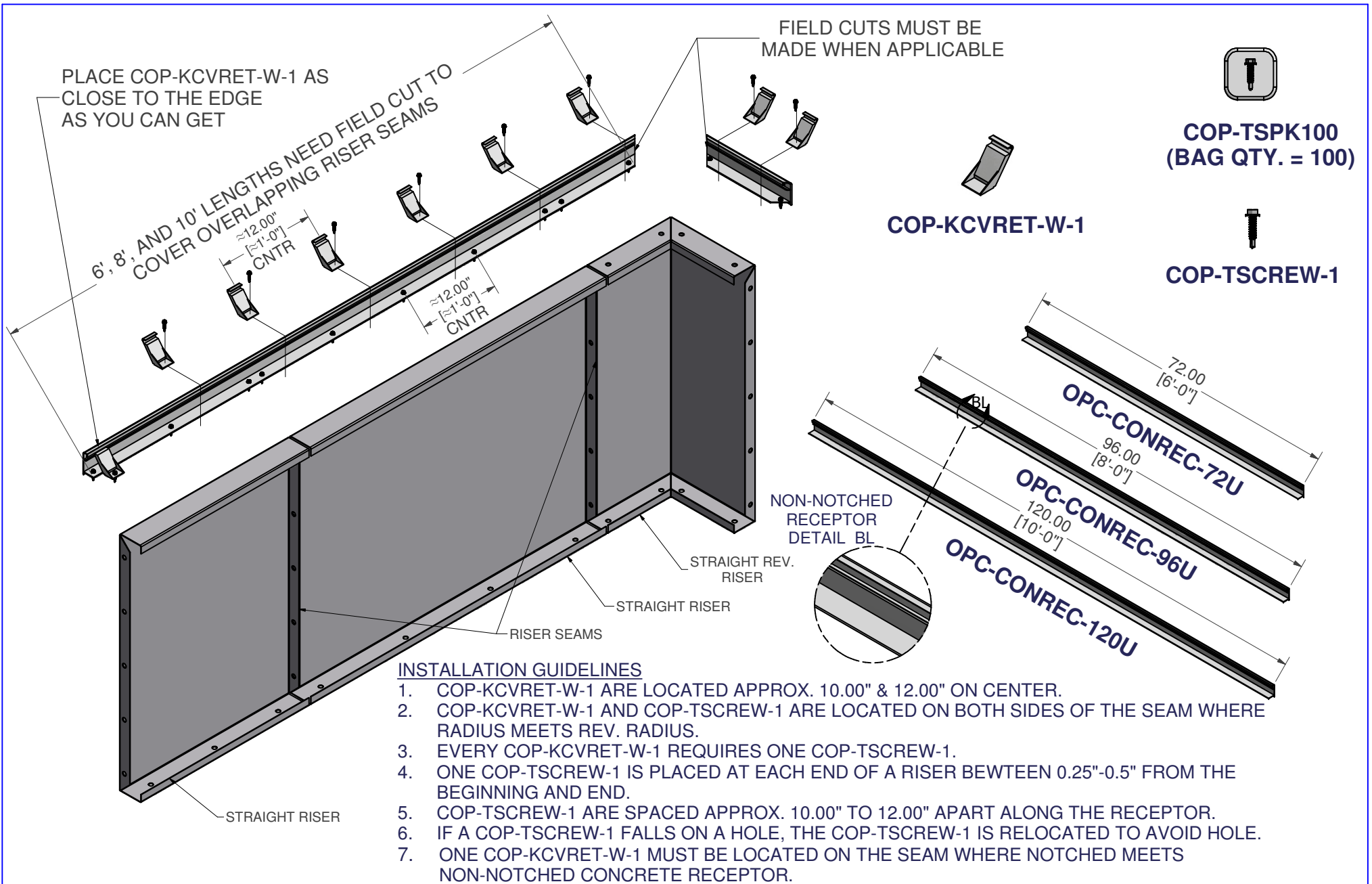
DRAWN BY: RK

SHEET: 14 OF 17



BRACE, CENTER SUPPORT

PART #: ESC-17348-CB	WEIGHT: 10.35 lbmass	MACHINE TIME: N/A	FILE/DIRECTORY: C:\Vault\FTW\Design\CUSTOM STEPS\ESC-17000-17999\ESC-17793.idw
	TOLERANCES EXCEPT AS NOTED 0/0 0.0 0.00 0.000 0' ±1/8 ±0.25 ±0.0625 ±0.03125 ±1/2'	MATERIAL: 14 GA. GALVANIZED	DATE : 10/16/2023
		DRAWN BY: RK	SHEET : 15 OF 17
NOTES:			



NON-NOTCHED CONCRETE RECEPTOR FIELD INSTALLATION

PART #: STRAIGHT CONCRETE RECEPTOR	WEIGHT: 77.51 lbmass	MACHINE TIME: N/A	FILE/DIRECTORY: C:\Vault\FTW\Design\CUSTOM STEPS\ESC-17000-17999\ESC-17793.idw
	TOLERANCES EXCEPT AS NOTED 0/0 0.0 0.00 0.000 0' ±1/8 ±0.25 ±0.0625 ±0.03125 ±1/2"	MATERIAL:	DATE: 10/16/2023
	DRAWN BY: RK	SHEET: 16 OF 17	

PLACE COP-KCVRET-W-1 AT SEAMS WHERE STRAIGHT MEETS A RADIUS/REV. RADIUS.

PLACE COP-TSCREW-1 ON BOTH SIDES OF THE SEAMS.

PLACE COP-KCVRET-W-1 AS CLOSE TO THE END EDGE AS YOU CAN GET.

FIELD CUTS MUST BE MADE WHEN APPLICABLE

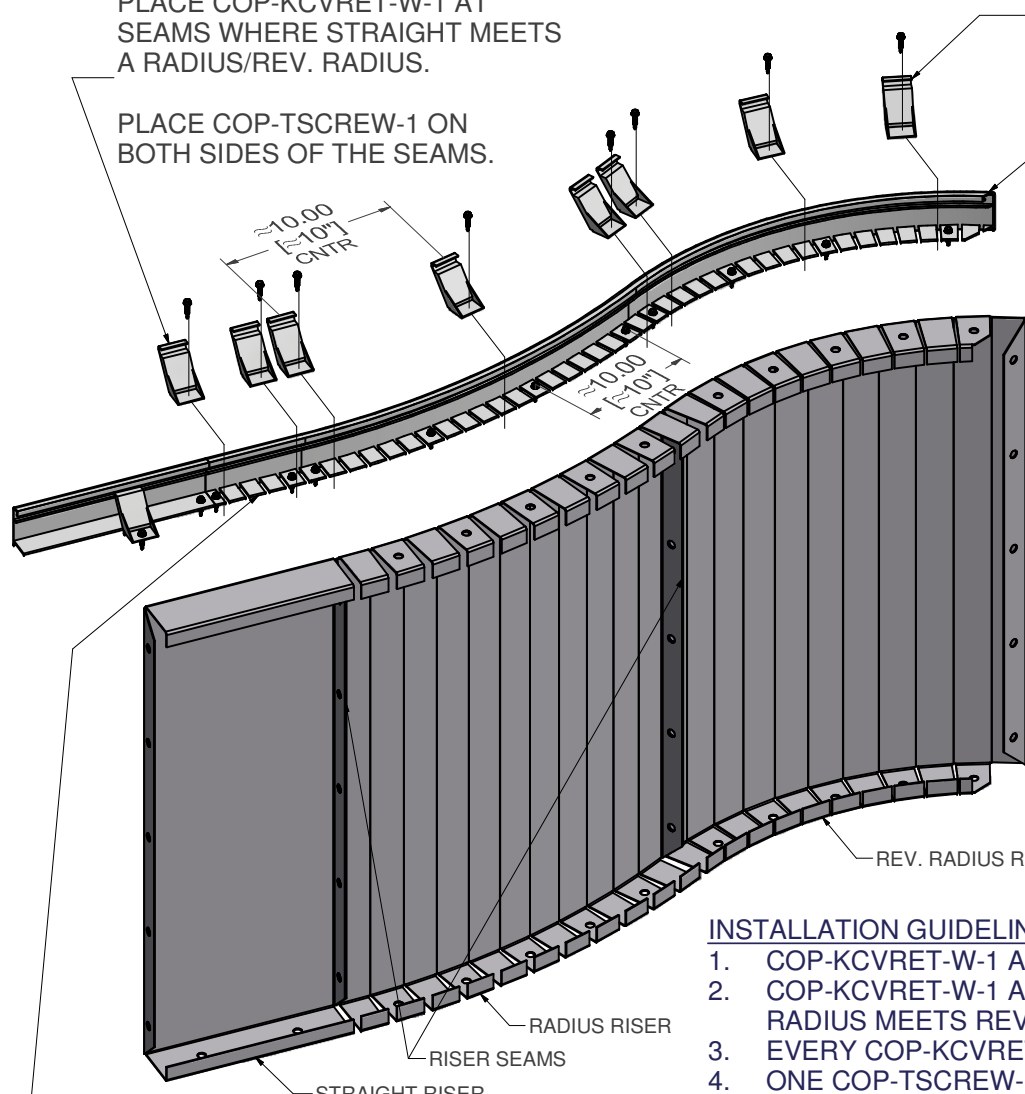


COP-TSPK100
(BAG QTY. = 100)

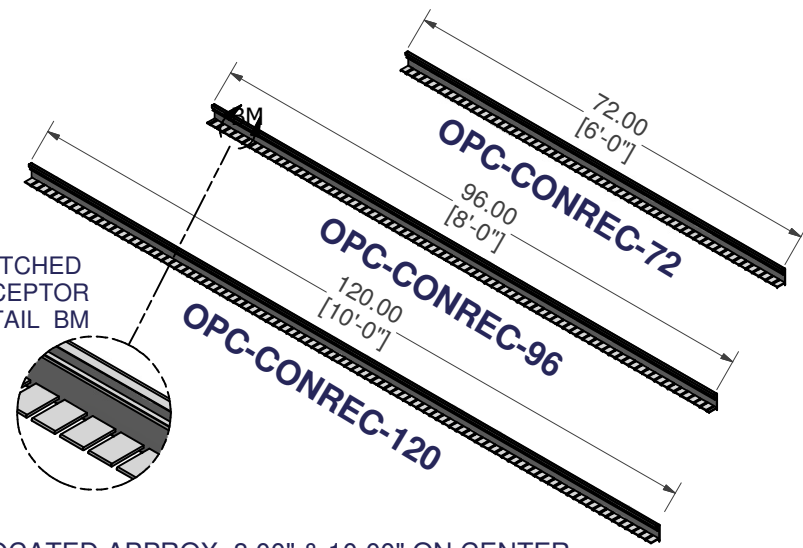


COP-TSCREW-1

COP-KCVRET-W-1



NOTCHED RECEPTOR DETAIL BM



ALLOW AN APPROX. OF 6.00" OF OVERLAP GOING FROM RADIUS/ REV. RADIUS TO A STRAIGHT RISER.

INSTALLATION GUIDELINES

1. COP-KCVRET-W-1 ARE LOCATED APPROX. 8.00" & 10.00" ON CENTER.
2. COP-KCVRET-W-1 AND COP-TSCREW-1 ARE LOCATED ON BOTH SIDES OF THE SEAM WHERE RADIUS MEETS REV. RADIUS.
3. EVERY COP-KCVRET-W-1 REQUIRES ONE COP-TSCREW-1.
4. ONE COP-TSCREW-1 IS PLACED AT EACH END OF A RISER BETWEEN 0.25"-0.5" FROM THE BEGINNING AND END.
5. COP-TSCREW-1 ARE SPACED APPROX. 8.00" TO 10.00" APART ALONG THE RECEPTOR.
6. IF A COP-TSCREW-1 FALLS ON A HOLE, THE COP-TSCREW-1 IS RELOCATED TO AVOID HOLE.
7. ONE COP-KCVRET-W-1 MUST BE LOCATED ON THE SEAM WHERE NOTCHED MEETS NON-NOTCHED CONCRETE RECEPTOR.

NOTCHED CONCRETE RECEPTOR FIELD INSTALLATION

PART #: REV-RADIUS CONCRETE RECEPTOR

WEIGHT:
52.49 lbmass

MACHINE TIME:
N/A

FILE/DIRECTORY:

C:\Vault\FTW\Design\CUSTOM STEPS\ESC-17000-17999\ESC-17793.idw



TOLERANCES EXCEPT AS NOTED
0/0 0.0 0.00 0.000 0'
±1/8 ±0.25 ±0.0625 ±0.03125 ±1/2"

MATERIAL:

DATE: 10/16/2023

NOTES:

DRAWN BY: RK

SHEET: 17 OF 17