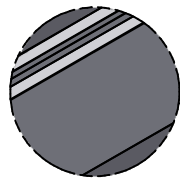
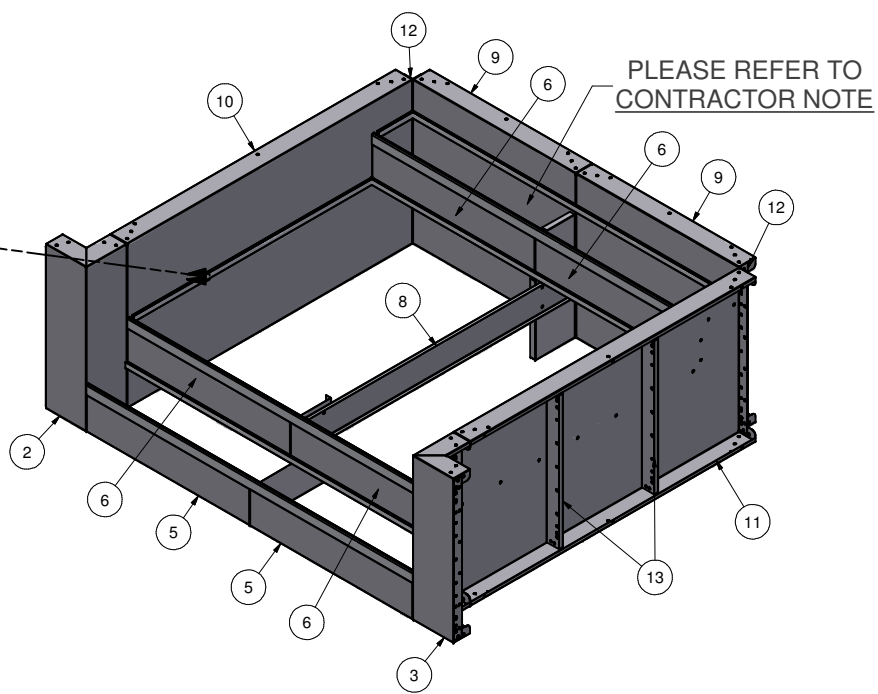


Parts List			
ITEM	QTY	PART NUMBER	DESCRIPTION
1	30	COP-KCVRET-W-1	COP COPING STIFFNER 1 5/8"-1PC
2	1	ESC-10698-SRWL	STR REV, WALL, LEFT
3	1	ESC-10698-SRWR	STR REV, WALL, RIGHT
4	1	ESC-17047-B	BRACE, 2-RISER SUPPORT
5	2	ESC-17070-BR	STRAIGHT, BOTTOM RISER
6	4	ESC-17070-MR	STRAIGHT, MIDDLE RISER
7	1	ESC-17226-TRB	BRACE, TOP RISER
8	1	ESC-17326-CB	BRACE, CENTER SUPPORT
9	2	ESC-17456-BW	STRAIGHT, BACK WALL
10	1	ESC-17854-SWL	STRAIGHT, SIDE WALL, LEFT
11	1	ESC-17854-SWR	STRAIGHT, SIDE WALL, RIGHT
12	2	IPC-AB90	90 DEGREE BRACE
13	4	M0065-1	PANEL Z-RIB W/BUTTRESS HOLES
14	0'	OPC-CONREC-XX	NOTCHED CONCRETE RECEPTOR
15	24'	OPC-CONREC-XXU	UN-NOTCHED CONCRETE RECEPTOR
16	38'	SSC-1099-PFT	STEEL STEP PVC BEAD RETAINER (PER FT)

NOTE:
RIGHT AND LEFT SIDE
PARTS ARE SYMMETRICAL.

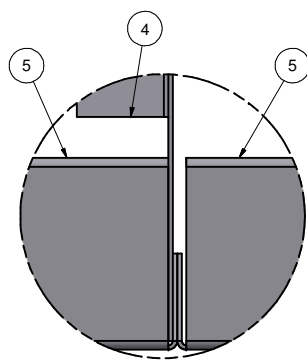
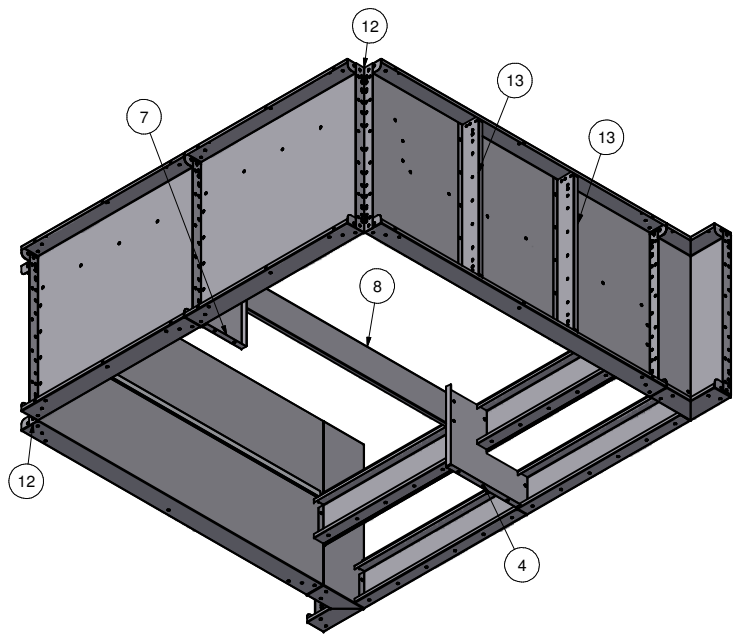


**BEAD
RECEIVER
DETAIL**



**PLEASE REFER TO
CONTRACTOR NOTE**

NOTE:
INCLUDE (2) PVC 6" RADIUS INSERT WITH THIS
STEP/ SUNLEDGE FOR CORNER, 8" LONG .



TOP VIEW
BRACE CONNECTED TO
INSIDE FLANGE OF LEFT RISER

CONTRACTOR NOTE:
CONTRACTOR IS RESPONSIBLE FOR SECURING ALL RISERS
INTO PLACE WITH REBAR HOLES BEFORE BACKFILLING THIS
CUSTOM STEP.

CONTRACTOR MUST FIELD FIT ALL CONCRETE RECEPTOR.
TOTALS REQUIRED FOR THIS CUSTOM PRODUCT APPLICATION.
OPC-CONREC-XX (NOTCHED) = 0" (0')
OPC-CONREC-XXU (UN-NOTCHED) = 288" (24')
COP-KCVRET-W-1 (STIFFENER) = 30

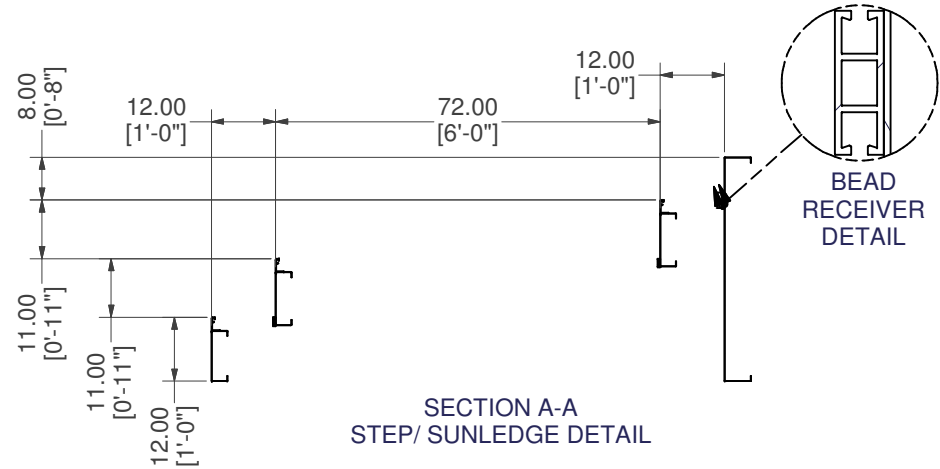
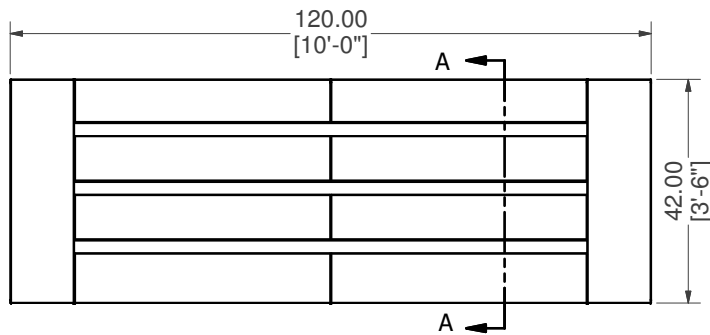
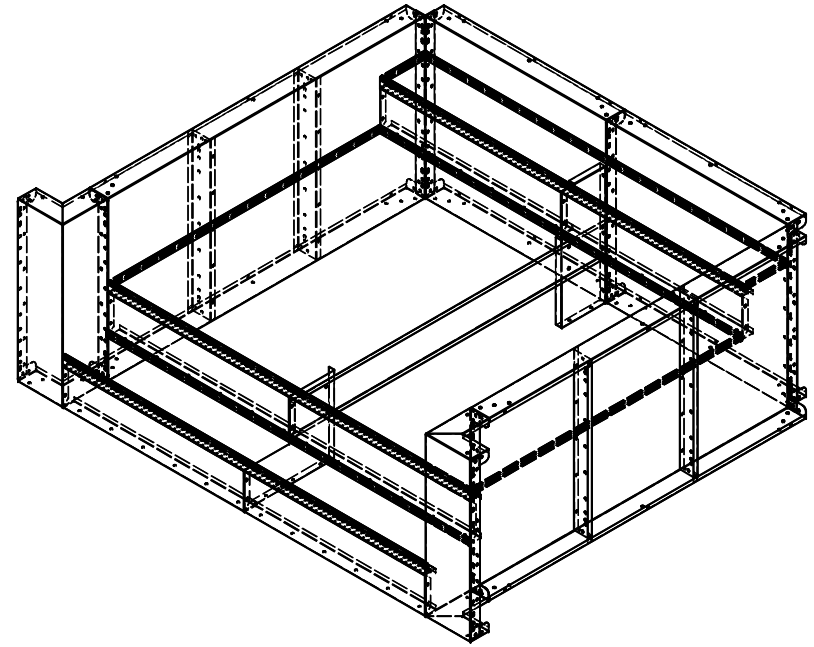
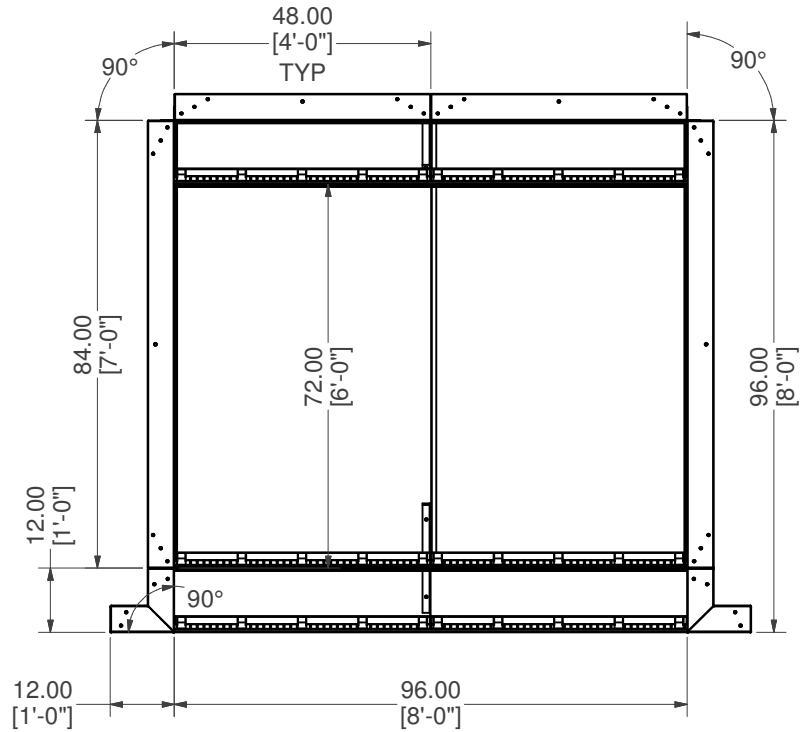
CONTRACTOR NOTE:
BACK FILL STEP/ SUNLEDGE AREA WITH COMPACTED EARTH
MATERIAL. FINISH STEP/ SUNLEDGE AREA WITH 2" OF HARDEN
FLOOR MATERIAL TO MATCH REQUIRED DEPTH (FLUSH WITH
TOP OF BEAD RECEIVER).

KEEP BEAD RECEIVER ATTACHED TO THE RISERS AND WALL
PANELS FOR SHIPPING. A TOTAL OF 456" (38') OF BEAD
RECEIVER IS REQUIRED.

10' X 8' X 90° CRN OPEN TOP STEP W/ 6' MIDDLE TREAD

PART #: ESC-17854 	WEIGHT: 535.44 lbmass	MACHINE TIME: N/A	FILE/DIRECTORY: C:\Vault\FTW\Design\CUSTOM STEPS\ESC-17000-17999\ESC-17854.idw
	TOLERANCES EXCEPT AS NOTED 0/0 0.0 0.00 0.000 0' ±1/8 ±0.25 ±0.0625 ±0.03125 ±1/2"	MATERIAL: DRAWN BY: SKS	DATE : 10/25/2023 SHEET : 1 OF 12

NOTE:
RIGHT AND LEFT SIDE
PARTS ARE SYMMETRICAL.

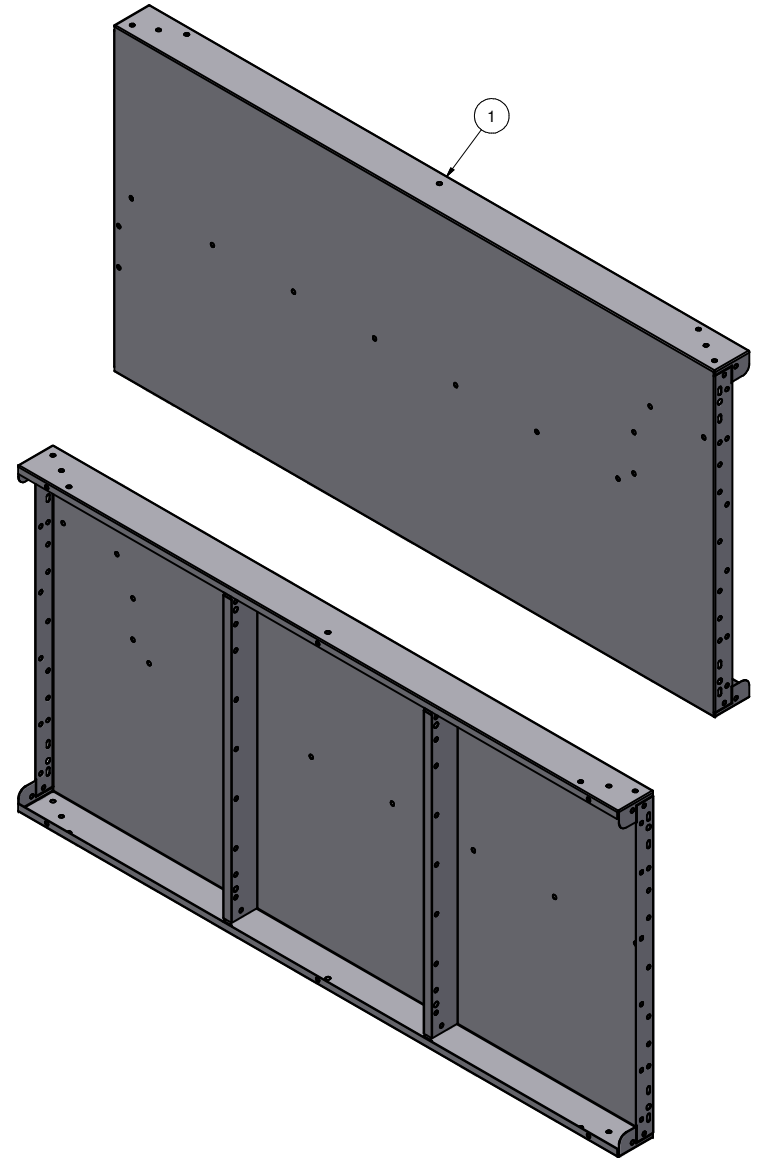
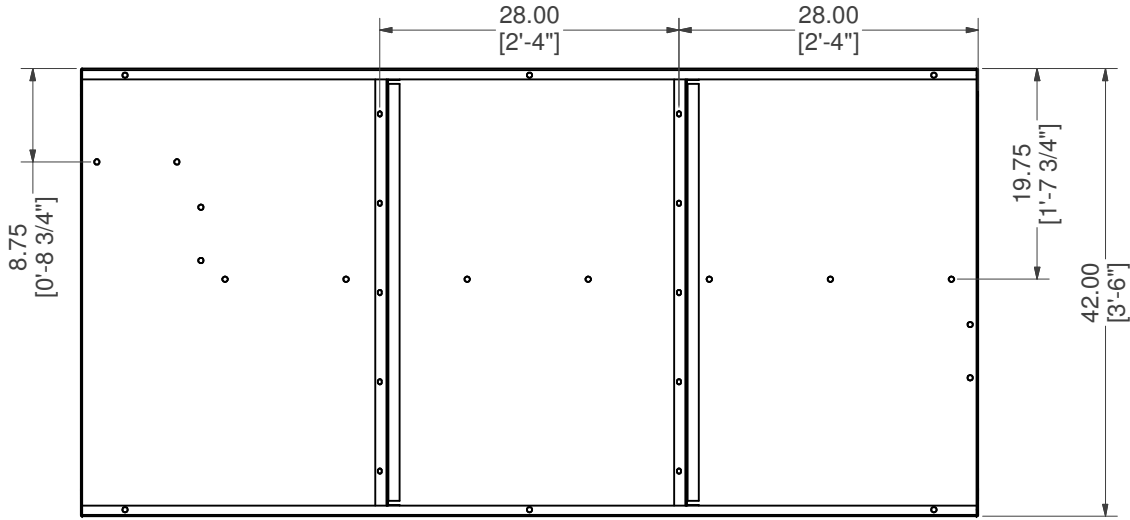
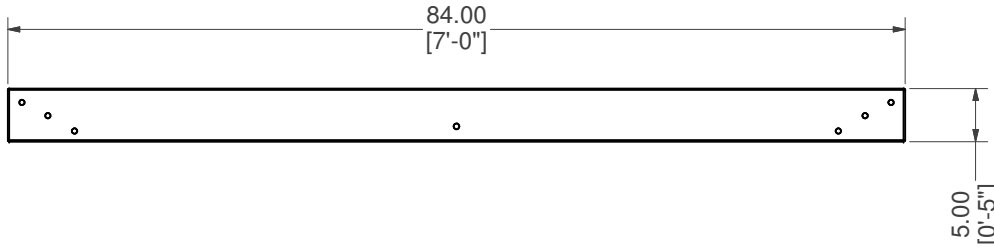


10' X 8' X 90° CRN OPEN TOP STEP W/ 6' MIDDLE TREAD

PART #: ESC-17854 	WEIGHT: 535.44 lbmass	MACHINE TIME: N/A	FILE/DIRECTORY: C:\Vault\FTW\Design\CUSTOM STEPS\ESC-17000-17999\ESC-17854.idw
	TOLERANCES EXCEPT AS NOTED 0/0 0.0 0.00 0.000 0' ±1/8 ±0.25 ±0.0625 ±0.03125 ±1/2"	MATERIAL:	DATE: 10/25/2023
DRAWN BY: SKS	SHEET: 2 OF 12		


Parts List			
ITEM	QTY	PART NUMBER	DESCRIPTION
1	1	ESC-17854-SWL	STRAIGHT, SIDE WALL, LEFT
2	2	M0065-1	PANEL Z-RIB W/BUTTRESS HOLES

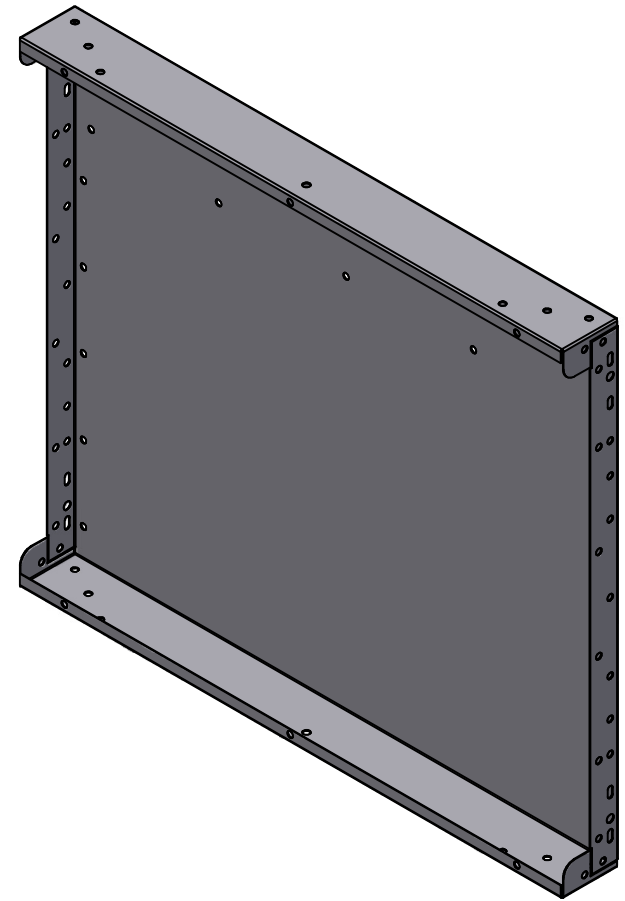
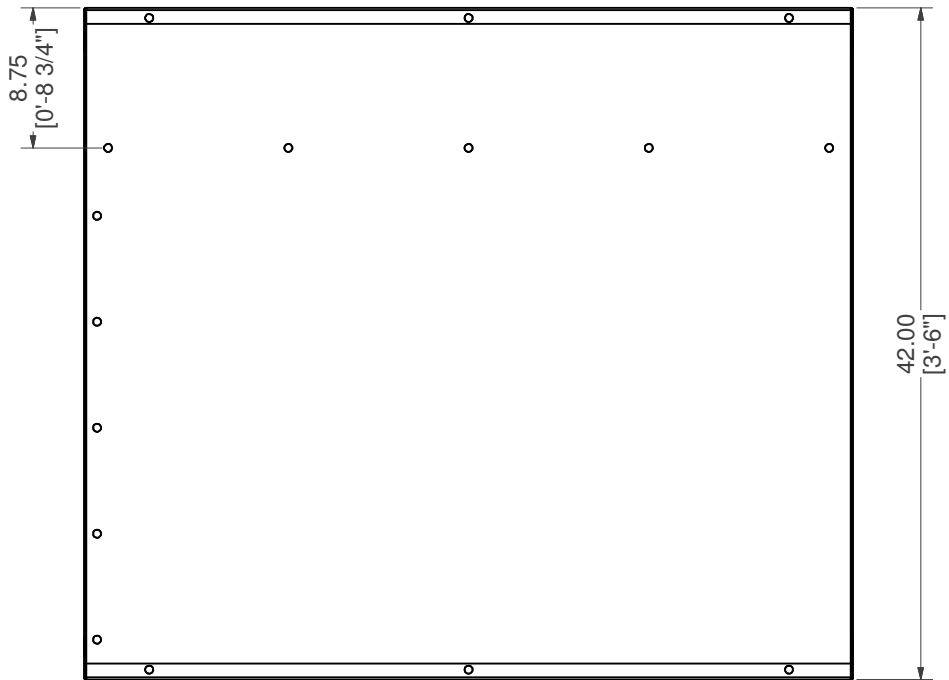
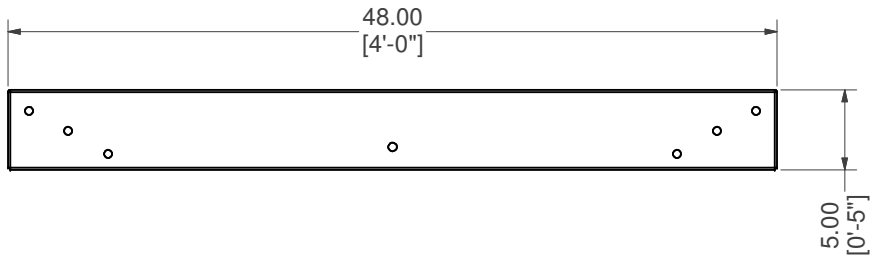
WELDCODE #33




NOTE:
RIGHT SIDE PART IS SYMMETRICAL TO LEFT SIDE PART SHOWN.

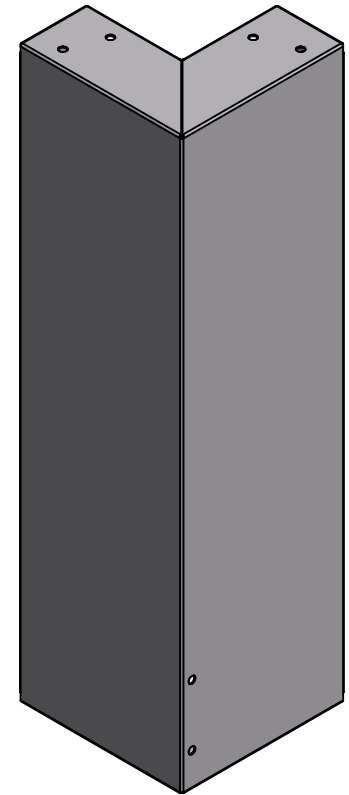
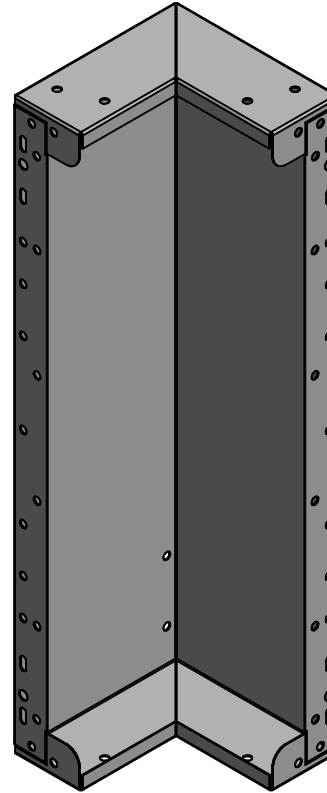
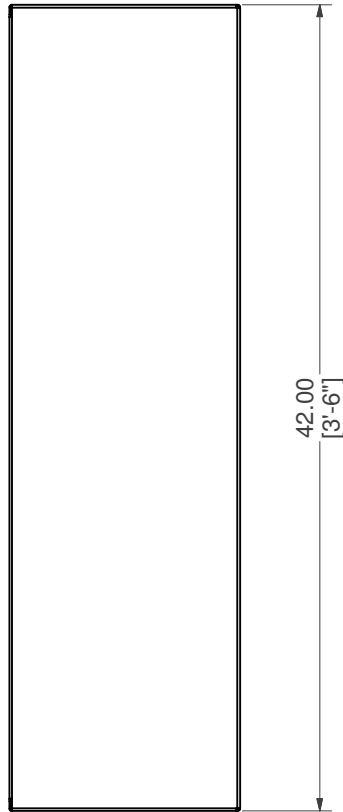
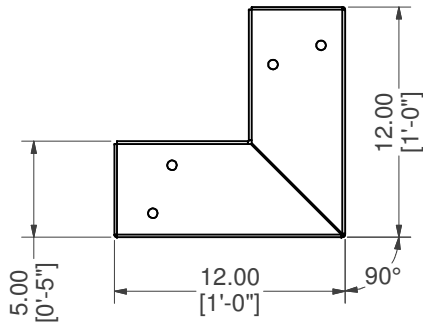
STRAIGHT, SIDE WALL, LEFT W/Z-RIB

PART #: ESC-17854-SWL 	WEIGHT: 106.20 lbm _{ass}	MACHINE TIME: N/A	FILE/DIRECTORY: C:\Vault\FTW\Design\CUSTOM STEPS\ESC-17000-17999\ESC-17854.idw
	TOLERANCES EXCEPT AS NOTED 0/0 0.0 0.00 0.000 0' ±1/8 ±0.25 ±0.0625 ±0.03125 ±1/2'	MATERIAL: DRAWN BY: SKS	DATE : 10/25/2023 SHEET : 3 OF 12




STRAIGHT, BACK WALL

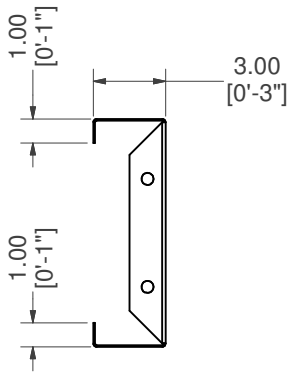
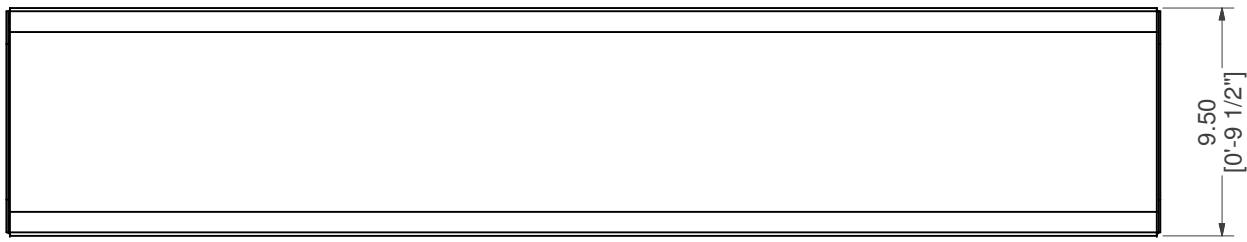
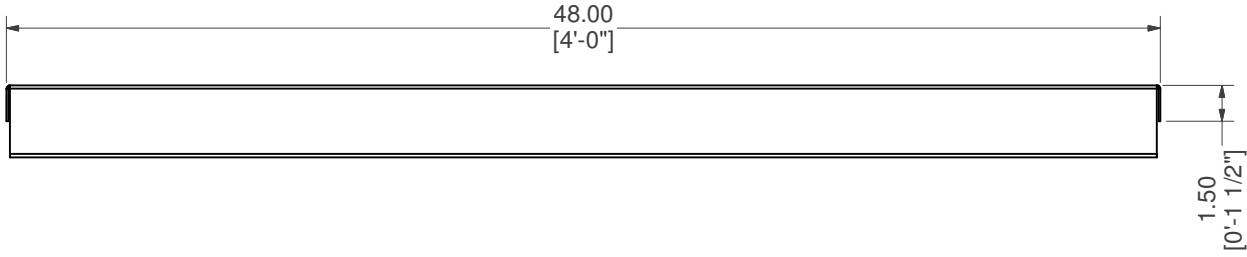
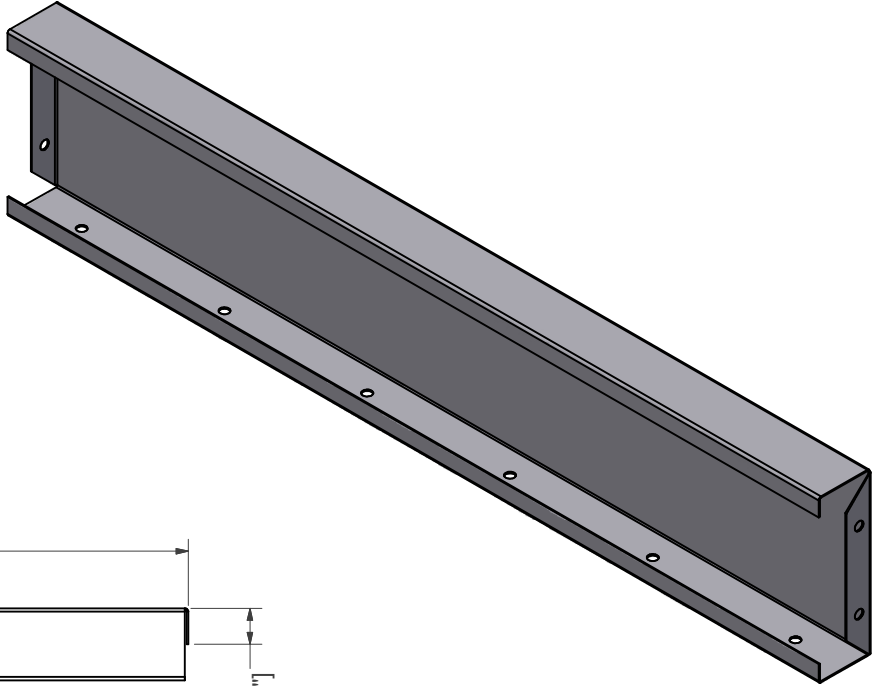
PART #: ESC-17456-BW	WEIGHT: 56.29 lbmass	MACHINE TIME: N/A	FILE/DIRECTORY: C:\Vault\FTW\Design\CUSTOM STEPS\ESC-17000-17999\ESC-17854.idw
	TOLERANCES EXCEPT AS NOTED 0/0 0.0 0.00 0.000 0' ±1/8 ±0.25 ±0.0625 ±0.03125 ±1/2'	MATERIAL: 14 GA. GALVANIZED	DATE : 10/25/2023
		DRAWN BY: SKS	SHEET : 4 OF 12
NOTES:			




NOTE:
RIGHT SIDE PART IS SYMMETRICAL TO LEFT SIDE PART SHOWN.

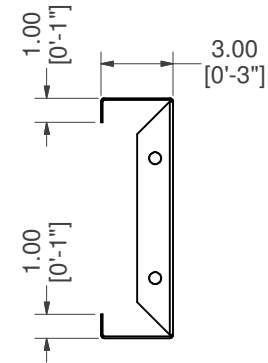
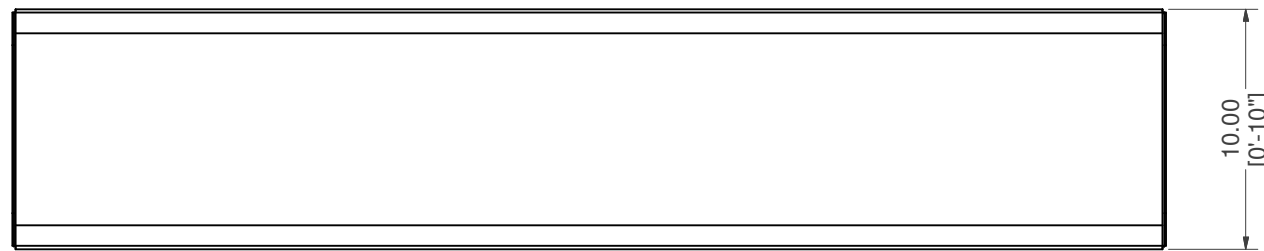
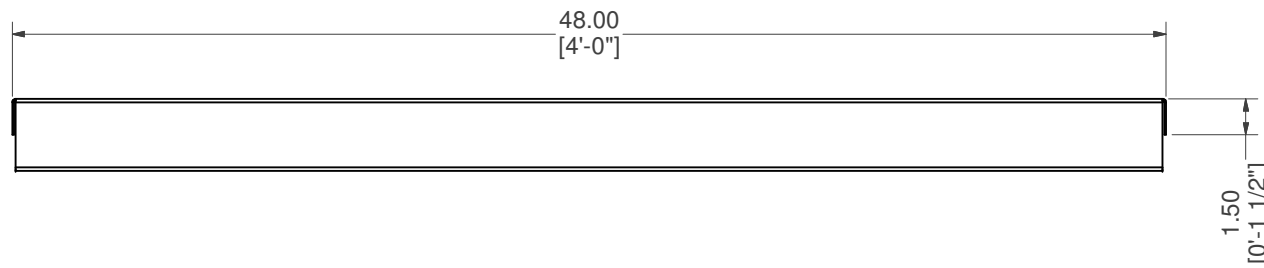
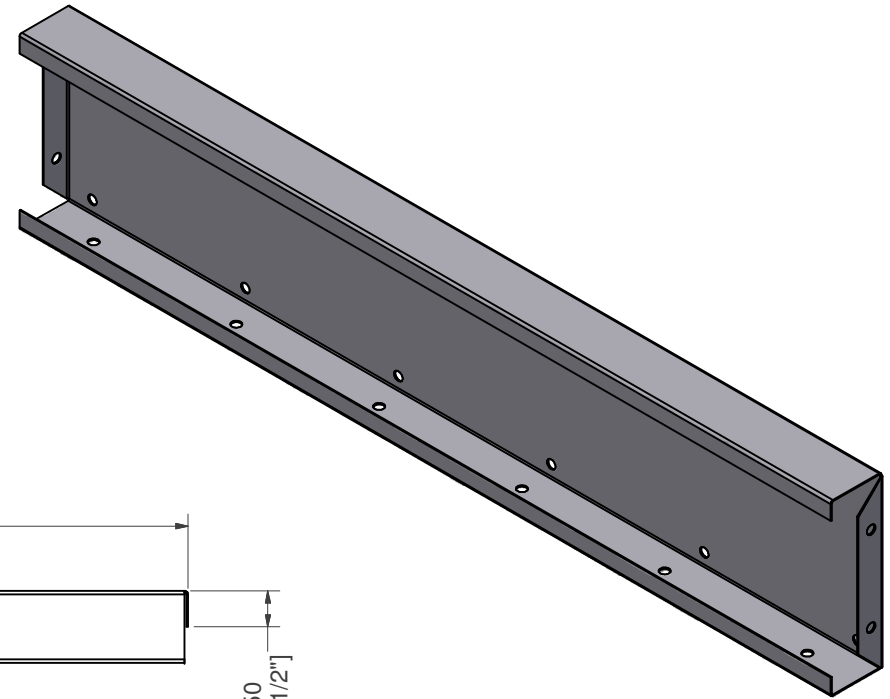
STR REV, WALL, LEFT

PART #: ESC-10698-SRWL 	WEIGHT: 26.66 lbmass	MACHINE TIME: N/A	FILE/DIRECTORY: C:\Vault\FTW\Design\CUSTOM STEPS\ESC-17000-17999\ESC-17854.idw
	TOLERANCES EXCEPT AS NOTED 0/0 0.0 0.00 0.000 0' ±1/8 ±0.25 ±0.0625 ±0.03125 ±1/2'	MATERIAL: 14 GA. GALVANIZED	DATE : 10/25/2023
DRAWN BY: SKS	SHEET : 5 OF 12		




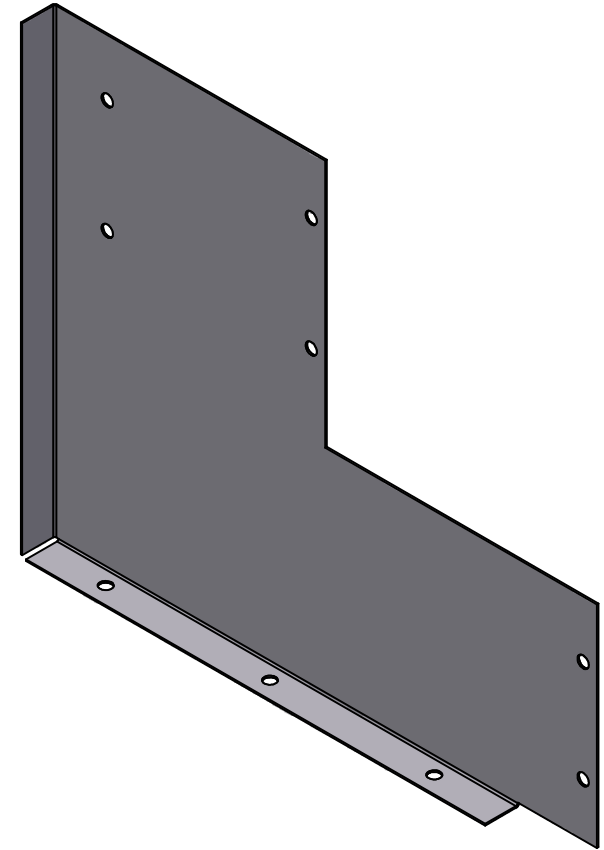
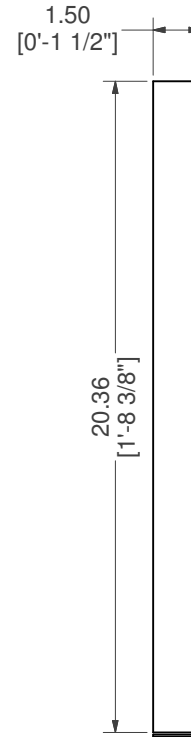
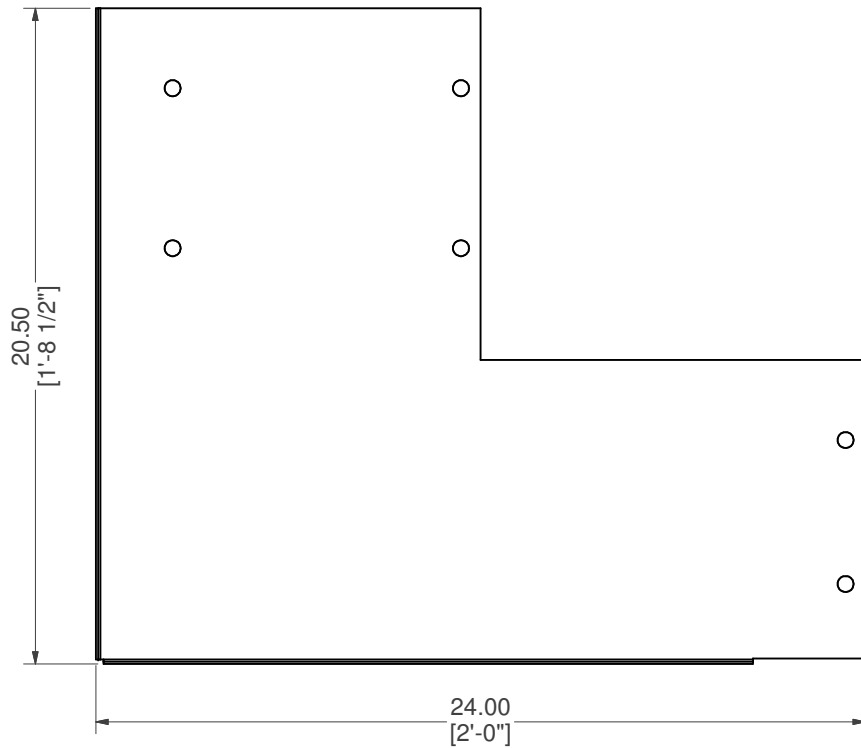
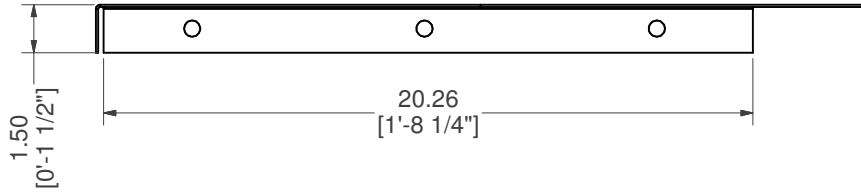
STRAIGHT, BOTTOM RISER

PART #: ESC-17070-BR	WEIGHT: 16.98 lbmass	MACHINE TIME: N/A	FILE/DIRECTORY: C:\Vault\FTW\Design\CUSTOM STEPS\ESC-17000-17999\ESC-17854.idw	
	TOLERANCES EXCEPT AS NOTED 0/0 0.0 0.00 0.000 0' ±1/8 ±0.25 ±0.0625 ±0.03125 ±1/2'	MATERIAL: 14 GA. GALVANIZED	DATE : 10/25/2023	NOTES:
		DRAWN BY: SKS	SHEET : 6 OF 12	




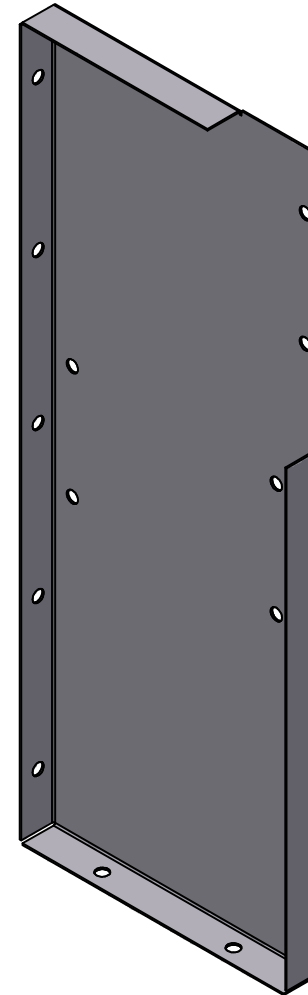
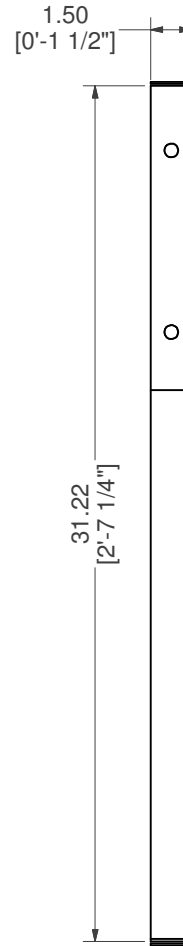
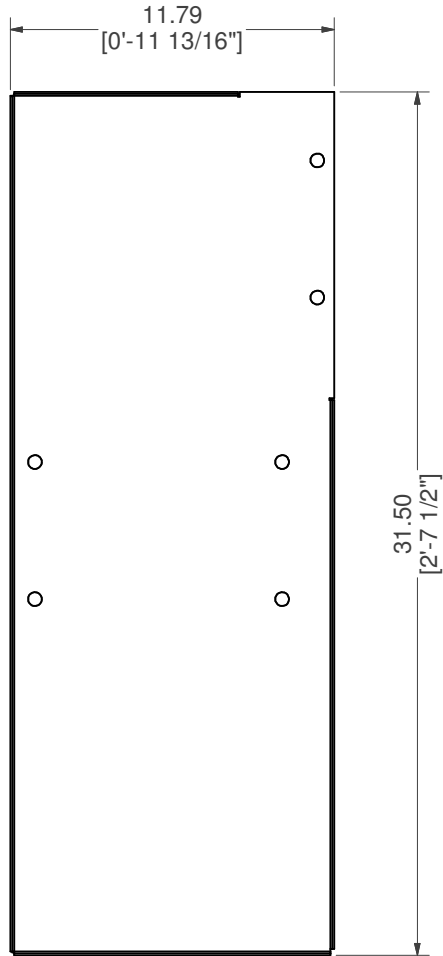
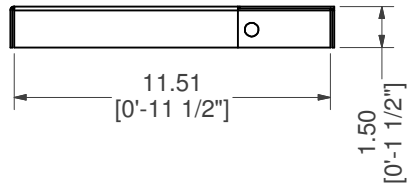
STRAIGHT, MIDDLE RISER

PART #: ESC-17070-MR	WEIGHT: 17.47 lbmass	MACHINE TIME: N/A	FILE/DIRECTORY: C:\Vault\FTW\Design\CUSTOM STEPS\ESC-17000-17999\ESC-17854.idw	
	TOLERANCES EXCEPT AS NOTED 0/0 0.0 0.00 0.000 0' ±1/8 ±0.25 ±0.0625 ±0.03125 ±1/2'	MATERIAL: 14 GA. GALVANIZED	DATE : 10/25/2023	NOTES:
		DRAWN BY: SKS	SHEET : 7 OF 12	



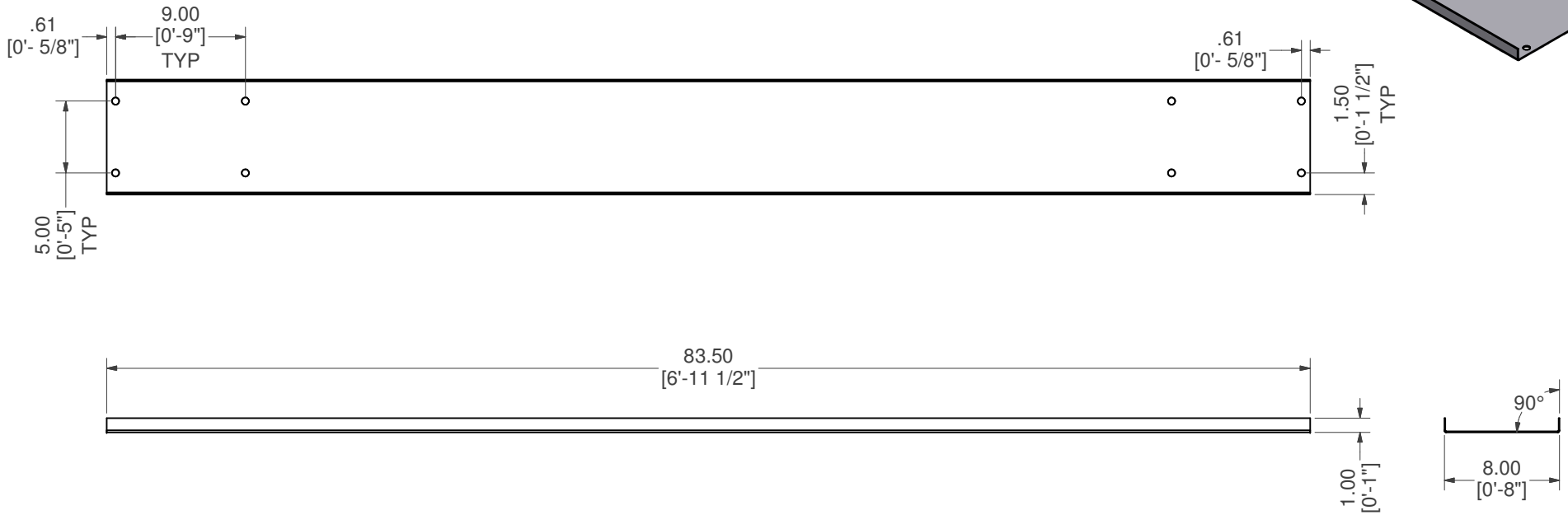
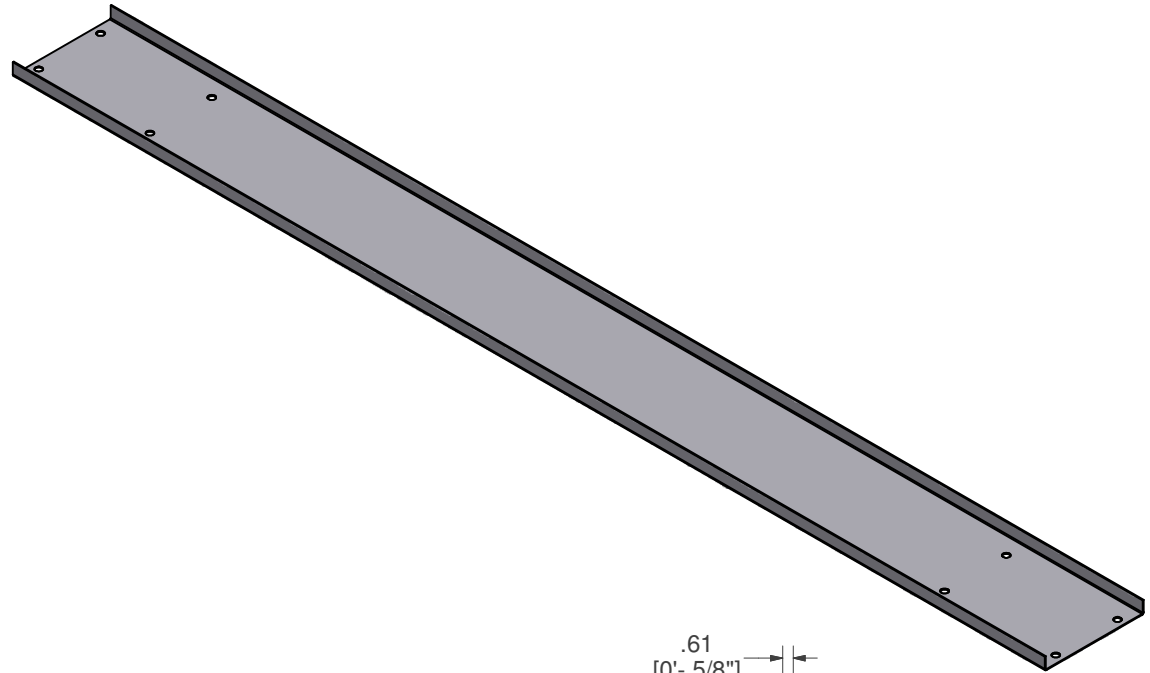
BRACE, 2-RISER SUPPORT

PART #: ESC-17047-B 	WEIGHT: 8.41 lbmass	MACHINE TIME: N/A	FILE/DIRECTORY: C:\Vault\FTW\Design\CUSTOM STEPS\ESC-17000-17999\ESC-17854.idw
	TOLERANCES EXCEPT AS NOTED 0/0 0.0 0.00 0.000 0' ±1/8 ±0.25 ±0.0625 ±0.03125 ±1/2'	MATERIAL: 14 GA. GALVANIZED	DATE : 10/25/2023
DRAWN BY: SKS	SHEET : 8 OF 12		




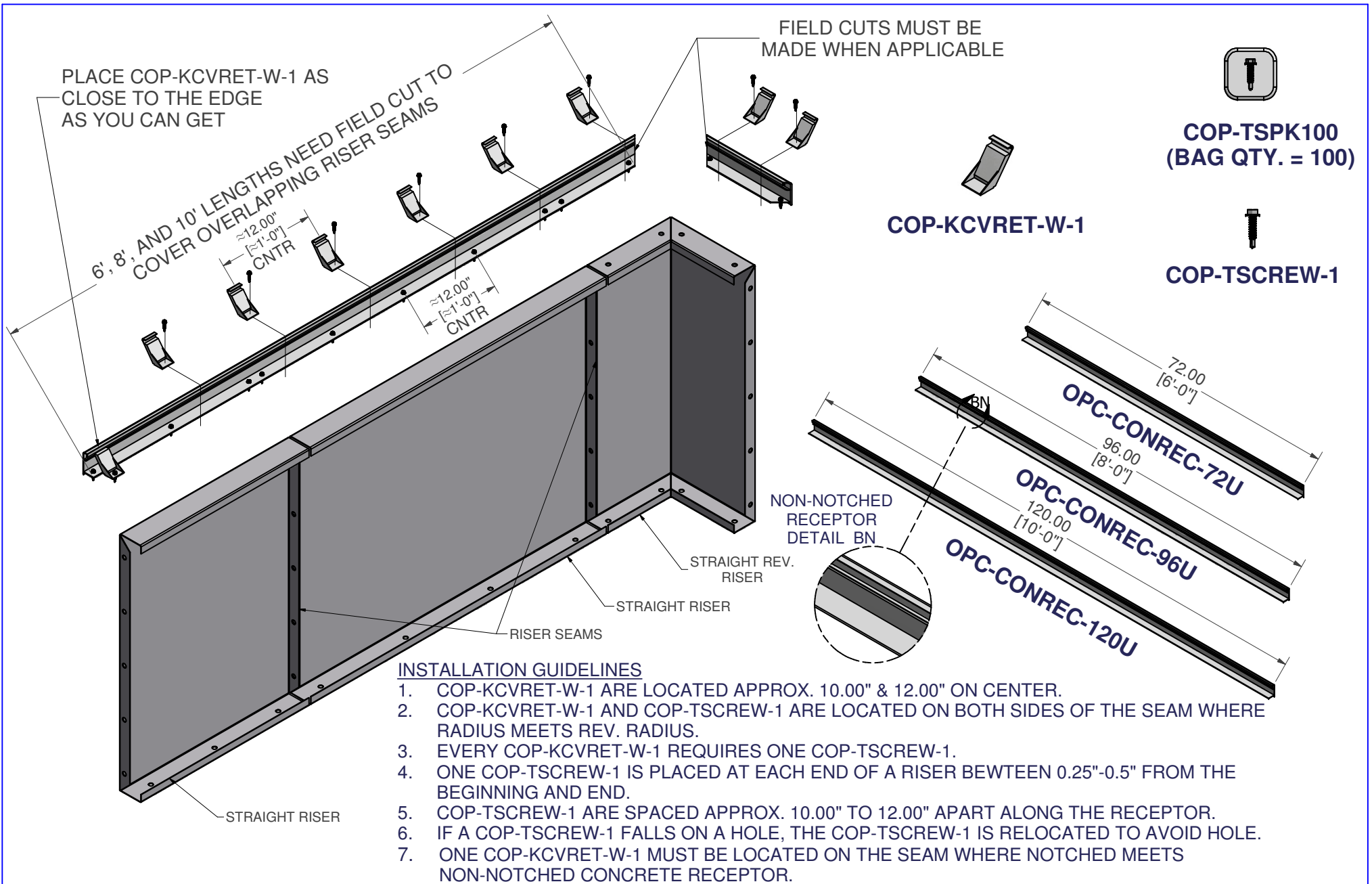
BRACE, TOP RISER

PART #: ESC-17226-TRB 	WEIGHT: 9.49 lbmass	MACHINE TIME: N/A	FILE/DIRECTORY: C:\Vault\FTW\Design\CUSTOM STEPS\ESC-17000-17999\ESC-17854.idw
	TOLERANCES EXCEPT AS NOTED 0/0 0.0 0.00 0.000 0' ±1/8 ±0.25 ±0.0625 ±0.03125 ±1/2'	MATERIAL: 14 GA. GALVANIZED	DATE : 10/25/2023
DRAWN BY: SKS	SHEET : 9 OF 12		



BRACE, CENTER SUPPORT

PART #: ESC-17326-CB	WEIGHT: 16.54 lbmass	MACHINE TIME: N/A	FILE/DIRECTORY: C:\Vault\FTW\Design\CUSTOM STEPS\ESC-17000-17999\ESC-17854.idw
	TOLERANCES EXCEPT AS NOTED 0/0 0.0 0.00 0.000 0' ±1/8 ±0.25 ±0.0625 ±0.03125 ±1/2'	MATERIAL: 14 GA. GALVANIZED	DATE : 10/25/2023
		DRAWN BY: SKS	SHEET : 10 OF 12
NOTES:			



INSTALLATION GUIDELINES

1. COP-KCVRET-W-1 ARE LOCATED APPROX. 10.00" & 12.00" ON CENTER.
2. COP-KCVRET-W-1 AND COP-TSCREW-1 ARE LOCATED ON BOTH SIDES OF THE SEAM WHERE RADIUS MEETS REV. RADIUS.
3. EVERY COP-KCVRET-W-1 REQUIRES ONE COP-TSCREW-1.
4. ONE COP-TSCREW-1 IS PLACED AT EACH END OF A RISER BETWEEN 0.25"-0.5" FROM THE BEGINNING AND END.
5. COP-TSCREW-1 ARE SPACED APPROX. 10.00" TO 12.00" APART ALONG THE RECEPTOR.
6. IF A COP-TSCREW-1 FALLS ON A HOLE, THE COP-TSCREW-1 IS RELOCATED TO AVOID HOLE.
7. ONE COP-KCVRET-W-1 MUST BE LOCATED ON THE SEAM WHERE NOTCHED MEETS NON-NOTCHED CONCRETE RECEPTOR.

NON-NOTCHED CONCRETE RECEPTOR FIELD INSTALLATION

PART #: STRAIGHT CONCRETE RECEPTOR 	WEIGHT: 77.51 lbmass	MACHINE TIME: N/A	FILE/DIRECTORY: C:\Vault\FTW\Design\CUSTOM STEPS\ESC-17000-17999\ESC-17854.idw
	TOLERANCES EXCEPT AS NOTED 0/0 0.0 0.00 0.000 0' ±1/8 ±0.25 ±0.0625 ±0.03125 ±1/2"	MATERIAL:	DATE: 10/25/2023
DRAWN BY: SKS	SHEET: 11 OF 12		

PLACE COP-KCVRET-W-1 AT SEAMS WHERE STRAIGHT MEETS A RADIUS/REV. RADIUS.

PLACE COP-TSCREW-1 ON BOTH SIDES OF THE SEAMS.

PLACE COP-KCVRET-W-1 AS CLOSE TO THE END EDGE AS YOU CAN GET.

FIELD CUTS MUST BE MADE WHEN APPLICABLE

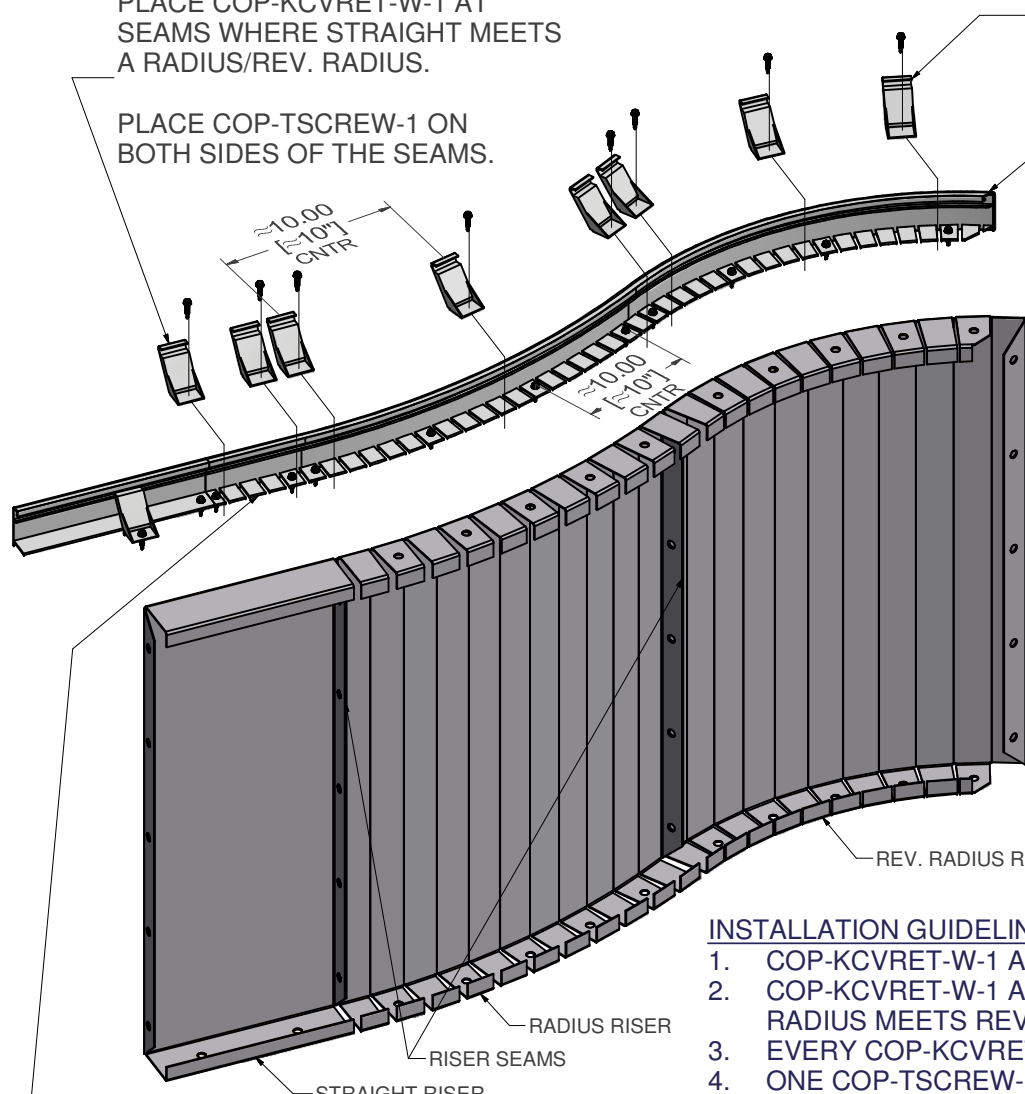


COP-TSPK100
(BAG QTY. = 100)

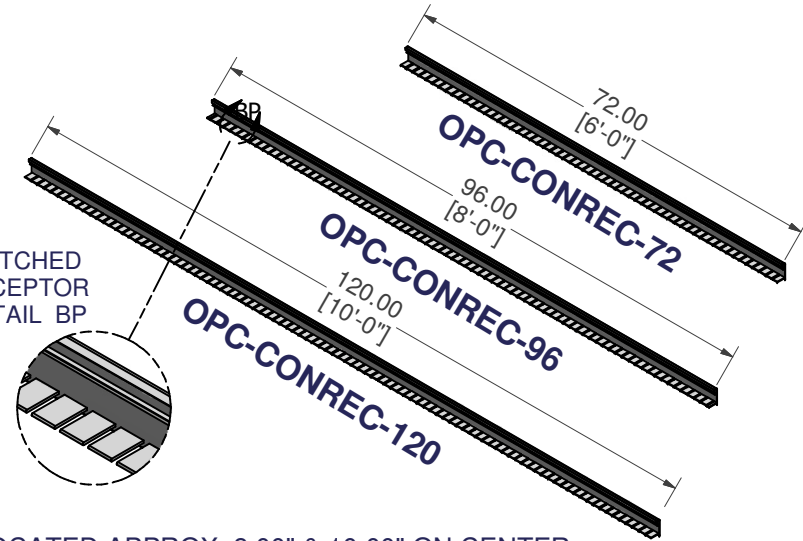


COP-TSCREW-1

COP-KCVRET-W-1



NOTCHED RECEPTOR DETAIL BP



ALLOW AN APPROX. OF 6.00" OF OVERLAP GOING FROM RADIUS/ REV. RADIUS TO A STRAIGHT RISER.

INSTALLATION GUIDELINES

1. COP-KCVRET-W-1 ARE LOCATED APPROX. 8.00" & 10.00" ON CENTER.
2. COP-KCVRET-W-1 AND COP-TSCREW-1 ARE LOCATED ON BOTH SIDES OF THE SEAM WHERE RADIUS MEETS REV. RADIUS.
3. EVERY COP-KCVRET-W-1 REQUIRES ONE COP-TSCREW-1.
4. ONE COP-TSCREW-1 IS PLACED AT EACH END OF A RISER BETWEEN 0.25"-0.5" FROM THE BEGINNING AND END.
5. COP-TSCREW-1 ARE SPACED APPROX. 8.00" TO 10.00" APART ALONG THE RECEPTOR.
6. IF A COP-TSCREW-1 FALLS ON A HOLE, THE COP-TSCREW-1 IS RELOCATED TO AVOID HOLE.
7. ONE COP-KCVRET-W-1 MUST BE LOCATED ON THE SEAM WHERE NOTCHED MEETS NON-NOTCHED CONCRETE RECEPTOR.

NOTCHED CONCRETE RECEPTOR FIELD INSTALLATION

PART #: REV-RADIUS CONCRETE RECEPTOR

WEIGHT:
52.49 lbmass

MACHINE TIME:
N/A

FILE/DIRECTORY:

C:\Vault\FTW\Design\CUSTOM STEPS\ESC-17000-17999\ESC-17854.idw



TOLERANCES EXCEPT AS NOTED
0/0 0.0 0.00 0.000 0'
±1/8 ±0.25 ±0.0625 ±0.03125 ±1/2"

MATERIAL:

DATE : 10/25/2023

NOTES:

DRAWN BY: SKS

SHEET : 12 OF 12