

Parts List

ITEM	QTY	PART NUMBER	DESCRIPTION
1	6	48-Z-RIB	48" Z-RIB
2	64	COP-KCVRET-W-1	COP COPING STIFFENER 1 5/8"-1PC
3	1	ESC-17044-CWL	RADIUS, CORNER WALL, LEFT
4	1	ESC-17044-CWR	RADIUS, CORNER WALL, RIGHT
5	1	ESC-17837-B	BRACE, 3-RISER SUPPORT
6	2	ESC-17837-CSB	BRACE, 3-RISER MIDDLE SUPPORT
7	2	ESC-18089-BR	STRAIGHT, BOTTOM RISER
8	2	ESC-18089-BW	STRAIGHT, BACK WALL
9	6	ESC-18089-CB	BRACE, CENTER SUPPORT
10	4	ESC-18089-MR	STRAIGHT, MIDDLE RISER
11	6	ESC-18089-PT	BRACE, FLAT PLATE
12	2	ESC-18089-SW	STRAIGHT, SIDE WALL
13	1	ESC-18089-SWL	STRAIGHT, SIDE WALL, LEFT
14	1	ESC-18089-SWR	STRAIGHT, SIDE WALL, RIGHT
15	1	ESC-18089-TRL	STRAIGHT, TOP RISER, LEFT
16	2	ESC-18089-TRMS	BRACE, TOP RISER MIDDLE SUPPORT
17	1	ESC-18089-TRR	STRAIGHT, TOP RISER, RIGHT
18	1	ESC-18089-TRS	BRACE, TOP RISER SUPPORT
19	0'	OPC-CONREC-XX	NOTCHED CONCRETE RECEPTOR
20	56'	OPC-CONREC-XXU	UN-NOTCHED CONCRETE RECEPTOR
21	74'	SSC-1099-PFT	STEEL STEP PVC BEAD RETAINER (PER FT)

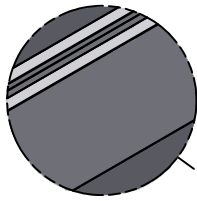
NOTE:
RIGHT AND LEFT SIDE PARTS ARE SYMMETRICAL.

CONTRACTOR NOTE:
BACK FILL STEP/SUNLEDGE AREA WITH COMPACTED EARTH MATERIAL. FINISH STEP/SUNLEDGE AREA WITH 2" OF HARDEN FLOOR MATERIAL TO MATCH REQUIRED DEPTH (FLUSH WITH TOP OF BEAD RECEIVER).

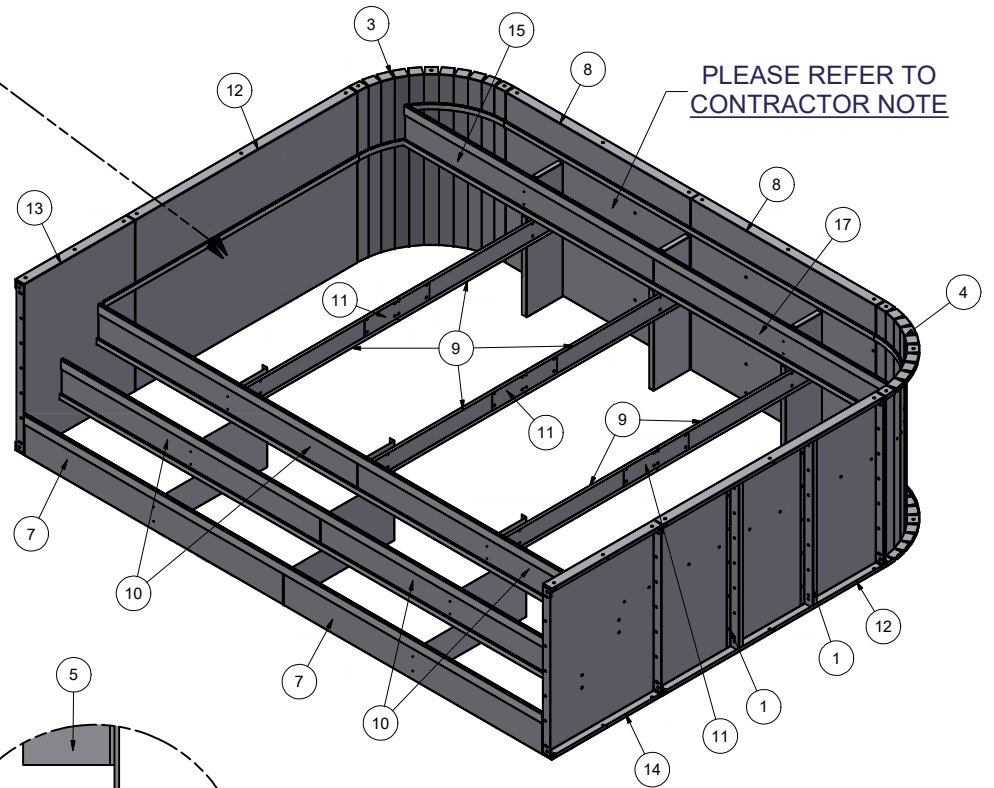
KEEP BEAD RECEIVER ATTACHED TO THE RISERS AND WALL PANELS FOR SHIPPING. A TOTAL OF 888" (74') OF BEAD RECEIVER IS REQUIRED.

CONTRACTOR MUST FIELD FIT ALL CONCRETE RECEPTOR.
TOTALS REQUIRED FOR THIS CUSTOM PRODUCT APPLICATION.
OPC-CONREC-XX (NOTCHED) = 0" (0')
OPC-CONREC-XXU (UN-NOTCHED) = 672" (56')
COP-KCVRET-W-1 (STIFFENER) = 64

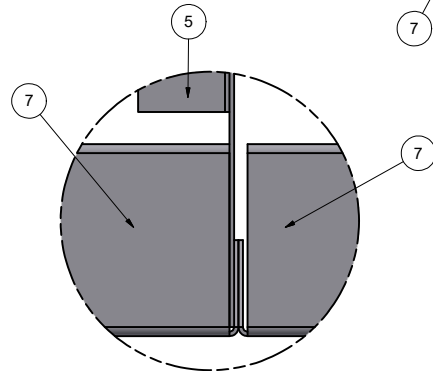
CONTRACTOR NOTE:
CONTRACTOR IS RESPONSIBLE FOR SECURING ALL RISERS INTO PLACE WITH REBAR HOLES BEFORE BACKFILLING THIS CUSTOM STEP



BEAD RECEIVER DETAIL



PLEASE REFER TO CONTRACTOR NOTE



TOP VIEW
BRACE CONNECTED TO INSIDE FLANGE OF LEFT RISER

14' X 11' X 2'R CRN OPEN TOP STEP W/ 8' MIDDLE TREAD

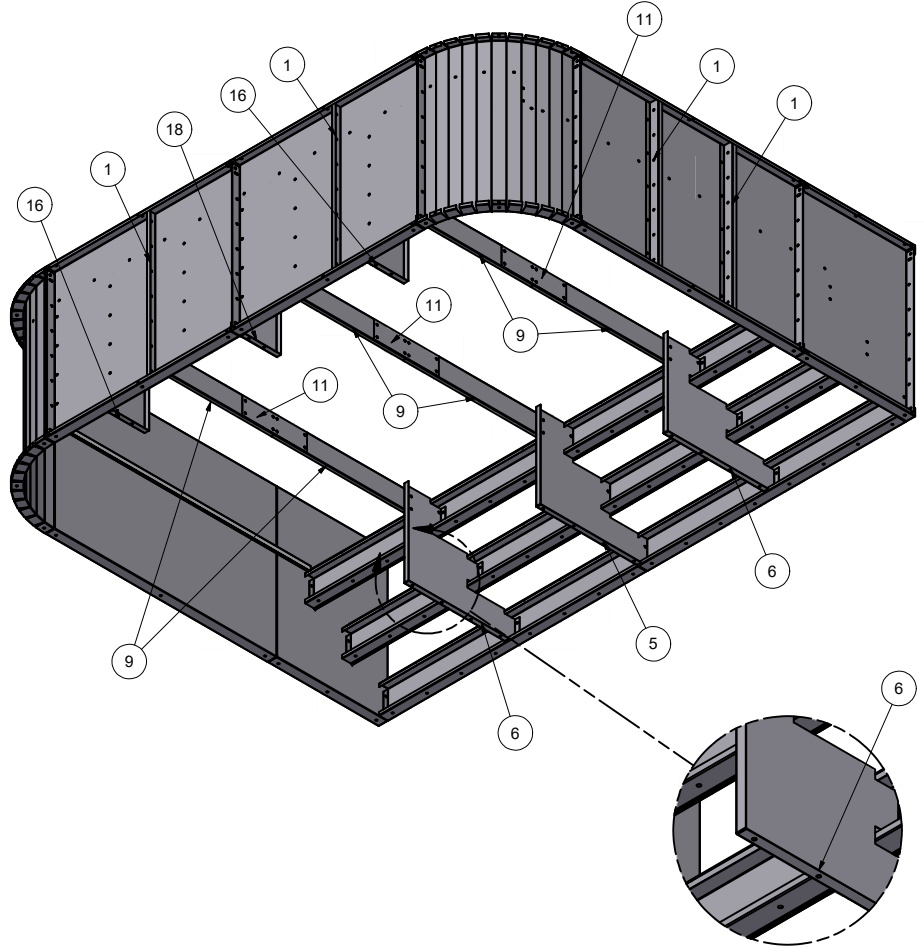
PART #: ESC-18089	WEIGHT: 916.97 lbmass	MACHINE TIME: N/A	FILE/DIRECTORY: C:\Vault\FTW\Design\CUSTOM STEPS\ESC-18000-18999\ESC-18089.idw
	TOLERANCES EXCEPT AS NOTED 0/0 0.0 0.00 0.000 0' ±1/8 ±0.25 ±0.0625 ±0.03125 ±1/2"	MATERIAL:	DATE: 1/9/2024
DRAWN BY: SA	SHEET: 1 OF 17		



Parts List

ITEM	QTY	PART NUMBER	DESCRIPTION
1	6	48-Z-RIB	48" Z-RIB
2	64	COP-KCVRET-W-1	COP COPING STIFFNER 1 5/8"-1PC
3	1	ESC-17044-CWL	RADIUS, CORNER WALL, LEFT
4	1	ESC-17044-CWR	RADIUS, CORNER WALL, RIGHT
5	1	ESC-17837-B	BRACE, 3-RISER SUPPORT
6	2	ESC-17837-CSB	BRACE, 3-RISER MIDDLE SUPPORT
7	2	ESC-18089-BR	STRAIGHT, BOTTOM RISER
8	2	ESC-18089-BW	STRAIGHT, BACK WALL
9	6	ESC-18089-CB	BRACE, CENTER SUPPORT
10	4	ESC-18089-MR	STRAIGHT, MIDDLE RISER
11	6	ESC-18089-PT	BRACE, FLAT PLATE
12	2	ESC-18089-SW	STRAIGHT, SIDE WALL
13	1	ESC-18089-SWL	STRAIGHT, SIDE WALL, LEFT
14	1	ESC-18089-SWR	STRAIGHT, SIDE WALL, RIGHT
15	1	ESC-18089-TRL	STRAIGHT, TOP RISER, LEFT
16	2	ESC-18089-TRMS	BRACE, TOP RISER MIDDLE SUPPORT
17	1	ESC-18089-TRR	STRAIGHT, TOP RISER, RIGHT
18	1	ESC-18089-TRS	BRACE, TOP RISER SUPPORT
19	0'	OPC-CONREC-XX	NOTCHED CONCRETE RECEPTOR
20	56'	OPC-CONREC-XXU	UN-NOTCHED CONCRETE RECEPTOR
21	74'	SSC-1099-PFT	STEEL STEP PVC BEAD RETAINER (PER FT)

NOTE:
RIGHT AND LEFT SIDE
PARTS ARE SYMMETRICAL.



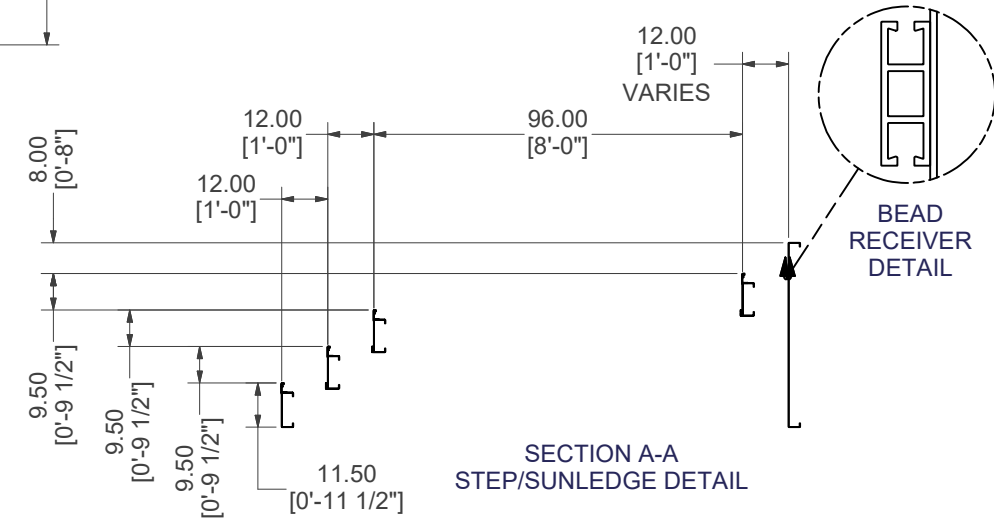
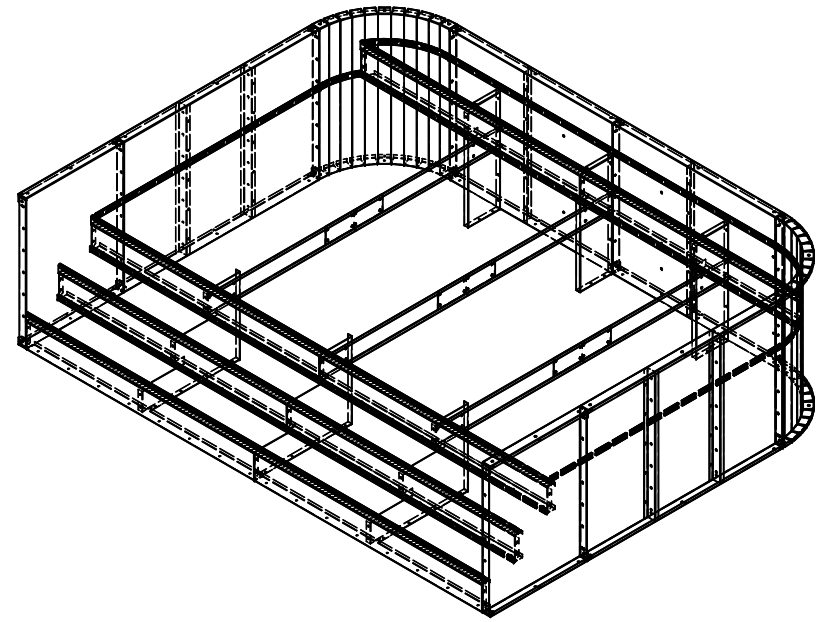
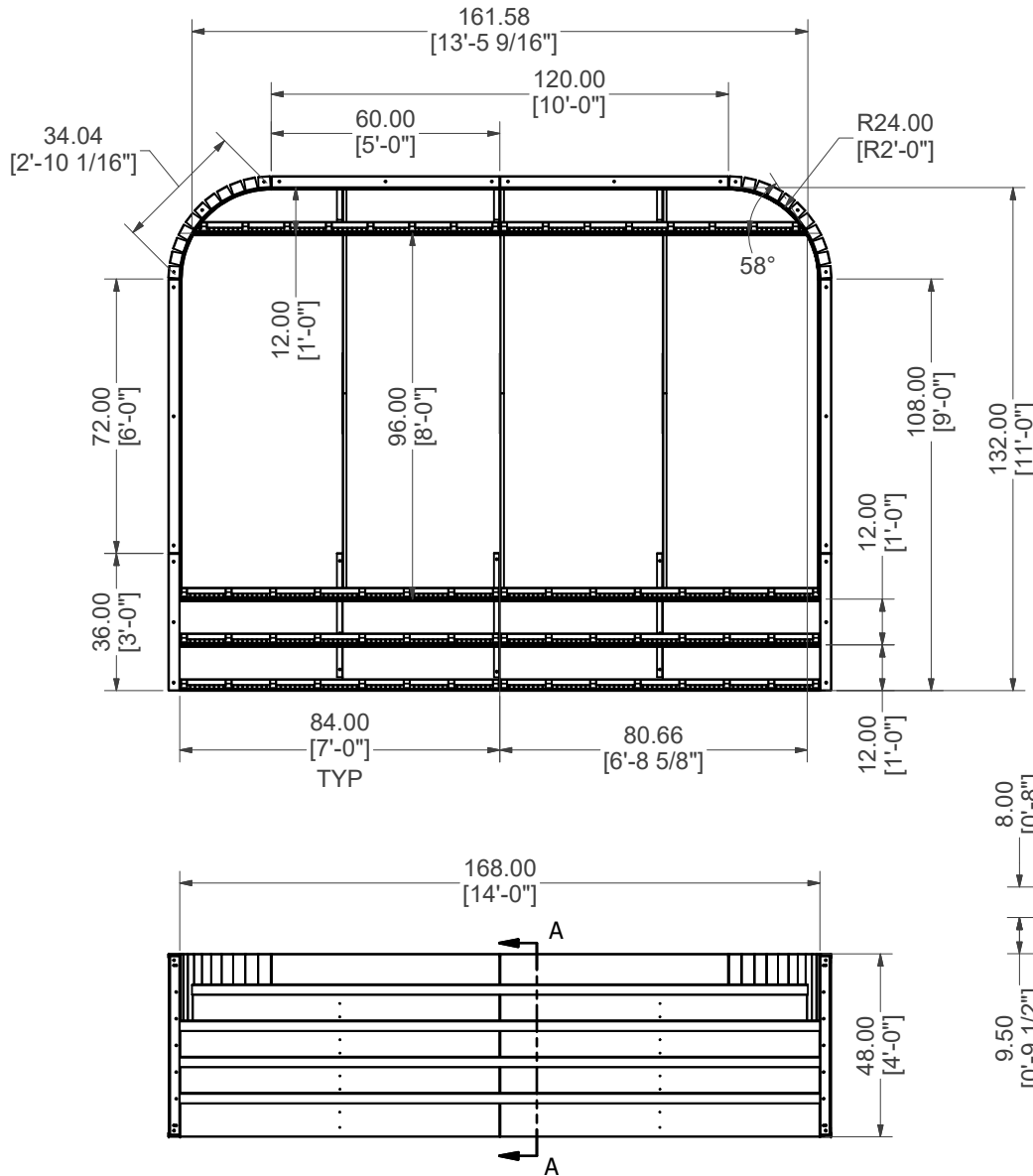
BRACE DETAIL

14' X 11' X 2'R CRN OPEN TOP STEP W/ 8' MIDDLE TREAD

PART #: ESC-18089	WEIGHT: 916.97 lbmass	MACHINE TIME: N/A	FILE/DIRECTORY: C:\Vault\FTW\Design\CUSTOM STEPS\ESC-18000-18999\ESC-18089.idw
	TOLERANCES EXCEPT AS NOTED 0/0 0.0 0.00 0.000 0' ±1/8 ±0.25 ±0.0625 ±0.03125 ±1/2'	MATERIAL:	DATE: 1/9/2024
DRAWN BY: SA	SHEET: 2 OF 17		



NOTE:
RIGHT AND LEFT SIDE
PARTS ARE SYMMETRICAL.



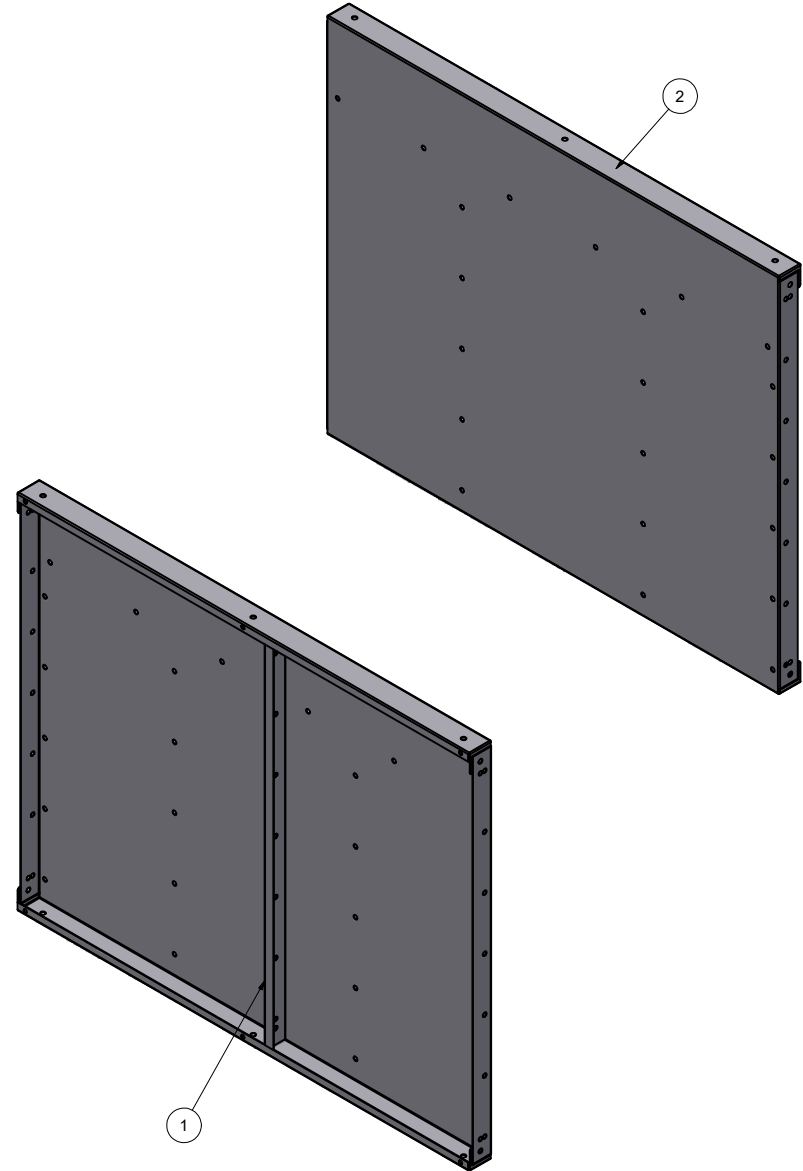
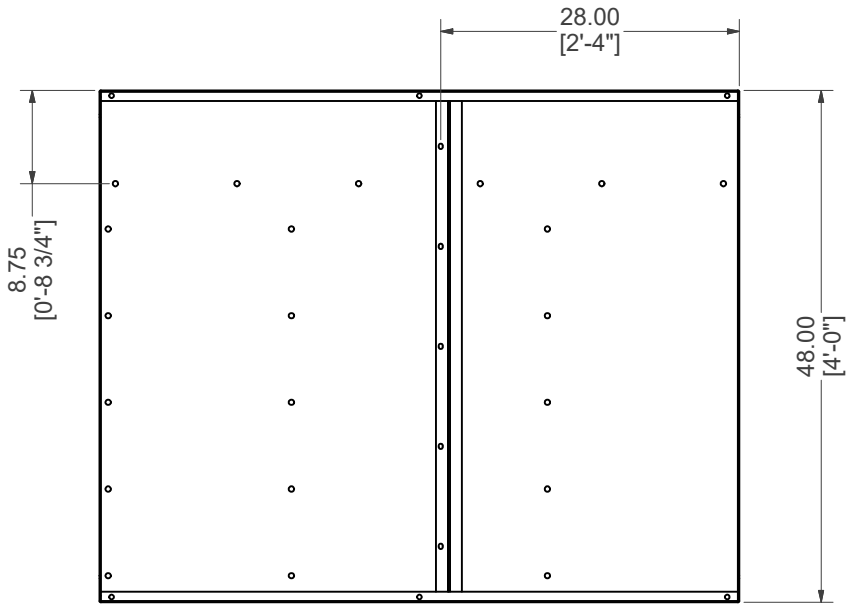
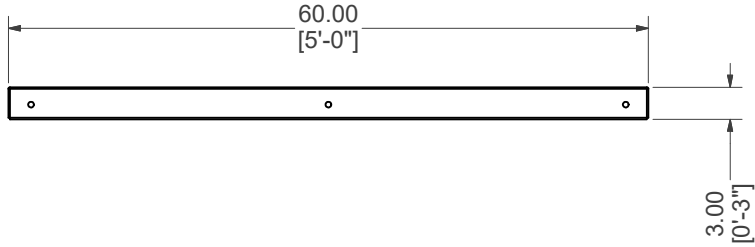
14' X 11' X 2'R CRN OPEN TOP STEP W/ 8' MIDDLE TREAD

PART #: ESC-18089	WEIGHT: 916.97 lbmass	MACHINE TIME: N/A	FILE/DIRECTORY: C:\Vault\FTW\Design\CUSTOM STEPS\ESC-18000-18999\ESC-18089.idw
	TOLERANCES EXCEPT AS NOTED 0/0 0.0 0.00 0.000 0' ±1/8 ±0.25 ±0.0625 ±0.03125 ±1/2"	MATERIAL:	DATE: 1/9/2024
DRAWN BY: SA	SHEET: 3 OF 17		




Parts List			
ITEM	QTY	PART NUMBER	DESCRIPTION
1	1	48-Z-RIB	48" Z-RIB
2	1	ESC-18089-BW	STRAIGHT, BACK WALL

WELDCODE #21

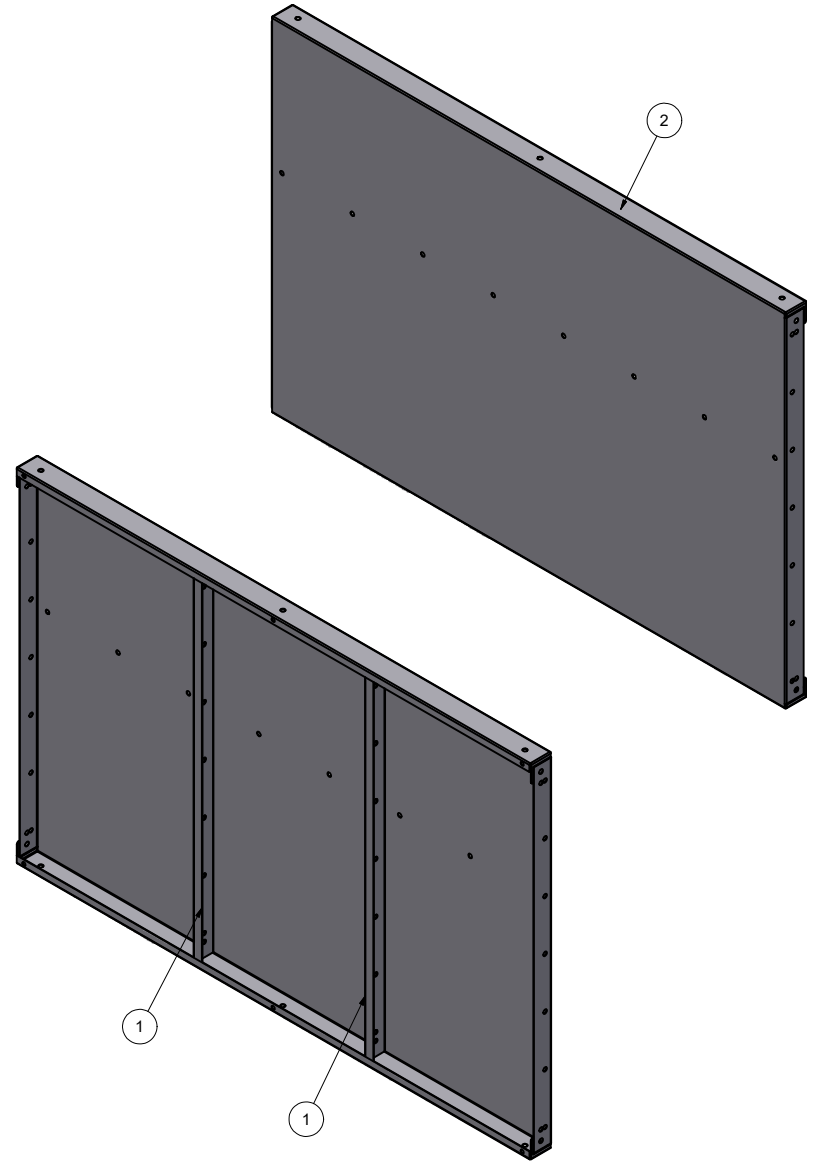
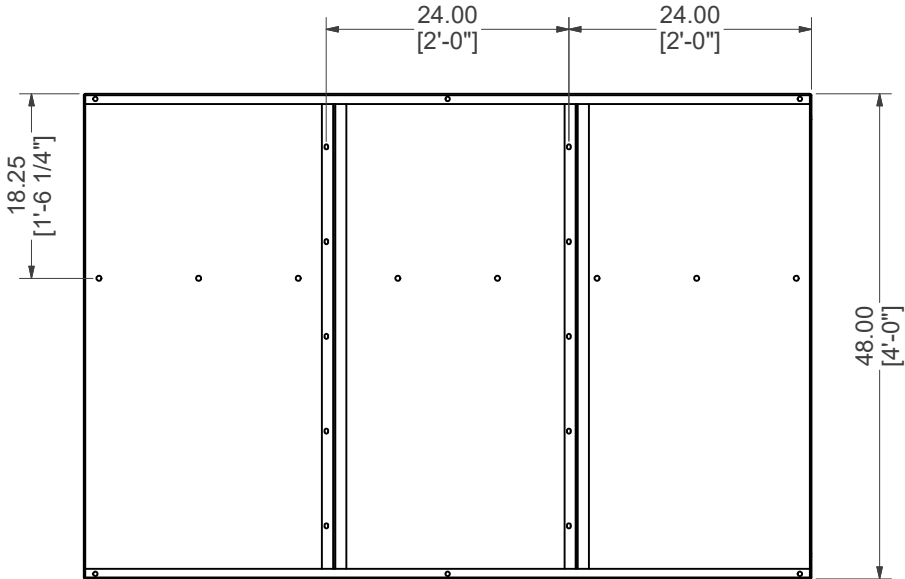
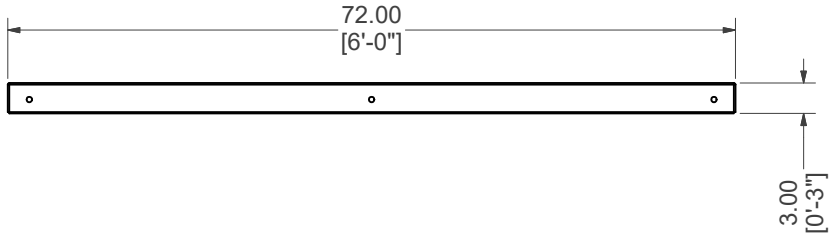


STRAIGHT, BACK WALL, W/Z-RIB


PART #: ESC-18089-BW 	WEIGHT: 77.04 lbmass	MACHINE TIME: N/A	FILE/DIRECTORY: C:\Vault\FTW\Design\CUSTOM STEPS\ESC-18000-18999\ESC-18089.idw
	TOLERANCES EXCEPT AS NOTED 0/0 0.0 0.00 0.000 0' ±1/8 ±0.25 ±0.0625 ±0.03125 ±1/2'	MATERIAL: DRAWN BY: SA	DATE: 1/9/2024 SHEET: 4 OF 17

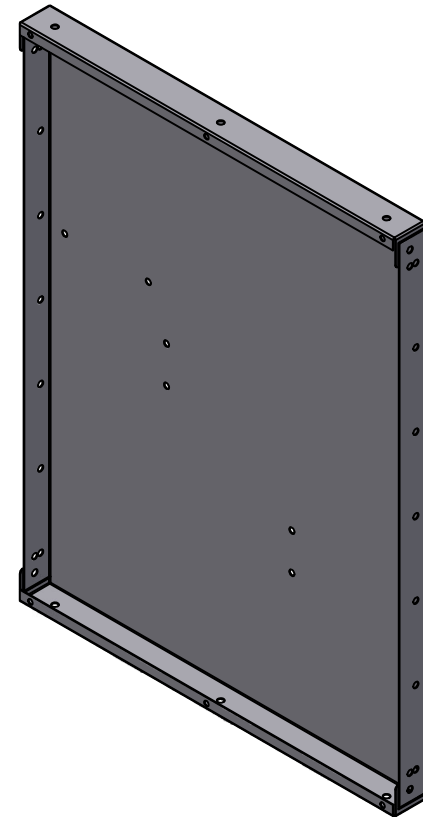
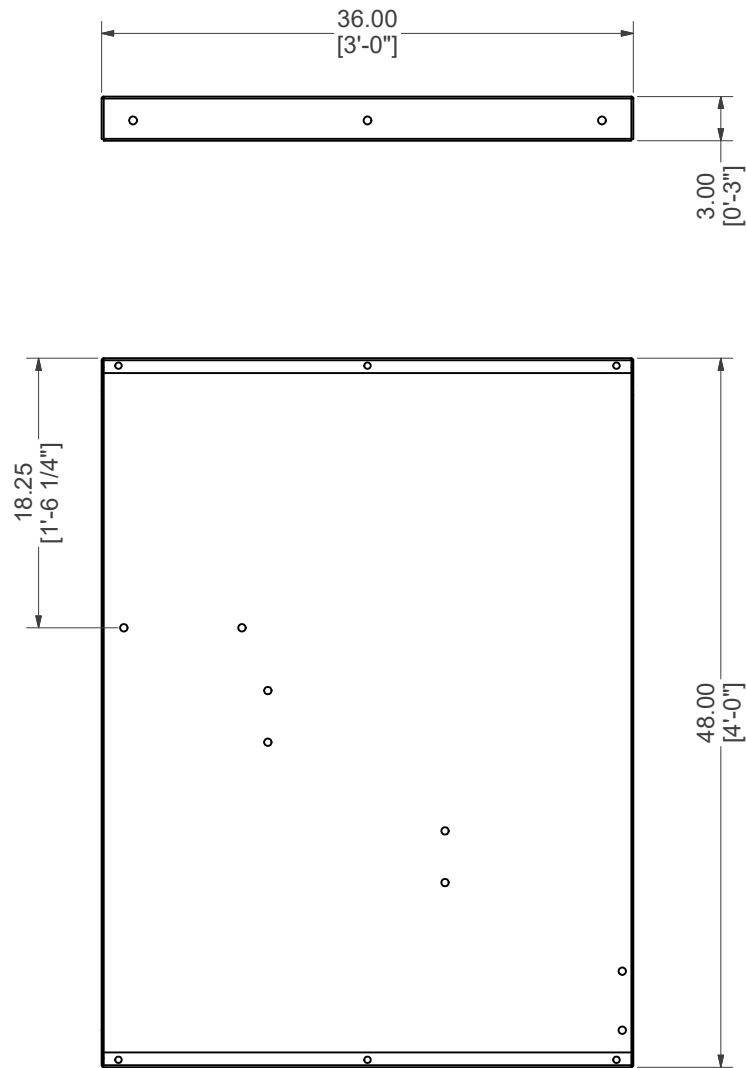
Parts List			
ITEM	QTY	PART NUMBER	DESCRIPTION
1	2	48-Z-RIB	48" Z-RIB
2	1	ESC-18089-SW	STRAIGHT, SIDE WALL

WELDCODE #25




STRAIGHT, SIDE WALL W/Z-RIB

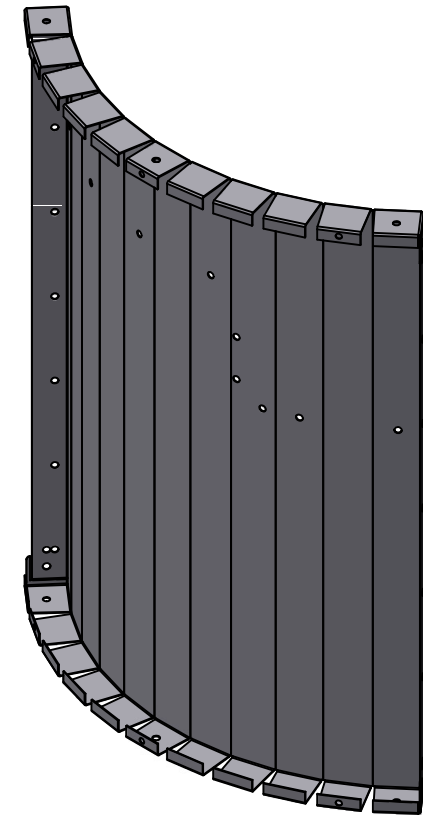
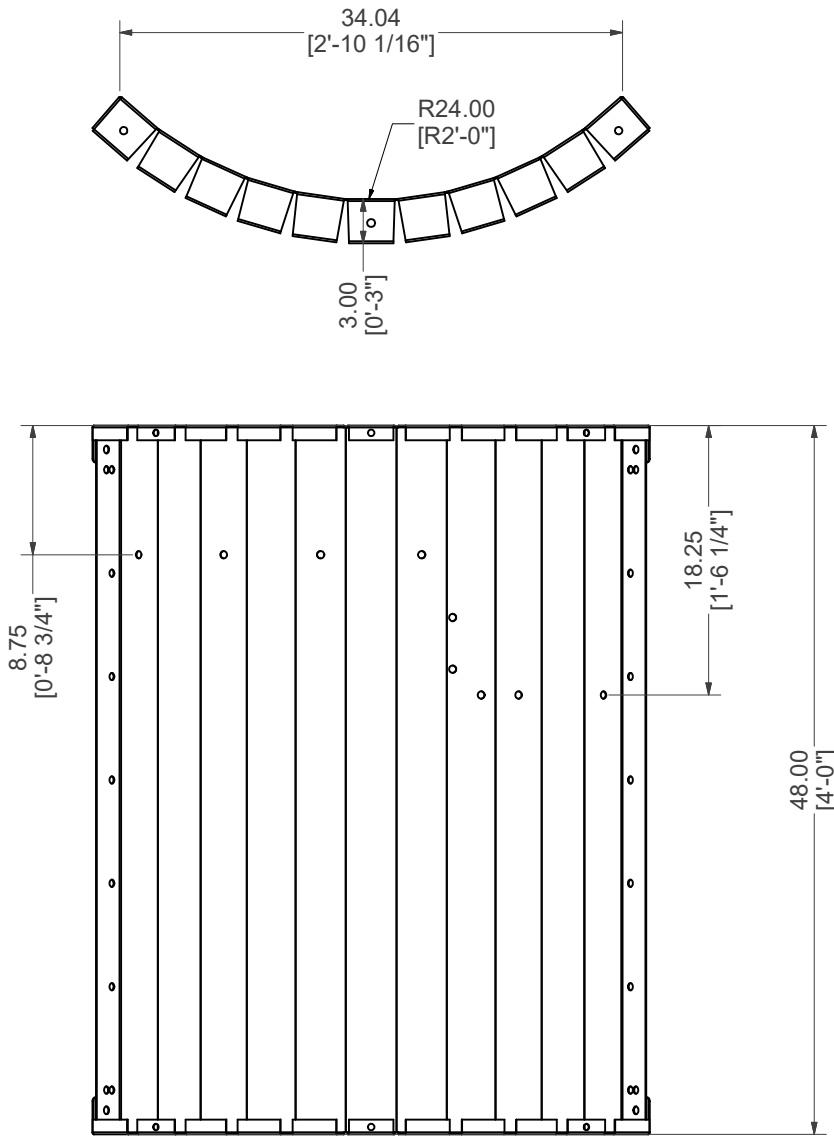
PART #: ESC-18089-SW 	WEIGHT: 95.55 lbmass	MACHINE TIME: N/A	FILE/DIRECTORY: C:\Vault\FTW\Design\CUSTOM STEPS\ESC-18000-18999\ESC-18089.idw
	TOLERANCES EXCEPT AS NOTED 0/0 0.0 0.00 0.000 0' ±1/8 ±0.25 ±0.0625 ±0.03125 ±1/2'	MATERIAL: DRAWN BY: SA	DATE: 1/9/2024 SHEET: 5 OF 17



NOTE:
RIGHT SIDE PART IS SYMMETRICAL TO LEFT SIDE PART SHOWN.


STRAIGHT, SIDE WALL, LEFT

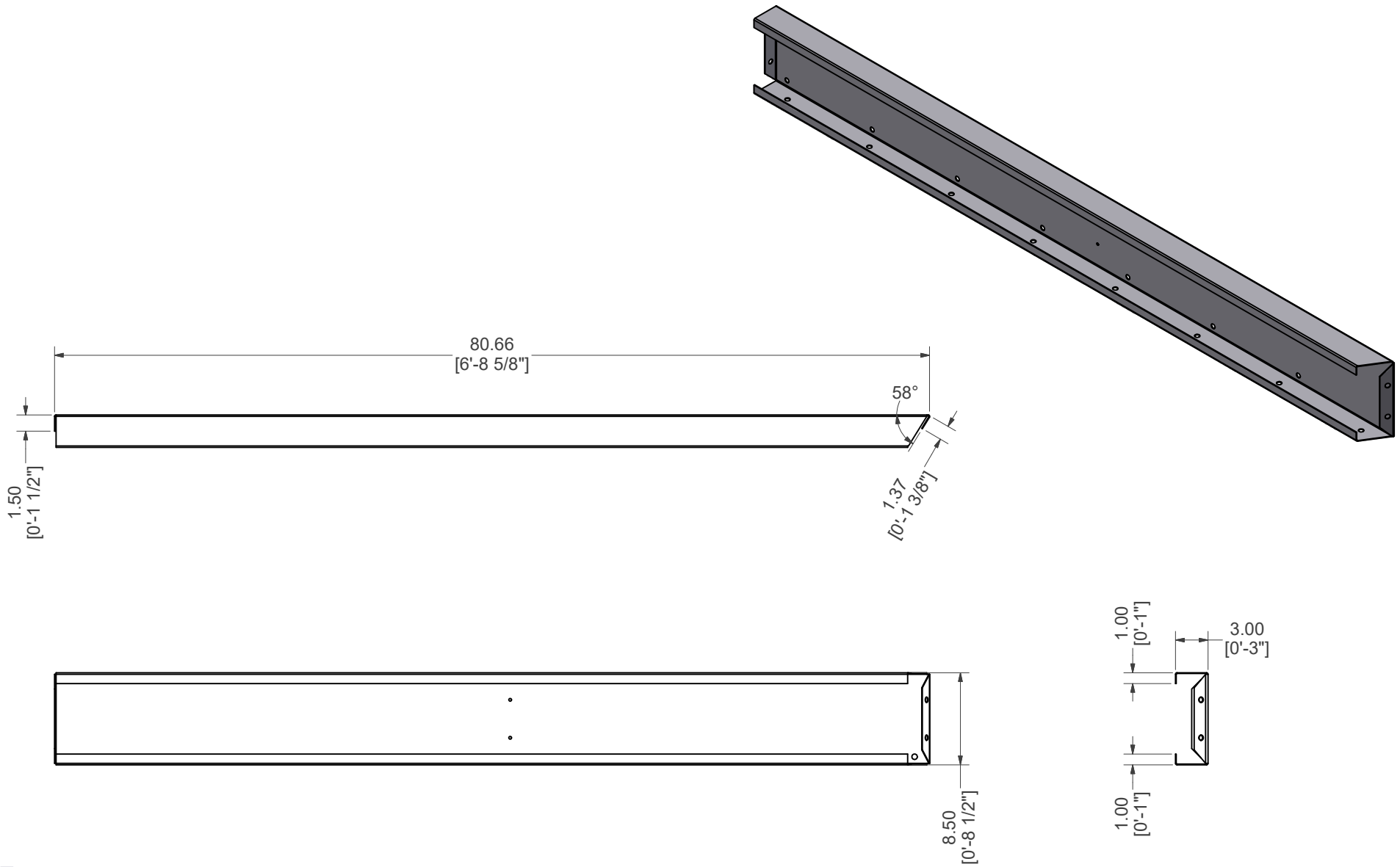
PART #: ESC-18089-SWL	WEIGHT: 45.09 lbmass	MACHINE TIME: N/A	FILE/DIRECTORY: C:\Vault\FTW\Design\CUSTOM STEPS\ESC-18000-18999\ESC-18089.idw	
	TOLERANCES EXCEPT AS NOTED 0/0 0.0 0.00 0.000 0' ±1/8 ±0.25 ±0.0625 ±0.03125 ±1/2'	MATERIAL: 14 GA. GALVANIZED	DATE : 1/9/2024	NOTES:
		DRAWN BY: SA	SHEET : 6 OF 17	



NOTE:
RIGHT SIDE PART IS SYMMETRICAL TO LEFT SIDE PART SHOWN.


RADIUS, CORNER WALL, LEFT

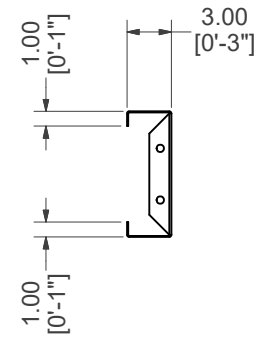
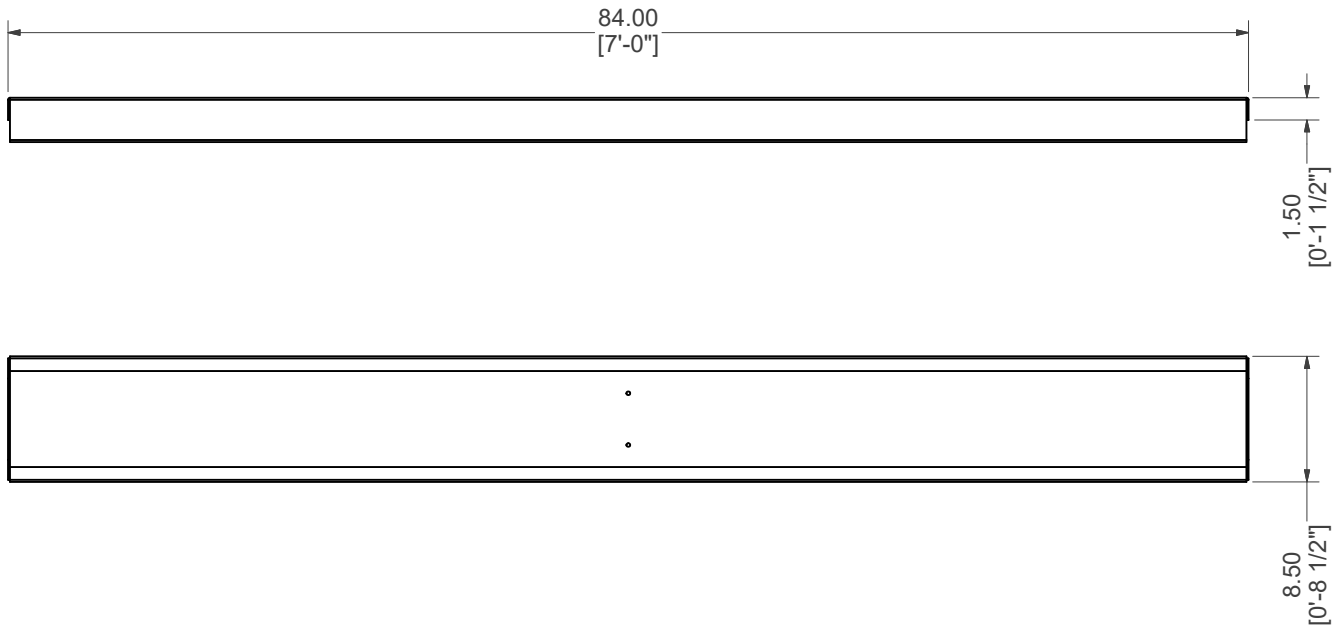
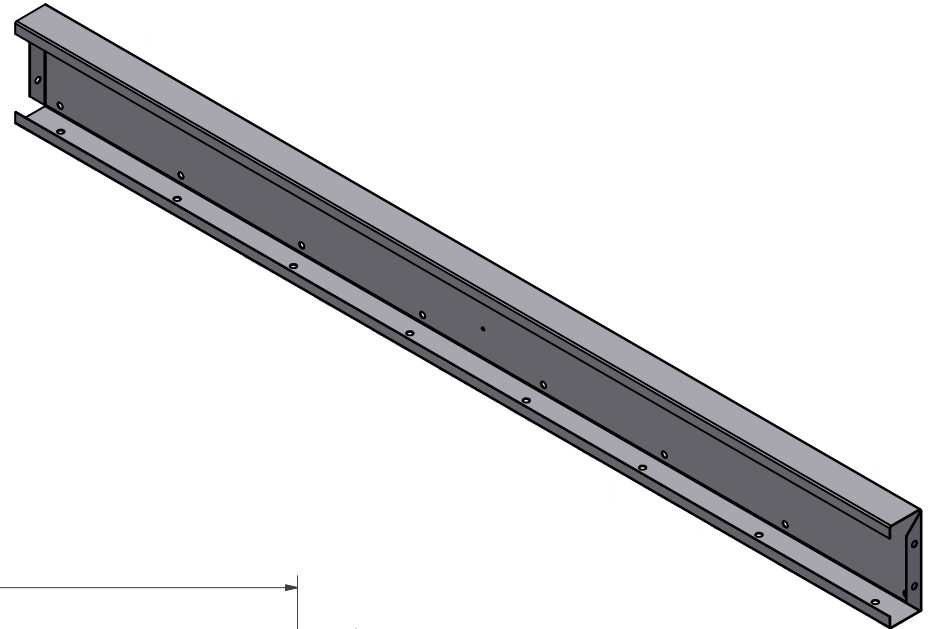
PART #: ESC-17044-CWL	WEIGHT: 46.50 lbmass	MACHINE TIME: N/A	FILE/DIRECTORY: C:\Vault\FTW\Design\CUSTOM STEPS\ESC-18000-18999\ESC-18089.idw
	TOLERANCES EXCEPT AS NOTED 0/0 0.0 0.00 0.000 0' ±1/8 ±0.25 ±0.0625 ±0.03125 ±1/2'	MATERIAL: 14 GA. GALVANIZED	DATE : 1/9/2024
		DRAWN BY: SA	SHEET : 7 OF 17
NOTES:			




NOTE:
 RIGHT SIDE PART IS SYMMETRICAL TO LEFT SIDE PART SHOWN.

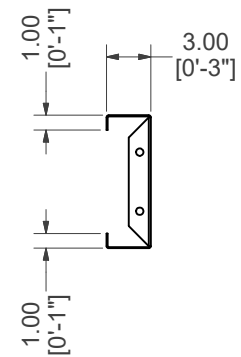
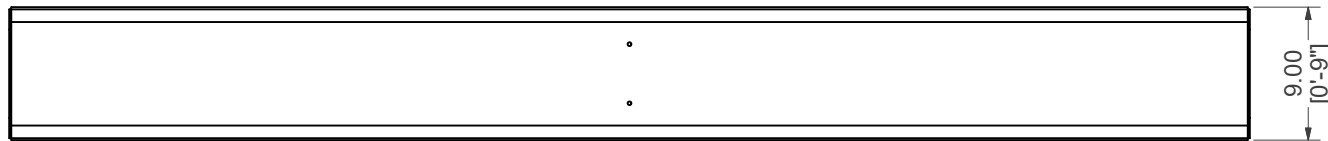
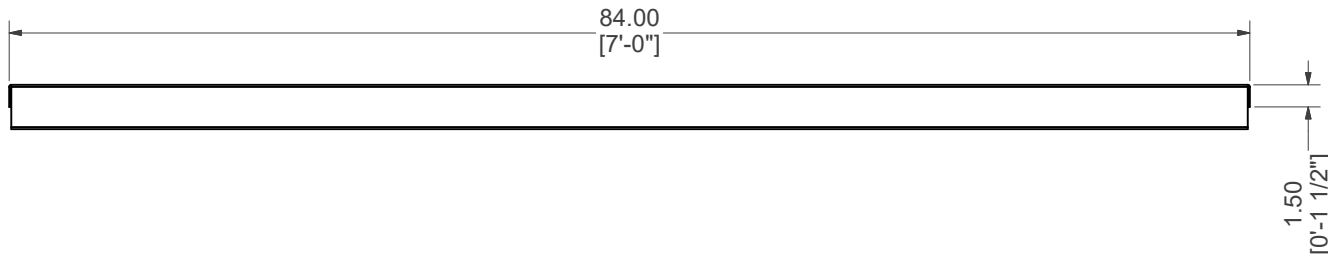
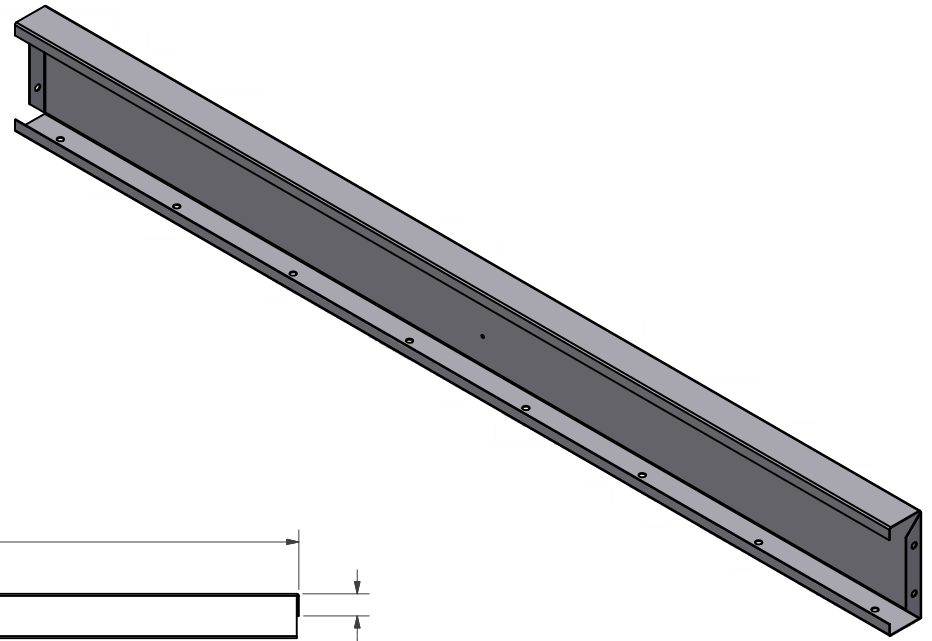
STRAIGHT, TOP RISER, LEFT

PART #: ESC-18089-TRL	WEIGHT: 26.36 lbmass	MACHINE TIME: N/A	FILE/DIRECTORY: C:\Vault\FTWDesign\CUSTOM STEPS\ESC-18000-18999\ESC-18089.idw
	TOLERANCES EXCEPT AS NOTED 0/0 0.0 0.00 0.000 0' ±1/8 ±0.25 ±0.0625 ±0.03125 ±1/2'	MATERIAL: 14 GA. GALVANIZED DRAWN BY: SA	DATE : 1/9/2024 SHEET : 8 OF 17
NOTES:			



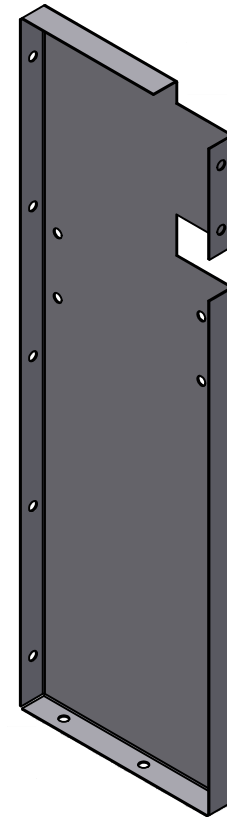
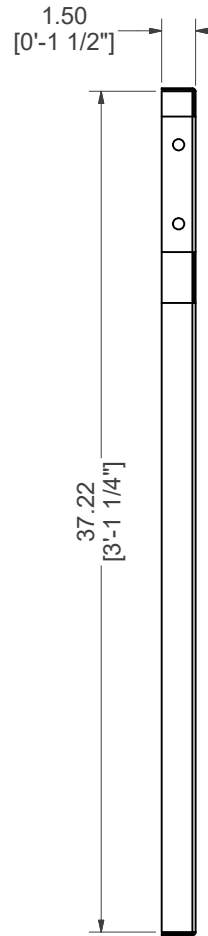
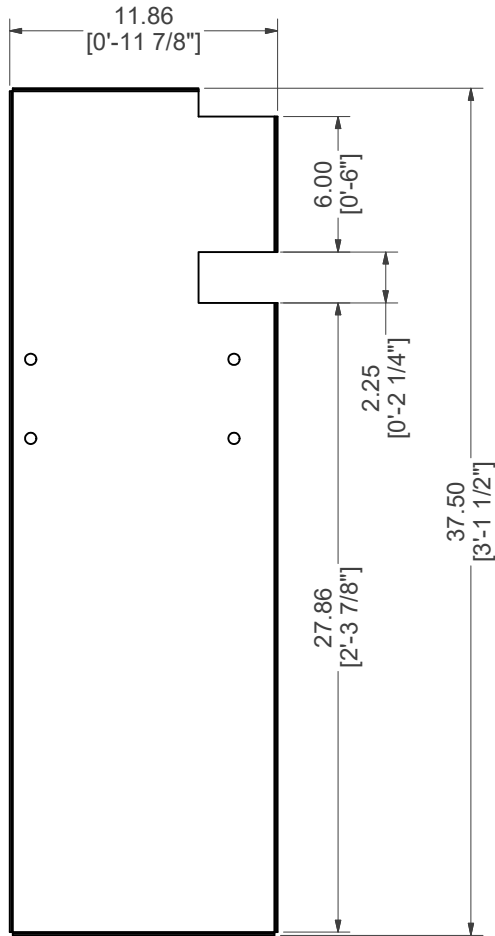
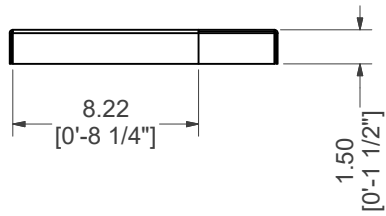
STRAIGHT, MIDDLE RISER

PART #: ESC-18089-MR 	WEIGHT: 27.64 lbmass	MACHINE TIME: N/A	FILE/DIRECTORY: C:\Vault\FTW\Design\CUSTOM STEPS\ESC-18000-18999\ESC-18089.idw
	TOLERANCES EXCEPT AS NOTED 0/0 0.0 0.00 0.000 0' ±1/8 ±0.25 ±0.0625 ±0.03125 ±1/2'	MATERIAL: 14 GA. GALVANIZED	DATE : 1/9/2024
DRAWN BY: SA	SHEET : 9 OF 17		



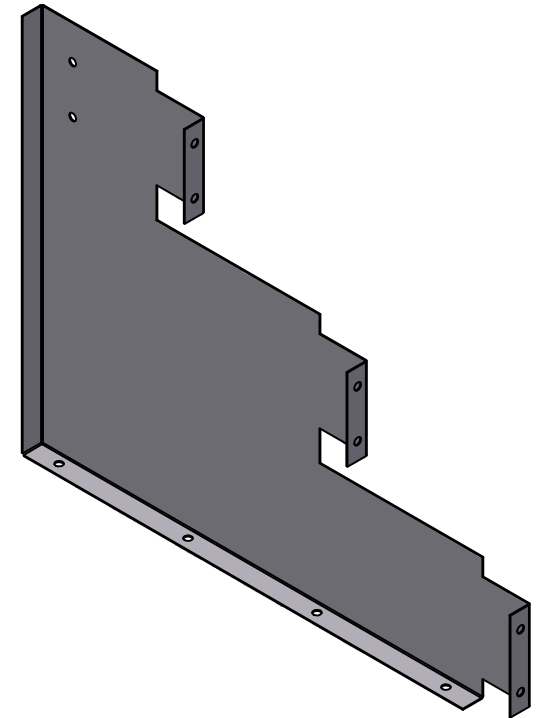
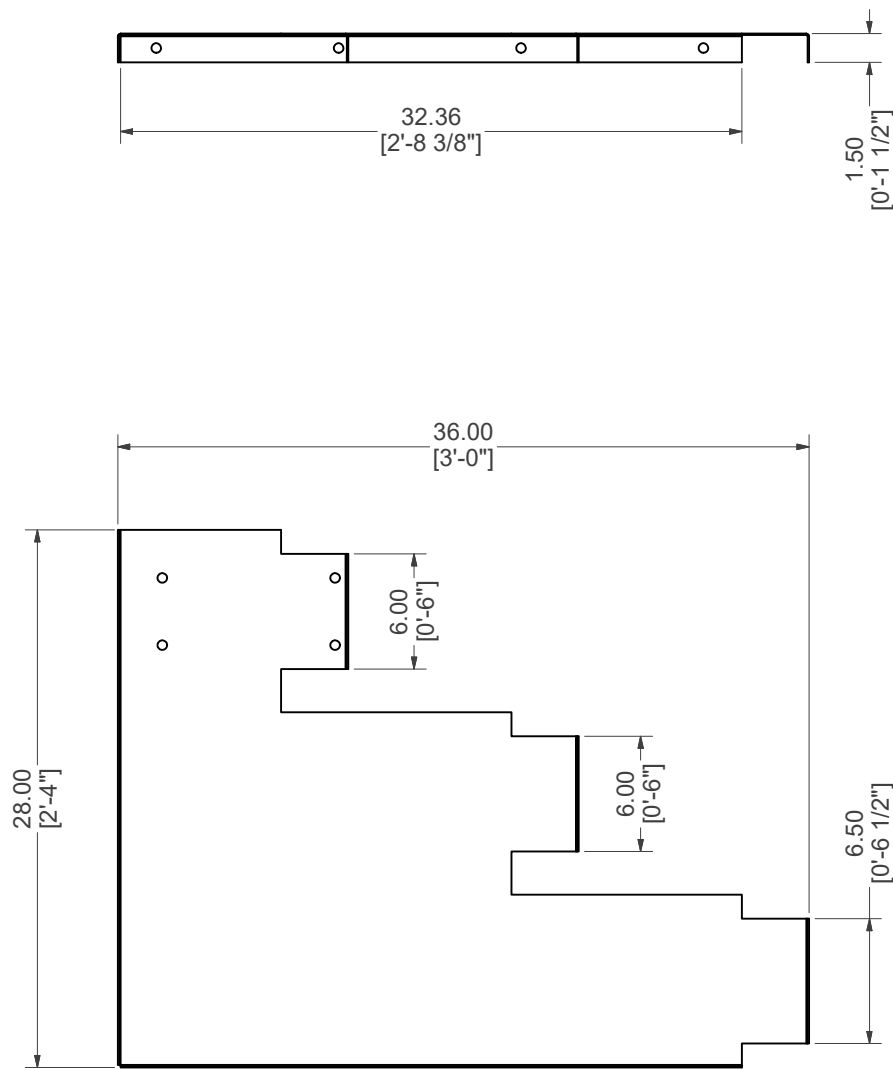
STRAIGHT, BOTTOM RISER

PART #: ESC-18089-BR	WEIGHT: 28.55 lbmass	MACHINE TIME: N/A	FILE/DIRECTORY: C:\Vault\FTW\Design\CUSTOM STEPS\ESC-18000-18999\ESC-18089.idw
	TOLERANCES EXCEPT AS NOTED 0/0 0.0 0.00 0.000 0' ±1/8 ±0.25 ±0.0625 ±0.03125 ±1/2'	MATERIAL: 14 GA. GALVANIZED DRAWN BY: SA	DATE : 1/9/2024 SHEET : 10 OF 17
NOTES:			



BRACE, TOP RISER MIDDLE SUPPORT

PART #: ESC-18089-TRMS 	WEIGHT: 11.29 lbmass	MACHINE TIME: N/A	FILE/DIRECTORY: C:\Vault\FTW\Design\CUSTOM STEPS\ESC-18000-18999\ESC-18089.idw
	TOLERANCES EXCEPT AS NOTED 0/0 0.0 0.00 0.000 0' ±1/8 ±0.25 ±0.0625 ±0.03125 ±1/2'	MATERIAL: 14 GA. GALVANIZED	DATE: 1/9/2024
	DRAWN BY: SA	SHEET: 11 OF 17	



BRACE, 3-RISER MIDDLE SUPPORT

PART #: ESC-17837-CSB

WEIGHT:
15.01 lbmass

MACHINE TIME:
N/A

FILE/DIRECTORY:

C:\Vault\FTW\Design\CUSTOM STEPS\ESC-18000-18999\ESC-18089.idw

latham
The Pool Company

TOLERANCES EXCEPT
AS NOTED
0/0 0.0 0.00 0.000 0'
±1/8 ±0.25 ±0.0625 ±0.03125 ±1/2'

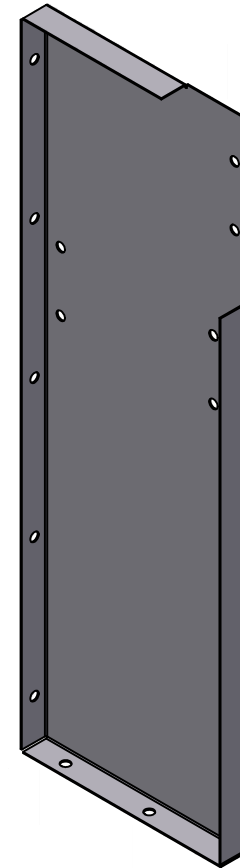
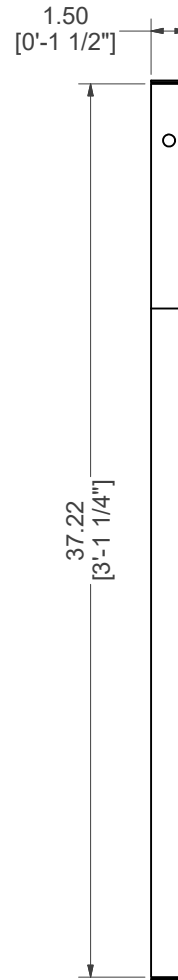
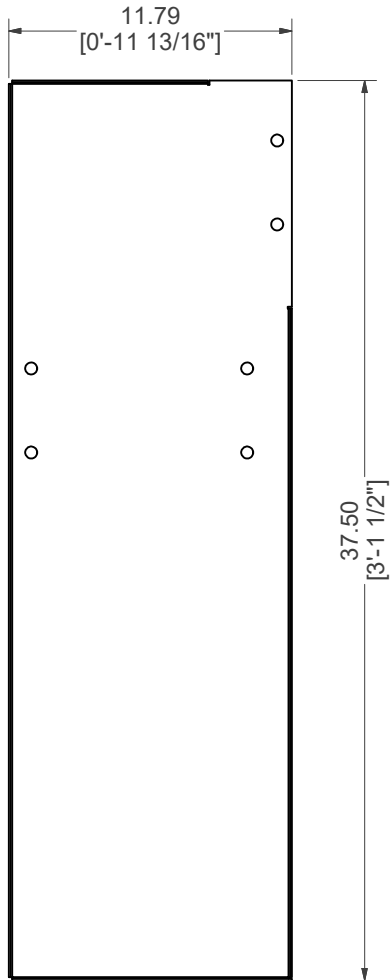
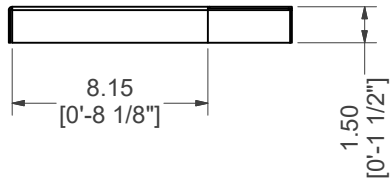
MATERIAL:
14 GA. GALVANIZED

DATE: 1/9/2024


NOTES:

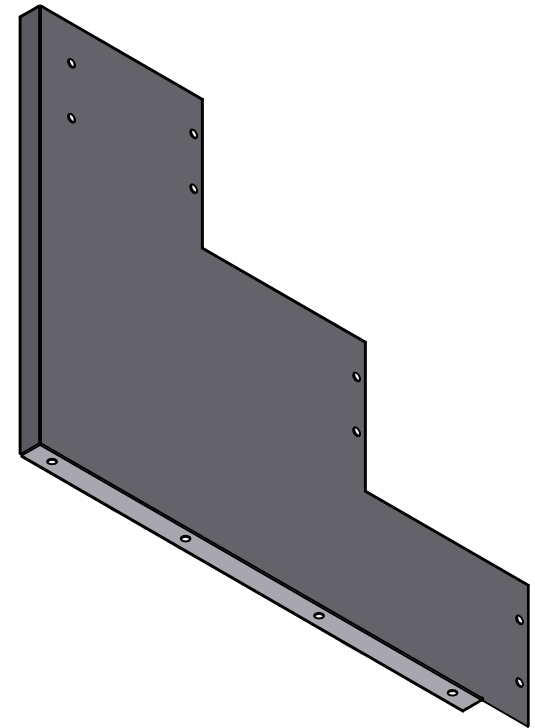
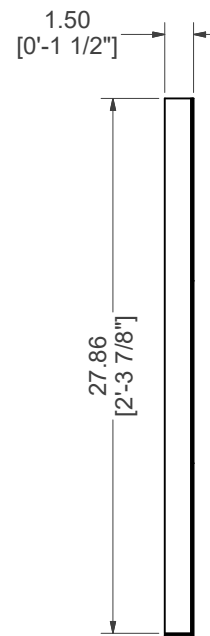
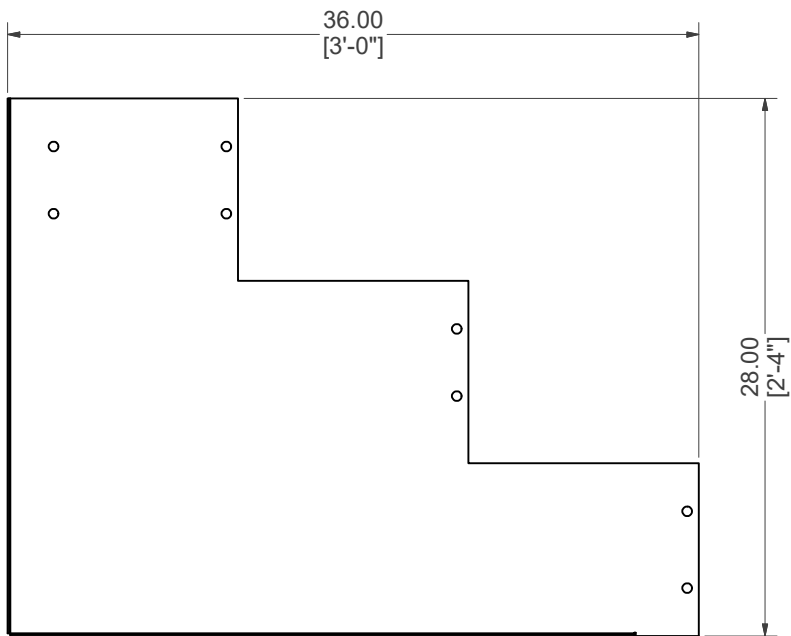
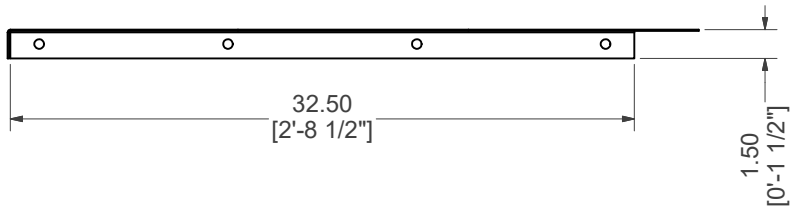
DRAWN BY: SA

SHEET: 12 OF 17




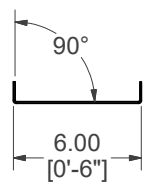
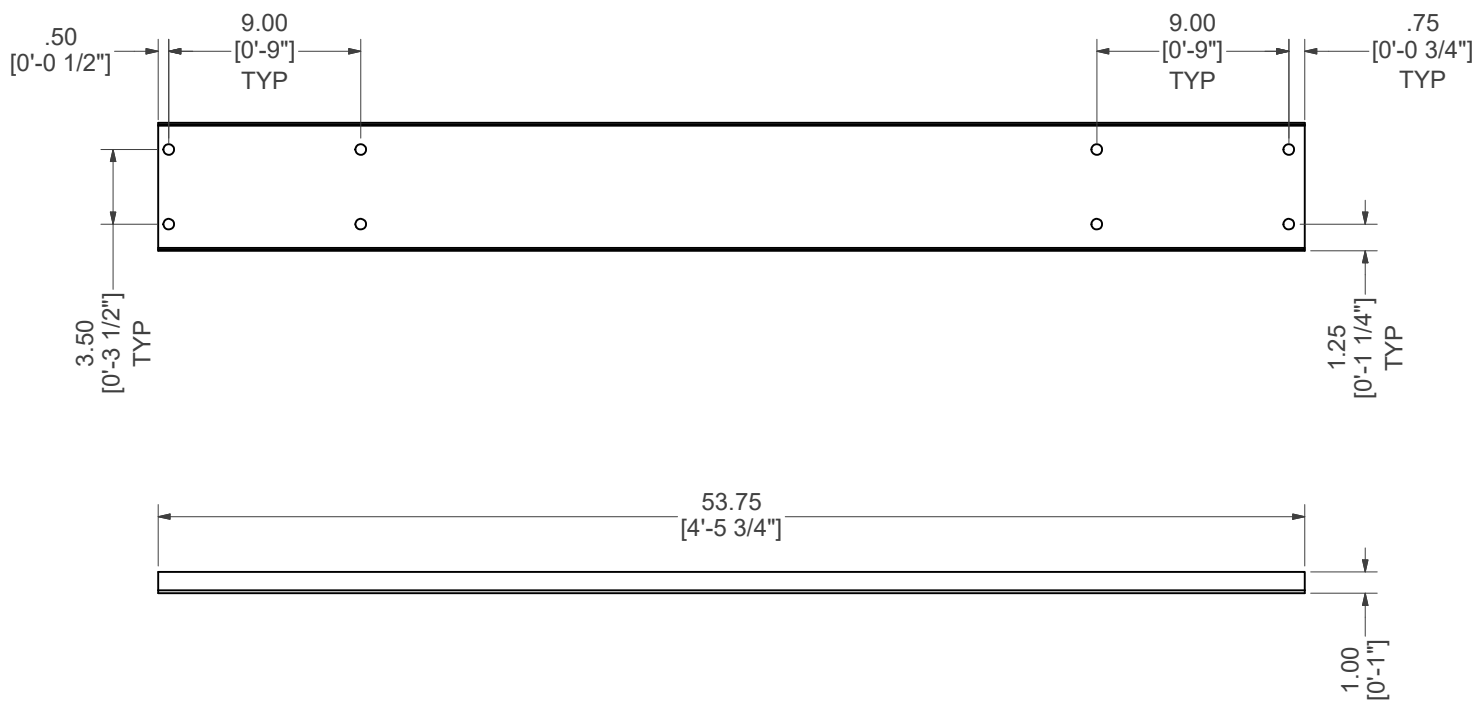
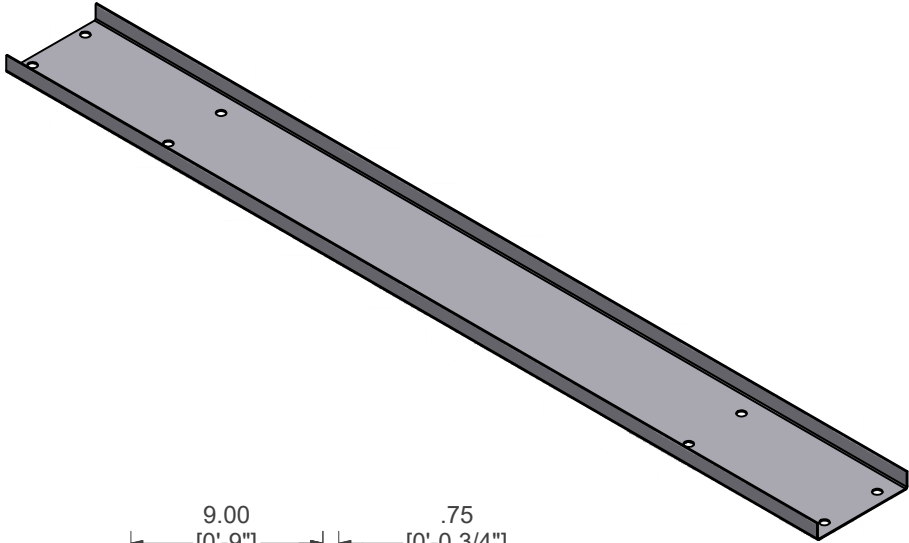
BRACE, TOP RISER SUPPORT

PART #: ESC-18089-TRS	WEIGHT: 11.32 lbmass	MACHINE TIME: N/A	FILE/DIRECTORY: C:\Vault\FTWDesign\CUSTOM STEPS\ESC-18000-18999\ESC-18089.idw	
	TOLERANCES EXCEPT AS NOTED 0/0 0.0 0.00 0.000 0' ±1/8 ±0.25 ±0.0625 ±0.03125 ±1/2'	MATERIAL: 14 GA. GALVANIZED	DATE : 1/9/2024	NOTES:
		DRAWN BY: SA	SHEET : 13 OF 17	




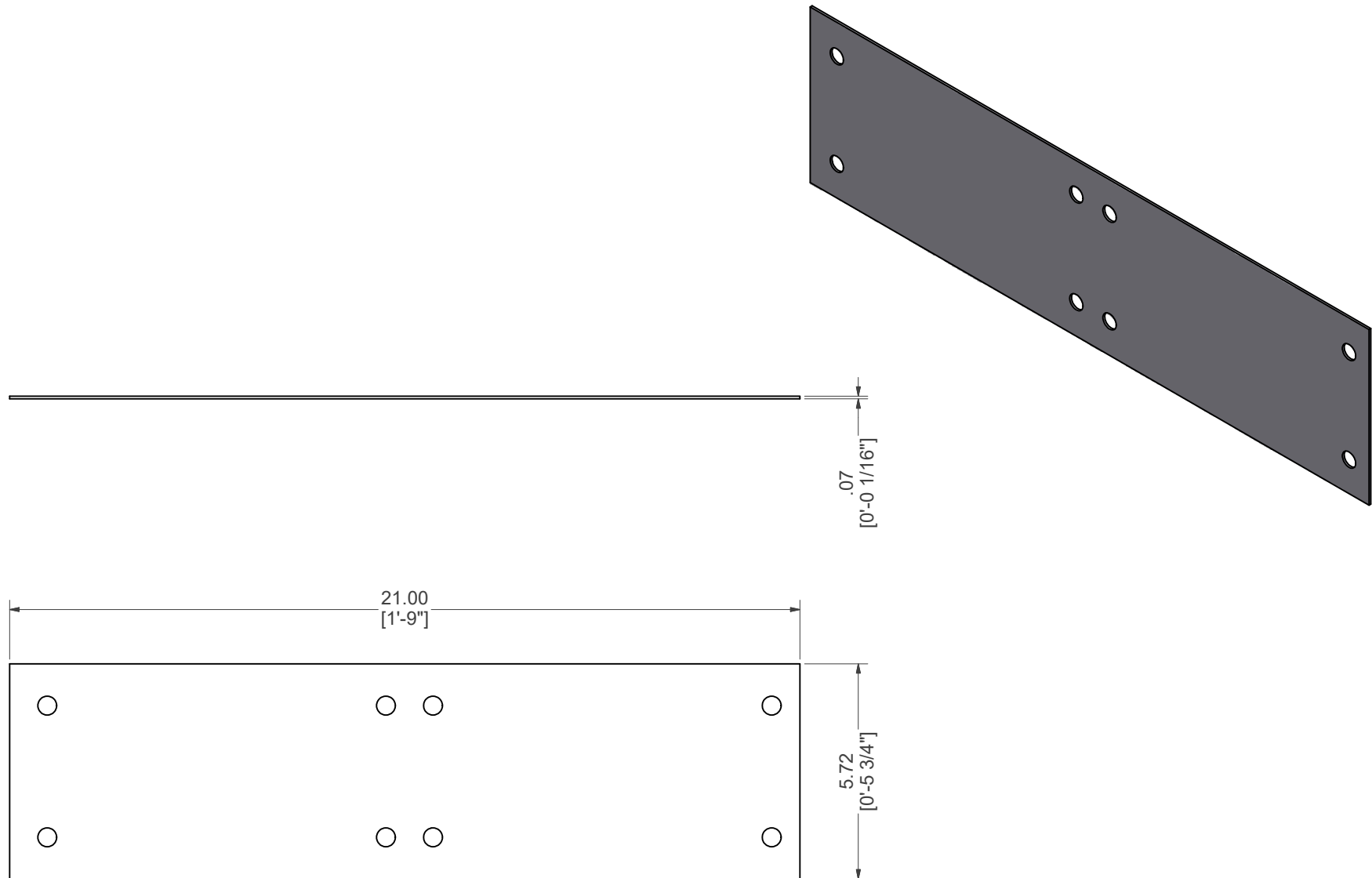
BRACE, 3-RISER SUPPORT

PART #: ESC-17837-B 	WEIGHT: 15.18 lbmass	MACHINE TIME: N/A	FILE/DIRECTORY: C:\Vault\FTW\Design\CUSTOM STEPS\ESC-18000-18999\ESC-18089.idw
	TOLERANCES EXCEPT AS NOTED 0/0 0.0 0.00 0.000 0' ±1/8 ±0.25 ±0.0625 ±0.03125 ±1/2'	MATERIAL: 14 GA. GALVANIZED	DATE: 1/9/2024
DRAWN BY: SA	SHEET: 14 OF 17		




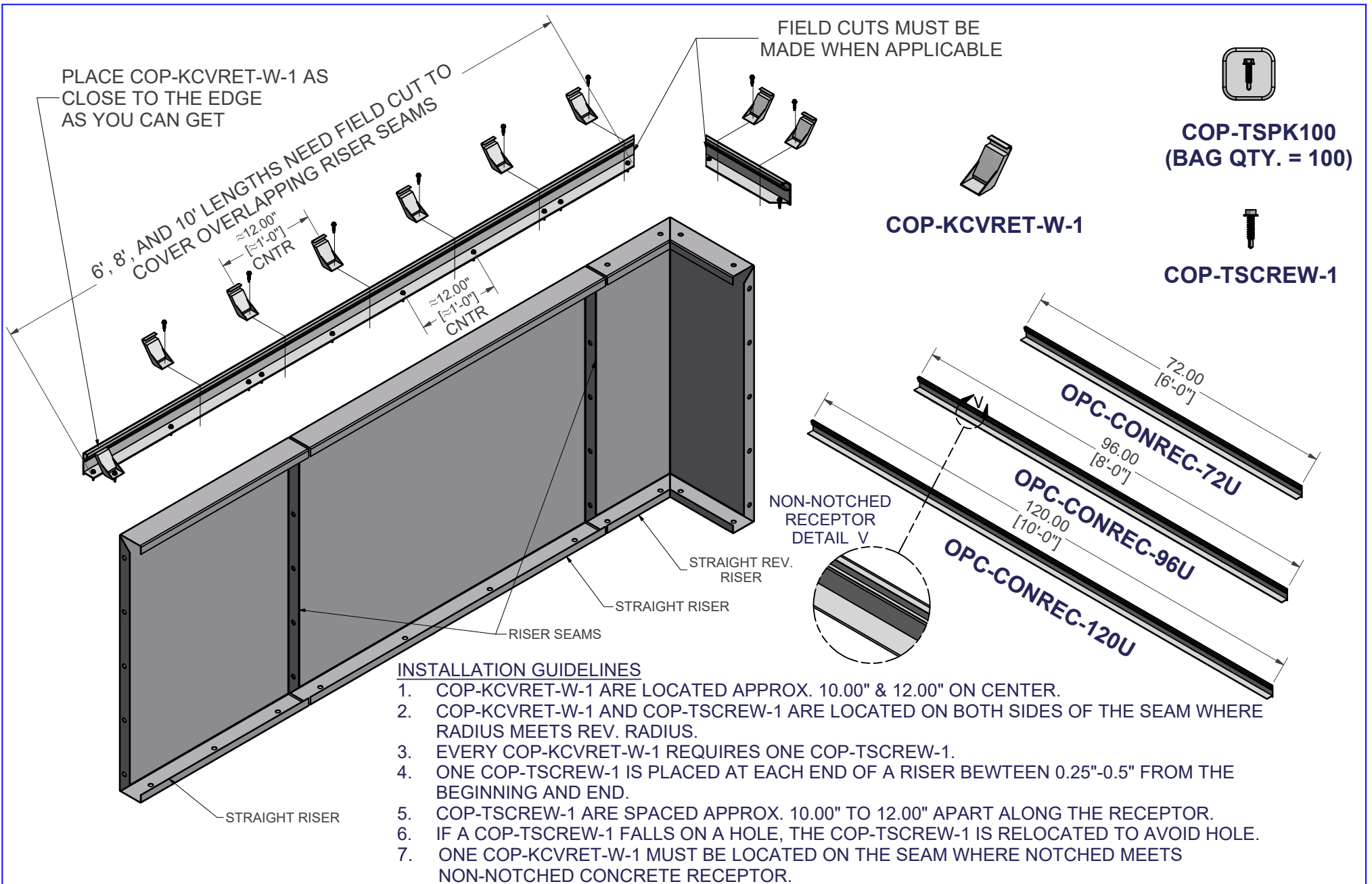
BRACE, CENTER SUPPORT

PART #: ESC-18089-CB 	WEIGHT: 8.45 lbmass	MACHINE TIME: N/A	FILE/DIRECTORY: C:\Vault\FTW\Design\CUSTOM STEPS\ESC-18000-18999\ESC-18089.idw
	TOLERANCES EXCEPT AS NOTED 0/0 0.0 0.00 0.000 0' ±1/8 ±0.25 ±0.0625 ±0.03125 ±1/2'	MATERIAL: 14 GA. GALVANIZED	DATE: 1/9/2024
	DRAWN BY: SA	SHEET: 15 OF 17	



BRACE, FLAT PLATE

PART #: ESC-18089-PT	WEIGHT: 2.41 lbmass	MACHINE TIME: N/A	FILE/DIRECTORY: C:\Vault\FTW\Design\CUSTOM STEPS\ESC-18000-18999\ESC-18089.idw	
	TOLERANCES EXCEPT AS NOTED 0/0 0.0 0.00 0.000 0' ±1/8 ±0.25 ±0.0625 ±0.03125 ±1/2'	MATERIAL: 14 GA. GALVANIZED DRAWN BY: SA	DATE : 1/9/2024 SHEET : 16 OF 17	NOTES:



INSTALLATION GUIDELINES

1. COP-KCVRET-W-1 ARE LOCATED APPROX. 10.00" & 12.00" ON CENTER.
2. COP-KCVRET-W-1 AND COP-TSCREW-1 ARE LOCATED ON BOTH SIDES OF THE SEAM WHERE RADIUS MEETS REV. RADIUS.
3. EVERY COP-KCVRET-W-1 REQUIRES ONE COP-TSCREW-1.
4. ONE COP-TSCREW-1 IS PLACED AT EACH END OF A RISER BETWEEN 0.25"-0.5" FROM THE BEGINNING AND END.
5. COP-TSCREW-1 ARE SPACED APPROX. 10.00" TO 12.00" APART ALONG THE RECEPTOR.
6. IF A COP-TSCREW-1 FALLS ON A HOLE, THE COP-TSCREW-1 IS RELOCATED TO AVOID HOLE.
7. ONE COP-KCVRET-W-1 MUST BE LOCATED ON THE SEAM WHERE NOTCHED MEETS NON-NOTCHED CONCRETE RECEPTOR.

NON-NOTCHED CONCRETE RECEPTOR FIELD INSTALLATION

PARTS # STRAIGHT CONCRETE RECEPTOR	WEIGHT: 77.51 lbmass	MACHINE TIME: N/A	FILE/DIRECTORY: C:\Vault\FTW\Design\CUSTOM STEPS\ESC-18000-18999\ESC-18089.idw
	TOLERANCES EXCEPT AS NOTED 0/0 0.0 0.00 0.000 0' ±1/8 ±0.25 ±0.0625 ±0.03125 ±1/2"	MATERIAL: DRAWN BY: SA	DATE: 1/9/2024 SHEET: 17 OF 17

