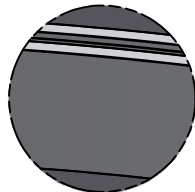
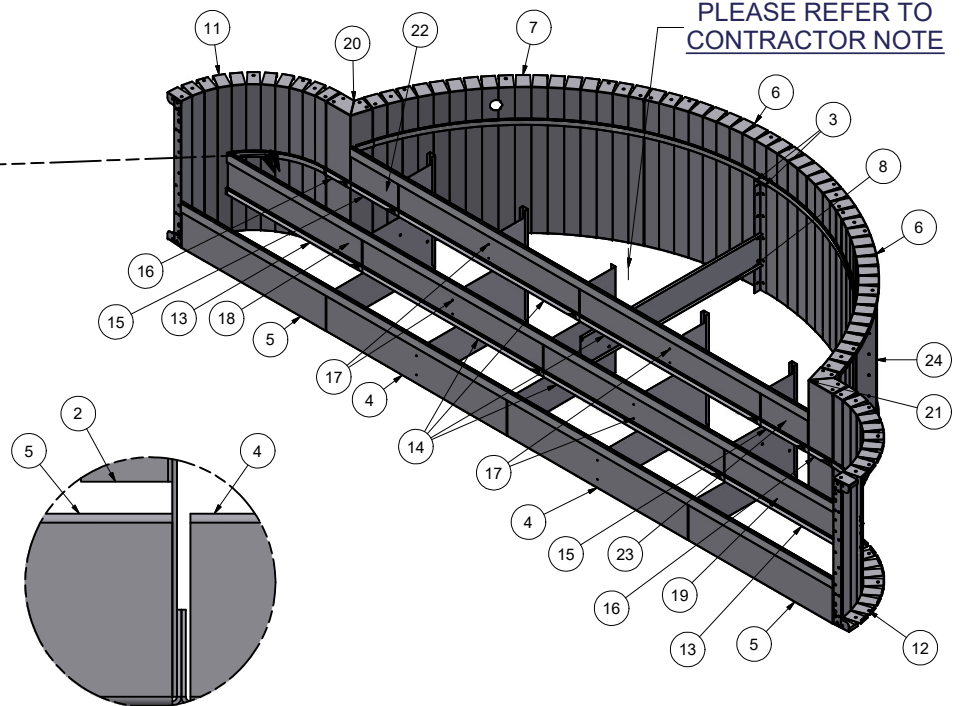


Parts List			
ITEM	QTY	PART NUMBER	DESCRIPTION
1	60	COP-KCVRET-W-1	COP COPING STIFFENER 1 5/8"-1PC
2	3	ESC-18419-B	BRACE, 3-RISER SUPPORT
3	2	ESC-18419-BB	BRACE, 90° L BRACKET
4	2	ESC-18419-BR	STRAIGHT, BOTTOM RISER
5	2	ESC-18419-BRE	STRAIGHT, BOTTOM RISER, END
6	2	ESC-18419-BW	RADIUS, BACK WALL
7	1	ESC-18419-BWL	RADIUS, BACK WALL, LEFT
8	1	ESC-18419-CB	BRACE, CENTER SUPPORT
9	2	ESC-18419-CSB	BRACE, 3-RISER SUPPORT
10	4	ESC-18419-DS	BRACE, DRIVE STAKE CHANNEL SET
11	1	ESC-18419-FWL	RADIUS, FRONT WALL, LEFT
12	1	ESC-18419-FWR	RADIUS, FRONT WALL, RIGHT
13	2	ESC-18419-LV	STRAIGHT, LEVELER
14	4	ESC-18419-LV1	STRAIGHT, LEVELER1
15	2	ESC-18419-LV2	STRAIGHT, LEVELER2
16	2	ESC-18419-LV3	STRAIGHT, LEVELER3
17	4	ESC-18419-MR	STRAIGHT, MIDDLE RISER
18	1	ESC-18419-MRL	STRAIGHT, MIDDLE RISER, LEFT
19	1	ESC-18419-MRR	STRAIGHT, MIDDLE RISER, RIGHT
20	1	ESC-18419-SRWL	STR REV, WALL, LEFT
21	1	ESC-18419-SRWR	STR REV, WALL, RIGHT
22	1	ESC-18419-TRL	STRAIGHT, TOP RISER, LEFT
23	1	ESC-18419-TRR	STRAIGHT, TOP RISER, RIGHT
24	3	M0065-1	PANEL Z-RIB W/BUTTRESS HOLES
25	0'	OPC-CONREC-XX	NOTCHED CONCRETE RECEPTOR
26	49'	OPC-CONREC-XXU	UN-NOTCHED CONCRETE RECEPTOR
27	55'	SSC-1099-PFT	STEEL STEP PVC BEAD RETAINER (PER FT)

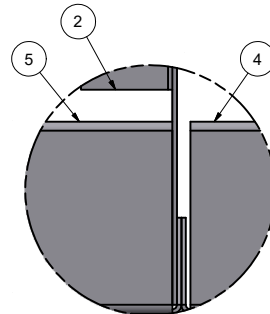
**NOTE:**  
RIGHT AND LEFT SIDE  
PARTS ARE SYMMETRICAL.



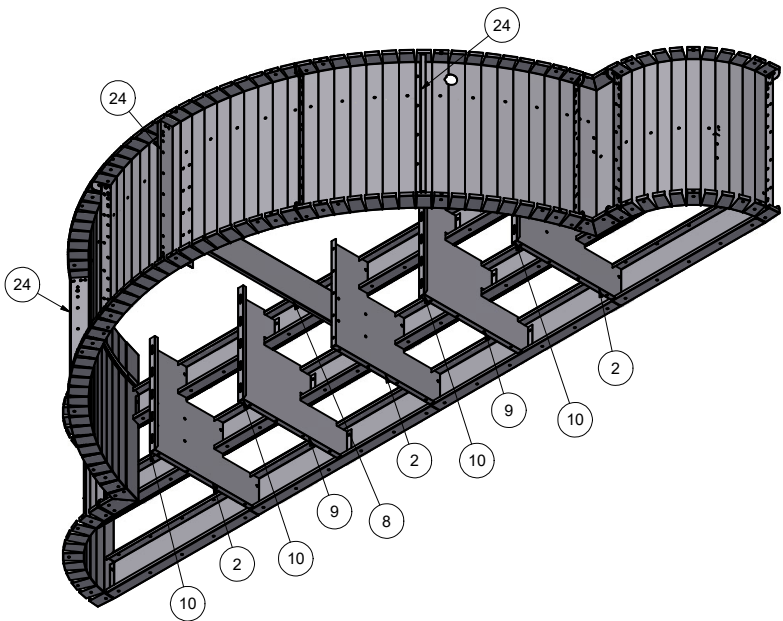
**BEAD  
RECEIVER  
DETAIL**



**PLEASE REFER TO  
CONTRACTOR NOTE**



**TOP VIEW**  
BRACE CONNECTED TO  
INSIDE FLANGE OF LEFT RISER



KEEP BEAD RECEIVERS ATTACHED TO THE WALLS AND RISERS FOR SHIPPING. A TOTAL OF 660" (55') OF BEAD RECEIVER IS REQUIRED.

**CONTRACTOR MUST FIELD FIT ALL CONCRETE RECEPTOR.**  
TOTALS REQUIRED FOR THIS CUSTOM PRODUCT APPLICATION.

- OPC-CONREC-XX (NOTCHED) = 0" (0')
- OPC-CONREC-XXU (UN-NOTCHED) = 588" (49')
- COP-KCVRET-W-1 (STIFFENER) = 60

**CONTRACTOR NOTE:**  
CONTRACTOR IS RESPONSIBLE FOR SECURING ALL RISERS INTO PLACE WITH REBAR HOLES BEFORE BACKFILLING THIS CUSTOM STEP

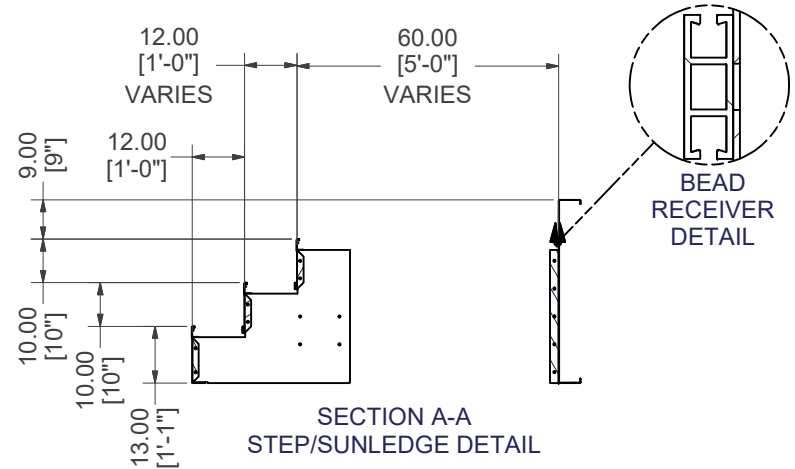
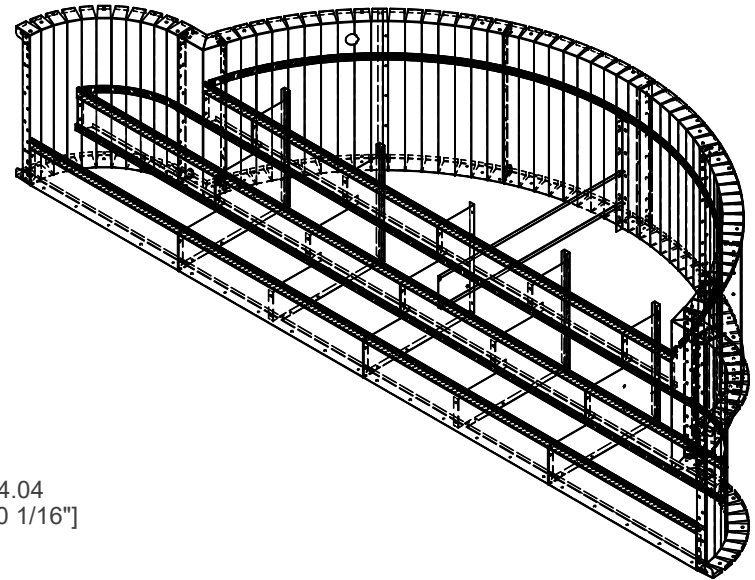
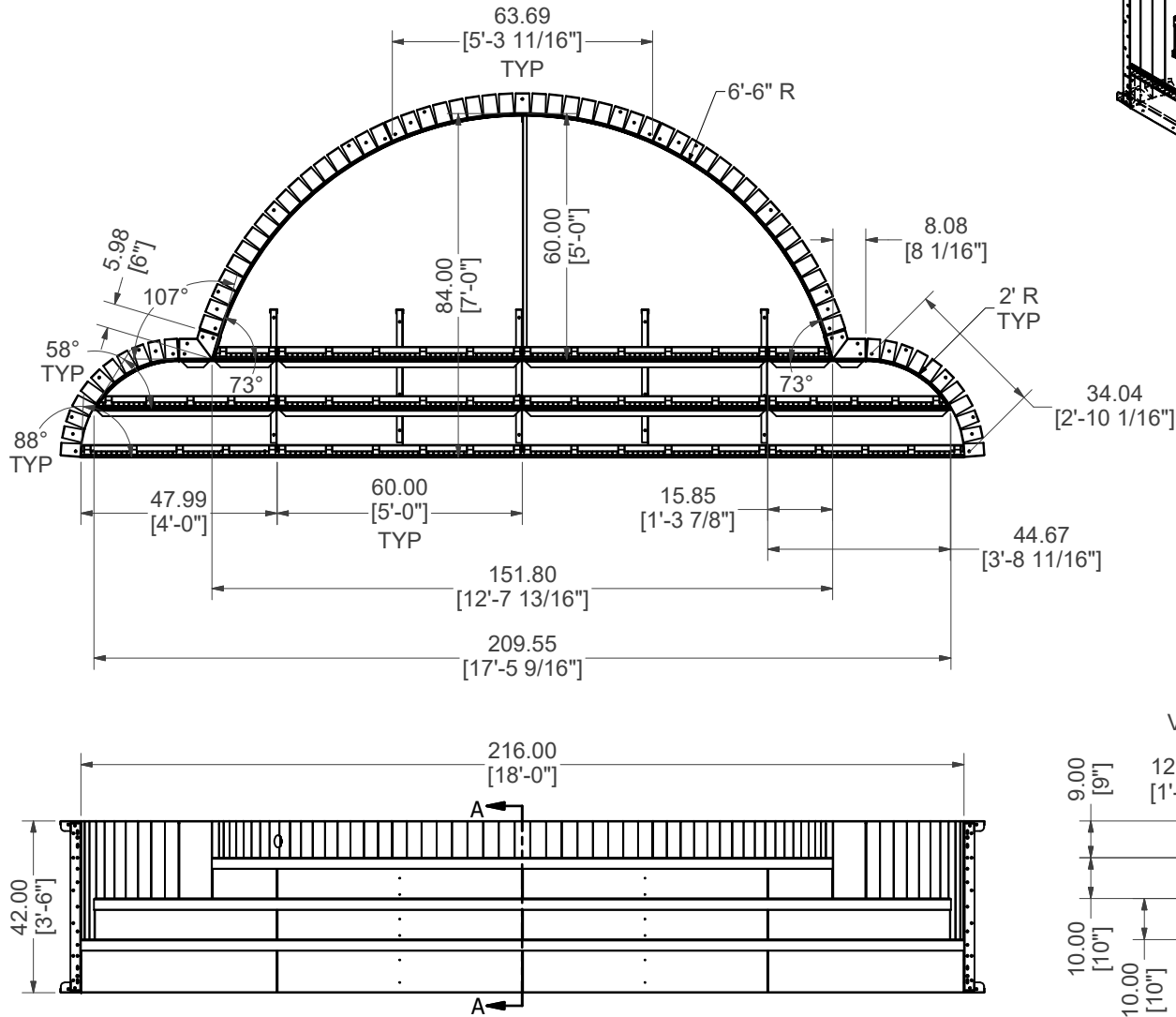
**CONTRACTOR NOTE:**  
BACK FILL STEP AREA WITH COMPACTED EARTH MATERIAL. FINISH STEP/SUNLEDGE AREA WITH 2" OF HARDEN FLOOR MATERIAL TO MATCH REQUIRED DEPTH. (FLUSH WITH TOP OF BEAD RECEIVER).

# 18' X 7' X 6'-6"R OPEN TOP ROMAN STEP W/ 5' TOP TREAD

<b>PART #:</b> <b>ESC-18419</b>	<b>WEIGHT:</b> 713.44 lbmass	<b>MACHINE TIME:</b> N/A	<b>FILE/DIRECTORY:</b> C:\Vault\FTW\Design\CUSTOM STEPS\ESC-18000-18999\ESC-18419.idw
	<b>TOLERANCES EXCEPT AS NOTED</b> 0/0 0.0 0.00 0.000 0' ±1/8 ±0.25 ±0.0625 ±0.03125 ±1/2'	<b>MATERIAL:</b>  <b>DRAWN BY:</b> VD	<b>DATE:</b> 3/29/2024  <b>SHEET:</b> 1 OF 20



NOTE:  
RIGHT AND LEFT SIDE  
PARTS ARE SYMMETRICAL.

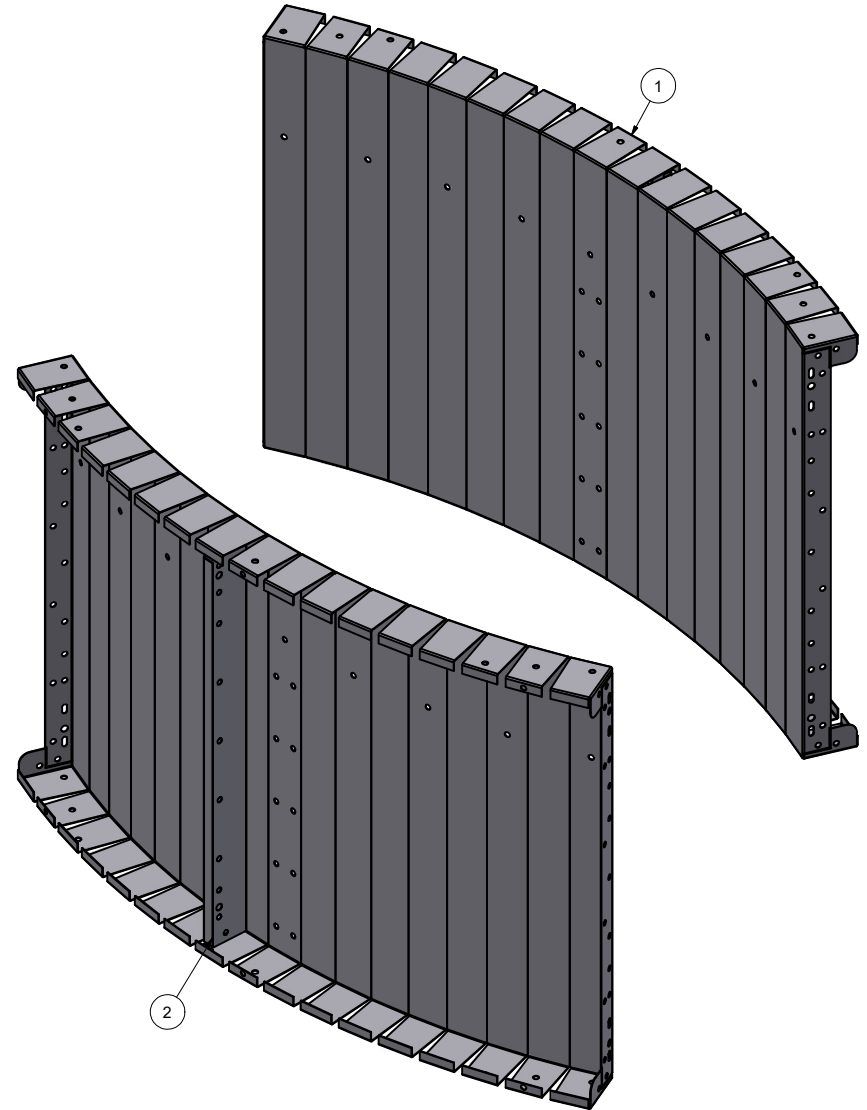
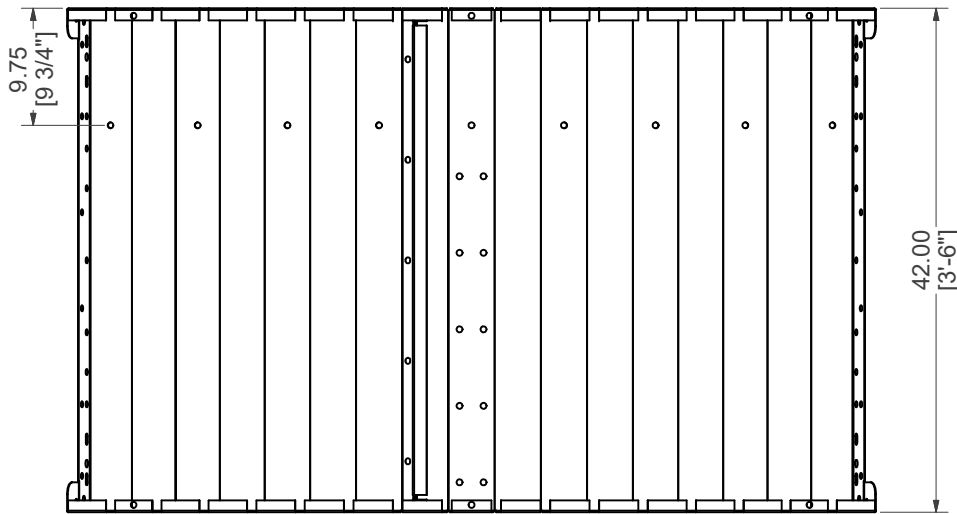
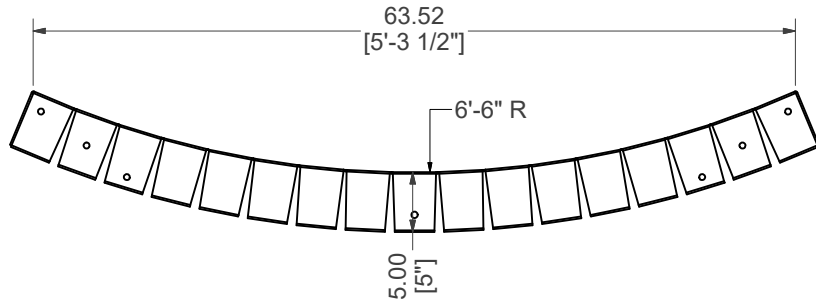


# 18' X 7' X 6'-6"R OPEN TOP ROMAN STEP W/ 5' TOP TREAD


<b>PART #:</b> ESC-18419  	<b>WEIGHT:</b> 713.44 lbmass	<b>MACHINE TIME:</b> N/A	<b>FILE/DIRECTORY:</b> C:\Vault\FTW\Design\CUSTOM STEPS\ESC-18000-18999\ESC-18419.idw
	<b>TOLERANCES EXCEPT AS NOTED</b> 0/0 0.0 0.00 0.000 0' ±1/8 ±0.25 ±0.0625 ±0.03125 ±1/2"	<b>MATERIAL:</b>	<b>DATE:</b> 3/29/2024
<b>DRAWN BY:</b> VD	<b>SHEET:</b> 2 OF 20		

Parts List			
ITEM	QTY	PART NUMBER	DESCRIPTION
1	1	ESC-18419-BW	RADIUS, BACK WALL
2	1	M0065-1	PANEL Z-RIB W/BUTTRESS HOLES

# WELDCODE #9



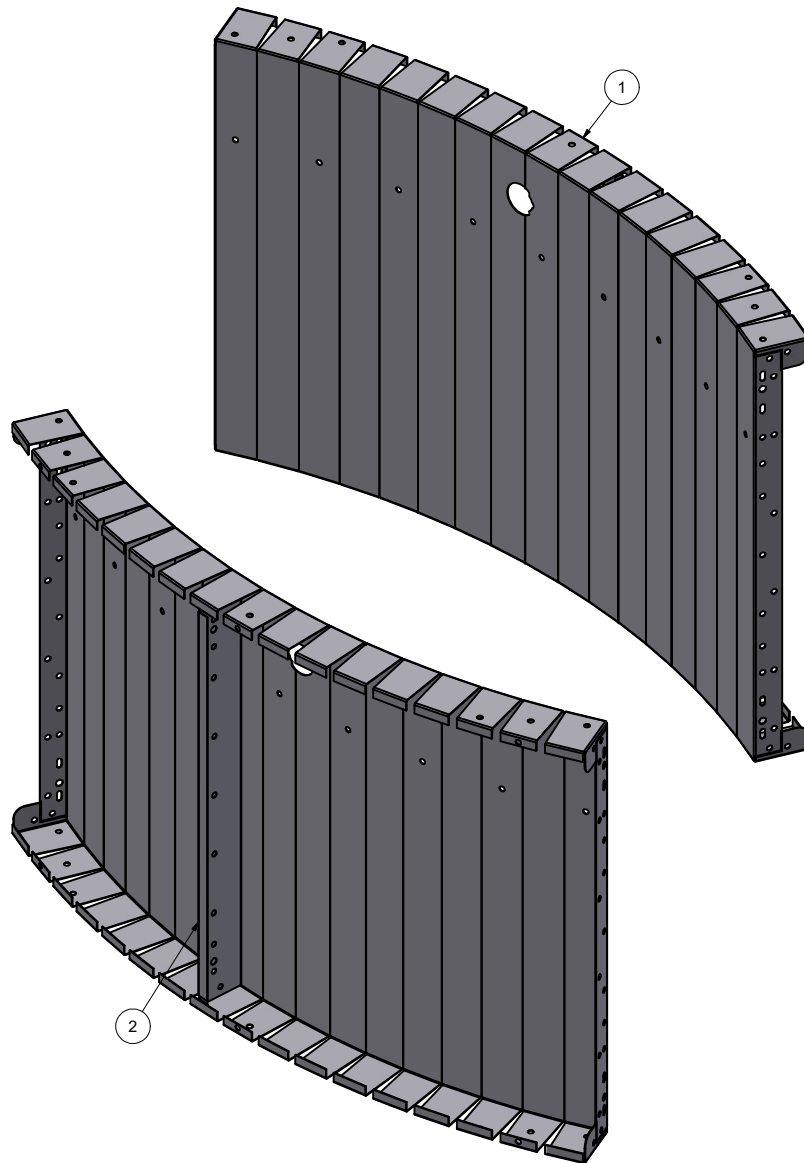
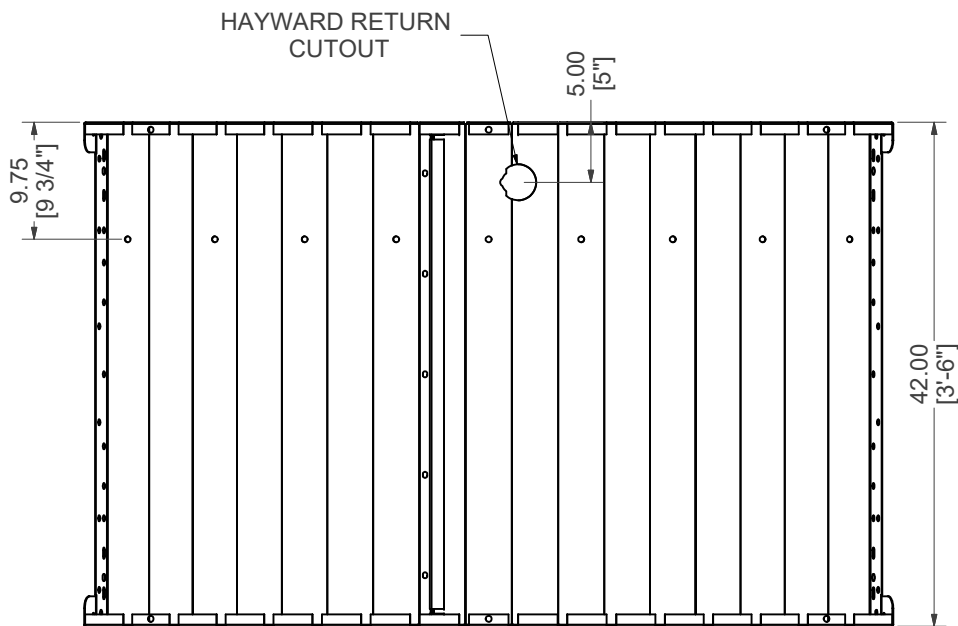
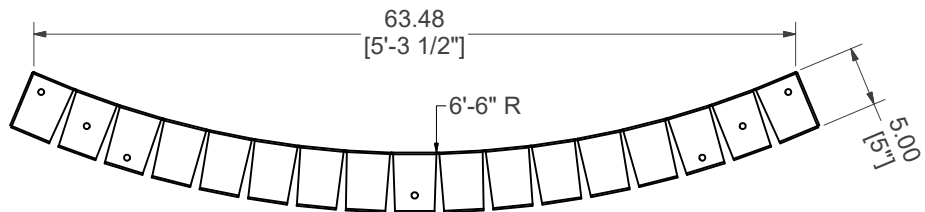
## RADIUS, BACK WALL W/Z-RIB

<b>PART #:</b> ESC-18419-BW 	<b>WEIGHT:</b> 79.14 lbmass	<b>MACHINE TIME:</b> N/A	<b>FILE/DIRECTORY:</b> C:\Vault\FTW\Design\CUSTOM STEPS\ESC-18000-18999\ESC-18419.idw
	<b>TOLERANCES EXCEPT AS NOTED</b> 0/0 0.0 0.00 0.000 0' ±1/8 ±0.25 ±0.0625 ±0.03125 ±1/2'	<b>MATERIAL:</b>	<b>DATE:</b> 3/29/2024 <b>SHEET:</b> 3 OF 20
		<b>DRAWN BY:</b> VD	

Parts List

ITEM	QTY	PART NUMBER	DESCRIPTION
1	1	ESC-18419-BWL	RADIUS, BACK WALL, LEFT
2	1	M0065-1	PANEL Z-RIB W/BUTTRESS HOLES

# WELDCODE #9



## RADIUS, BACK WALL, LEFT W/Z-RIB

**PART #:** ESC-18419-BWL

**WEIGHT:**  
79.04 lbmass

**MACHINE TIME:**  
N/A

**FILE/DIRECTORY:**  
C:\Vault\FTW\Design\CUSTOM STEPS\ESC-18000-18999\ESC-18419.idw

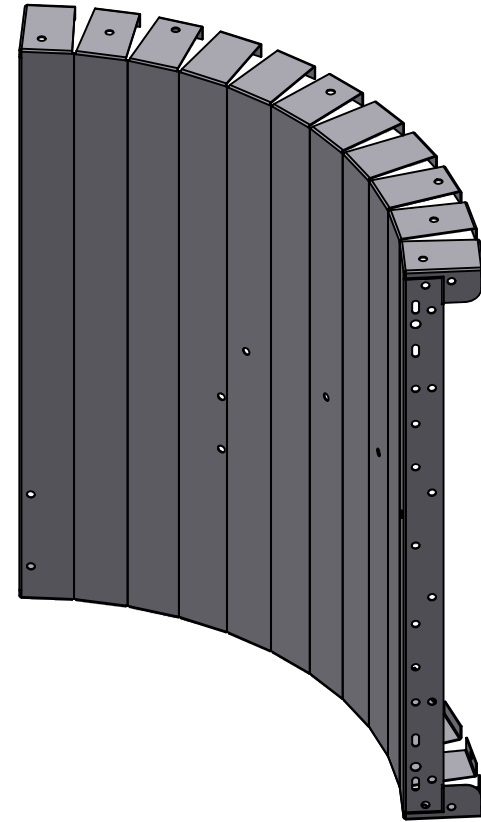
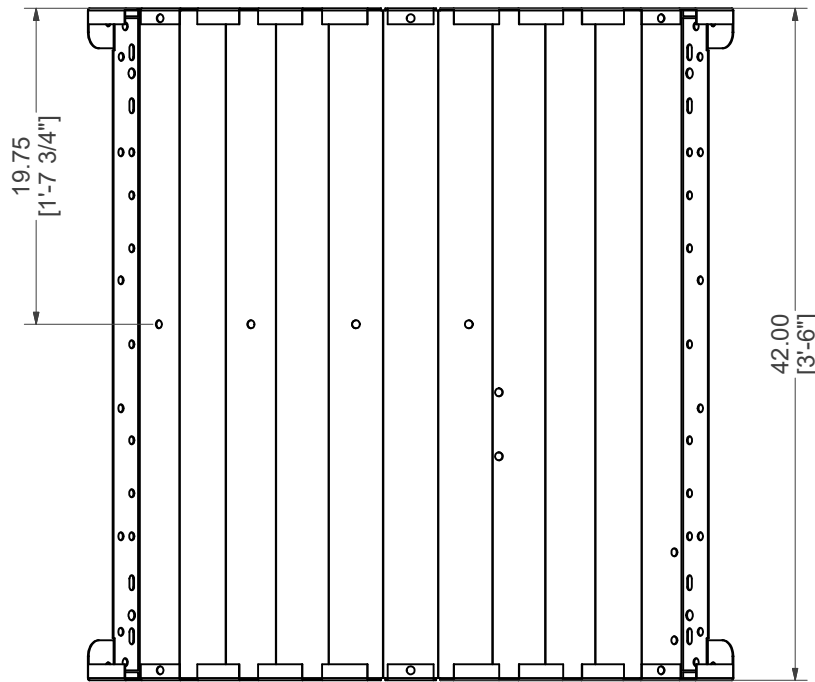
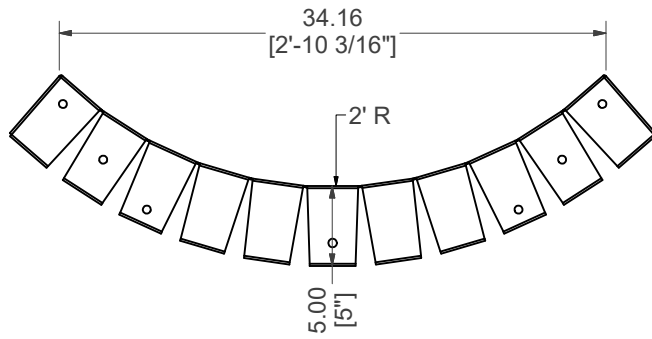


TOLERANCES EXCEPT AS NOTED  
0/0 0.0 0.00 0.000 0'  
±1/8 ±0.25 ±0.0625 ±0.03125 ±1/2'

**MATERIAL:**  
**DRAWN BY:** VD


**DATE:** 3/29/2024  
**SHEET:** 4 OF 20

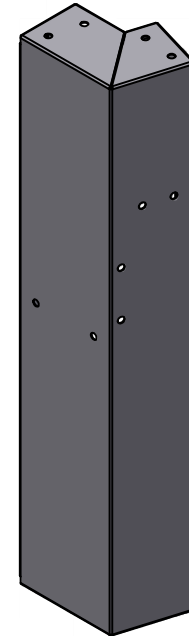
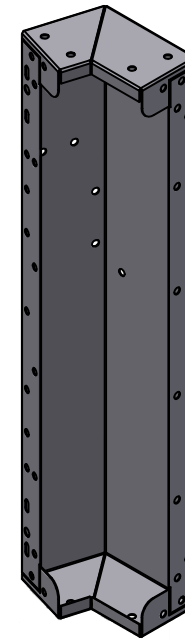
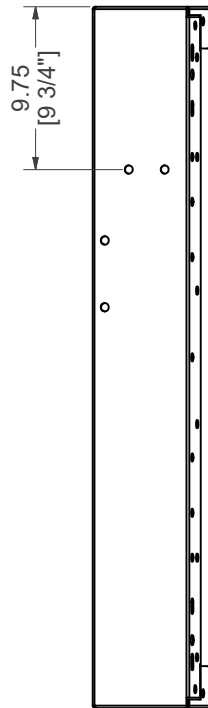
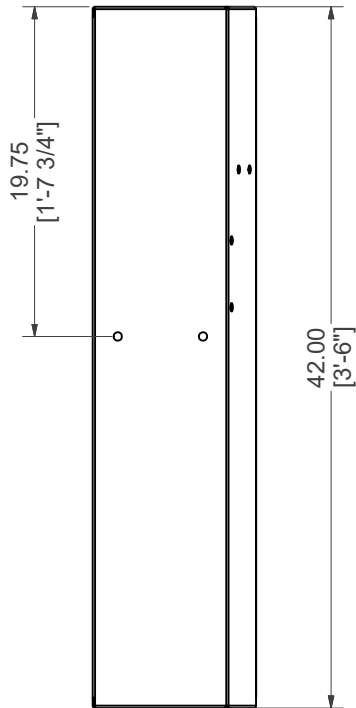
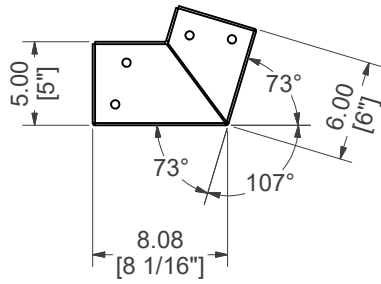
**NOTES:**  
WELDCODE #9  
LOCATE 37" FROM  
LEADING EDGE



**NOTE:**  
RIGHT SIDE PART IS SYMMETRICAL TO LEFT SIDE PART SHOWN.


## RADIUS, FRONT WALL, LEFT

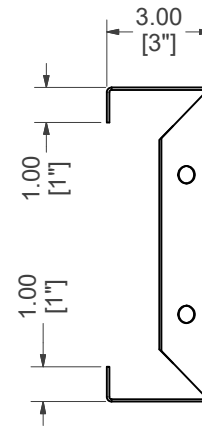
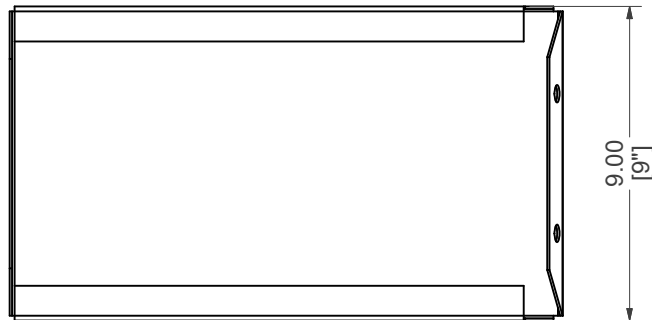
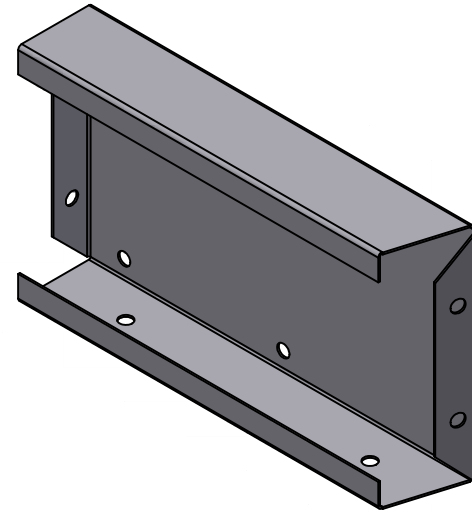
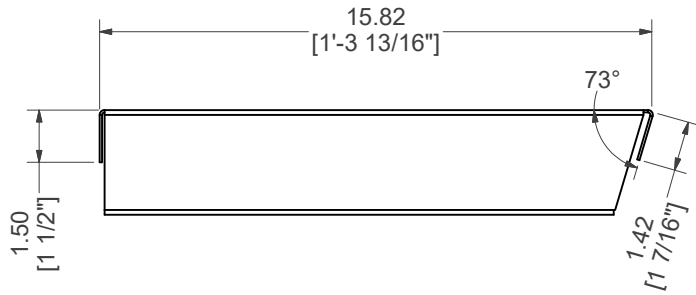
<b>PART #:</b> ESC-18419-FWL	<b>WEIGHT:</b> 44.13 lbmass	<b>MACHINE TIME:</b> N/A	<b>FILE/DIRECTORY:</b> C:\Vault\FTW\Design\CUSTOM STEPS\ESC-18000-18999\ESC-18419.idw
	TOLERANCES EXCEPT AS NOTED	<b>MATERIAL:</b> 14 GA. GALVANIZED	<b>DATE:</b> 3/29/2024
	0/0 0.0 0.00 0.000 0'	<b>DRAWN BY:</b> VD	<b>SHEET:</b> 5 OF 20
	±1/8 ±0.25 ±0.0625 ±0.03125 ±1/2'		<b>NOTES:</b>



**NOTE:**  
RIGHT SIDE PART IS SYMMETRICAL TO LEFT SIDE PART SHOWN.


## STR REV, WALL, LEFT

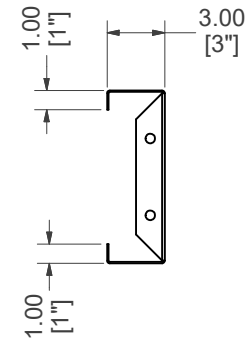
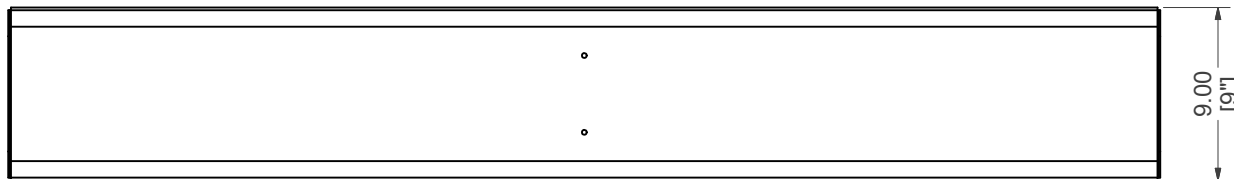
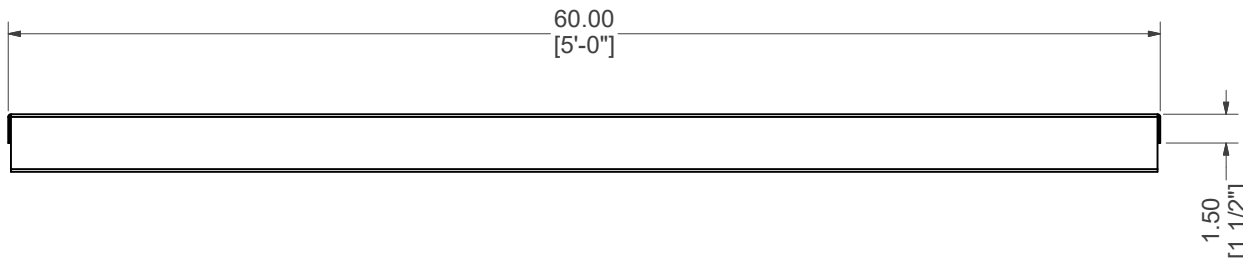
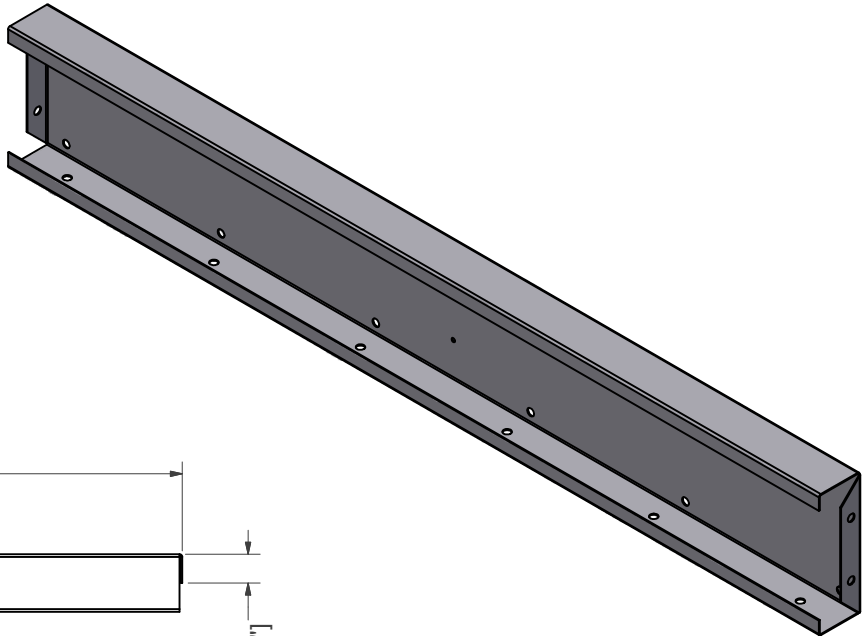
<b>PART #:</b> ESC-18419-SRWL	<b>WEIGHT:</b> 17.03 lbmass	<b>MACHINE TIME:</b> N/A	<b>FILE/DIRECTORY:</b> C:\Vault\FTWDesign\CUSTOM STEPS\ESC-18000-18999\ESC-18419.idw	
	<b>TOLERANCES EXCEPT AS NOTED</b> 0/0 0.0 0.00 0.000 0' ±1/8 ±0.25 ±0.0625 ±0.03125 ±1/2'	<b>MATERIAL:</b> 14 GA. GALVANIZED	<b>DATE :</b> 3/29/2024	<b>NOTES:</b>
		<b>DRAWN BY:</b> VD	<b>SHEET :</b> 6 OF 20	




**NOTE:**  
RIGHT SIDE PART IS SYMMETRICAL TO LEFT SIDE PART SHOWN.

## STRAIGHT, TOP RISER, LEFT

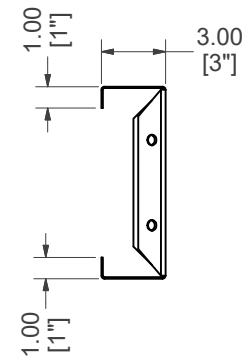
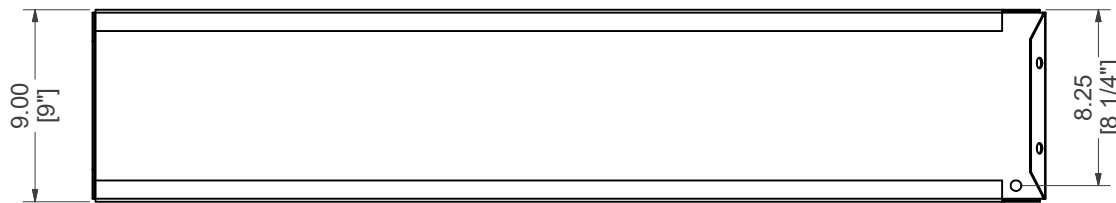
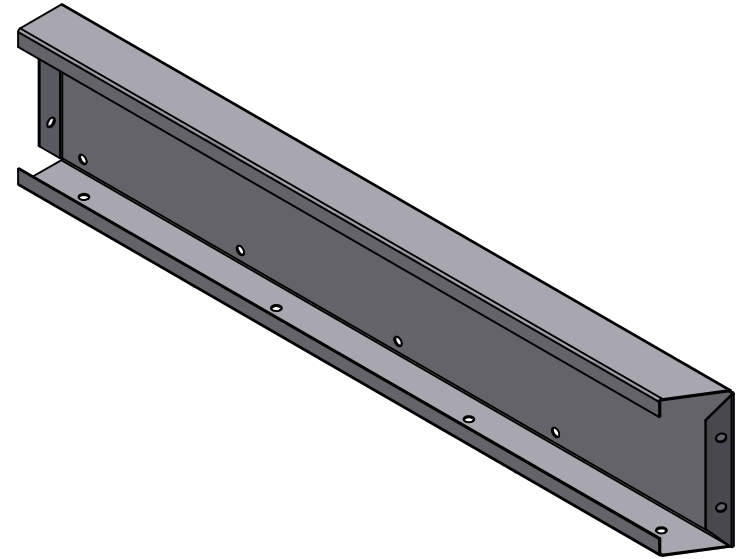
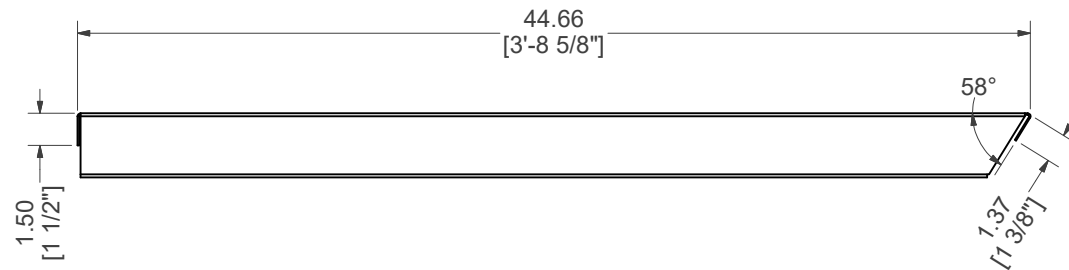
<b>PART #:</b> ESC-18419-TRL	<b>WEIGHT:</b> 5.56 lbmass	<b>MACHINE TIME:</b> N/A	<b>FILE/DIRECTORY:</b> C:\Vault\FTW\Design\CUSTOM STEPS\ESC-18000-18999\ESC-18419.idw	
	TOLERANCES EXCEPT AS NOTED 0/0 0.0 0.00 0.000 0' ±1/8 ±0.25 ±0.0625 ±0.03125 ±1/2'	<b>MATERIAL:</b> 14 GA. GALVANIZED	<b>DATE :</b> 3/29/2024	<b>NOTES:</b>
		<b>DRAWN BY:</b> VD	<b>SHEET :</b> 7 OF 20	



# STRAIGHT, MIDDLE RISER


<b>PART #:</b> ESC-18419-MR	<b>WEIGHT:</b> 20.47 lbmass	<b>MACHINE TIME:</b> N/A	<b>FILE/DIRECTORY:</b> C:\Vault\FTW\Design\CUSTOM STEPS\ESC-18000-18999\ESC-18419.idw	
	TOLERANCES EXCEPT AS NOTED 0/0 0.0 0.00 0.000 0' ±1/8 ±0.25 ±0.0625 ±0.03125 ±1/2'	<b>MATERIAL:</b> 14 GA. GALVANIZED	<b>DATE :</b> 3/29/2024	<b>NOTES:</b>
		<b>DRAWN BY:</b> VD	<b>SHEET :</b> 8 OF 20	

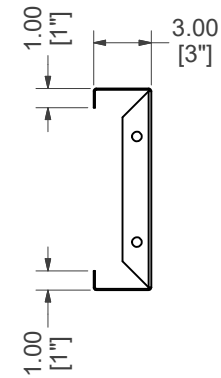
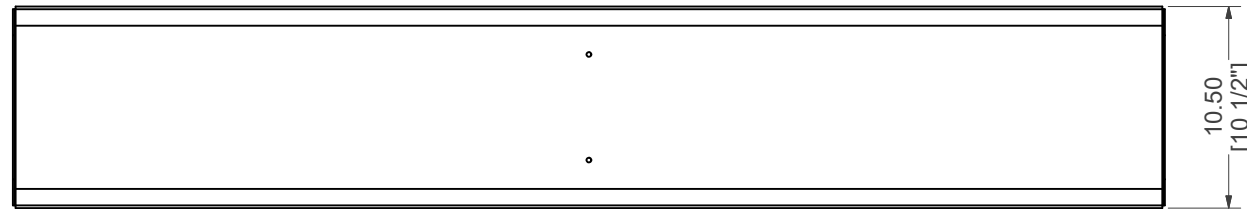
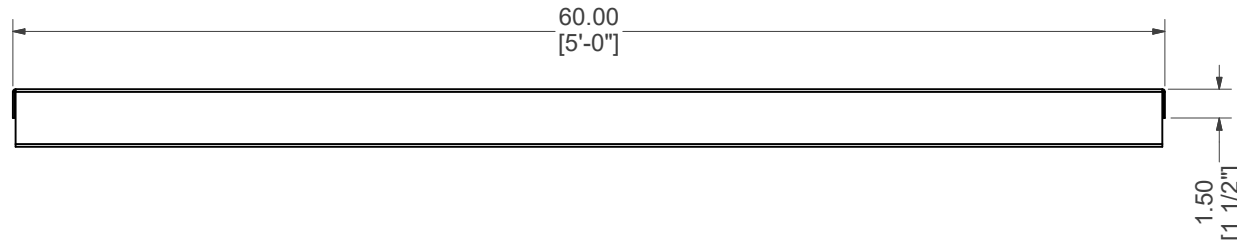
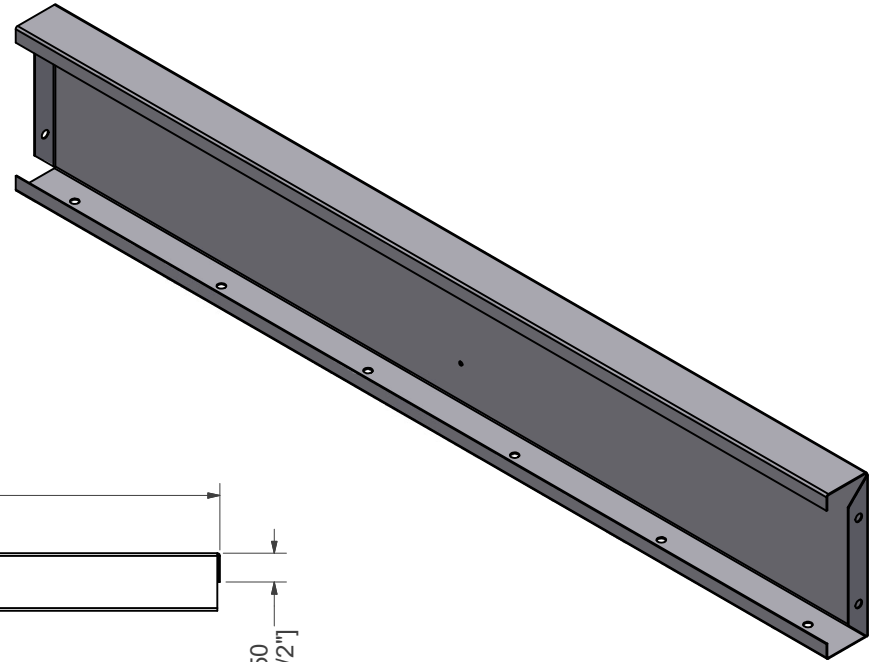





**NOTE:**  
RIGHT SIDE PART IS SYMMETRICAL TO LEFT SIDE PART SHOWN.

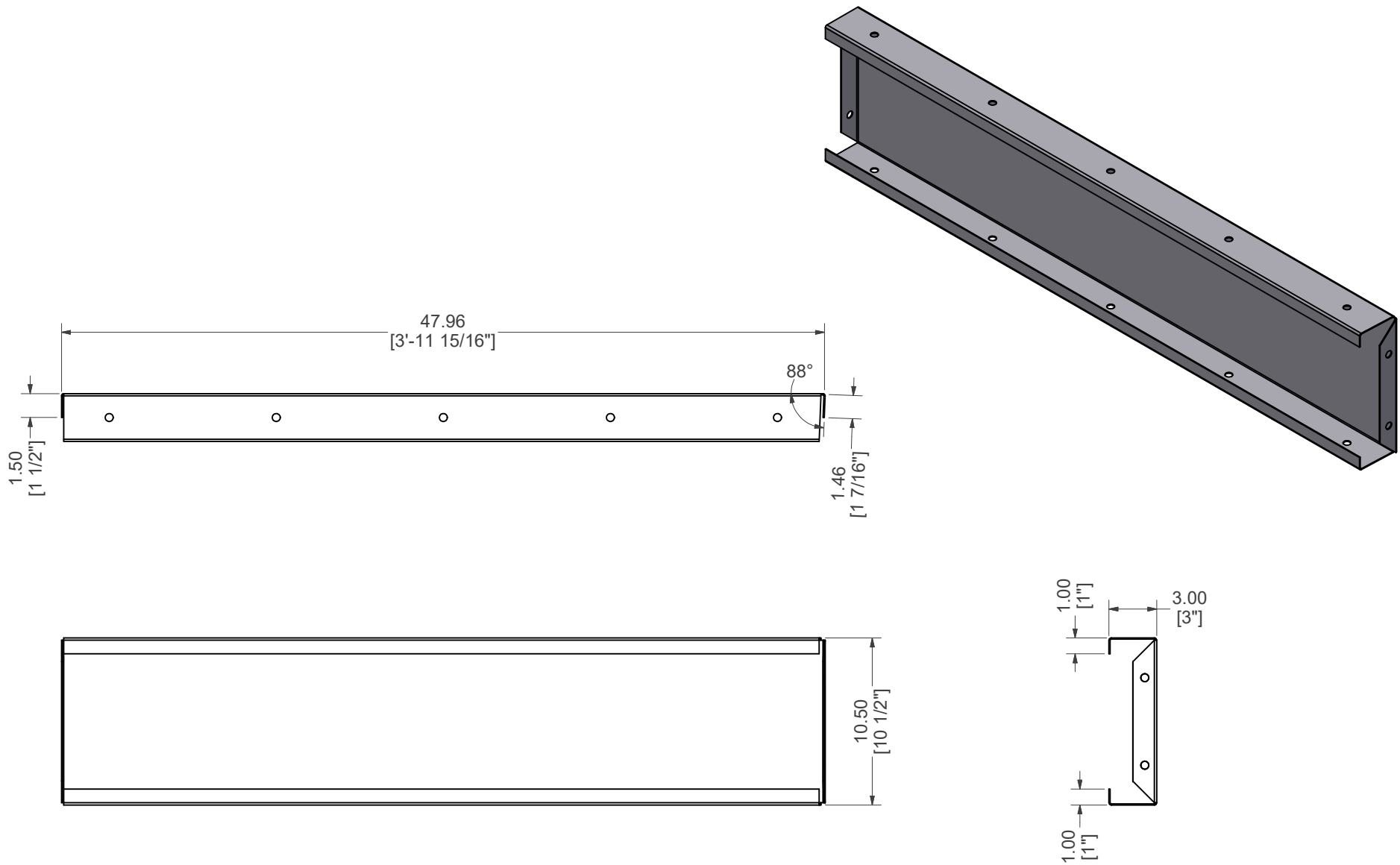
## STRAIGHT, MIDDLE RISER, LEFT

<b>PART #:</b> ESC-18419-MRL  	<b>WEIGHT:</b> 15.14 lbmass	<b>MACHINE TIME:</b> N/A	<b>FILE/DIRECTORY:</b> C:\Vault\FTW\Design\CUSTOM STEPS\ESC-18000-18999\ESC-18419.idw
	TOLERANCES EXCEPT AS NOTED 0/0 0.0 0.00 0.000 0' ±1/8 ±0.25 ±0.0625 ±0.03125 ±1/2'	<b>MATERIAL:</b> 14 GA. GALVANIZED	<b>DATE:</b> 3/29/2024
<b>DRAWN BY:</b> VD	<b>SHEET:</b> 9 OF 20		




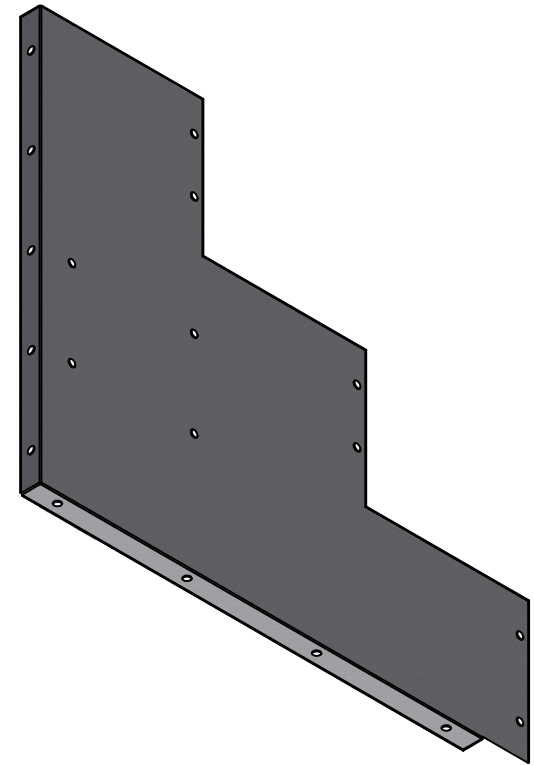
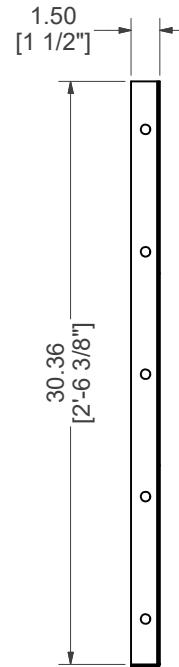
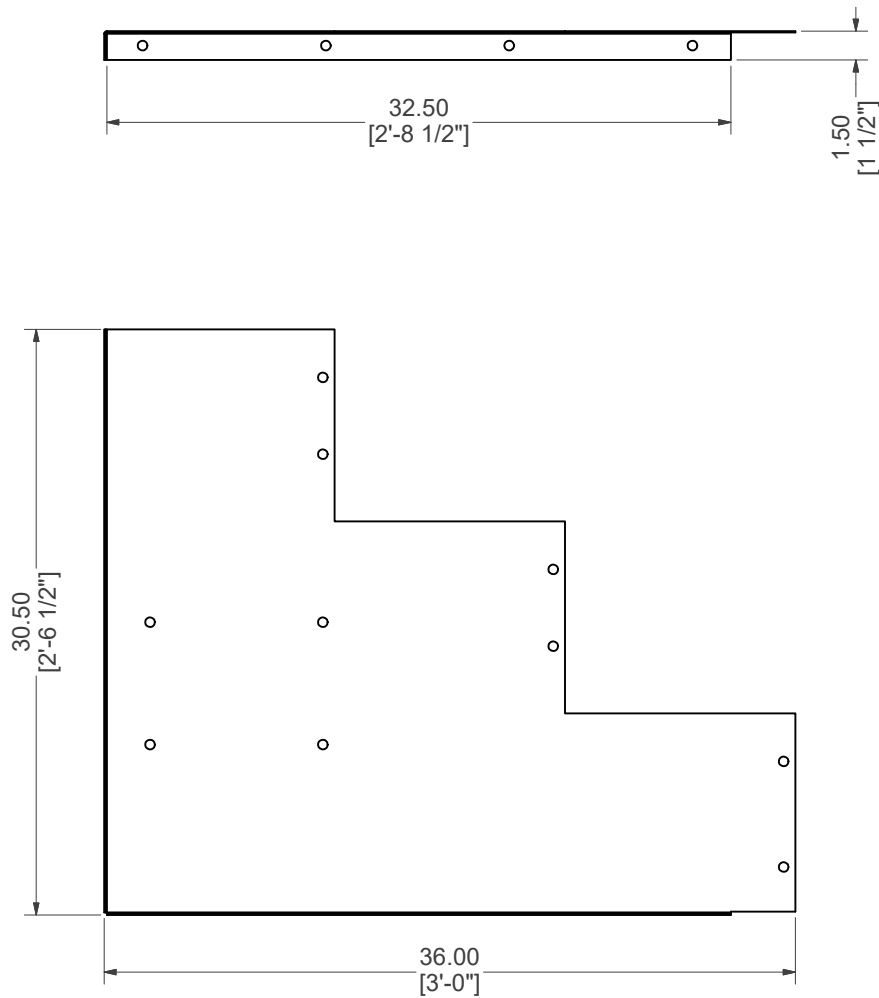
# STRAIGHT, BOTTOM RISER

<b>PART #:</b> ESC-18419-BR	<b>WEIGHT:</b> 22.41 lbmass	<b>MACHINE TIME:</b> N/A	<b>FILE/DIRECTORY:</b> C:\Vault\FTW\Design\CUSTOM STEPS\ESC-18000-18999\ESC-18419.idw
	TOLERANCES EXCEPT AS NOTED 0/0 0.0 0.00 0.000 0' ±1/8 ±0.25 ±0.0625 ±0.03125 ±1/2'	<b>MATERIAL:</b> 14 GA. GALVANIZED  <b>DRAWN BY:</b> VD	<b>DATE:</b> 3/29/2024  <b>SHEET:</b> 10 OF 20  <b>NOTES:</b>




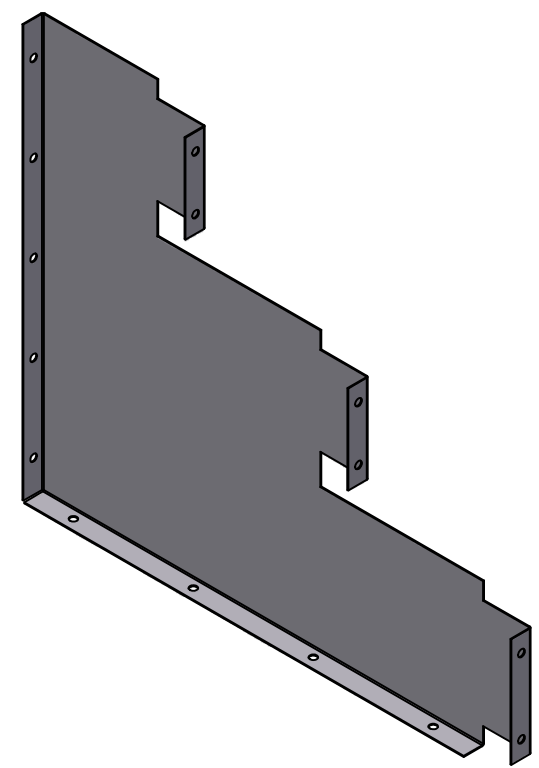
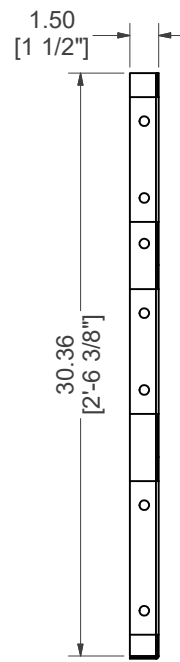
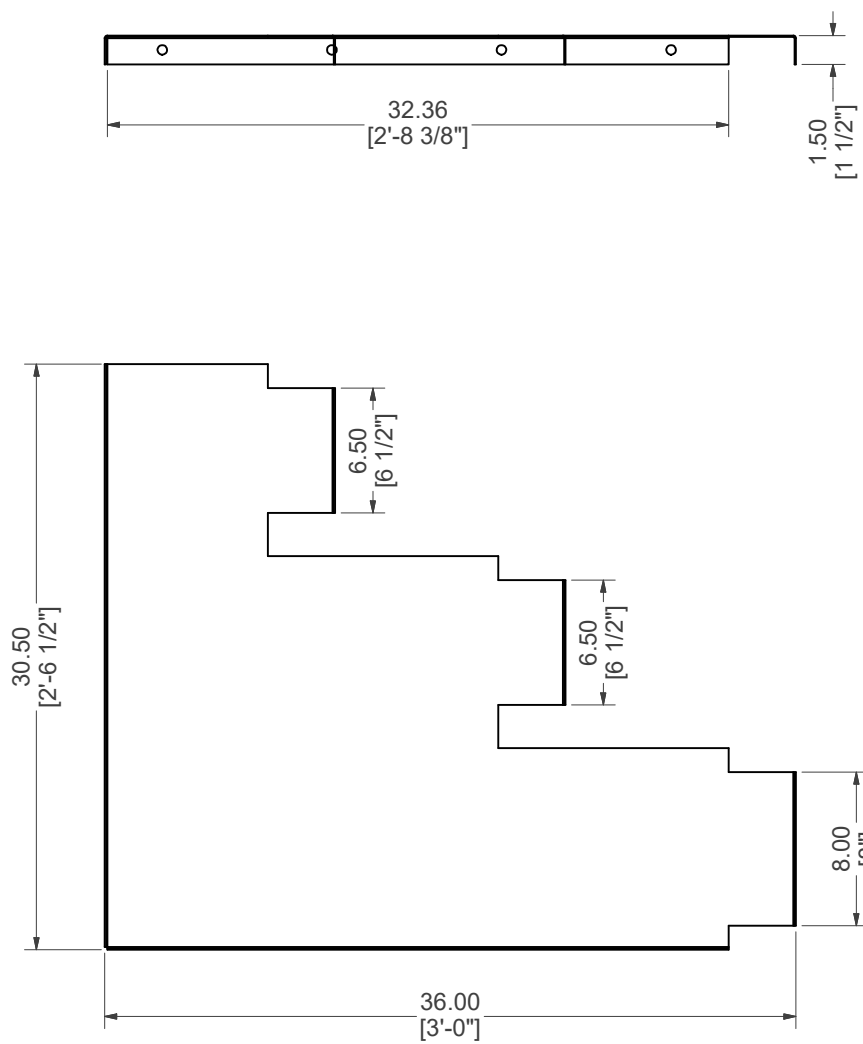
# STRAIGHT, BOTTOM RISER, END

<b>PART #:</b> ESC-18419-BRE	<b>WEIGHT:</b> 17.96 lbmass	<b>MACHINE TIME:</b> N/A	<b>FILE/DIRECTORY:</b> C:\Vault\FTW\Design\CUSTOM STEPS\ESC-18000-18999\ESC-18419.idw
	TOLERANCES EXCEPT AS NOTED 0/0 0.0 0.00 0.000 0' ±1/8 ±0.25 ±0.0625 ±0.03125 ±1/2'	<b>MATERIAL:</b> 14 GA. GALVANIZED  <b>DRAWN BY:</b> VD	<b>DATE:</b> 3/29/2024  <b>SHEET:</b> 11 OF 20
<b>NOTES:</b>			




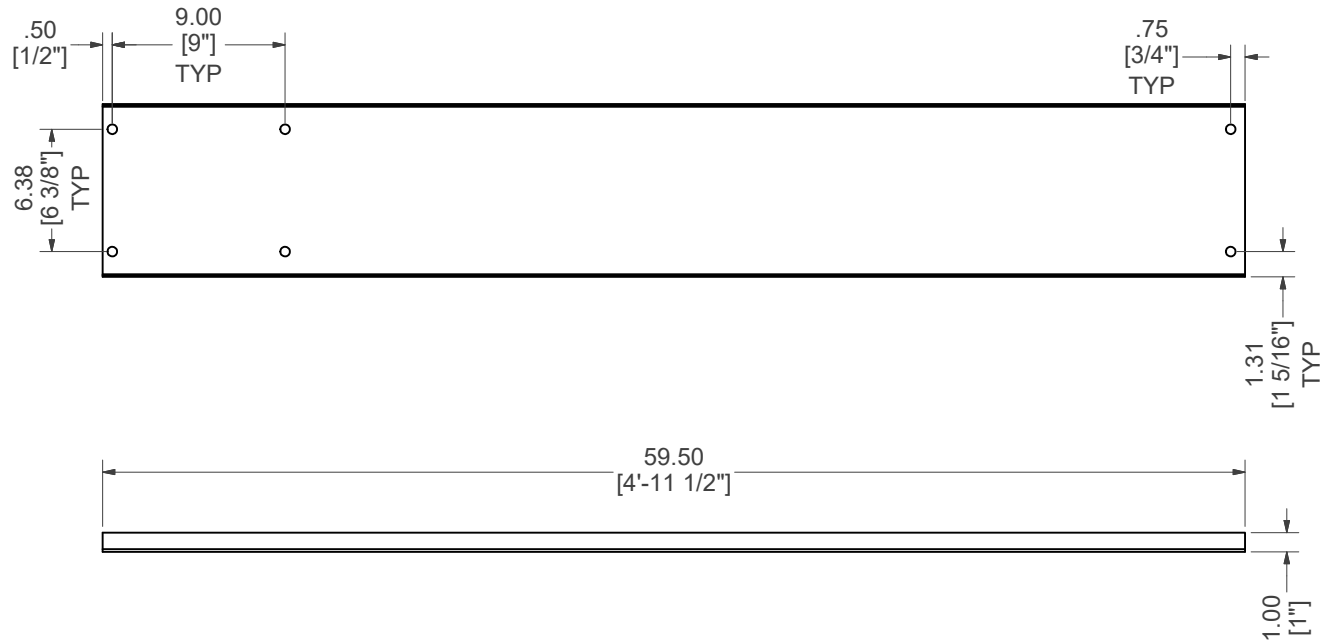
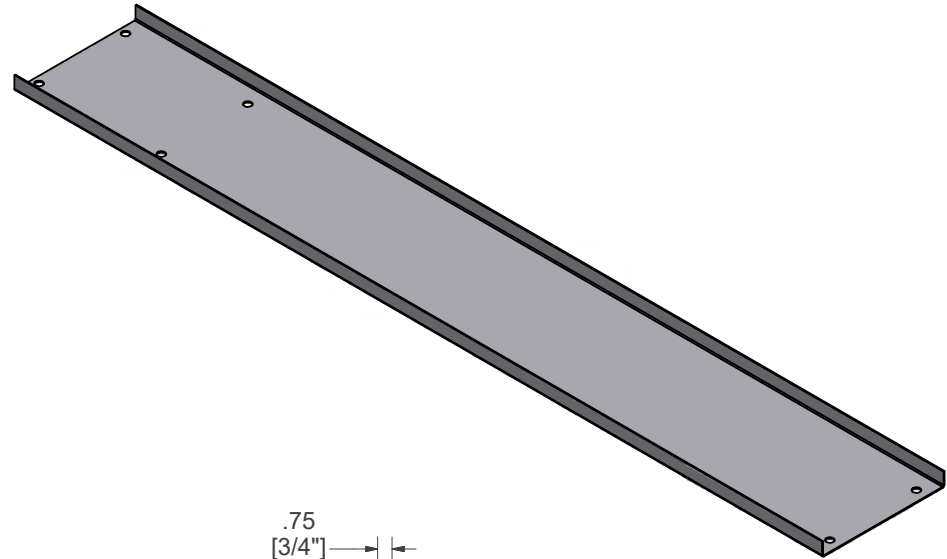
## BRACE, 3-RISER SUPPORT

<b>PART #:</b> ESC-18419-B  	<b>WEIGHT:</b> 16.68 lbmass	<b>MACHINE TIME:</b> N/A	<b>FILE/DIRECTORY:</b> C:\Vault\FTW\Design\CUSTOM STEPS\ESC-18000-18999\ESC-18419.idw
	<b>TOLERANCES EXCEPT AS NOTED</b> 0/0 0.0 0.00 0.000 0' ±1/8 ±0.25 ±0.0625 ±0.03125 ±1/2'	<b>MATERIAL:</b> 14 GA. GALVANIZED	<b>DATE:</b> 3/29/2024
<b>DRAWN BY:</b> VD	<b>SHEET:</b> 12 OF 20		




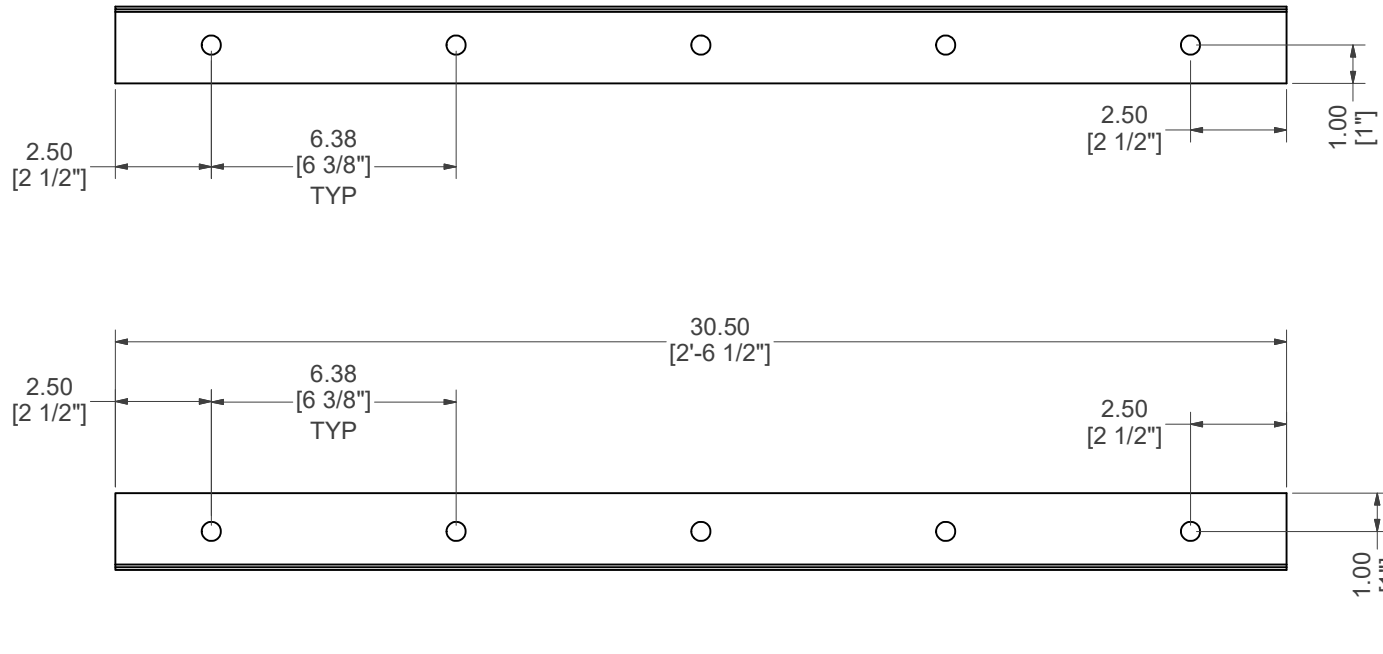
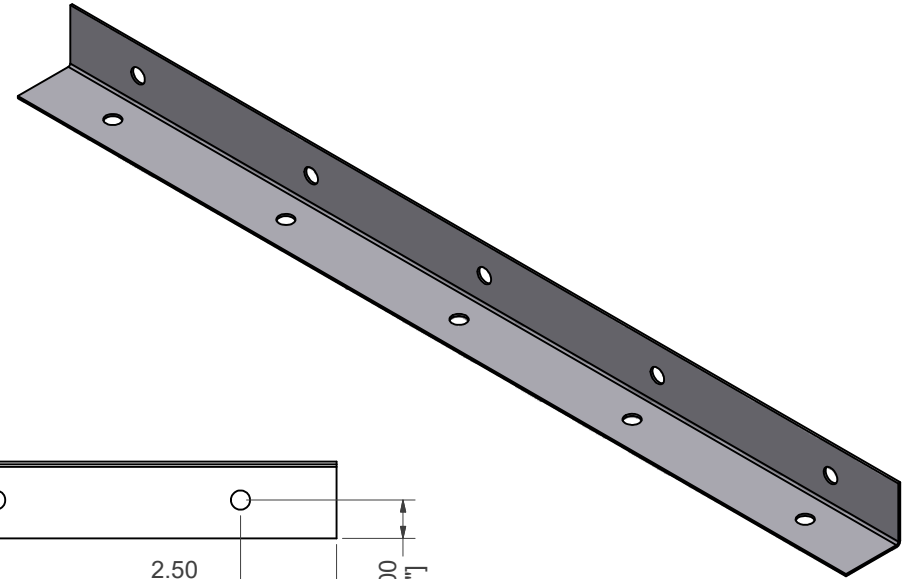
# BRACE, 3-RISER SUPPORT

<b>PART #:</b> ESC-18419-CSB	<b>WEIGHT:</b> 16.61 lbmass	<b>MACHINE TIME:</b> N/A	<b>FILE/DIRECTORY:</b> C:\Vault\FTW\Design\CUSTOM STEPS\ESC-18000-18999\ESC-18419.idw	
	TOLERANCES EXCEPT AS NOTED 0/0 0.0 0.00 0.000 0' ±1/8 ±0.25 ±0.0625 ±0.03125 ±1/2'	<b>MATERIAL:</b> 14 GA. GALVANIZED	<b>DATE:</b> 3/29/2024	<b>NOTES:</b>
		<b>DRAWN BY:</b> VD	<b>SHEET:</b> 13 OF 20	




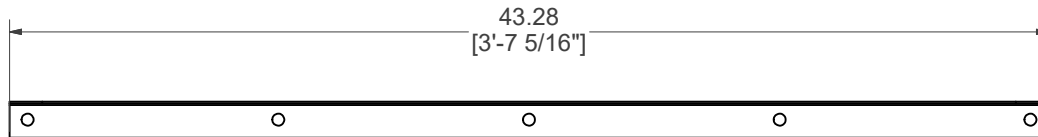
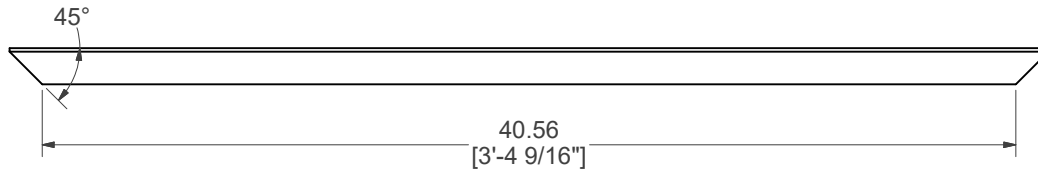
# BRACE, CENTER SUPPORT

<b>PART #:</b> ESC-18419-CB	<b>WEIGHT:</b> 13.00 lbmass	<b>MACHINE TIME:</b> N/A	<b>FILE/DIRECTORY:</b> C:\Vault\FTW\Design\CUSTOM STEPS\ESC-18000-18999\ESC-18419.idw
	TOLERANCES EXCEPT AS NOTED 0/0 0.0 0.00 0.000 0' ±1/8 ±0.25 ±0.0625 ±0.03125 ±1/2'	<b>MATERIAL:</b> 14 GA. GALVANIZED  <b>DRAWN BY:</b> VD	<b>DATE:</b> 3/29/2024  <b>SHEET:</b> 14 OF 20  <b>NOTES:</b>

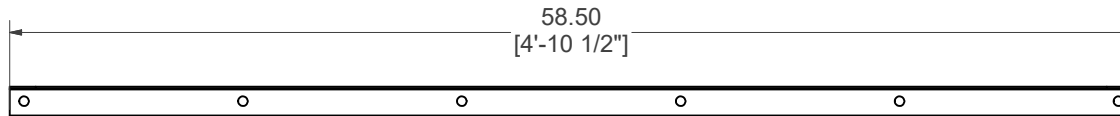
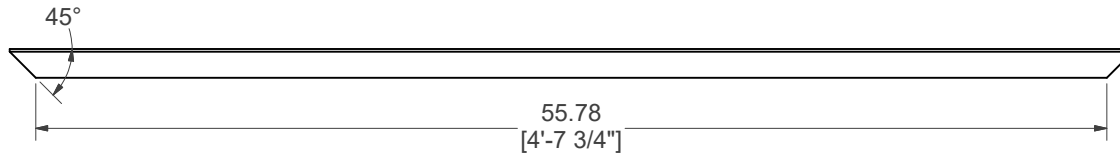
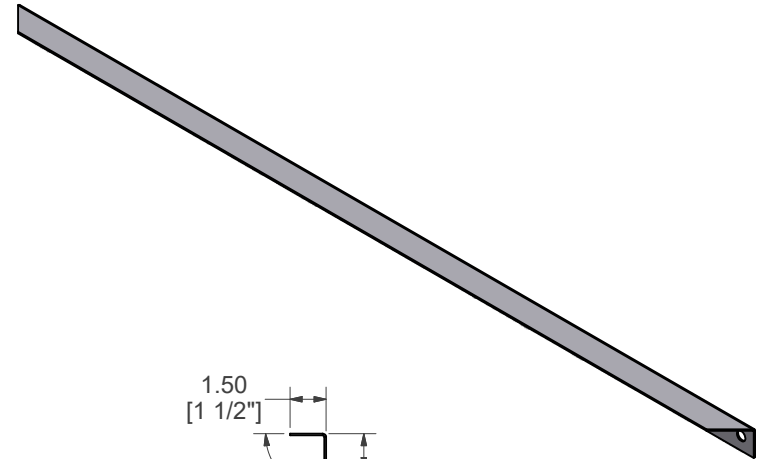
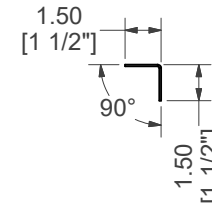


# BRACE, 90° L BRACKET

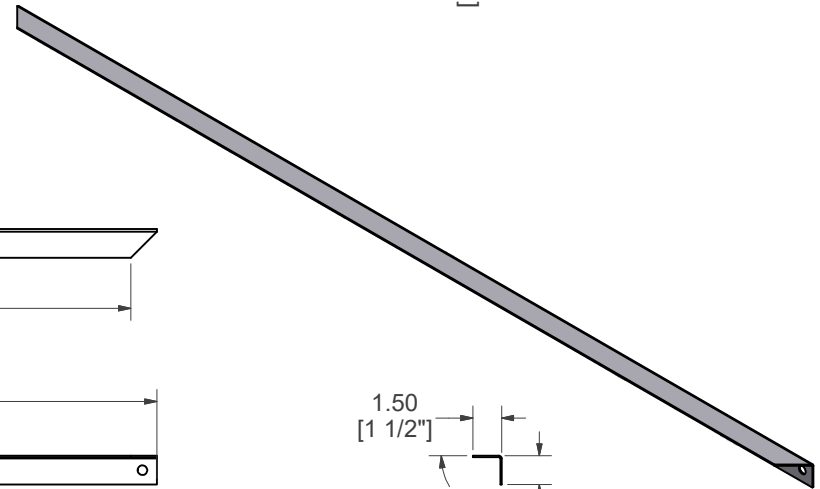
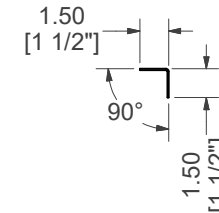
<b>PART #:</b> ESC-18419-BB	<b>WEIGHT:</b> 2.37 lbmass	<b>MACHINE TIME:</b> N/A	<b>FILE/DIRECTORY:</b> C:\Vault\FTW\Design\CUSTOM STEPS\ESC-18000-18999\ESC-18419.idw
	TOLERANCES EXCEPT AS NOTED	<b>MATERIAL:</b> 14 GA. GALVANIZED	<b>DATE:</b> 3/29/2024
	0/0 0.0 0.00 0.000 0'	<b>DRAWN BY:</b> VD	<b>SHEET:</b> 15 OF 20
	±1/8 ±0.25 ±0.0625 ±0.03125 ±1/2'		<b>NOTES:</b>




**ESC-18419-LV**



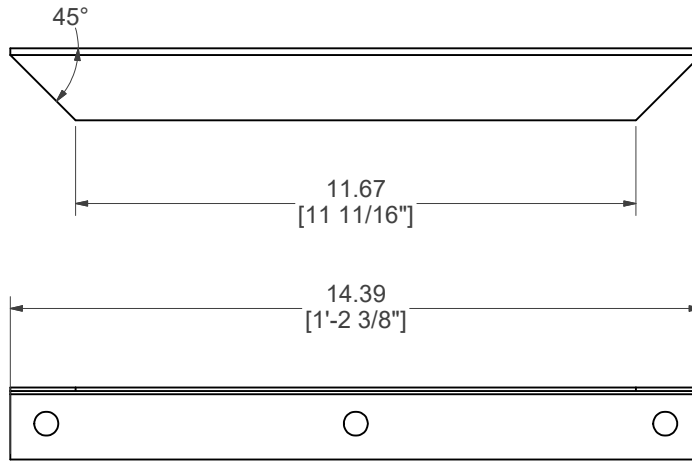
**ESC-18419-LV1**



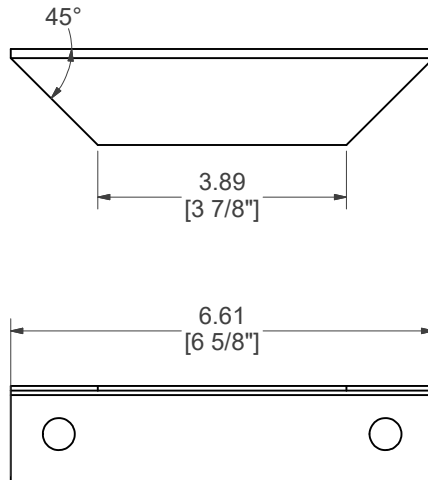
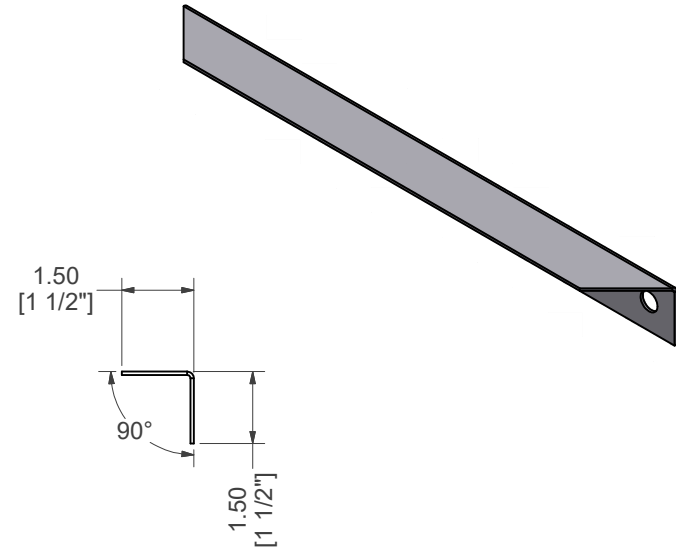
# STRAIGHT, LEVELER

<b>PART #:</b> ESC-18419-LV	<b>WEIGHT:</b> 2.48 lbmass	<b>MACHINE TIME:</b> N/A	<b>FILE/DIRECTORY:</b> C:\Vault\FTW\Design\CUSTOM STEPS\ESC-18000-18999\ESC-18419.idw	
	<b>TOLERANCES EXCEPT AS NOTED</b> 0/0 0.0 0.00 0.000 0' ±1/8 ±0.25 ±0.0625 ±0.03125 ±1/2'	<b>MATERIAL:</b> 14 GA. GALVANIZED	<b>DATE:</b> 3/29/2024	<b>NOTES:</b>
		<b>DRAWN BY:</b> VD	<b>SHEET:</b> 16 OF 20	

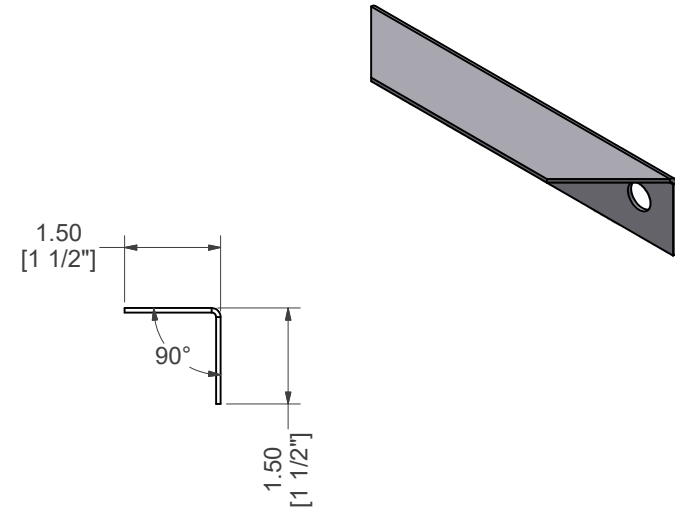





**ESC-18419-LV2**

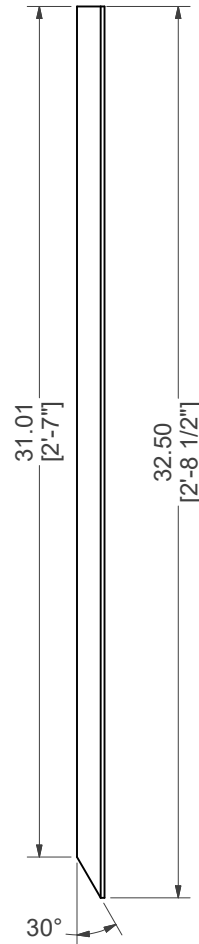
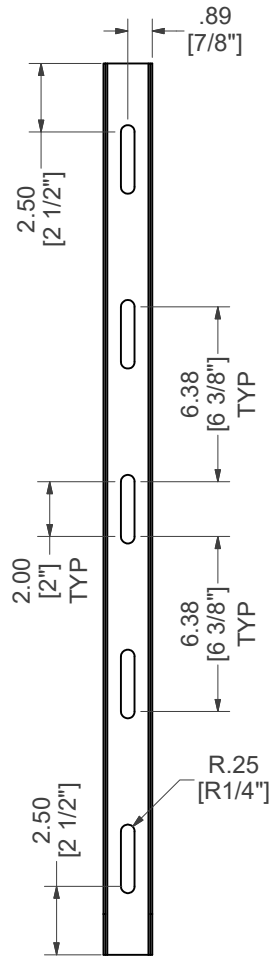
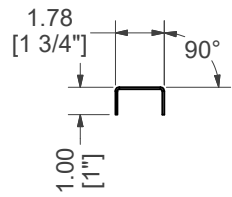


**ESC-18419-LV3**




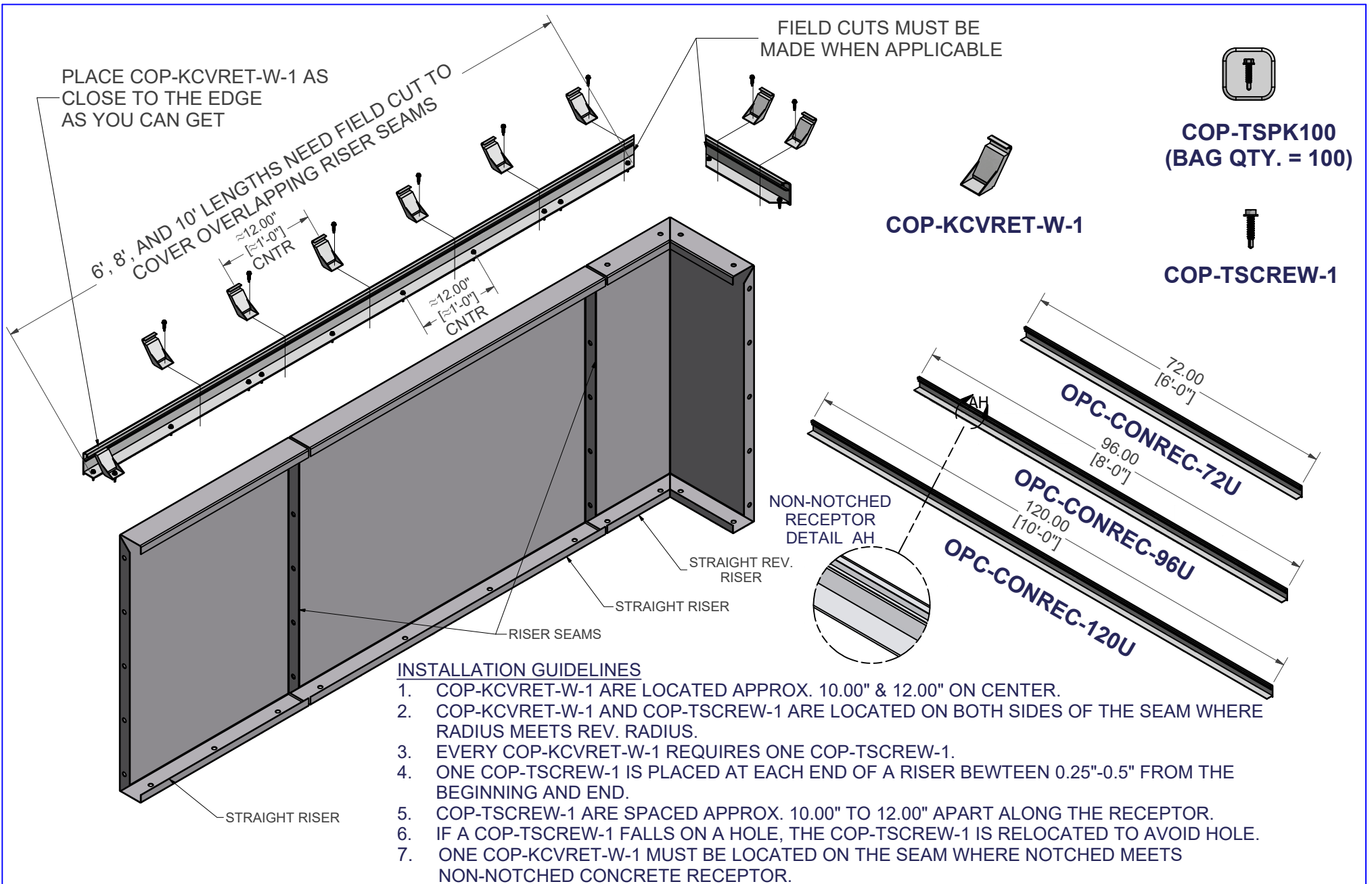
**STRAIGHT, LEVELER2**

<b>PART #:</b> ESC-18419-LV2	<b>WEIGHT:</b> 0.79 lbmass	<b>MACHINE TIME:</b> N/A	<b>FILE/DIRECTORY:</b> C:\Vault\FTW\Design\CUSTOM STEPS\ESC-18000-18999\ESC-18419.idw	
	<b>TOLERANCES EXCEPT AS NOTED</b> 0/0 0.0 0.00 0.000 0' ±1/8 ±0.25 ±0.0625 ±0.03125 ±1/2'	<b>MATERIAL:</b> 14 GA. GALVANIZED	<b>DATE :</b> 3/29/2024	<b>NOTES:</b>
		<b>DRAWN BY:</b> VD	<b>SHEET :</b> 17 OF 20	



# BRACE, DRIVE STAKE CHANNEL SET

<b>PART #:</b> ESC-18419-DS  	<b>WEIGHT:</b> 2.20 lbmass	<b>MACHINE TIME:</b> N/A	<b>FILE/DIRECTORY:</b> C:\Vault\FTW\Design\CUSTOM STEPS\ESC-18000-18999\ESC-18419.idw
	TOLERANCES EXCEPT AS NOTED 0/0 0.0 0.00 0.000 0' ±1/8 ±0.25 ±0.0625 ±0.03125 ±1/2'	<b>MATERIAL:</b> 14 GA. GALVANIZED	<b>DATE :</b> 3/29/2024
<b>DRAWN BY:</b> VD	<b>SHEET :</b> 18 OF 20		



# NON-NOTCHED CONCRETE RECEPTOR FIELD INSTALLATION

<b>PARTS #</b> <b>STRAIGHT CONCRETE RECEPTOR</b>	<b>WEIGHT:</b> 77.51 lbmass	<b>MACHINE TIME:</b> N/A	<b>FILE/DIRECTORY:</b> C:\Vault\FTW\Design\CUSTOM STEPS\ESC-18000-18999\ESC-18419.idw
	<b>TOLERANCES EXCEPT AS NOTED</b> 0/0 0.0 0.00 0.000 0' ±1/8 ±0.25 ±0.0625 ±0.03125 ±1/2"	<b>MATERIAL:</b>  <b>DRAWN BY:</b> VD	<b>DATE:</b> 3/29/2024 <b>SHEET:</b> 19 OF 20



PLACE COP-KCVRET-W-1 AT SEAMS WHERE STRAIGHT MEETS A RADIUS/REV. RADIUS.

PLACE COP-TSCREW-1 ON BOTH SIDES OF THE SEAMS.

PLACE COP-KCVRET-W-1 AS CLOSE TO THE END EDGE AS YOU CAN GET.

FIELD CUTS MUST BE MADE WHEN APPLICABLE

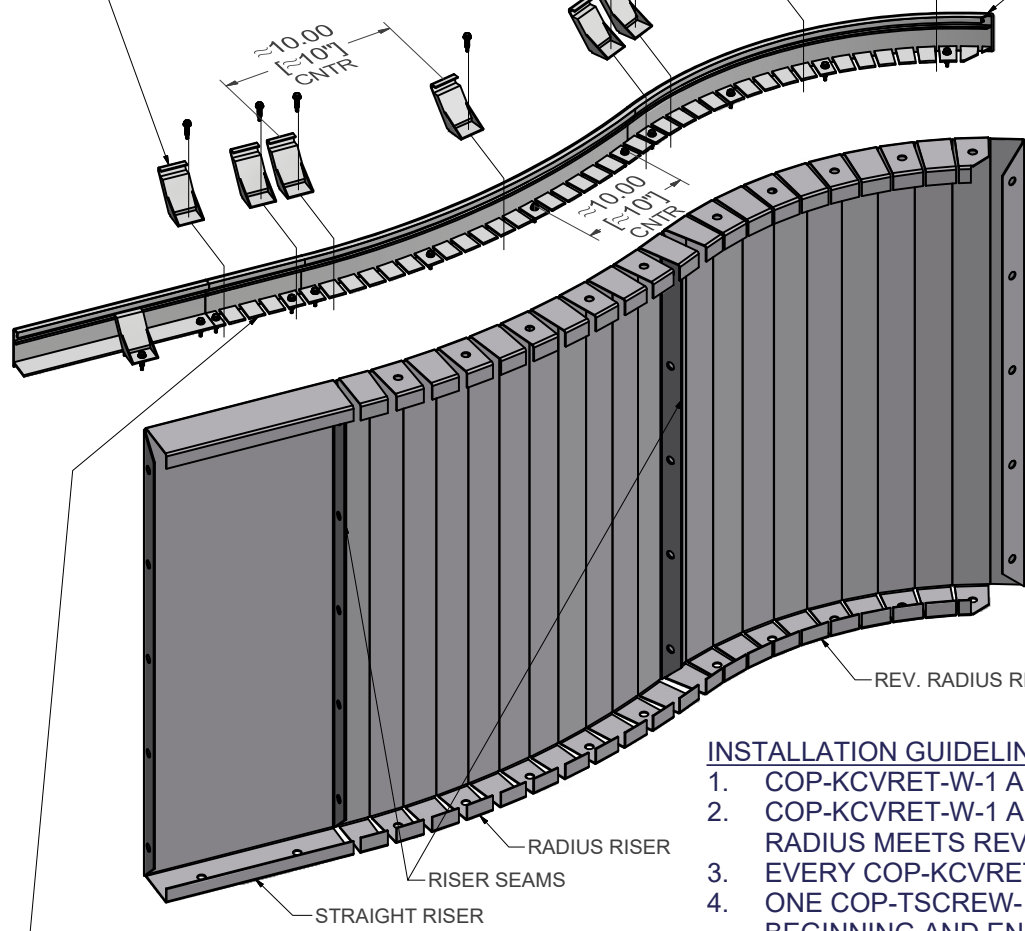


**COP-TSPK100**  
(BAG QTY. = 100)

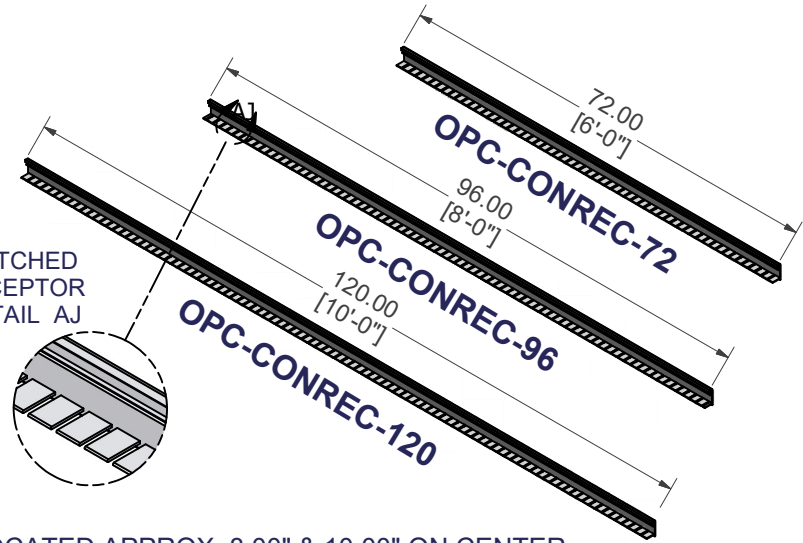
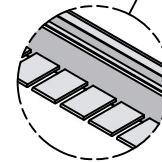


**COP-TSCREW-1**

**COP-KCVRET-W-1**



NOTCHED RECEPTOR DETAIL AJ



ALLOW AN APPROX. OF 6.00" OF OVERLAP GOING FROM RADIUS/ REV. RADIUS TO A STRAIGHT RISER.

**INSTALLATION GUIDELINES**

1. COP-KCVRET-W-1 ARE LOCATED APPROX. 8.00" & 10.00" ON CENTER.
2. COP-KCVRET-W-1 AND COP-TSCREW-1 ARE LOCATED ON BOTH SIDES OF THE SEAM WHERE RADIUS MEETS REV. RADIUS.
3. EVERY COP-KCVRET-W-1 REQUIRES ONE COP-TSCREW-1.
4. ONE COP-TSCREW-1 IS PLACED AT EACH END OF A RISER BEWTEEN 0.25"-0.5" FROM THE BEGINNING AND END.
5. COP-TSCREW-1 ARE SPACED APPROX. 8.00" TO 10.00" APART ALONG THE RECEPTOR.
6. IF A COP-TSCREW-1 FALLS ON A HOLE, THE COP-TSCREW-1 IS RELOCATED TO AVOID HOLE.
7. ONE COP-KCVRET-W-1 MUST BE LOCATED ON THE SEAM WHERE NOTCHED MEETS NON-NOTCHED CONCRETE RECEPTOR.

# NOTCHED CONCRETE RECEPTOR FIELD INSTALLATION

**REV-RADIUS CONCRETE RECEPTOR**

**WEIGHT:**  
52.49 lbmass

**MACHINE TIME:**  
N/A

**FILE/DIRECTORY:**

C:\Vault\FTW\Design\CUSTOM STEPS\ESC-18000-18999\ESC-18419.idw



TOLERANCES EXCEPT AS NOTED  
0/0 0.0 0.00 0.000 0'  
±1/8 ±0.25 ±0.0625 ±0.03125 ±1/2"

**MATERIAL:**

**DATE:** 3/29/2024

**NOTES:**

**DRAWN BY:** VD

**SHEET:** 20 OF 20