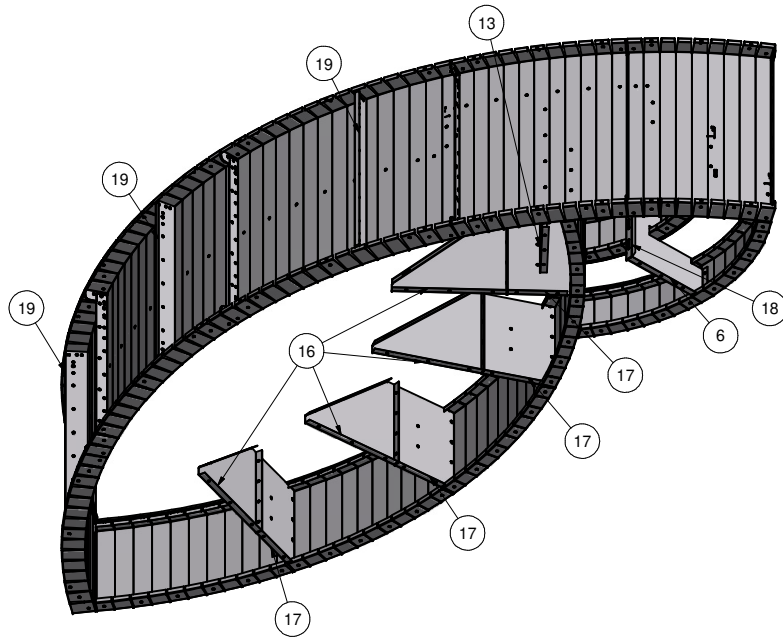
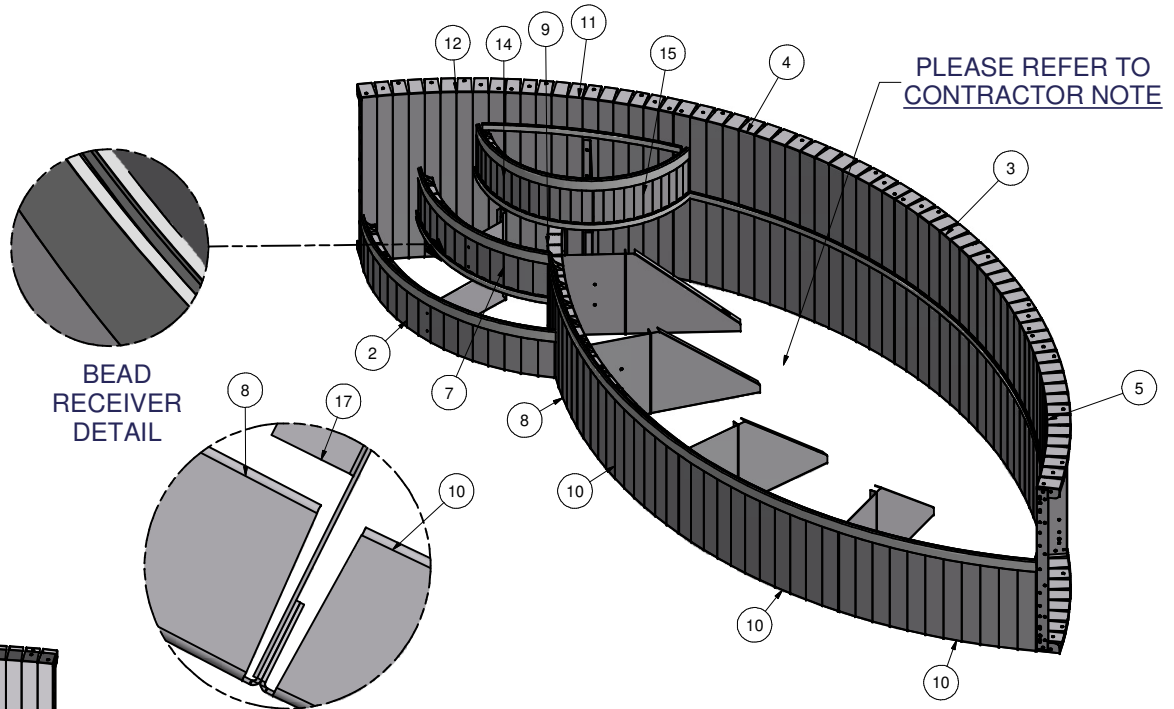


Parts List			
ITEM	QTY	PART NUMBER	DESCRIPTION
1	43	COP-KCVRET-W-1	COP COPING STIFFENER 1 5/8"-1PC
2	1	ESC-18600-BR	REV RAD, BOTTOM RISER
3	1	ESC-18600-BW	RADIUS, BACK WALL
4	1	ESC-18600-BWL	RADIUS, BACK WALL, LEFT
5	1	ESC-18600-BWR	RADIUS, BACK WALL, RIGHT
6	1	ESC-18600-CSB	BRACE, 2 RISER SUPPORT
7	1	ESC-18600-MR	REV RAD, MIDDLE RISER
8	1	ESC-18600-SR	REV RAD, SUNLEDGE RISER
9	1	ESC-18600-SRL	REV RAD, SUNLEDGE RISER, LEFT
10	3	ESC-18600-SRR	REV RAD, SUNLEDGE RISER, RIGHT
11	1	ESC-18600-SWL	RADIUS, SIDE WALL, LEFT
12	1	ESC-18600-SWLE	RADIUS, SIDE WALL, LEFT END
13	1	ESC-18600-TRB	BRACE, TOP RISER SUPPORT
14	1	ESC-18600-TRL	REV RAD, TOP RISER, LEFT
15	1	ESC-18600-TRR	REV RAD, TOP RISER, RIGHT
16	4	ESC-8420-BUB	BRACE, SUNLEDGE RISER ANGLE SUPPORT
17	4	ESC-8874-SRS	BRACE, SUNLEDGE RISER SUPPORT
18	1	ESC-9383-DS	BRACE, DRIVE STAKE CHANNEL SET
19	3	M0065-1	PANEL Z-RIB W/BUTTRESS HOLES
20	29'	OPC-CONREC-XX	NOTCHED CONCRETE RECEPTOR
21	0'	OPC-CONREC-XXU	UN-NOTCHED CONCRETE RECEPTOR
22	27'	SSC-1099-PFT	STEEL STEP PVC BEAD RETAINER (PER FT)



TOP VIEW

BRACE CONNECTED TO INSIDE FLANGE OF THE LEFT RISER

CONTRACTOR MUST FIELD FIT ALL CONCRETE RECEPTOR.

TOTALS REQUIRED FOR THIS CUSTOM PRODUCT APPLICATION.

OPC-CONREC-XX (NOTCHED) = 348" (29')

OPC-CONREC-XXU (UN-NOTCHED) = 0" (0')

COP-KCVRET-W-1 (STIFFENER) = 43

KEEP BEAD RECEIVER ATTACHED TO THE RISERS AND WALL PANELS FOR SHIPPING. A TOTAL OF 324" (27') OF BEAD RECEIVER IS REQUIRED.


CONTRACTOR NOTE:

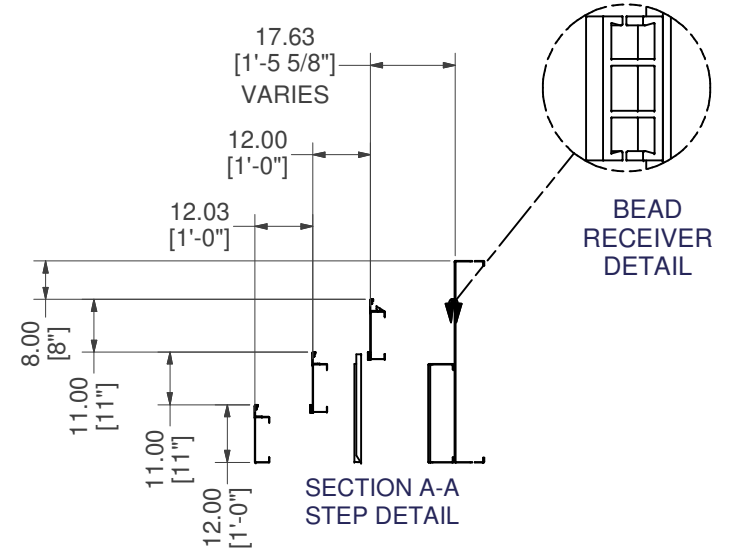
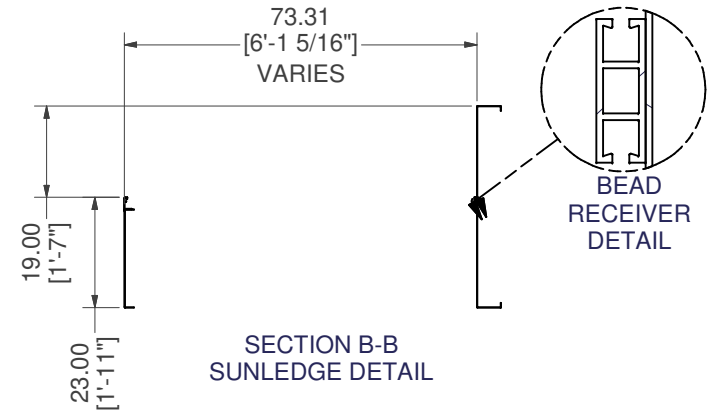
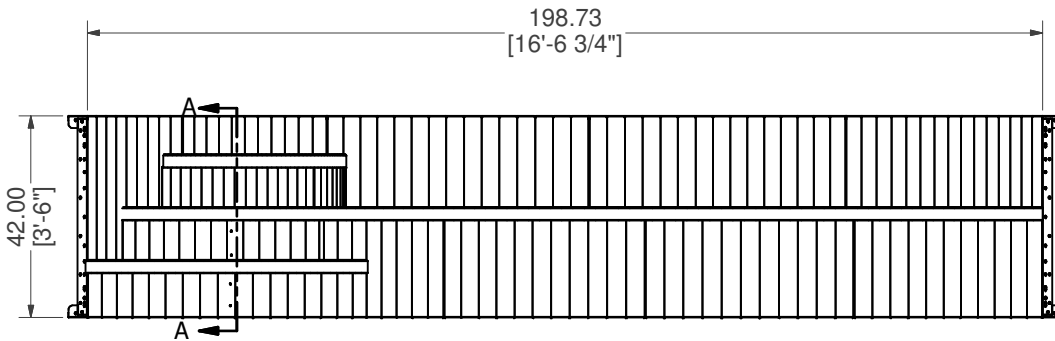
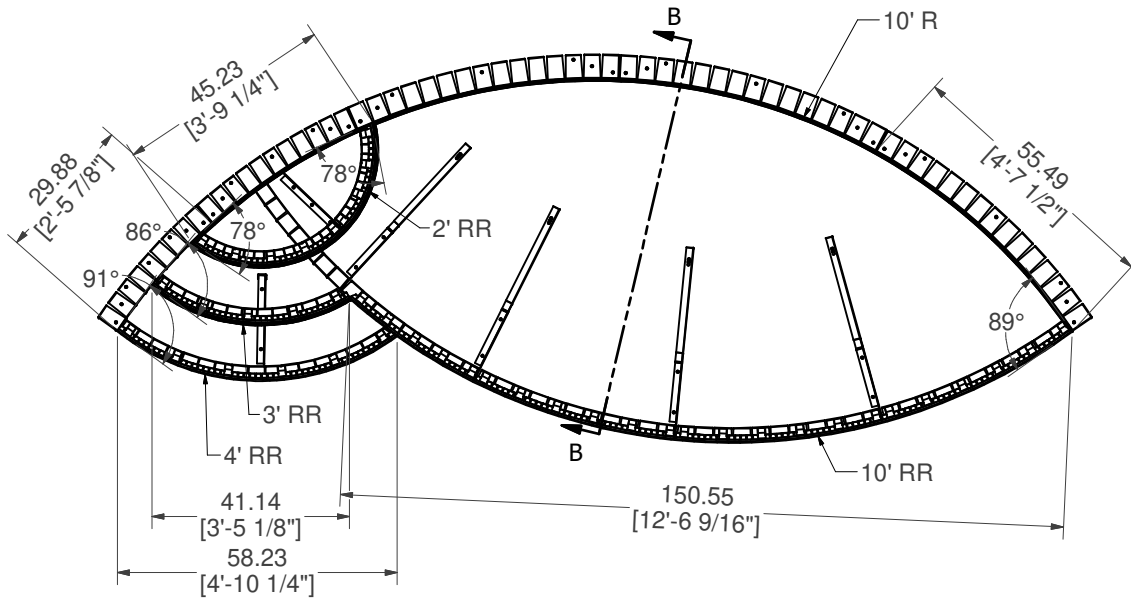
CONTRACTOR IS RESPONSIBLE FOR SECURING ALL RISERS INTO PLACE WITH REBAR HOLES BEFORE BACKFILLING THIS CUSTOM STEP

CONTRACTOR NOTE:


BACK FILL STEP/SUNLEDGE AREA WITH COMPACTED EARTH MATERIAL. FINISH STEP/SUNLEDGE AREA WITH 2" OF HARDEN FLOOR MATERIAL TO MATCH REQUIRED DEPTH (FLUSH WITH TOP OF BEAD RECEIVER).

16'-6 5/8" X 3'-6" X 10'R OPEN TOP STEP W/ SUNLEDGE RIGHT

PART #: ESC-18600 	WEIGHT: 548.37 lbmass	MACHINE TIME: N/A	FILE/DIRECTORY: C:\Vault\FTW\Design\CUSTOM STEPS\ESC-18000-18999\ESC-18600.idw
	TOLERANCES EXCEPT AS NOTED 0/0 0.0 0.00 0.000 0' ±1/8 ±0.25 ±0.0625 ±0.03125 ±1/2"	MATERIAL: DRAWN BY: PK	DATE: 4/30/2024 SHEET: 1 OF 21

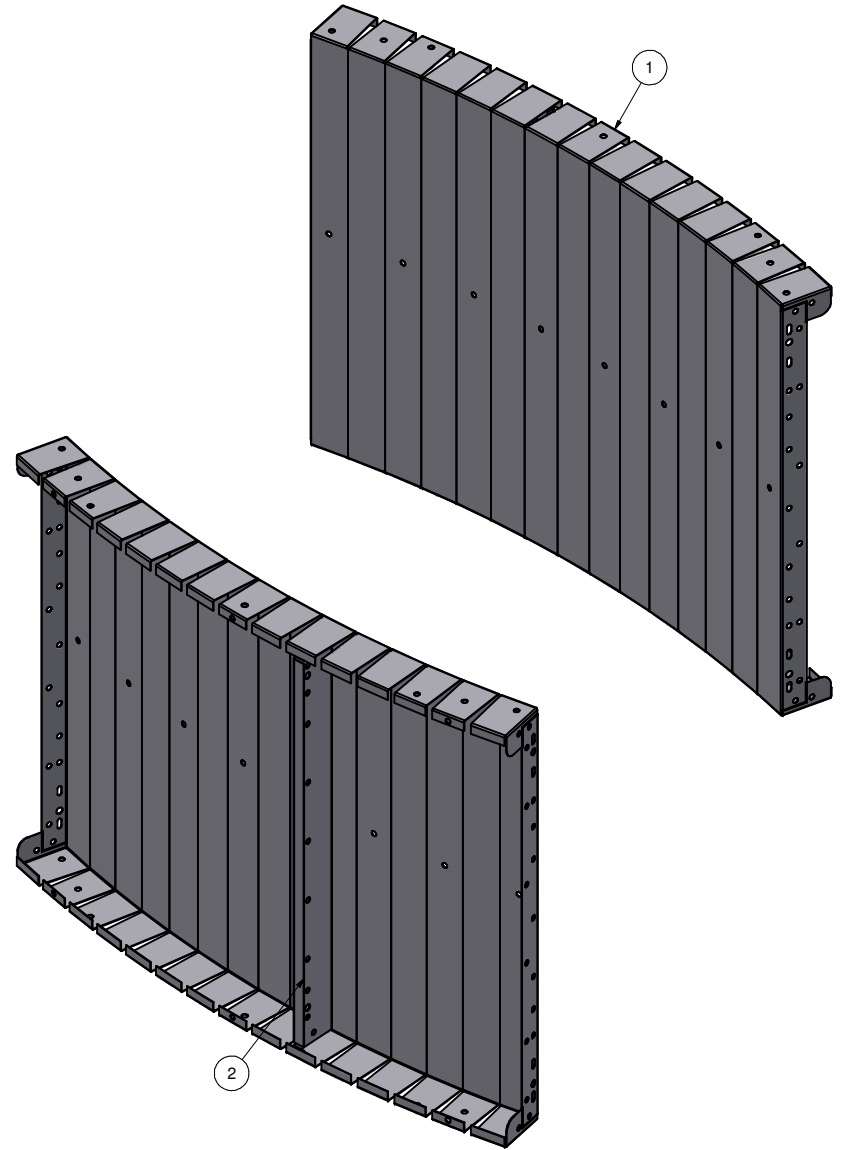
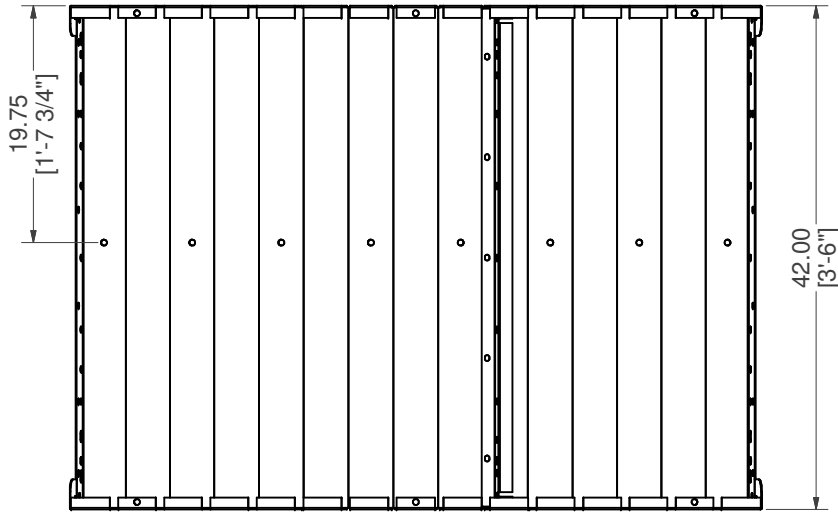
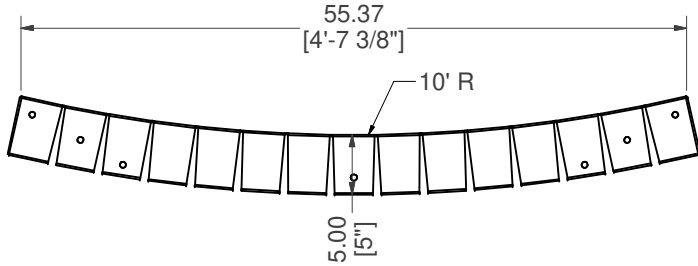


16'-6 5/8" X 3'-6" X 10'R OPEN TOP STEP W/ SUNLEDGE RIGHT


PART #: ESC-18600 	WEIGHT: 548.37 lbmass	MACHINE TIME: N/A	FILE/DIRECTORY: C:\Vault\FTW\Design\CUSTOM STEPS\ESC-18000-18999\ESC-18600.idw
	TOLERANCES EXCEPT AS NOTED 0/0 0.0 0.00 0.000 0' ±1/8 ±0.25 ±0.0625 ±0.03125 ±1/2'	MATERIAL:	DATE: 4/30/2024
DRAWN BY: PK	SHEET: 2 OF 21		

Parts List			
ITEM	QTY	PART NUMBER	DESCRIPTION
1	1	ESC-18600-BW	RADIUS, BACK WALL
2	1	M0065-1	PANEL Z-RIB W/BUTTRESS HOLES

WELDCODE #4

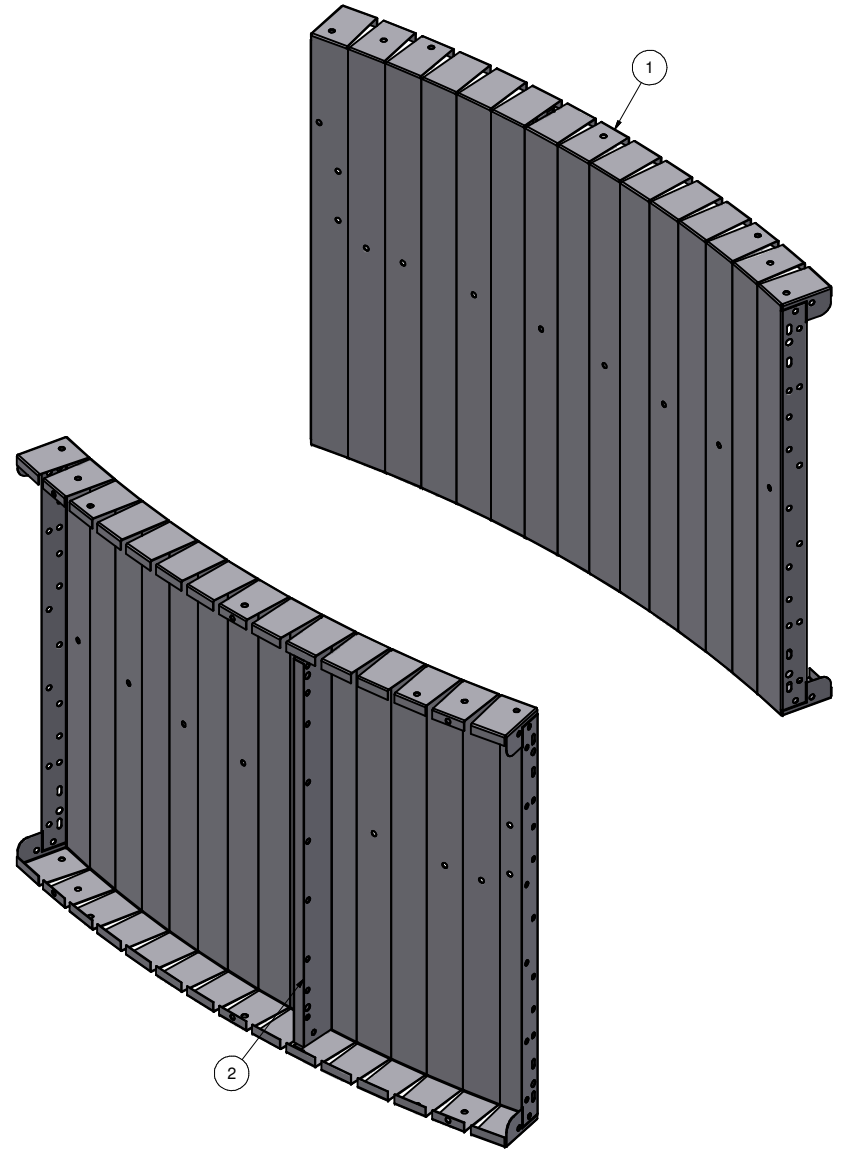
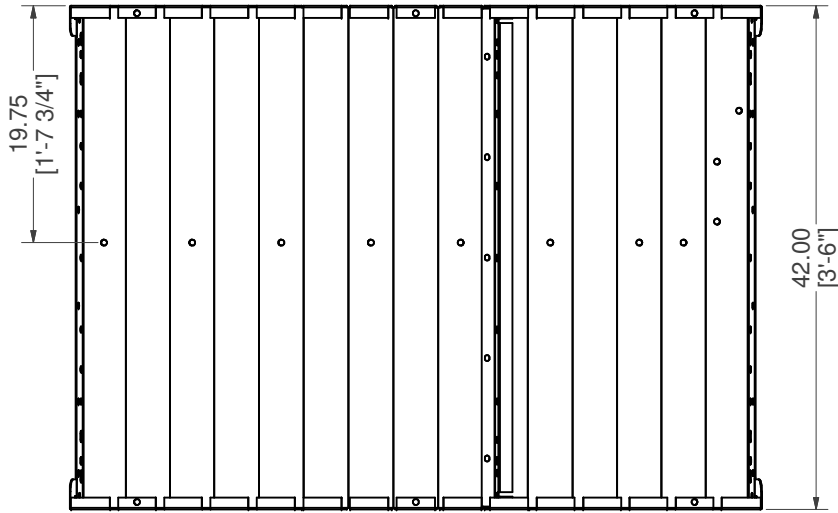
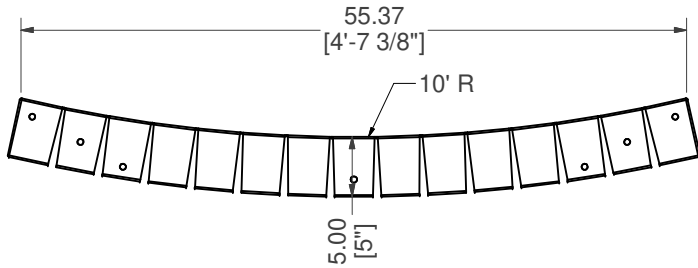


RADIUS, BACK WALL, W/Z-RIB


PART #: ESC-18600-BW 	WEIGHT: 68.96 lbmass	MACHINE TIME: N/A	FILE/DIRECTORY: C:\Vault\FTW\Design\CUSTOM STEPS\ESC-18000-18999\ESC-18600.idw
	TOLERANCES EXCEPT AS NOTED 0/0 0.0 0.00 0.000 0' ±1/8 ±0.25 ±0.0625 ±0.03125 ±1/2'	MATERIAL: DRAWN BY: PK	DATE: 4/30/2024 SHEET: 3 OF 21

Parts List			
ITEM	QTY	PART NUMBER	DESCRIPTION
1	1	ESC-18600-BWL	RADIUS, BACK WALL, LEFT
2	1	M0065-1	PANEL Z-RIB W/BUTTRESS HOLES

WELDCODE #4

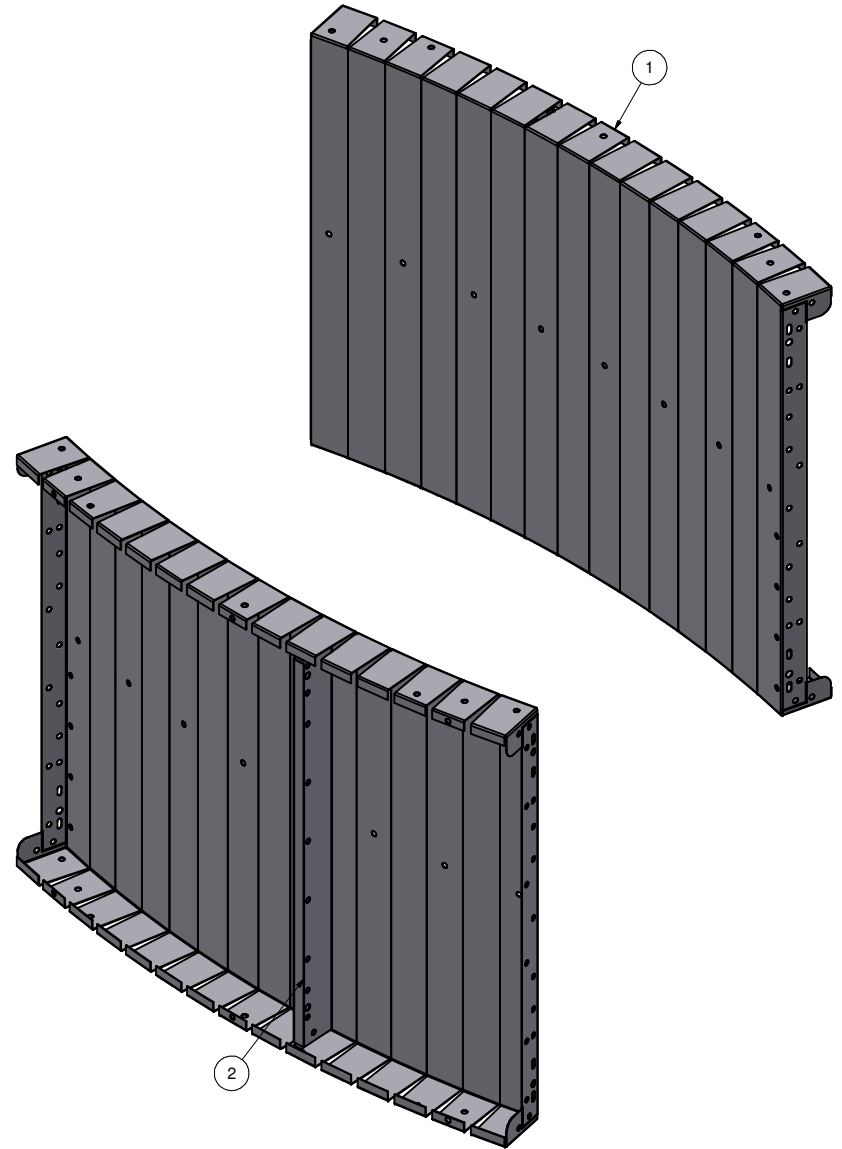
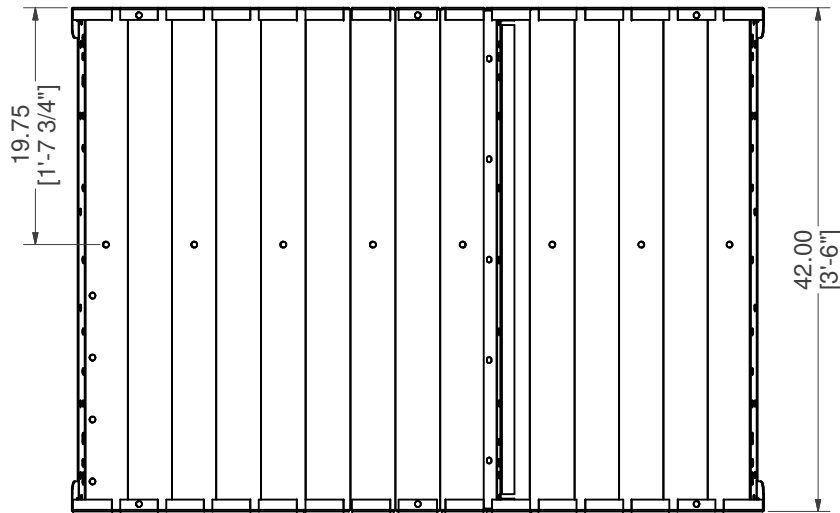
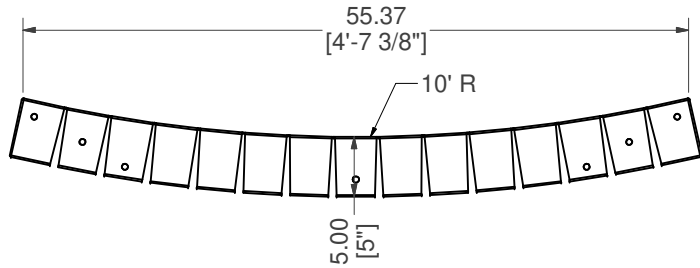


RADIUS, BACK WALL, LEFT W/Z-RIB

PART #: ESC-18600-BWL 	WEIGHT: 68.95 lbmass	MACHINE TIME: N/A	FILE/DIRECTORY: C:\Vault\FTW\Design\CUSTOM STEPS\ESC-18000-18999\ESC-18600.idw
	TOLERANCES EXCEPT AS NOTED 0/0 0.0 0.00 0.000 0' ±1/8 ±0.25 ±0.0625 ±0.03125 ±1/2'	MATERIAL: DRAWN BY: PK	DATE: 4/30/2024 SHEET: 4 OF 21

Parts List			
ITEM	QTY	PART NUMBER	DESCRIPTION
1	1	ESC-18600-BWR	RADIUS, BACK WALL, RIGHT
2	1	M0065-1	PANEL Z-RIB W/BUTTRESS HOLES

WELDCODE #4



RADIUS, BACK WALL, RIGHT W/Z-RIB

PART #: ESC-18600-BWR

WEIGHT:
68.95 lbmass

MACHINE TIME:
N/A

FILE/DIRECTORY:
C:\Vault\FTW\Design\CUSTOM STEPS\ESC-18000-18999\ESC-18600.idw



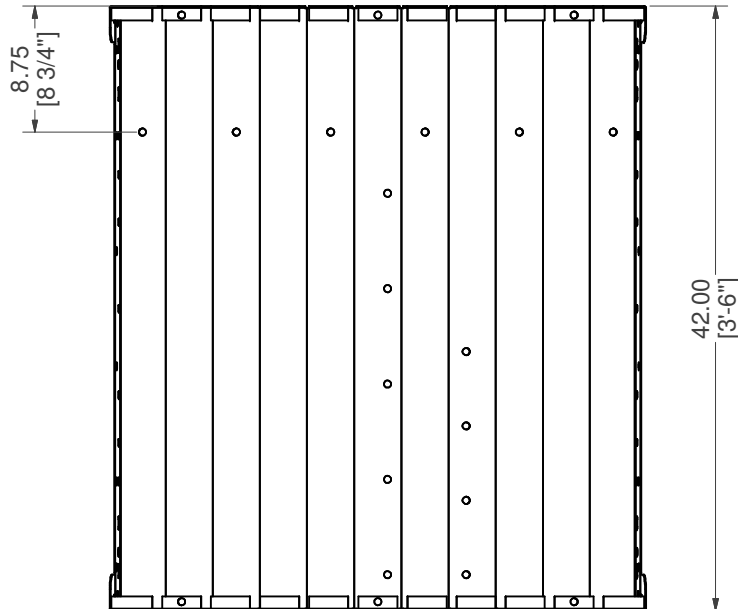
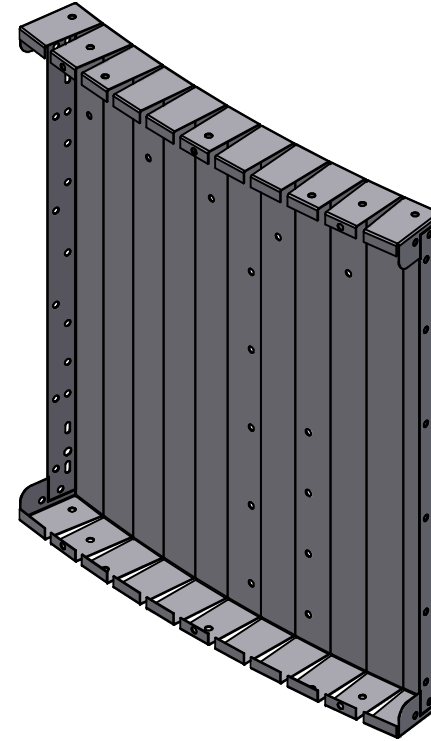
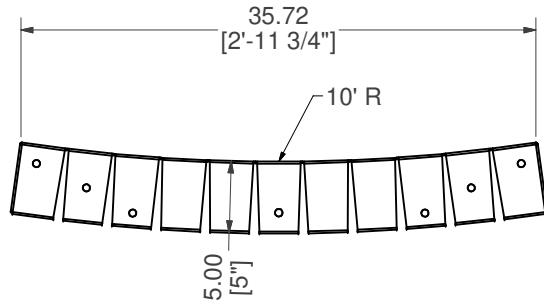
TOLERANCES EXCEPT AS NOTED
0/0 0.0 0.00 0.000 0'
±1/8 ±0.25 ±0.0625 ±0.03125 ±1/2'

MATERIAL:


DRAWN BY: PK

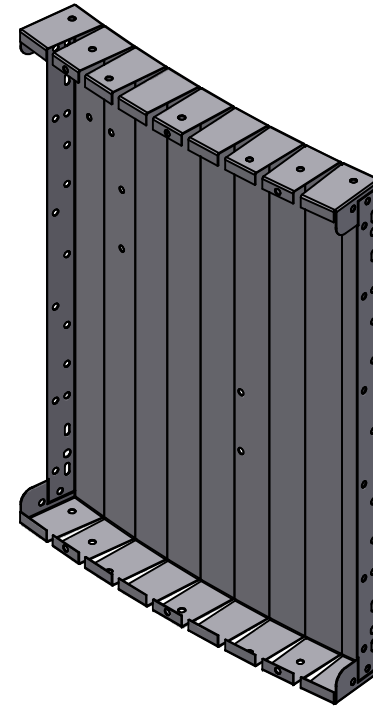
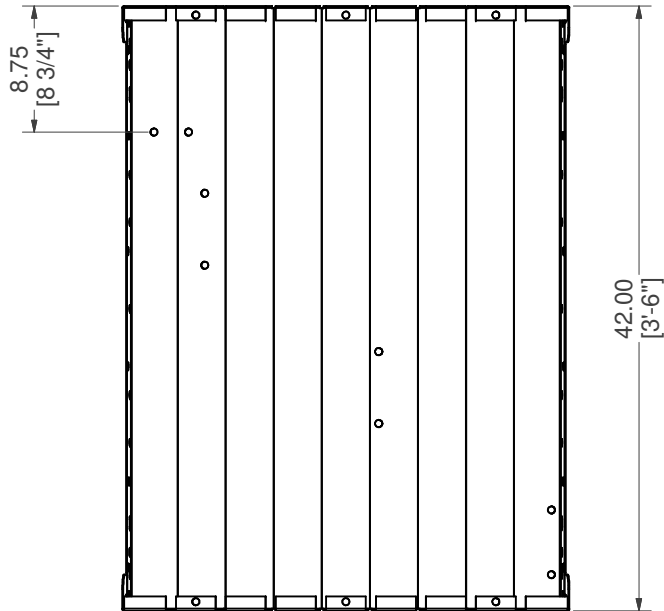
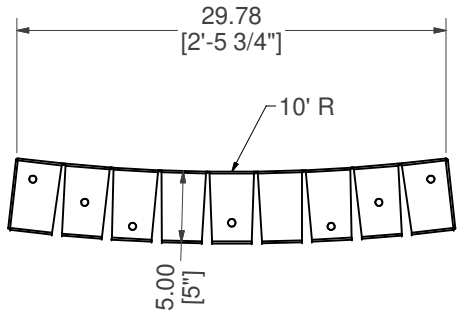
DATE: 4/30/2024
SHEET: 5 OF 21

NOTES:
WELDCODE #4
LOCATE 22" FROM
LEADING EDGE



RADIUS, SIDE WALL, LEFT

PART #: ESC-18600-SWL	WEIGHT: 42.20 lbmass	MACHINE TIME: N/A	FILE/DIRECTORY: C:\Vault\FTW\Design\CUSTOM STEPS\ESC-18000-18999\ESC-18600.idw
	TOLERANCES EXCEPT AS NOTED 0/0 0.0 0.00 0.000 0' ±1/8 ±0.25 ±0.0625 ±0.03125 ±1/2'	MATERIAL: 14 GA. GALVANIZED	DATE : 4/30/2024
		DRAWN BY: PK	SHEET : 6 OF 21
NOTES:			



RADIUS, SIDE WALL, LEFT END

PART #: ESC-18600-SWLE

WEIGHT:
35.91 lbmass

MACHINE TIME:
N/A

FILE/DIRECTORY:

C:\Vault\FTW\Design\CUSTOM STEPS\ESC-18000-18999\ESC-18600.idw

latham
The Pool Company

TOLERANCES EXCEPT
AS NOTED
0/0 0.0 0.00 0.000 0'
±1/8 ±0.25 ±0.0625 ±0.03125 ±1/2'

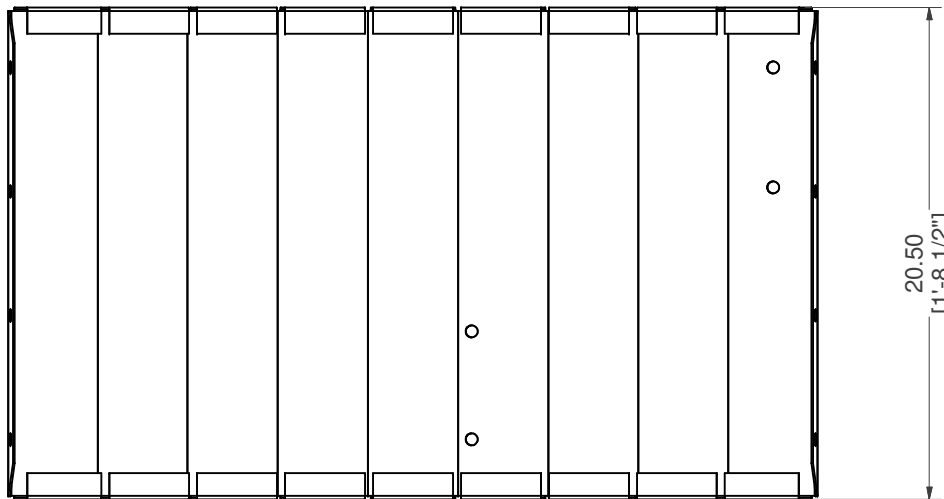
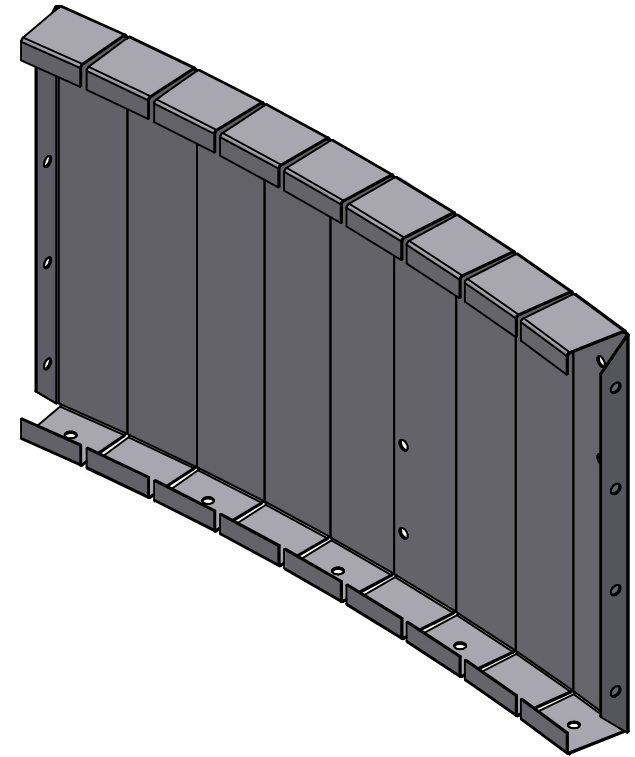
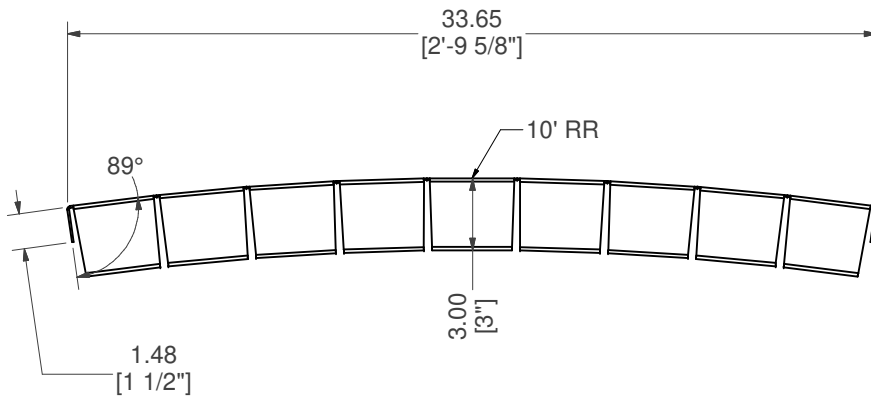
MATERIAL:
14 GA. GALVANIZED

DATE : 4/30/2024

NOTES:

DRAWN BY: PK

SHEET : 7 OF 21



REV RAD, SUNLEDGE RISER

PART #: ESC-18600-SR

WEIGHT:
19.79 lbmass

MACHINE TIME:
N/A

FILE/DIRECTORY:

C:\Vault\FTW\Design\CUSTOM STEPS\ESC-18000-18999\ESC-18600.idw

latham
The Pool Company

TOLERANCES EXCEPT
AS NOTED
0/0 0.0 0.00 0.000 0'
±1/8 ±0.25 ±0.0625 ±0.03125 ±1/2'

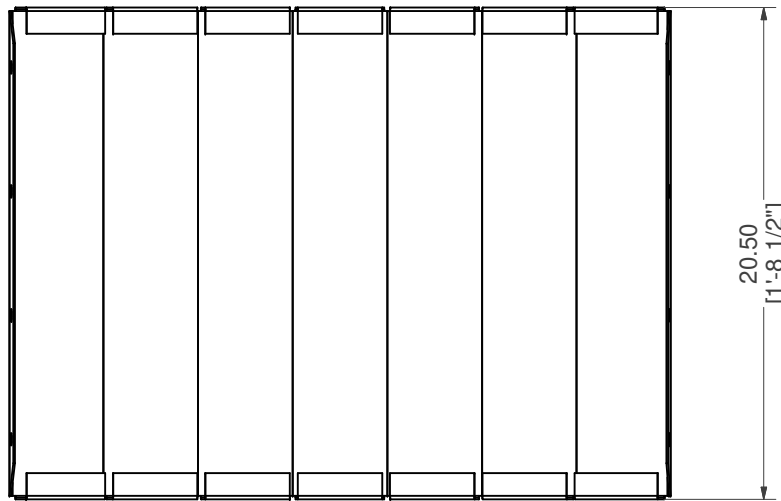
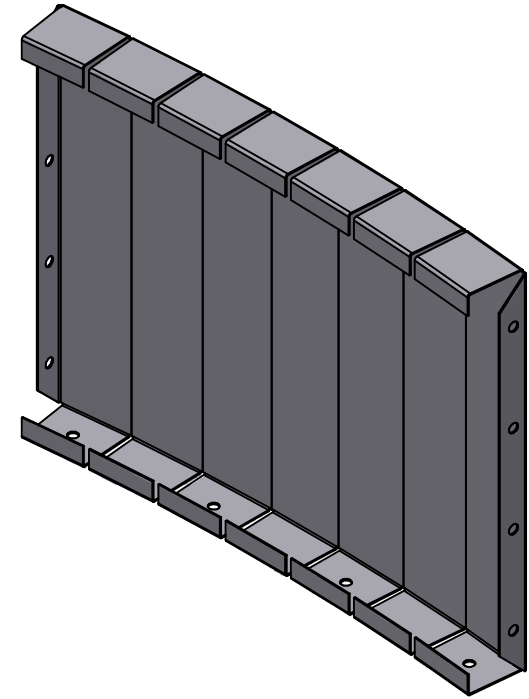
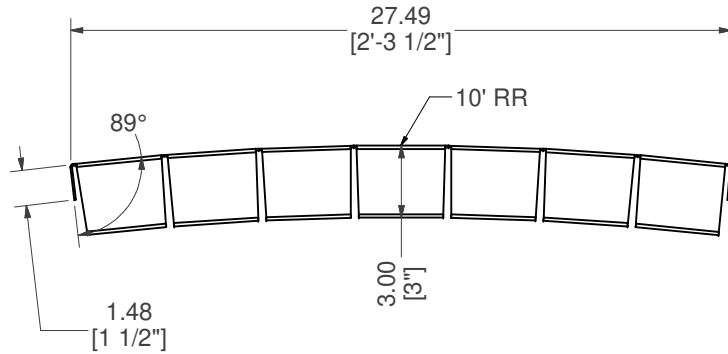
MATERIAL:
14 GA. GALVANIZED

DATE : 4/30/2024

NOTES:

DRAWN BY: PK

SHEET : 8 OF 21



REV RAD, SUNLEDGE RISER, LEFT

PART #: ESC-18600-SRL

WEIGHT:
16.38 lbmass

MACHINE TIME:
N/A

FILE/DIRECTORY:

C:\Vault\FTW\Design\CUSTOM STEPS\ESC-18000-18999\ESC-18600.idw

latham
The Pool Company

TOLERANCES EXCEPT
AS NOTED
0/0 0.0 0.00 0.000 0'
±1/8 ±0.25 ±0.0625 ±0.03125 ±1/2'

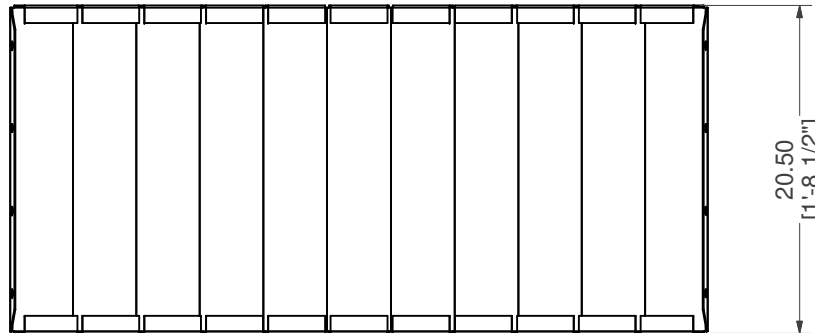
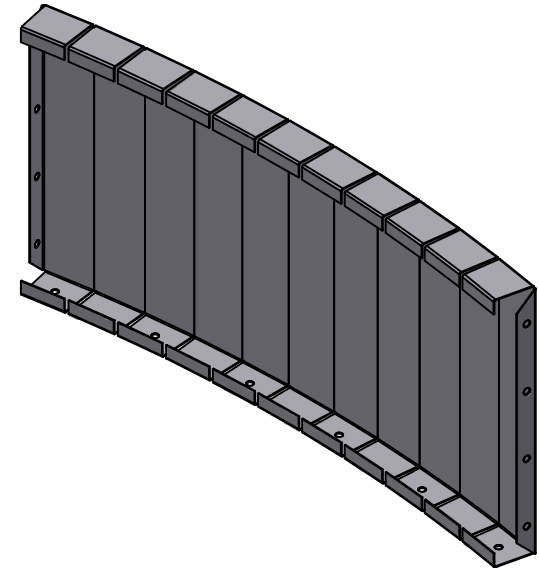
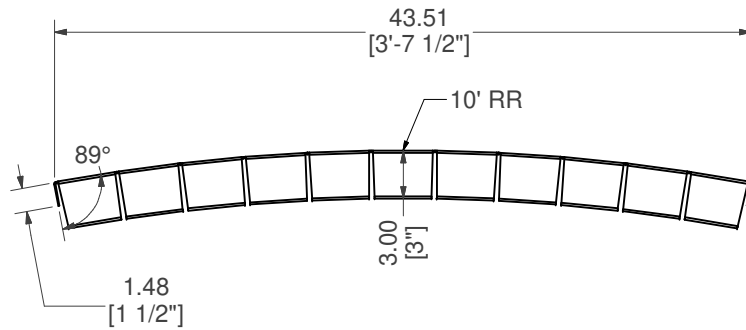
MATERIAL:
14 GA. GALVANIZED

DATE : 4/30/2024

NOTES:

DRAWN BY: PK

SHEET : 9 OF 21



REV RAD, SUNLEDGE RISER, RIGHT

PART #: ESC-18600-SRR

WEIGHT:
25.42 lbmass

MACHINE TIME:
N/A

FILE/DIRECTORY:
C:\Vault\FTW\Design\CUSTOM STEPS\ESC-18000-18999\ESC-18600.idw



TOLERANCES EXCEPT AS NOTED
0/0 0.0 0.00 0.000 0'
±1/8 ±0.25 ±0.0625 ±0.03125 ±1/2'

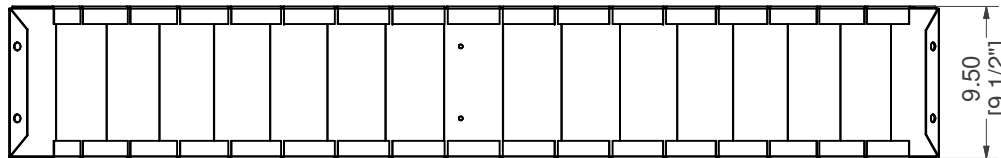
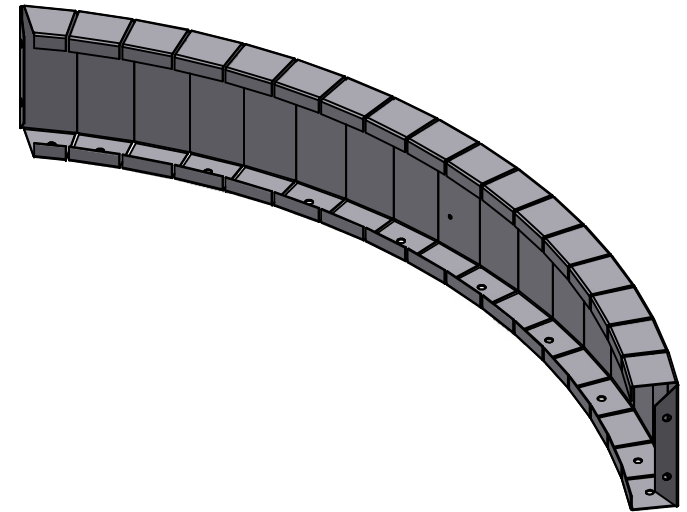
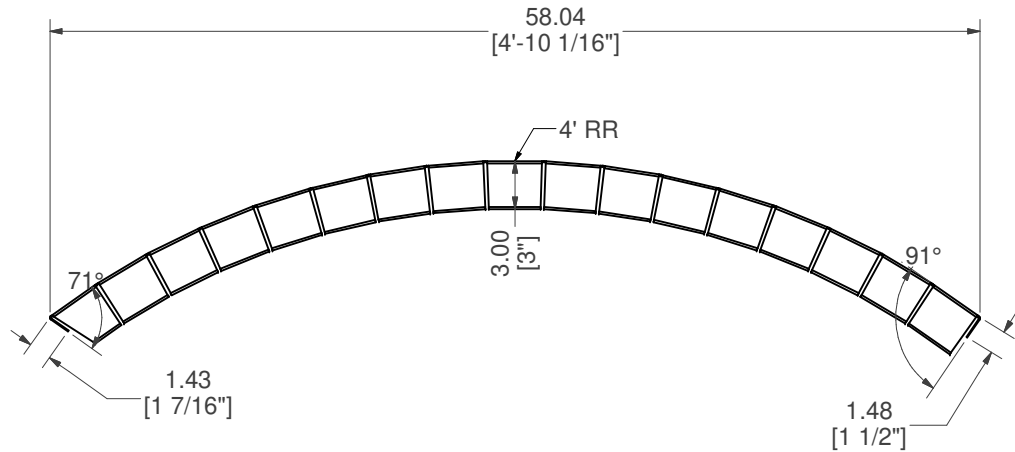
MATERIAL:
14 GA. GALVANIZED

DATE : 4/30/2024

NOTES:

DRAWN BY: PK

SHEET : 10 OF 21



REV RAD, BOTTOM RISER

PART #: ESC-18600-BR

WEIGHT:
21.09 lbmass

MACHINE TIME:
N/A

FILE/DIRECTORY:
C:\Vault\FTW\Design\CUSTOM STEPS\ESC-18000-18999\ESC-18600.idw

latham
The Pool Company

TOLERANCES EXCEPT
AS NOTED
0/0 0.0 0.00 0.000 0'
±1/8 ±0.25 ±0.0625 ±0.03125 ±1/2'

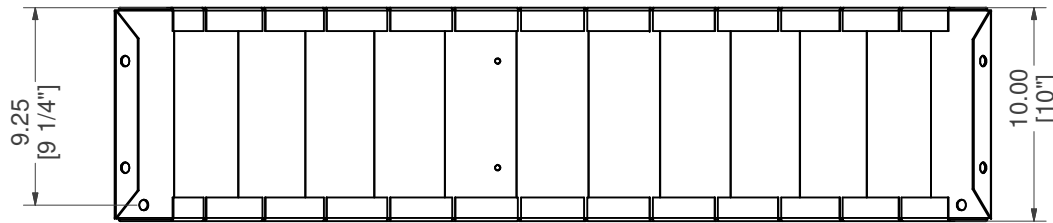
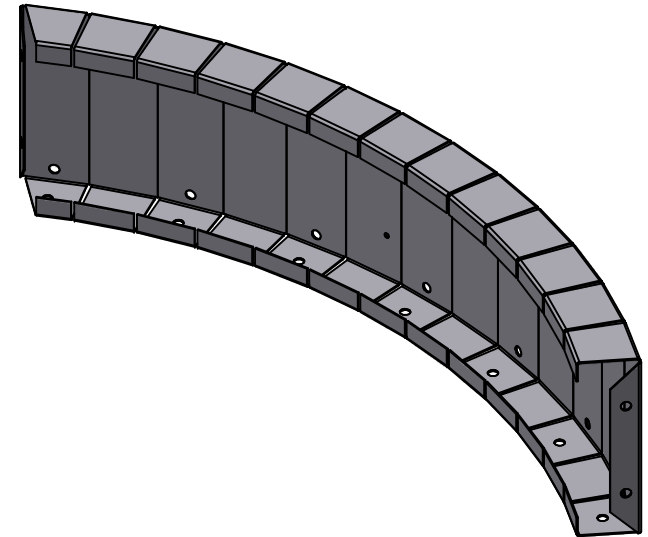
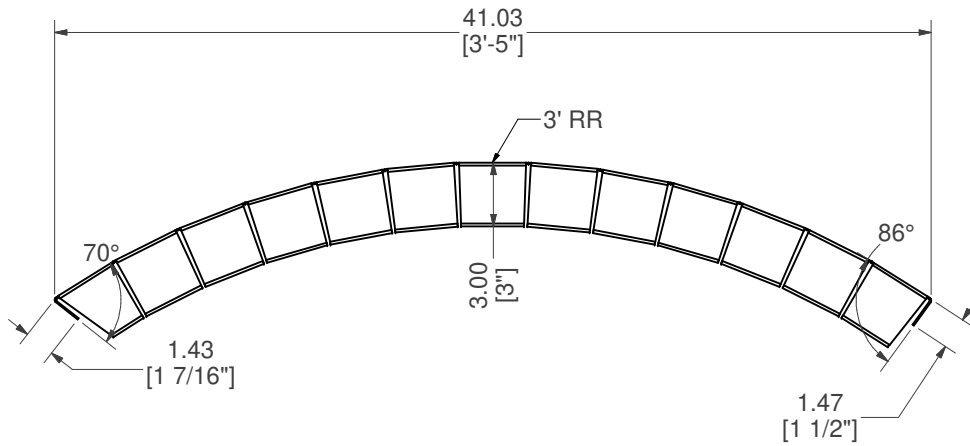
MATERIAL:
14 GA. GALVANIZED

DATE: 4/30/2024


NOTES:

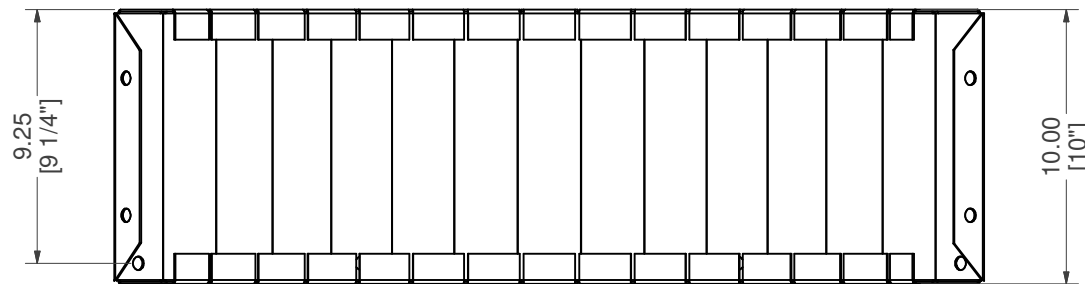
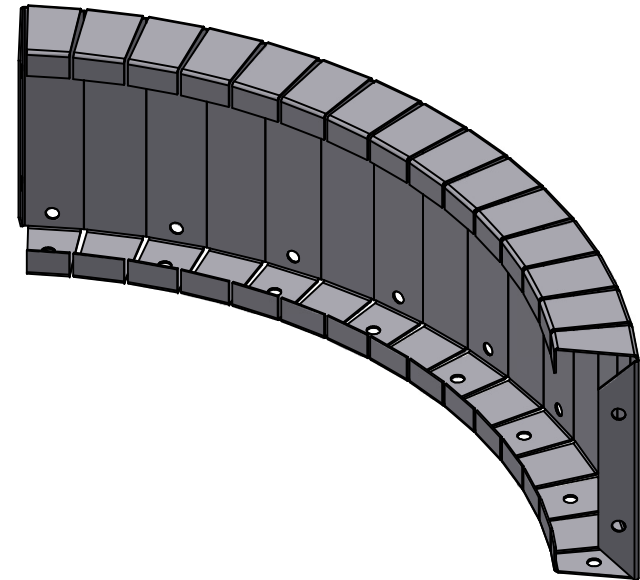
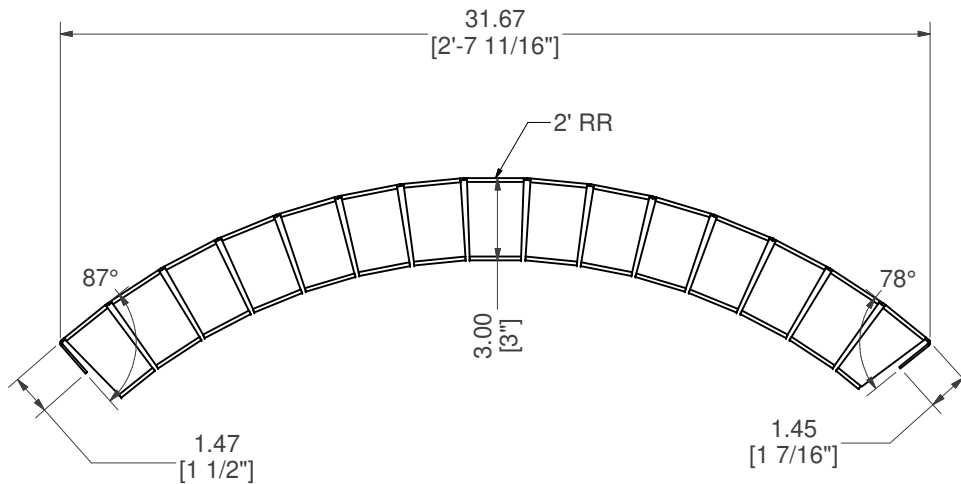
DRAWN BY: PK

SHEET: 11 OF 21



REV RAD, MIDDLE RISER

PART #: ESC-18600-MR 	WEIGHT: 15.21 lbmass	MACHINE TIME: N/A	FILE/DIRECTORY: C:\Vault\FTW\Design\CUSTOM STEPS\ESC-18000-18999\ESC-18600.idw
	TOLERANCES EXCEPT AS NOTED 0/0 0.0 0.00 0.000 0' ±1/8 ±0.25 ±0.0625 ±0.03125 ±1/2'	MATERIAL: 14 GA. GALVANIZED	DATE : 4/30/2024
	DRAWN BY: PK	SHEET : 12 OF 21	



REV RAD, TOP RISER, LEFT

PART #: ESC-18600-TRL

WEIGHT:
11.88 lbmass

MACHINE TIME:
N/A

FILE/DIRECTORY:

C:\Vault\FTW\Design\CUSTOM STEPS\ESC-18000-18999\ESC-18600.idw

latham
The Pool Company

TOLERANCES EXCEPT
AS NOTED
0/0 0.0 0.00 0.000 0'
±1/8 ±0.25 ±0.0625 ±0.03125 ±1/2'

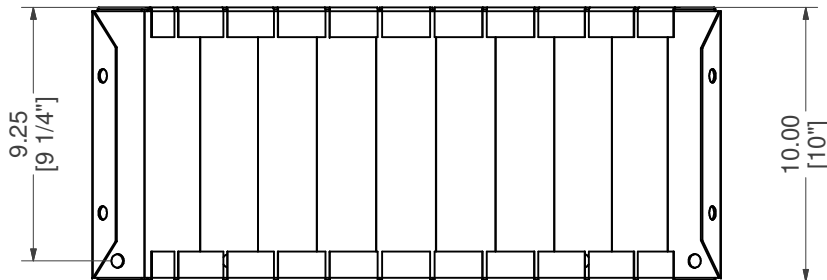
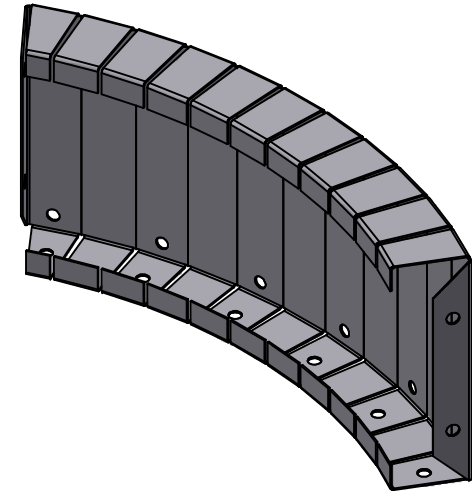
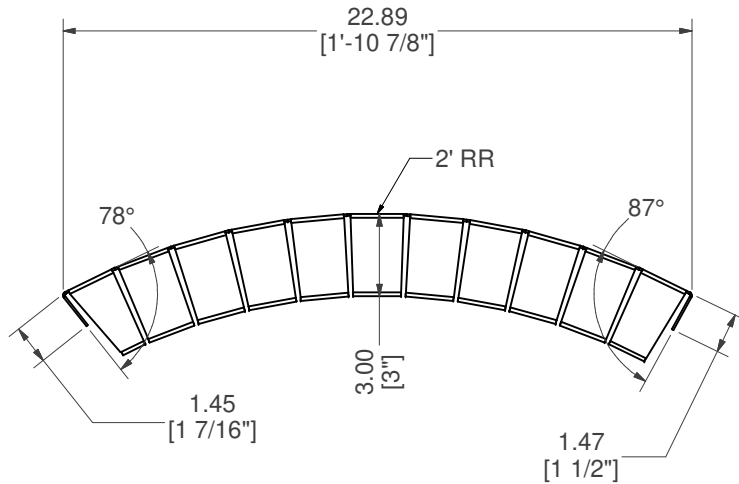
MATERIAL:
14 GA. GALVANIZED

DATE: 4/30/2024


NOTES:

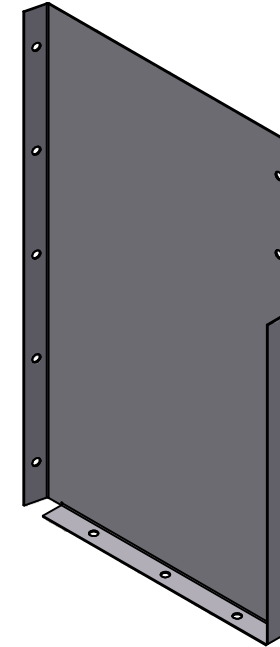
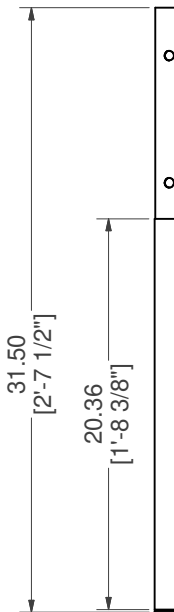
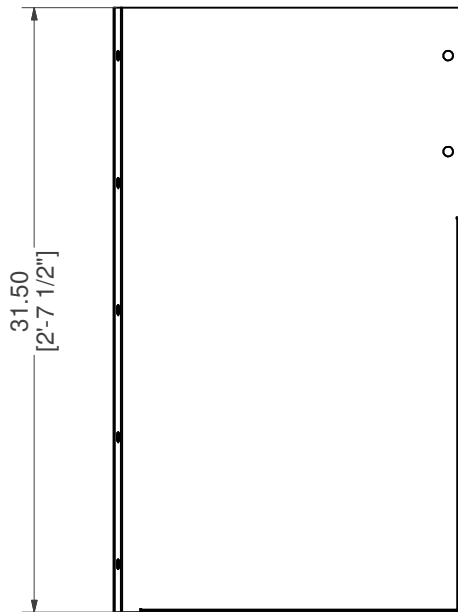
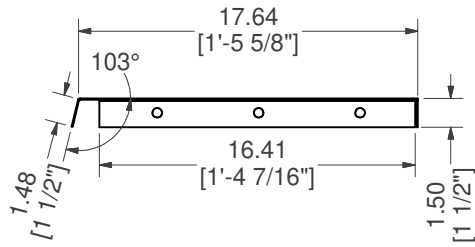
DRAWN BY: PK

SHEET: 13 OF 21




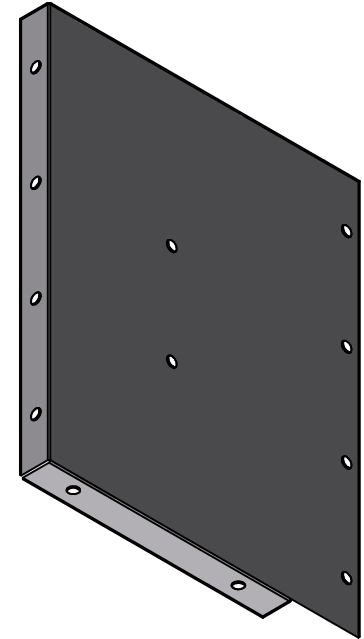
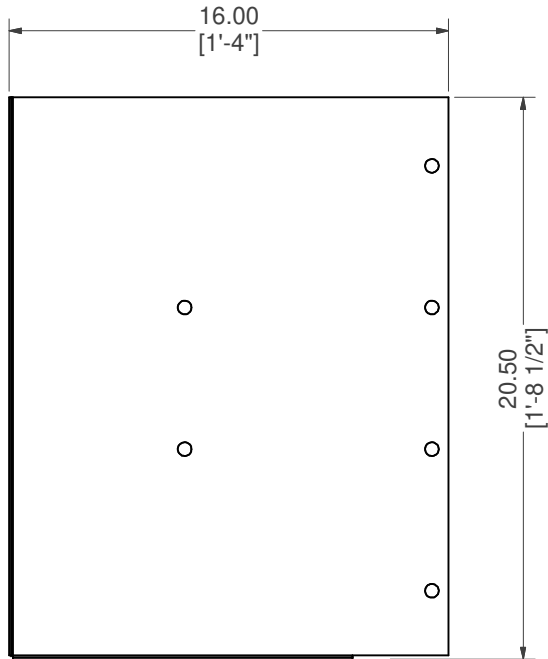
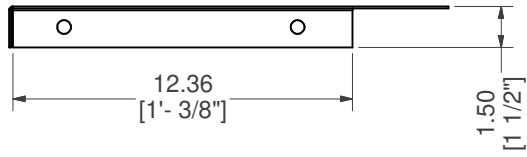
REV RAD, TOP RISER, RIGHT

PART #: ESC-18600-TRR 	WEIGHT: 8.25 lbmass	MACHINE TIME: N/A	FILE/DIRECTORY: C:\Vault\FTW\Design\CUSTOM STEPS\ESC-18000-18999\ESC-18600.idw
	TOLERANCES EXCEPT AS NOTED 0/0 0.0 0.00 0.000 0' ±1/8 ±0.25 ±0.0625 ±0.03125 ±1/2'	MATERIAL: 14 GA. GALVANIZED	DATE : 4/30/2024
DRAWN BY: PK	SHEET : 14 OF 21		




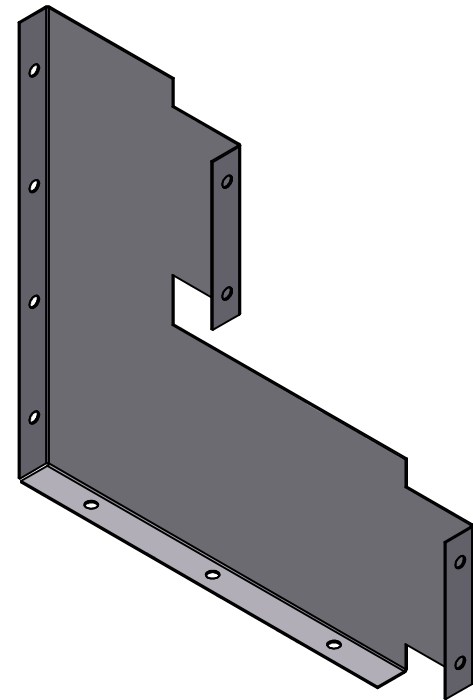
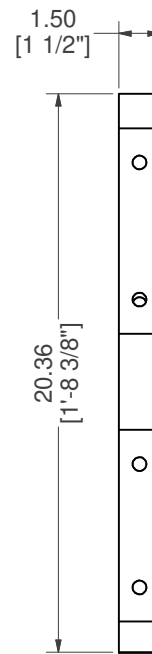
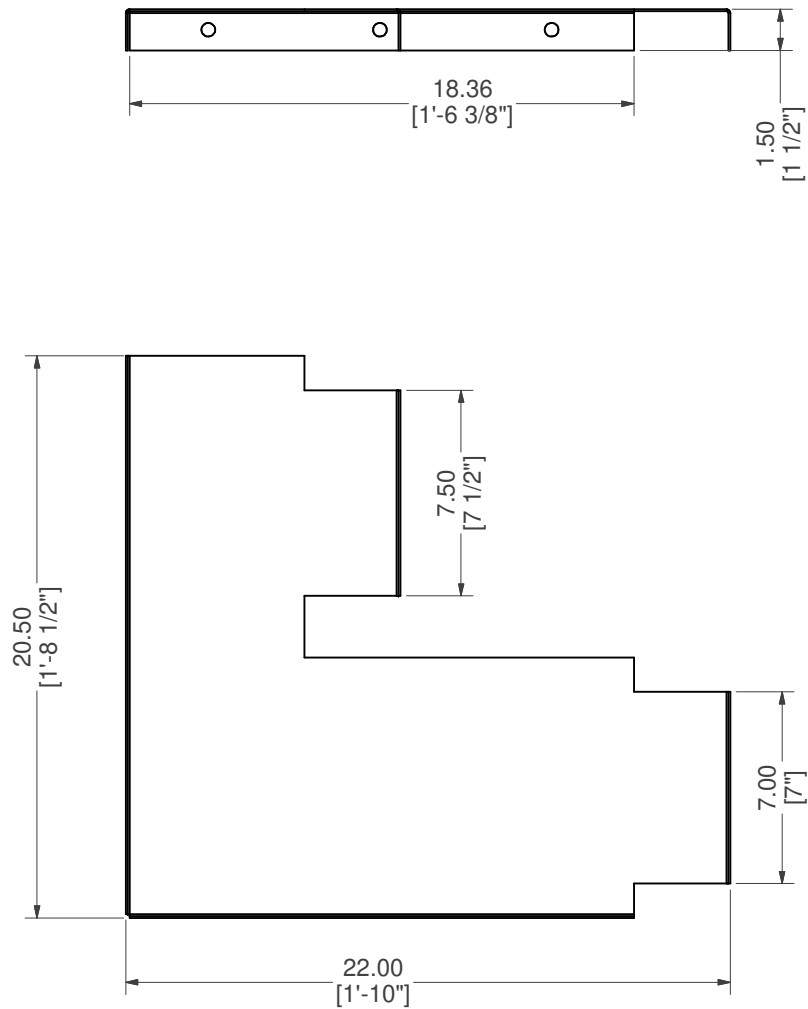
BRACE, TOP RISER SUPPORT

PART #: ESC-18600-TRB 	WEIGHT: 13.21 lbmass	MACHINE TIME: N/A	FILE/DIRECTORY: C:\Vault\FTW\Design\CUSTOM STEPS\ESC-18000-18999\ESC-18600.idw
	TOLERANCES EXCEPT AS NOTED 0/0 0.0 0.00 0.000 0' ±1/8 ±0.25 ±0.0625 ±0.03125 ±1/2'	MATERIAL: 14 GA. GALVANIZED	DATE : 4/30/2024
DRAWN BY: PK	SHEET : 15 OF 21		



BRACE, SUNLEDGE RISER SUPPORT

PART #: ESC-8874-SRS 	WEIGHT: 7.53 lbmass	MACHINE TIME: N/A	FILE/DIRECTORY: C:\Vault\FTW\Design\CUSTOM STEPS\ESC-18000-18999\ESC-18600.idw
	TOLERANCES EXCEPT AS NOTED 0/0 0.0 0.00 0.000 0' ±1/8 ±0.25 ±0.0625 ±0.03125 ±1/2'	MATERIAL: 14 GA. GALVANIZED	DATE : 4/30/2024
DRAWN BY: PK	SHEET : 16 OF 21		



BRACE, 2 RISER SUPPORT

PART #: ESC-18600-CSB

WEIGHT:
7.51 lbmass

MACHINE TIME:
N/A

FILE/DIRECTORY:

C:\Vault\FTW\Design\CUSTOM STEPS\ESC-18000-18999\ESC-18600.idw

latham
The Pool Company

TOLERANCES EXCEPT
AS NOTED
0/0 0.0 0.00 0.000 0'
±1/8 ±0.25 ±0.0625 ±0.03125 ±1/2'

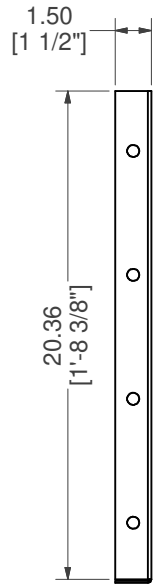
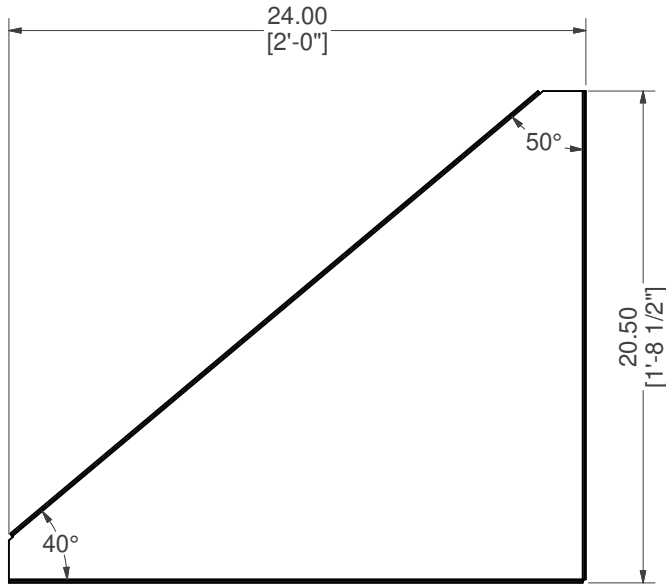
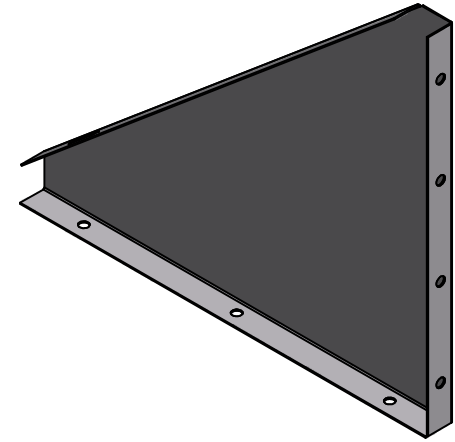
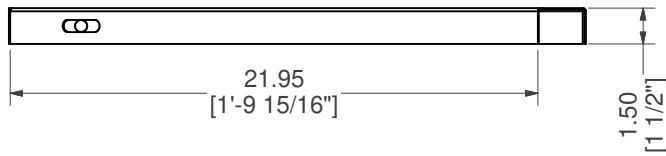
MATERIAL:
14 GA. GALVANIZED

DATE : 4/30/2024


NOTES:

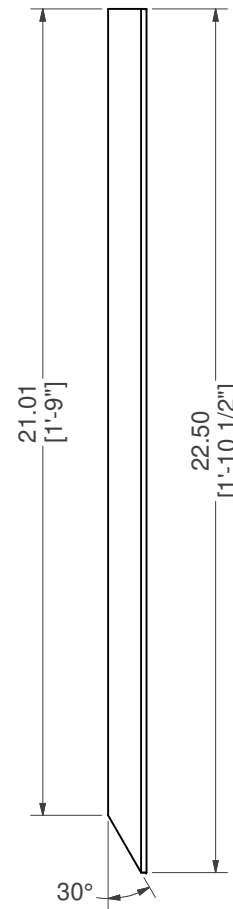
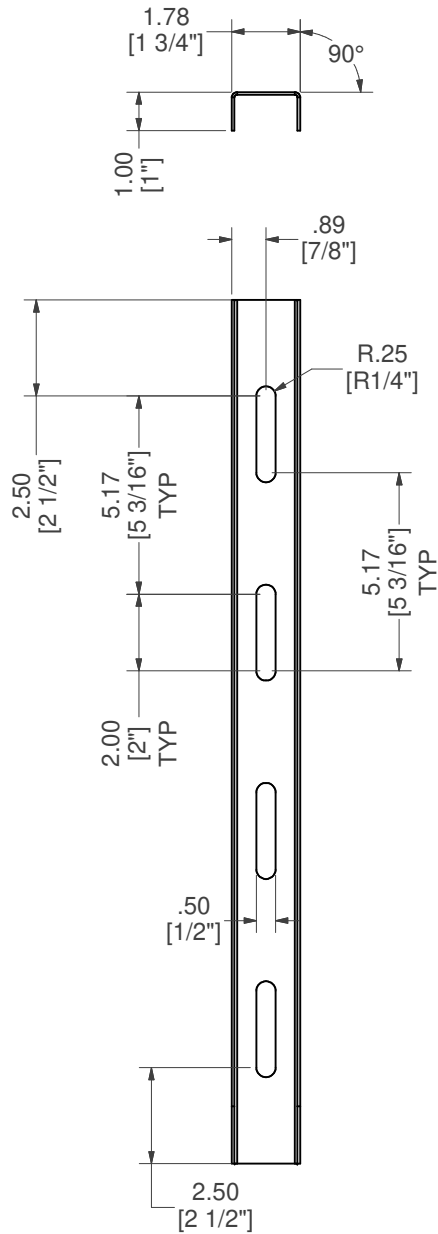
DRAWN BY: PK

SHEET : 17 OF 21




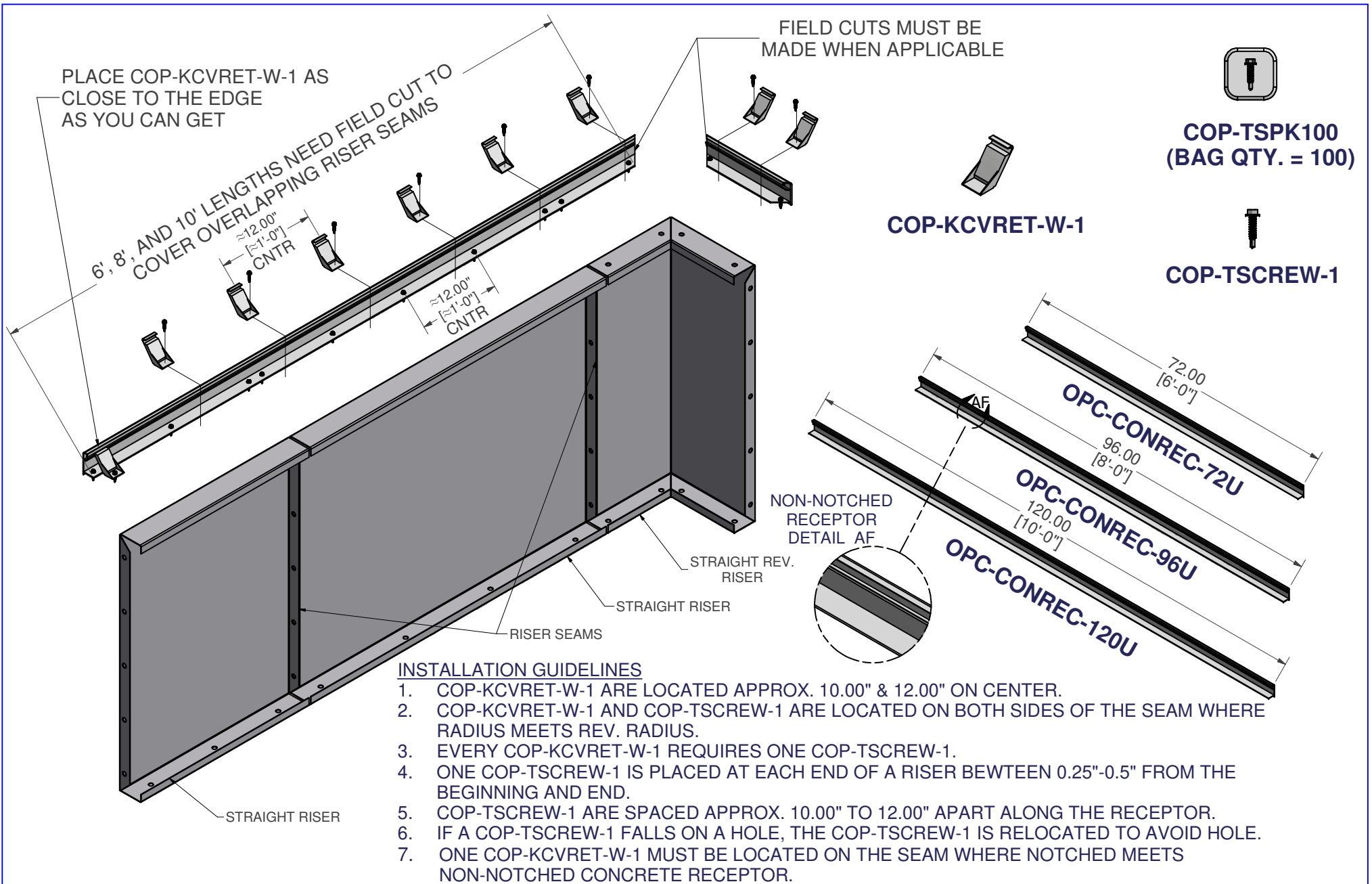
BRACE, SUNLEDGE RISER ANGLE SUPPORT

PART #: ESC-8420-BUB	WEIGHT: 7.86 lbmass	MACHINE TIME: N/A	FILE/DIRECTORY: C:\Vault\FTW\Design\CUSTOM STEPS\ESC-18000-18999\ESC-18600.idw
	TOLERANCES EXCEPT AS NOTED 0/0 0.0 0.00 0.000 0' ±1/8 ±0.25 ±0.0625 ±0.03125 ±1/2'	MATERIAL: 14 GA. GALVANIZED	DATE : 4/30/2024
		DRAWN BY: PK	SHEET : 18 OF 21
NOTES:			



BRACE, DRIVE STAKE CHANNEL SET

PART #: ESC-9383-DS 	WEIGHT: 1.50 lbmass	MACHINE TIME: N/A	FILE/DIRECTORY: C:\Vault\FTW\Design\CUSTOM STEPS\ESC-18000-18999\ESC-18600.idw
	TOLERANCES EXCEPT AS NOTED 0/0 0.0 0.00 0.000 0' ±1/8 ±0.25 ±0.0625 ±0.03125 ±1/2'	MATERIAL: 14 GA. GALVANIZED	DATE : 4/30/2024
	DRAWN BY: PK	SHEET : 19 OF 21	



INSTALLATION GUIDELINES

1. COP-KCVRET-W-1 ARE LOCATED APPROX. 10.00" & 12.00" ON CENTER.
2. COP-KCVRET-W-1 AND COP-TSCREW-1 ARE LOCATED ON BOTH SIDES OF THE SEAM WHERE RADIUS MEETS REV. RADIUS.
3. EVERY COP-KCVRET-W-1 REQUIRES ONE COP-TSCREW-1.
4. ONE COP-TSCREW-1 IS PLACED AT EACH END OF A RISER BETWEEN 0.25"-0.5" FROM THE BEGINNING AND END.
5. COP-TSCREW-1 ARE SPACED APPROX. 10.00" TO 12.00" APART ALONG THE RECEPTOR.
6. IF A COP-TSCREW-1 FALLS ON A HOLE, THE COP-TSCREW-1 IS RELOCATED TO AVOID HOLE.
7. ONE COP-KCVRET-W-1 MUST BE LOCATED ON THE SEAM WHERE NOTCHED MEETS NON-NOTCHED CONCRETE RECEPTOR.

NON-NOTCHED CONCRETE RECEPTOR FIELD INSTALLATION

PART #: STRAIGHT CONCRETE RECEPTOR 	WEIGHT: 77.51 lbmass	MACHINE TIME: N/A	FILE/DIRECTORY: C:\Vault\FTW\Design\CUSTOM STEPS\ESC-18000-18999\ESC-18600.idw
	TOLERANCES EXCEPT AS NOTED 0/0 0.0 0.00 0.000 0' ±1/8 ±0.25 ±0.0625 ±0.03125 ±1/2"	MATERIAL:	DATE: 4/30/2024
DRAWN BY: PK	SHEET: 20 OF 21		

PLACE COP-KCVRET-W-1 AT SEAMS WHERE STRAIGHT MEETS A RADIUS/REV. RADIUS.

PLACE COP-TSCREW-1 ON BOTH SIDES OF THE SEAMS.

PLACE COP-KCVRET-W-1 AS CLOSE TO THE END EDGE AS YOU CAN GET.

FIELD CUTS MUST BE MADE WHEN APPLICABLE

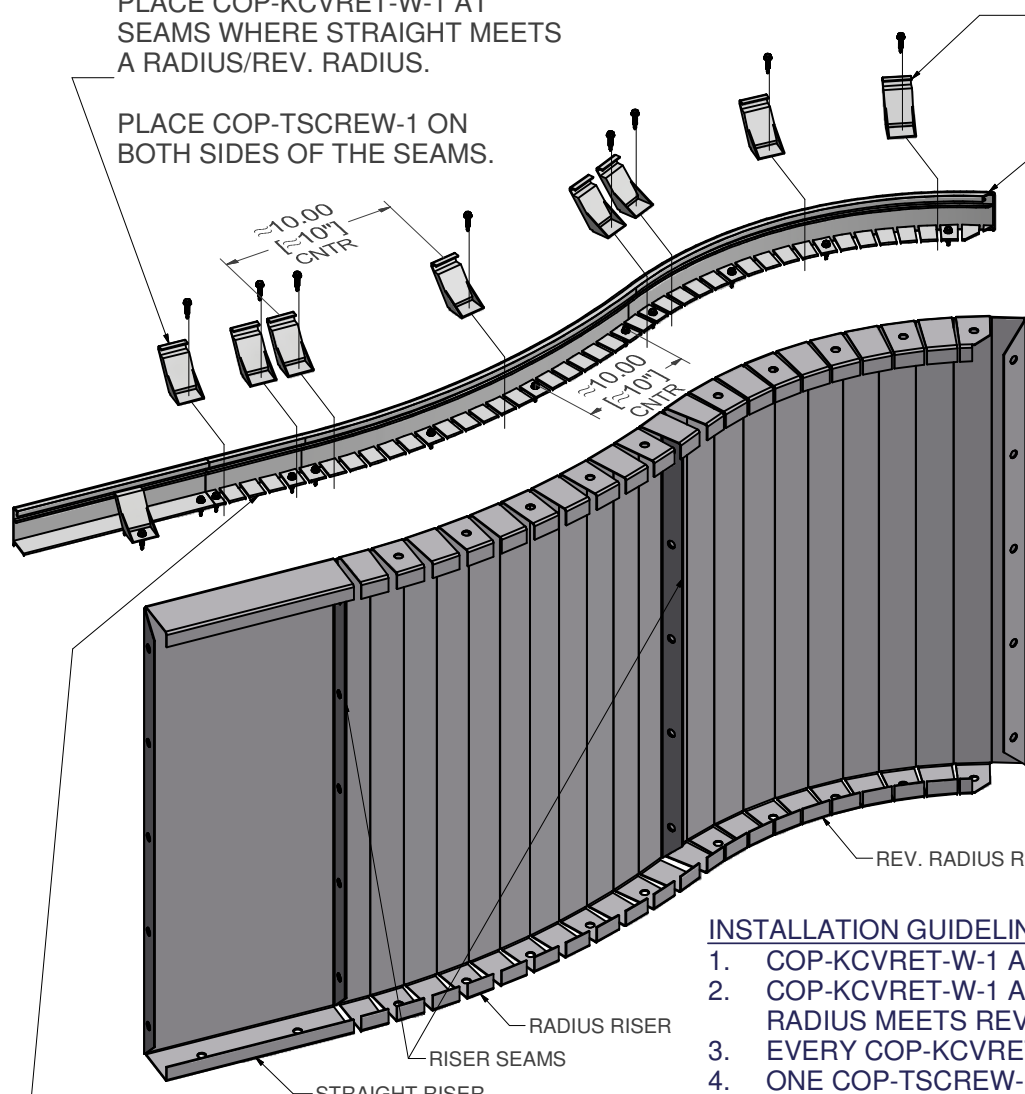


COP-TSPK100
(BAG QTY. = 100)

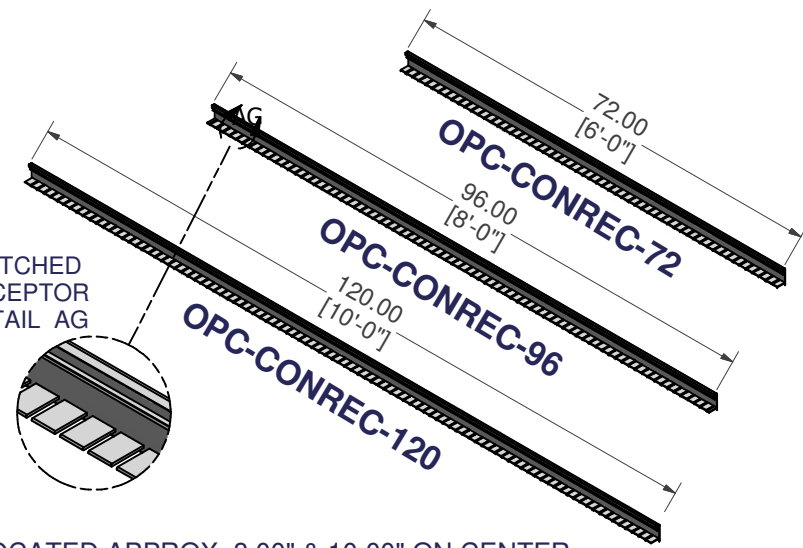


COP-TSCREW-1

COP-KCVRET-W-1



NOTCHED RECEPTOR DETAIL AG



ALLOW AN APPROX. OF 6.00" OF OVERLAP GOING FROM RADIUS/ REV. RADIUS TO A STRAIGHT RISER.

INSTALLATION GUIDELINES

1. COP-KCVRET-W-1 ARE LOCATED APPROX. 8.00" & 10.00" ON CENTER.
2. COP-KCVRET-W-1 AND COP-TSCREW-1 ARE LOCATED ON BOTH SIDES OF THE SEAM WHERE RADIUS MEETS REV. RADIUS.
3. EVERY COP-KCVRET-W-1 REQUIRES ONE COP-TSCREW-1.
4. ONE COP-TSCREW-1 IS PLACED AT EACH END OF A RISER BETWEEN 0.25"-0.5" FROM THE BEGINNING AND END.
5. COP-TSCREW-1 ARE SPACED APPROX. 8.00" TO 10.00" APART ALONG THE RECEPTOR.
6. IF A COP-TSCREW-1 FALLS ON A HOLE, THE COP-TSCREW-1 IS RELOCATED TO AVOID HOLE.
7. ONE COP-KCVRET-W-1 MUST BE LOCATED ON THE SEAM WHERE NOTCHED MEETS NON-NOTCHED CONCRETE RECEPTOR.

NOTCHED CONCRETE RECEPTOR FIELD INSTALLATION

PART #: REV-RADIUS CONCRETE RECEPTOR

WEIGHT:
52.49 lbmass

MACHINE TIME:
N/A

FILE/DIRECTORY:

C:\Vault\FTW\Design\CUSTOM STEPS\ESC-18000-18999\ESC-18600.idw



TOLERANCES EXCEPT AS NOTED
0/0 0.0 0.00 0.000 0'
±1/8 ±0.25 ±0.0625 ±0.03125 ±1/2"

MATERIAL:

DATE: 4/30/2024

NOTES:

DRAWN BY: PK

SHEET: 21 OF 21