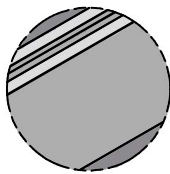


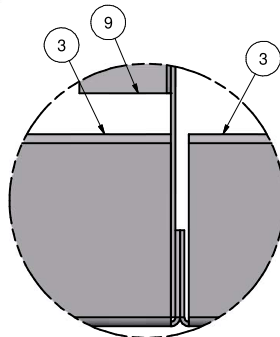
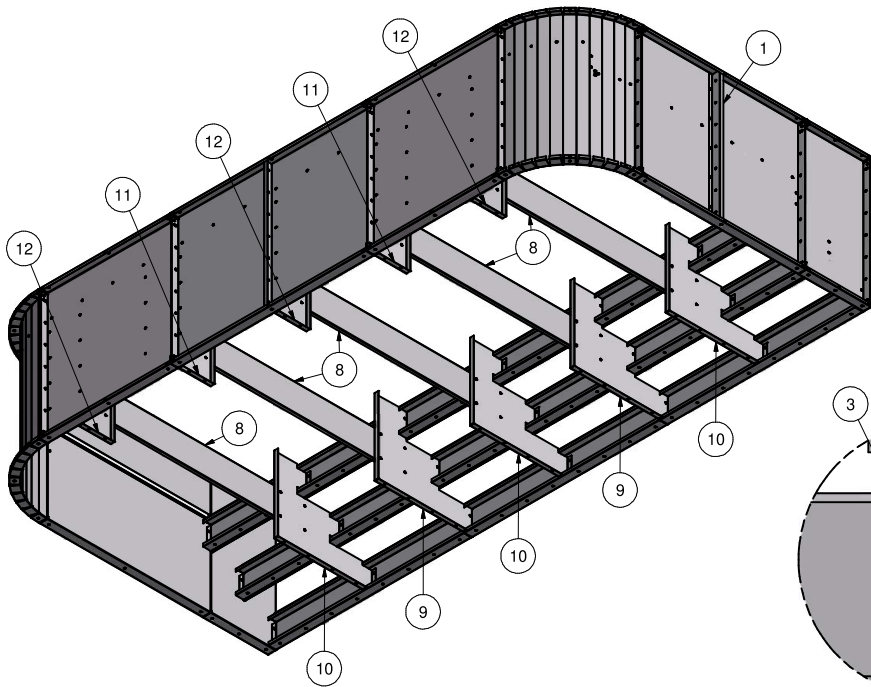
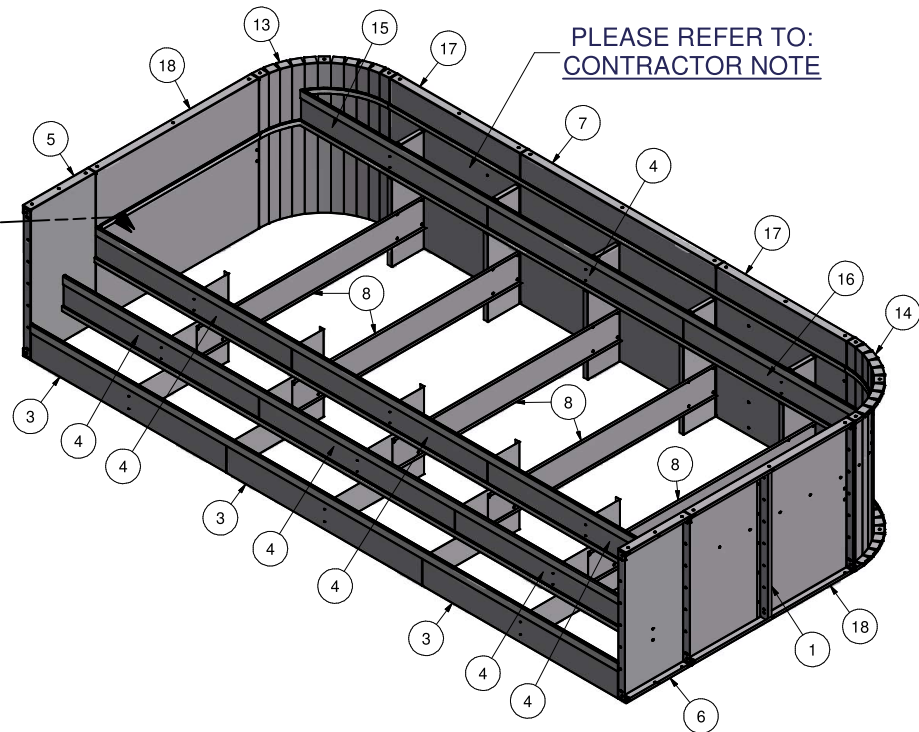
Parts List

ITEM	QTY	PART NUMBER	DESCRIPTION
1	3	48-Z-RIB	48" Z-RIB
2	84	COP-KCVRET-W-1	COP COPING STIFFNER 1 5/8"-1PC
3	3	ESC-17150-BR	STRAIGHT, BOTTOM RISER
4	7	ESC-17150-MR	STRAIGHT, MIDDLE RISER
5	1	ESC-17170-SWFL	STRAIGHT, SIDE WALL, FRONT, LEFT
6	1	ESC-17170-SWFR	STRAIGHT, SIDE WALL, FRONT, RIGHT
7	1	ESC-17256-BWR	STRAIGHT, BACK WALL, RIGHT
8	5	ESC-17646-CB	BRACE, CENTER SUPPORT
9	2	ESC-17749-B	BRACE, 3-RISER SUPPORT
10	3	ESC-17749-CSB	BRACE, 3-RISER SUPPORT
11	2	ESC-17749-TRB	BRACE, TOP RISER SUPPORT
12	3	ESC-17749-TRS	BRACE, TOP RISER SUPPORT
13	1	ESC-18602-CWL	RADIUS, CORNER WALL, LEFT
14	1	ESC-18602-CWR	RADIUS, CORNER WALL, RIGHT
15	1	ESC-18602-TRL	STRAIGHT, TOP RISER, LEFT
16	1	ESC-18602-TRR	STRAIGHT, TOP RISER, RIGHT
17	2	ESC-18611-BW	STRAIGHT, BACK WALL
18	2	ESC-18611-SW	STRAIGHT, SIDE WALL
19	0'	OPC-CONREC-XX	NOTCHED CONCRETE RECEPTOR
20	72'	OPC-CONREC-XXU	UN-NOTCHED CONCRETE RECEPTOR
21	86'	SSC-1099-PFT	STEEL STEP PVC BEAD RECEIVER

**NOTE:**  
RIGHT AND LEFT SIDE PARTS  
ARE SYMMETRICAL.



BEAD  
RECEIVER  
DETAIL



**TOP VIEW**  
BRACE CONNECTED TO  
INSIDE FLANGE OF LEFT RISER

KEEP BEAD RECEIVER ATTACHED TO THE RISERS AND WALL PANELS FOR SHIPPING. A TOTAL OF 1032" (86') OF BEAD RECEIVER IS REQUIRED.

**CONTRACTOR NOTE:**

CONTRACTOR IS RESPONSIBLE FOR SECURING ALL RISERS INTO PLACE WITH REBAR HOLES BEFORE BACKFILLING THIS CUSTOM STEP

**CONTRACTOR MUST FIELD FIT ALL CONCRETE RECEPTOR.**

TOTALS REQUIRED FOR THIS CUSTOM PRODUCT APPLICATION.

OPC-CONREC-XX (NOTCHED) = 0" (0')

OPC-CONREC-XXU (UN-NOTCHED) = 864" (72')

COP-KCVRET-W-1 (STIFFENER) = 84

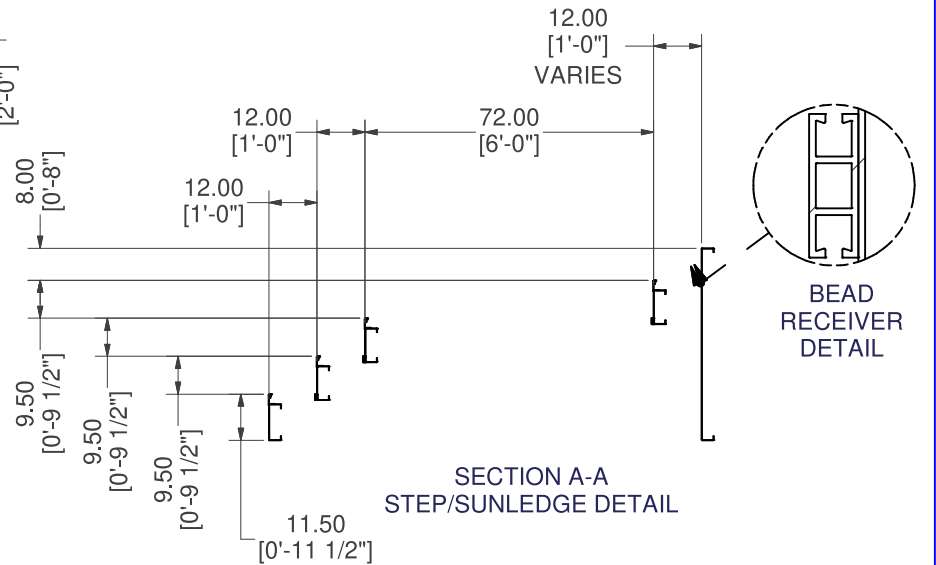
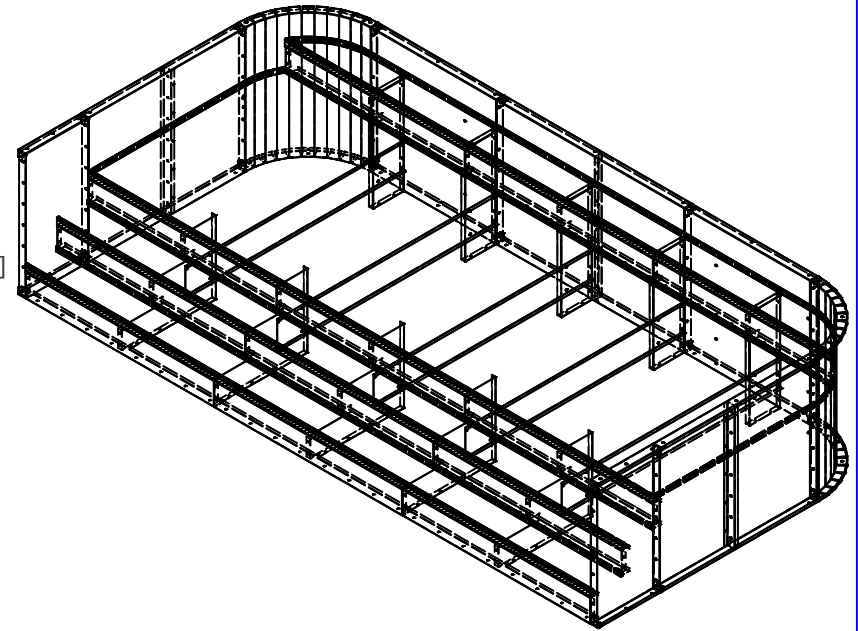
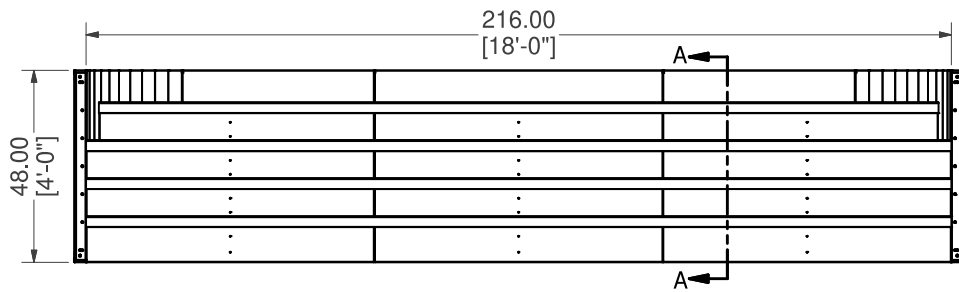
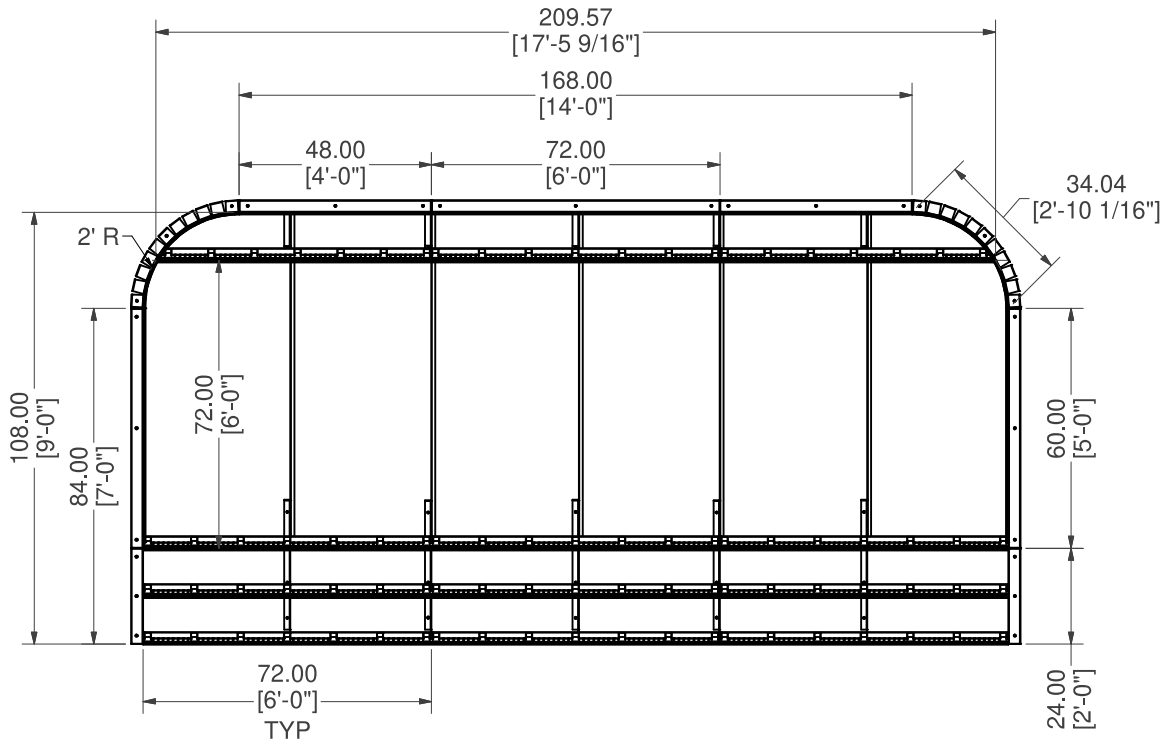
**CONTRACTOR NOTE:**

BACK FILL STEP/ SUNLEDGE AREA WITH COMPACTED EARTH MATERIAL. FINISH STEP/ SUNLEDGE AREA WITH 2" OF HARDEN FLOOR MATERIAL TO MATCH REQUIRED DEPTH (FLUSH WITH TOP OF BEAD RECEIVER).

# 18' X 9' X 2'R CRN OPEN TOP STEP W/ 6' MIDDLE TREAD OPN

<b>PART #:</b> ESC-18611	<b>WEIGHT:</b> 1063.10 lbmass	<b>MACHINE TIME:</b> N/A	<b>FILE/DIRECTORY:</b> C:\Vault\FTW\Design\CUSTOM STEPS\ESC-18000-18999\ESC-18611.idw
	TOLERANCES EXCEPT AS NOTED 0/0 0.0 0.00 0.000 0' ±1/8 ±0.25 ±0.0625 ±0.03125 ±1/2"	<b>MATERIAL:</b>	<b>DATE:</b> 5/2/2024
		<b>DRAWN BY:</b> SG	<b>SHEET:</b> 1 OF 17
<b>NOTES:</b>			

**NOTE:**  
RIGHT AND LEFT SIDE PARTS  
ARE SYMMETRICAL.



# 18' X 9' X 2'R CRN OPEN TOP STEP W/ 6' MIDDLE TREAD OPN

<b>PART #:</b> ESC-18611	<b>WEIGHT:</b> 1063.10 lbmass	<b>MACHINE TIME:</b> N/A	<b>FILE/DIRECTORY:</b> C:\Vault\FTW\Design\CUSTOM STEPS\ESC-18000-18999\ESC-18611.idw
	TOLERANCES EXCEPT AS NOTED	<b>MATERIAL:</b>	<b>DATE:</b> 5/2/2024
	0/0 0.0 0.00 0.000 0'	<b>DRAWN BY:</b> SG	<b>SHEET:</b> 2 OF 17
±1/8 ±0.25 ±0.0625 ±0.03125 ±1/2'			<b>NOTES:</b>