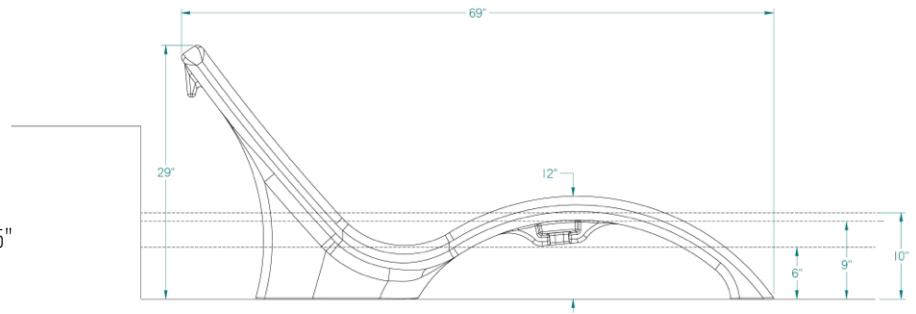


GLOBAL LOUNGER™

- Sleek, rotomolded design
- Integrated handle for easy lifting
- Easy to fill, use, maintain, drain, and remove
- Compatible with all pool types
- Optional deep water kit, connecting table, and headrest
- Designed for water depths of 0-10"
- Deep water kit designed for water depths of 10-16.5"
- UV resistant linear low density polyethylene
- Salt and chlorine water friendly
- Empty Chair Weight: 64 lbs/29 kg
- Weight Limit: 300 lbs/136 kg

* Patent Pending



Lounger and Table Colors



Granite Grey



Granite Sandstone

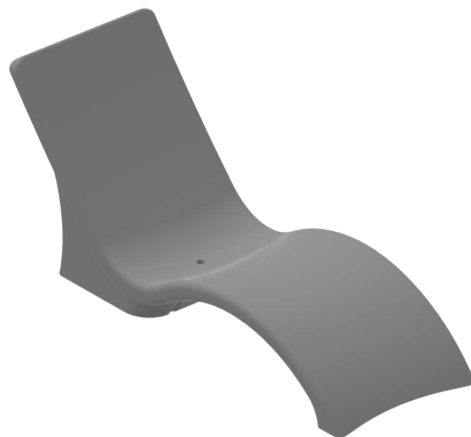


White

*Actual colors may vary

PART NUMBER	DESCRIPTION
GPP-LF-LC-X	Global Lounger - Lounger Only
GPP-LF-DW-X	Global Lounger - Deep Water Kit Only
GPP-LF-ST-X	Global Lounger - Connecting Table Only
GPP-LF-LCH-X	Global Lounger - Headrest Only
GPP-LFS-X	Global Lounger - Lounger and Connecting Table

To select a color for the lounger and/or connecting table, replace "X" in the part number above with "G" for grey, "S" for sandstone, or "W" for white. To select a color for the headrest, replace "X" in the part number above with "G" for grey, "S" for sand, or "N" for navy blue.



Headrest Colors



Grey



Sand



Navy Blue

*Actual colors may vary

Shown with Deep Water Kit & Connecting Table



LIFTS



GAMES



RAILS & LADDERS



SLIDES



DIVING BOARDS



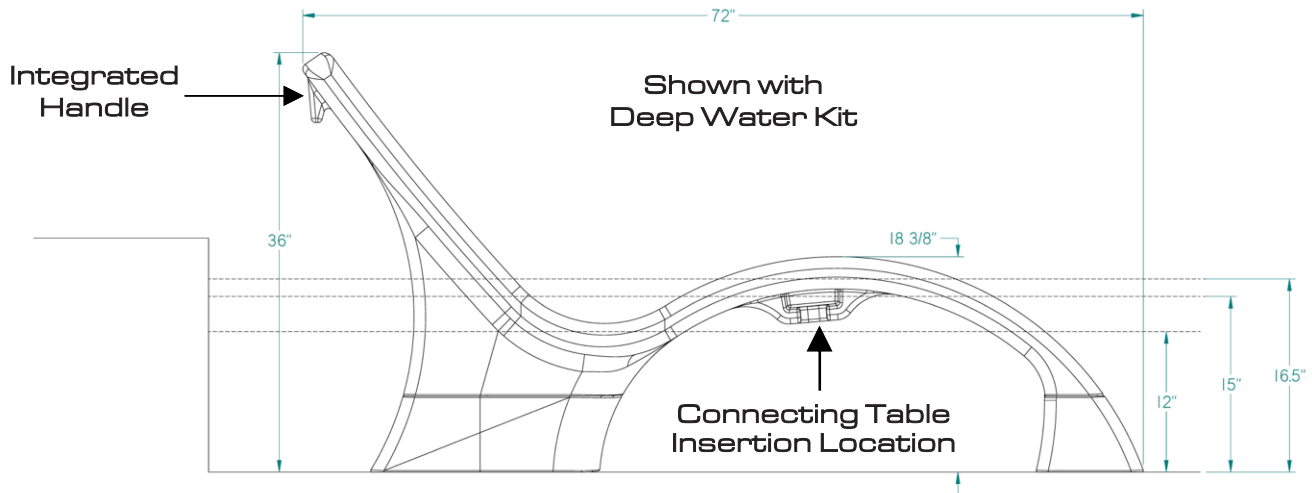
TABLES & SEATING



LOUNGERS

GLOBAL LOUNGER™

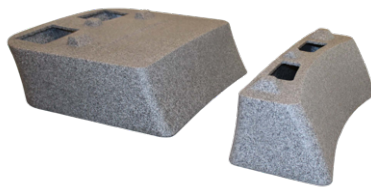
-ACCESSORIES-



LOUNGER DEEP WATER KIT

- Easily installs into the bottom of the Global Lounger
- Designed for water depths of 10 - 16.5 inches

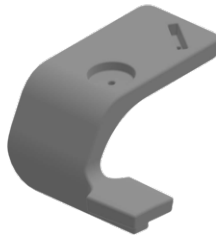
* Patent Pending



LOUNGER CONNECTING TABLE

- Removable lounger table
- Easily slides and secures into the side of the lounger
- Integrated drink and phone holder
- Table Surface: 7.5" x 11.5"

* Patent Pending



LOUNGER HEADREST

- Made with durable Sunbrella material to withstand chemicals, outdoor elements, and stains
- Secures into the back of the lounger



LIFTS



GAME



RAILS & LADDERS



SLIDES



DIVING BOARDS



TABLES & SEATING



LOUNGERS