

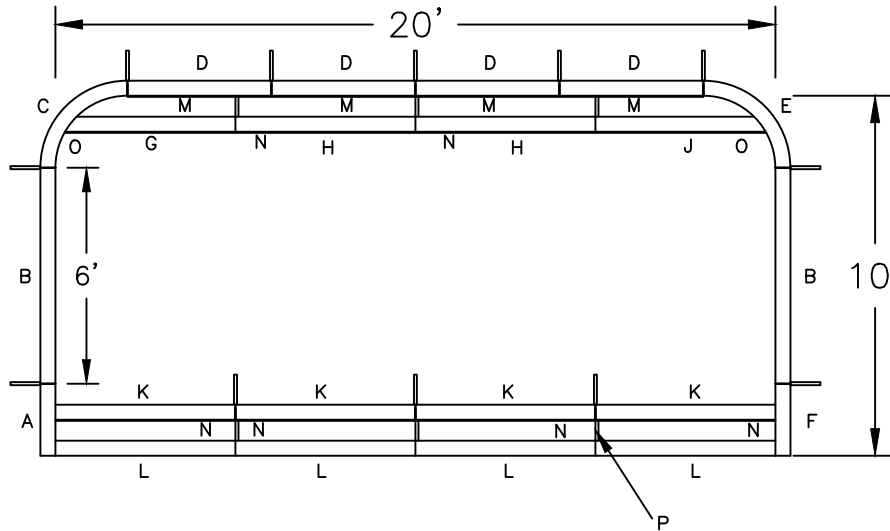


ROYAL
SWIMMING POOLS

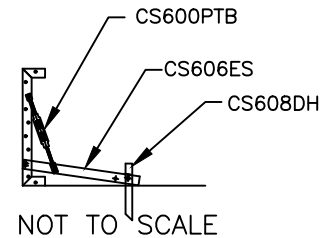
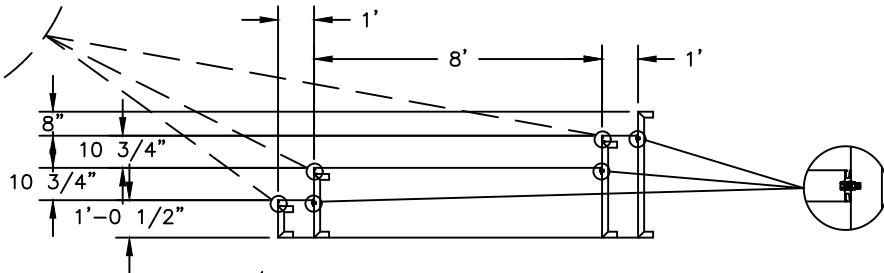
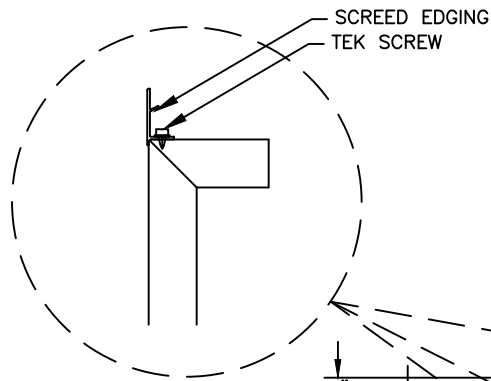
Name: 20' X 42" X 2R FULL WIDTH STEP W/8' SUNLEDGE

Number: SSL-42220-8

6426 Summer Gale Dr. Memphis, TN 38134 | 866-532-8194 | fax: 888-977-2846 | Support@RoyalSwimmingPools.com



POSITION	PART NO.	QTY.	DESCRIPTION
A	SP2678	1	2'-0" STEP PANEL
B	5S42600XXXO	2	6'-0" PANEL
C	SP0908	1	3'-1 5/8" x 2'-0" RADIUS STEP PANEL
D	SP0108	4	4'-0" STEP PANEL
E	SP0911	1	3'-1 5/8" x 2'-0" RADIUS STEP PANEL
F	SP2679	1	2'-0" STEP PANEL
G	PT2471	1	4'-8 3/4" POURED TREAD
H	PT2256	2	5'-0" POURED TREAD
J	PT2472	1	4'-8 3/4" POURED TREAD
K	PT2257	4	5'-0" POURED TREAD
L	PT1887	4	5'-0" POURED TREAD
M	LT0005	4	4'-0" LINER TRACK
N	LT0020	6	5'-0" LINER TRACK
O	LT0339	2	4'-8 3/4" LINER TRACK
P	TS0007	6	1'-0" POURED TREAD SUPPORT
	SP0745-6N-3	4	BOX OF 3 - 6' LONG NOTCHED SCREED EDGE
	BP106ST	1	LARGE STEP BOLT PACK
	BP000TS	1	BOX OF TEK SCREWS
	CS600PTB	9	A-FRAME TURNBUCKLE ASSEMBLY
	CS608DS	12	18" DRIVE STAKE
	CS600PTB	3	TURNBUCKLE
	CS606ES	3	SHORT ANGLE



NOTE:
STEP/DECK SIDE VIEW
USE REBAR HOLE LOCATIONS TO PIN WALL AND STEP DECK SUPPORTS IN PLACE. THEN POUR 4"-6" OF CONCRETE AROUND THESE AREAS AND UNDER THE ASSEMBLY FOR REINFORCEMENT

Drawn By: GR

Date: 4/4/2022

Scale: 3/16" = 1'-0"

Notes: - - - -